

# Standard Wall Exhaust Fans

## SD SERIES

Efficient, low maintenance and easy to install.



8" & 10" MODELS



30" to 48" MODELS WITH ALUMINUM LOUVERS

Canarm's standard fans follow a tradition of quality in design, materials and construction. All our standard fans are developed to be efficient and economically priced. Fans are available in single, two and variable speed models. All variable speed standard fans use an energy efficient variable speed, dual voltage motor and blade combination. To determine the proper Canarm fan for your applications, use the formula and table shown on back of page.

### FEATURES

#### 8" & 10" MODELS

- Smooth, quiet, reliable, maintenance-free operation
- Durable steel construction with grey powder coat finish
- 2 speed fan with high efficiency Euro design external rotor motor
- Totally enclosed with sealed ball bearings
- Pull chain speed control
- 9 foot cord with 115 volt, 3-prong plug
- Swept back, high efficiency, low noise blade design
- Quiet, aluminum shutters with tie bar to maximize airflow and a magnet to prevent flapping and provide a superior seal
- Zinc plated OSHA guard
- Fans shipped completely assembled
- Easy to install! Mount fan using four screws, plug it in and turn it on

#### 12" TO 48" MODELS

- Single, two and variable speed models are available.
- All fans use a totally enclosed, thermally protected motor.
- Rugged steel welded box housing has a durable powder coated finish.
- Aluminum louver shutters are supported by long life nylon bushings (30", 36", 42" & 48" have aluminum louvers).
- 12" - 24" models have heavy wire chrome plated OSHA guards on intake side of fan.
- 30", 36", 42" & 48" models have grey powder coated guards.
- All fans are shipped completely assembled.

### ACCESSORIES

- Grey plastic weather hood
- Galvanized metal hood
- MC type & wet locations controls.

Fans up to 24" can be shipped via UPS.

8" - 24" sizes: Now upgraded with tie bar shutters and magnets for quieter operation and superior seal.

### AIR CHANGES PER MINUTE

Application	Minutes per Air Change	Application	Minutes per Air Change
Assembly Hall	7	Church	15
Attic	2	Classroom	6
Auditorium	10	Dance Hall	5
Barber Shop	6	Department Store	6
Basement	8	Dry Cleaning	5
Battery Room	4	Engine Room	6
Boiler Room	1	Factory	6
Bowling Alley	5	Forge Room	3
Foundry	4	Pressing Room	1
Garage	5	Projection Booth	2
General Office	10	Summer Cooling	1
Gymnasium	8	Toilet	3
Laundry	2	Transformer Room	1
Locker Room	3	Warehouse	12
Machine Shop	8	Welding Shop	2
Plating Room	3		

To determine the proper fan for your applications, use the following formula.

Number of cubic feet in room / Number of minutes per air change = Required CFM Capacity

EXAMPLE: A general office, (see chart) which requires an air change every ten minutes, would require the following fan capacity.

If the office is 100' x 40' x 10' = 40,000 cubic ft  
40,000 cubic ft / 10 minutes per air change = 4000 Required CFM

From the chart, you would select a fan that is rated at 4000 CFM at 1/8" S.P. (Static Pressure)



## SD SERIES Standard Wall Exhaust Fans

### PERFORMANCE SPECIFICATIONS

MODEL	SPEED	BLADE DIAMETER	RPM	HP	VOLTAGE	AMPS (FLA)	WEIGHT (LBS)	dB(A) @5 ft	CFM @ STATIC PRESSURE				FRAMING DIMENSIONS
									0.00"	0.10"	0.125"	0.25"	
SD08	Two	8"	1600/1300	25W	115	0.2	13	48	360/292	270/150	230/110	--	11" X 11"
SD10	Two	10"	1480/1150	60W	115	0.5	15	55	500/388	420/300	400/250	--	13" X 13"
S12-E1	Single	12"	1625	1/4	115	2.7	28	63	1640	1540	1510	1390	15" X 15"
S12-E2	Two	12"	1725/1140	1/4	115	3.4	32	64	1650/1090	1550/950	1520/930	1390/0	15" X 15"
S12-EVD	Variable	12"	1625	1/3	115/230	3.8/1.9	32	60	1650	1540	1510	1390	15" X 15"
S14-E1	Single	14"	1625	1/4	115	2.7	30	67	2170	2070	2030	1860	17" X 17"
S14-E2	Two	14"	1725/1140	1/4	115	3.4	34	65	2180/1350	2080/1190	2060/1160	1890/0	17" X 17"
S16-E1	Single	16"	1625	1/4	115	2.7	33	68	2370	2270	2210	2060	19" X 19"
S16-E2	Two	16"	1725/1140	1/4	115	3.4	36	69	2380/1640	2280/1490	2230/1430	2070/0	19" X 19"
S16-EVD	Variable	16"	1625	1/3	115/230	3.8/1.9	36	63	2370	2270	2210	2063	19" X 19"
S18-F1	Single	18"	1625	1/3	115	4.1	37	73	3200	3090	3040	2920	21" X 21"
S18-F2	Two	18"	1725/1140	1/3	115	5.5/2.9	43	74	3200/2100	3090/1890	3040/1820	2920/0	21" X 21"
S18-FVD	Variable	18"	1625	1/3	115/230	3.8/1.9	45	74	3150	3050	2980	2860	21" X 21"
S20-F1	Single	20"	1625	1/3	115	4.1	41	77	3420	3220	3170	2920	23" X 23"
S20-F2	Two	20"	1725/1140	1/3	115	5.5/2.9	45	77	3440/2300	3240/2000	3180/1950	2930/0	23" X 23"
SD24-F1	Single	24"	1100	1/3	115	3.6	46	70	5000	4500	4300	3600	27" X 27"
SD24-GVD	Variable	24"	1075	1/3	115/230	4.4/2.2	56	72	5050	4910	4810	4400	27" X 27"
SD30-G1D	Single	30"	1075	1/3	115/230	4.4/2.2	72	82	8000	7000	6000	5000	33" X 33"
SD36-G1D	Single	36"	850	1/2	115/230	6.6/3.3	88	72	10000	8500	8000	6200	39" X 39"

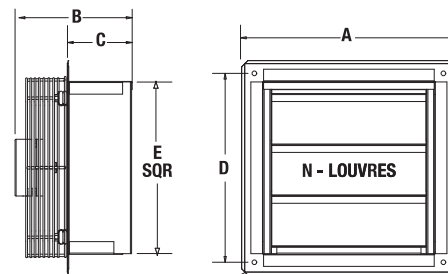
MODEL	SPEED	BLADE DIA.	RPM	HP	VOLT	AMPS (FLA)	WEIGHT (LBS)	dB(A) @5 ft	CFM @ STATIC PRESSURE												FRAMING DIMENSIONS				
									0.00"				0.10"				0.125"					0.25"			
									CFM	BHP	FEI	FEFact (KW)	CFM	BHP	FEI	FEFact (KW)	CFM	BHP	FEI	FEFact (KW)		CFM	BHP	FEI	FEFact (KW)
SD42-H1D	Single	42"	850	1	230	5	122	83	12860	0.85	1.35	0.95	11580	0.87	1.47	0.97	11090	0.87	1.45	1	9029	0.92	1.42	1.03	45" X 45"
SD48-H1D	Single	48"	850	1	230	5	140	84	14470	0.82	1.56	0.92	12610	0.84	1.67	0.94	12200	0.84	1.69	0.94	8400	0.83	1.48	0.93	51" X 51"

RPM Minimum is determined when louvers are opened one inch.  
 Some models are available with explosion proof motors. Please see SD-XPF.  
 Note: Wind has a significant effect on exhaust fans. A 10 mph wind creates a 0.05" pressure against the fan. A 20 mph wind creates 0.20" pressure and 30 mph a 0.45" pressure. These pressures are in addition to the static pressure in the building. Wind blocks or hoods should be included in all designs where fans will be subjected to winds above 10 mph.

### DIMENSIONS

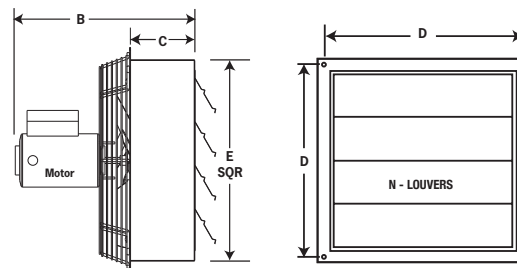
#### 8" & 10" MODELS

FAN SIZE	A	B	C	D (c/c)	E SQR	N
8"	13 1/4"	7 9/16"	4"	12"	10 3/4"	2
10"	15 1/4"	7 7/8"	4"	14"	12 3/4"	3

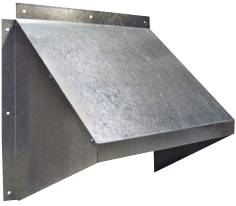


#### 12" TO 48" MODELS

FAN SIZE	A X A SQUARE	B	C	D (c/c)	E	N
12"	17 1/4"	17"	6"	16"	14 3/4"	3
14"	19 1/4"	17"	6"	18"	16 3/4"	3
16"	21 1/4"	17"	6"	20"	18 3/4"	4
18"	23 1/4"	18"	6"	22"	20 3/4"	4
20"	25 1/4"	18"	6 3/4"	24"	22 3/4"	5
24"	29 1/4"	18"	6 3/4"	28"	26 3/4"	5
30"	35 1/4"	18"	6"	34"	32 3/4"	16
36"	41 1/4"	18"	6"	40"	38 3/4"	20
42"	47 1/4"	18"	6 3/4"	46"	44 3/4"	24
48"	53 1/4"	19"	6 3/4"	52"	50 5/8"	26

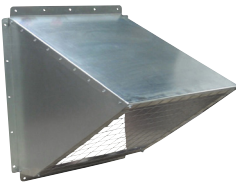


# Options & Accessories Wall Exhaust Fan Hoods



## GH GALVANIZED HOODS

- Economical shipping.
- Easy to assemble, galvanized hood.
- No screens.



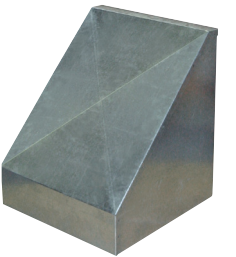
## GH KNOCK DOWN HOODS

- Easy to assemble, galvanized hood.
- Includes bird screen.



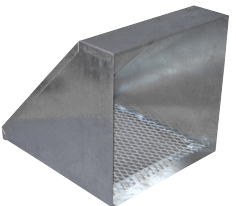
## WHA HOODS

- For AX fans.
- Shipped fully assembled.
- 18 gauge galvanized weather hoods complete with bird screen.
- Optional insect screen available. Consult factory.



## WHP HOODS

- For Panel fans.
- 18 gauge galvanized weather hoods complete with bird screen.
- Optional insect screen available. Consult factory.



## INTAKE & EXHAUST HOODS

- Shipped fully assembled.
- 18 gauge galvanized weather hoods complete with bird screen.



## PLASTIC HOODS

- Rugged, grey plastic hood.
- No screens.

HOOD MODEL	DIMENSIONS		APPROX. WEIGHT (LBS)	FANS THAT WILL FIT
	INSIDE DIMENSIONS	OUTSIDE DIMENSIONS		
<b>GH GALVANIZED HOODS</b>				
GH-XF12-M	14.75"W X 14.0"H	18"W X 15.75"H	4	XF12 / XB12 / SD8 / SD10 / AX8 / AX10 / AX12
GH-XF16-M	18.75"W X 17.75"H	22"W X 19.75"H	7	XF16 / XB12 / HV12 / HVA12 / ADD12 / DDP12 / DDS12 / SD12-14 / AX14-16
GH-XF20-M	22.75"W X 22"H	26"W X 23.75"H	9	XF20 / XB14 / XB16 / HV14-16 / HVA14-16 / ADD14-16 / DDP14-16 / DDS14-16 / SD16-18 / AX18-20
GH-XF24-M	26.75"W X 26"H	29"W X 27.25"H	12	XFS24
<b>GH KNOCKDOWN HOODS</b>				
GH-KD24	31.65"W X 31.66"H	34.65"W X 34.69"H	31	XB24 / HV24 / HVA24 / ADD24 / DDP24 / DDS24 / SD24 / AX24
GH-KD36	43.62"W X 43.93"H	46.62"W X 46.82"H	75	XB30-36 / HV30-36 / HVA30-36 / ADD30-36 / DDS30-36 / SD30-36 / AX30-36 / AX42
GH-KD48	55.62"W X 55.25"H	58.62"W X 58.82"H	TBA	XB42-48 / HV42-48 / HVA42-48 / ADD42-48 / DDS42-48 / SD42 / AX42
GH-KD60	69.76"W X 69.92"H	72.76"W X 72.95"H	TBA	XB54-60 / HV54-60 / HVA54-60 / ADD54-60
<b>WHA HOODS</b>				
WHA8-10	12.11"W X 12.11"H	-	13	AX08-10, SD8
WHA12	14.05"W X 14.05"H	-	16	AX12, SD10
WHA14	16.11"W X 16.11"H	-	22	AX14, SD12
WHA16	18.11"W X 18.11"H	-	26	AX16, SD14
WHA18	20.11"W X 20.11"H	-	29	AX18, SD16
WHA20	22.05"W X 22.05"H	-	31	AX20, SD18
WHA24	26.05"W X 26.05"H	-	47	AX24
WHA30	33.05"W X 33.05"H	-	59	AX30
WHA36	39.11"W X 39.11"H	-	76	AX36
<b>WHP HOODS</b>				
WH8-10P	14.45"W X 14.45"H	-	20	P08 / P10
WH12P	17.40"W X 17.40"H	-	16	P12
WH14P	19.20"W X 19.20"H	-	24	P14
WH16P	21.20"W X 21.20"H	-	26	P16
WH18P	23.20"W X 23.20"H	-	29	P18
WH20P	25.20"W X 25.20"H	-	44	P20
WH24P	29.15"W X 29.15"H	-	44	P24
WH30P	35.65"W X 35.65"H	-	60	P30
WH36P	41.65"W X 41.65"H	-	77	P36
<b>EXHAUST / INTAKE / WEATHER HOODS</b>				
EH12	16.55"W X 16.55"H	-	9	XF12 / SD8-12 / AX8-14 / XB12 / HV12 / HVA12 / ADD12 / DDP12 / DDS12
EH14	18.60"W X 18.60"H	-	15	XB14 / HV14 / HVA14 / ADD14 / DDP14 / DDS14 / SD14 / XF16 / AX16
EH16	20.60"W X 20.60"H	-	20	AX18 / SD16 / XB16 / HV16 / HVA16 / ADD16 / DDP16 / DDS16
EH18	22.55"W X 22.55"H	-	31	SD18 / XB18 / HV18 / HVA18 / ADD18 / DDP18 / DDS18 / XF20 / AX20
EH20	24.55"W X 24.55"H	-	44	SD20 / XB20 / XF24 / HV20 / HVA20 / ADD20 / DDP20 / DDS20
EH24	30.05"W X 30.05"H	-	60	SD24 / AX24 / XB24 / ADD24 / HV24 / HVA24 / DDP24 / DDS24
EH30	36.35"W X 36.35"H	-	72	SD30 / AX30 / XB30 / HV30 / HVA30 / ADD30 / DDS30 / JFHVA24
EH36	42.30"W X 42.30"H	-	104	SD36 / AX36 / XB36 / HV36 / HVA36 / ADD36 / DDS36 / JFHVA30
EH42	48.63"W X 48.63"H	-	163	XB42 / HV42 / HVA42 / ADD42 / DDS42 / JFHVA36 / SD42 / AX42
EH48	54.64"W X 54.64"H	-	TBA	XB48 / HV48 / HVA48 / ADD48 / DDS48 / JFHVA42
EH54	61.20"W X 61.20"H	-	TBA	XB54 / HV54 / HVA54 / ADD54 / JFHVA48
EH60	69.39"W X 69.39"H	-	TBA	XB60 / HV60 / HVA60 / ADD60
<b>PLASTIC HOODS</b>				
HFP-18G	21.50"W X 21.75"H	-	9	S8 / S10 / S12 / S14 / S16 / S18V / AX08 / AX10 / AX12 / AX14 / AX16 / AX18
HFP-24G	27.50"W X 27.75"H	-	13	S20 / S24 AX20 / AX24

# Options & Accessories Speed Controls



MC10

## MC - MANUAL VARIABLE SPEED CONTROLS

Great for use on AX, SD, DFRC and AXC fans!

### FEATURES

- Minimum speed adjustment screw.
- Designed to fit a standard 3" x 5" electrical box.
- Mount in a dry location.
- Now available in 230V/1/60HZ.
- Ideal for use on variable speed SD Standard Exhaust fans, AX, DFRC and AXC fans (not for use with single speed motors).



MC3/5 MC15

MODEL	POWER SUPPLY	AMPERAGE RATING
MC-3	120V/1/60HZ	2.5
MC-5	120V/1/60HZ	5.0
MC-10	120V/1/60HZ	10.0
MC-15	120V/1/60HZ	12.0
MC5-230	230V/1/60HZ	5.0