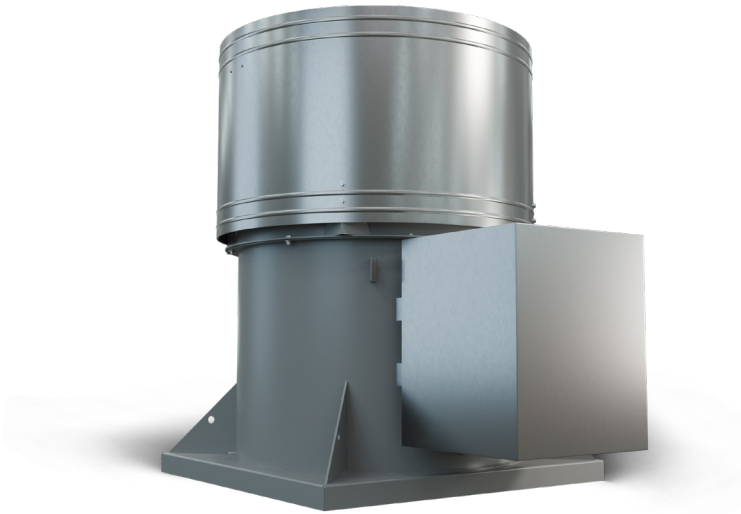


# Belt Drive Roof Exhausters

## RTA SERIES

Belt drive, heavy duty construction ideal for industrial & commercial applications.



### FEATURES

- TEFC, ball bearing motor is out of air stream and is accessible from the roof, maximum ambient temperature of 40° C (104° F).
  - Galvanized steel wind-band and rain-proof butterfly dampers.
  - Cast iron pillow block bearings (out of air stream), complete with external grease fittings.
  - Cast aluminum blades on 12" to 48" sizes.
  - Polypropylene blades reinforced with fiberglass on 54" to 60" sizes.
  - Heavy duty pulleys and belts out of air stream.
- Roof Exhausters are non-stock items and are non-cancelable and non-refundable without prior authorization.*

### DISCONNECT SWITCHES

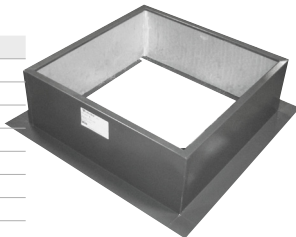
- Wire disconnect switches are available. See Controls & Thermostats section for details.

### ACCESSORIES

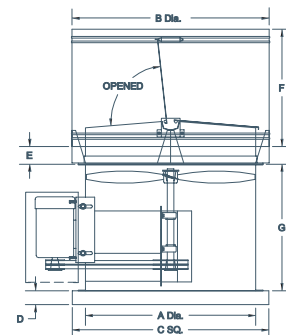
#### RC ROOF CURB

- For Canarm Roof Exhaust fans.
- Sturdy powder coated, 16 gauge steel.
- 3" flanges
- 1" SM insulation
- Damper shelf

FAN SIZE	MODEL
18"	RC18
24"	RC24
30"	RC30
36"	RC36
42"	RC42
48"	RC48
54"	RC54
60"	RC60



### DIMENSIONS



MODEL	A Dia.	B Dia.	C Sq.	D	E	F	G
RTA18	18 3/8"	24 5/8"	24"	2 1/2"	2	17	18
RTA24	24 3/8"	30 5/8"	30"	2 1/2"	2	19	21
RTA30	30 3/8"	36 5/8"	36"	2 1/2"	2	23	21
RTA36	36 3/8"	42 5/8"	42"	2 1/2"	2	25	27
RTA42	42 3/8"	48 5/8"	48"	2 1/2"	2	27	27
RTA48	48 1/2"	54 5/8"	54"	2 1/2"	2	30	31
RTA54	54 1/2"	60 5/8"	60"	2 1/2"	2	36	40
RTA60	60 1/2"	66 5/8"	68"	2 1/2"	2	36	40

# Belt Drive Roof Exhausters

## PERFORMANCE SPECIFICATIONS

RTA model suitable for use in clean, dry air with a maximum ambient temperature of 93° C (200° F).

RWTA models are suitable for use in moisture laden air with a maximum ambient temperature of 93° C (200° F). They feature a Teflon shaft seal, poly housing bearings and stainless steel insert.

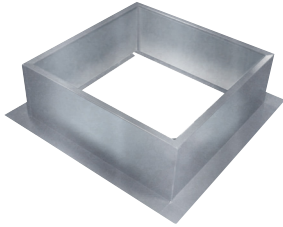
BLADE DIAMETER	CFM @ STATIC PRESSURE																																
	MODEL #	RPM	HP	MIN CFM	0"				1/8"				1/4"				1/2"				3/4"				1"								
					CFM	BHP	FEI	FEPAct (kW)	CFM	BHP	FEI	FEPAct (kW)	CFM	BHP	FEI	FEPAct (kW)	CFM	BHP	FEI	FEPAct (kW)	CFM	BHP	FEI	FEPAct (kW)	CFM	BHP	FEI	FEPAct (kW)					
18"	RTA18T10075A	1556	3/4	2600	59	2794	0.45	-	-	-	-	-	-	-	-	-	-	-	-	-	-	-	-	-	-	-	-	-	-	-	-		
	RTA18T10075B	1785	3/4	2600	62	3203	0.68	-	-	2976	0.72	-	-	-	-	-	-	-	-	-	-	-	-	-	-	-	-	-	-	-	-		
	RTA18T10100	1920	1	2600	64	3449	0.85	0.51	0.84	3244	0.89	0.59	0.88	2815	0.85	0.65	0.84	-	-	-	-	-	-	-	-	-	-	-	-	-	-	-	
	RTA18T10150	2255	1 1/2	2600	68	4043	1.38	0.37	1.31	3901	1.43	0.44	1.36	3653	1.45	0.50	1.37	2863	1.30	0.60	1.24	-	-	-	-	-	-	-	-	-	-	-	
	RTA18T10200	2510	2	2600	72	4508	1.90	0.30	1.76	4368	1.95	0.37	1.80	4175	1.99	0.42	1.84	3483	1.84	0.51	1.71	2897	1.92	0.53	1.92	-	-	-	-	-	-	-	
	RTA24T10075	1180	3/4	4700	58	5095	0.51	-	-	-	-	-	-	-	-	-	-	-	-	-	-	-	-	-	-	-	-	-	-	-	-	-	
	RTA24T10100	1295	1	4700	61	5582	0.68	0.91	0.69	5094	0.71	1.03	0.72	-	-	-	-	-	-	-	-	-	-	-	-	-	-	-	-	-	-	-	
	RTA24T10150	1475	1 1/2	4700	65	6371	1.00	0.72	0.98	5969	1.04	0.84	1.02	5418	1.05	0.93	1.03	-	-	-	-	-	-	-	-	-	-	-	-	-	-	-	-
	RTA24T10200	1620	2	4700	67	6976	1.32	0.61	1.26	6638	1.37	0.72	1.30	6164	1.39	0.81	1.32	4848	1.35	0.90	1.29	-	-	-	-	-	-	-	-	-	-	-	-
	RTA24T10300	1890	3	4700	72	8178	2.19	0.44	2.01	7910	2.17	0.55	1.99	7486	2.19	0.63	2.01	6579	2.20	0.75	2.02	5165	2.11	0.79	1.94	-	-	-	-	-	-	-	-
	RTA30T10100	965	1	7300	59	8874	0.88	1.08	0.87	7942	0.94	1.18	0.93	-	-	-	-	-	-	-	-	-	-	-	-	-	-	-	-	-	-	-	-
	RTA30T10150	1095	1 1/2	7300	62	10068	1.29	0.85	1.23	9266	1.36	0.97	1.30	8240	1.36	1.06	1.30	-	-	-	-	-	-	-	-	-	-	-	-	-	-	-	-
	RTA30T10200	1225	2	7300	65	11270	1.80	0.70	1.68	10618	1.87	0.82	1.74	9723	1.91	0.90	1.77	-	-	-	-	-	-	-	-	-	-	-	-	-	-	-	-
	RTA30T10300	1380	3	7300	67	12727	2.58	0.56	2.34	12106	2.66	0.66	2.41	11388	2.72	0.75	2.46	9483	2.67	0.87	2.42	-	-	-	-	-	-	-	-	-	-	-	-
	RTA30T10500	1635	5	7300	72	15033	4.31	0.40	3.80	14626	4.43	0.49	3.90	13989	4.48	0.56	3.94	12654	4.54	0.69	3.99	10756	4.40	0.77	3.87	7922	4.21	0.73	3.71	-	-	-	-
	RTA36T10200	910	2	10000	63	14346	1.67	0.93	1.56	13047	1.72	1.06	1.61	11483	1.72	1.15	1.61	-	-	-	-	-	-	-	-	-	-	-	-	-	-	-	-
	RTA36T10300	1045	3	10000	66	16498	2.53	0.71	2.30	15381	2.59	0.84	2.35	14076	2.62	0.94	2.37	10528	2.44	1.04	2.22	-	-	-	-	-	-	-	-	-	-	-	-
	RTA36T10500	1245	5	10000	71	19661	4.28	0.51	3.77	18751	4.36	0.62	3.84	17655	4.40	0.71	3.87	15341	4.40	0.85	3.87	10821	3.97	0.85	3.51	-	-	-	-	-	-	-	-
RTA42T10750	1425	7 1/2	10000	75	22467	6.42	0.39	5.56	21719	6.51	0.48	5.63	20850	6.58	0.56	5.69	18910	6.61	0.70	5.72	16624	6.49	0.79	5.62	11635	5.92	0.62	5.14	-	-	-	-	
RTA42T10200	770	2	14000	61	18272	1.60	1.20	1.50	16358	1.68	1.33	1.57	14045	1.69	1.41	1.58	-	-	-	-	-	-	-	-	-	-	-	-	-	-	-	-	
RTA42T10300	895	3	14000	65	21244	2.50	0.91	2.27	19639	2.61	1.05	2.37	17776	2.64	1.16	2.39	11631	2.41	1.15	2.20	-	-	-	-	-	-	-	-	-	-	-	-	
RTA42T10500	1005	5	14000	67	23874	3.55	0.73	3.16	22458	3.67	0.86	3.26	20848	3.75	0.96	3.33	17008	3.69	1.10	3.28	-	-	-	-	-	-	-	-	-	-	-	-	
RTA42T10750	1205	7 1/2	14000	72	28574	6.14	0.51	5.33	27469	6.28	0.62	5.44	26215	6.39	0.72	5.53	23360	6.47	0.87	5.60	19760	6.32	0.96	5.48	-	-	-	-	-	-	-	-	
RTA42T11000	1335	10	14000	75	31680	8.34	0.42	7.15	30684	8.50	0.52	7.28	29494	8.60	0.60	7.37	27123	8.81	0.74	7.54	24259	8.76	0.85	7.50	20471	8.37	0.91	7.18	-	-	-	-	
RTA48T10300	670	3	18000	63	24932	2.77	0.96	2.50	22900	2.11	1.47	1.94	19736	2.87	1.18	2.59	-	-	-	-	-	-	-	-	-	-	-	-	-	-	-	-	
RTA48T10500	790	5	18000	67	29538	4.54	0.70	3.99	27800	4.66	0.84	4.09	25504	4.72	0.94	4.14	21029	4.68	1.07	4.11	-	-	-	-	-	-	-	-	-	-	-	-	
RTA48T10750	900	7 1/2	18000	71	33386	6.70	0.54	5.79	32200	6.85	0.67	5.92	30303	6.93	0.76	5.98	25877	6.96	0.89	6.01	-	-	-	-	-	-	-	-	-	-	-	-	
RTA48T11000	990	10	18000	73	36822	8.88	0.45	7.60	35700	9.08	0.50	7.75	34056	9.15	0.65	7.82	29829	9.33	0.77	7.97	26410	9.21	0.88	7.87	-	-	-	-	-	-	-	-	
RTA54T10500	710	5	23000	68	37130	4.26	-	-	34615	4.46	-	-	31680	4.67	-	-	-	-	-	-	-	-	-	-	-	-	-	-	-	-	-		
RTA54T10750	810	7 1/2	23000	71	42890	6.20	-	-	41128	6.50	-	-	38660	6.85	-	-	33210	6.99	-	-	25390	6.87	-	-	-	-	-	-	-	-	-		
RTA54T11000	905	10	23000	74	48450	8.54	-	-	46911	8.94	-	-	44640	9.41	-	-	40140	9.73	-	-	34980	9.78	-	-	27220	9.53	-	-	-	-	-		
RTA60T10750	690	7 1/2	29000	68	51240	6.45	-	-	49020	6.85	-	-	45760	7.18	-	-	35770	7.09	-	-	-	-	-	-	-	-	-	-	-	-	-		
RTA60T11000	755	10	29000	70	56770	8.48	-	-	54440	8.88	-	-	51490	9.21	-	-	40470	9.43	-	-	-	-	-	-	-	-	-	-	-	-	-		

BLADE DIAMETER	CFM @ STATIC PRESSURE																																
	MODEL #	RPM	HP	MIN CFM	0"				1/8"				1/4"				1/2"				3/4"				1"								
					CFM	BHP	FEI	FEPAct (kW)	CFM	BHP	FEI	FEPAct (kW)	CFM	BHP	FEI	FEPAct (kW)	CFM	BHP	FEI	FEPAct (kW)	CFM	BHP	FEI	FEPAct (kW)	CFM	BHP	FEI	FEPAct (kW)					
18"	RTA18T30075A*	1556	3/4	2600	59	2794	0.45	-	-	-	-	-	-	-	-	-	-	-	-	-	-	-	-	-	-	-	-	-	-	-	-		
	RTA18T30075B*	1785	3/4	2600	62	3203	0.68	-	-	2976	0.72	-	-	-	-	-	-	-	-	-	-	-	-	-	-	-	-	-	-	-	-	-	
	RTA18T30100*	1920	1	2600	64	3449	0.85	0.52	0.82	3244	0.89	0.60	0.86	2815	0.85	0.67	0.82	-	-	-	-	-	-	-	-	-	-	-	-	-	-	-	-
	RTA18T30150*	2255	1 1/2	2600	68	4043	1.38	0.38	1.30	3901	1.43	0.45	1.35	3653	1.45	0.50	1.36	2863	1.30	0.61	1.23	-	-	-	-	-	-	-	-	-	-	-	-
	RTA18T30200*	2510	2	2600	72	4508	1.90	0.30	1.77	4368	1.95	0.36	1.82	4175	1.99	0.41	1.88	3483	1.84	0.51	1.72	2897	1.92	0.52	1.79	-	-	-	-	-	-	-	-
	RTA24T30075*	1180	3/4	4700	58	5095	0.51	-	-	-	-	-	-	-	-	-	-	-	-	-	-	-	-	-	-	-	-	-	-	-	-	-	
	RTA24T30100*	1295	1	4700	61	5582	0.68	0.95	0.67	5094	0.71	1.07	0.70	-	-	-	-	-	-	-	-	-	-	-	-	-	-	-	-	-	-	-	
	RTA24T30150*	1475	1 1/2	4700	65	6371	1.00	0.74	0.96	5969	1.04	0.86	1.00	5418	1.05	0.95																	

# Options & Accessories Roof Curbs

## NON-VENTED FOR 300, 700, SIS, ALX, SB-SBRM & SD-SDUB SERIES



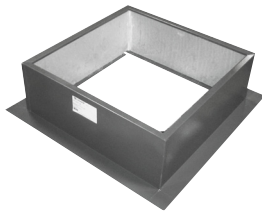
RCG ROOF CURB

- RCG are 18" high, RCGL are 12" high
- 18 gauge galvanized steel construction
- 1 3/4" flanges
- Insulated curbs available (RCGI or RCGLI)
- Shipped fully assembled

Please note Galvanized Curbs (RCG's) are for UL705 only. For UL762 the curb must be vented and be a minimum of 40" from roof to outlet - use RCGV curbs (below)

Part # (Non-Insulated)	Part # (Insulated)	Curb OD Dimension sq	Curb fits Models
RCG17.5 / RCGL17.5	RCGI17.5 / RCGLI17.5	17.5"	ALX105, ALX120, SD-SDUB-10, SD-SDUB-12
RCG18.5 / RCGL18.5	RCGI18.5 / RCGLI18.5	18.5"	307
RCG19.5 / RCGL19.5	RCGI19.5 / RCGLI19.5	19.5"	ALX135, ALX150, SB-SBRM-13, SD-SDUB-30, SD-SDUB-33, SD-SDUB-50, ALX105-C2, ALX120-C2
RCG22.5 / RCGL22.5	RCGI22.5 / RCGLI22.5	22.5"	309,709,SIS-09
RCG23.25 / RCGL23.25	RCGI23.25 / RCGLI23.25	23.25"	ALX165, SB-SBRM-15, SD-SDUB-85, ALX135-C2, ALX150-C2, ALX180-C2
RCG26.5 / RCGL26.5	RCGI26.5 / RCGLI26.5	26.5"	ALX180, SIS-10, SB-SBRM-18, ALX165-C2
RCG30.5 / RCGL30.5	RCGI30.5 / RCGLI30.5	30.5"	312,712,715, SIS-12, SIG-12, SIG-15
RCG31.5 / RCGL31.5	RCGI31.5 / RCGLI31.5	31.5"	ALX210, ALX245, SB-SBRM-24
RCG34.5 / RCGL34.5	RCGI34.5 / RCGLI34.5	34.5"	315,718,SIS-15,SIS-18
RCG38.5 / RCGL38.5	RCGI38.5 / RCGLI38.5	38.5"	318, SB-SBRM-30, ALX210-C2, ALX245-C2, ALX300
RCG42.5 / RCGL42.5	RCGI42.5 / RCGLI42.5	42.5"	SIS-20, ALX360, SB-SBRM36

## NON-VENTED FOR RTA, RB & RD SERIES



- 16 gauge galvanized or painted steel construction
- RC are insulated, painted, with 3" flanges and damper shelf
- RCG are non-insulated, galvanized, with 1 3/4" flanges
- RCGI are insulated, galvanized, with 1 3/4" flanges
- All are 10 1/4" high
- Shipped fully assembled

ROOF CURBS FOR RTA, RB & RD SERIES (Non-vented) 10 1/4" High				
Part # Painted	Part # Galv (Non-Insulated)	Part # Galv (Insulated)	Curb OD Dimension sq	Curb fits Models
RC18	RCG21.625	RCGI21.625	21.6"	RTA18
RC24	RCG29.125	RCGI29.125	29.1"	RTA-RB-RD24
RC30	RCG35.125	RCGI35.125	35.1"	RTA-RB-RD30
RC36	RCG41.125	RCGI41.125	41.1"	RTA-RB-RD36
RC42	RCG47.125	RCGI47.125	47.1"	RTA-RB-RD42-RTASH
RC48	RCG53.125	RCGI53.125	53.1"	RTA-RB-RD48-RTASH
RC54	RCG59.125	RCGI59.125	59.1"	RTA-RB54-RTASH
RC60	RCG67.125	RCGI67.125	67.1"	RTA-RB60

## VENTED FOR ALX, SB-SBRM & SD-SDUB SERIES



RCGV ROOF CURB

- UL762 requires vents and minimum 40" from roof to outlet
- Curb height varies to meet UL762 (see table)
- RCGV are 18" high, RCGVL are 12" high
- RCGVH vary to meet UL762
- 18 gauge galvanized steel construction
- 1 3/4" flanges
- Non-insulated & shipped fully assembled

Part #	Part #	UL762 Curb Height	Curb OD Dimension sq	Curb Fits Models
Vented 18" high (RCGV) Vented 12" high (RCGVL)	To Meet UL762			
RCGV17.5 / RCGVL17.5	RCGVH17.5	27"	17.5"	ALX105, ALX120, SD-SDUB-10, SD-SDUB-12
RCGV19.5 / RCGVL19.5	RCGVH19.5	25"	19.5"	ALX135, ALX150, SB-SBRM-13, SD-SDUB-30, SD-SDUB-33, SD-SDUB-50, HRE-13, ALX105-C2, ALX105-C2
RCGV23.25 / RCGVL23.25	RCGV23.25	18"	23.25"	ALX165, SB-SBRM-15, SD-SDUB-85, HRE-16, ALX135-C2, ALX150-C2, ALX180-C2
RCGV26.5 / RCGVL26.5	RCGV26.5	18"	26.5"	ALX180, SB-SBRM-18, HRE-20, ALX165-C2
RCGV31.5 / RCGVL31.5	RCGV31.5	18"	31.5"	ALX210, ALX245, SB-SBRM-24, HRE-24
RCGV38.5 / RCGVL38.5	RCGV38.5	18"	38.5"	SB-SBRM-30, ALX210-C2, ALX245-C2, ALX300

# Options & Accessories Disconnect Switches



**EL1/3-25A  
MOISTURE RESISTANT SWITCH**

Single or Three Phase  
Moisture resistant, IP65  
25 Amps, 3 Poles

**HP Ratings**  
120V AC - 3hp  
240V AC - 7.5hp  
480V AC - 15hp  
600V AC - 20hp



**DS1/3-30A  
DISCONNECT SWITCH**

Single or Three Phase  
Disconnect NEMA 3R (3030D)  
30 Amps, 3 Poles

**HP Ratings**  
120V AC - 3hp  
240V AC - 7.5hp  
480V AC - 15hp  
600V AC - 20hp



**KG1-2P1PH  
TOGGLE SWITCH**

Single Phase, Non-reversing,  
toggle operation NEMA 1  
(2510KG1)  
30 Amps, 2 Poles

**HP Ratings**  
120V AC - 2hp  
240V AC - 2hp  
480V AC - 2hp



**8890-5426-1  
TOGGLE SWITCH WITH PILOT LIGHT**

15 Amps, 2 Poles

**HP Ratings**  
120V AC - 0.5hp



**8890-54522-W  
TOGGLE SWITCH**

20 Amps, 2 Poles

**HP Ratings**  
120V AC - 1hp  
240V AC - 2hp



**8890-MS403  
TOGGLE SWITCH**

40 Amps, 3 Poles

**HP Ratings**  
120V AC - 7.5hp  
240V AC - 15hp  
480V AC - 20hp  
600V AC - 40hp



**8890-N13NC  
SWITCH ENCLOSURE  
WITH LOCKOUT**

NEMA 1 Steel switch