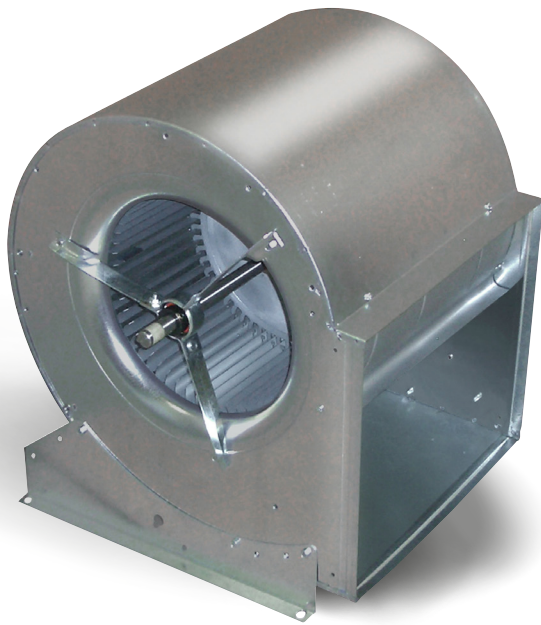


# Double Inlet Belt Drive Blowers

G SERIES



## FEATURES

- Sleeve or ball bearing models available.
- Base feet can be mounted for various discharge positions.
- Motor mounting hardware included with each blower.
- Corrosion resistant G90 galvanized steel blower housing.
- Capacity range 200 to 8000 CFM.
- The blower wheel has an exclusive centre disc which allows blowers to be used safely at speeds well above any normal requirement.
- Blower housings have extruded holes to give greater holding power for mounting base sides and motor bracket.
- Matte finish zinc coated wheel and cut-off baffle.
- Shaft dimensions and finish are carefully controlled to ensure quiet, trouble free operation.
- Available with permanently lubricated sleeve bearings suitable for operation in ambient temperatures of +30 to +120 deg. F and under 1000 RPM OR ball bearings with a sealed lifetime supply of lubricant for operation in ambient temperatures of -65 to +250 deg. F (optional).
- Shafts for ball bearing models have keywayed ends. Sleeve bearing model shafts have flats.



### TWIN UNIT

Use a common shaft for balanced air supply by each blower. Call for pricing & availability.



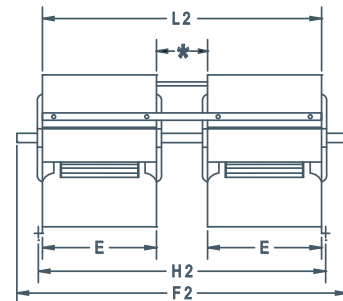
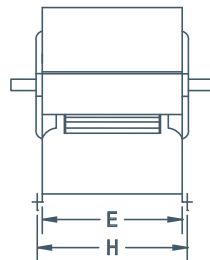
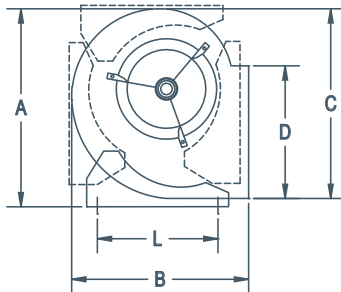
## G SERIES Double Inlet Belt Drive Blowers

### PERFORMANCE SPECIFICATIONS

| MODEL  | 1/2" SP |      |      |                         | 1" SP |      |      |                         | 1 1/2" SP |      |      |                         | 2" SP |      |      |                         | 2 1/2" SP |      |      |                         |
|--------|---------|------|------|-------------------------|-------|------|------|-------------------------|-----------|------|------|-------------------------|-------|------|------|-------------------------|-----------|------|------|-------------------------|
|        | CFM     | BHP  | FEI  | FE <sub>Pact</sub> (kW) | CFM   | BHP  | FEI  | FE <sub>Pact</sub> (kW) | CFM       | BHP  | FEI  | FE <sub>Pact</sub> (kW) | CFM   | BHP  | FEI  | FE <sub>Pact</sub> (kW) | CFM       | BHP  | FEI  | FE <sub>Pact</sub> (kW) |
| G7-5   | 1600    | 1.91 | 0.49 | 1.77                    | 1500  | 1.85 | 0.56 | 1.72                    | 1400      | 1.79 | 0.62 | 1.67                    | 1400  | 2.00 | 0.66 | 1.85                    | 1300      | 1.85 | 0.74 | 1.72                    |
| G7     | 2200    | 1.85 | 0.66 | 1.72                    | 2100  | 1.87 | 0.74 | 1.74                    | 2000      | 1.90 | 0.81 | 1.76                    | 1900  | 1.95 | 0.86 | 1.80                    | 1800      | 1.98 | 0.91 | 1.83                    |
| G9-7   | 2700    | 1.83 | 0.78 | 1.70                    | 2600  | 1.87 | 0.88 | 1.74                    | 2500      | 1.92 | 0.97 | 1.78                    | 2400  | 1.96 | 1.05 | 1.81                    | 2200      | 1.88 | 1.11 | 1.05                    |
| G9     | 3200    | 1.95 | 0.77 | 1.80                    | 3000  | 1.89 | 0.90 | 1.75                    | 2800      | 1.88 | 1.00 | 1.74                    | 2600  | 1.95 | 1.04 | 1.80                    | 2300      | 1.90 | 1.07 | 1.76                    |
| G10-8  | 3200    | 1.88 | 0.81 | 1.74                    | 3100  | 1.97 | 0.93 | 1.82                    | 2900      | 1.95 | 1.02 | 1.80                    | 2700  | 1.95 | 1.10 | 1.80                    | 2400      | 1.90 | 1.13 | 1.76                    |
| G10    | 3700    | 1.90 | 0.85 | 1.76                    | 3500  | 1.94 | 0.97 | 1.80                    | 3300      | 2.00 | 1.07 | 1.85                    | 3000  | 1.98 | 1.13 | 1.83                    | 2700      | 1.96 | 1.18 | 1.81                    |
| G12-9  | 4300    | 1.99 | 0.98 | 1.84                    | 3900  | 1.91 | 1.10 | 1.77                    | 3600      | 1.97 | 1.16 | 1.82                    | 3200  | 1.95 | 1.20 | 1.80                    | 2900      | 1.95 | 1.25 | 1.80                    |
| G12    | 4600    | 1.96 | 0.90 | 1.81                    | 4300  | 2.00 | 1.05 | 1.85                    | 3800      | 1.92 | 1.16 | 1.78                    | 3400  | 1.97 | 1.20 | 1.82                    | 2900      | 1.96 | 1.19 | 1.81                    |
| G15-10 | 4900    | 1.95 | 0.93 | 1.80                    | 4600  | 1.96 | 1.11 | 1.81                    | 4200      | 1.95 | 1.24 | 1.80                    | 3700  | 1.94 | 1.30 | 1.80                    | 3100      | 2.00 | 1.23 | 1.85                    |
| G15    | 6900    | 2.90 | 0.95 | 2.61                    | 6400  | 2.97 | 1.07 | 2.67                    | 5800      | 2.96 | 1.16 | 2.66                    | 5200  | 2.91 | 1.24 | 2.62                    | 4600      | 2.96 | 1.24 | 2.66                    |
| G18-13 | 8800    | 4.88 | 0.82 | 4.27                    | 8300  | 4.95 | 0.92 | 4.33                    | 7900      | 4.87 | 1.06 | 4.27                    | 7400  | 4.91 | 1.13 | 4.30                    | 6800      | 4.93 | 1.17 | 4.32                    |
| G18    | 8700    | 2.95 | 1.06 | 2.65                    | 7700  | 2.98 | 1.17 | 2.68                    | 6900      | 3.00 | 1.27 | 2.70                    | 5800  | 3.00 | 1.26 | 2.70                    | 3600      | 2.95 | 0.94 | 2.65                    |

### DIMENSIONS

| MODEL  | A         | B         | C         | D        | E         | H         | L       | SHAFT DIAMETER | WHEEL DIAMETER | WHEEL WIDTH | UNIT WEIGHT (lbs) without motor & drives |
|--------|-----------|-----------|-----------|----------|-----------|-----------|---------|----------------|----------------|-------------|--|
| G7-5   | 14 5/16"  | 12 5/16"  | 12 11/16" | 8 1/4"   | 6 7/8"    | 7 7/8"    | 9 5/8"  | 3/4"           | 8 1/16"        | 4 15/16"    | 13                                       |
| G7     | 14 5/16"  | 12 5/16"  | 12 11/16" | 8 1/4"   | 9 3/16"   | 10 3/16"  | 9 5/8"  | 3/4"           | 8 1/16"        | 7 3/16"     | 15                                       |
| G9-7   | 16 15/16" | 15 1/16"  | 15 9/16"  | 10 1/4"  | 9 3/16"   | 10 3/16"  | 11 3/4" | 3/4"           | 10 1/4"        | 7 3/16"     | 19                                       |
| G9     | 16 15/16" | 15 1/16"  | 15 9/16"  | 10 1/4"  | 11 13/16" | 12 13/16" | 11 3/4" | 3/4"           | 10 1/4"        | 9 9/16"     | 21                                       |
| G10-8  | 19"       | 16 3/4"   | 17 3/8"   | 11 3/8"  | 10 1/2"   | 11 1/2"   | 13 3/8" | 3/4"           | 11 1/8"        | 8 1/16"     | 23                                       |
| G10    | 19"       | 16 3/4"   | 17 3/8"   | 11 3/8"  | 13 1/8"   | 14 1/8"   | 13 3/8" | 3/4"           | 11 9/16"       | 10 13/16"   | 25                                       |
| G12-9  | 22 1/8"   | 19 1/2"   | 20 5/8"   | 13 7/16" | 12 1/4"   | 13 1/4"   | 16 1/8" | 3/4"           | 12 7/8"        | 9 9/16"     | 29                                       |
| G12    | 22 1/8"   | 19 1/2"   | 20 5/8"   | 13 7/16" | 15 5/8"   | 16 5/8"   | 16 1/8" | 3/4" or 1"     | 12 7/8"        | 12 13/16"   | 34                                       |
| G15-10 | 25 3/4"   | 22 11/16" | 24 1/4"   | 15 7/8"  | 14 11/16" | 15 11/16" | 19 1/2" | 1"             | 15 1/2"        | 10 13/16"   | 48                                       |
| G15    | 25 3/4"   | 22 11/16" | 24 1/4"   | 15 7/8"  | 18 5/8"   | 19 5/8"   | 19 1/2" | 1"             | 15 1/2"        | 15 1/16"    | 56                                       |
| G18-13 | 30 1/2"   | 27"       | 29"       | 18 7/8"  | 17 3/8"   | 18 3/8"   | 24"     | 1"             | 18 1/2"        | 15 1/16"    | 67                                       |
| G18    | 30 1/2"   | 27"       | 29"       | 18 7/8"  | 21 7/8"   | 22 7/8"   | 24"     | 1"             | 18 1/2"        | 18 1/2"     | 87                                       |



G SERIES TWIN UNITS  
\*SPACING WILL DETERMINE "L2" "H2" AND "F2" DIMENSIONS.



SCAN TO  
VIEW FEI  
CHARTS