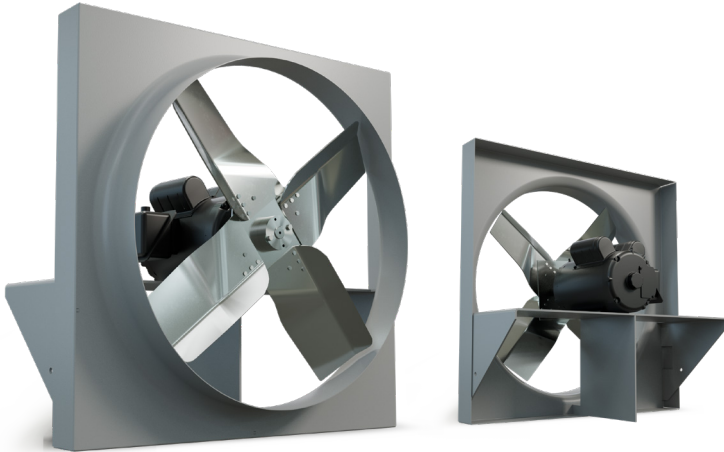


Heavy Duty Direct Drive Wall Exhaust Fans

DDS SERIES

Designed for heavy duty, commercial and industrial exhaust applications.



The DDS fan utilizes a steel fan blade for efficient and economical operations and is direct drive, therefore requiring little to no maintenance.

This fan is used for exhaust applications. Please consult factory for supply applications.

PERFORMANCE SPECIFICATIONS

MODEL #	SINGLE PHASE	THREE PHASE	WEIGHT (LBS.)	RPM	H.P.	dBA @ 5 ft.	CFM @ STATIC PRESSURE								
							0"	1/8"	1/4"	3/8"	1/2"	5/8"	3/4"		
12"	DDS12T1033C	DDS12T3033C*	42	1140	1/3	53	940	647	325	-	-	-	-	-	-
	DDS12T1033B	DDS12T3033B*	34	1750	1/3	65	1422	1285	1062	697	587	419	234	-	-
14"	DDS14T1033C	DDS14T3033C*	45	1140	1/3	58	1346	1082	624	395	111	-	-	-	-
	DDS14T1033B	DDS14T3033B*	38	1750	1/3	67	2037	1879	1705	1417	1032	882	733	-	-
16"	DDS16T1033C	DDS16T3033C*	50	1140	1/3	63	1981	1660	1064	765	463	133	-	-	-
	DDS16T1033B	DDS16T3033B*	42	1750	1/3	72	2992	2841	2607	2223	1808	1521	1314	-	-
18"	DDS18T1033C	DDS18T3033C*	52	1140	1/3	64	2654	2331	1606	1077	745	449	228	-	-
	DDS18T1050B	DDS18T3050B*	44	1750	1/2	74	4016	3816	3594	3304	2934	2173	1814	-	-
20"	DDS20T1033C	DDS20T3033C*	56	1140	1/3	69	3561	3210	2734	1774	1350	986	675	-	-
	DDS20T1100B	DDS20T3100B*	67	1750	1	78	5389	5162	4926	4674	4350	3951	3191	-	-
	DDS24T1075C	DDS24T3075C*	100	1140	3/4	73	6549	6017	5527	4482	3454	2801	2226	-	-
24"	DDS24T1100B	DDS24T3100B*	93	1750	1	81	6761	6453	6128	5792	5291	4802	4316	-	-
	DDS24T1300B	DDS24T3300B*	132	1750	3	84	9909	9558	9207	8886	8599	8131	7576	-	-
30"	-	DDS30T3150C*	139	1140	1 1/2	79	11600	10925	10193	9127	7504	6177	5178	-	-
	DDS30T1500B	DDS30T3500B*	157	1750	5	90	17552	17106	16661	16215	15745	15190	14541	-	-
36"	-	DDS36T3200D*	230	860	2	80	16364	15172	13864	11597	9443	8094	6134	-	-
	-	DDS36T3500C*	233	1140	5	88	21692	20793	19893	18903	17883	15993	13983	-	-
42"	-	DDS42T3500D*	371	860	5	85	24499	23193	21957	20490	18660	15890	12704	-	-
	-	DDS42T3500C*	253	1140	5	88	23209	22619	21962	21019	19925	18829	17519	-	-
48"	-	DDS48T3750D*	520	860	7 1/2	89	35654	33411	31857	30219	28021	25622	22628	-	-
	-	DDS48T3750C*	398	1140	7 1/2	92	32563	31677	30688	29636	28562	27222	25795	-	-



CURRENTLY ONLY AVAILABLE IN CANADA

For three phase motors, substitute "*" with "M" for 230/460 volt (If 208V required please specify) or "P" for 575 volt

Fan blades tested in accordance with AMCA standard 210, figure 12

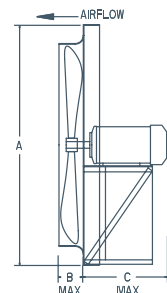
dBA ratings shown are measured at 0" static pressure and should be used as a guideline only

FEATURES

- Heavy gauge steel fan panel with deep spun and flared venturi for maximum efficiency.
- Heavy gauge welded steel motor supports.
- Galvanized, heavy gauge steel blades that are statically and dynamically balanced.
- TEFC motors are standard.

DIMENSIONS

MODEL	BLADE DIAMETER	A X A SQUARE	B	C (DIRECT DRIVE MOTOR FRAME)		
				56 - 184	213 - 215	254 - 286
DDS12	12"	16.125"	2.0"	13"	--	--
DDS14	14"	18.125"	2.5"	13"	--	--
DDS16	16"	20.125"	3.0"	13"	--	--
DDS18	18"	22.125"	3.0"	13"	--	--
DDS20	20"	24.125"	3.5"	13"	--	--
DDS24	24"	29.625"	4.0"	13"	14"	--
DDS30	30"	35.625"	4.5"	13"	14"	25"
DDS36	36"	41.625"	5.0"	13"	14"	25"
DDS42	42"	47.625"	5.0"	13"	14"	25"
DDS48	48"	53.625"	5.0"	--	14"	25"



OPTIONS



For fan complete with cabinet/guard and shutter, substitute "T" with CBS



For fan complete with front sleeve and shutter, substitute "T" with SLS



For fan with rear sleeve and back guard, substitute "T" with SLB

Options & Accessories for Standard Wall Exhaust Fans

CABINET, BACK GUARD & SHUTTER (CBS)



FRONT GUARDS

Front guards available, consult factory.

Wire mesh not available on all sizes.



FRONT SLEEVE & SHUTTER (SLS)

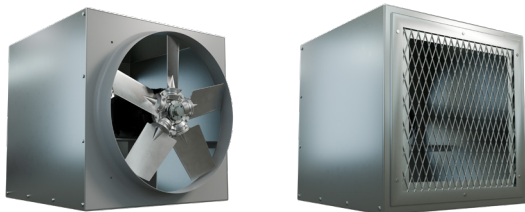


STEEL CONTROL & MOTORIZED CONTROL DAMPERS

Motorized steel control dampers can be mounted in fan cabinet or sleeve in either exhaust or intake applications. Consult factory.



REAR SLEEVE & BACK GUARD (SLB)



SPECIAL COATING

For most applications, Canarm's standard enamel paint will provide the necessary surface protection for painted parts. For special requirements, coatings such as hot dipped galvanizing and epoxy, please consult factory.

DISCONNECT SWITCHES

Wire disconnect switches are available.

MOTOR OPTIONS

TWO SPEED MOTOR

Two speed motors are available for some of Canarm's exhaust fans. 1800/1200 or 1800/900 RPM variable torque, single and three phase. Consult factory for available voltages and configurations.

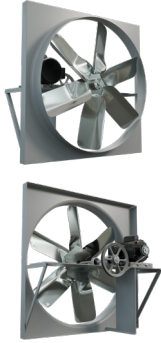
Explosion Proof MOTORS (direct drive only)

Some of Canarm exhaust fans can be equipped with Explosion Proof Motors for hazardous locations. Class I, Groups C & D - Class II, Groups F & G. Consult factory for models.

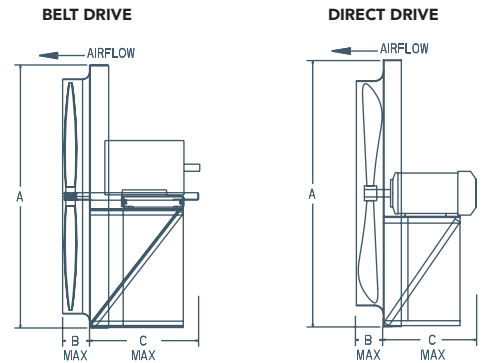
Class I, Group C	Atmospheres containing ethyl ether, ethylene, gases or vapors of equivalent hazard.
Class I, Group D	Atmospheres such as acetone, ammonia, benzene, butane, cyclopropane, ethanol, gasoline, hexane, methane, natural gas, naphtha, propane, or gasses or vapors of equivalent hazard.
Class II Group F	Atmospheres containing carbonaceous dust, including carbon black, charcoal, coal, or coke dusts that have more than 8% total entrapped volatiles, or dusts that have been sensitized by other materials so that they present an explosion hazard.
Class II Group G	Atmospheres containing combustible dusts not included in group E or F, including flour, grain, wood, plastic and chemicals.

Options & Accessories for Standard Wall Exhaust Fans

VENTURI



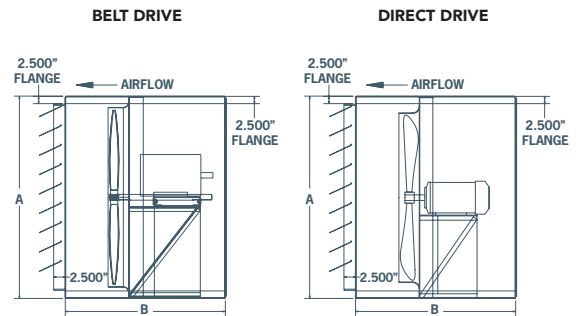
BLADE DIAMETER	A X A SQUARE	B	C					
			BELT DRIVE MOTOR FRAME		DIRECT DRIVE MOTOR FRAME			
			56 - 184	213 - 286	56 - 184	213 - 215	254 - 286	
12"	16.125"	2.0"	--	--	13"	--	--	
14"	18.125"	2.5"	--	--	13"	--	--	
16"	20.125"	3.0"	--	--	13"	--	--	
18"	22.125"	3.0"	--	--	13"	--	--	
20"	24.125"	3.5"	--	--	13"	--	--	
24"	29.625"	4.0"	18"	--	13"	14"	--	
30"	35.625"	4.5"	18"	--	13"	14"	25"	
36"	41.625"	5.0"	18"	28"	13"	14"	25"	
42"	47.625"	5.0"	18"	28"	13"	14"	25"	
48"	53.625"	5.0"	18"	28"	--	14"	25"	
54"	59.657"	5.5"	18"	28"	--	--	--	
60"	67.657"	6.0"	18"	28"	--	--	--	



CABINET, BACK GUARD & SHUTTER (CBS)



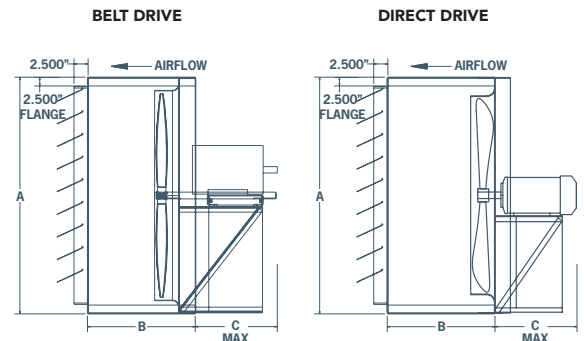
BLADE DIAMETER	A X A SQUARE	B	C					
			BELT DRIVE MOTOR FRAME		DIRECT DRIVE MOTOR FRAME			
			56 - 184	213 - 286	56 - 184	213 - 215	254 - 286	
12"	16.375"	--	--	--	26"	--	--	
14"	18.375"	--	--	--	26"	--	--	
16"	20.375"	--	--	--	26"	--	--	
18"	22.375"	--	--	--	26"	--	--	
20"	24.375"	--	--	--	26"	--	--	
24"	29.875"	33"	--	33"	33"	--	--	
30"	35.875"	33"	--	33"	33"	43"	--	
36"	41.875"	33"	43"	33"	33"	33"	43"	
42"	47.875"	33"	43"	33"	33"	33"	43"	
48"	53.875"	33"	43"	--	33"	33"	43"	
54"	59.9375"	33"	43"	--	--	--	--	
60"	67.9375"	33"	43"	--	--	--	--	



FRONT SLEEVE & SHUTTER (SLS)



BLADE DIAMETER	A X A SQUARE	B	C					
			BELT DRIVE MOTOR FRAME		DIRECT DRIVE MOTOR FRAME			
			56 - 184	213 - 286	56 - 184	213 - 215	254 - 286	
12"	16.375"	15.0"	--	--	12"	--	--	
14"	18.375"	15.0"	--	--	12"	--	--	
16"	20.375"	15.0"	--	--	12"	--	--	
18"	22.375"	15.0"	--	--	12"	--	--	
20"	24.375"	15.0"	--	--	12"	--	--	
24"	29.875"	19.0"	15"	--	10"	11"	--	
30"	35.875"	19.0"	15"	--	10"	11"	22"	
36"	41.875"	19.0"	15"	25"	10"	11"	22"	
42"	47.875"	19.0"	15"	25"	10"	11"	22"	
48"	53.875"	19.0"	15"	25"	--	11"	22"	
54"	59.9375"	19.0"	15"	25"	--	--	--	
60"	67.9375"	19.0"	15"	25"	--	--	--	



REAR SLEEVE & BACK GUARD (SLB)



BLADE DIAMETER	A X A SQUARE	B	C					
			BELT DRIVE MOTOR FRAME		DIRECT DRIVE MOTOR FRAME			
			56 - 184	213 - 286	56 - 184	213 - 215	254 - 286	
12"	16.375"	2.0"	--	--	15"	--	--	
14"	18.375"	2.5"	--	--	15"	--	--	
16"	20.375"	3.0"	--	--	15"	--	--	
18"	22.375"	3.0"	--	--	15"	--	--	
20"	24.375"	3.5"	--	--	15"	--	--	
24"	29.875"	4.0"	19"	--	19"	19"	--	
30"	35.875"	4.5"	19"	--	19"	19"	29"	
36"	41.875"	5.0"	19"	29"	19"	19"	29"	
42"	47.875"	5.0"	19"	29"	19"	19"	29"	
48"	53.875"	5.0"	19"	29"	--	19"	29"	
54"	59.9375"	5.5"	19"	29"	--	--	--	
60"	67.9375"	6.0"	19"	29"	--	--	--	

