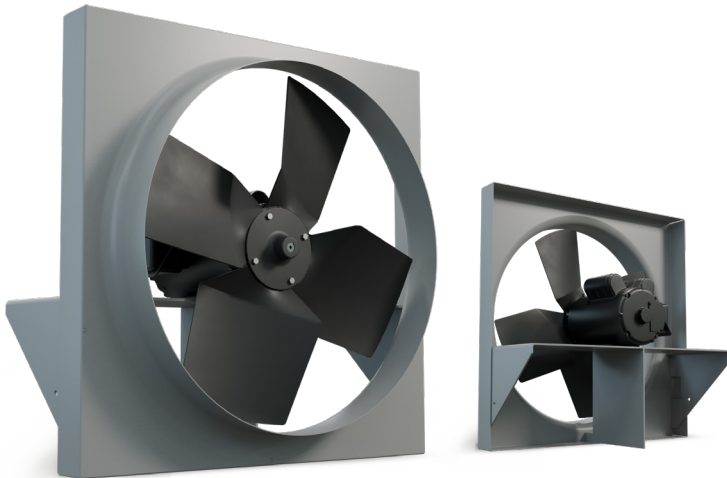


# Heavy Duty Direct Drive Wall Exhaust Fans

## DDP SERIES

Designed for heavy duty, commercial and industrial exhaust applications.



The DDP fan utilizes a fiberglass reinforced polypropylene blade that runs more efficiently and quieter than steel fan blades.

Available in 12" - 24" blade sizes and 1/4 - 2 HP motor sizes.

This fan is used for exhaust applications. Please consult factory for supply applications.



**CURRENTLY ONLY  
AVAILABLE IN CANADA**

### FEATURES

- Heavy gauge steel fan panel with deep spun and flared venturi for maximum efficiency.
- Heavy gauge welded steel motor supports.
- Fiberglass reinforced polypropylene blades.
- TEFC motors are standard.

### OPTIONS



For fan complete with cabinet/guard and shutter, substitute "T" with CBS



For fan complete with front sleeve and shutter, substitute "T" with SLS



For fan with rear sleeve and back guard, substitute "T" with SLB

### PERFORMANCE SPECIFICATIONS

MODEL #	SINGLE PHASE	THREE PHASE	WEIGHT (lbs)	RPM	H.P.	dBA @ 5 ft.	CFM @ STATIC PRESSURE								
							0"	1/8"	1/4"	3/8"	1/2"	5/8"	3/4"		
12"	DDP1230T1033C	DDP1230T3033C*	41	1140	1/3	50	929	755	472	-	-	-	-	-	-
	DDP1235T1033C	DDP1235T3033C*	41	1140	1/3	51	1080	859	475	-	-	-	-	-	-
	DDP1240T1033C	DDP1240T3033C*	41	1140	1/3	51	1240	997	559	-	-	-	-	-	-
	DDP1230T1033B	DDP1230T3033B*	33	1750	1/3	30	1410	1300	1180	1050	890	-	-	-	-
	DDP1235T1033B	DDP1235T3033B*	33	1750	1/3	61	1630	1500	1350	1200	985	-	-	-	-
14"	DDP1430T1033C	DDP1430T3033C*	45	1140	1/3	51	1460	1250	1010	560	-	-	-	-	-
	DDP1435T1033C	DDP1435T3033C*	45	1140	1/3	52	1680	1430	1120	636	-	-	-	-	-
	DDP1430T1033B	DDP1430T3033B*	37	1750	1/3	61	2210	2080	1950	1800	1640	1425	-	-	-
	DDP1435T1033B	DDP1435T3033B*	37	1750	1/3	62	2540	2380	2210	2020	1820	1575	-	-	-
	DDP1630T1033C	DDP1630T3033C*	49	1140	1/3	54	2070	1845	1610	940	-	-	-	-	-
16"	DDP1635T1033C	DDP1635T3033C*	49	1140	1/3	55	2300	2065	1780	1060	-	-	-	-	-
	DDP1640T1033C	DDP1640T3033C*	49	1140	1/3	57	1730	2440	2070	1230	-	-	-	-	-
	DDP1630T1050B	DDP1630T3050B*	41	1750	1/2	64	3130	2980	2830	2680	2530	2350	2130	-	-
	DDP1635T1050B	DDP1635T3050B*	41	1750	1/2	64	3480	3330	3170	3000	2820	2610	2400	-	-
	DDP1640T1075B	DDP1640T3075B*	41	1750	3/4	66	4130	3940	3730	3550	3290	3000	2680	-	-
18"	DDP1830T1033C	DDP1830T3033C*	50	1140	1/3	55	2790	2530	2270	1870	-	-	-	-	-
	DDP1835T1033C	DDP1835T3033C*	50	1140	1/3	58	3190	2910	2600	2205	1330	-	-	-	-
	DDP1840T1050C	DDP1840T3050C*	62	1140	1/2	61	3850	3480	3040	2485	1580	-	-	-	-
	DDP1830T1075B	DDP1830T3075B*	42	1750	3/4	67	4220	4050	3880	3710	3530	3340	3110	-	-
	DDP1835T1100B	DDP1835T3100B*	62	1750	1	68	4830	4650	4460	4260	4060	3850	3570	-	-
20"	-	DDP1840T3150B*	72	1750	1 1/2	70	5830	5600	5340	5100	4780	4480	4150	-	-
	DDP2030T1033C	DDP2030T3033C*	53	1140	1/3	63	3710	3405	3100	2720	2040	-	-	-	-
	DDP2035T1050C	DDP2035T3050C*	65	1140	1/2	63	4240	3960	3610	3215	2650	-	-	-	-
	DDP2030T1100B	DDP2030T3100B*	65	1750	1	72	5610	5420	5220	5000	4800	4610	4370	-	-
	DDP2035T1150B	DDP2035T3150B*	75	1750	1 1/2	73	6410	6220	6010	5800	5600	5360	5110	-	-
24"	DDP2404T1150B	DDP2404T3150B*	75	1750	1 1/2	73	7770	7530	7300	7000	6660	6350	5980	-	-
	DDP2425T1050C	DDP2425T3050C*	86	1140	1/2	63	4790	4260	3700	2865	1980	1345	-	-	-
	DDP2430T1050C	DDP2430T3050C*	86	1140	1/2	63	5710	5160	4520	3780	2730	2010	-	-	-
	DDP2435T1075C	DDP2435T3075C*	88	1140	3/4	64	6420	5815	5180	4425	3370	2445	1810	-	-
	DDP2425T1100B	DDP2425T3100B*	86	1750	1	73	7240	6900	6550	6210	5850	5370	4840	-	-
DDP2430T1150B	DDP2430T3150B*	76	1750	1 1/2	73	8580	8300	7920	7510	7100	6640	6150	-	-	
DDP2435T1200B	DDP2435T3200B*	108	1750	2	75	9660	9280	8880	8530	8110	7620	7150	-	-	

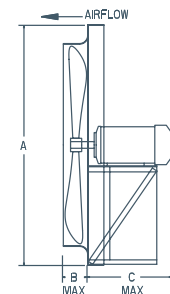
For three phase motors, substitute "\*" with "M" for 230/460 volt (If 208V required please specify) or "P" for 575 volt.

Fan blades tested in accordance with AMCA standard 210, figure 12.

dBA ratings shown are measured at 0" static pressure and should be used as a guideline only.

### DIMENSIONS

MODEL	BLADE DIAMETER	A X A SQUARE	B	C (DIRECT DRIVE MOTOR FRAME)	
DDP12	12"	16.125"	2.0"	56 - 184	213 - 215
DDP14	14"	18.125"	2.5"	13"	--
DDP16	16"	20.125"	3.0"	13"	--
DDP18	18"	22.125"	3.0"	13"	--
DDP20	20"	24.125"	3.5"	13"	--
DDP24	24"	29.625"	4.0"	13"	14"



# Options & Accessories for Standard Wall Exhaust Fans

## CABINET, BACK GUARD & SHUTTER (CBS)



## FRONT GUARDS

Front guards available, consult factory.

Wire mesh not available on all sizes.



## FRONT SLEEVE & SHUTTER (SLS)

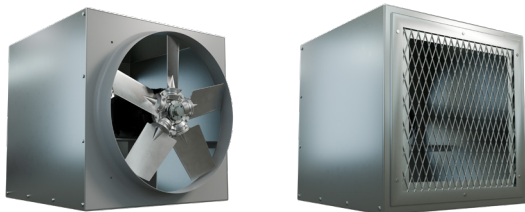


## STEEL CONTROL & MOTORIZED CONTROL DAMPERS

Motorized steel control dampers can be mounted in fan cabinet or sleeve in either exhaust or intake applications. Consult factory.



## REAR SLEEVE & BACK GUARD (SLB)



## SPECIAL COATING

For most applications, Canarm's standard enamel paint will provide the necessary surface protection for painted parts. For special requirements, coatings such as hot dipped galvanizing and epoxy, please consult factory.

## DISCONNECT SWITCHES

Wire disconnect switches are available.

## MOTOR OPTIONS

### TWO SPEED MOTOR

Two speed motors are available for some of Canarm's exhaust fans. 1800/1200 or 1800/900 RPM variable torque, single and three phase. Consult factory for available voltages and configurations.



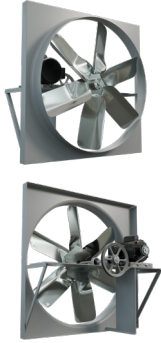
### Explosion Proof MOTORS (direct drive only)

Some of Canarm exhaust fans can be equipped with Explosion Proof Motors for hazardous locations. Class I, Groups C & D - Class II, Groups F & G. Consult factory for models.

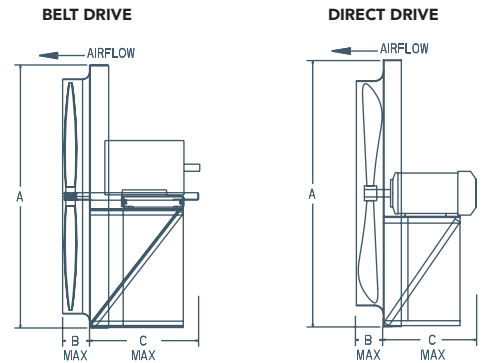
Class I, Group C	Atmospheres containing ethyl ether, ethylene, gases or vapors of equivalent hazard.
Class I, Group D	Atmospheres such as acetone, ammonia, benzene, butane, cyclopropane, ethanol, gasoline, hexane, methane, natural gas, naphtha, propane, or gasses or vapors of equivalent hazard.
Class II Group F	Atmospheres containing carbonaceous dust, including carbon black, charcoal, coal, or coke dusts that have more than 8% total entrapped volatiles, or dusts that have been sensitized by other materials so that they present an explosion hazard.
Class II Group G	Atmospheres containing combustible dusts not included in group E or F, including flour, grain, wood, plastic and chemicals.

# Options & Accessories for Standard Wall Exhaust Fans

## VENTURI



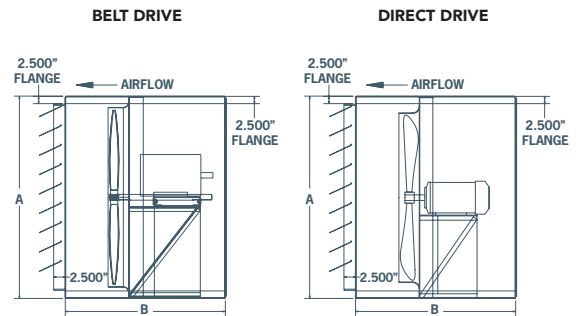
BLADE DIAMETER	A X A SQUARE	B	C					
			BELT DRIVE MOTOR FRAME		DIRECT DRIVE MOTOR FRAME			
			56 - 184	213 - 286	56 - 184	213 - 215	254 - 286	
12"	16.125"	2.0"	--	--	13"	--	--	
14"	18.125"	2.5"	--	--	13"	--	--	
16"	20.125"	3.0"	--	--	13"	--	--	
18"	22.125"	3.0"	--	--	13"	--	--	
20"	24.125"	3.5"	--	--	13"	--	--	
24"	29.625"	4.0"	18"	--	13"	14"	--	
30"	35.625"	4.5"	18"	--	13"	14"	25"	
36"	41.625"	5.0"	18"	28"	13"	14"	25"	
42"	47.625"	5.0"	18"	28"	13"	14"	25"	
48"	53.625"	5.0"	18"	28"	--	14"	25"	
54"	59.657"	5.5"	18"	28"	--	--	--	
60"	67.657"	6.0"	18"	28"	--	--	--	



## CABINET, BACK GUARD & SHUTTER (CBS)



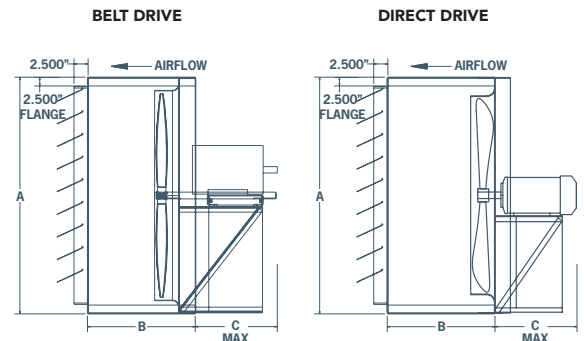
BLADE DIAMETER	A X A SQUARE	B	C					
			BELT DRIVE MOTOR FRAME		DIRECT DRIVE MOTOR FRAME			
			56 - 184	213 - 286	56 - 184	213 - 215	254 - 286	
12"	16.375"	--	--	--	26"	--	--	
14"	18.375"	--	--	--	26"	--	--	
16"	20.375"	--	--	--	26"	--	--	
18"	22.375"	--	--	--	26"	--	--	
20"	24.375"	--	--	--	26"	--	--	
24"	29.875"	33"	--	33"	33"	--	--	
30"	35.875"	33"	--	33"	33"	43"	--	
36"	41.875"	33"	43"	33"	33"	33"	43"	
42"	47.875"	33"	43"	33"	33"	33"	43"	
48"	53.875"	33"	43"	--	33"	33"	43"	
54"	59.9375"	33"	43"	--	--	--	--	
60"	67.9375"	33"	43"	--	--	--	--	



## FRONT SLEEVE & SHUTTER (SLS)



BLADE DIAMETER	A X A SQUARE	B	C					
			BELT DRIVE MOTOR FRAME		DIRECT DRIVE MOTOR FRAME			
			56 - 184	213 - 286	56 - 184	213 - 215	254 - 286	
12"	16.375"	15.0"	--	--	12"	--	--	
14"	18.375"	15.0"	--	--	12"	--	--	
16"	20.375"	15.0"	--	--	12"	--	--	
18"	22.375"	15.0"	--	--	12"	--	--	
20"	24.375"	15.0"	--	--	12"	--	--	
24"	29.875"	19.0"	15"	--	10"	11"	--	
30"	35.875"	19.0"	15"	--	10"	11"	22"	
36"	41.875"	19.0"	15"	25"	10"	11"	22"	
42"	47.875"	19.0"	15"	25"	10"	11"	22"	
48"	53.875"	19.0"	15"	25"	--	11"	22"	
54"	59.9375"	19.0"	15"	25"	--	--	--	
60"	67.9375"	19.0"	15"	25"	--	--	--	



## REAR SLEEVE & BACK GUARD (SLB)



BLADE DIAMETER	A X A SQUARE	B	C					
			BELT DRIVE MOTOR FRAME		DIRECT DRIVE MOTOR FRAME			
			56 - 184	213 - 286	56 - 184	213 - 215	254 - 286	
12"	16.375"	2.0"	--	--	15"	--	--	
14"	18.375"	2.5"	--	--	15"	--	--	
16"	20.375"	3.0"	--	--	15"	--	--	
18"	22.375"	3.0"	--	--	15"	--	--	
20"	24.375"	3.5"	--	--	15"	--	--	
24"	29.875"	4.0"	19"	--	19"	19"	--	
30"	35.875"	4.5"	19"	--	19"	19"	29"	
36"	41.875"	5.0"	19"	29"	19"	19"	29"	
42"	47.875"	5.0"	19"	29"	19"	19"	29"	
48"	53.875"	5.0"	19"	29"	--	19"	29"	
54"	59.9375"	5.5"	19"	29"	--	--	--	
60"	67.9375"	6.0"	19"	29"	--	--	--	

