

Extruded Aluminum Shutter Fans

AX SERIES

Designed for industrial, commercial and farming applications.



FEATURES

- Sturdily constructed from all-aluminum extrusions.
- 8" - 24" models have heavy wire chrome plated OSHA guards on intake side of fan.
- 30", 36" & 42" models have grey powder coated guards.
- Totally enclosed air over motor with overload protection.
- Ships fully assembled.
- Fans up to 24" can ship via UPS
- 8 & 10" models feature a cord & plug and pull chain control.

ACCESSORIES

- Speed controls
- Thermostats
- Front guard
- Weather hoods

8" & 10" MODEL



 **Explosion Proof
MOTOR**

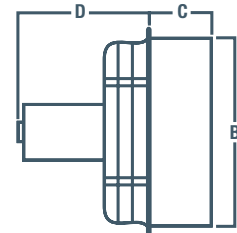
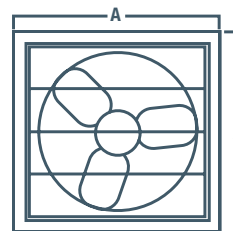
The AX series exhaust fan is a sturdily constructed, direct drive, horizontal discharge fan that is typically used for general ventilation of factories, garages, warehouses and other industrial or commercial buildings. The AX fans are available in multiple single-speed variations as well as two-speed and variable speed models. The AX series housings are constructed of heavy duty aluminum with built in shutters that automatically open when the fan starts and gravity closes when the fan stops.

Some models now available with optional DC volt motor. Call for details.

DIMENSIONS

MODEL	A	B	C	D	
				AX	AX-4~
AX08	14 3/4"	11 3/4"	5"	3 7/8"	-
AX10	14 3/4"	11 3/4"	5"	3 7/8"	-
AX12	16 3/4"	13 3/4"	5"	11"	13 3/4"
AX14	18 3/4"	15 3/4"	5"	11"	13 3/4"
AX16	20 3/4"	17 3/4"	5"	11"	13 3/4"
AX18	22 3/4"	19 3/4"	5"	12"	14"
AX20	24 3/4"	21 3/4"	5"	12"	14"
AX24	28 3/4"	25 3/4"	5"	12"	13 3/4"
AX30	35 1/4"	32 3/4"	5"	13"	-
AX36	41 1/4"	38 3/4"	5"	12"	-
AX42	47 3/4"	44 3/4"	5"	11"	-

~ Explosion Proof Motor, 50 Hz or 3 phase



AX SERIES Extruded Aluminum Shutter Fans

PERFORMANCE SPECIFICATIONS

SINGLE PHASE	THREE PHASE ***	BLADE DIAMETER	RPM	HP (SINGLE PHASE)	VOLTAGE (SINGLE PHASE)	AMPS (FLA) (SINGLE PHASE)	WEIGHT (LBS)	dB(A) @5 ft	CFM @ STATIC PRESSURE				FRAMING DIMENSIONS
									0.00"	0.10"	0.125"	0.25"	
SINGLE SPEED - VARIABLE SPEED FANS													
AX12-1V	AX12-1*	12"	1700	1/3	115/230	3.8/1.9	26	63	1650	1560	1525	1400	14" X 14"
AX12-1VHE	-	12"	1450	1/15	115	1.0	22	60	1350	1290	1275	1150	14" X 14"
AX14-1V	AX14-1*	14"	1700	1/3	115/230	3.8/1.9	29	67	2170	2030	1950	1900	16" X 16"
AX14-1VHE	-	14"	1450	1/15	115	1.0	25	64	1600	1525	1500	1300	16" X 16"
AX16-1V	AX16-1*	16"	1700	1/3	115/230	3.8/1.9	30	68	2570	2470	2410	2260	18" X 18"
AX16-1VHE	-	16"	1450	1/15	115	1.0	26	63	1850	1750	1700	1550	18" X 18"
AX18-1V	AX18-1*	18"	1700	1/3	115/230	3.8/1.9	36	71	3150	3000	2900	2575	20" X 20"
AX20-1V	AX20-1*	20"	1700	1/3	115/230	3.8/1.9	39	77	3620	3420	3340	3120	22" X 22"
AX24-1V	--	24"	1100	1/3	115/230	4.4/2.2	43	72	5500	5400	5310	5100	26" X 26"
--	AX24-1*	24"	1100	1/3	--	--	43	77	5500	5400	5310	5100	26" X 26"
SINGLE SPEED FANS													
AX12-2	--	12"	1625	1/4	115	2.7	27	63	1640	1540	1510	1390	14" X 14"
AX14-2	--	14"	1625	1/4	115	2.7	30	67	2170	2070	2030	1860	16" X 16"
AX16-2	--	16"	1625	1/4	115	2.7	31	68	2370	2270	2210	2060	18" X 18"
AX18-2	--	18"	1625	1/3	115	4.1	37	73	3200	3090	3040	2920	20" X 20"
AX20-2	--	20"	1625	1/3	115	4.1	39	77	3420	3220	3170	2920	22" X 22"
AX24-2	--	24"	1100	1/3	115	5.4	45	70	5000	4500	4300	3600	26" X 26"
AX30-2	--	30"	1100	1/3	115/230	4.4/2.2	72	82	8000	7000	6000	5000	33" X 33"
AX36-7	AX36-7M**	36"	850	1/2	115/230	6.6/3.3	88	72	10000	8500	8000	6200	39" X 39"
TWO SPEED FANS *NOTE: 8 & 10" models feature a cord & plug and pull chain control.													
*AX08	--	8"	1600/1300	25W	115	0.2	13	48	360/292	270/150	230/110	-	12" X 12"
*AX10	--	10"	1480/1150	60W	115	0.5	15	55	500/388	420/300	400/250	-	12" X 12"
AX12-3	--	12"	1725/1140	1/4	115	3.4	27	64	1670/1100	1600/950	1575/900	1450/625	14" X 14"
AX14-3	--	14"	1725/1140	1/4	115	3.4	31	67	2190/1440	2080/1325	2000/1300	1950/850	16" X 16"
AX16-3	--	16"	1725/1140	1/4	115	3.4	34	69	2580/1770	2480/1620	2430/1560	2270/1020	18" X 18"
AX18-3	--	18"	1725/1140	1/3	115	5.5/2.9	38	74	3200/2310	3050/2030	2950/1960	2625/1750	20" X 20"
AX20-3	--	20"	1725/1140	1/3	115	5.5/2.9	41	77	3640/2420	3440/2270	3360/2210	3140/1890	22" X 22"
SINGLE SPEED EXPLOSION PROOF FANS (Explosion Proof Motors are DIVISION 1 - CLASS 1 - GROUP C & D and CLASS 2 - GROUP F & G)													
Class I, Group C - Atmospheres containing ethyl ether, ethylene, gases or vapors of equivalent hazard.													
Class I, Group D - Atmospheres such as acetone, ammonia, benzene, butane, cyclopropane, ethanol, gasoline, hexane, methane, natural gas, naphtha, propane, or gases or vapors of equivalent hazard.													
Class II Group F - Atmospheres containing carbonaceous dust, including carbon black, charcoal, coal, or coke dusts that have more than 8% total entrapped volatiles, or dusts that have been sensitized by other materials so that they present an explosion hazard.													
Class II Group G - Atmospheres containing combustible dusts not included in group E or F, including flour, grain, wood, plastic and chemicals.													
AX12-4	AX12-4*	12"	1725	1/3	115/230	6.6/3.3	49	63	1670	1600	1575	1450	14" X 14"
AX14-4	AX14-4*	14"	1725	1/3	115/230	6.6/3.3	49	67	2190	2080	2000	1950	16" X 16"
AX16-4	AX16-4*	16"	1725	1/3	115/230	6.6/3.3	51	68	2580	2480	2430	2270	18" X 18"
AX18-4	AX18-4*	18"	1725	1/3	115/230	6.6/3.3	56	73	3200	3050	2950	2625	20" X 20"
AX20-4	AX20-4*	20"	1725	1/3	115/230	6.6/3.3	57	77	3640	3440	3360	3140	22" X 22"
AX24-4	AX24-4*	24"	1725	1/3	115/230	6.6/3.3	57	77	5520	5410	5330	5130	26" X 26"



MODEL	HP	VOLT	RPM	dB(A) @5 ft	CFM @ STATIC PRESSURE												FRAMING					
					0.00"			0.10"			0.125"			0.25"								
					CFM	BHP	FEI	CFM	BHP	FEI	CFM	BHP	FEI	CFM	BHP	FEI						
AX42-7	42"	850	1	230	5	122	84	13100	0.89	1.3	1	0.92	1.42	1.03	0.92	1.43	1.04	8800	0.97	1.32	1.09	45" x 45"

**NOTE: AX36-7M is only available in 208-230/460 volt for three phase applications. Other voltages in single or three phase are available. 50HZ voltages are available. Consult factory.

***These models are not cETLus certified.

For three phase motors, substitute "***" with "M" for 230/460 volt or "P" for 575 volt.



Options & Accessories

Speed Controls

T, MC, FC



TS15 TWO-SPEED CONTROL

FEATURES

- Manual control for 2 speed fans.
- High/low/off SPDT switch.
- For dry locations.
- 15 Amp rating at 115V; 10 Amp rating at 230V



MC10

MC - MANUAL VARIABLE SPEED CONTROLS

Great for use on AX, SD, DFRC and AXC fans!

FEATURES

- Minimum speed adjustment screw.
- Designed to fit a standard 3" x 5" electrical box.
- Mount in a dry location.
- Now available in 230V/1/60HZ.
- Ideal for use on variable speed SD Standard Exhaust fans, AX, DFRC and AXC fans (not for use with single speed motors).



MC3/5 MC15

MODEL	POWER SUPPLY	AMPERAGE RATING
MC-3	120V/1/60HZ	2.5
MC-5	120V/1/60HZ	5.0
MC-10	120V/1/60HZ	10.0
MC-15	120V/1/60HZ	12.0
MC5-230	230V/1/60HZ	5.0



FC-1VAC

FC - VARIABLE SPEED CONTROLS

FEATURES

- **MANUAL (FC-1VAC)** One variable speed output (12.5 A at 120/230 VAC general purpose resistive, 9 FLA at 120/230 VAC PSC motor)
- Adjustable high/low settings.
- ON/OFF switch.
- May also be used as a light dimmer to power up to five, 250 Watt brooder lamps.
- 115 or 230V AC operation.
- Overload protection fuse (15 Amp 250V AC).
- Rugged enclosure (corrosion and water resistant and fire retardant).



FC-1T-1VAC

- **AUTOMATIC (FC-1T-1VAC)** The control will automatically vary the speed of the fan to hold the set temperature.
- One variable stage (10 A general-purpose (resistive) load at 120/230VAC, 7 FLA at 120/230VAC, PSC motor)
- Two control knobs, one for set temperature, one for adjusting the minimum speed.
- Continues to run at minimum speed or change the internal shunt to have the fan turn off at minimum speed setting.
- 2°F off set-back for auto shut off.
- 6°F temperature differential.
- One foot temperature probe.
- 115 or 230V AC operation.
- Adjustable 40 - 90°F temperature set point.
- Overload protection fuse (15A, 250V AC).

Options & Accessories Thermostats

K SERIES, TF115, RANCO



KP16110
Stage models (cordless)

K-KONTROL THERMOSTATS

Great for use on XF and UF10-G fans!

- Single KJ16110, portable single KP16110 and two KT16110 stage models.
- Reliable Johnson thermostats, low cost.
- Moisture proof box.
- Convenient flip open cover, stainless steel coil and portable hanger.
- Use anywhere portable model - simply plug control into outlet and then the device into the control.
- Two stage model for two stages of heating and/or cooling or two speed fans.
- Single and two stage models: 16 Amp rating at 120V; 8 Amp rating at 240V.
- Portable model: 16 Amp rating at 120V.
- Ideal for 120V fans & heaters.



KP16110
(Portable model with plug)



TF115 - SUNNE THERMOSTATS

- Single stage thermostat for heating or cooling.
- NEMA 4 enclosure, stainless steel coil, multi-position mounting.
- Large, easy to read, 40° - 100° F dial
- 16 Amp rating at 120V; 12 Amp rating at 240V.



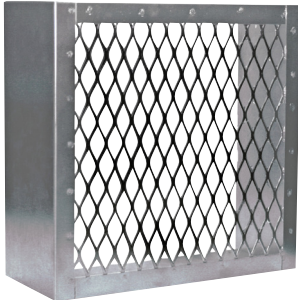
RANCO THERMOSTATS

- Single stage T1NEMA4D1 models.
- NEMA 4 enclosure, easy to read LCD display, lockout switch.
- Programmable differential (1 to 30° F).
- Wide operating range (-30° to 220° F), user selectable F/C°.
- 8' temperature probe included (extendable to 400').
- 10 Amp rating at 120V; 5 Amp rating at 240V.

Options & Accessories for AX & P Series Fans

FRONT GUARD FOR AX & P SERIES

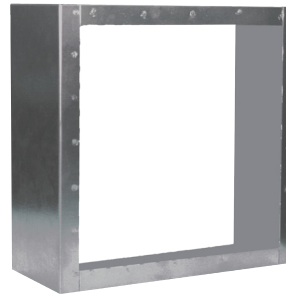
18 gauge galvanized 3/4" expanded metal screen, 6" deep.



FITS FAN	MODEL	WEIGHT (LBS)
8"	XFG8-10	6
10"	XFG8-10	6
12"	XFG12	6
14"	XFG14	8
16"	XFG16	9
18"	XFG18	10
20"	XFG20	10
24"	XFG24	13
30"	XFG30	TBA
36"	XFG36	TBA

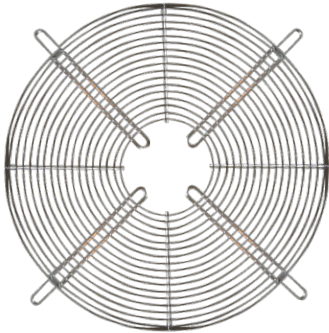
PANEL SLEEVES FOR P SERIES

Sleeves are 9 1/2" deep.



FITS FAN	MODEL	WEIGHT (LBS)
8"	PSL08	14
10"	PSL10	14
12"	PSL12	14
14"	PSL14	14
16"	PSL16	14
18"	PSL18	15
20"	PSL20	19
24"	PSL24	23
30"	PSL30	26
36"	PSL36	30

REPLACEMENT GUARDS



FITS FAN	MODEL	DESCRIPTION	WEIGHT (LBS)
8"	R-2X115	8" - 10" OSHA motor mount	3
10"	R-2X115	8" - 10" OSHA motor mount	3
12"	R-2X116	12" OSHA motor mount	3
14"	R-2X117	14" - 16" OSHA motor mount	4
16"	R-2X117	14" - 16" OSHA motor mount	4
18"	R-2X118	18" - 20" OSHA motor mount	5
20"	R-2X118	18" - 20" OSHA motor mount	5
24"	R-2X119	24" OSHA motor mount	7
30"	R-2X113	30" OSHA motor mount	8
36"	R-2X114	36" OSHA motor mount	9

MOTORIZED & GRAVITY DAMPERS FOR FRESH AIR INTAKE



MOTORIZED DAMPER

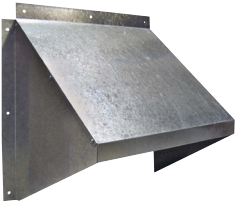
FITS FAN	MODEL #	
	MOTORIZED DAMPERS	BACK DRAFT DAMPERS
8"	SX3210X10	SR3210X10
10"	SX3210X10	SR3210X10
12"	SX3212X12	SR3212X12
14"	SX3214X14	SR3214X14
16"	SX3216X16	SR3216X16
18"	SX3218X18	SR3218X18
20"	SX3220X20	SR3220X20
24"	SX3224X24	SR3224X24
30"	SX3230X30	SR3230X30
36"	SX3236X36	SR3236X36

The Motorized dampers listed above are 110/230V.
For 24V AC, replace X with Z.



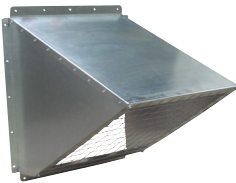
GRAVITY DAMPER

Options & Accessories Wall Exhaust Fan Hoods



GH GALVANIZED HOODS

- Economical shipping.
- Easy to assemble, galvanized hood.
- No screens.



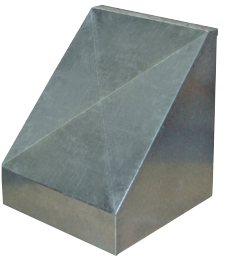
GH KNOCK DOWN HOODS

- Easy to assemble, galvanized hood.
- Includes bird screen.



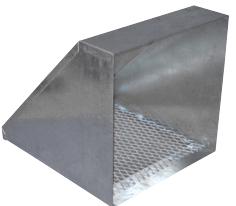
WHA HOODS

- For AX fans.
- Shipped fully assembled.
- 18 gauge galvanized weather hoods complete with bird screen.
- Optional insect screen available. Consult factory.



WHP HOODS

- For Panel fans.
- 18 gauge galvanized weather hoods complete with bird screen.
- Optional insect screen available. Consult factory.



INTAKE & EXHAUST HOODS

- Shipped fully assembled.
- 18 gauge galvanized weather hoods complete with bird screen.



PLASTIC HOODS

- Rugged, grey plastic hood.
- No screens.

HOOD MODEL	DIMENSIONS		APPROX. WEIGHT (LBS)	FANS THAT WILL FIT
	INSIDE DIMENSIONS	OUTSIDE DIMENSIONS		
GH GALVANIZED HOODS				
GH-XF12-M	14.75"W X 14.0"H	18"W X 15.75"H	4	XF12 / XB12 / SD8 / SD10 / AX8 / AX10 / AX12
GH-XF16-M	18.75"W X 17.75"H	22"W X 19.75"H	7	XF16 / XB12 / HV12 / HVA12 / ADD12 / DDP12 / DDS12 / SD12-14 / AX14-16
GH-XF20-M	22.75"W X 22"H	26"W X 23.75"H	9	XF20 / XB14 / XB16 / HV14-16 / HVA14-16 / ADD14-16 / DDP14-16 / DDS14-16 / SD16-18 / AX18-20
GH-XF24-M	26.75"W X 26"H	29"W X 27.25"H	12	XFS24
GH KNOCKDOWN HOODS				
GH-KD24	31.65"W X 31.66"H	34.65"W X 34.69"H	31	XB24 / HV24 / HVA24 / ADD24 / DDP24 / DDS24 / SD24 / AX24
GH-KD36	43.62"W X 43.93"H	46.62"W X 46.82"H	75	XB30-36 / HV30-36 / HVA30-36 / ADD30-36 / DDS30-36 / SD30-36 / AX30-36 / AX42
GH-KD48	55.62"W X 55.25"H	58.62"W X 58.82"H	TBA	XB42-48 / HV42-48 / HVA42-48 / ADD42-48 / DDS42-48 / SD42 / AX42
GH-KD60	69.76"W X 69.92"H	72.76"W X 72.95"H	TBA	XB54-60 / HV54-60 / HVA54-60 / ADD54-60
WHA HOODS				
WHA8-10	12.11"W X 12.11"H	-	13	AX08-10, SD8
WHA12	14.05"W X 14.05"H	-	16	AX12, SD10
WHA14	16.11"W X 16.11"H	-	22	AX14, SD12
WHA16	18.11"W X 18.11"H	-	26	AX16, SD14
WHA18	20.11"W X 20.11"H	-	29	AX18, SD16
WHA20	22.05"W X 22.05"H	-	31	AX20, SD18
WHA24	26.05"W X 26.05"H	-	47	AX24
WHA30	33.05"W X 33.05"H	-	59	AX30
WHA36	39.11"W X 39.11"H	-	76	AX36
WHP HOODS				
WH8-10P	14.45"W X 14.45"H	-	20	P08 / P10
WH12P	17.40"W X 17.40"H	-	16	P12
WH14P	19.20"W X 19.20"H	-	24	P14
WH16P	21.20"W X 21.20"H	-	26	P16
WH18P	23.20"W X 23.20"H	-	29	P18
WH20P	25.20"W X 25.20"H	-	44	P20
WH24P	29.15"W X 29.15"H	-	44	P24
WH30P	35.65"W X 35.65"H	-	60	P30
WH36P	41.65"W X 41.65"H	-	77	P36
EXHAUST / INTAKE / WEATHER HOODS				
EH12	16.55"W X 16.55"H	-	9	XF12 / SD8-12 / AX8-14 / XB12 / HV12 / HVA12 / ADD12 / DDP12 / DDS12
EH14	18.60"W X 18.60"H	-	15	XB14 / HV14 / HVA14 / ADD14 / DDP14 / DDS14 / SD14 / XF16 / AX16
EH16	20.60"W X 20.60"H	-	20	AX18 / SD16 / XB16 / HV16 / HVA16 / ADD16 / DDP16 / DDS16
EH18	22.55"W X 22.55"H	-	31	SD18 / XB18 / HV18 / HVA18 / ADD18 / DDP18 / DDS18 / XF20 / AX20
EH20	24.55"W X 24.55"H	-	44	SD20 / XB20 / XF24 / HV20 / HVA20 / ADD20 / DDP20 / DDS20
EH24	30.05"W X 30.05"H	-	60	SD24 / AX24 / XB24 / ADD24 / HV24 / HVA24 / DDP24 / DDS24
EH30	36.35"W X 36.35"H	-	72	SD30 / AX30 / XB30 / HV30 / HVA30 / ADD30 / DDS30 / JFHVA24
EH36	42.30"W X 42.30"H	-	104	SD36 / AX36 / XB36 / HV36 / HVA36 / ADD36 / DDS36 / JFHVA30
EH42	48.63"W X 48.63"H	-	163	XB42 / HV42 / HVA42 / ADD42 / DDS42 / JFHVA36 / SD42 / AX42
EH48	54.64"W X 54.64"H	-	TBA	XB48 / HV48 / HVA48 / ADD48 / DDS48 / JFHVA42
EH54	61.20"W X 61.20"H	-	TBA	XB54 / HV54 / HVA54 / ADD54 / JFHVA48
EH60	69.39"W X 69.39"H	-	TBA	XB60 / HV60 / HVA60 / ADD60
PLASTIC HOODS				
HFP-18G	21.50"W X 21.75"H	-	9	S8 / S10 / S12 / S14 / S16 / S18V / AX08 / AX10 / AX12 / AX14 / AX16 / AX18
HFP-24G	27.50"W X 27.75"H	-	13	S20 / S24 AX20 / AX24