

Single & Twin Forward Curved Inline Duct Blowers

200 & 9200 SERIES



200 SERIES

Indoor Applications,
Insulated or Non-Insulated

FEATURES

- Wheel Diameters: 7" through 20"
- CFM: Approximately 500 to 12,500 CFM in a single blower (Twins available).
- Static Pressure: Usage to about 3" static pressure is common, although allowable range is higher.
- Constructed from cold rolled steel, with grey baked on powder coat. The outdoor unit uses protective galvaneal steel under the powder coat.
- Forward Curved blowers operate at low RPM for low noise levels.
- Heavy duty ball bearings suitable for -65° F to +250° F.
- Keywayed shafts both ends for clockwise or counter clockwise rotation.
- Saddle type motor mounting platform provides extended belt tension adjustment range on all models.
- 9200 series may be mounted vertically or horizontally. 9200-VIB option is horizontal mount only. Cannot be vertically mounted.
- Will not "surge", "hunt", or "stall".
- Optional variable pitch motor pulley permits field adjustment (typically + or - 15%) to match air delivery needs.
- For the quietest operational needs we offer optional internal spring isolation of the blower/motor from the housing thus greatly reducing radiated cabinet noise.
- Our twins (two duct blowers on a common shaft) is a wide but not tall solution for situations where vertical space is limited.
- Quiet forward curved blowers operate at ½ the rpm of other inline solutions.
- An outdoor series, 9200, is available.



9200 SERIES

Heavy duty, Insulated Indoor
or Outdoor Applications

9200-VIB Model available with
internal Spring Vibration Isolation



TWIN UNIT

Use a common shaft for balanced air supply
by each blower. Call for pricing & availability.

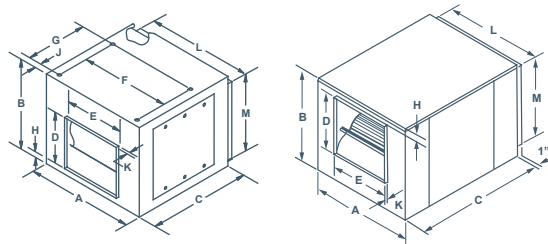


200& 9200 SERIES

Single & Twin Forward Curved Inline Duct Blowers

TYPICAL APPLICATIONS FOR OUR INLINE BLOWERS

- An Inline make-up air solution for cases where a rooftop curb mounted solution is not available.
- As an air moving module for systems built up with other components such as heating/cooling coils.
- Noise sensitive areas - the low rpm forward curved wheel typically radiates less vibration than higher rpm backward inclined wheel solutions.
 - When the application requires an air mover in a duct system located in a ceiling space.
 - Redistribution or recirculation of air in a work space.
- Interlocked with entry doors to prevent entry of cold outdoor air into retail sales space and thus greets customers with warmth.
 - Bathroom/ rest room exhaust - one duct blower serving multiple intakes.



DIMENSIONS

MODEL	A	B	C	OUTLET		F	G	H	J	K	INLET		SHAFT DIAMETER	WEIGHT (lbs) without motor
				D	E						L	M		
207	18"	15 3/8"	23"	8 1/4"	9 3/16"	14 1/2"	9 5/8"	1 1/4"	1 1/4"	7/8"	15 7/8"	13 3/8"	3/4"	43
209	21"	18"	23"	10 1/4"	11 13/16"	17 1/2"	11 3/4"	1 1/4"	1 3/4"	7/8"	19"	16"	3/4"	55
210	22 1/4"	20"	24 3/4"	11 3/8"	13 1/8"	18 3/4"	13 3/8"	1 1/4"	1 3/4"	7/8"	20 1/4"	18"	3/4"	65
212	27"	23"	27 1/2"	13 7/16"	15 5/8"	23 1/2"	16 1/8"	1 1/4"	1 3/4"	7/8"	25"	21"	3/4"	82
215	33 1/2"	28"	32"	15 7/8"	18 5/8"	28"	19 1/2"	2 5/8"	1 3/4"	7/8"	30 1/2"	25"	1"	140

MODEL	A	B	C	OUTLET		F	G	H	J	K	INLET		SHAFT DIAMETER	WEIGHT (lbs) without motor
				D	E						L	M		
9209	21"	18"	23"	11 1/4"	12 3/4"	N/A	N/A	1"	N/A	1 1/8"	19"	16"	3/4"	61
9210	22 1/4"	20"	24 3/4"	12 3/8"	14 1/8"	N/A	N/A	1"	N/A	1 1/8"	20 1/4"	18"	3/4"	70
9212	30 1/8"	24 3/4"	34"	14 1/2"	16 5/8"	N/A	N/A	2 1/8"	N/A	1 1/8"	25 1/8"	21 1/8"	1"	143
9215	33 3/4"	28 5/8"	38 1/8"	17"	19 5/8"	N/A	N/A	2 1/8"	N/A	1 1/8"	30 5/8"	25 1/4"	1"	176
9218	41 1/2"	34"	44"	19 5/8"	22 5/8"	N/A	N/A	2 3/4"	N/A	1 1/8"	35 3/8"	31 5/8"	1"	323
9220	44 3/4"	41 1/8"	57 1/2"	25 3/4"	25 3/4"	N/A	N/A	3"	N/A	1 1/8"	38 3/8"	35 1/8"	1 7/16"	515

PERFORMANCE SPECS

MODEL	TYPICAL MAXIMUM CFM @ SP																Min HP	Max HP				
	1/2" SP				1" SP				1 1/2" SP				2" SP						2 1/2" SP			
	CFM	BHP	FEI	FEPact (kW)	CFM	BHP	FEI	FEPact (kW)	CFM	BHP	FEI	FEPact (kW)	CFM	BHP	FEI	FEPact (kW)			CFM	BHP	FEI	FEPact (kW)
207	1400	0.68	0.80	0.69	1300	0.69	0.96	0.70	1100	0.66	1.05	0.67	1000	0.72	1.08	0.73	800	0.73	1.04	0.74	1/6	3/4
209	2000	0.75	0.91	0.76	1800	0.75	1.09	0.76	1500	0.71	1.21	0.72	1100	0.71	1.12	0.72	800	0.71	1.04	0.72	1/6	3/4
9209	2500	1.36	0.65	1.30	2400	1.41	0.81	1.34	2300	1.5	0.91	1.42	2100	1.48	1.01	1.40	1900	1.49	1.07	1.41	1/6	1 1/2
210	3000	1.46	0.77	1.38	2800	1.41	0.96	1.34	2600	1.49	1.04	1.41	2300	1.5	1.09	1.42	1900	1.47	1.08	1.39	1/6	1 1/2
9210	2800	1.39	0.74	1.20	2600	1.45	0.81	1.37	2300	1.43	0.91	1.35	2000	1.49	0.93	1.40	1600	1.46	0.92	1.38	1/6	1 1/2
212	3700	1.44	0.86	1.37	3300	1.47	0.99	1.39	2900	1.5	1.07	1.03	2400	1.47	1.10	1.39	1600	1.43	0.93	1.36	1/6	1 1/2
9212	4900	2.91	0.63	2.62	4600	3	0.74	2.70	4200	2.92	0.84	2.63	3900	2.99	0.91	2.69	3500	2.92	0.98	2.63	1/6	3
215	6100	2.9	0.77	2.61	5800	2.95	0.93	2.65	5000	2.98	0.96	2.68	4100	2.93	0.94	2.64	3700	2.93	1.00	2.64	1/3	3
9215	7700	4.95	0.62	4.33	7200	4.88	0.74	4.27	6800	5	0.83	4.37	6300	4.96	0.91	4.34	5800	4.97	0.96	4.35	1/3	5
218	9700	4.93	0.74	4.32	9000	4.97	0.86	4.35	8200	4.95	0.96	4.33	7400	4.97	1.01	4.35	6200	4.94	0.98	4.32	1/2	5
9218	9500	4.95	0.71	4.33	8800	4.91	0.85	4.30	8000	4.94	0.93	4.32	7200	4.98	0.98	4.36	6100	4.92	0.97	4.31	1/2	5
9220	16000	14.78	0.45	12.50	15400	14.88	0.54	12.50	14800	14.96	0.62	12.60	14100	14.9	0.69	12.60	13300	14.8	0.75	12.50	3/4	15

Power rating (BHP) does not include transmission losses. Performance certified is for installation type B: Free inlet, Ducted outlet. Performance ratings do not include the effect of appurtenances (accessories).



SCAN TO VIEW FEI CHARTS



SCAN TO USE DELAIR SOFTWARE

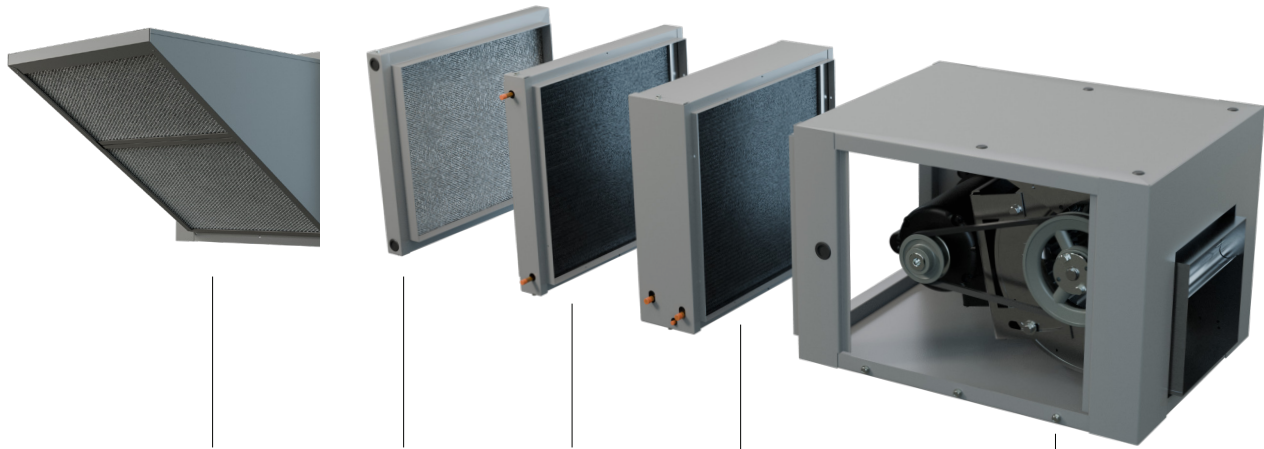


Canarm certifies that the 9200 Series shown herein with the AMCA seal are licensed as such. The ratings shown are based on tests and procedures performed in accordance with AMCA Publications 211 & 311 and comply with the requirements of the AMCA Certified Ratings Programme.

The AMCA certified ratings seal applies to air and sound performance only. The Series shown herein are not approved by AMCA for FEI ratings.

TYPICAL SYSTEM COMPRISED OF FILTER SECTION, HEATING COIL & DUCT BLOWER

(Shown with side panels removed for illustrative purposes.)



INTAKE HOOD

F210 FILTER SECTION

HC-10 HOT WATER COIL

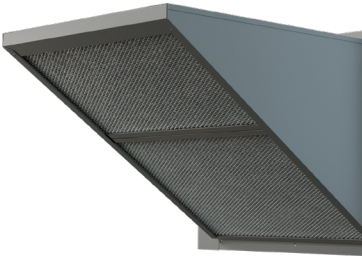
CW-10 COOLING COIL

210 DUCT BLOWER

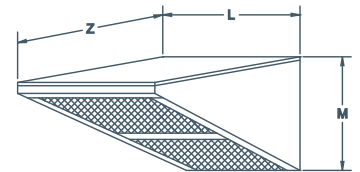
Options & Accessories Filter Sections & Intake Hoods

H9200 INTAKE HOOD

For 9200 Series Duct Blowers

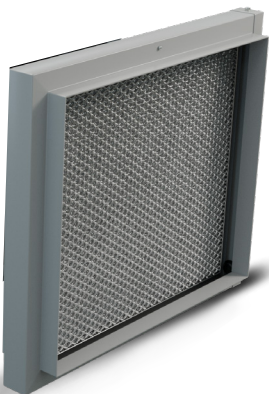


MODEL	L	M	Z	FILTER		UNIT WEIGHT (LBS)
				SIZE	QUANTITY	
H9209	19 1/4"	16 9/16"	21 1/4"	16" X 24"	1	14
H9210	20 1/2"	18 9/16"	25 3/4"	15" X 20"	2	16
H9212	25 3/8"	21 9/16"	30 3/4"	20" X 25" 16" X 25"	2	27
H9215	31 3/16"	25 13/16"	33 1/2"	20" X 28 1/2"	2	38
H9218	35 5/8"	32 11/16"	40 1/4"	20" X 25" (2) 16" X 25"	3	50
H9220	38 5/8"	35 9/16"	22"	FILTERS NOT INCLUDED USE F9220A		40

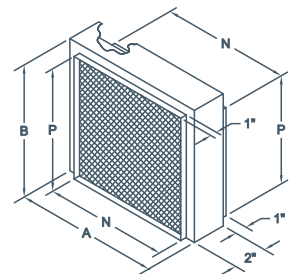


F200A & F9200A FILTER SECTION

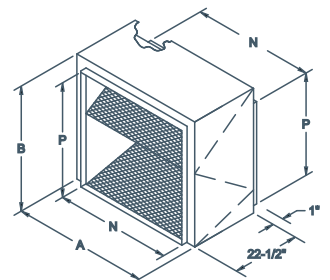
For IDB, 200 & 9200 Series Duct Blowers



MODEL	A	B	N	P	FILTER		UNIT WEIGHT (LBS)
					SIZE	QUANTITY	
F207A	17 3/4"	15 3/8"	16"	13 1/2"	14 1/8" X 16 5/8"	1	11
F209A	21"	18"	19 1/8"	16 1/8"	16 3/4" X 19 7/8"	1	12
F210A	22 1/4"	20"	20 3/8"	18 1/8"	18 3/4" X 21 1/8"	1	14
F212A	27"	23"	25 1/8"	21 1/8"	21 3/4" X 25 7/8"	1	16
F215A	32 1/2"	26 3/4"	30 5/8"	25 1/8"	25 3/4" X 31"	1	21
F218A	37"	33 1/4"	35 1/4"	31 1/2"	32 1/4" X 35 7/8"	1	46
F9220A	39 3/4"	37 1/4"	38 1/2"	35 1/4"	20" X 25"	6	64



10A



Series F9200A

Options & Accessories Heating & Cooling Coils



HC SERIES - 2 Row Coil

Hot Water Heating Coils

Horizontal or Vertical Installation



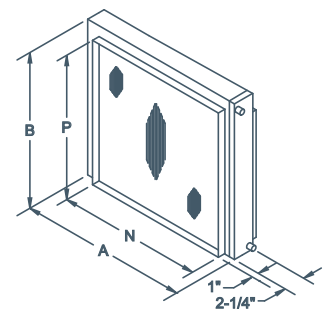
CW SERIES - 4 Row Coil

Chilled Water Cooling Coils with built in Condensate pan

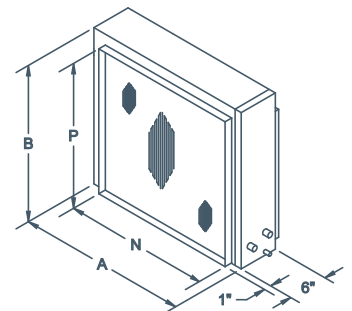
FEATURES

- Designed for use with matching Canarm 200, IDB or 9200 Series Duct Blower & Filter Section.
- Modular concept provides the flexibility and convenience of assembling readily available components into a system to meet custom heating and cooling requirements.
- Lead free construction.
- Grey baked powder coat cabinet finish.
- Convenient for both new or renovation installations.
- Aluminum finish on copper tube construction.
- Suitable for remote installation in duct.
- All coils are sized to mount to the inlet of the corresponding sized duct blower or coil and filter section as illustrated in the modular set up.

DIMENSIONS



HC SERIES



CW SERIES

MODEL	HC-CW COILS					HC COILS			CW COILS		
	A (HC)	A (CW)	B	N	P	INLET	OUTLET	WEIGHT (LBS)	INLET	OUTLET	WEIGHT (LBS)
HC-07 & CW-07	17 3/4"	17 3/4"	15 3/8"	16"	13 1/2"	5/8"	5/8"	10	5/8"	5/8"	22
HC-09 & CW-09	21"	21"	18"	19 1/8"	16 1/8"	5/8"	5/8"	14	7/8"	7/8"	29
HC-10 & CW-10	22 1/4"	22 1/4"	20"	20 3/8"	18 1/8"	5/8"	5/8"	17	7/8"	7/8"	36
HC-12 & CW-12	27"	27"	23"	25 1/8"	21 1/8"	3/4"	3/4"	23	7/8"	7/8"	42
HC-15 & CW-15	32 1/2"	33 1/2"	26 3/4"	30 5/8"	25 1/8"	3/4"	3/4"	32	7/8"	7/8"	61

DRAIN IS 5/8" IN -OD

DUCT BLOWER	MATCHING COIL SECTION			
	HEATING COIL	CHILLED WATER COIL	FILTER	INTAKE HOOD
207 / IDB07	HC-07	CW-07	F207A	NA
209 / IDB09 / 9209	HC-09	CW-09	F209A	H9209
210 / IDB10 / 9210	HC-10	CW-10	F210A	H9210
212 / IDB12 / 9212	HC-12	CW-12	F212A	H9212
215 / IDB15 / 9215	HC-15	CW-15	F215A	H9215

Options & Accessories Vibration Isolators & More



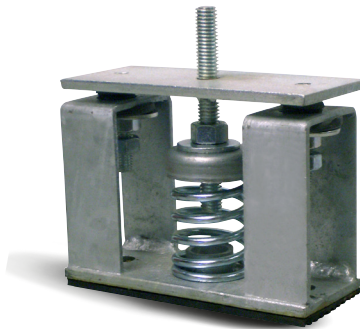
VIBRATION ISOLATORS RUBBER

- Reduces vibration transmission to floors or roof surfaces.
- Suitable for indoor and outdoor use.



VIBRATION ISOLATORS SPRING

- Reduces vibration transmission to floors or roof surfaces.
- Suitable for indoor use only.



VIBRATION ISOLATORS OUTDOOR SPRING

- Reduces vibration transmission to floors or roof surfaces.
- Designed for outdoor use. Housed to resist lateral motion from winds.



HANGING VIBRATION ISOLATORS

- Hanging rubber-in-shear isolators.
- Reduces vibration transmission to floors or roof surfaces.
- Suitable for indoor and outdoor use.