

OWNER'S MANUAL

BLAKESLEE

Division of The Legacy Companies

UNDERCOUNTER DISHWASHER

UC20



Blakeslee – Division of The Legacy Companies
1228 Capitol Drive
Addison, IL 60101
Phone (630) 532-5021
Fax (630) 532-5020
www.blakesleeinc.com
service@blakesleeinc.com

ELECTRICAL WARNINGS

THIS MANUAL HAS BEEN PREPARED FOR PERSONNEL QUALIFIED
TO INSTALL ELECTRICAL EQUIPMENT.

PERSONNEL SHOULD PERFORM THE INITIAL FIELD STARTUP AND ADJUSTMENTS
OF THE EQUIPMENT COVERED IN THIS MANUAL.

READ THIS MANUAL THOROUGHLY BEFORE OPERATING, INSTALLING OR PERFORMING
MAINTENANCE ON THE EQUIPMENT.



WARNING: Failure to follow all the instructions in this manual can cause property damage, injury or death.



WARNING: Improper installation, adjustment, alteration, service or maintenance can cause property damage, injury or death.



WARNING: Electrical connections should be performed only by a certified professional.



WARNING: Electrical and grounding connections must comply with the applicable portions of the National Electric Code and/or all local electric codes. Failure to comply with this procedure can cause property damage, injury or death.



WARNING: Before connecting the unit to the electrical supply, verify that the electrical and grounding connections comply with the applicable portions of the National Electric Code and/or all local electrical codes. Failure to comply with this procedure can cause property damage, injury or death.



WARNING: Before connecting the unit to the electrical supply, verify that the electrical connection agrees with the specifications on the data plate. Failure to comply with this procedure can cause property damage, injury or death.



WARNING: UL73 Grounding Instructions: This appliance must be connected to a grounded, metal, permanent wiring system; or an equipment-grounding conductor must be run with the circuit conductors and be connected to the equipment-grounding terminal or lead on the appliance. Failure to comply with this procedure can cause property damage, injury or death.



WARNING: Appliances equipped with a flexible electric supply cord are provided with a three-prong grounding plug. It is imperative that this plug be connected into a properly grounded three-prong receptacle. Failure to comply with this procedure can cause property damage, injury or death.



WARNING: If the receptacle is not the proper grounding type, contact an electrician. Do not remove the grounding prong from the plug. Failure to comply with this procedure can cause property damage, injury or death.



WARNING: Before performing any service that involves electrical connection or disconnection and/or exposure to electrical components, always perform the Electrical LOCKOUT/TAGOUT Procedure. Disconnect all circuits. Failure to comply with this procedure can cause property damage, injury or death.



WARNING: Before removing any sheet metal panels, always perform the Electrical LOCKOUT/TAGOUT Procedure. Be sure all circuits are disconnected. Failure to comply with this procedure can cause property damage, injury or death.



WARNING: Do not operate this equipment without properly placing and securing all covers and access panels. Failure to comply with this procedure can cause property damage, injury or death.



WARNING: Do not use or store gasoline or other flammable vapors or liquids in the vicinity of this or any other appliance. Failure to comply can cause property damage, injury or death.



WARNING: In the event of a power failure, do not attempt to operate this appliance. Failure to comply can cause property damage, injury or death.

ELECTRICAL LOCKOUT/TAGOUT PROCEDURE



WARNING:

Before performing any service that involves electrical connection or disconnection and/or exposure to electrical components, always follow the Electrical LOCKOUT/TAGOUT Procedure. Disconnect all circuits. Failure to comply with this procedure can cause property damage, injury or death.

The Electrical LOCKOUT/TAGOUT Procedure is used to protect personnel working on an electrical appliance. Before performing any maintenance or service that requires exposure to electrical components, follow these steps:

1. In electrical box, place appliance circuit breaker into OFF position.
2. Place a lock or other device on electrical box cover to prevent someone from placing circuit breaker ON.
3. Place a tag on electrical box cover to indicate that appliance has been disconnected for service and power should not be restored until tag is removed by maintenance personnel.
4. Disconnect appliance power cord from electrical outlet.
5. Place a tag on the cord to indicate that unit has been disconnected for service and power should not be restored until tag is removed by maintenance personnel.

TABLE OF CONTENTS

GENERAL DESCRIPTION.....	5
Model UC20.....	5
Door Safety Switch.....	5
Digital Display.....	5
Detergent Pumps.....	5
Heater.....	5
Scrap Screen Filters.....	5
Wash Cycles.....	5
Pump.....	5
Motor.....	5
Control Circuit.....	5
Automatic Tank Fill.....	5
Final Rinse Booster.....	5
Racks per Hour.....	5
Power Saving Mode.....	5
Wash & Rinse Arms.....	5
Insulation.....	5
INSTALLATION.....	6
Visual Inspection.....	6
Unpacking the Dishwasher.....	6
Leveling the Dishwasher.....	6
Plumbing the Dishwasher.....	6
Fill/Rinse.....	6
Drains.....	6
Electrical Connections.....	7
OPERATION.....	8
Preparing the Dishwasher for Use.....	8
Soiled Ware Operation.....	9
Loading the Dishwasher.....	9
Detergent.....	10
Operating the Dishwasher.....	10
Programmable Mode.....	11
Shutdown, Cleaning & Maintenance.....	11
TROUBLESHOOTING.....	12
Error Codes.....	13
WIRING DIAGRAM.....	14-18
EXPLODED VIEWS.....	19-27
WARRANTY.....	28

GENERAL DESCRIPTION

Model UC20

The UC20 undercounter dishwasher is constructed of 18 gauge stainless steel. An 18-5/16" door opening allows for oversized ware such as 18' x 26" sheet pans to be washed.

Door Safety Switch

The UC20 is equipped with a door safety switch. The machine will not operate when the door is open. If the door is accidentally opened during a cycle, the machine will stop operating.

Digital Display

The unit is equipped with a digital display allowing simplified operational instructions.

Detergent Pumps

All units are equipped with built in detergent dispensers and rinse dispensers.

Heater

Wash tank water is heated by electricity and are available in 208, 240, 440, or 480 VAC.

Scrap Screen Filters

Stainless steel scrap filters are used to protect wash pump. These filters should be cleaned periodically throughout the washing period.

Wash Cycles

All units contain seven independent cycles: economy, economy plus, glassware, flatware, dishware, pot & pan, and programmable.

Control Circuit

All units are supplied with a 24 VAC control circuit.

Automatic Tank Fill

All machines are supplied with automatic wash tank fill.

Final Rinse Booster

Machines are equipped with a built-in electric booster. These boosters are designed to raise the rinse water temperature from 140°F to 180°F-185°F.

Racks per Hour

Unit is capable of washing up to 50 racks per hour in the economy modes.

Wash & Rinse Arms

Upper and lower wash and rinse arms are constructed of stainless steel and are interchangeable. Periodic cleaning is required.

Insulation

The unit is fully insulated to protect the user from excessive heat and allow the unit to operate quietly.

Power Saving Mode

All machines have an automatic power saving mode that regulates and reduces energy consumption if the unit is left unattended for over 30 minutes.

Pump Motor

The unit is equipped with a 0.9 HP motor.

INSTALLATION

Visual Inspection

Before installing the unit, inspect the shipping container and machine for damage. A damaged container may indicate there is damage to the machine. If there is damage to both the container and machine, do not throw away the container. The dishwasher has been inspected and packed at the factory and is expected to arrive in an undamaged condition. However, rough handling by carriers or others may result in damage to the unit while in transit. If such a situation occurs, do not return the unit to Blakeslee; instead, contact the carrier and ask them to send a representative to the site to inspect the damage to the unit and to complete an inspection report. You must contact the carrier within 48 hours of receiving the machine. Also, contact the dealer where you purchased the unit.

Unpacking the Dishwasher

Once the machine has been removed from the container, make sure that there are no parts missing from the machine. This may not be obvious at first. If an item is missing, contact Blakeslee immediately to have the missing item shipped to you.

Leveling the Dishwasher

The dishwasher must be level to operate correctly. This allows the door to open and close properly and ensures the best results while washing. The unit comes with adjustable feet. Ensure that the unit is level from side to side and from front to back before making any service connections.

Plumbing the Dishwasher

All plumbing connections must comply with all applicable local, state, and national plumbing codes. The installing plumber must flush the incoming water line thoroughly prior to connecting it to the dishwasher. Any valves that are fouled as a result of foreign matter left in the water line, and any expenses resulting from this fouling, are not covered under the manufacturer's warranty.

Fill/Rinse

Final Rinse water is used to fill the dishwasher's booster and wash tank. The water supply must have an incoming water temperature of 140°F with a dynamic flow pressure of 15 to 25 PSI at the dishwasher.

If the incoming water supply pressure is below the required 15 PSI, an optional pressure booster pump will be required. If the incoming water supply pressure is greater than 25 PSI, a pressure reducing valve will be needed.

Drains

Drain connections must comply with all local and national code requirements. Connect the tank drain to the building drain connection using 1/2 inch hose with 3/4 NPT fitting.

ELECTRICAL CONNECTIONS



WARNING

Before performing any service that involves electrical connection or disconnection and/or exposure to electrical components, always perform the Electrical LOCKOUT/TAGOUT Procedure. Disconnect all circuits. Failure to comply with this procedure can cause property damage, injury or death.

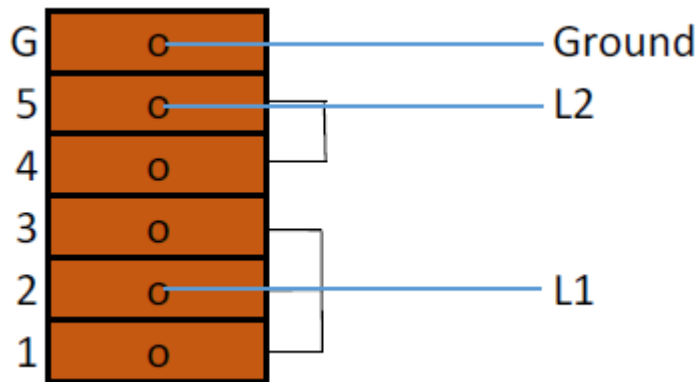
Refer to the unit's data plate before making any electrical connections.

Any connections must correspond to the information specified on the data plate. A fused disconnect switch or circuit breaker (not supplied) MUST be installed in the electrical supply line for the dishwasher.

This service connection must meet all local and national electrical code requirements. All connections are made at one common location in the control box. The control box cover is lipped and can be opened by removing two (2) #10-32 screws.

Use $\frac{3}{4}$ " knockout hole in back of dishwasher to connect to terminal block located on front of unit. Incoming connection shown below.

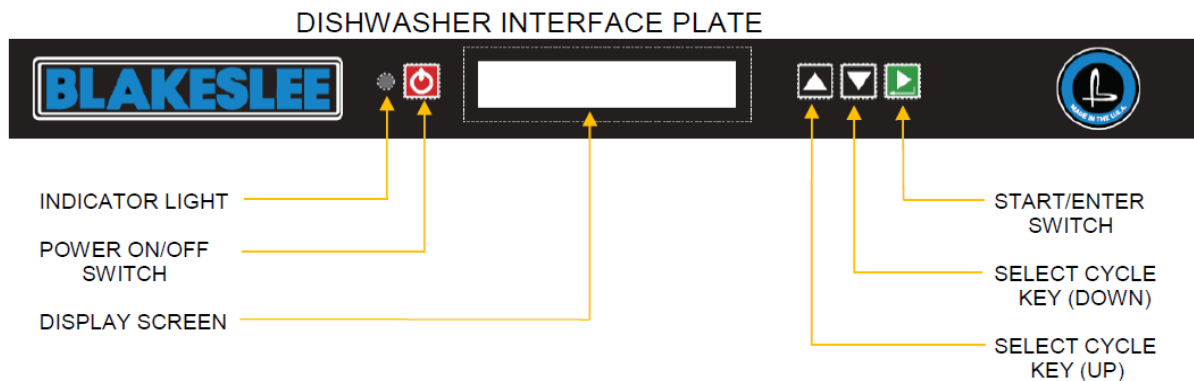
240 Volt 1 Phase



OPERATION

Preparing the Dishwasher for Use

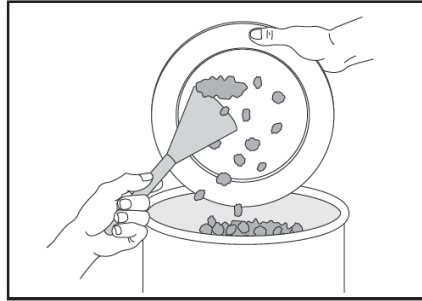
1. Ensure that all spray arms spin freely and that scrap filter is properly installed.
2. Close dishwasher door.
3. Turn on main water supply to dishwasher.
4. Turn on main power supply to dishwasher.
5. Press dishwasher Power On/Off switch to fill dishwasher. Blue indicator light will appear.
6. The default language that appears on the display screen is set to English. The default temperature that appears on the display screen is set to Fahrenheit. To change either one of these settings, press and hold the Select Cycle Up and Down Keys simultaneously for fifteen seconds. This will prompt the dishwasher into a setup screen. To change language, press the Select Cycle Down Key until the desired language appears on the display screen. Press the Select Cycle Up Key to save language setting. Repeat for temperature setting. When all selections have been made, depress the Start/Enter switch to exit the setup screen.
7. Load Washer (see proper procedures for scraping and loading ware)
8. Close dishwasher door.



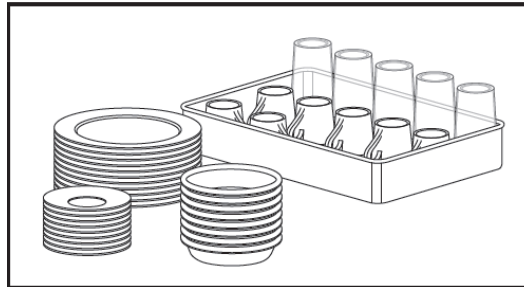
SOILED WARE OPERATION

To increase speed and efficiency and reduce breakage, a few simple rules need to be observed:

- All food must be removed from dishware before placing them in stacks. This will maintain cleaner wash water and reduce detergent usage.



- Stackable ware, such as dishes and trays, should have food debris removed and be placed in manageable stacks. A “buildup” area should be designated for these stacks until dish racks are filled.
- Items such as coffee cups, glasses and bowls, do not stack well and should be placed directly into racks for transport.



- When racks are filled, they should be kept in the buildup area until they can be washed.
- Good organization is key to speed and efficiency in dish room operation, as well as reduced breakage.
- Silverware should be presoaked in a sink or other container to keep food particles from drying out. Silverware should then be placed in an appropriate rack and sent through the dishwasher.

Note: When placing silverware in flat racks, do not overload. The silverware should be spread out evenly in the rack so the surfaces are exposed and can be cleaned by the dishwasher’s spray.

Note: As much as possible, keep soil from entering the dishwasher. This will help maintain cleaner wash water and reduce detergent usage.

LOADING THE DISHWASHER

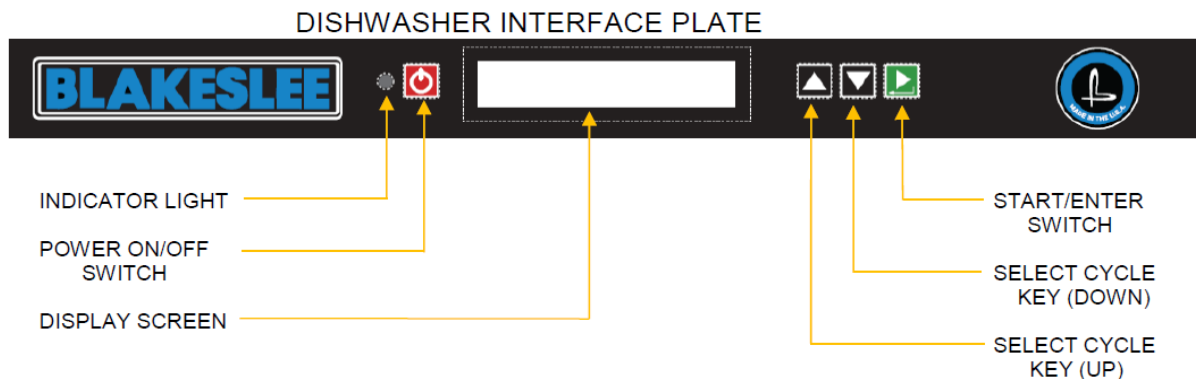
Wash similar dishes at the same time, as often as possible, to reduce sorting once the dishes have been cleaned. When several racks in the buildup area have been filled, run them through the dishwasher one after the other. This will allow the loading operator to return to scrapping and stacking.

DETERGENT

Use a low-suds, good commercial grade detergent. Never use a foaming soap or soap flakes. Your local detergent representative knows the capabilities of their detergents and can determine the proper treatment of your water for proper use with the manufacture's product. The wash water must be kept at an effective strength to obtain good washing results. Ask your local detergent supplier for their advice.

OPERATING THE DISHWASHER

Once the wash tank is filled and the dishwasher is properly loaded, choose a cycle mode per the following instructions:



1. Use the up/down arrows on the Select Cycle Key to choose the desired ware-washing cycle. The choices are: Economy (default), Economy Plus, Glassware, Flatware, Dishware, Pots and Pans, and Programmable.
2. "HEATING UP WATER". The indicator light is red and the wash cycle cannot start until the dishwasher reaches the required temperature. An exception to waiting period is the Economy cycle; in which, the wash cycle can be started regardless of water temperatures.
3. When proper temperatures are reached, a green indicator light appears and the dishwasher is ready for a washing cycle. To start the washing cycle, press the Start/Enter switch.
4. At the beginning of the wash cycle, a detergent pump will systematically add detergent into the wash tank.
5. At the end of the wash cycle, a blue indicator light appears. The final rinse is now in process. The dishwasher will perform a slight draining operation prior to the final rinse cycle. Towards the end of the rinse cycle, a rinse aid will automatically inject the additive into the final rinse water line.
6. Operation is complete when the blue indicator light turns off.
7. The dishwasher is ready for the next loading session.

NOTE: It is important to check and clean the strainer when prompted to do so.

A "**CLEAN STRAINER**" prompt will appear after:

- a. Several loads have been washed in the same washing mode.
- b. Washing mode has been changed (e.g. changing from a dishware mode to a flatware mode).

PROGRAMMABLE MODE

The programmable mode allows an operator to manually select and program a custom wash and rinse cycle. Selections include:

Wash and rinse mode

- Low
- Medium
- Heavy

Temperature Modes

- Wash - 150°F to 170°F
- Rinse - 180°F to 190°F

The default in the wash mode is “low”. The default in the temperature mode is 150°F wash and 180°F rinse. To change either one of these settings, press and hold the Select Cycle Up and Down Keys simultaneously for fifteen seconds. This will prompt the dishwasher into a setup screen. To change Wash and rinse mode, press the Select Cycle Down Key until the desired cycle appears on the display screen. Press the Select Cycle Up Key to save the cycle. Repeat for wash and rinse temperature settings. When all selections have been made, press the Start/Enter switch to exit the setup screen.

CYCLE TIME AND TEMPERATURES

Cycle	Wash Time (sec)	Rinse Time (sec)	Dwell Time (sec)	Total Cycle (sec)	Wash Temp. F/°C	Rinse Temp. F/°C
Economy	35	12	5	52	150/ 65.6	180/ 82.2
Economy Plus	35	12	5	52	150/ 65.6	180/ 82.2
Glassware	90	20	10	120	160/ 71.1	180/ 82.2
Flatware	90	20	10	120	160/ 71.1	180/ 82.2
Dishware	120	15	8	143	160/ 71.1	160/ 71.1
Pots & Pans	180	15	8	203	170/ 76.7	180/ 82.2
Programmable	a/r	a/r	a/r	30- 300	150-170/ 65.6-76.7	180-195/ 82.2-90.6

Note: Rinse and dwell times dependent upon incoming flow pressure.

Shutdown and Cleaning

An important part of maintaining the dishwasher is keeping it clean. A thorough cleaning before shutting the unit down will help keep it working at peak performance.

Shutdown

1. Press dishwasher once to allow dishwasher to fully drain.
2. Press Power On/Off switch a second time to power down the unit.

Cleaning

1. Open door and allow interior to cool down before cleaning.
2. Remove the scrap filter screens and empty them. Take them to a sink and clean them using a suitable brush. Make sure all debris is removed. Rinse thoroughly.
3. Inspect the rotating wash arms for blockage of any opening and free rotation. Remove and clean as needed.
4. Thoroughly wash and rinse the interior of the dishwasher.
5. Leave door open to dry interior.

TROUBLESHOOTING

Problem	Possible Cause	Corrective Action
Dishwasher does not run	Main power off	Check breaker panel
Dishwasher does not fill	Main water off	Open supply valve
	Rinse nozzles clogged	Clean rinse nozzles
	Solenoid filter clogged	Clean filter
	Lime build-up	De-Lime rinse line
	Defective pressure switch	Replace pressure switch
Indicator light flashing and/or error code is displayed on screen	See error codes	
Poor wash results	No detergent supplied	Add detergent supply
	Ware loaded incorrectly	Load ware correctly
	Clogged spray arms	Clean spray arms
	Detergent dispenser defective	Contact factory
	Wash water dirty	Drain and refill tank
	Insufficient wash time	Select a longer wash mode or repeat cycle
	Low water temperature	Contact factory
	Foam developing	Use a low suds detergent or reduce the amount of rinse aid by adjusting the dispenser screw
	Clogged sump filter	Clean sump filter
Streaks and spotting on dishes and glasses	Too much rinse aid being dispensed	Reduce the amount of rinse aid by adjusting the dispenser screw
	Water too hard	Contact detergent representative
	Clogged rinse nozzles	Clean rinse nozzles
	Insufficient flow pressure	Increase incoming flow pressure to 20-25 psi

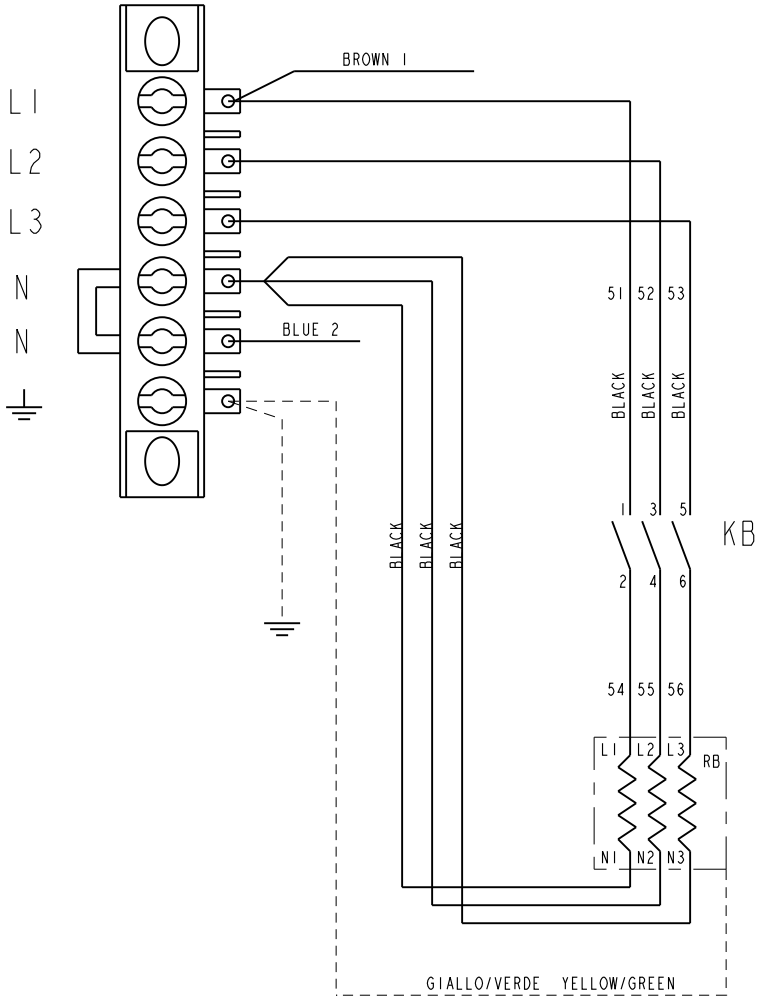
ERROR CODES

Resetting an error code

An error code can be reset by pressing the Power On/Off switch three consecutive times. If the error code fails to reset, refer to the below chart before contacting factory.

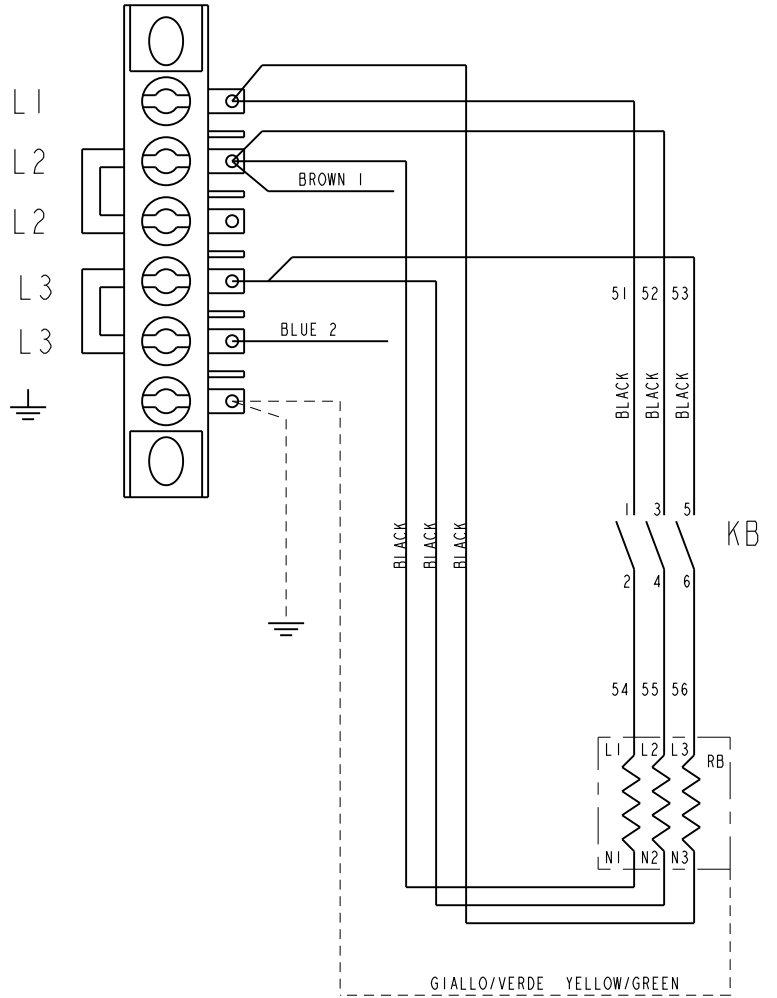
ERROR CODES		
B1	heat alarm	Check power connection to booster element
B2	rinse failed	Check incoming water supply and flow pressure
B3	overheating	Contact factory
E1	water load	Open the main water supply valve. Contact factory
T1	heating	Check power connection to tank heating element
T2	overheating	Contact factory
T3	drain	Check drain pump operation and sump filter
T4	sensor	Check for proper polarity connection and/or loose connection
T5	high level	Drain and load tank
T6	low level	Drain and load tank Check incoming water and flow pressure

RB=6000/4500W
 MAIN CABLE 5X1.2mm²



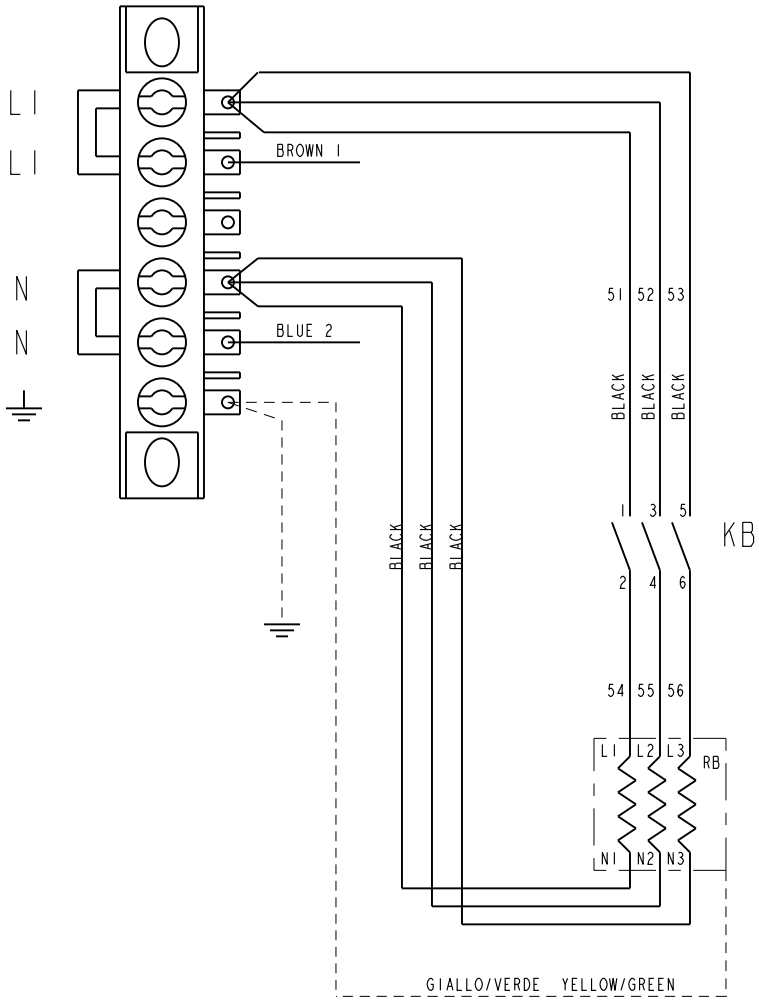
400-415 3P+N 50/60HZ

RB=6000/4500W
 MAIN CABLE 4X2.5mm²



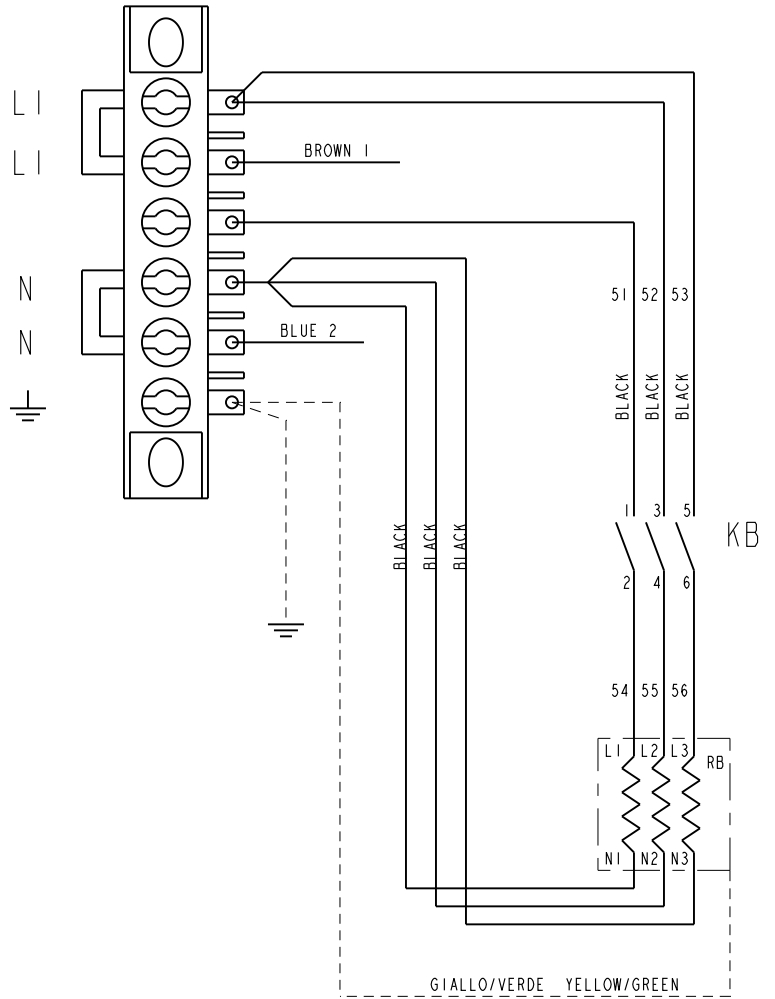
230-240 3P+N 50/60HZ

RB=6000/4500W
 MAIN CABLE 3X4mm²



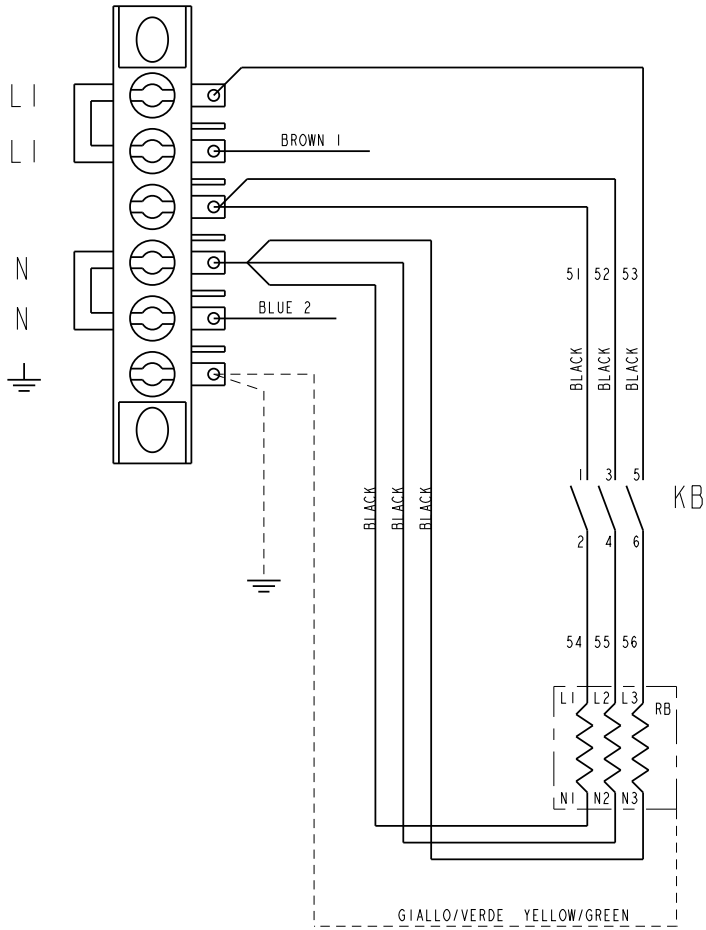
230-240 L1+N 50/60HZ

RB=4000/3000W
 MAIN CABLE 3X4mm²



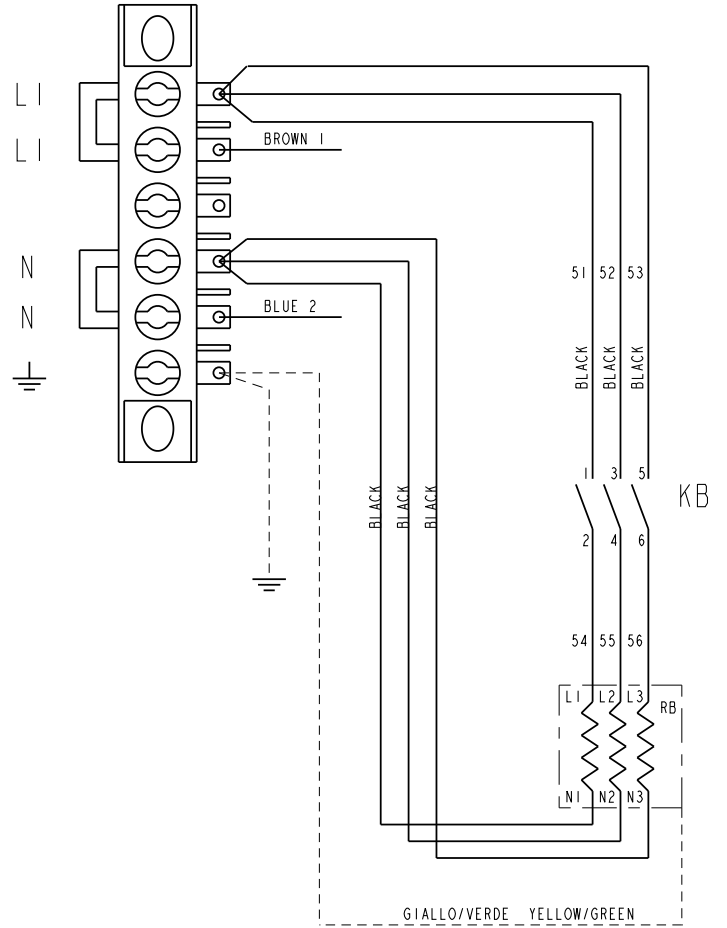
220-240 L1+N 50/60HZ

RB=2000/1500W
MAIN CABLE 3X4mm²



230 L1+N 50HZ

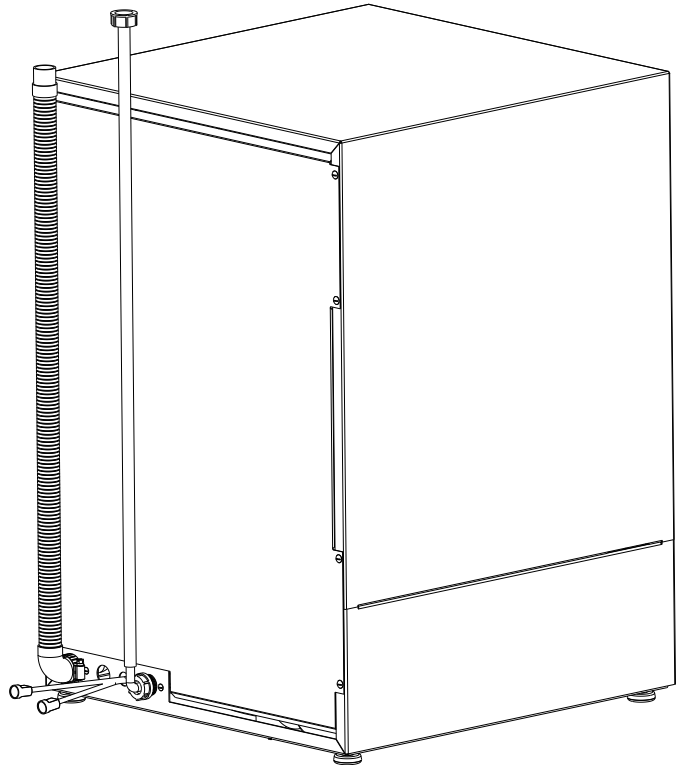
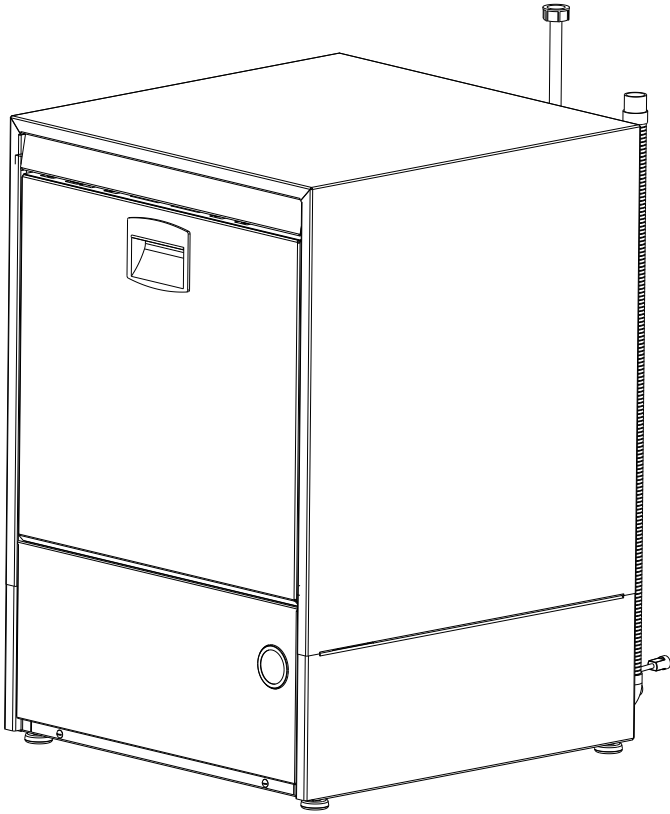
RB=2370W
MAIN CABLE 3X4mm²

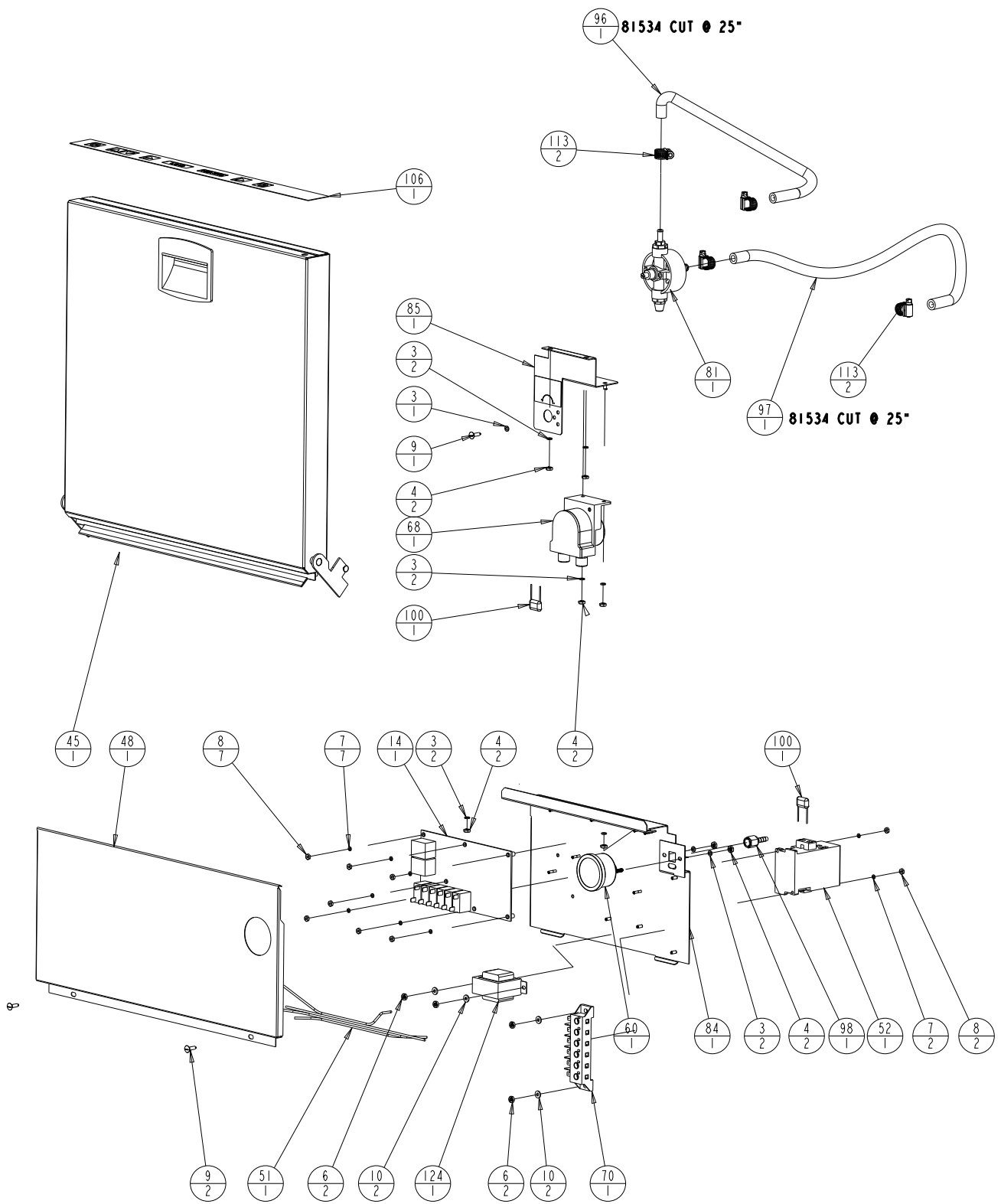


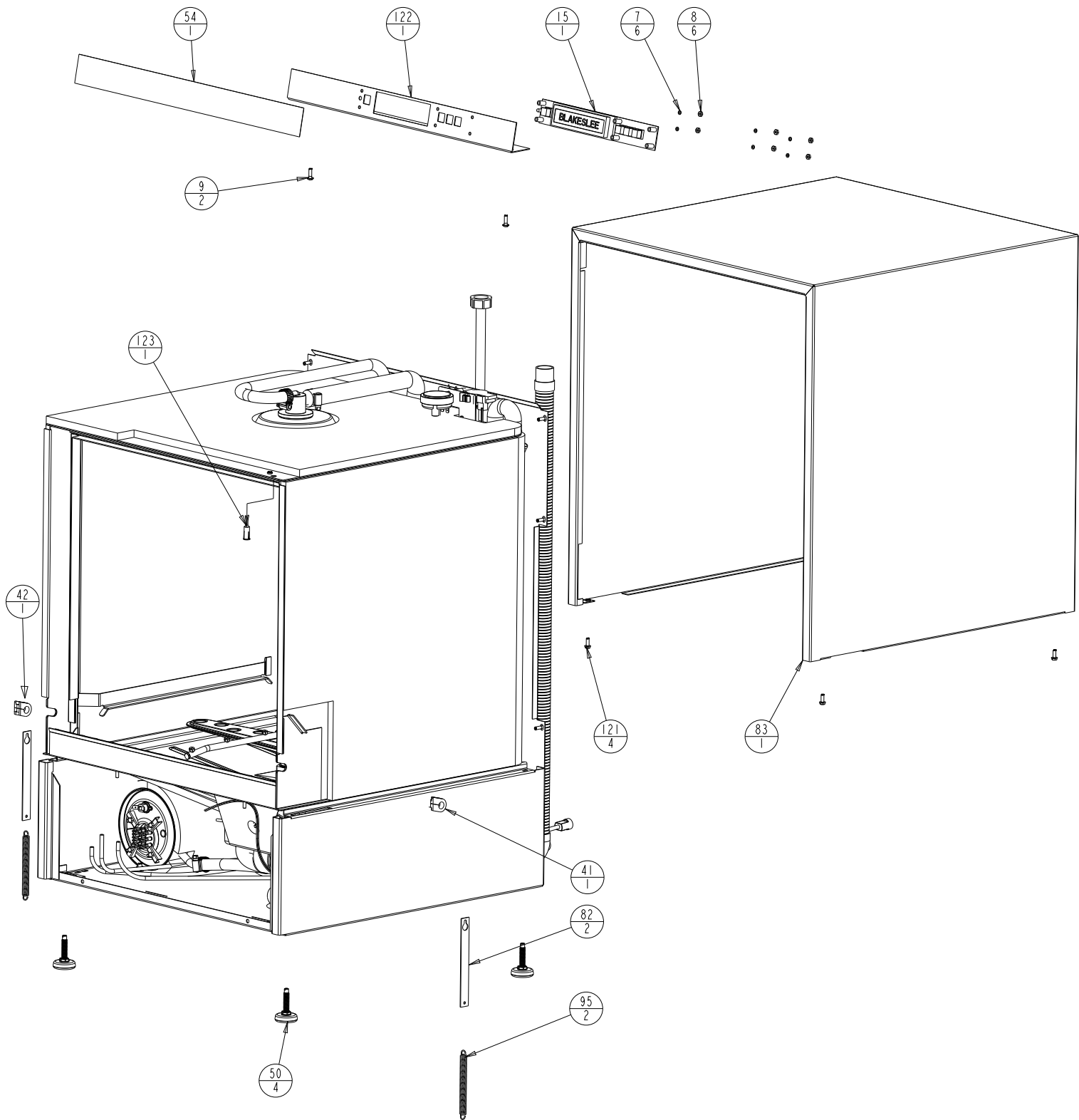
240 L1+N 50HZ

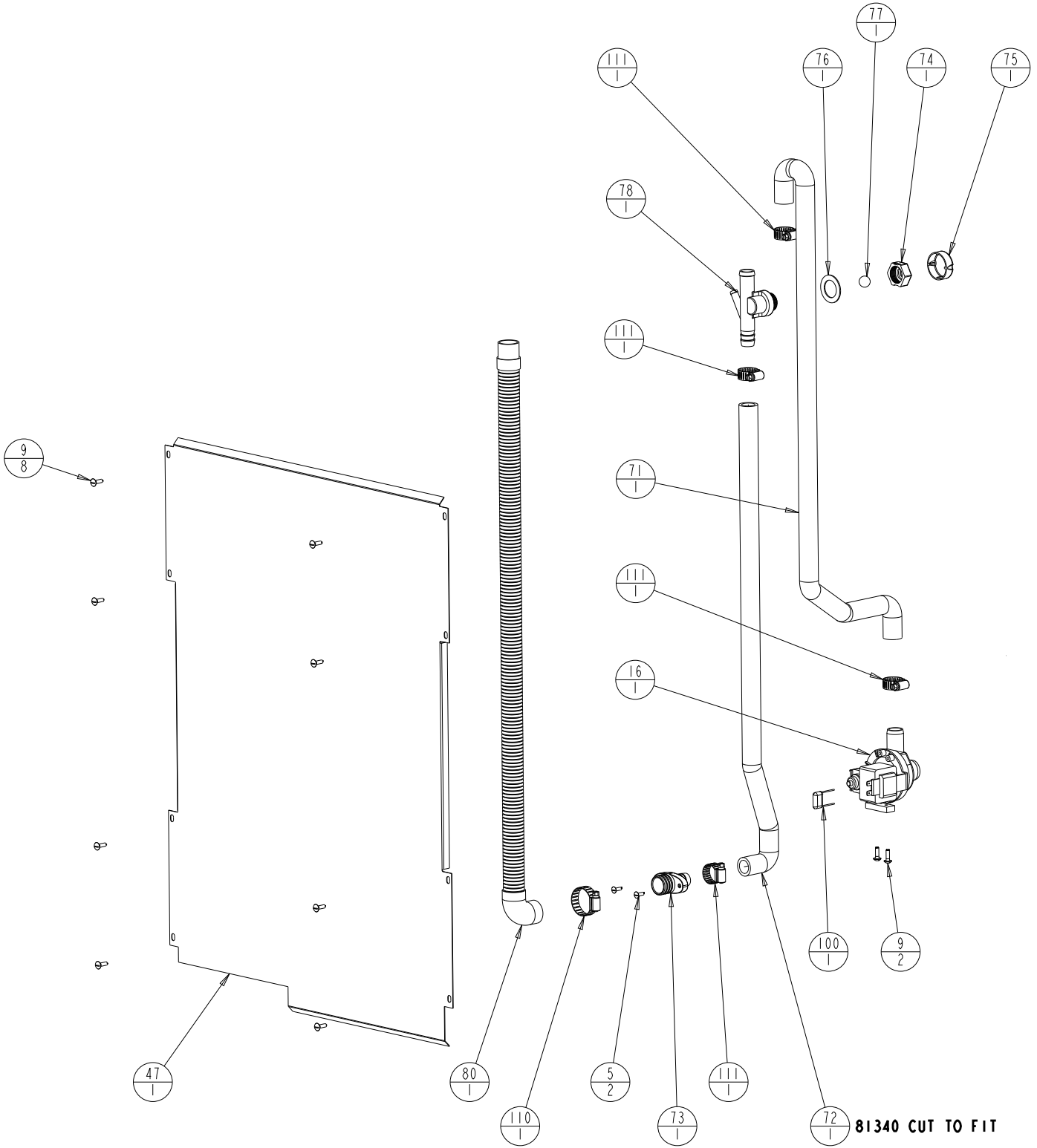
ITEM	PART NUMBER	QTY	DESCRIPTION
1	7007	4	LOCKWASHER, 1/4 S/S
2	7146	4	NUT, HEX HEAD 1/4 - 20
3	7285	16	LOCKWASHER, #10 S/S
4	8132	15	NUT, 10-32 HEX STAINLESS STEEL
5	8143	4	SCREW, 8-32 THREAD
6	8839	5	HEX NUT #10 - 24 STAINLESS STEEL
7	8844	15	WASHER, LOCK #6 S/S
8	8875	15	NUT, HEX 6-32 S/S
9	9561	15	SCREW, 10-32 x 5/8 TRUSS HEAD S/S
10	10310	5	WASHER, #8
11	12022	2	WASHER, 5/16" ID X 3/4" OD 14GA. S/S
12	70864	4	NUT, M3
13	81269	1	PUMP-UL HP HP 0.7 230V 60HZ
14	81270	1	BOARD, DISHWASHER IO REV 1.0
15	81271	1	BOARD, DISH WASHER DISPLAY
16	81272	1	DRAIN PUMP 230VAC/50HZ
17	81273	1	SURFACE FILTER
18	81274	1	HEATING ELEMENT, 1.1/1.2 KW 230/240
19	81275	1	RING NUT PUMP
20	81276	1	O-RING, 95 X 75 X 3
21	81279	1	PUMP SUCTION FILTER
22	81280	1	TURRET FIXING NUT
23	81281	2	GUIDE PIPE
24	81282	1	UPPER S/S WASH ROTOR AXLE AP
25	81283	2	AP SEAL RING
26	81284	1	UNDER S/S WASH ROTOR AXLE
27	81285	1	AP UNDER TURRET S/S WASH ROTOR
28	81286	1	HEATING ELEMENT 6/6.5KW 230/240V
29	81287	1	BOILER
30	81290	2	S/S ROTOR WASH
31	81291	2	TOP/LOWER RINSE COMPLETE
32	81292	1	TOP TURRET
33	81294	1	NUT FOR TOP TURRET FIXING
34	81296	1	O-30 MBAR PRESSURE SWITCH
35	81297	2	AIR TRAP ASSEMBLY
36	81298	1	SUCTION PIPE
37	81299	2	WASH-ARM CUP
38	81300	2	WASH-ARM BUSHING
39	81301	4	BRACKET, BOILER
40	81302	1	O-RING
41	81303	1	RIGHT LOCK FOR DOOR HINGE
42	81304	1	LEFT LOCK FOR DOOR HINGE
43	81305	1	SAFETY THERMOSTAT
44	81306	1	INJECTOR, COMPLETE STAINLESS STEEL
45	81307	1	DOOR ASSEMBLY UC20
46	81309	1	TANK ASSEMBLY UC20
47	81311	1	BACK PANEL UC20
48	81312	1	PANEL, FRONT UC20
49	81314	1	WELDMENT, BASE
50	81315	4	LEVELING LEG
51	81316	1	ELECTRIAL HARNESS UC20
52	81317	1	CONTACTOR 60A/ 600A, COIL 200-240V
53	81318	1	SINGLE SOLENOID VALVE
54	81319	1	OVERLAY UC20
55	81320	1	TOP DELIVERY PIPE EPDM
56	81321	1	LOW DELIVERY PIPE
57	81322	2	O-RING, 14 X 8 1.5 METRIC
58	81323	3	NUT, M8 STAINLESS STEEL
59	81324	2	057 X 43 X 1,5 PLANE O-RING
60	81327	1	INLINE PRESSURE GAUGE
61	81328-A	2	81328 HOSE, 1/2" X 2.5" LONG
62	81328-B	1	81328 HOSE, 1/2" X 55" LONG
63	81328-C	1	81328 HOSE, 1/2" X 15" LONG
64	81328-D	1	81328 HOSE, 1/2" X 18" LONG
65	81331	1	THERMOCOUPLE BOOSTER

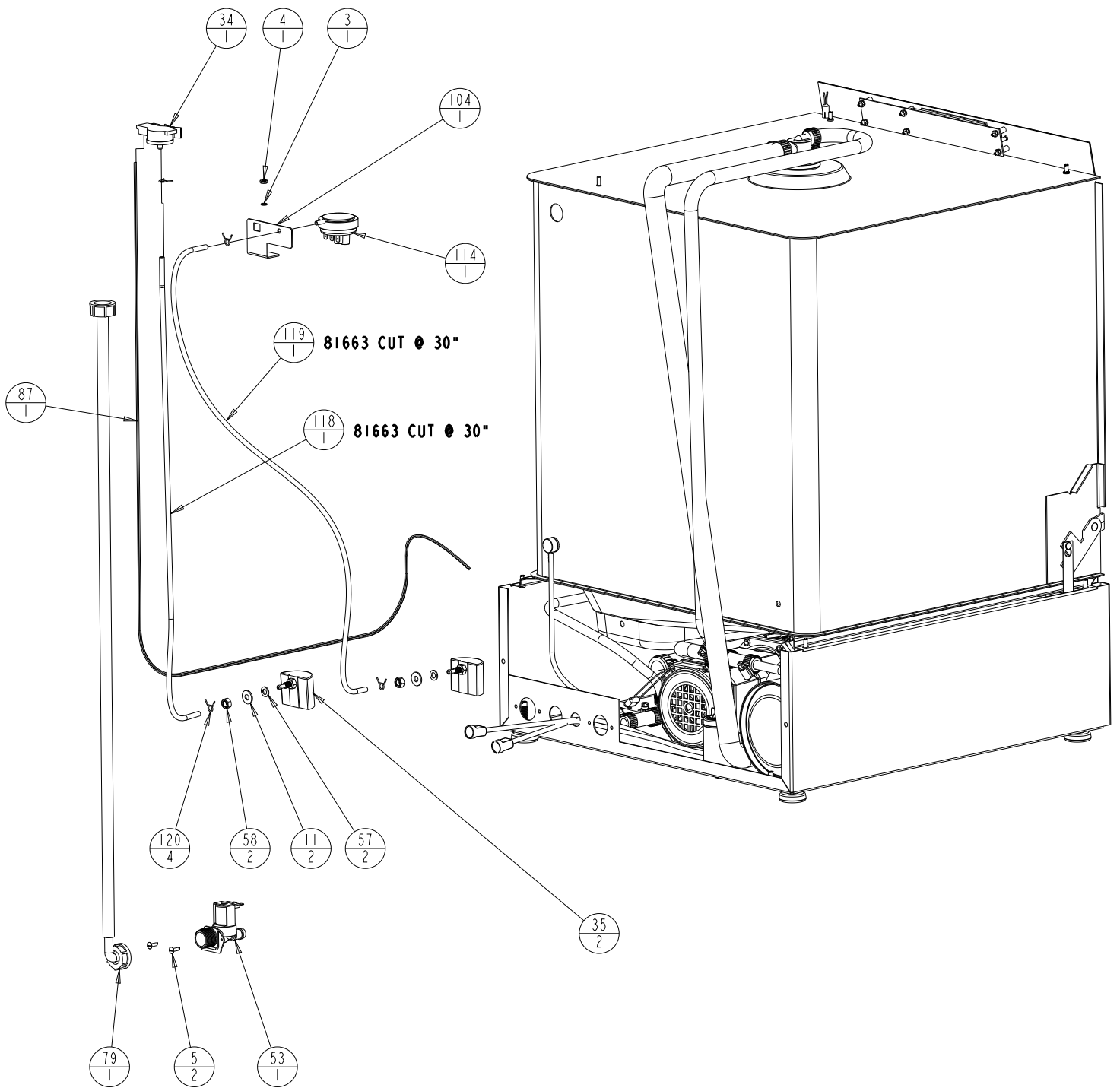
66	81332	1	THERMOCOUPLE SURFACE MOUNT
67	81333	1	TEE, NYLON 1/2 X 1/2 X 1/4
68	81336	1	GERMAC DETERGENT PUMP
69	81337	2	FILTER, SMALL
70	81339	1	TERMINAL BORD 600VAC, 40A
71	81340	1	EPDM DRAIN PIPE
72	81340-A	1	81340 DRAIN PIPE CUT TO FIT
73	81341	1	DISCHARGE PIPE
74	81342	1	NUT, VALVE
75	81343	1	COVER, VALVE
76	81344	1	GASKET, VALVE
77	81345	1	5/8" SPHERE, VALVE
78	81347	1	VELVE BODY CENTER
79	81348	1	WATER HOSE
80	81349	1	DRAIN HOSE
81	81350	1	GERMAC RINSE AID DISPENSER
82	81372	2	BRACKET SPRING
83	81382	1	ASSEMBLY SHELL UC20
84	81383	1	ASSEMBLY ELECTICAL PANEL
85	81388	1	ASSEMBLY, RINSE DETERGENT BRACKET
86	81460	1	HOSE, 1/4"
87	81495	1	LINEAR PRESSURE SWITCH WIRING
88	81496	1	DRAIN PIPE
89	81503	1	INSULATION TANK & DOOR KIT UC20 81329
90	81504	1	INSULATION TANK & DOOR KIT UC20 81329
91	81505	1	INSULATION TANK & DOOR KIT UC20 81329
92	81506	1	INSULATION, BOILER KIT UC20 81288
93	81507	1	INSULATION, BOILER KIT UC20 81288
94	81514	1	RIGHT SCRAP TRAY
95	81533	2	PRECISION MUSIC WIRE EXTENSION SPRING
96	81534-A	1	81534 HOSE, 3/8" X 25" LONG
97	81534-B	1	81534 HOSE, 3/8" X 25" LONG
98	81596	1	INLINE PRESSURE GAUGE
99	81597	1	TEE, NYLON 1/2 X 1/2 X 1/4
100	81605	6	UC20 ELECTRIC SNUBBER
101	81608-A	1	81608 TUBING, CLEAR PLOYURETHANE 39" LONG
102	81608-B	1	81608 TUBING, CLEAR PLOYURETHANE 57" LONG
103	81609	1	81609 TUBING, TRANSLUCENT BLUE 57" LONG
104	81610	1	BRACKET, PRESSURE SWITCH
105	81613	1	CAPLUG
106	81614	1	OVERLAY QUICK START UC20
107	81615	2	NUT, M3
108	81616	1	CLAMP, HOSE SIZE #36
109	81617	1	CLAMP, HOSE SIZE #32
110	81618	6	CLAMP, HOSE SIZE #16
111	81619	5	CLAMP, HOSE SIZE #10
112	81620	10	CLAMP, HOSE SIZE #6
113	81621	6	CLAMP, HOSE SIZE #4
114	81655	1	PRESSURE SWITCH
115	81656-A	2	81656 RUBBER SEAL .594 X .105 X 18" LONG
116	81656-B	1	81656 RUBBER SEAL .594 X .105 X 18" LONG
117	81658	2	PULL, STRAINER
118	81663-A	1	81663 HOSE, 9/32" OD X 5/32" ID X 30" LONG
119	81663-B	1	81663 HOSE, 9/32" OD X 5/32" ID X 30" LONG
120	81664	4	CLAMP, SPRING 1/4
121	81763	4	SCREW, 10 - 32 X .500
122	81767	1	ASSEMBLY, CONTROLLER BRACKET
123	CMSWMAG	1	SWITCH, MAGNETIC SPST 3/8" DIA
124	CMXFMR	1	TRANSFORMER, INPUT 120V OUTPUT 24V

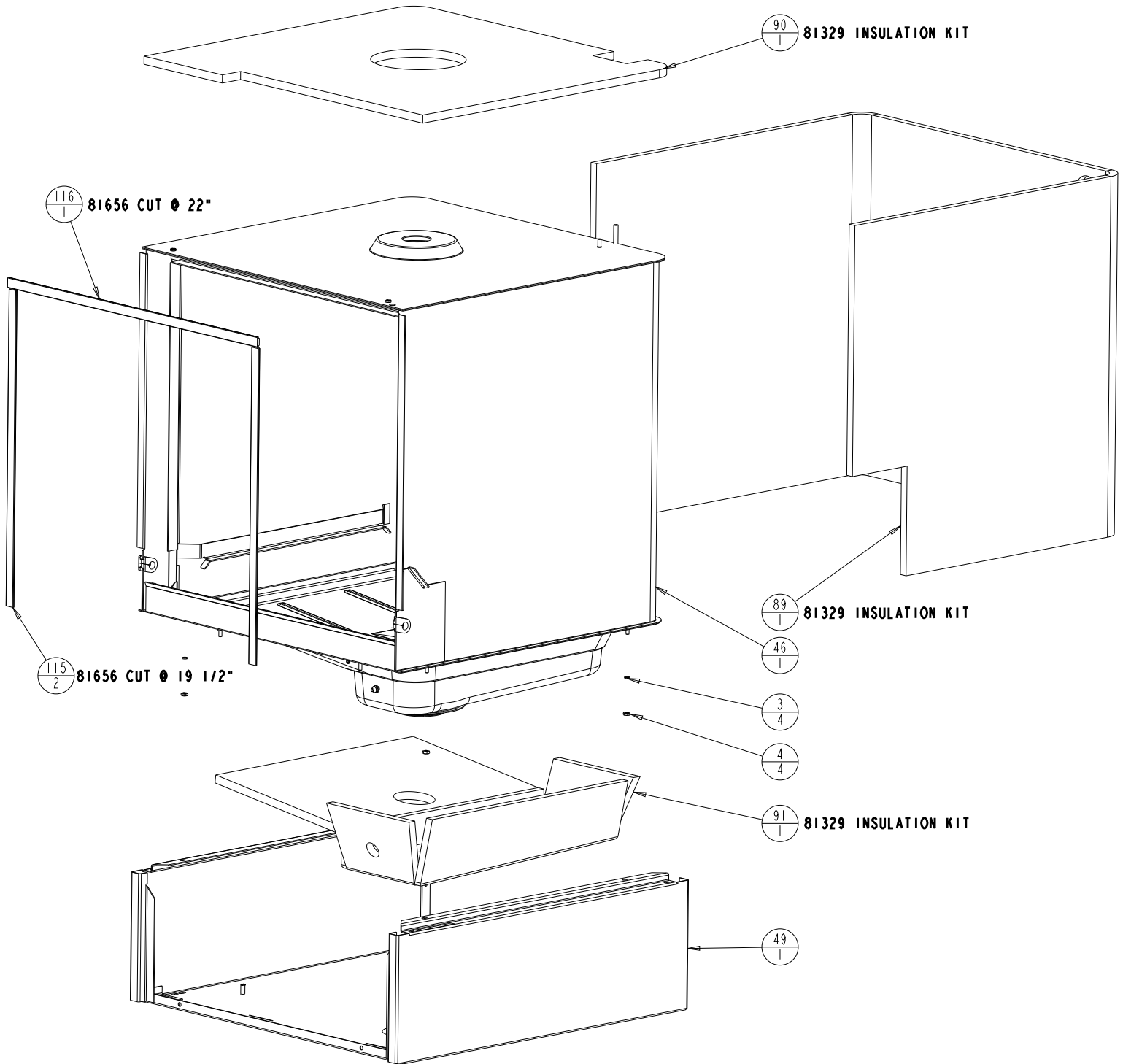


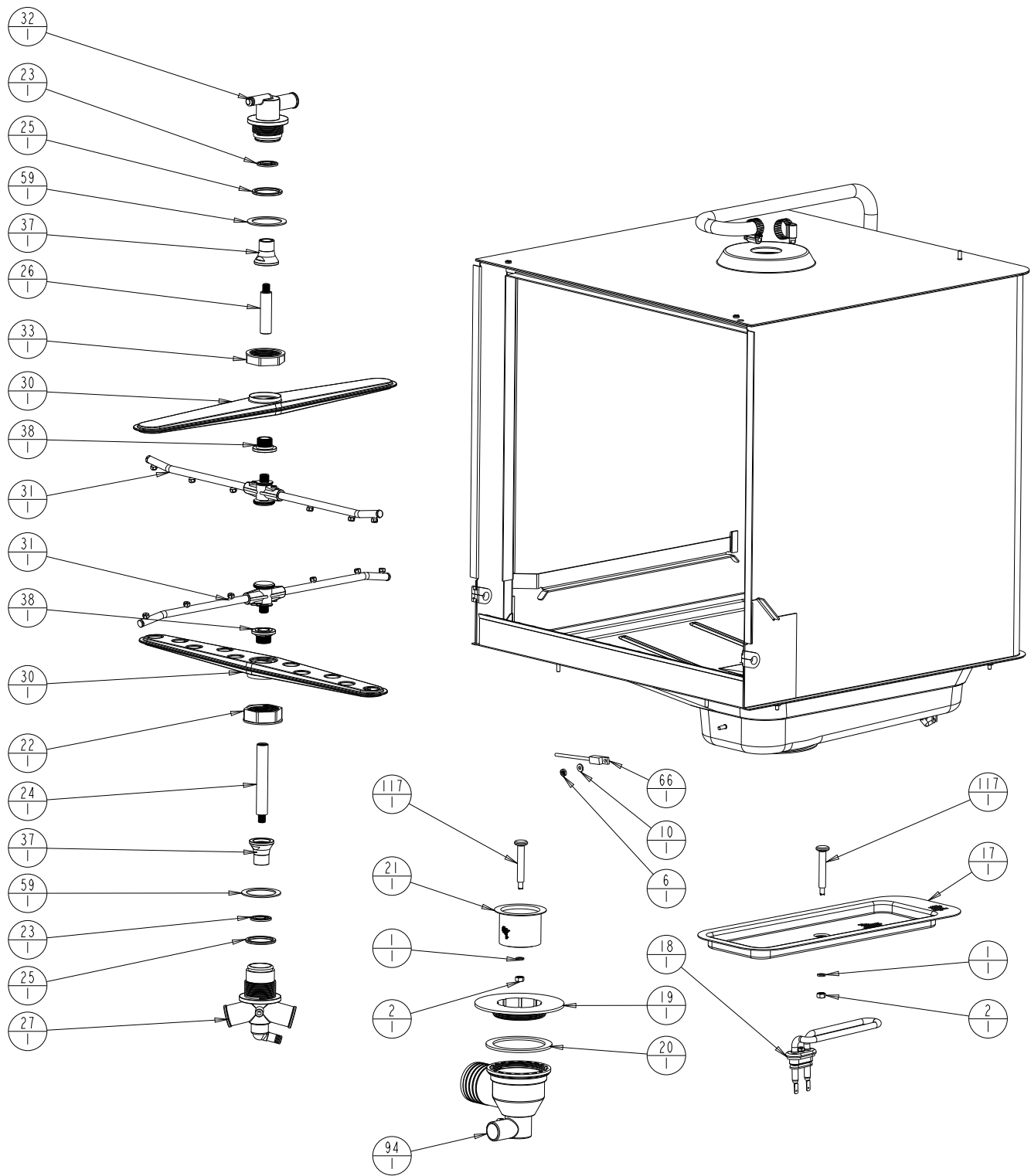


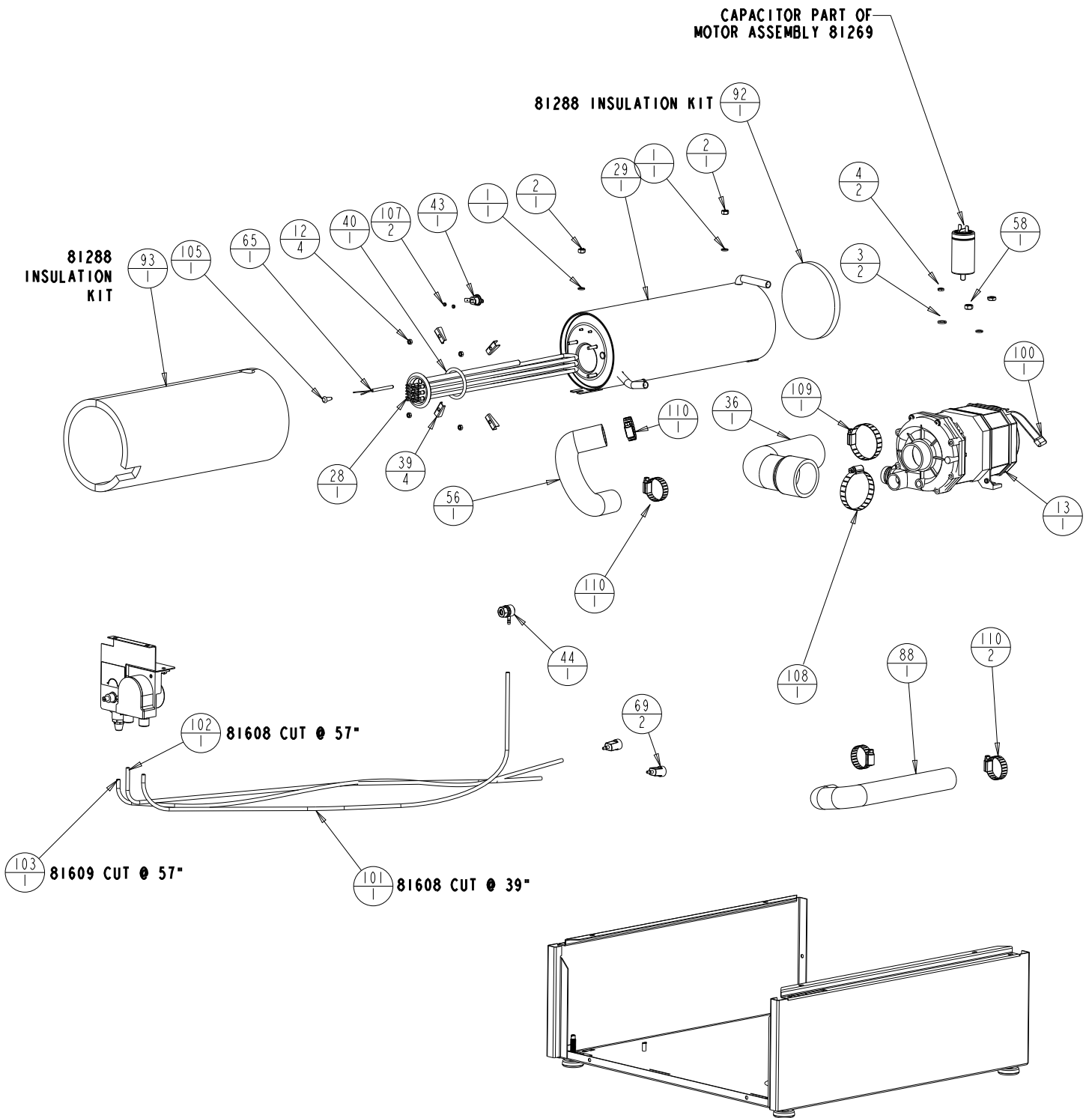


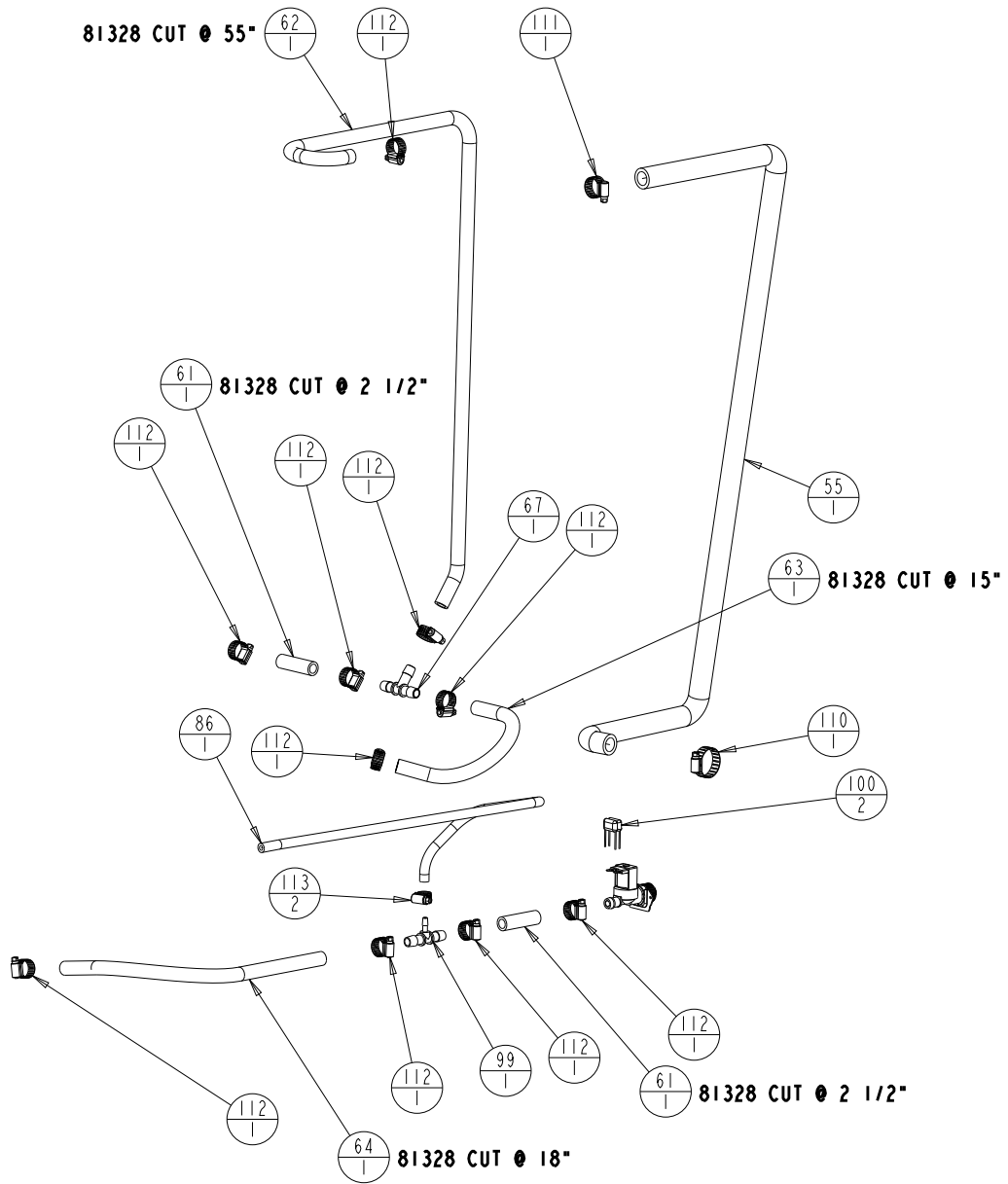














Date of Installation _____
Serial No. _____ Model No. _____

Limited Warranty

Your new Blakeslee dishwashing machine is warranted for one year from date of installation shown above against defective materials and workmanship. If any defects are found within the warranty period; parts, and labor involved with their replacement will be covered free of charge. Service must be performed by a Blakeslee authorized service agency. All labor to be performed during regular working hours. Overtime premium will be charged to the customer. All warranty parts are shipped by surface transportation. If other means of transportation is requested the customer is required to pay the premium. This warranty does not apply to damages resulting from errors in installation on the part of other contractors, nor does it apply to machines which have been subject to accident, misuse, or abuse. It is understood that Blakeslee's warranty obligation with respect to machines located outside of the United States or located in the state of Alaska is limited to the furnishing of replacement parts only. In the state of Hawaii, repair labor is provided free of charge; travel time and expenses paid by the customer. On the island of Oahu, repair labor, travel time and expenses are provided free of charge. This is the entire and only warranty of Blakeslee. We neither assume nor authorize anyone else to assume for us any other obligation or liability in connection with Blakeslee Machines.

In no case can this warranty exceed eighteen (18) months from the date of shipment from our plant at Addison, Illinois

Items NOT Covered Under Warranty

1. Replacing Fuses or resetting Overloads.

Replacing a blown fuse or resetting an open overload breaker is a very simple procedure and is the owner's responsibility. If the machine continues to blow fuses or open the overload breaker, contact your nearest authorized Blakeslee Service Center.

2. Adjusting Tank Heats.

Heat adjustments are covered in The Owners Manual and must be adjusted depending upon desired results.

3. Proper Loading of Dishes.

It is important that the machine owner's personnel observe the instructions outlined in The Owners Manual.

4. Cleaning Drain Valves.

Foreign articles lodged in the drain valve seat should be removed as a part of the normal daily cleaning.

5. Cleaning Rinse or Wash Nozzles and Line Strainers.

Keeping a dishwasher clean and removing obstructions from the nozzles and line strainers will be a periodic function of the machine owner's personnel. The cleaning periods will vary depending upon impurities in the water supply and cleanliness of the washing operation.

6. Final Rinse Water.

Most frequent of all complaints in any dishwashing machine is that of poor final rinse. It is the responsibility of the owner to provide 180 to 195 degree (plus) water at 20-25 lb. flow pressure through clean unobstructed water lines. If the machine has a factory equipped final rinse water booster, the owner must supply the booster with a minimum of 140 degree temperature water.



MADE IN USA
PROTECT YOUR EQUIPMENT
USE GENUINE BLAKESLEE PARTS