

BLAKESLEE

Division of Blako Inc.

OWNERS MANUAL

GLASSWASHER MODEL G-2000-F



1844 South Laramie Avenue
Chicago, IL 60804
Phone (708) 656-0660
Fax (708) 656-0017

www.blakesleeinc.com
service@blakesleeinc.com

1149 Bellamy Road North Unit 19
Scarborough, Ontario Canada M1H1H7
Phone (416) 751-2625
Fax (416) 751-8539

INDEX

	PAGE NO.
SPECIFICATIONS	1
SECTION I OPERATION	2
SECTION II DAILY CHECK-OUT	3
SECTION III CLEANING	4
SECTION IV TROUBLE SHOOTING	5
SECTION V PARTS ILLUSTRATIONS	7
WIRING DIAGRAM	16
CLEANING TOOL	18
WARRANTY	19

GLASSWASHER

MODEL G-2000-F

SPECIFICATIONS

Electrical:

Volts	Phase	Load AMPS
220	1	15

Water Requirements (100%)

Hot Inlet Temperature	140°F
Cold Inlet Temperature	75°
Inlet Pressure	20 psi
Inlet Size	1/2" Hose
Drain Size (gravity)	1-1/2" OD
Water Consumption	2.8 gpm
Initial Fill	3 gallons

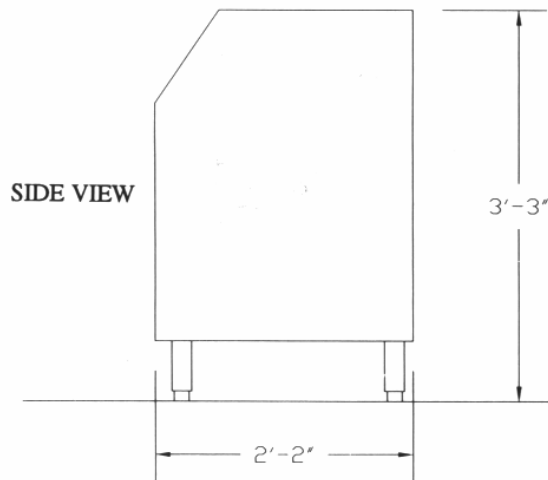
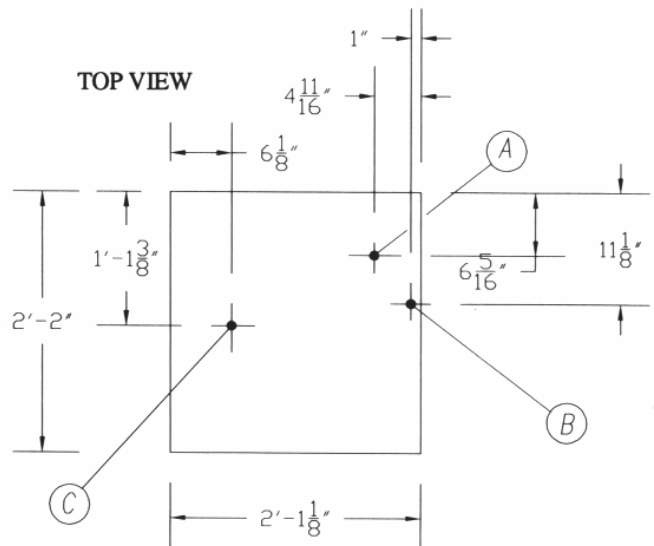
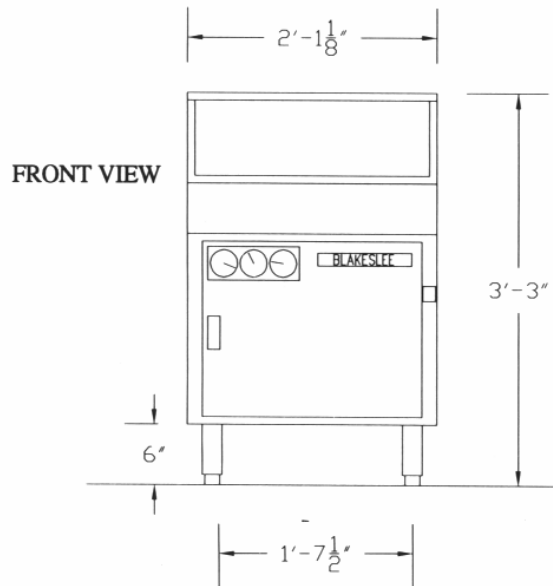
OUTSTANDING FEATURES

CAPACITY: 1000 Glasses Per Hour

OPERATING CYCLE: Total Cycle Time - 3 Minutes.

CONTROLS: On/Off Switch located on front of machine.

SUPERIOR WASH AND RINSE: Top and bottom spray arms.



- (A) HOT WATER CONNECTION (1/2" N.P.T. FEMALE FITTING)
- (B) COLD WATER CONNECTION (1/2" N.P.T. FEMALE FITTING)
- (C) 1-1/2" O.D. DRAIN

NOTE: If your water pressure is over 25 psi; installation of a pressure reducing valve is necessary.

It is recommended that check valves be installed in both incoming water supplies.

APPROXIMATE SHIPPING INFORMATION			
MODEL	DIMENSIONS	WEIGHT	CUBE
G-2000-F	47" x X27" X 28.5	160 lbs.	21.0 Ft.

All Blakeslee dishwashers are designed to be in compliance with NSF, UL, CSA, and ASSE standards.

SPECIFICATIONS SUBJECT TO CHANGE WITHOUT NOTICE.

SECTION I OPERATION

1-1 Water

The wash tank is equipped with a float assembly that turns water off when proper level is achieved.

The water temperature is controlled by a heater and a thermostat. The thermostat should be set to provide a wash water temperature between 145° F /60° C and 160° F /71° C.

1-2 Filling Wash Tank

Ensure that the standpipe is in place. Put the toggle switch in the "AUTO" position. This will also turn the heater on. To start the conveyor and detergent pump, put the main switch on the front of the machine in the "ON" position.

Detergent is fed from the supply container into the detergent tank in controlled amounts by the detergent pump. Use detergent at strength of 0.35% or as recommended by your chemical supplier to accomplish the necessary cleaning job.

NOTE: Use a heavy-duty NON-CHLORINATED liquid detergent manufactured specifically for glassware washing machines.

Your chemical representative will test the solution to insure the proper strength is recommended.

NOTE: Many of the detergents used in glass and dishwashers are harmful to the skin in their concentrated form. To prevent accidental exposure to this danger, be sure all hoses are secure and clamped after service to machine.

1-3 Chemical Settings

Approximate chemical settings can be obtained by counting the revolutions of the injector rotors.

For detergent, one revolution per second equals approximately .035% concentration.

For sanitizer, one revolution in 5 seconds equals approximately .035% concentration

For rinse agent, one revolution in 8 seconds is suggested.

1-4 Detergent Injector Adjustment

1. Install the detergent tank standpipe and switch tank fill toggle switch to "AUTO" position. The detergent feeder will now feed detergent into the detergent tank with water fill.

2. To increase detergent volume, turn the detergent adjustment screw clockwise.

3. To decrease detergent volume, turn the detergent adjustment screw counter-clockwise.

1-4 Sanitizer Injector Adjustment

The sanitizer is automatically fed into the line through the sanitizer injector. Injection is into the final rinse sprays.

1. When a new sanitizer container is installed, push the prime button in and hold until sanitizer feed tubes are full.

2. Start the washer—take a sample from the final rinse spray tubes.

3. To increase sanitizer volume, turn the detergent adjustment screw clockwise.

4. To decrease sanitizer volume, turn the detergent adjustment screw counter-clockwise.

NOTE: If iodophor is being used as a sanitizer, it is not necessary to use a separate rinse agent. To turn the rinse agent injector "OFF" in this case, turn the adjustment screw counter-clockwise until the rotor stops turning.

NOTE: If chlorine is being used, a separate rinse agent is required to prevent spotting.

1-5 Rinse Agent Injector Adjustment

1. When a new rinse agent container is installed, push the prime button in and hold until sanitizer feed tubes are full.

2. Start the washer—take a sample from the final rinse spray tubes.

3. To increase rinse agent volume, turn the detergent adjustment screw clockwise.

4. To decrease rinse agent volume, turn the detergent adjustment screw counter-clockwise.

NOTE: The above only allows for testing the sanitizer being fed. Actual sanitizing rinse solution should be tested by your chemical supplier representative.

NOTE: To meet the requirement of N.S.F. standards, iodophor in a concentration of 12.5 p.p.m. of chlorine at 50 p.p.m. must be used in the final rinse.

SECTION II DAILY CHECK-OUT

1. Clean machine. (See cleaning instructions on next page.)
2. Drain deflector is in position in drain.
3. Splash curtain is in position.
4. Right and left-hand trays are in position
5. Wash return screen for wash water is clean and in place.
6. Standpipe in the detergent tank is in place.
7. Bottom drain screen is in position.
8. Ensure that the mixing valve is adjusted.
9. Place the fill valve switch in "AUTO" position.
10. Wait for the detergent tank to reach the desired temperature.
(145° F /60° C and 160° F /71° C.)
11. Check the detergent, sanitizer, and rinse agent supply.
12. Switch the Glasswasher on.

SECTION III CLEANING

Daily Cleaning Instructions:

1. Run glassware through the machine, and then clear the conveyor of glassware.
2. Turn the machine off.
3. Remove right and left-hand trays and splash curtain. Wash with hot soapy water, rinse thoroughly, and then dry.
4. Remove the conveyor as follows:
 - Remove sleeve in center of conveyor.
 - Lift back of conveyor until it is free of drive gear.
 - Raise front of conveyor and remove from wash section.
5. Remove drain deflector screens. Clean, wash and rinse areas with hot soapy water, rinse thoroughly, then dry.
6. Replace drain deflector screens, conveyor, right and left-hand trays, and splash curtain. Ensure conveyor is level and engaged with drive gear.
7. Turn auto fill switch to “OFF” position.
8. Remove wash return screen from below detergent tank. Clean and replace.
9. Turn fill switch to “AUTO” position.
10. Ensure there is product in the detergent, sanitizer, and rinse agent containers.
11. Check the detergent, sanitizer and rinse agent feed lines to ensure they are in place and securely clamped.

SECTION IV TROUBLE SHOOTING

Trouble shooting procedures are listed in the following table. Each trouble is followed by a list of possible causes and suggested procedures to correct the cause.
In general, the procedures should be performed in the order in which they are listed.

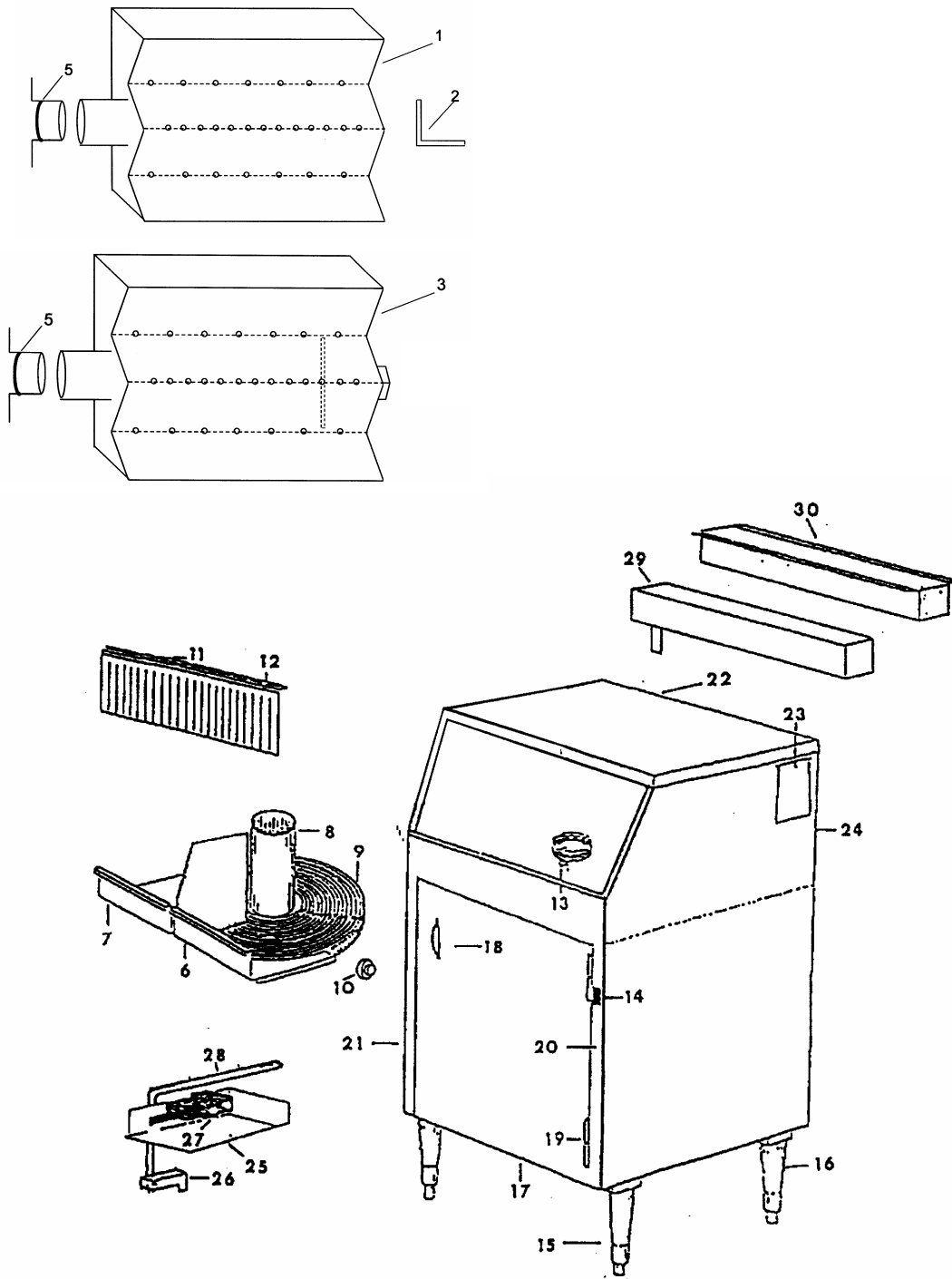
Trouble	Possible Cause	Corrective Procedure
1. Conveyor does not turn		
	No power	Check the fuse on panel.
	Drive motor burnt out	Replace motor
	Obstruction in wash or rinse section	Remove the obstruction
	Table limit switch not making contact or faulty	Adjust micro-switch or replace if faulty
	Conveyor not in position	Position properly
2. Overspray from hood section		
	Splash curtain not in position	Reinstall splash curtain
	Washer running without any glasses on conveyor	Load conveyor with glasses
	Spray boxes plugged	Clean thoroughly, use jet reamer provided
3. Chemical containers filling with water		
	Dirty rinse spray box	Refer to cleaning section
	Element tube stretched; pinhole in tubing; loose hose ties	Replace tubing
	Worn flow washer in solenoid valve	Replace flow washer
4. Lack of pressure at wash spray tubes		
	No water in detergent tank	a. Make sure stand pipe is in place in tank b. Check that the fill switch is in "AUTO" position and that tank fills c. Make sure that the float switch is operating d. Check that the fill solenoid is operating
	Pump not operating	a. Check power supply to machine b. Check pump capacitor, replace if necessary c. Replace pump if necessary
	Pump defective	a. Replace pump impeller if not working correctly b. Check for voltage drop
	Wash spray box dirty	Clean thoroughly, use jet reamer provided
	Supply line plugged	Clear line of cause
5. Lack of pressure in spray boxes		
	Shut-off valve on supply line closed	Open valve
	Low water pressure	Have pressure taken on main cold water line to machine. Pressure must be 25 p.s.i.
	Rinse solenoid will not operate	Replace coil if necessary
	Rinse solenoid strainer plugged	Clean or replace
	Spray boxes plugged	Clean thoroughly, use jet reamer provided
	Supply line plugged	Clear line of cause
6. Continual flow of water through detergent tank or spray boxes with machine off		
	Solenoid valve not seating	a. Turn off water supply b. Take apart and clean thoroughly c. If above does not cure, replace plunger and seat

7. Hot water below required temperature in detergent tank		
	Thermostat set too low	Increase temperature by turning thermostat clockwise
	Heater not on	Check for power from switch to thermostat replace switch if necessary
	Heater burned out	Replace heater, Check float to insure heater is exposed when operating
	Thermostat defective	Replace thermostat
	Incoming water too cold	Incoming water should be at 145° F /63° C minimum at supply for wash temperature. Check supply
		Rinse temperature should be a minimum of 75° F. /24° C. To increase rinse temperature, open mixing valve on inlet plumbing
8. Water on floor		
	Pump seal leaking	Replace pump
	Rinse drain in wash chamber plugged	Clear obstruction, clean machine
	Wash drain in wash chamber plugged	Clear obstruction, clean machine
	Wash return screen in detergent tank plugged	Clean screen
	Drain screen under detergent tank plugged	Clean screen
	Main drain plugged	Clean drain
10. Sanitizer not feeding		
	No sanitizer in the container	Refill the container
	Sanitizer crystallized or turned to gel, plugging lines	Clean feed lines and sanitizer feeder, flush with hot water. Use a fresh supply of sanitizer
	Strainer at end of feed line in container plugged	Remove feed line from container and clean strainer
	Sanitizer pump defective	Replace pump
	No sanitizer being fed	Chemical adjustment set to low. Turn screw clockwise to increase rate of feed
	Adjustment screw does not affect feed rate	Replace chemical injector control board
11. Rinse agent not feeding		
	No rinse agent in the container	Refill the container
	Rinse agent crystallized or turned to gel, plugging lines	Clean feed lines and rinse agent feeder, flush with hot water. Use a fresh supply of sanitizer
	Strainer at end of feed line in container plugged	Remove feed line from container and clean strainer
	Sanitizer pump defective	Replace pump
	No sanitizer being fed	Chemical adjustment set to low/ Turn screw clockwise to increase rate of feed
	Adjustment screw does not affect feed rate	Replace chemical injector control board



PROTECT YOUR EQUIPMENT

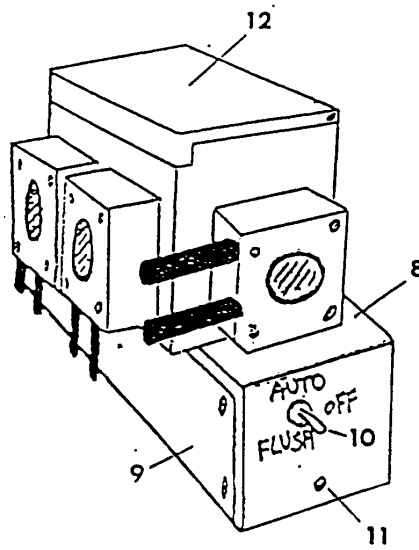
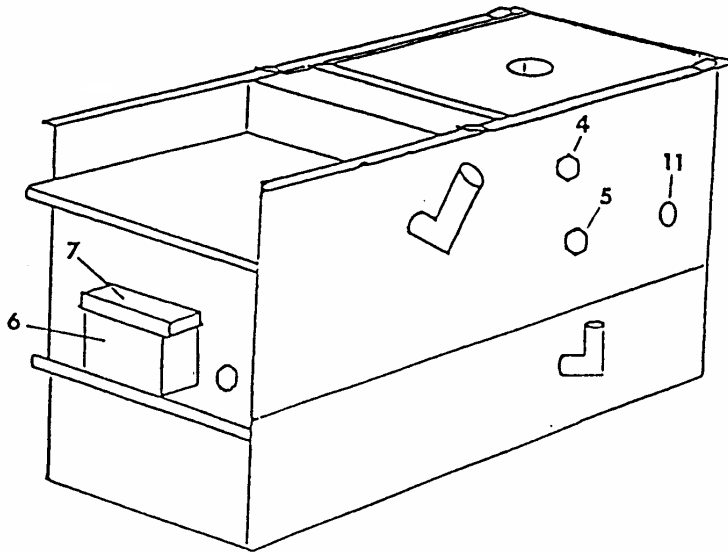
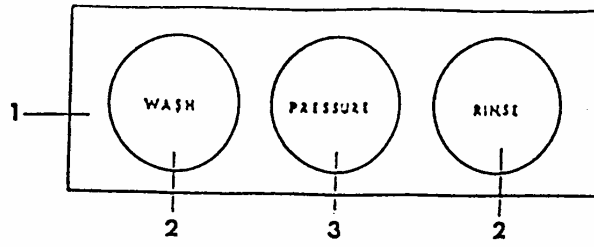
USE GENUINE **BLAKESLEE** PARTS



MAIN ASSEMBLY

MAIN ASSEMBLY

ITEM NO.	PART NO.	DESCRIPTION	QTY REQ
1	76973	UPPER SPRAY BOX	2
2	77019	UPPER SPRAY BOX BRACKET	2
3	76962	LOWER SPRAY BOX	4
4		No Longer Used	
5	76152	O-RING	1
6	75953	TRAY-R.H.	1
7	75954	TRAY-L.H.	1
8	75967	CENTER COLUMN	1
9	76066	TURNTABLE WELDMENT	1
10	76000	ROLLER ASSEMBLY	4
11	76035	CURTAIN	1
12	76155	CURTAIN ROD	1
13	76156	DEFLECTOR SCREEN	2
14	76027	MAIN SWITCH	1
15	75937	LEG WELDMENT ASS'Y.-FRONT	1
16	75938	LEG WELDMENT ASS'Y.-REAR	1
17	75919	DOOR	1
18	76023	DOOR HANDLE	1
*	76024	MAGNETIC CATH	1
19	76026	S/S SLIP HINGE	2
20	75944	SIDE PANEL-R.H.	1
21	75945	SIDE PANEL-L.H.	1
22	75940	TOP COVER	1
23	75964	VACUUM BREAKER ACCESS COVER	1
24	75939	BACK PANEL	1
25	75965	SWITCH MOUNTING BRACKET	1
26	75972	SWITCH ACTUATOR	1
27	76467	MICRO SWITCH	1
28	75973	STOP ARM	1
29	75982	WASTE BOX	1
30	75983	WASTE TRAY	1



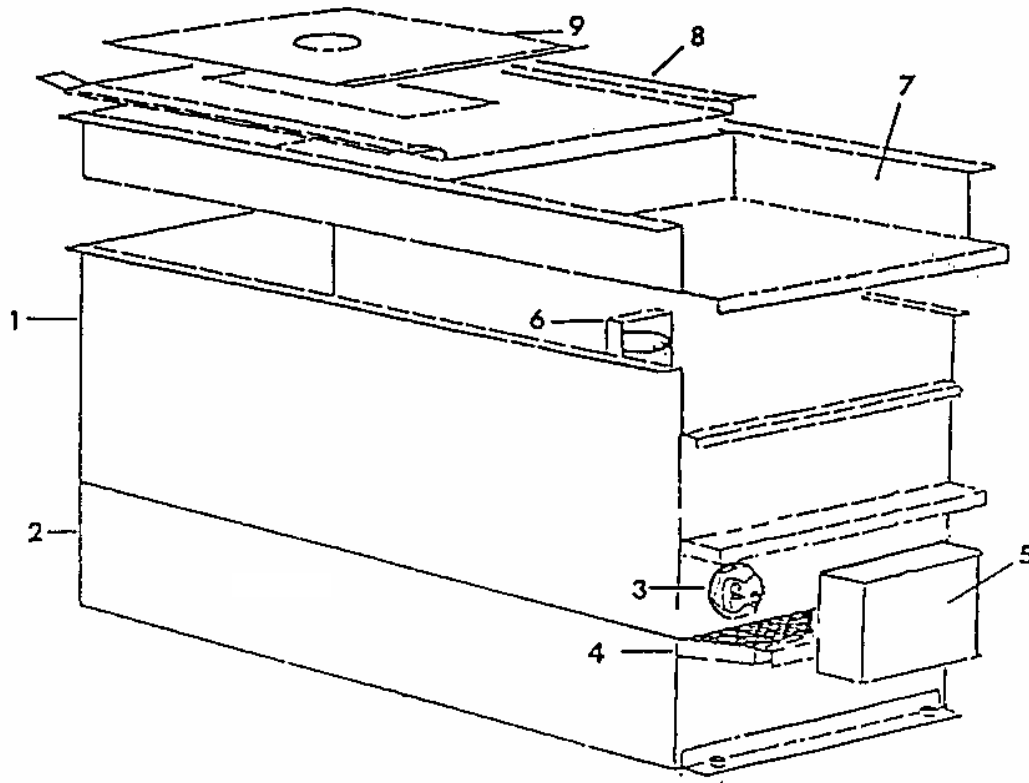
GAUGES, SENSORS AND DETERGENT PUMP

GAUGES, SENSORS AND DETERGENT PUMP

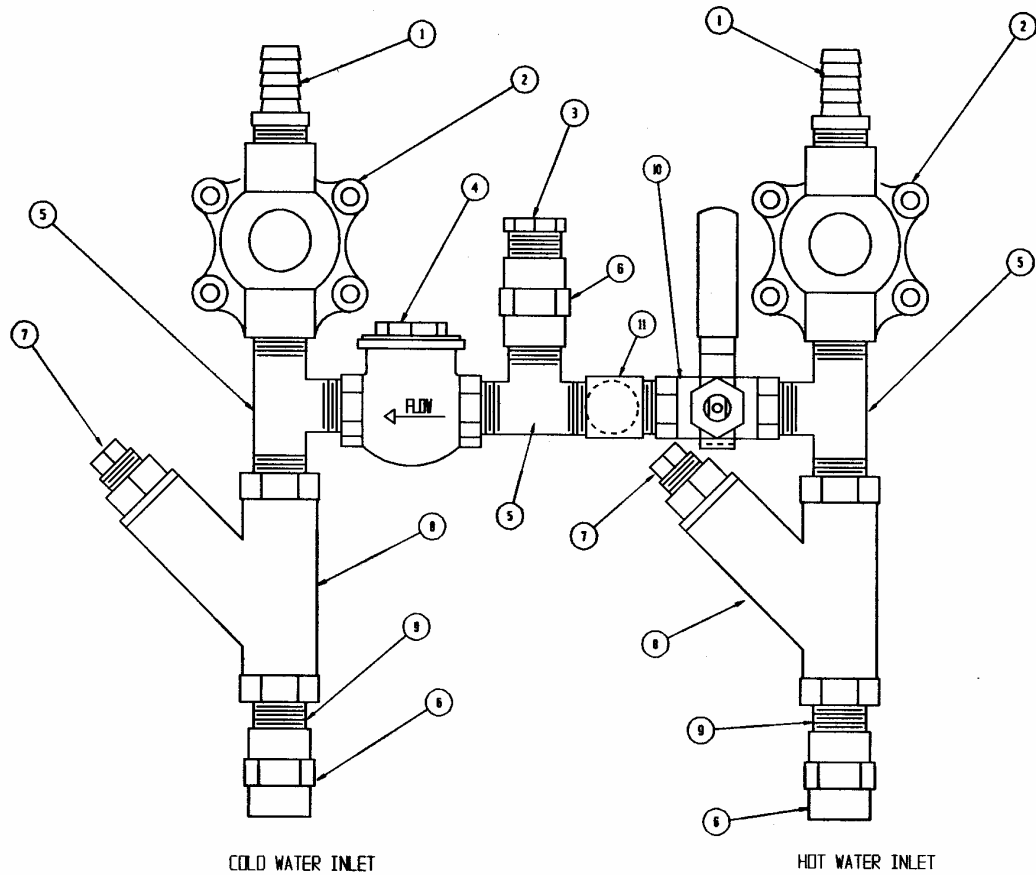
ITEM NO.	PART NO.	DESCRIPTION	QTY REQ
1	75920	GUAGE MOUNTING PLATE	1
2	70155	THERMOMETER	2
3	70156	PRESSURE GAUGE	1
4	18865	FLOAT SWITCH	1
5	76040	PROBE	1
6	75960	HEATING ELEMENT COVER	1
7	97990	HEATING ELEMENT COVER-TOP	1
8	75912	CONTROL BOX	1
9	75917	CONTROL BOX COVER	1
10	76037	TOGGLE SWITCH	1
11	07768	THERMOSTAT	1
12	76029	DETERGENT PUMP	1

NOT SHOWN

98849 TUBING 64" LENGTH

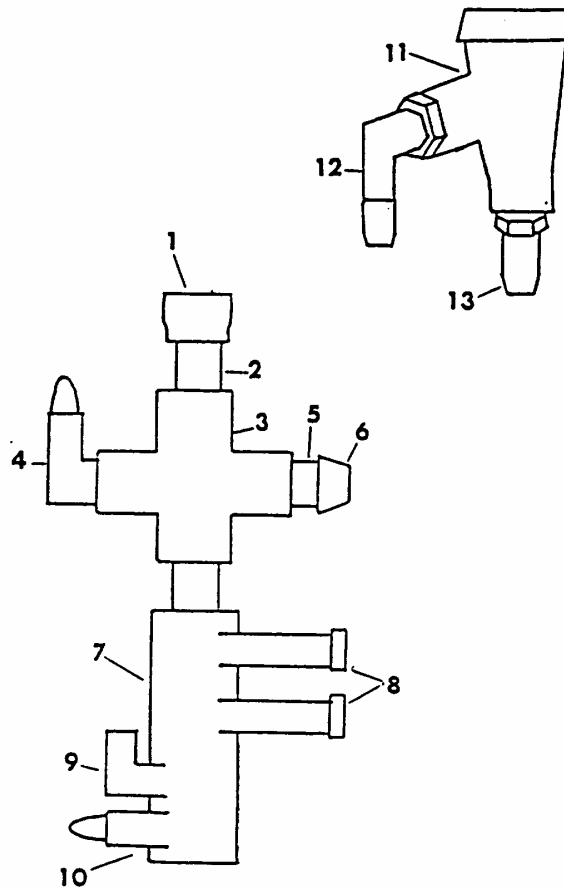


ITEM NO.	PART NO.	DESCRIPTION	QTY REQ
1	75986	DETERGENT TANK	1
2	75955	DRAIN TANK WELDMENT	1
3	76031	HEATING ELEMENT	1
4	76819	LOWER SCRAP TRAY	1
5	75960	HEATING ELEMENT COVER	1
6	75927	STAND PIPE	1
7	76822	UPPER SCRAP TRAY	1
8	75952	DETERGENT TANK FRONT COVER	1
9	75950	DETERGENT TANK REAR COVER	1



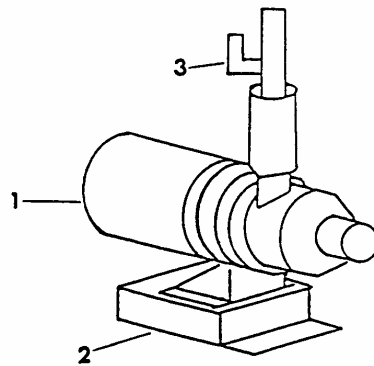
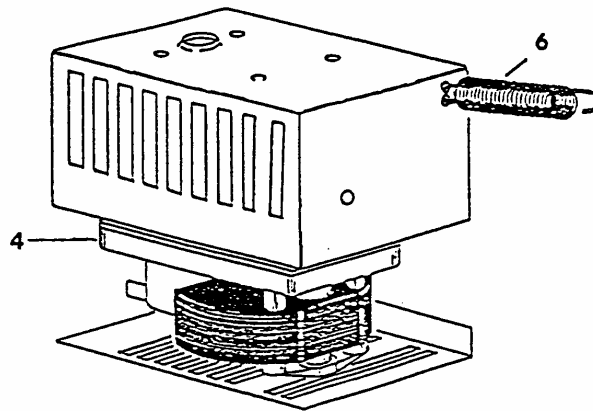
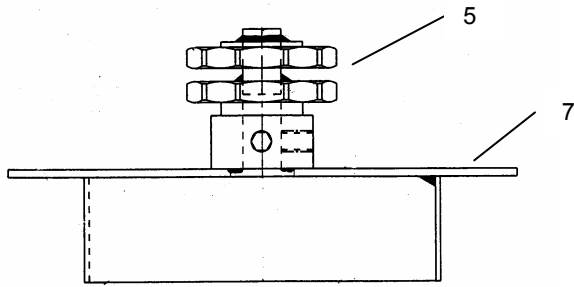
WASH / RINSE FILL PLUMBING ARRANGMENT

ITEM NO	PART NO.	DESCRIPTION	QTY REQ
1	70286	3/8 Pipe To 1/2 Hose	2
2	76033	3/8 Solenoid	2
3	18528	1/2 Pipe Plug	1
4	76055	3/8 Check Valve	1
5	76044	3/8 Male Tee	3
6	76041	3/8 X 1/2 Reducer Coupling	3
7	71312	3/8 Pipe Plug	1
8	76053	3/8 Line Strainer	2
9	70395	3/8 Close Nipple	2
10	76054	3/8 Ball Valve	1
11	70205	3/8 x 90 Elbow	1



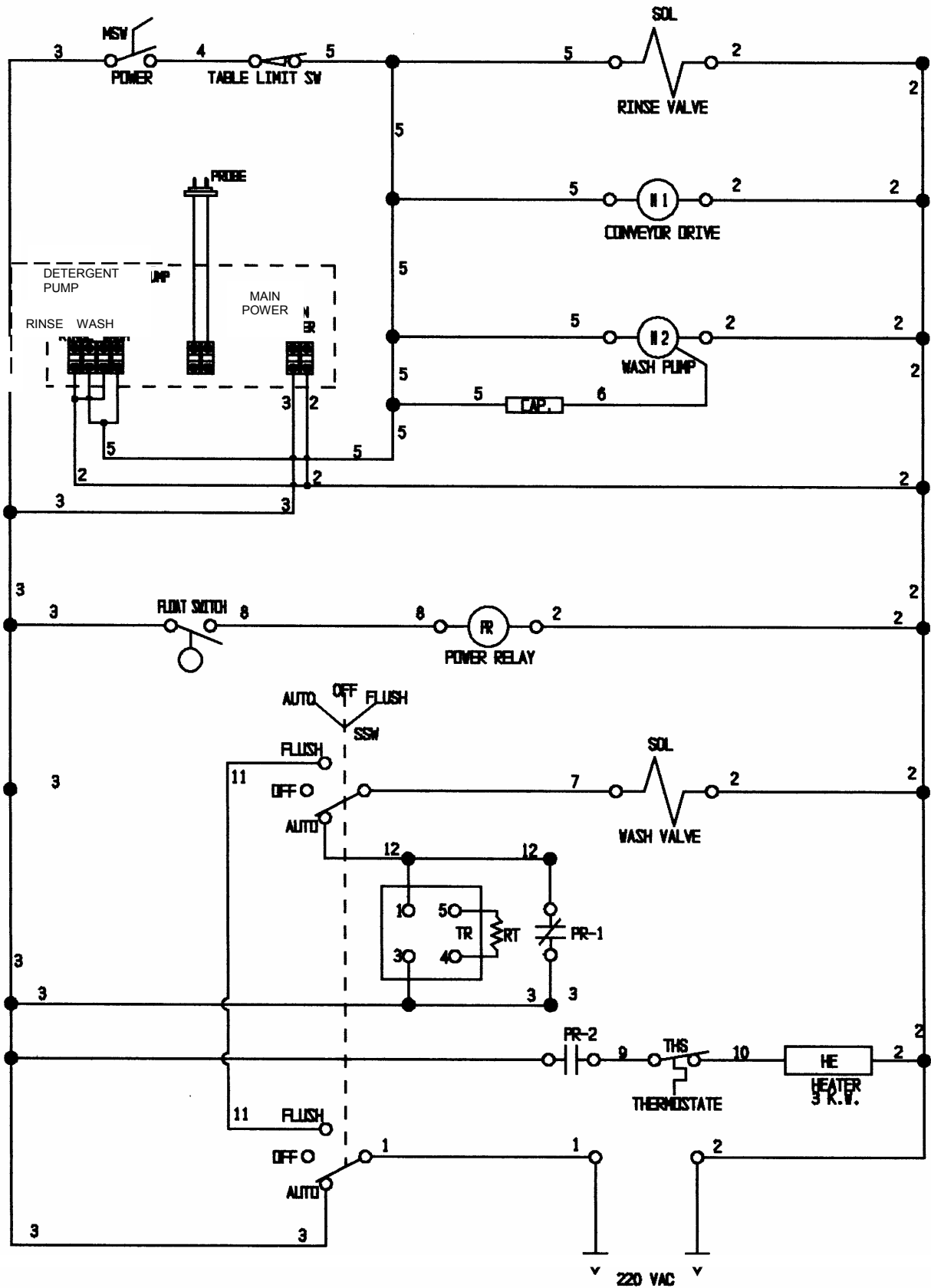
CHEMICAL INJECTOR PLUMBING

ITEM NO	PART NO.	DESCRIPTION	QTY REQ
			1
1	76052	1/2"-3/8" BELL REDUCER COUPLING	1
2	70395	3/8" CLOSE NIPPLE	1
3	76048	3/8" CROSS	1
4	76045	90° ELBOW 3/8" MALE to 1/4" TUBE	1
5	72631	BRASS MALE CONNECTOR 3/8" MALE to 1/4" TUBE	1
6	72561	1/4" FLARED NUT	1
7	760006	MIXING ADAPTOR	1
8	76039	INJECTOR KIT	1
9	76049	90° ELBOW 1/4" MALE PIPE to 3/8" HOSE BARB	1
10	76050	BRASS COUPLER 1/4" MALE PIPE to 1/2" HOSE BARB	1
11	70201	3/8" VACUUM BREAKER	1
12	76041	1/2"-3/8" BRASS REDUCER COUPLING	1
13	76046	3/8" MALE PIPE to 1/2" HOSE BARB	1



WASH PUMP AND DRIVE

ITEM NO	PART NO.	DESCRIPTION	QTY REQ
1	76030	WASH PUMP	1
2	75970	PUMP MOUNTING BRACKET	1
3	76049	90° ELBOW 1/4" MALE PIPE TO 3/8" HOSE BARB	1
4	76032	DRIVE MOTOR	1
5	76927	DRIVE SPROCKET	1
6	76034	SPRING	1
7	77510	MOTOR COVER	1



WIRING DIAGRAM

WIRING DIAGRAM PARTS LIST

SYM	PART NO.	DESCRIPTION	QTY
DP	76029	Detergent Pump	1
TR	76537	Solid State Timer	1
FLO.	18865	Float Switch	1
PR	75292	Power Relay	1
M2	76030	Wash Pump	1
M1	76032	Drive Motor	1
SW	76467	Limit Switch	1
SOL	76033	Solenoid Valve	2
MSW	76027	Rocket Switch	1
SSW	20833	Toggle Switch	1
THS	07768	Thermostat	1
HE	76031	Heater	1
CAP	76038	Capacitor	1
RT	76913	Resistor	1



CLEANING TOOL

PART NO.	DESCRIPTION	QTY REQ
76159	JET REAMER	1



USA

Date of Installation _____

Serial No. _____ Model No. _____

Limited Warranty

Your new Blakeslee Glasswasher is warranted for one year from date of installation shown above against defective materials and workmanship. If any defects are found within the warranty period; parts, and labor involved with their replacement will be covered free of charge. Service must be performed by a Blakeslee authorized service agency. All labor to be performed during regular working hours. Overtime premium will be charged to the customer. All warranty parts are shipped by surface transportation. If other means of transportation is requested the customer is required to pay the premium. This warranty does not apply to damages resulting from errors in installation on the part of other contractors, nor does it apply to machines which have been subject to accident, misuse, or abuse. It is understood that Blakeslee's warranty obligation with respect to machines located outside of the United States or located in the state of Alaska is limited to the furnishing of replacement parts only. In the state of Hawaii, repair labor is provided free of charge; travel time and expenses paid by the customer. On the island of Oahu, repair labor, travel time and expenses are provided free of charge. This is the entire and only warranty of Blakeslee. We neither assume nor authorize anyone else to assume for us any other obligation or liability in connection with Blakeslee Machines.

- In no case can this warranty exceed eighteen (18) months from the date of shipment from our plant at Chicago, Illinois



CANADA

Date of Installation _____

Serial No. _____ Model No. _____

Limited Warranty

Your new BLAKESLEE Glasswasher is warranted for one year from the date of installation shown above* against defective materials and workmanship. If any defects are found within the warranty period; parts, and labor involved with their replacement will be covered free of charge. Service must be performed by a Blakeslee authorized service agency. All labor to be performed during regular working hours. Overtime premium will be charged to the customer. Travel time and distance to perform repairs over 100 Km. from the nearest authorized service agency will be charged to the customer. All warranty parts are shipped by surface transportation. If other means of transportation is requested the customer is required to pay the premium. This warranty does not apply to damages resulting from errors in installation on the part of other contractors, nor does it apply to machines which have been subject to accident, misuse, or abuse. This is the entire and only warranty of Blakeslee. We neither assume nor authorize anyone else to assume for us any other obligation or liability in connection with Blakeslee Machines. It is understood that BLAKESLEE'S guarantee obligation with respect to machines located outside of Canada is limited to furnishing of replacement parts only.

- In no case can this warranty exceed eighteen (18) months from the date of shipment from our plant at Scarborough, Ontario.