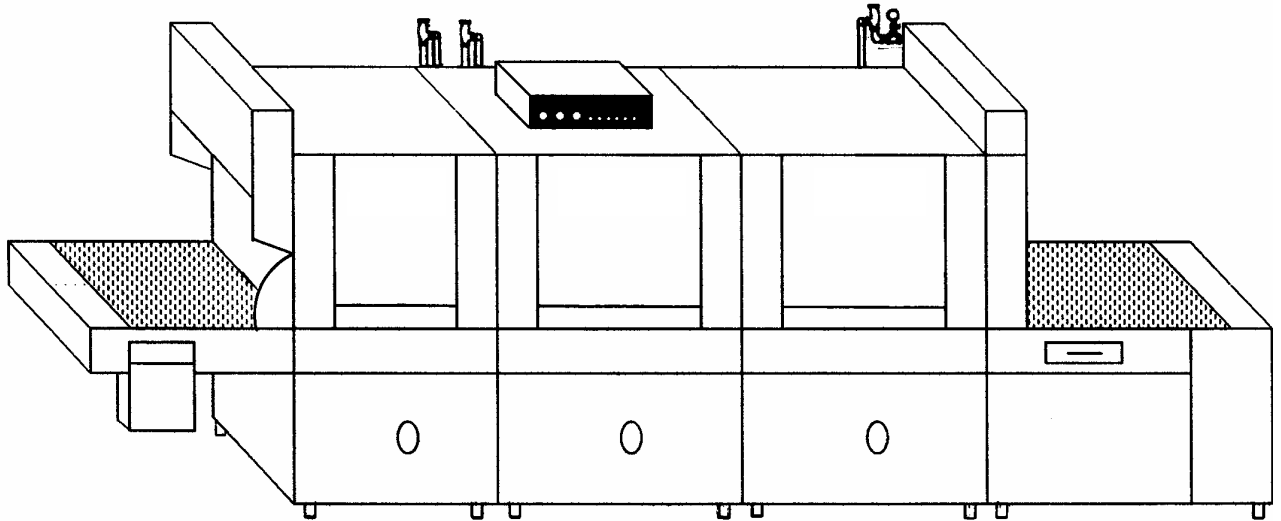


ILLUSTRATED PART'S MANUAL

BLAKESLEE

Division of Blako Inc.

FLIGHT – TYPE DISHWASHER



I.R.S.+ Integrated Recirculating System Design

1844 South Laramie Avenue
Chicago, IL 60804
Phone (708) 656-0660
Fax (708) 656-0017

www.blakesleeinc.com
service@blakesleeinc.com

1149 Bellamy Road North Unit 19
Scarborough, Ontario Canada M1H1H7
Phone (416) 751-2625
Fax (416) 751-8539

Revision 5/2005

Flight Type Dishwasher Table of Contents

Page	DESCRIPTION
1	Table of Contents
2	Tank Weldment, Door and Support Weldment, Figure 1
3	Tank Weldment, Door and Support Weldment, Parts List
4	Spray Boxes, Spray Tubes and Scrap Trays, Figure 2
5	Spray Boxes, Spray Tubes and Scrap Trays, Parts List
6	Recirculating System, Drain & Overflow Assembly, Front and Back Panels, Figure 3
7	Recirculating System, Drain & Overflow Assembly, Front and Back Panels, Parts List
8	Stand Pipe Selector Chart
9	Pump Motors
10	Main Control Box Components
11	Door Safety Switch Assembly
12	Door Safety Switch / Latch Bar Chart
13	Liquid Level Control
14	Electric Heat Components, Figure 9
15	Electric Heat Components, Parts List
16	Steam Coil Assembly, Figure 10
17	Steam Coil Assembly, Parts List
18	Steam Injector, Figure 11
19	Steam Coil Assembly, Parts List
20	Fill Line Plumbing Assembly, Figure 12
21	Fill Line Plumbing Assembly, Parts List
22	Final Rinse Plumbing Assembly, Figure 13
23	Final Rinse Plumbing Assembly, Parts List
24	Final Rinse Economizer Controls Assembly
25	Trip Gate Assembly
26	Conveyor Assembly
27	Tracks
28	B Drive Assembly, Figure 18
29	B Drive Assembly, Parts List
30	B Drive Assembly, Parts List
31	Conveyor Stop Mechanism
32	Load Section
33	Sprocket Shaft Assembly
34	Extended Load Section, Figure 22
35	Extended Load Section, Parts List
36	Load Section Flushing Section
37	Upper Flush Spray
38	Extended Load Sections, Flusher Hoods & Plumbing, Figure 25
39	Extended Load Sections, Flusher Hoods & Plumbing, Parts List A
40	Extended Load Sections, Flusher Hoods & Plumbing, Parts List B
41	Hood and Vent Assembly
42	Unload Section, Figure 26
43	Unload Section Extension, Figure 27
44	Steam Booster, Figure 28
45	Steam Booster, Parts List
46	Basic Electrical Material List
47	Basic Electrical Material List
48	Basic Electrical Material List
49	Service & Parts Distributors

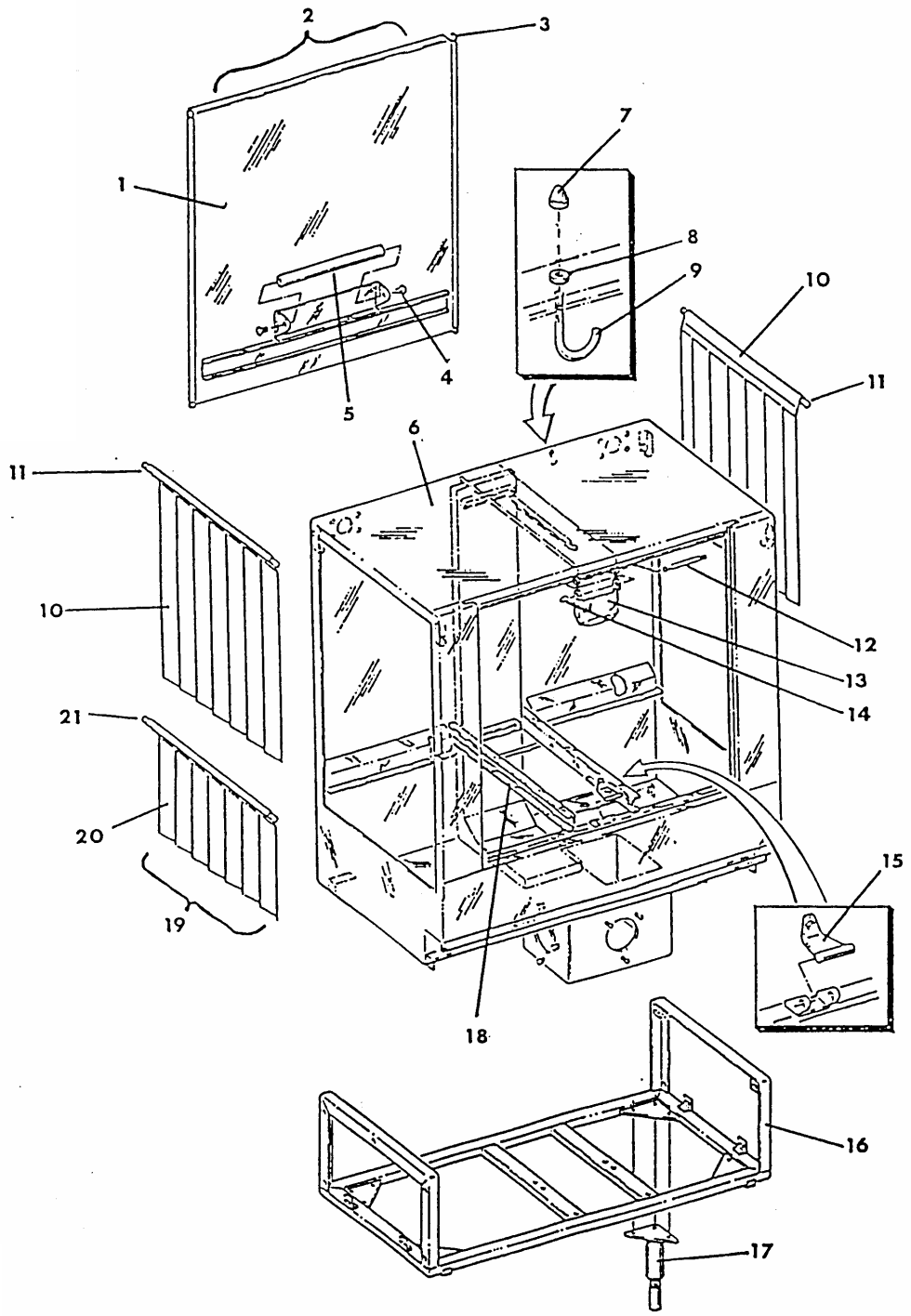


FIGURE: 1. TANK WELDMENT, DOOR & SUPPORT WELDMENT

TANK WELDMENT, DOOR & SUPPORT WELDMENT

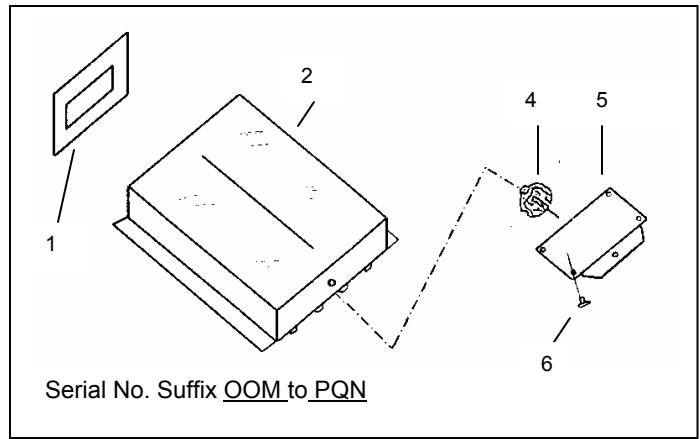
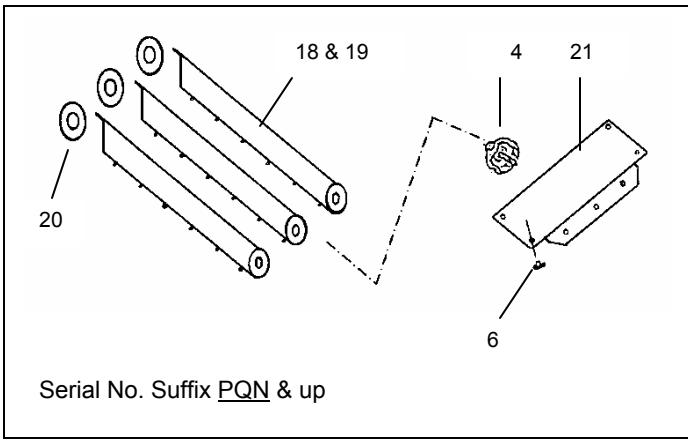
ITEM NO.	PART NO.		DESCRIPTION
	Standard	X-Wide	
1	—	—	Discontinued (Replace with Assembly)
2	13775	13775	* P Tank Door Assembly
	13774	13774	* E, L & M Tank Door Assembly
	73583	73583	6" Higher, P Tank Door Assembly
	73584	73584	6" Higher, E, L & M Tank Door Assembly
	73801	73801	Standard Height Split Door P Tank, Upper
	73803	73803	Standard Height Split Door E,L,M Tank, Upper
	73804	73804	Standard Height Split Door P Tank, Lower
	73805	73805	Standard Height Split Door E,L,M Tank, Lower
	76300	76300	6" Higher, Split Door P Tank, Upper
	76294	76294	6" Higher, Split Door E,L,M Tank, Upper
	76303	76303	6" Higher, Split Door P Tank, Lower
	76297	76297	6" Higher, Split Door E,L,M Tank, Lower
3	1122	1122	Plug – Bumper (4 Req.)
4	95808	95808	Screw – Truss HD. 1/4-20x3/4 in. (2 Req.)
5	73128	73128	Handle
6	73089	74290	Weldment – P Tank
	72951	74275	Weldment – E Tank
	72916	74095	Weldment – L Tank
	72950	74280	Weldment – M Tank
7	8140	8140	Nut – Acorn, 1/4-20 Stainless Steel (2 Req.)
8	7146	7146	Nut – Hex, 1/4-20 Stainless Steel (2 Req.)
9	12951	12951	Hook (2 Req.)
10	8851	8852	Curtain (2 Req.)
	99354	99411	6" Higher Curtain (2 Req.)
11	5616	5678	Rod – Curtain (2 Req.)
12	7025	7025	Pin – Door Retainer
13	5860	5860	Retainer – Door
14	8140	8140	Nut – Acorn, 1/4-20 Stainless Steel (2 Req.)
15	5541	5541	Pilot Carrier - Lower
16	73404	9096	Weldment – P Tank Support
	73405	9097	Weldment – E Tank Support
	73406	9098	Weldment – L Tank Support
	73407	9099	Weldment – M Tank Support
17	8570	8570	Weldment – Stainless Steel Foot
	5933	5933	Screw – Hex Head. Cap, 3/8-16x1/2 in. (3 Req.)
	17245	17245	Lock Washer, 3/8 (3 Req.)
18	72833	74529	Weldment – Track E, L & M Tank
19	12939	12953	+ Short Curtain Assembly
20	12938	12952	Curtain – Short
21	18437	18463	Rod – Curtain, Short

P – 24 in. Tank
E – 36 in. Tank
L – 40 in. Tank
M – 50 in. Tank

* Includes items 1,3,4 & 5

+ Includes Items 7, 8, 9, 20 & 21

UPPER SPRAY



LOWER SPRAY

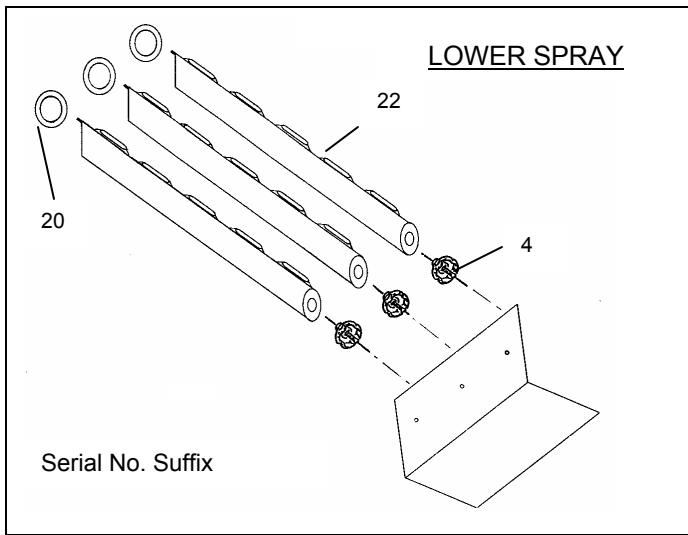
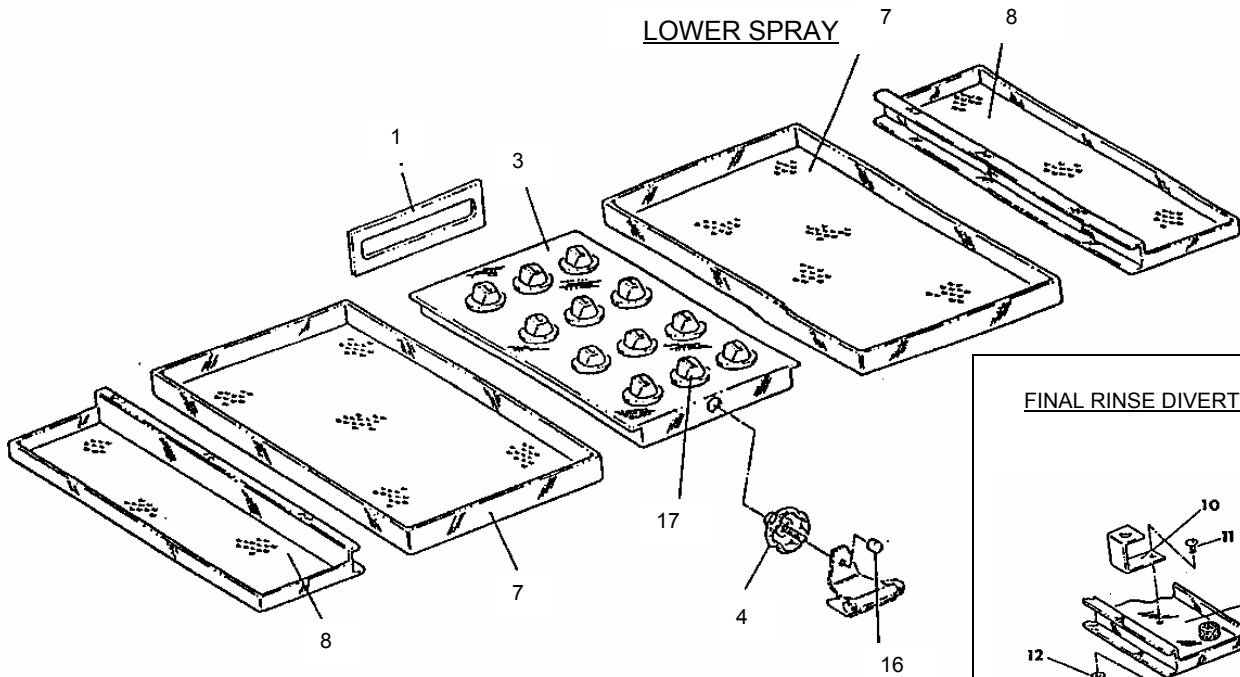


FIGURE: 2. SPRAY BOXES, SPRAY TUBES & SCRAP TRAYS

SPRAY BOXES, SPRAY TUBES AND SCRAP TRAYS

ITEM NO.	PART NO.		DESCRIPTION
	Standard	X-Wide	
1	73163	**	Spray Box Gasket
2	72814	74232	Upper Spray Box Weldment
3	72811	74528	Lower Spray Box Weldment
4	5542	**	Pilot Screw
5	9109	**	Pilot Carrier
6	8146	**	¼-20 x 3/8 Rd. Head M.S. Stainless Steel
7	72864	74401	Scrap Tray w/o Lower Spray Tube P-Tank
	73666	74400	Scrap Tray with Lower Spray Tube P-Tank
	72794	74295	Scrap Tray E Tank
	14573	18111	* Scrap Tray E Tank
	72921	74115	Scrap Tray L & M Tank
	3710	5452	* Scrap Tray L & M Tank
8	73643	74411	End Filler Weldment P Tank
	4793	5548	* End Filler Weldment P Tank
	73566	74411	End Filler Weldment E & L Tank
	5411	5549	* End Filler Weldment E & L Tank
	73567	74413	End Filler Weldment M Tank
	5544	5550	* End Filler Weldment M Tank
9	73639	74531	End Filler Weldment w/ Diverter E & L Tank
	16902	16905	* End Filler Weldment w/ Diverter E & L Tank
	73641	74532	End Filler Weldment w/ Diverter M Tank
	16903	16906	* End Filler Weldment w/ Diverter M Tank
10	95830	**	Pipe Retainer
11	8130	**	¼-20 x ½" Stainless Steel Truss Head Screw
12	7007	**	¼ Stainless Steel Lock Washer
13	7146	**	¼-20 Stainless Steel Nut
14	7147	**	Tube Connector Weldment
15	7322	**	Hose Clamp
16	71684	**	Plastic Cap
17	3726	**	Spray Box Nozzle
18	72862	76310	Upper Spray Tube P Tank
19	74970	75542	* Upper Spray Tube E, L & M Tank
20	76131	**	* Spray Tube Seal E, L & M Tank
21	75540	**	Upper Carrier
22			Lower Spray Tube P Tank
23			Lower Spray Tube E, L & M Tank

Items Not Illustrated

** O-Ring Spray Tube P Tank
Lower Spray Tube P Tank

* Items used on machines with serial suffix Q Q N and up
** Same as Standard Width

RECIRCULATING SYSTEM, DRAIN & OVERFLOW ASSEMBLY
AND FRONT & BACK PANELS

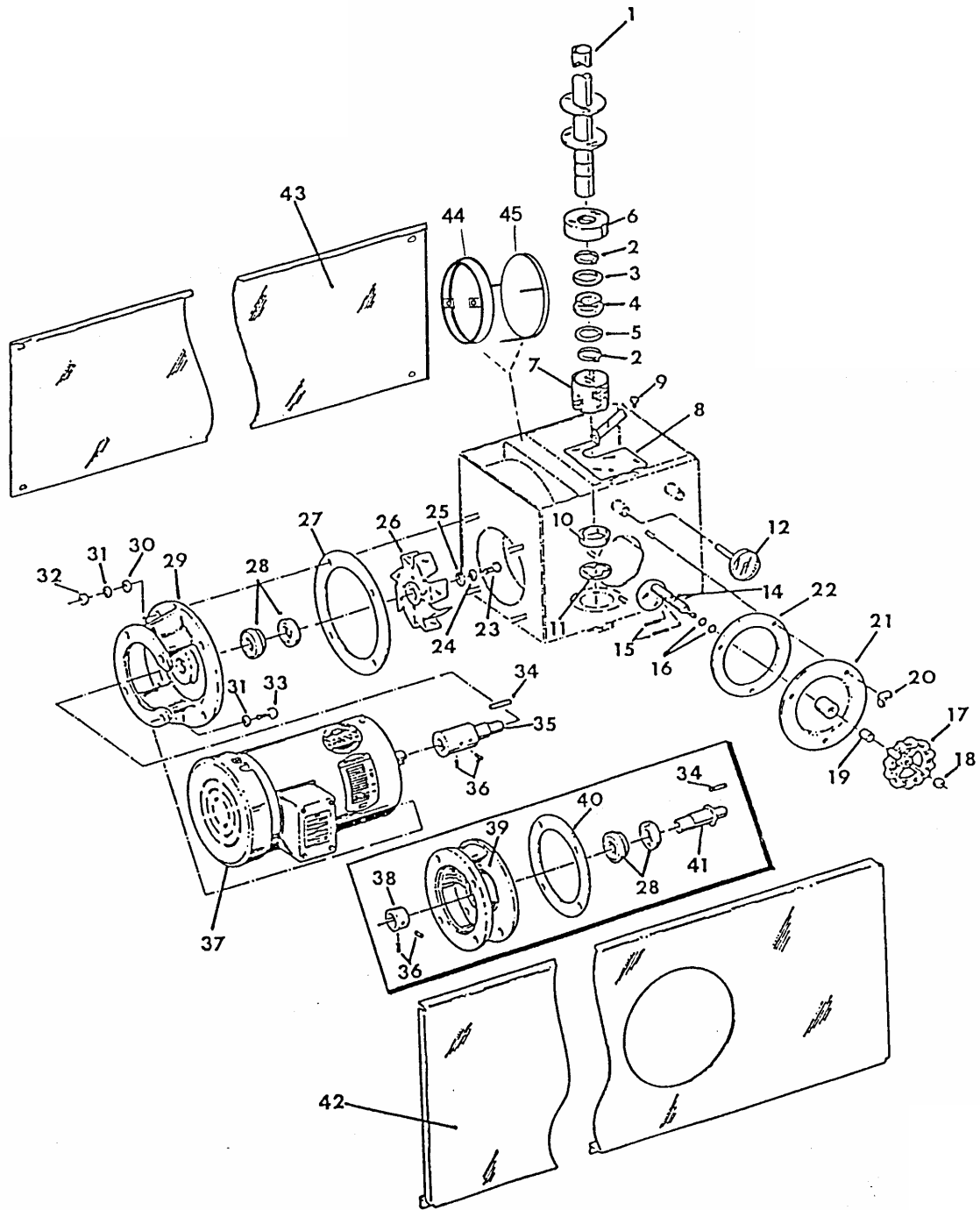


FIGURE: 3

MACHINES WITH SERIAL NUMBER SUFFIX OOM AND UP

RECIRCULATING SYSTEM, DRAIN & OVERFLOW ASSEMBLY
AND FRONT & BACK PANELS

ITEM NUMBER	PART NUMBER	DESCRIPTION	QTY REQ.
1	—	Stand Pipe Assembly – See Chart on page 8	2
2	18647	Retaining Ring	1
3	18645	Washer	1
4	18427	Drain Plug	1
5	18646	Washer	1
6	18641	Screen Retainer	1
7	18642	Screen	1
8	72801	Stand Pipe Guide	1
9	5953	Hex Head Mach. Screw 3/8-16 x 1/2"	2
10	18644	Drain Sear	1
11	18648	Guide Ring	1
12	7802	Thermometer	1
13	13898	Cam Shaft Assembly (Includes items 14 thru 18)	1
14	14802	Cam Shaft Weldment	1
15	14895	Stop Pin	2
16	10340	O-Ring	2
17	2924	Knob	1
18	18794	Hex Nut	1
19	13905	Spacer	1
20	13927	Wing Nut	3
21	14795	Door	1
22	14797	Door Gasket	1
23	7621	Hex Head Capscrew	1
24	5996	Lock Washer	1
25	5587	S/S Flat Washer	1
26	95673	Impeller	1
26A	77174	Impeller – P Tank (95682 old style, changed 11/03)	1
27	74815	O-Ring	1
28	2255	Seal Assembly	1
29	4667	Bracket	1
30	8523	Sealing Washer	4
31	5994	Lock Washer	8
32	7115	Hex Nut	4
33	7656	Hex Head Capscrew	4
34	1658	Key – P Tank	1
35	17514	Impeller Spindle	1
36	7117	5/16-18 Nylock Set Screw – P Tank	2
37	—	Pump Motor – See Chart page 9	
38	7562	Collar– P Tank	1
39	13087	Bracket – P Tank	1
40	5871	Gasket – P Tank	1
41	95551	Impeller Spindle – P Tank	1
42	—	Front Panel	
42A	73082	Front Panel – P Tank	
42B	72943	Front Panel – E Tank	
42C	72919	Front Panel – L Tank	
42D	72942	Front Panel – M Tank	
43	—	Back Panel – Optional	
43A	42970	Back Panel – P Tank	
43B	72968	Back Panel – E Tank	
43C	72967	Back Panel – L Tank	
43D	72966	Back Panel – M Tank	
44	18431	Impeller Guard Housing Weldment	1
45	18428	Impeller Guard Disk Weldment	1

PARTS LIST FOR PUMP KITS

C/E/L/M Tanks Kit No. 77085

Item	Part No.	Description	Qty
23	7621	Hex Head Cap Screw	1
25	5587	S.S. Flat washer	1
26	95673	Impeller	1
27	74815	O-Ring	1
28	2255	Seal Ass'y	1
29	4667	Bracket	1
30	5994	Sealing Washer	4
31	7115	Lock Washer	8
32	1658	Hex Nut	4
34	17514	Key	1
35	7117	Impeller Spindle	1
36	8523	5/16-18 Nylock Set screw	2
P Tank Kit No. 77086			
23	7621	Hex Head Cap Screw	1
25	5587	S.S. Flat washer	1
26	95682	Impeller	1
27	5871	Gasket	1
28	2255	Seal Ass'y	1
29	13087	Bracket	1
30	8523	Sealing Washer	4
31	5994	Lock Washer	8
32	7115	Hex Nut	4
34	1658	Key	1
35	95551	Impeller Spindle	1
36	7117	5/16-18 Nylock Set screw	4
38	7562	Collar	1

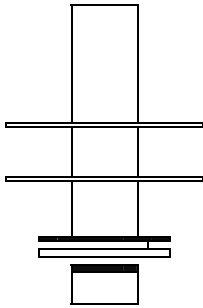
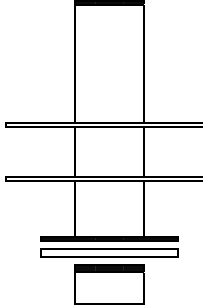
Part No.	18656	18639
		
F-E, F-L, F-M	Wash Tank	
F-PE, F-PL, F-PM	Prewash Tank	Wash Tank
F-EE, F-LL, F-MM	Wash Tank Rinse Tank	
F-PEE, F-PLL, F-PMM	Prewash Tank Rinse Tank	Wash Tank
F-EEE, F-LLL, F-MMM	Wash Tank Rinse Tank	Wash Tank

FIGURE: 4. STAND PIPE SELECTOR CHART

PUMP MOTORS

ITEM NUMBER	PART NUMBER	DESCRIPTION
		STANDARD 60 CYCLE MOTORS
37	07375	Motor- ½ H.P. "C" Flange, FR. 56, 115/230V. 1 Phase
37A	18059	Motor- ½ H.P. "C" Flange, FR. 56, 208V. 1 Phase (Special Order Only)
37B	07382	Motor- ½ H.P. "C" Flange, FR. 56, 208/340. 3 Phase
37C	08335	Motor- 2 H.P. "C" Flange, FR. 213, 115/230. 1 Phase
37D	08337	Motor- 2 H.P. "C" Flange, FR. 184, 208/220/440V. 3 Phase
37E	14475	Motor- 3 H.P. "C" Flange, FR.182TC
<div style="border: 1px solid black; padding: 5px; display: inline-block; margin: 10px auto; width: 300px;">ADDITIONAL 60 CYCLE MOTORS</div>		
37F	17798	Motor-1 H.P. "C" Flange, FR. 182, 115/208/230V. 1 Phase
37G	18060	Motor-1 H.P. "C" Flange, FR.56, 208V. 1 Phase (Special Order Only)
37H	08247	Motor- 1 H.P. "C" Flange, FR. 182, 208/220/440V.3 Phase
37I	08336	Motor- 1 ½ H.P. "C" Flange, FR. 184, 115/208/230V. 1 Phase
37J	18061	Motor- 1 ½ H.P. "C" Flange, FR. 184, 208V. 1 Phase (Special Order)
37K	08039	Motor- 1 ½ H.P. "C" Flange, FR. 184, 208/220/440V. 3 Phase
37L	17798	Motor-1 H.P. "C" Flange, FR. 182, 115/208/230V. 1 Phase
<div style="border: 1px solid black; padding: 5px; display: inline-block; margin: 10px auto; width: 300px;">OPTIONAL 50 CYCLE MOTORS</div> (Export Use Only)		
37M	16922	Motor- ½ H.P. "C" Flange, 115/230V. 1 Phase
37N	16923	Motor- ½ H.P. "C" Flange, 220/440V. 3 Phase
37O	16241	Motor- 1 H.P. "C" Flange, 220/440V. 1 Phase
37P	16300	Motor- 1 H.P. "C" Flange, 220/440V. 3 Phase
37Q	16924	Motor- 1 ½ H.P. "C" Flange, 115/230V. 1 Phase
37R	16243	Motor- 1 ½ H.P. "C" Flange, 220/440V. 3 Phase
37S	16925	Motor- 2 H.P. "C" Flange, 115/230V. 1 Phase
37T	16926	Motor- 2 H.P. "C" Flange, 115/230V. 3 Phase
<div style="border: 1px solid black; padding: 5px; display: inline-block; margin: 10px auto; width: 300px;">Not Shown Used in Quick Start System</div>		
	W-0-77245	220 Volt Pump & Motor for Quick Start Wash Tank Fill (Call Factory)
	W-0-77252	115 Volt Pump & Motor for Quick Start Wash Tank Fill
	W-0-07201	Transformer use with Pump 77252 in 220/480 Volt Machines

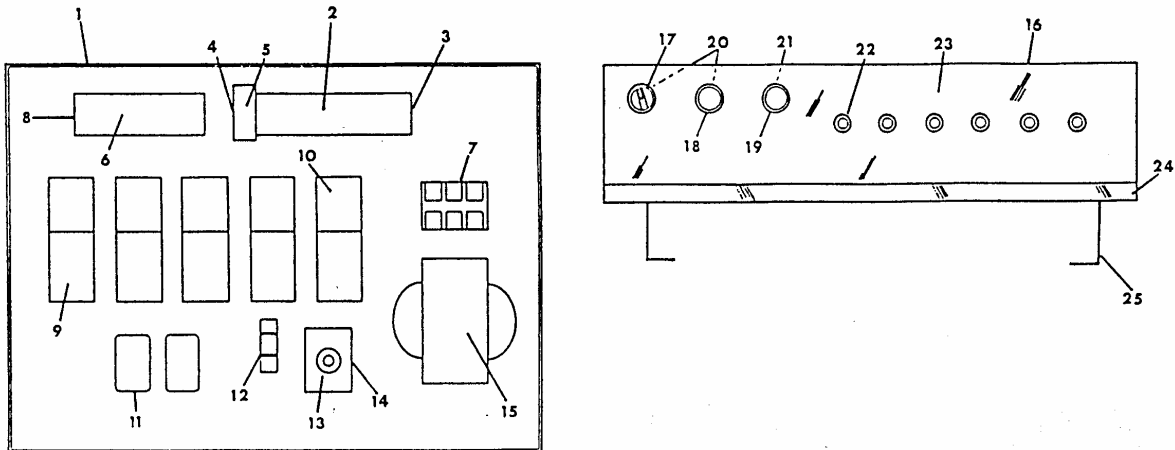
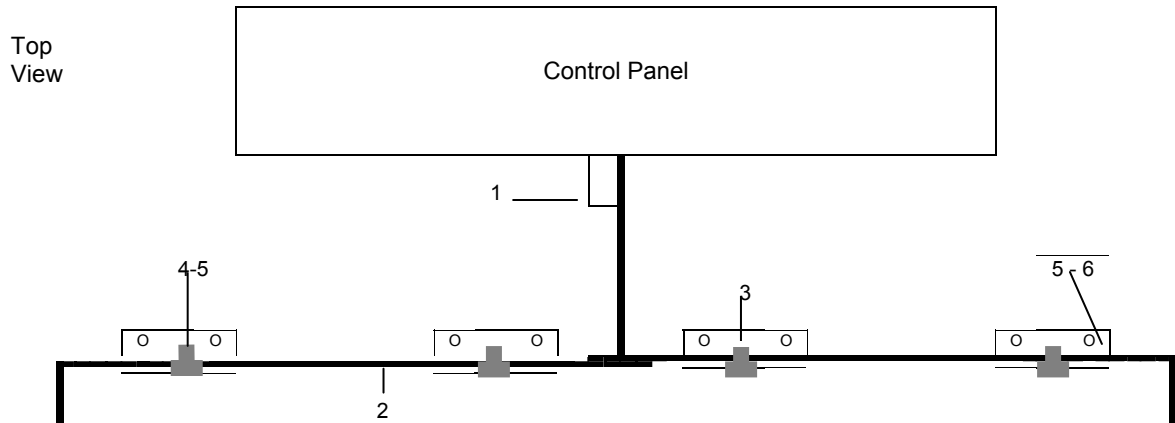


FIGURE: 5. MAIN CONTROL BOX COMPONENTS

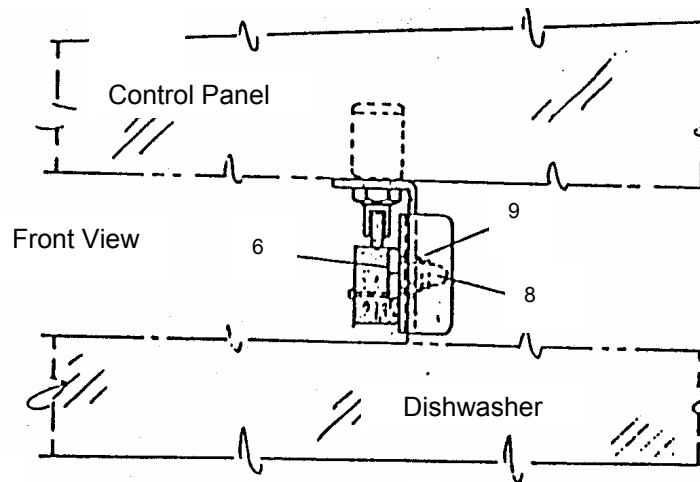
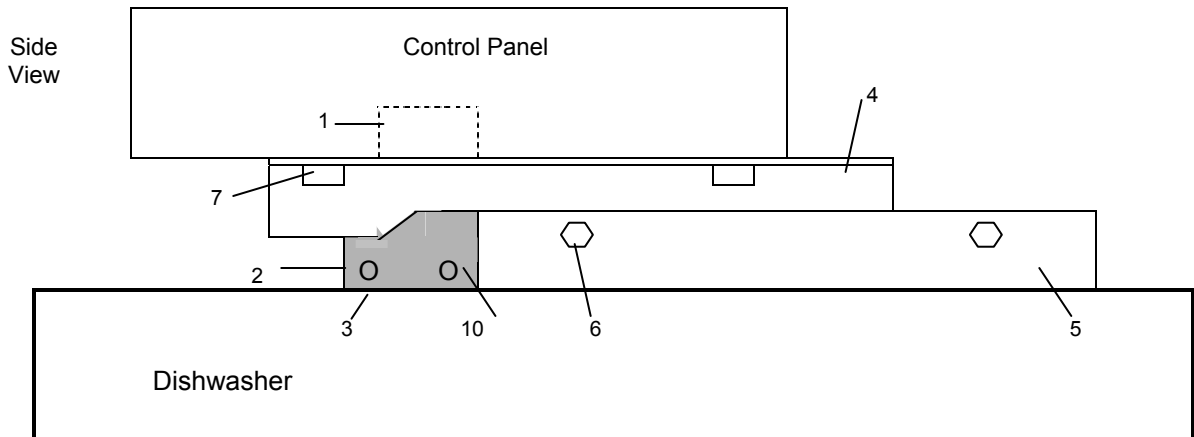
ITEM	PART NO.	DESCRIPTION	QTY
1	72381	Control Box Weldment	1
2	15795	Power Voltage Terminal Block	12
3	15797	End Barrier	5
4	15800	Fuse Clip	1
5	15790	Fuse 3.2 amp Slo-Blo	1
6	15769	Control Voltage Terminal Block	22
7	16782	Terminal Block	3
8	15799	Mounting Channel	2
9	70192	Motor Contactor	A/R
10	-	3 Pole Motor Overload Relay	1
10a	71602	Amp. Range 5.5 to 8	A/R
10b	71600	Amp. Range 2.5 to 4	A/R
10c	71599	Amp. Range 1.6 to 2.5	A/R
10d	71598	Amp. Range 1 to 1.6	A/R
11	14246	Control Relay	A/R
12	73836	Door Safety Switch	1
13	71481	Time Delay Relay	A/R
14	71485	8 Pin Socket	A/R
15	14440	Transformer	1
16	72380	Control Box Cover	1
17	72387	Selector Switch	1
18	97275	Start Push Button	1
19	97274	Stop Push Button	1
20	97276	Control Block N.O. –Not illustrated	1
21	97277	Contact Block N.C. – Not illustrated	1
22	16559	Light "Red" – Power	6
23	72390	Name Plate	1
24	72885	Angle	1
25	72388	Mount	2

FIGURE: 6. Door Safety Switch Assembly



ITEM	PART NO.	DESCRIPTION	QTY
1	74020	Safety Switch Ass'y	1
2	73963	Latch Bar	2
3	73956	Support	4
4	73958	Shoulder Screw	4
5	7093	¼" Acorn L' Nut	12
6	5742	¼-20 x 3/8" Weld Stud	8

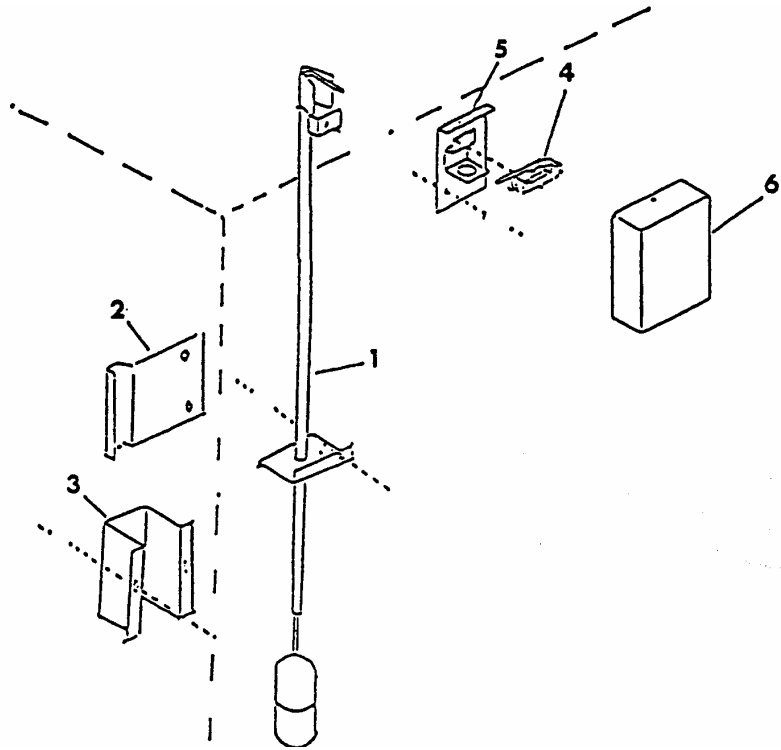
FIGURE: 7. Door Safety Switch Assembly



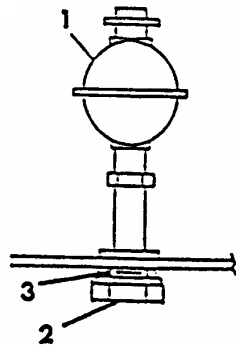
ITEM	PART NO.	DESCRIPTION	QTY
1	73836	Micro Switch	1
2	73957	Actuator Block	1
3	73961	Spacer	1
4	73962	Support Bracket	1
5	73960	Door Latch	1
6	73958	Shoulder Screw	2
7	7118	1/4-20 x 1/2" lg. H.H. Screw	2
8	7093	1/4" Acorn L' Nut	4
9	99416	1/4" Plain Washer	4
10	10306	8-32 x 5/8" lg. Screw	2

FIGURE: 8 LIQUID LEVEL CONTROLS

ITEM	PART NO.	DESCRIPTION	QTY
1	72396	Float & Rod Sub assembly	1
2	72404	Float and Tube Guard	1
3	72392	Float Housing	1
4	72620	Float Switch	1
5	72324	Mounting Plate Liquid	1
6	70464	Switch Enclosure	1



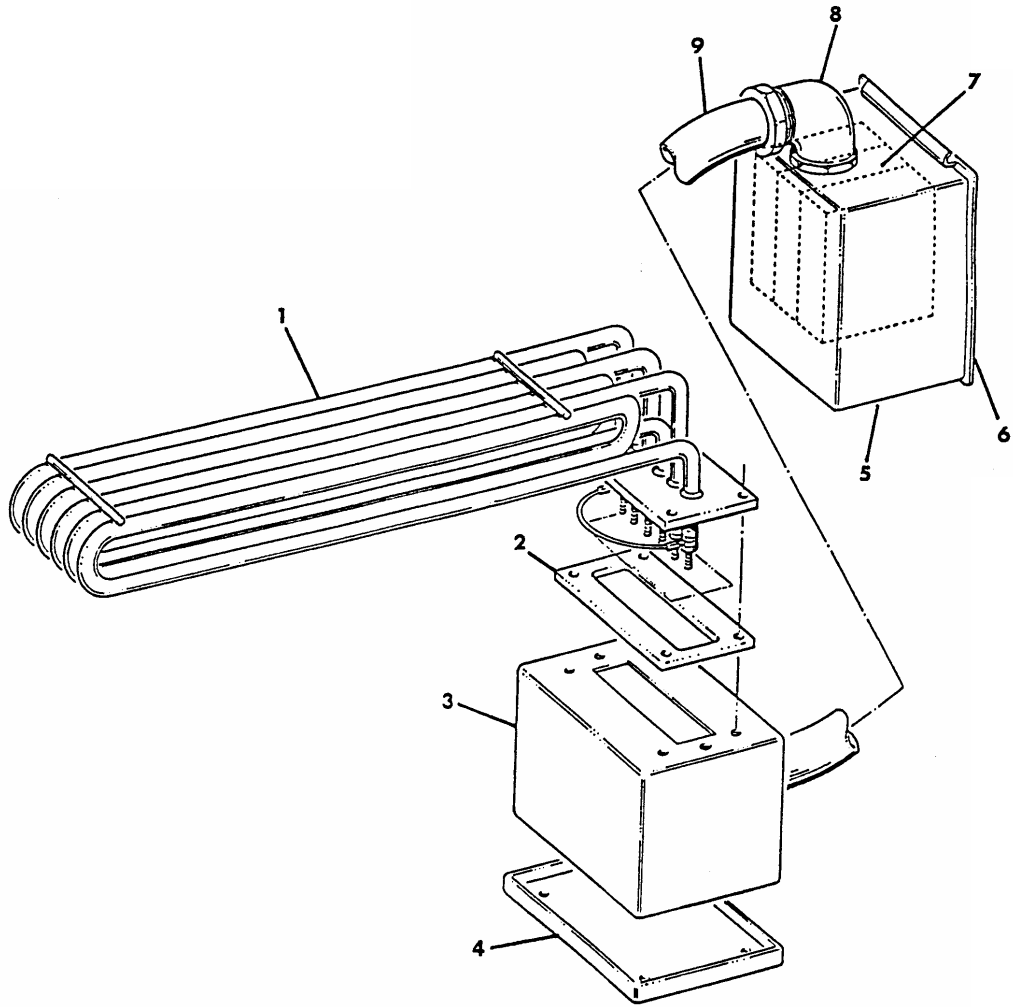
USED ON MACHINES WITH SERIAL NUMBER SUFFIX NOK TO RRP



ITEM	PART NO.	DESCRIPTION
1	18865	Float Switch
	20784	Float Switch (Pre-wash)
2	7684	1/2" to 1/4" Reducer Bushing
3	7683	1/4" Close Nipple

USED ON MACHINES WITH SERIAL NUMBER SUFFIX RRP AND UP

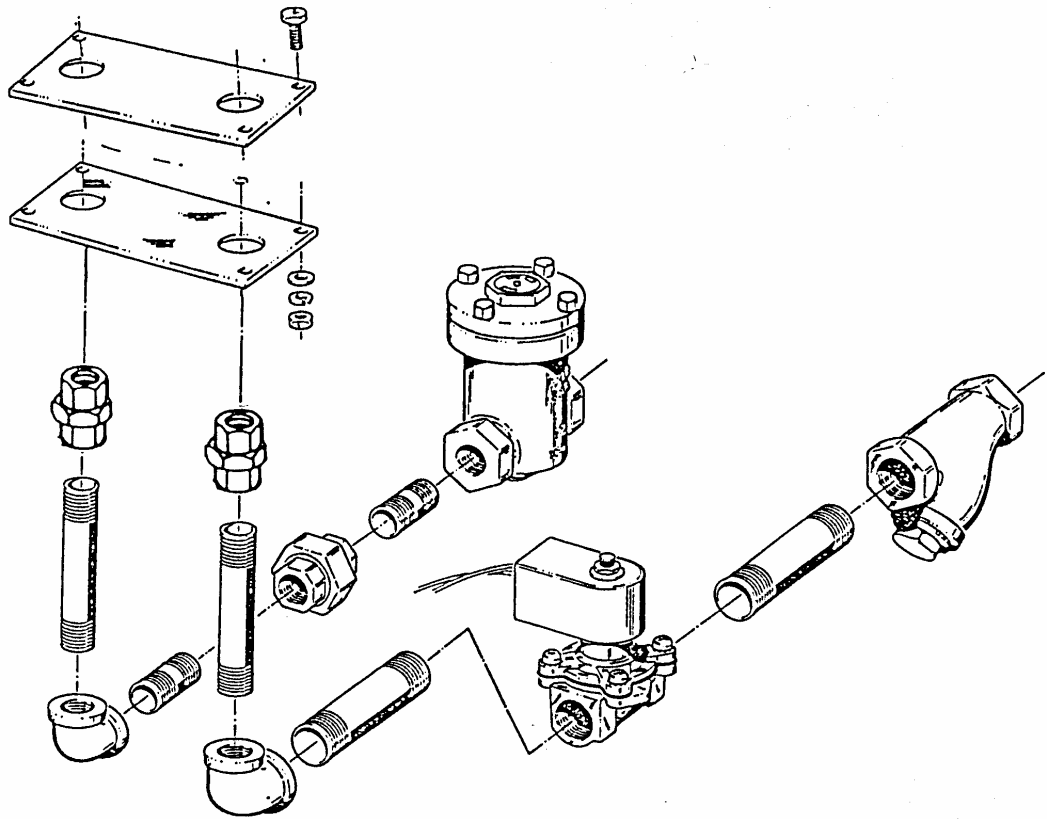
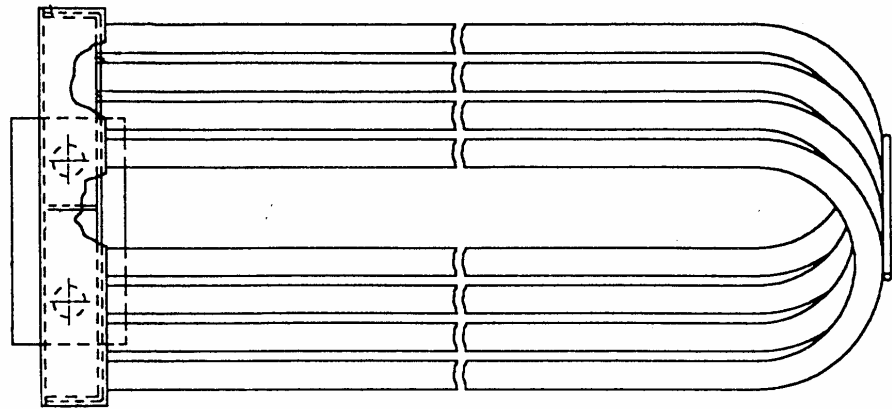
FIGURE: 9. ELECTRIC HEAT COMPONENTS



ELECTRIC HEAT COMPONENTS

ITEM NUMBER	PART NUMBER	DESCRIPTION
*1	72775	Immersion Heater 10 KW 208/240V
*1a	72756	Immersion Heater 10 KW 440V
-1b	72850	Immersion Heater 15 KW 208/240V
*1c	72851	Immersion Heater 15 KW 440V
*1d	72853	Immersion Heater 20 KW 208/240V
*1e	72854	Immersion Heater 20 KW 440V
*2	72834	Gasket
*3	72831	Connection Box
*4	72830	Cover
5	73036	Contactoer Box
6	73037	Cover
7	7210	60 amp Contactoer
7a	7211	90 amp Contactoer
8	7586	1" Sealtight Connector
9	7591	1" Sealtight – Per Foot
* items used on machines with serial number suffix <u>OOM</u> to <u>QQN</u>		
Below items are used on machines with serial number suffix <u>QR</u> <input type="checkbox"/> and up.		
1	75456	Immersion Heater 10 KW 208/240V
1a	75459	Immersion Heater 10 KW 440V
1b	75455	Immersion Heater 15 KW 208/240V
1c	75458	Immersion Heater 15 KW 440V
1d	75210	Immersion Heater 20 KW 208/240V
1e	75457	Immersion Heater 20 KW 440V
2	75570	Gasket
3	75545	Terminal Box
4	75543	Cover

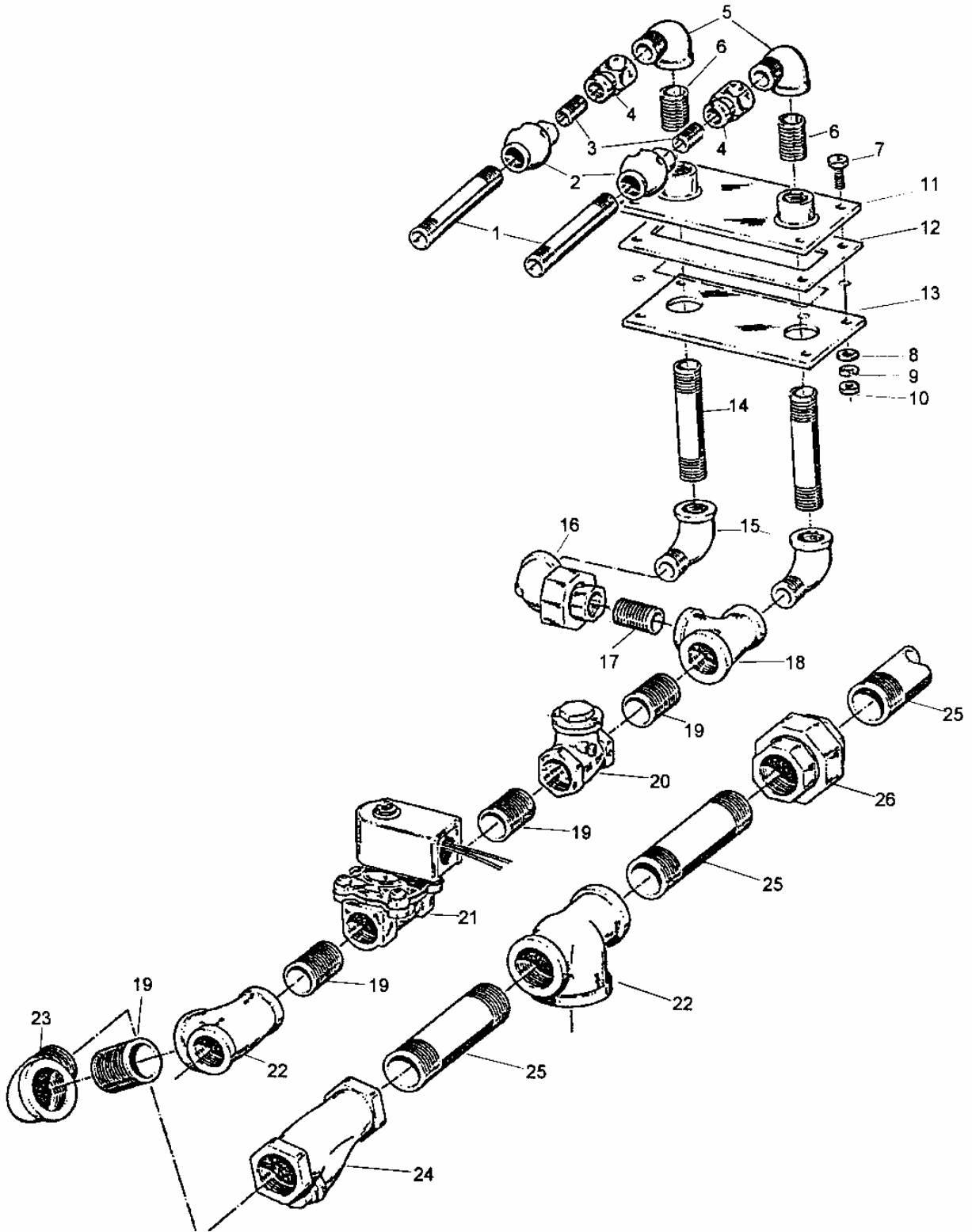
FIGURE 10. STEAM COIL ASSEMBLY



STEAM COIL ASSEMBLY

ITEM	PART NUMBER	DESCRIPTION	QTY
1	76653	Steam Coil L&M Tank	1
1A	76654	Steam Coil C Tank	1
2	72834	Gasket	1
3	73125	Plate	1
4	11957	1/2" Union	2
5	13051	1/2" x 4" Nipple	2
6	7643	3/4" x 1/2" Reducer Elbow	2
7	14025	3/4" x 4 " Nipple	2
8	12085	Solenoid Valve	1
9	7026	Line Strainer	1
10	16877	Steam Trap	1
11	7509	3/4" Close Nipple	2
12	13608	3/4" Union	1
13	98489	1/4-20 x 7/8 Hex Head S/S	6
14	8519	1/4 Sealing Washer	6
15	7007	1/4 Lockwasher	6
16	7146	1/4-20 Hex Nut S/S	6

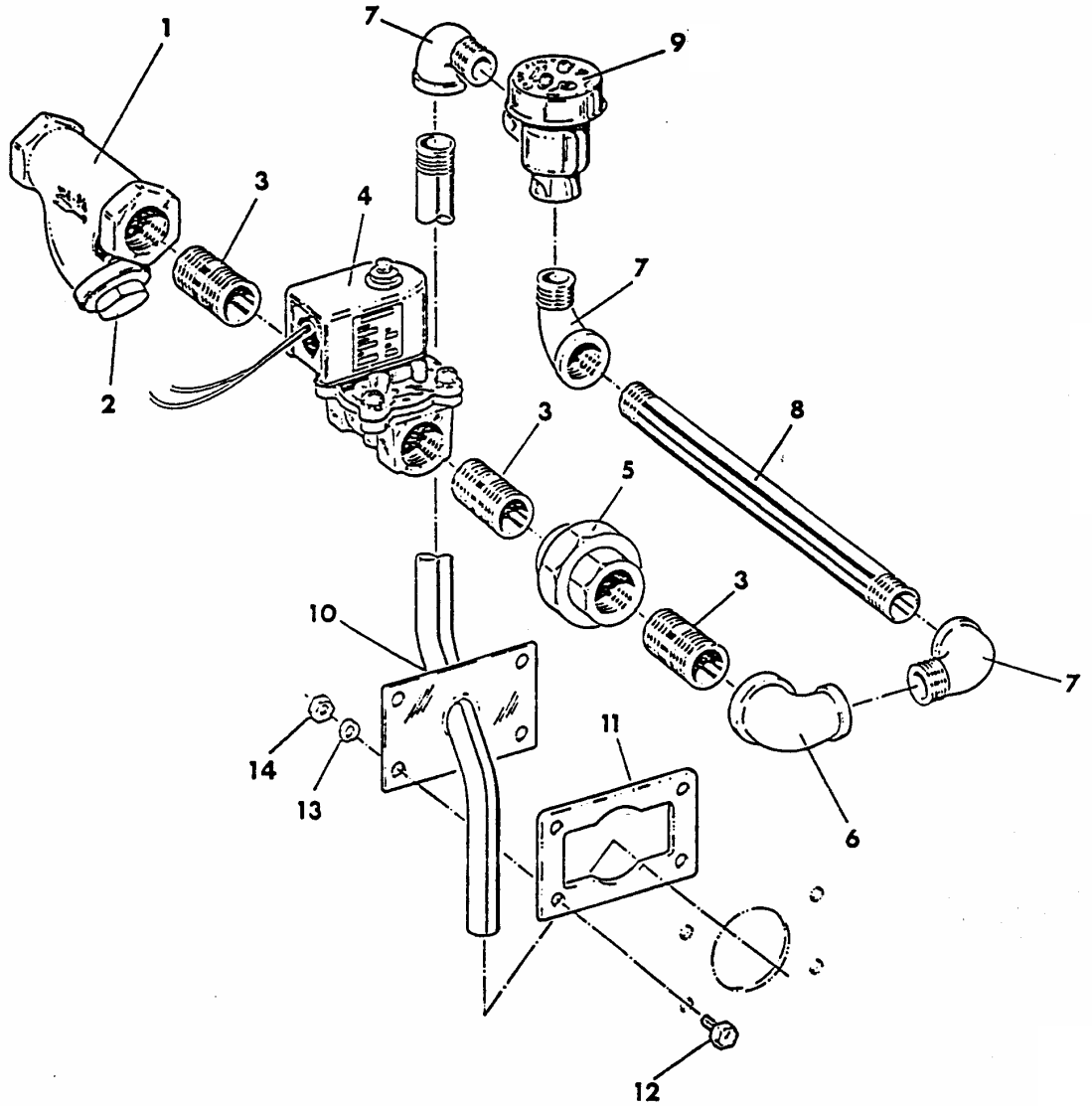
FIGURE 11. STEAM INJECTOR



STEAM INJECTOR ASSEMBLY

ITEM	PART NO.	DESCRIPTION	QTY
1	7682	3/8 X 4" Brass Nipple	2
2	7027	Steam Hater Heater	2
3	7683	1/4 Close Nipple	2
4	13589	1/2 to 1/4 Brass Reducer	2
5	12495	1/2 - 90 Street Elbow	2
6	10725	1/2 Close Nipple	2
7	98489	1/4-20 x 7/8 Hex Head	6
8	8519	1/4 Sealing Washer	6
9	7007	1/4 Lock Washer	6
10	7146	1/4-20 S/S Hex Nut	6
11	74700	Steam Injector Plate Weldment	1
12	72834	Gasket	1
13	73125	Lower Plate	1
14	13051	1/2 x 4" Nipple	2
15	11947	1/2 - 90 Street Elbow	2
16	18963	1/2 - 90 Union Elbow	1
17	7643	1/2 Close Nipple	1
18	7694	3/4 x 1/2 x 1/2 Tee	1
19	7634	3/4 Close Nipple	4
20	7777	3/4 Check Valve	1
21	12085	3/4 Steam Solenoid Valve	2
22	18941	3/4 x 3/4 x 3/4 Tee	1
23	14825	3/4 - Street Elbow	1
24	7026	3/4 Line Strainer	1
25		3/4 x 7 Nipple B.I.	3
26	11968	3/4 Union B.I.	1

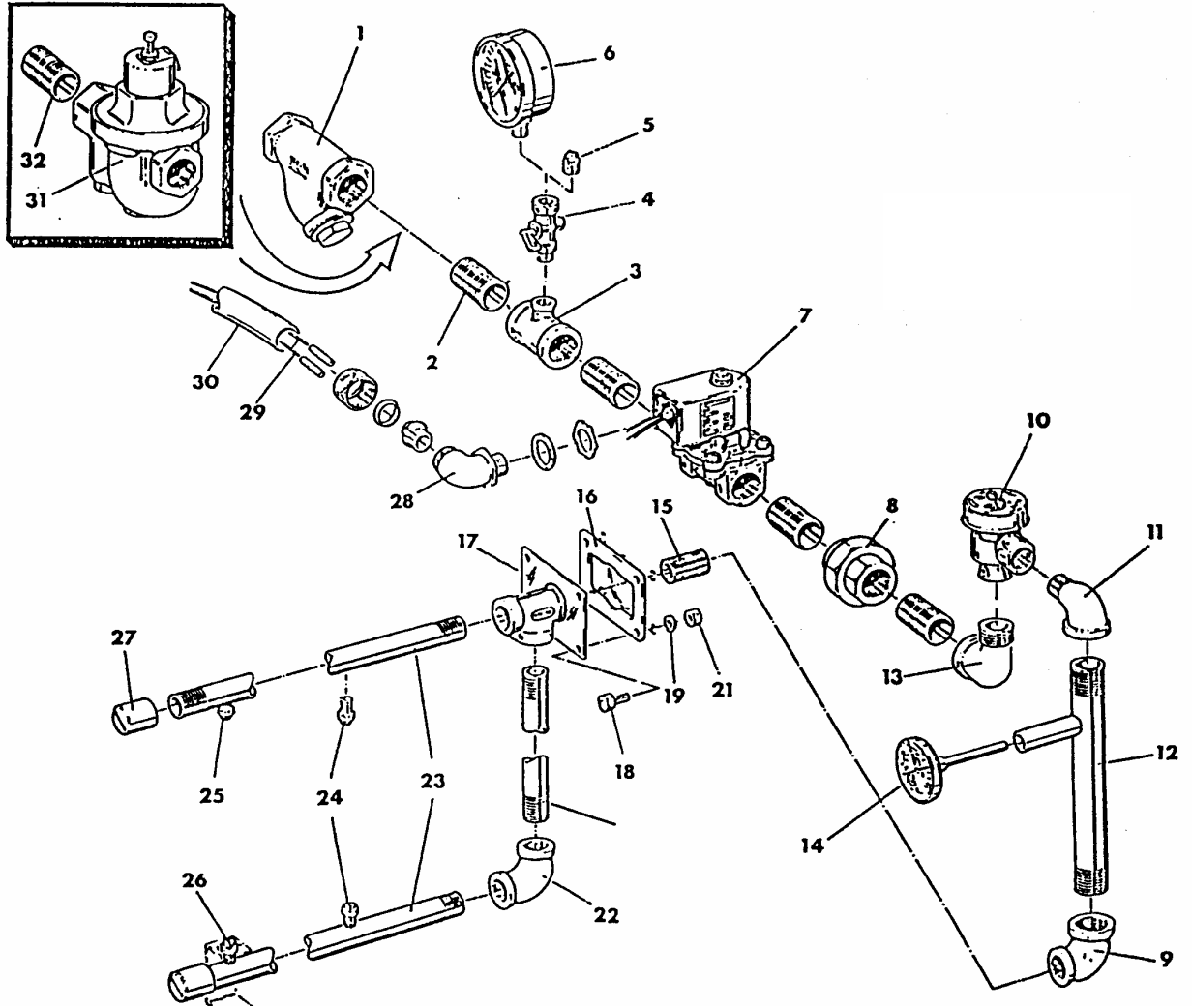
FIGURE: 12. FILL LINE PLUMBING ASSEMBLY



FILL LINE PLUMBING ASSEMBLY

ITEM NUMBER	PART NUMBER	DESCRIPTION	QTY
1	7026	Strainer – Line, ¾ in.	1
	13385	Screen – Line Strainer	1
	17506	O-Ring, Line Strainer	1
2	17507	Cap – Line Strainer	1
3	7509	Nipple – Close Brass, ¾ in.	3
4	12488	Valve – Solenoid	1
	75784	Coil – Solenoid Valve	1
	75606	Kit – Solenoid Valve Repair	1
5	13608	Union – Brass, ¾ in.	1
6	13441	Elbow – Brass Chrome Plated, ¾ x ½ x 90	1
7	7034	Elbow – Brass Chrome Plated Street ½ X 90	3
8	11031	Nipple – Brass Chrome Plated, ½ x 10 3/8	1
9	5912	Breaker – Vacuum, ½	1
	14836	Kit Vacuum Breaker Repair, ½	1
10	11413	Weldment, Fill Line Pipe	1
11	2292	Gasket	1
12	7118	Screw – Stainless Steel Hex Head, ¼-20 x 1 ½	4
13	7007	Lockwasher – Stainless Steel, ¼	4
14	7146	Nut - Stainless Steel, ¼-20	4

FIGURE 13. FINAL RINSE PLUMBING ASSEMBLY



FINAL RINSE PLUMBING ASSEMBLY

ITEM NUMBER	PART NUMBER	DESCRIPTION	QTY
1	7026	Strainer – Line, ¾ in.	1
	13385	Screen – Line Strainer	1
	17506	O-Ring – Line Strainer	1
	17507	Cap – Line Strainer	1
2	14250	Nipple – Brass, ¾ x 1 ½ in.	4
3	7508	Tee – Brass, ¾ x ¾ x ¼ in.	1
4	4082	Cock – Gauge, ¼ in.	1
5	7116	Plug – NPT Pipe, ¼ in.	1
6	7917	Gauge – Pressure (Optional)	1
7	12488	Valve - Solenoid	1
	75606	Kit – Solenoid Valve Repair	1
	75784	Coil - Solenoid Valve	1
8	13608	Union – Brass ¾ in.	1
9	7032	Elbow, ¾ in. x 90°	1
10	5913	Breaker – Vacuum, ¾ in.	1
	14835	Kit – Vacuum Breaker Repair, ¾ in.	1
11	7033	Elbow – Street, ¾ in. x 90°	1
12	7127	Tube - Thermometer	1
13	13441	Elbow – NPT, ¾ x ½ in. x 90°	1
14	7802	Thermometer	1
15	7031	Nipple – NPT Close, ½ in.	1
16	2292	Gasket	1
17	13399	Tee & Plate Assembly	1
18	7118	Screw – Stainless Steel Hex Head Mach, ¼ in.	4
19	7007	Lock Washer, 1/4 in.	4
20	7146	Nut – Hex, ¼-20	4
21	20446	Pipe - Connecting	1
22	12477	Elbow - ½ in. x 90°	1
23	20431	Pipe – Upper & Lower Rinse	1
23A	20432	Pipe – Upper & Lower Rinse, X-Wide Tanks	1
24	20920	Nozzle – Upper Rinse, Single Tank w/ or w/o Prewash	4
24A	20430	Nozzle – Lower Rinse, Single Tank w/ or w/o Prewash	4
24B	97185	Nozzle – Upper & Lower Rinse, All Low Temp. Units.	8
25	20920	Nozzle – Upper Rinse, Multi-Tank Units.	4
25A	20920	Nozzle – Upper & Lower Rinse, X-Wide Tanks.	12
26	20920	Nozzle – Lower Rinse, Multi-Tank Units.	4
27	8709	Cap – Stainless Steel Pipe.	2
28	7580	Connector, 3/8 in. x 90°	1
29	96810	Wire – Red Stranded, 16 Ga.	1
30	7589	Conduit – Liquid, 3/8 in. (Per/Ft)	1
31	7916	Valve – Pressure Reducing, ¾ in. (Optional)	
32	14250	Nipple – Brass, ¾ in. x 1 ½ in.	

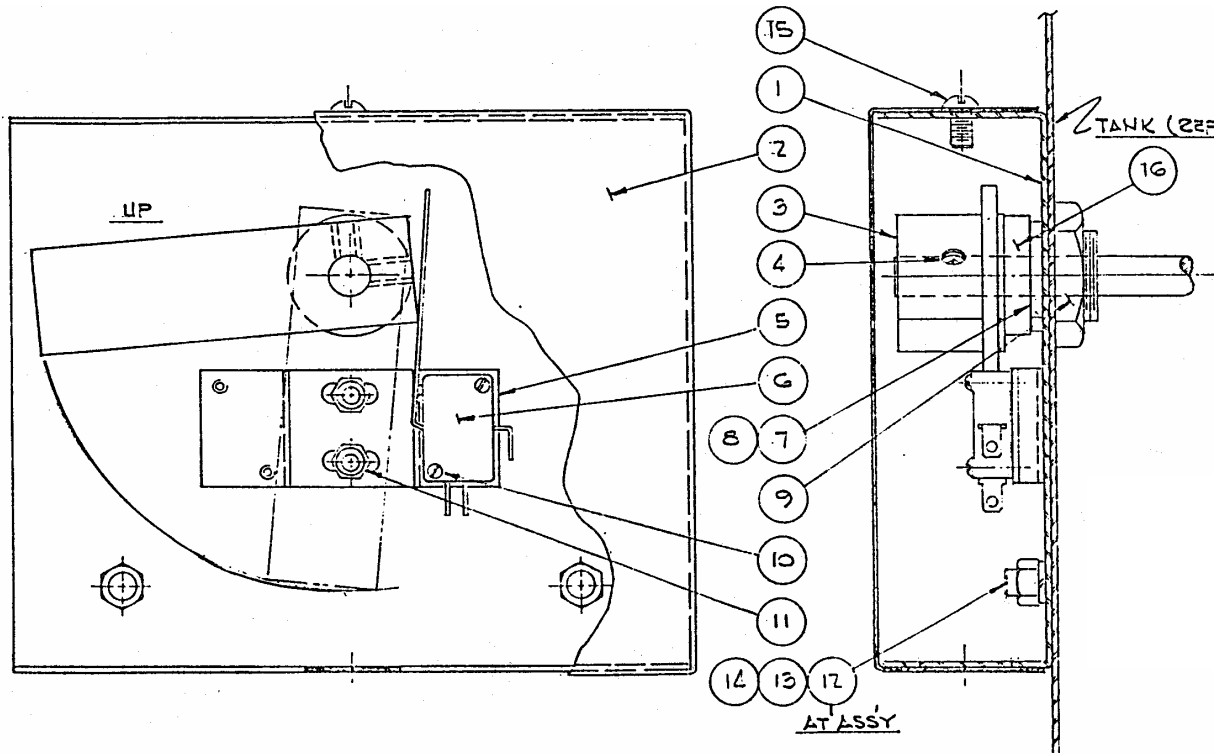
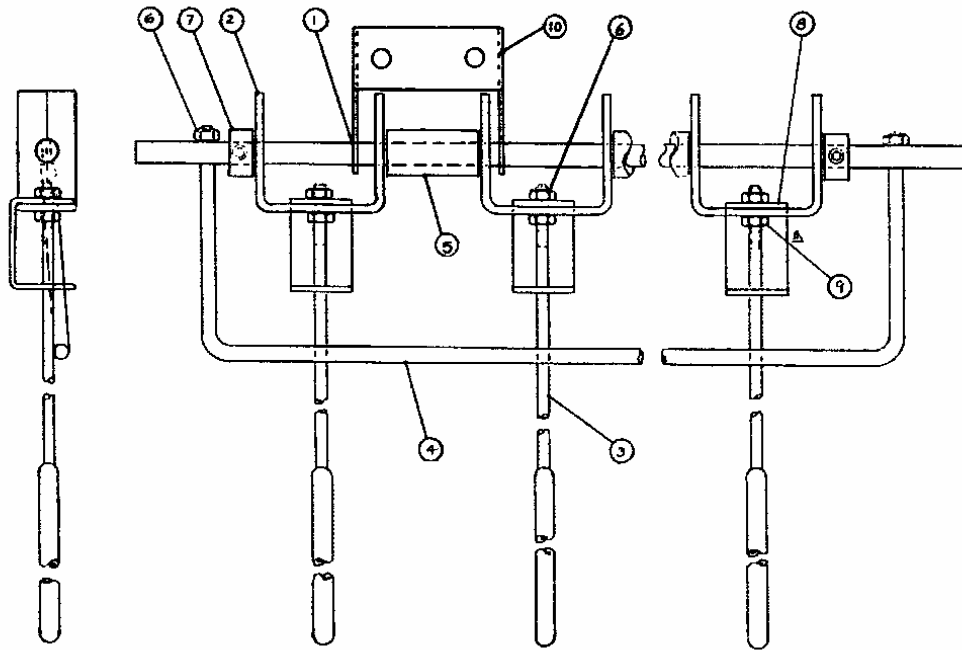


FIGURE 14. FINAL RINSE ECONOMIZER

ITEM NO.	PART NO.	DESCRIPTION	QTY. REQ.
1	71492	Mtg. Bracket Weldment	1
2	71488	Enclosure	1
3	71489	C' Weight	1
4	5991	Set Screw	2
5	71490	Switch Mtg. Bracket	1
6	70444	Switch	1
7	5745	Bushing	1
8	8045	O-Ring	1
9	8087	Lock-Nut	1
10	709469	Round Head Screw	2
11	16732	Elastic Stop Nut	2
12	13091	Weld-Stud	2
13	7007	Lock-Washer	2
14	7146	Hex Head Nut	2
15	8131	Rd. Head Mach. Screw	1
16	14084	Spacer (Roller)	1

FIGURE 15. TRIP GATE ASSEMBLY

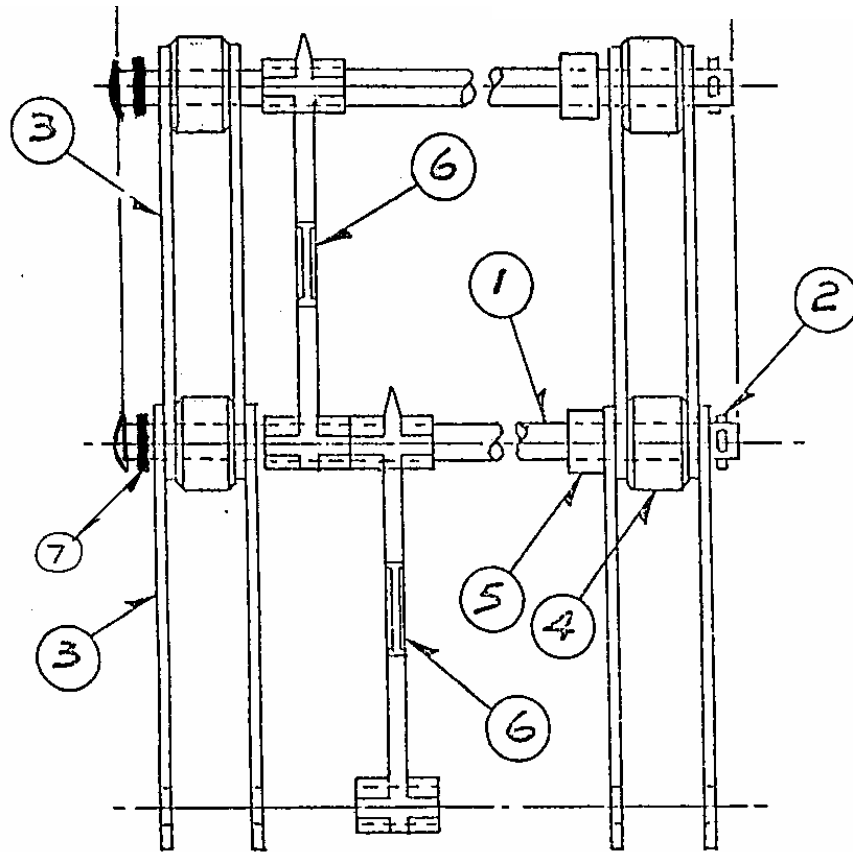


STANDARD TRIP GATE ASSEMBLY

Part No. 71622

ITEM	PART NO.	DESCRIPTION	QTY
1	71502	Shaft	1
2	72442	Trip Rod Hanger	4
3	72443	Trip Rod	4
	75884	Trip Rod – 6" Longer for Tall Machines	4
4	71507	Actuator	1
5	71503	Spacer	3
6	05989	Elastic Stop Nut	6
7	07905	Collar	2
8	72463	Trip Rod Brace	4
9	07284	Hex Nut	4
<p>X-WIDE TRIP GATE ASSEMBLY</p> <p>Part No. 71505</p>			
1	71501	Trip Gate Assembly	1
2	72442	Shaft	6
3	72443	Trip Rod Hanger	6
	75884	Trip Rod	6
4	71497	Trip Rod – 6" Longer for Tall Machines	1
5	71503	Actuator	5
6	05989	Spacer	8
7	07905	Elastic Stop Nut	2
8	72463	Collar	6
9	07284	Trip Rod Brace	6
10	72612	Center Support	1

FIGURE 16. CONVEYOR ASSEMBLY

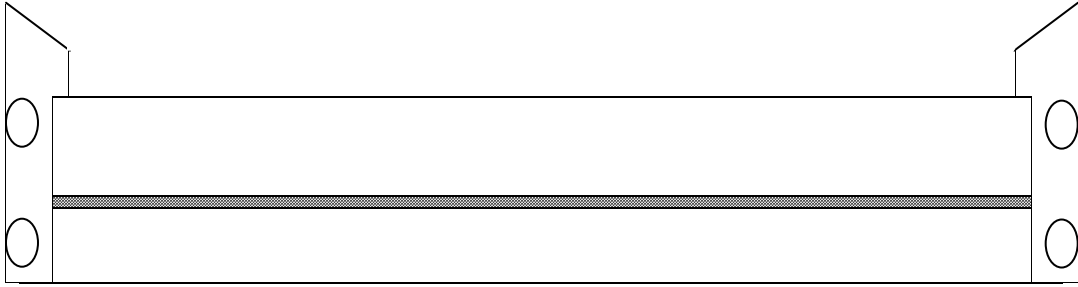


ITEM NO.	PART NO.	DESCRIPTION	QUANTITY REQ.	
			STD	X- WIDE
1	W-1-73625	1/2" DIAMETER CONVEYOR ROD	2	0
1	W-1-95723	1/2" DIAMETER CONVEYOR ROD	0	2
2	W-1-7195	COTTER PIN	2	2
3	W-1-95722	SIDE BAR	8	8
4	W-1-95721	ROLLER	4	4
5	W-0-95720	SPACER	2	2
6*	W-2-20621	UNDERSLUNG LINK - NYLON	16	25
7	W-1-95816	WASHER	2	2

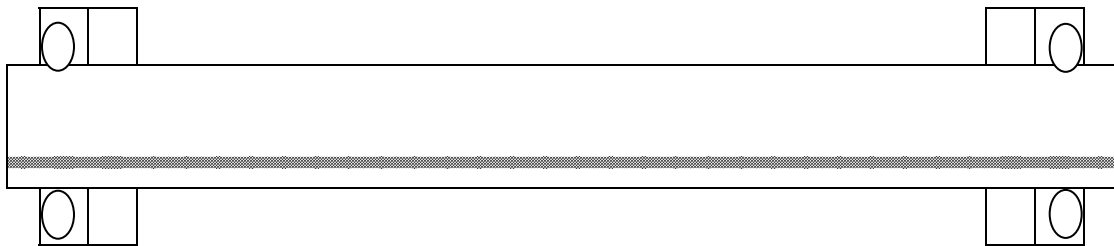
Quantities shown are for 8.75" length of conveyor

* W-0-77191 20621 LINKS - CARTON OF 25

FIGURE 17. TRACKS



Upper Track 1, 1A, 1B,1C



Lower Track 2, 2A, 2B, 2C

TRACKS

ITEM	PART NO.	DESCRIPTION	MODULE	QTY
1	98851	Flight Track, Upper	P	2
1A	98852	Flight Track, Upper	E	2
1B	98853	Flight Track, Upper	L	2
1C	98854	Flight Track, Upper	M	2
2	98866	Flight Track, Lower	P	2
2A	98867	Flight Track, Lower	E	2
2B	98868	Flight Track, Lower	L	2
2C	98869	Flight Track, Lower	M	2

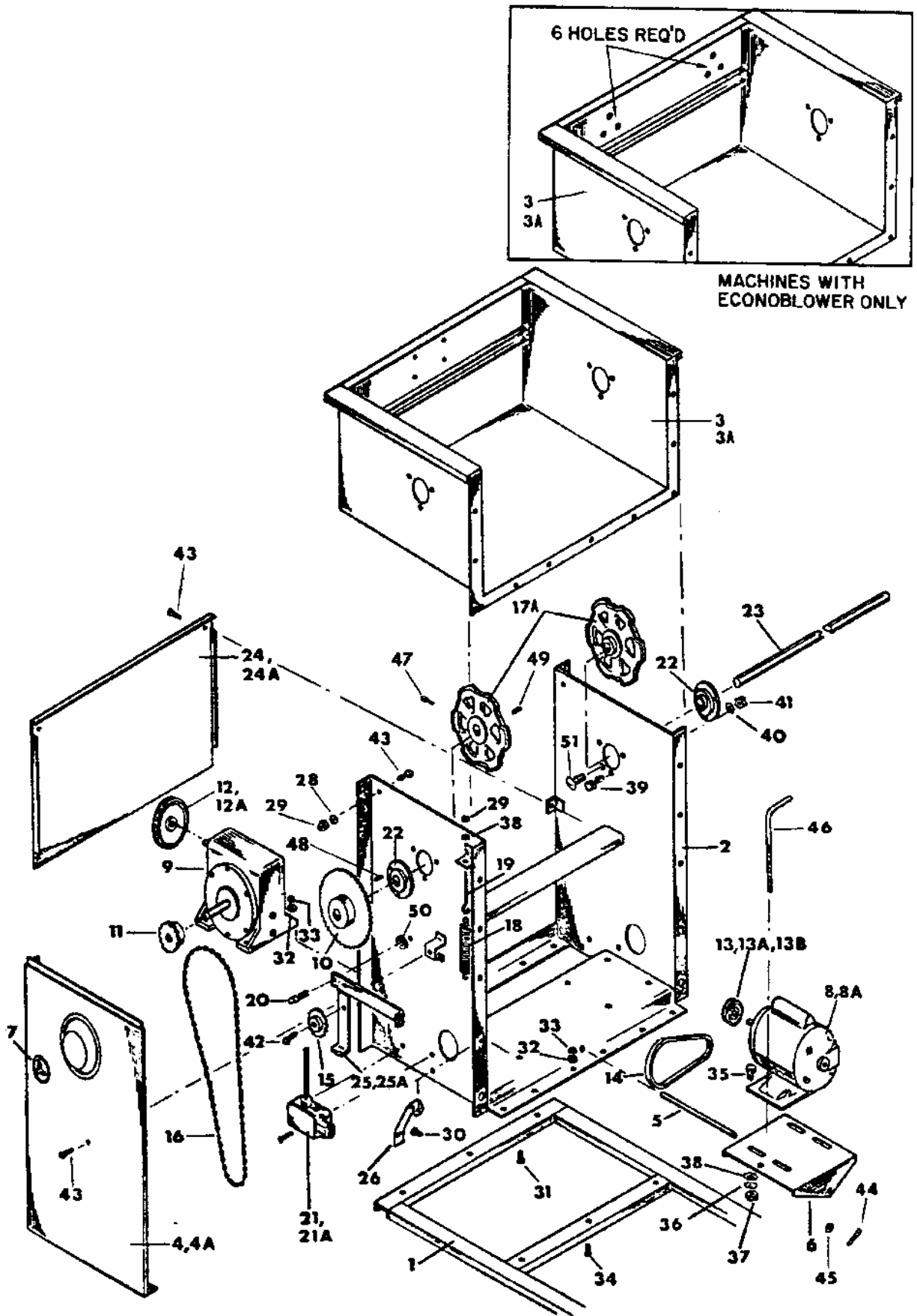


FIGURE 18. TYPE "B" DRIVE ASSEMBLY

TYPE "B" DRIVE ASSEMBLY

ITEM NO.	PART NO.		DESCRIPTION	QTY. REQ.
	Standard	X-Wide		
1	14630	14631	Unload section support weldment 45" Long	1
2	14632	14633	Drive Support Weldment	1
3	14671	14670	Drive Section Tank Weldment	1
4	14666	←	Drive Section Panel Weldment L.H.	1
4A	14667	←	Drive Section Panel Weldment R.H.	1
5	14751	←	Motor Base Pivot Rod	1
6	14663	←	Motor Base	1
7	14842	←	Name Plate	2
8	11314	←	½ H.P. 3 Phase, 60 Cycle 230/460 Volt Motor	1
9	75445	←	Gear Reducer - Changed Serial No. Suffix 1 P	1
	10782 *	←	<i>Gear Reducer (Obsolete, see below *)</i>	
10	11327	←	# 40B 48 Tooth Sprocket	1
10A	16251	←	S/S Key ¼ x ¾ Chain Sprocket	1
11	14757	←	#40B 17 Tooth Sprocket	1
12	75747	←	V-Pulley (Use with 75445 reducer)	1
	14752	←	V-Pulley 5.25 O.D. (still available for use with 10782 reducer)	1
13	20468	←	V-Pulley 2.75 O.D.	1
14	15973	←	V-Belt 4L270	1
15	13739	←	Idler Sprocket	1
16	76265	←	# 40 Roller Chain	1
16A	15985	←	#40 Roller Offset Link Assy.	1
16B	16195	←	# 40 Chain Connecting Link	
17	7015	←	6 Tooth Sprocket	2
18	14758	←	Extension Spring	1
19	14759	←	Wire Eye Bolt	1
20	14760	←	Shoulder Screw	1
21	14761	←	Electric Switch L.H.	1
21A	10039	←	Electric Switch R.H.	1
22	15693	←	Flange Ball Bearing	2
23	14672	14673	Head Shaft (Standard Width)	1
24	14749	14750	End Panel	1
25	14674	←	Lever Arm L.H.	1
25A	14794	←	Lever Arm R.H.	1
26	14676	←	Guide	1
27	9677	←	¼-20 x ¾" LG. H.H.M.S. S/S	6
28	7007	←	¼ Split Lock washer	22
29	7146	←	1/4/20 Hex Nut	22
30	7118	←	¼-20 x ½" LG. H.H.M.S. S/S	12
31	7657	←	3/8-16 x 1 ¼ LG. H.H.M.S. Cad. Plated	4
32	17245	←	3/8 Split Lock washer Cad. Plated	10
33	14785	←	3/8-16 Hex Nut Cad. Plated	10
24	17230	←	3/8-16 x 1" LG. H.H.C.S. Cad. Plated	10
35	14784	←	5/16-18 x ¾" LG. H.H.M.S. Cad. Plated	4
36	7235	←	5/16 Split Lock washer Cad. Plated	4
37	14786	←	5/16 Hex Nut Cad. Plated	4
38	15884	←	5/16 I.D. Flat Washer Cad. Plated	6
39	7621	←	5/16-18 x ¾" H.H.M.S. S/S	6

* When replacing item # 9 (10782 - Gear Reducer) order Gear Reducer Conversion Kit: [76266](#) for Standard Width - includes Gear Reducer [75445](#)
[76267](#) for X-Wide - includes Gear Reducer [75445](#)

TYPE "B" DRIVE ASSEMBLY

ITEM NO.	PART NO.		DESCRIPTION	QTY. REQ.
	Standard	X-Wide		
40	17235	←	5/16 Split Lock Washer	4
41	14786	←	5/16-18 Hex Nut Cad. Plated	4
42	14755	←	½-13 x 1" LG. H.H.M.S. S/S	1
43	7713	←	¼-20 x 3/8" LG. Slotted F.H.M.S. S/S	10
44	7195	←	3/32" Diameter x ¾" LG. Cotter Pin S/S	2
45	9978	←	13/16" I.D. x 1" O.D. x 1/16" Thick Flat Washer	2
46	10837	←	V-Belt Tightening Rod	1
47	15935	←	5/16-18 x ¾" SQ. HD. Set Screw S/S	1
48	16251	←	¼ x ¾" S/S Key for Chain Sprocket	1
49	16252	←	¼ x 5/8" Key for Conveyor Sprocket	2
50	18422	←	Flat Washer	1
51	7850	←	¼-20 x ½" LG. Truss HD. Machine Screw	7

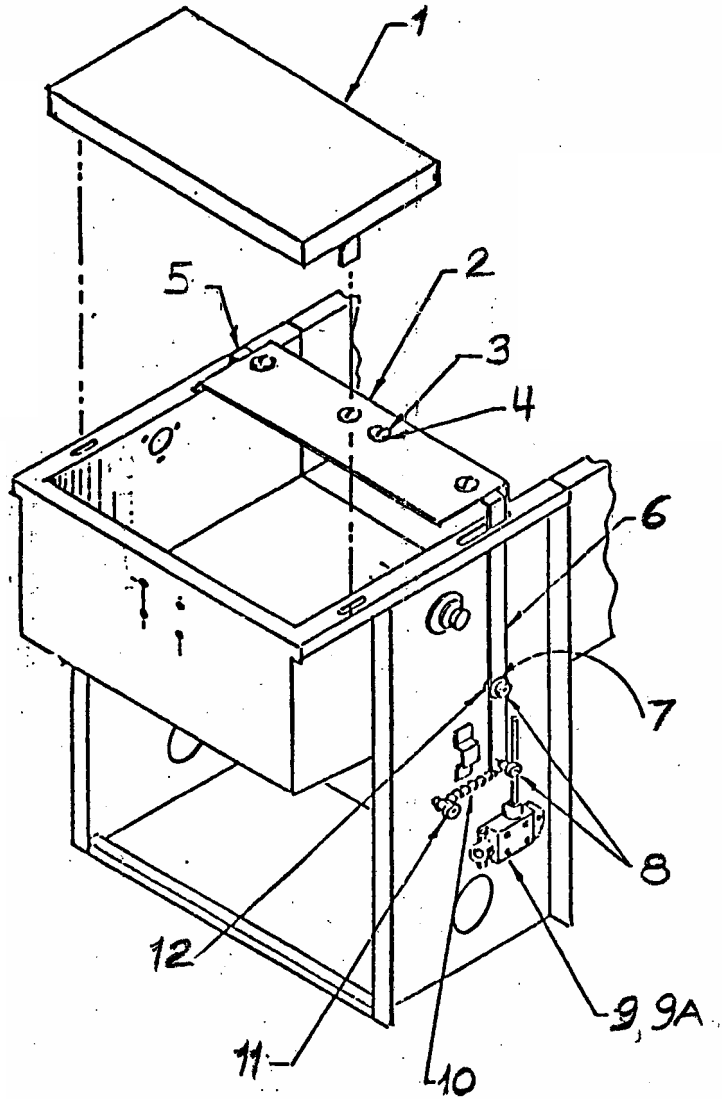


FIGURE 19. CONVEYOR STOP MECHANISM

ITEM NO.	PART NO.	DESCRIPTION	QTY REQ.
1	W-3-20861	Stacking Shelf – Standard	1
	W-3-20860	Stacking Shelf – X-Wide	
2	W-1-20868	Angle	
3	W-1-95308	¼ x ¾" Large Truss Head screw	
4	W-1-7282	Nylock Nut	
5	W-2-20869	Arm	
6	W-2-20870	Arm	
7	W-1-10019	5/16" Flat Washer	
8	W-0-95022	Shoulder Screw	
9	W-0-14761	Switch from Right to Left Machine	
9A	W-1-10039	Switch for Left to Right Machine	
10	W-0-95685	Spring	
11	W-1-5846	Shoulder Screw	
12	W-1-7313	¼" Flat Washer	

Right to Left Operation Shown

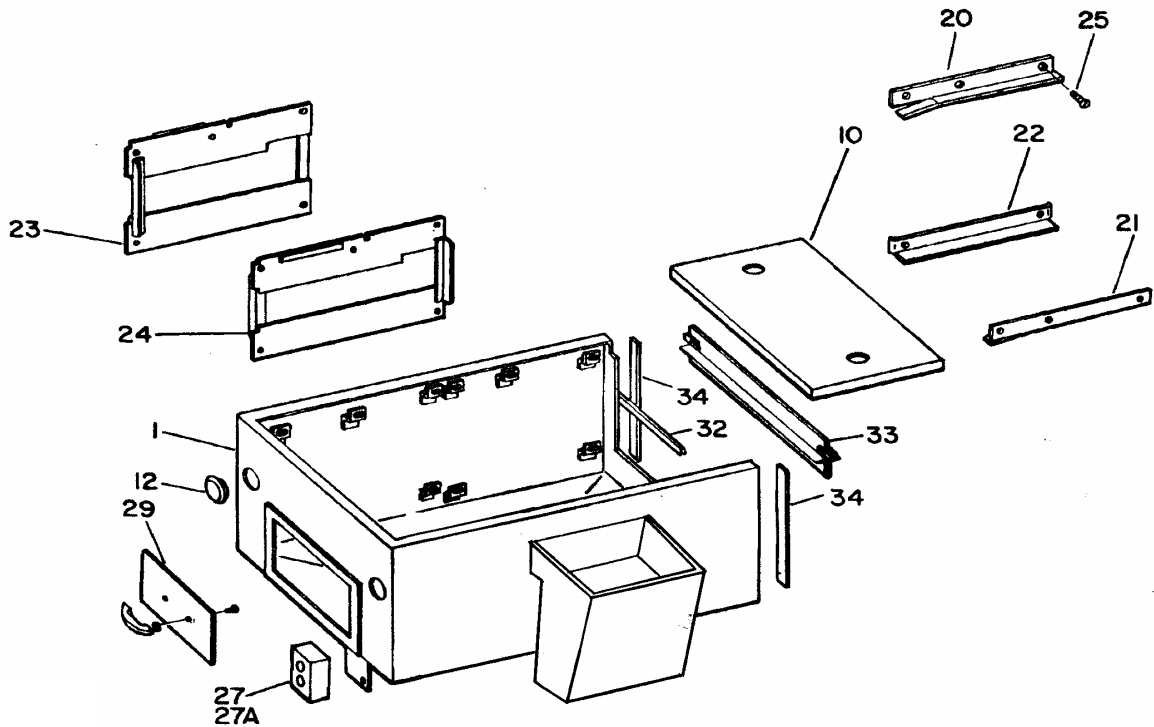


FIGURE 20. LOAD SECTION

ITEM	PART NO.	DESCRIPTION	QTY
1	9049	Load Section Weldment, Std Width	1
1A	9050	Load Section Weldment, Xtra Wide	1
10	7187	Stacking Shelf – Std. Width	1
10A	7185	Stacking Shelf – Xtra Wide	1
12	7123	Plug	2
20	16338	Upper Track, L.H.	1
21	16339	Upper Track, R.H.	1
22	16340	Lower Track, R & L.H.	2
23	7003	Tailshaft Support Plate, L.H.	1
24	7002	Tailshaft Support Plate, R.H.	1
25	7713	¼-20 x 5 1/16" lg. Flat Head Mach. Screw, S/S	20
27	16422	Push Button Station	1
27A	18534	Remote Push Button Station Field Installation Kit	1
28	8778	¼-20 x ½" lg. Setscrew	2
29	4693	Lift Up Door (includes item)	1
32	12340	Formed "U" (Std. Width)	A/R
32A	12339	Formed "U" (Xtra Wide)	A/R
33	7835	Tank Splash Control Shield (Std. Width)	1
33A	7836	Tank Splash Control Shield (Xtra Wide)	1
34	7773	Vertical "U" Channel	2
37	18011	1 ½" Check Valve	A/R
Items Not Shown			
	18459	Scrap Basket	1
	8052	Adhesive Sealant (Silastic RTV 732 Clear – By Dow Corning)	A/R

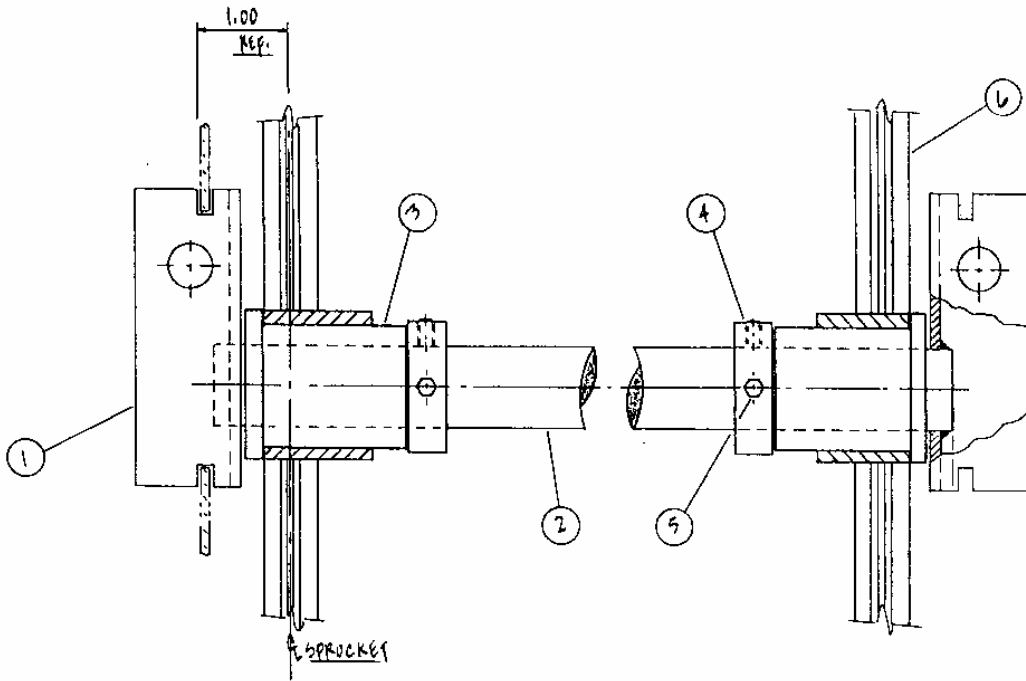
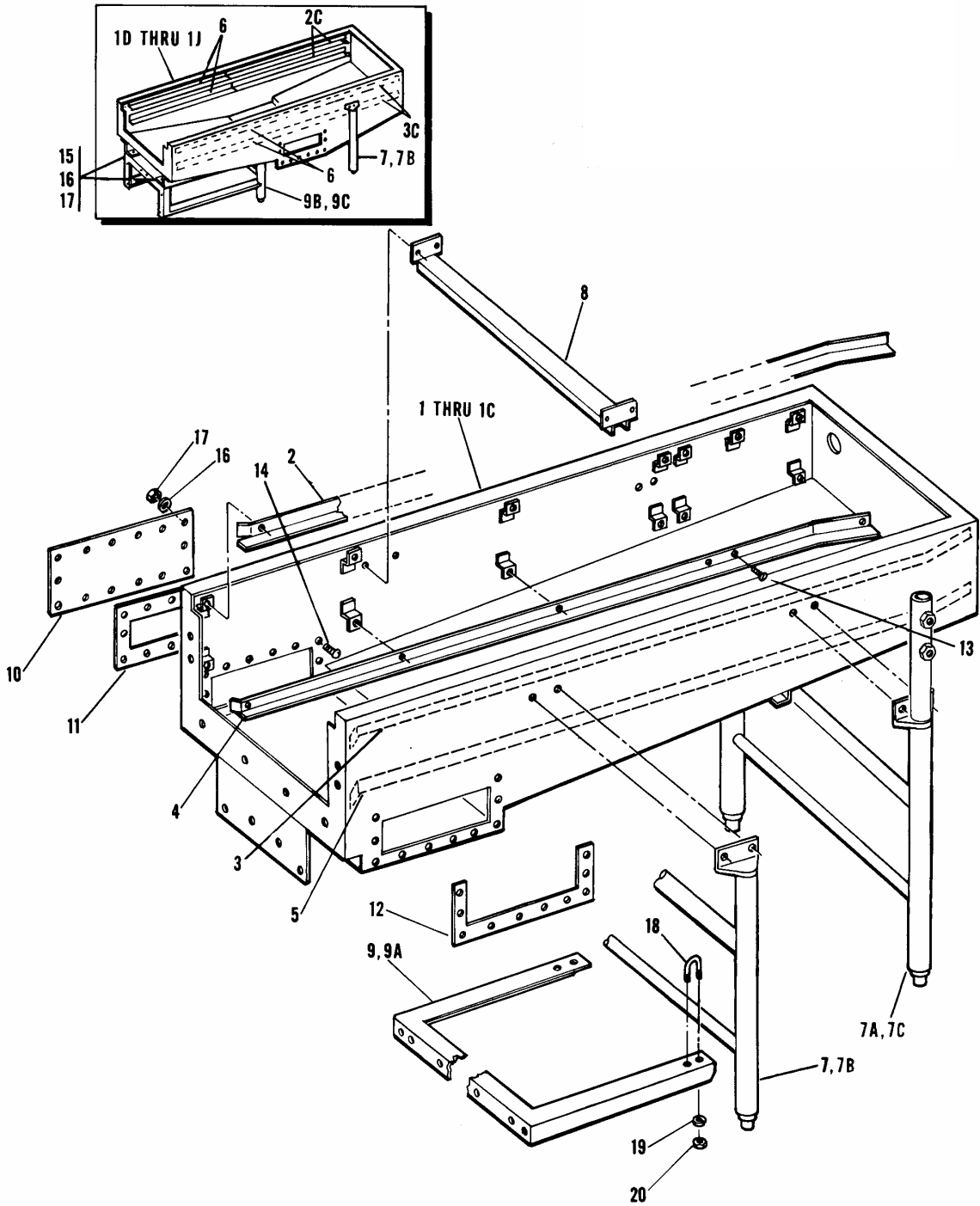


FIGURE 21. SPROCKET SHAFT ASSEMBLY

ITEM NO.	PART NO.	DESCRIPTION	QTY REQ.
1	W-2-74796	Retainer	1
2	W-2-74838	Shaft Weldment – Standard width	1
	W-2-74837	Shaft Weldment – X-Wide	1
3	W-0-74798	Bushing	2
4	W-1-74805	Lock -Ring	2
5	W-1-8345	Set Screw	4
6	W-2-74835	Disk Weldment	2

FIGURE 22. EXTENDED LOAD SECTION



ITEM NO.	PART NO.	DESCRIPTION	QTY. REQ.
1	W-0-13879	4 Ft Tank w/mts (STD))	1
1A	W-0-13880	4 Ft Tank w/mts (XTRA))	1
1B	W-3-17554	6 Ft Tank w/mts (STD))	1
1C	W-3-17555	6 Ft Tank w/mts (XTRA))	1
1D	W-3-17556	9 Ft Tank w/mts (STD))	1
1E	W-3-17557	9 Ft Tank w/mts (XTRA))	1
1F	W-3-17499	7 Ft Tank w/mts (STD))	1
1G	W-3-17503	7 Ft Tank w/mts (XTRA))	1
1H	W-3-17501	9 Ft Tank w/mts (STD))	1
1J	W-3-17504	9 Ft Tank w/mts (XTRA))	1
1K	W-3-17502	12 Ft Tank w/mts (STD))	1
1L	W-3-17505	12 Ft Tank w/mts (XTRA))	1
2	W-1-13348	R.H. Upper Track - used with item 1 & 1A	1
2A	W-2-17544	R.H. Upper Track - used with item 1B & 1C	1
2B	W-2-17489	R.H. Upper Track - used with item 1D, 1E, 1H & 1J	1
2C	W-2-16511	R.H. Upper Track - used with item 1F & 1G	1
2D	W-2-16813	R.H. Upper Track - used with item 1K & 1L	1
3	W-1-13364	L.H. Upper Track - used with item 1 & 1A	1
3A	W-2-17547	L.H. Upper Track - used with item 1B & 1C	1
3B	W-2-17490	L.H. Upper Track - used with item 1D, 1E, 1H & 1J	1
3C	W-2-16513	L.H. Upper Track - used with item 1F & 1G	1
3D	W-2-16814	L.H. Upper Track - used with item 1K & 1L	1
4	W-1-13444	R.H. Lower Track - used with item 1 & 1A	1
4A	W-2-17456	R.H. Lower Track - used with item 1B & 1C	1
4B	W-2-17491	R.H. Lower Track - used with item 1D, 1E, 1H & 1J	1
4C	W-2-16512	R.H. Lower Track - used with item 1F & 1G	1
4D	W-2-16815	R.H. Lower Track - used with item 1K & 1L	1
5	W-1-13549	L.H. Lower Track - used with item 1 & 1A	1
5A	W-2-17545	L.H. Lower Track - used with item 1B & 1C	1
5B	W-2-17492	L.H. Lower Track - used with item 1D, 1E, 1H & 1J	1
5C	W-2-16514	L.H. Lower Track - used with item 1F & 1G	1
5D	W-2-16816	L.H. Lower Track - used with item 1K & 1L	1
6	W-2-16812	Tank Track Extension - used with item 1K & 1L	4
7	W-2-16817	Tank Leg Weldment - used with item 1, 1B, 1D, 1F, 1H & 1K	1,2 or 3
7A	W-2-17521	Tank Leg Weldment - used with overshelf - std. width	1,2 or 3
7B	W-2-16818	Tank Leg Weldment - used with item 1A, 1C, 1E, 1G, 1J & 1L	1,2 or 3
7C	W-2-17522	Tank Leg Weldment - used with overshelf - xtra wide	1,2 or 3
8	W-2-16819	Tank Stiffener - used with item 1B, 1D, 1F, 1H, & 1K	1 or 2
8A	W-2-16820	Tank Stiffener - used with item 1C, 1E, 1G, 1J & 1L	1
9	W-2-17560	Frame-to-leg Tie Assy. - used with item 1, 1B, 1D	1
9A	W-2-17561	Frame-to-leg Tie Assy. - used with item 1A, 1C, 1E	1
9B	W-3-17477	Tank Support Weldment - used with item 1F, 1G & 1K	1
9C	W-3-17478	Tank Support Weldment - used with item 1G, 1J & 1L	1
10	W-1-16730	Cover - Tank Opening used with all tanks	1
11	W-2-17656	Gasket - Tank Opening Cover - used with all tanks	1
12	W-2-17512	Gasket - Trough or Flushveyor Attachment - used with all tanks	1
13	W-1-8147	1/4-20 x 1/2" lg. Flat Hd. Mach. Screw S/S	A/R
14	W-1-8783	3/8-16 x 3/4" lg. Truss Hd. Slotted Mach. Screw S/S	A/R
15	W-1-8148	3/8-16 x 3/4" lg. Hex Hd. Mach. Screw S/S	A/R
16	W-1-7524	3/8" Split Lockwasher S/S	A/R
17	W-1-5998	3/8-16" Hex Nut S/S	A/R
18	W-1-16930	"U" Clamp for pipe 1" I.D.	2
19	W-1-7007	1/4" Split Lockwasher S/S	2
20	W-1-7146	1/4-20 Hex Nut S/S	2

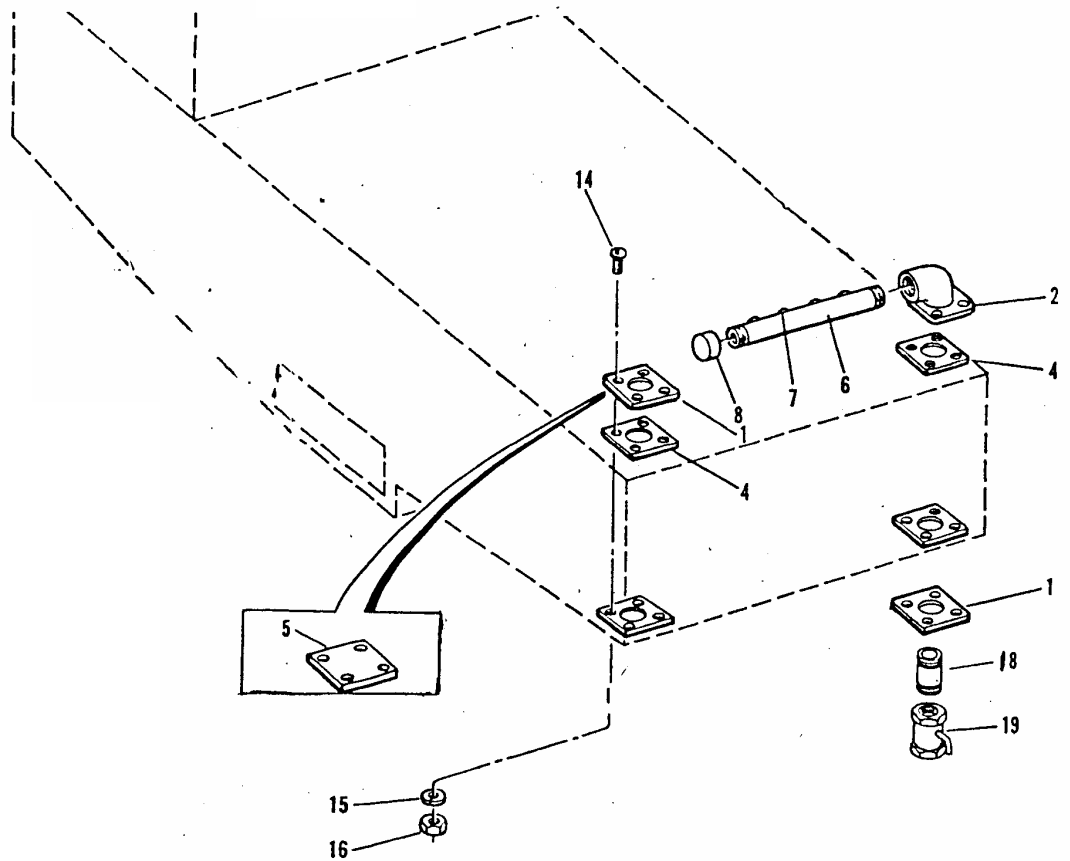
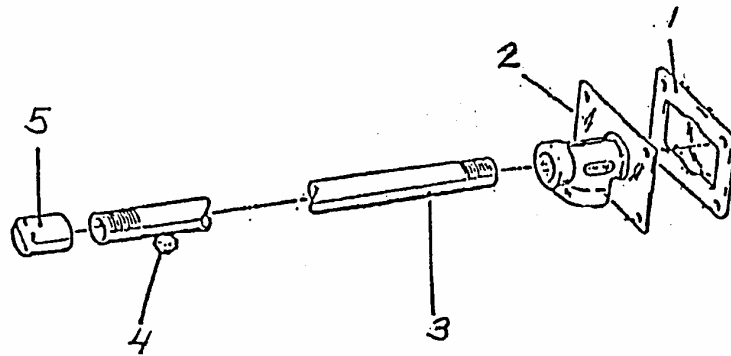


FIGURE 23. LOAD SECTION FLUSHING SECTION

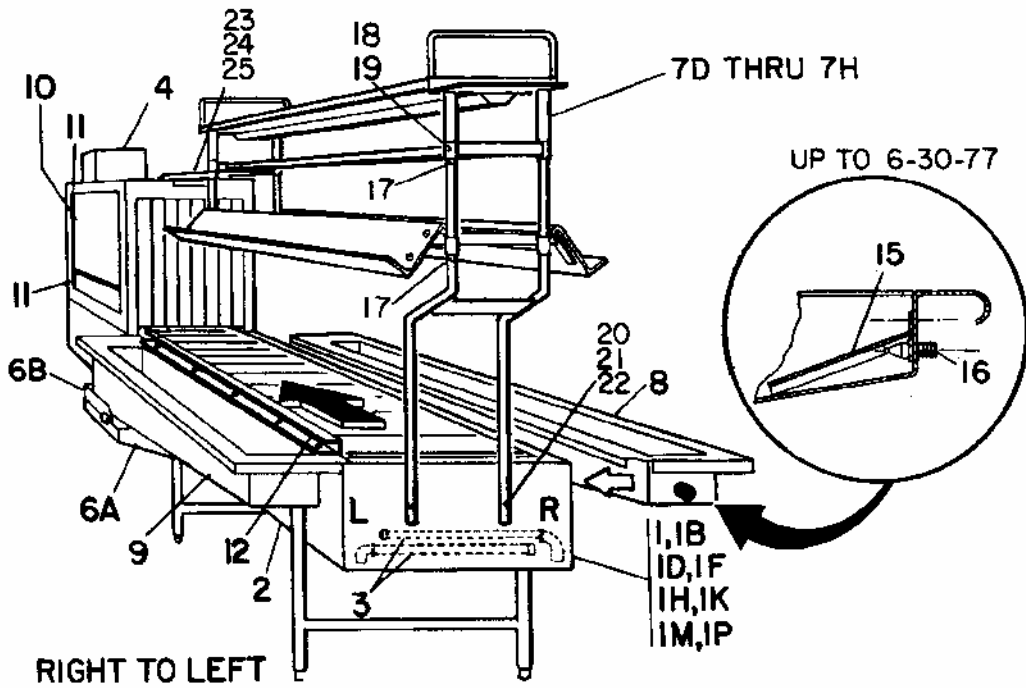
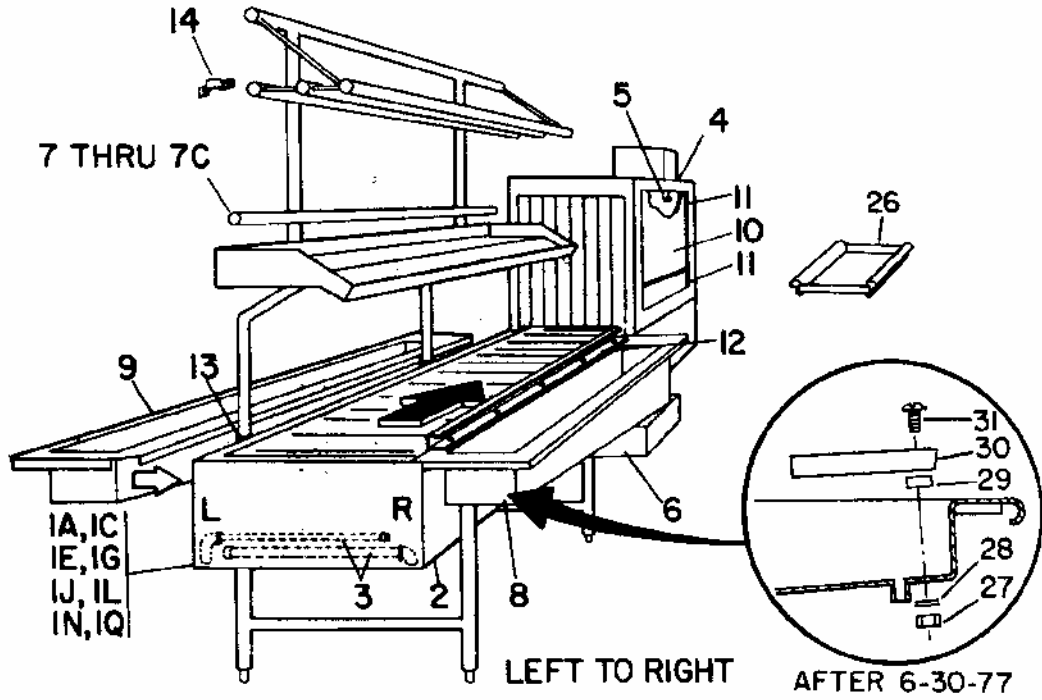
ITEM NO.	PART NO.	DESCRIPTION	QTY. REQ.
1	W-1-16795	BACK-UP PLATE	1
2	W-1-16796	FLUSH INLET WELDMENT	1
4	W-1-16798	FLANGE GASKET	2
5	W-1-17563	COVER PLATE	1
6	W-1-16799	FRESH WATER FLUSHING PIPE	1
7	W-1-8231	NOZZLE	7
8	W-1-7121	1/2" N.P.T. PIPE CAP S/S	1
14	W-1-8491	1/4-20 X 5/8" LG. TRUSS HD. MACH. SCREW S/S	8
15	W-1-7007	1/4" SPLIT LOCKWASHER S/S	8
16	W-1-7146	1/4"-20 HEX NUT S/S	8
18	W-0-14507	1/2" X 2" BRASS NIPPLE	1
19	W-0-16019	1/2" BALL VALVE	1

FIGURE 24. UPPER FLUSH SPRAY LOAD END



ITEM NO.	PART NO.	DESCRIPTION	QTY. REQ.
1	2292	GASKET	1
2	13399	TEE & PLATE ASSEMBLY	1
3	20431	PIPE - UPPER	1
4	20920	NOZZLE - UPPER	4
5	8709	CAP - STAINLESS STEEL PIPE	1

FIGURE 22. EXTENDED LOAD SECTIONS, FLUSHER HOODS & PLUMBING



EXTENDED LOAD SECTIONS, FLUSHER HOODS & PLUMBING

ITEM NO.	PART NO.	DESCRIPTION	QTY. REQ.
1	W-0-13355	4 Ft Loading Sect. Assy. STD. (includes items 2 & 3)	
1A	W-0-13356	4 Ft Loading Sect. Assy. XTRA (includes items 2A & 3A)	
1B	W-0-17578	6 Ft Loading Sect. Assy. STD. (includes items 2 & 3) W/O	
1C	W-0-17579	6 Ft Loading Sect. Assy. XTRA (includes items 2A & 3A) Pre-	
1D	W-0-17580	9 Ft Loading Sect. Assy. STD. (includes items 2B & 3) flusher	
1E	W-0-17581	9 Ft Loading Sect. Assy. XTRA (includes items 2C & 3B)	
1F	W-0-17582	7 Ft Loading Sect. Assy. STD. - R to L (includes items 2D, 3B, 4)	
1G	W-0-17583	7 Ft Loading Sect. Assy. STD. - L to R (includes items 2D, 3B, 4A)	
1H	W-0-17584	7 Ft Loading Sect. Assy. XTRA - R to L (includes items 2E, 3C, 4B)	
1J	W-0-17585	7 Ft Loading Sect. Assy. XTRA - L to R (includes items 2E, 3C, 4C)	
1K	W-0-17586	9 Ft Loading Sect. Assy. STD. - R to L (includes items 2F, 3B, 4D)	
1L	W-0-17587	9 Ft Loading Sect. Assy. STD. - L to R (includes items 2F, 3B, 4E)	
1M	W-0-17588	9 Ft Loading Sect. Assy. XTRA - R to L (includes items 2G, 3C, 4B)	With
1N	W-0-17589	9 Ft Loading Sect. Assy. XTRA - L to R (includes items 2G, 3C, 4C)	Pre-
1P	W-0-17590	12 Ft Loading Sect. Assy. STD - R to L (includes items 2H, 3B, 4D)	flusher
1Q	W-0-17591	12 Ft Loading Sect. Assy. STD - L to R (includes items 2H, 3B, 4E)	
1R	W-0-17592	12 Ft Loading Sect. Assy. XTRA- R to L (includes items 2J, 3C, 4B)	
1S	W-0-17593	12 Ft Loading Sect. Assy. XTRA- L to R (includes items 2J, 3C, 4C)	
2	W-0-13879	4 Ft Tank Assy. Std. (part of item 1 - see fig. 33 for brkdw)	1
2A	W-0-13880	4 Ft Tank Assy. Xtra (part of item 1A - see fig. 33 for brkdw)	1
2B	W-0-17568	6 Ft Tank Assy. Std. (part of item 1B - see fig. 33 for brkdw)	1
2C	W-0-17569	6 Ft Tank Assy. Xtra (part of item 1C - see fig. 33 for brkdw)	1
2D	W-0-17570	9 Ft Tank Assy. Std. (part of item 1D - see fig. 33 for brkdw)	1
2E	W-0-17571	9 Ft Tank Assy. Xtra (part of item 1E - see fig. 33 for brkdw)	1
2F	W-0-17572	7 Ft Tank Assy. Std. (part of item 1F & 1G - see fig. 33 for brkdw)	1
2G	W-0-17573	7 Ft Tank Assy. Xtra (part of item 1H & 1J - see fig. 33 for brkdw)	1
2H	W-0-17574	9 Ft Tank Assy. Std. (part of item 1K & 1L - see fig. 33 for brkdw)	1
2J	W-0-17575	9 Ft Tank Assy. Xtra (part of item 1M & 1N - see fig. 33 for brkdw)	1
2K	W-0-17576	12 Ft Tank Assy. Std. (part of item 1P & 1Q - see fig. 33 for brkdw)	1
2L	W-0-17577	12 Ft Tank Assy. Xtra (part of item 1R & 1S - see fig. 33 for brkdw)	1
3	W-0-17538	Flushing System for 1, 1A, 1B & 1D (see fig. 34 for brkdw)	1
3A	W-0-17565	Flushing System for 1C & 1E (see fig. 34 for brkdw)	1
3B	W-0-17537	Flushing System for 1F, 1G, 1K, 1L, 1P & 1Q (see fig. 34 for brkdw)	1
3C	W-0-17564	Flushing System for 1H, 1J, 1M, 1N, 1R, 1S (see fig. 34 for brkdw)	1
4	No Number	Preflusher Assy. Refer to fig. 21 for selection	A/R
5	W-1-9689	Upper Door Retainer Assy.	1
6	W-2-17526	Waste Trough - Use w/disposer or basket	1
6A	W-2-16737	Trough Hopper - Use w/flushveyor or trough on opposite side	1
6B	W-2-18443	Splash Shield (part of item 6A).	1
7	W-4-17525	Overshelf - for 6 ft Load Sect. w/o preflusher one side	1
7A	W-0-18511	Overshelf - for 7 ft Load Sect. w/o preflusher one side	1
7B	W-4-16741	Overshelf - for 9 ft Load Sect. w/o preflusher one side	1
7C	W-4-17525	Overshelf - for 9 ft Load Sect. w/o preflusher one side	1
7D	W-4-16741	Overshelf - for 12 ft Load Sect. w/preflusher one side	1
7E	W-0-18086	Overshelf - Dual Side 101" lg. std. & xtra wide w/preflusher	1
7F	W-0-18087	Overshelf - Dual Side 65" lg. std. & xtra wide w/preflusher	1
7G	W-0-18088	Overshelf - Dual Side 41" lg. std. & xtra wide w/preflusher	1
7H	W-0-18209	Overshelf - Dual Side 65" lg. std. & xtra wide w/o preflusher	1
7J	W-0-18210	Overshelf - Dual Side 101" lg. std. & xtra wide w/o preflusher	1
7K	W-0-13347	Overshelf - Dual Side 42" lg. std. & xtra wide w/o preflusher	1
8	W-3-17510	** 6 Ft Wet Trough - L to R - for 6 ft Load Sect. w/o preflusher)	1
		& 9 ft Load Sect. w/preflusher)	1
8A	W-3-16719	** 9 Ft Wet Trough - L to R - for 9 ft Load Sect. w/o preflusher) Includes	1
		& 12 ft Load Sect. w/preflusher) Items	1
8B	W-3-17508	** 4 Ft Wet Trough - L to R - for 7 ft Load Sect. w/preflusher) 27 thru	1
9	W-3-17511	** 6 Ft Wet Trough - R to L - for 6 ft Load Sect. w/o preflusher) 31	1
		& 9 ft Load Sect. w/preflusher)	1

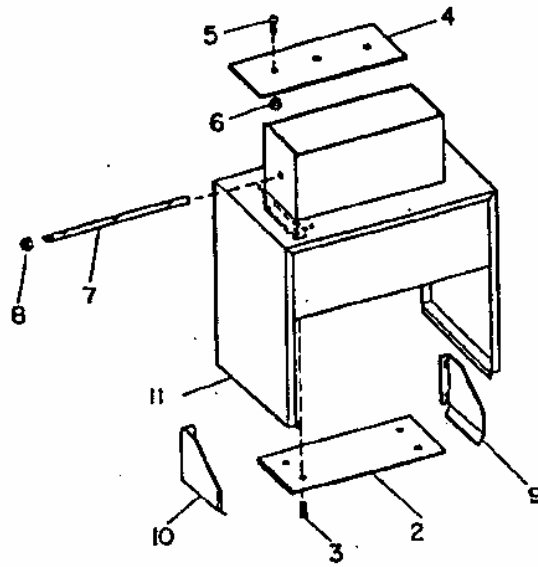
EXTENDED LOAD SECTIONS, FLUSHER HOODS & PLUMBING

ITEM NO.	PART NO.	DESCRIPTION	QTY. REQ.
9A	W-3-16720	** 9 Ft Wet Trough - R to L - for 9 ft Load Sect. w/o preflusher)	1
		& 12 ft. Load Sect. w/preflusher) Includes items	1
9B	W-3-17509	** 4 Ft Wet Trough - R to L - for 7 ft Load Sect. w/preflusher)	1
10	W-2-17753	Preflusher Door Assy	1
11	1-1122	Bumper Plug - Top & Bottom of Door	4
12	W-2-17786	Tray Retainer - for 48" lg. Trough	1
12A	W-2-17787	Tray Retainer - for 72" lg. Trough	1
12B	W-2-17788	Tray Retainer - for 108" lg. Trough	1
13	W-1-16224	Nylon drip ring (used w/all overshelves)	A/R
14	W-0-17789	Overshelf Clamp	A/R
15	W-1-18260	Water Deflector	1
16	W-1-17516	Trough Spout	1
17	W-0-18190	1/4 Dia. x 1 3/4 lg. Roll Pin S/S	8
18	W-1-12930	3/8-16 x 1" lg. Hex Hd Screw S/S	4
19	W-1-7524	3/8" Split Lockwasher S/S	4
20	W-1-12574	5/16-18 Hex Nut S/S	2
21	W-1-7598	5/16" Split Lockwasher S/S	2
22	W-1-7621	5/16-18 x 3/4" lg. Hex Hd Screw S/S	2
23	W-1-7146	1/4-20 Hex Nut S/S	A/R
24	W-1-7007	1/4" Split Lockwasher	A/R
25	W-1-6491	1/4-20 x 5/8" lg Truss Hd Screw S/S	A/R
26	W-0-20571	Trough Scraper S/S for 6" wide trough (optional)	A/R
26	W-0-20479	Trough Scraper S/S for 8" wide trough (optional)	A/R
27	W-1-7146	1/4-20 S/S Hex Nut	2
28	W-1-7007	1/4-20 S/S Split Lockwasher	2
29	W-1-14082	Deflector Spacer	2
30	W-1-18560	Deflector	1
31	W-1-9665	1/4-20 x 1 1/4 S/S Truss Hd Screw	2

* Use Low Model Disposers (see fig. 67)
 ** Use Std Model Disposers (see fig. 67)

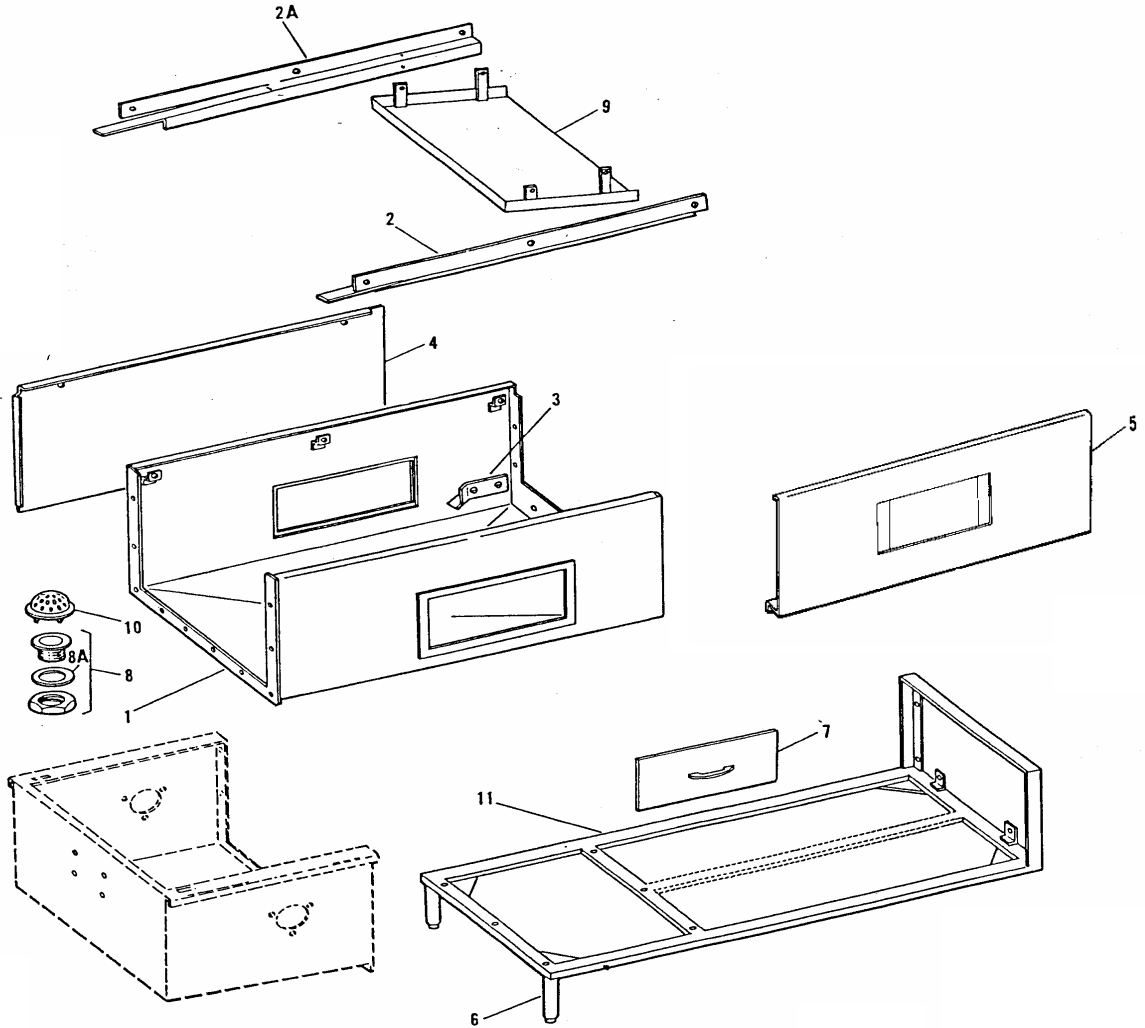
R to L) Direction of
 L to R) Conveyor Travel

FIGURE 23. HOOD AND VENT



ITEM	PART NO.	DESCRIPTION	QTY
2	08524	Condensate Baffle (Unload Hood Only)	1
3	07629	Self Tapping Screw 10-32	4
4	03935	Damper Plate	1
5	05986	6-32 x 3/4" long R.H.M.S.	3
6	05990	Elastic Stop Nut	3
7	03936	Rod, Damper	1
8	05988	Elastic Stop Nut	1
9	11984	Splash Guard L.H.	1
10	11986	Splash Guard R.H.	1
11	11449	Hood Weldment, Full Length	1

FIGURE 27: UNLOAD SECTION



ITEM	PART NO.	DESCRIPTION	QTY
1	14669	Unload Sect. Tank Weldment – 4 Ft. Lg.	1
2	16346	Upper Conveyor Track Weldment L.H. – 4 Ft. Lg.	1
2A	16345	Upper Conveyor Track Weldment R.H. – 4 Ft. Lg.	1
3	16344	Lower Conveyor Track Weldment L.H. – 4 Ft. Lg.	1
3A	16343	Lower Conveyor Track Weldment R.H. – 4 Ft. Lg.	1
4	14847	Back Panel R.H. – 4 Ft. Lg.	1
4A	14848	Back Panel L.H. – 4 Ft. Lg.	1
5	74194	Front Panel	1
6	8570	Foot Assembly	
7	4693	Lift Up Door Assembly	A/R
8	8558	Drain Cup with Locknut & Washer	2
8A	5292	Gasket (Only) For Drain Cup	1
9	14334	Diverter	1
10	9890	Beehive Strainer	1
11	14631	Unload Section Support Weldment – 4 Ft. Lg.	1

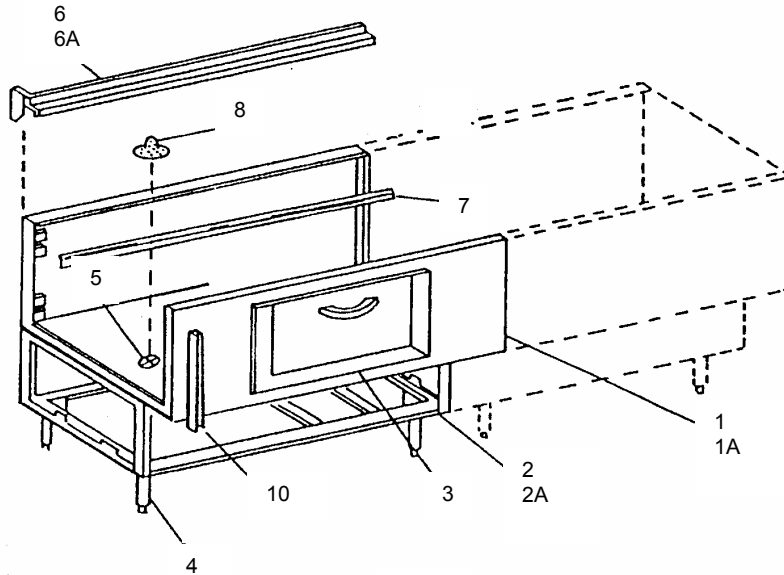
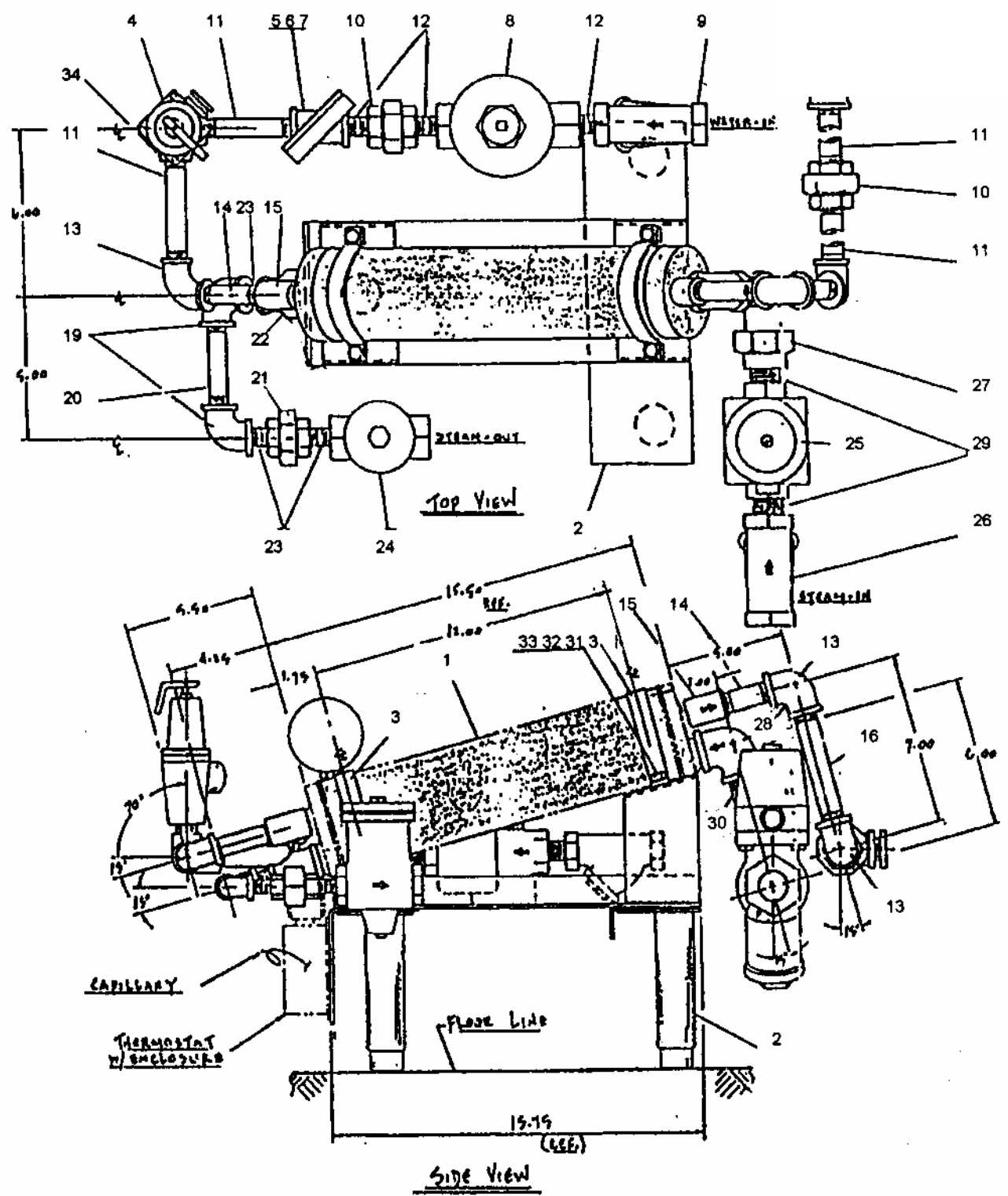


FIGURE 28. UNLOAD SECTION EXTENSIONS

ITEM	PART NO.	DESCRIPTION	QTY
1	09057	Extension Section Weldment, 24"	A/R
1A	09058	Extension Section Weldment, 36"	A/R
1B	09059	Extension Section Weldment, 48"	A/R
2	09067	Extension Support Weldment, 24"	A/R
2A	09068	Extension Support Weldment, 36"	A/R
2B	09069	Extension Support Weldment, 48"	A/R
3	04693	Lift-Up Door Assembly	1
4	08570	Foot Assembly	A/R
5	08558	Drain Cup, with Lock Nut & Gasket	1
5A	05292	Gasket only, For Drain Cup	A/R
6	16334	Conveyor Track Weldment, 24" Upper Filler	2
6A	16333	Conveyor Track Weldment, 36" Upper Filler	2
6B	16332	Conveyor Track Weldment, 48" Upper Filler	2
7	16328	Conveyor Track Weldment, 24" Lower Filler	2
7A	16327	Conveyor Track Weldment, 36" Lower Filler	2
7B	16326	Conveyor Track Weldment, 48" Lower Filler	2
8	09890	Beehive Strainer	1
<p>Not Shown: Fasteners listed below are used to secure extension tank to module & tank Support.</p>			
	07118	Hex Head Screw, S/S 1/4" -20 x 1/2" Long	18
	07146	Hex Nut, 1/4" - 20, S/S	18
	07007	Split Lockwasher, 1/4", S/S	18
	05997	Hex Head Screw, BLK. 3/8"-16 x 3/4" Long	18
	07115	Hex Nut, 3/8" -16, BLK.	18
	05994	Split Lockwasher, 3/8", BLK.	18

FIGURE 29. S-2 STEAM BOOSTER



S-2 STEAM BOOSTER ASSEMBLY

ITEM	PART NO.	DESCRIPTION	QTY.
1	73765	S-2 Heat Exchanger	1
2	73779	Stand	2
3	73776	Clamp	1
4	7918	Pressure Relief Valve -3/4"	1
5	4082	1/4" to 1/4" N.P.T. Gauge Cock	1
6	7508	3/4" x 3/4" x 1/4" Tee - Brass	1
7	7917	Pressure Gauge – 1/4"	1
8	7916	Pressure Relief Valve – 3/4"	1
9	7026	3/4" Strainer – Brass	1
10	13608	3/4" Union – Brass	2
11	10889	3/4" x 4" long Pipe – Brass	4
12	7509	3/4" Close Nipple – Brass	3
13	8219	3/4" x 90 Degree Elbow – Brass	3
14	14506	3/4" x 3-1/2" Long Pipe – Brass	2
15	8215	3/4" Coupling – Brass	2
16	13887	3/4" x 6" Long Pipe - Brass	1
17	12980	3/4" Tee – Brass	1
18	14203	3/4" To 3/8" Reducer Bushing – Brass	1
19	10029	1/2" x 90 Degree Elbow – Mal. Iron	2
20	13051	1/2" x 4" Long Pipe – Black Steel	1
21	11957	1/2" Union – Mal. Iron	1
22	72986	1" to 1/2" Bell Reducer – Mal. Iron	1
23	14824	1/2" x 2" Long Nipple – Black Steel	3
24	16877	Steam Trap – 1/2"	1
25	7919	Solenoid Valve – 1"	1
26	7921	1" Strainer – Mal. Iron	1
27	11955	1" x 90 Degree Union Elbow – Mal. Iron	1
28	11953	1" x 90 Degree Elbow – Mal. Iron	1
29	11954	1" Close Nipple – Black Steel	2
30	14204	1" x 4" Long Pipe – Black Steel	1
31	7621	5/16"-18 x 3/4" Stainless Steel Hex Bolt	4
32	12574	5/16" Stainless Steel Nut	4
33	7598	5/16" Stainless Steel Lock Washer	4
34	13637	3/4" Side Out Elbow - Brass	1

Basic Material List

Components for Wiring Diagram W-3- 75600

Item	Symbol	Part No.	QTY	Description	Remarks
1	CT			.300 KVH Control Transformer	
1	1CT	14440	1	Primary 208/230/460V. Secondary 115V	50/60 HZ
1	2CT	16793	1	Primary 380 V. Secondary 115V	50 HZ
1	3CT	18775	1	Primary 400 V. Secondary 115V	50 HZ
1	4CT	18742	1	Primary 415 V. Secondary 115V	50 HZ
2	1FUI	15790	1	Fuse 3.2 Amp Slo-Blow	115 V. Control
3	MC			Motor Contactor	
3	MC1	70192	1	3 Pole N.O. AUX	Conveyor
3	MC2	70192	1	3 Pole N.O. AUX	Wash Pump
3	MC3	70192	1	3 Pole N.O. AUX	Prewash Pump
3	MC4	70192	1	3 Pole N.O. AUX	Rinse Pump
3	MC5	70192	1	3 Pole N.O. AUX	712 Blower
4	OL			Three Pole Motor Overload Relay	1 per 70192 Contactor
	OL1	71597	A.R.	Amp Range .6 to 1	
	OL2	71598	A.R.	Amp Range 1 to 1.6	
	OL3	71599	A.R.	Amp Range 1.6 to 2.5	
	OL4	71600	A.R.	Amp Range 2.5 to 4	
	OL5	71601	A.R.	Amp Range 5.5 to 8	
	OL6	71602	A.R.	Amp Range 4 to 6	
	OL7	71603	A.R.	Amp Range 7 to 10	
	OL8	71604	A.R.	Amp Range 10 to 13	
	OL9	71605	A.R.	Amp Range 13 to 18	
	OL10	71606	A.R.	Amp Range 18 to 25	
5		16559	1	"Red" Light	Power On
5		16559	1	"Red" Light	Fill On
5		16559	1	"Red" Light	Heat On
5		16559	1	"Red" Light	Conveyor On
5		16559	1	"Red" Light	Rinse On
5		16559	1	"Red" Light	Pumps On
6	Sol		1	Solenoid Valve (water)	
6	Sol1	12488	1	Final Rinse Solenoid	
6	Sol2	12488	1	Rinse Tank Fill	
6	Sol3	12488	1	Wash Tank Fill	
6	Sol4	12488	1	Prewash Tank Fill	
6	(Opt)	72273	A.R.	Solenoid Valve With Manual Bypass	Sol 1 thru 4
		97276	2	Contact Block N.O.	
		97277	1	Contact Block N.C.	
7	SW1	72387	1	Power Switch On-Off	Use With 97276
8	SW2	14479	1	Toggle Switch On-Off	712 Blower Heat
9	LS1	7235	1	Limit Switch – Conveyor Overload	Flight & Flight A-Round
9	LS1	10039	1	Limit Switch (L to R)	Flight
9	LS1	14761	1	Limit Switch (R to L)	Flight
9	LS2	72836	1	Limit Switch – Door Safety	
9	LS3	7235	1	Limit Switch – Final Rinse	
9	LS4	10039	1	Limit Switch – Conveyor Stop	Flight
9	LS5	7235	1	Limit Switch – Automatic Start	

Item	Symbol	Part No.	QTY	Description	Remarks
10	LLS 1	18865	1	Float Switch – L.C. & L.W.C.O.	Rinse Tank
10	LLS 2	18865	1	Float Switch - L.C. & L.W.C.O.	Wash Tank
10	LLS 3	18865	1	Float Switch – Level Control	Prewash Tank
10	LLS 4	18865	1	Float Switch –Low water Cut-Off	Rinse Tank – Gas Only
10	LLS 5	18865	1	Float Switch –Level Control	Wash Tank – Gas Only
11	*CR-1	75452	1	Main Control Relay	Solid State
11	CR-2	75584	1	Switching Relay – Heat/Fill	Rinse Tank – DPDT
11	CR-3	75584	1	Switching Relay – Heat/Fill	Wash Tank - DPDT
12	CR4	75584	1	Relay for Automatic Cut-Off	DPDT
13	CTM1	75582	1	5 Minute Timer – Automatic Cut-Off	Solid State
13	CMT1	76325	1	2 Minute Timer – Automatic Cut-Off	Solid State
14	TM-1	74235	1	Timer – Rinse Tank Fill – 15 to 300 Sec.	Solid State
14	TM-2	74235	1	Timer – Wash Tank Fill – 15 to 300 Sec.	Solid State
15	PB-1	97275	1	“Green” Start Button	Use With 97276
15	PB-3	97275	1	“Green” 1 st Remote Start Button	Use With 97276
15	PB-5	97275	1	“Green” 2 nd Remote Start Button	Use With 97276
16	PB-2	97274	1	“Red” Stop Button	Use With 97277
16	PB-4	97274	1	“Red” 1 st Remote Stop Button	Use With 97277
16	PB-6	97274	1	“Red” 2 nd Remote Stop Button	Use With 97277
17	THS-1	7768	1	Thermostat – Rinse Tank	
17	THS-2	7768	1	Thermostat –Wash Tank	
17	THS-3	7768	1	Thermostat –Steam Booster	
17	THS-4	17595	1	Thermostat – Prewash Temp Control	Wire Number
18	THS-5	20484	1	Surface Thermostat 260°	712-E Blower
19	HC	7209	A.R.	Heat Contactor – 3 Pole 30 Amp	(HC1,HC2,HC3)
19	HC	7210	A.R.	Heat Contactor – 3 Pole 60 Amp	HC1,HC2,HC3)
19	HC	7211	A.R.	Heat Contactor – 3 Pole 90 Amp	HC1,HC2,HC3)
20	SSOL	12085	A.R.	Solenoid - Steam	SSOL-1,SSOL-2,SSOL-3
21	GS-1	7642	1	Gas Controller – Rinse Tank	Natural Gas
21	GS-1	7705	1	Gas Controller – Wash Tank	L.P. Gas
22	GS-2	7642	1	Gas Controller – Rinse Tank	Natural Gas
22	GS-2	7705	1	Gas Controller – Wash Tank	L.P. Gas
23	TB1	71318	1	Power Terminal Block Assembly	
		71320	1	Power Terminal Block Assembly	
24	MTR-1	10275	1	¼ H.P. Motor 115/230/60HZ-1PH	Conveyor (Rack)
24	MTR-1	10276	1	¼ H.P. Motor 230/460/60HZ-3PH	Conveyor (Rack)
24	MTR-1	11312	1	½ H.P. Motor 115/230/60HZ-1PH	Conveyor(Flight, F.A.,R.A.)
24	MTR-1	11314	1	½ H.P. Motor 230/460/60HZ-3PH	Conveyor(Flight, F.A.,R.A.)
24	MTR-2	8335	A.R.	2 H.P. Motor “C” Face115/230/60HZ-1PH	Pump: Wash, Rinse, Prewash
24	MTR-2	8337	A.R.	2 H.P. Motor “C” Face230/460/60HZ-3PH	Pump: Wash, Rinse, Prewash
24	MTR-2	14475	A.R.	3 H.P. Motor “C” Face230/460/60HZ-3PH	Pump: Wash, Rinse, Prewash
24	MTR-3	7375	1	½ H.P. Motor “C” Face115/230/60HZ-1PH	“P” Tank Pump
24	MTR-3	7382	1	½ H.P. Motor “C” Face230/460/60HZ-3PH	“P” Tank Pump

* NOTE: Use Relay 75584 for CR-1 When Machine Has Automatic Control

Item	Symbol	Part No.	QTY	Description	Remarks
24	MTR-3	17798	OPT	1 H.P. Motor "C" Face 115/230/60HZ-1PH	"P" Tank Pump
24	MTR-3	8247	OPT	1 H.P. Motor "C" Face 230/460/60HZ-3PH	"P" Tank Pump
24	MTR-4		1		Same as MRT-2 Pump Motors
24	MTR-5	17971	1	¾ H.P. Motor 115/230/60HZ-1PH	Econo-Blower
24	MTR-5	17972	1	¾ H.P. Motor 230/480/60HZ-3PH	Econo-Blower
24	MTR-5	20485	1	¾ H.P. Motor 115/230/60HZ-1PH	Econo-Blower
24	MTR-5	15126	1	2 H.P. Motor 230/460/60HZ-3PH	712 Blower
25	HTR	75456	A.R.	10 KW Immersion Heater 240 Volt	Wash & Rinse
25	HTR	75459	A.R.	10 KW Immersion Heater 480 Volt	Wash & Rinse
25	HTR	75455	A.R.	15 KW Immersion Heater 240 Volt	Wash & Rinse
25	HTR	75458	A.R.	15 KW Immersion Heater 480 Volt	Wash & Rinse
25	HTR	75210	A.R.	20 KW Immersion Heater 240 Volt	Wash & Rinse
25	HTR	75457	A.R.	20 KW Immersion Heater 480 Volt	Wash & Rinse
25	HTR	18714	A.R.	3 KW Finned Heater 240 Volt	Blower Dryers
25	HTR	20488	A.R.	3 KW Finned Heater 480 Volt	Blower Dryers

Blakeslee Authorized Parts & service Distributors and Preferred Service Agents are the focal point for service and are responsible for all warranty/repair work and for maintaining a complete stock of replacement parts.

They have factory-trained servicemen and are kept informed by the factory on the latest servicing procedures.

To receive service and/or parts, call the Blakeslee Distributor nearest you. If you happen to be in an area not covered by a distributor, phone the Blakeslee Service Department in Chicago at 708-656-0660 for the name and location of one of over 300 strategically-located Blakeslee Authorized Service Agencies, which is nearest you.

ALABAMA

Jones McLeod Appliance Co.
1616 Seventh Ave. North
Birmingham, AL 35203
205-251-0159

ARIZONA

Byassee Equipment
1939 E. Washington
Phoenix, AZ 85034
602-252-0402

ARKANSAS

Bromley Parts & Service
10th & Ringo Street
Little Rock, AR 72202
501-374-0281

CALIFORNIA

Acme Pacific Repairs, Inc.
1347 Fulton Place
Fremont, CA 94539
510-252-2070

Barker's Food Machinery Ser.
5367 Second Street
Irwindale, CA 91706
626-960-9390

Chapman Appliance Service
1784 San Diego Ave.
San Diego, CA 92126
619-298-7106

Sterling Service
644 W. Hawthorn Street
Irwindale, CA
818-243-1234

COLORADO

Metro Appliance Service
1640 S. Broadway
Denver, CO 80210
303-778-1126

CONNECTICUT

A-Tech Service, Inc.
161 Sanrico Drive
Manchester, CT 06040
860-649-6627

DISTRICT OF COLUMBIA

Electric Motor Repair
700 East 25th Street
Baltimore, MD 21218
410-467-8080

FLORIDA

Commercial Appliance Service
8416 Laurel Fair Circle
Tampa, FL 33610
813-663-0313

Dade Restaurant Repair
2001 W. 27th Street
Hialeah, FL 33010
305-887-0783

GCS
3373 Northwest 168th Street
Miami, FL 33056
305-623-7001

FLORIDA (Cont.)

Nass Service Co. Inc.
1108 S. Woods Ave.
Orlando, FL 32805
407-425-2681

GEORGIA

TWC
5080 Highlands Pkwy S. A150
Smyrna, GA 20082
770-438-9797

HAWAII

Commercial Appliance
Parts & Service Co.
1623 Democratic St.
Honolulu, HI 96819
808-841-4545

IDAHO

Boise Appliance
1503 Main Street
Boise, ID 83702
208-343-0102

ILLINOIS

Eichenauer Food Equipment
130 S. Oakland Ave.
Decatur, IL 62522
217-429-4229

General Parts Inc
248 James Street
Bensenville, IL 60106
630-595-3300

Rescor
5344 East Ave.
Countryside, IL 60525
708-352-3155

INDIANA

GCS
5310 East 25th Street
Indianapolis, IN 46218
317-545-9655

IOWA

Goodwin-Tucker
2900 Delaware Ave
Des Moines, IA 50137
515-262-9308

KANSAS

General Parts, Inc.
1101 E. 13th Street
Kansas City, MO 64101
816-421-5400

KENTUCKY

GCS
4204 S. Brook Street
Louisville, KY 40214
502-367-1788

GCS
533 A Codell Drive
Lexington, KY
859-269-7484

LOUISIANA

Chandler's Parts & Service
11656 Darryl Drive
Baton Rouge, LA 70815
225-272-6620

MARYLAND

Electric Motor Repair CO.
700 East 25th Street
Baltimore, MD 21218
410-467-8080

MASSACHUSETTS

Ace Service Co. Inc.
95 Hampton Ave.
Needham (Boston), MA 02194
617-449-4220

MICHIGAN

E & G Appliance Service Co.
1435 Lawndale Ave.
Detroit, MI 48209
313-842-2252

Midwest Food Equipment Serv.
3055 Dixie
Grandville, MI 49418
616-261-2000

MINNESOTA

GCS
2854 Louisiana Ave. North
Minneapolis, MN 55427
763-546-4221

MISSISSIPPI

Camp Service & Parts Inc.
328 B Oakdale Street
Jackson MS 39201
601-353-9700

MISSOURI

Kaemmerlen Parts & Service
2728 Locust Street
St. Louis, MO 63105
314-535-2222

NEBRASKA

Goodwin-Tucker Group
7535 D Street
Omaha, NE 68124
402-397-2880

NEVADA

Burney's Commercial Service
4480 Aldebaran Ave.
Las Vegas, NV 89103
702-736-0006

NEW MEXICO

R & B Service
4412 Towner N.E.
Albuquerque, NM 87110
505-889-4090

NEW YORK

Acme American Repairs Inc.
99 Scott Ave.
Brooklyn, NY 112237
718-456-6544

Duffys Rest. Equip. Service
3138 Oneida Street
Sauquoit (Utica), NY 13456
315/737-9401

NORTH CAROLINA

Authorized Appliance Service
1020 Tuckaseegee Road
Charlotte, NC 28208
704/377-4501

OHIO

Akron Restaurant Equipment
1169 W. Waterloo Road
Akron, OH 44314
330/753-6635

Commercial Parts & Service
6940 Plainfield Road
Cincinnati, OH 45236
513-984-1900

Electrical Appliance Repair
5805 Valley Belt Road
Cleveland, OH 44131
216-459-8700

OKLAHOMA

Krueger Electric Service Inc.
100 N.E. 24th Street
Oklahoma City, OK 73105
405-528-8883

OREGON

Ron's Service Inc.
16364 S.W. 72nd Ave.
Portland, OR 97224
503-624-0890

PENNSYLVANIA

American Kitchen Mach. Corp.
204 Quarry Street
Philadelphia, PA 19106
215-627-7760

GCS

210 Vista Park Dr.
Pittsburg, PA 15205
412-787-1970

K & D Parts
1833-41 N. Cameron Street
Harrisburg, PA 17103
717-236-9039

SOUTH CAROLINA

Whaley Foodservice Repairs
2544D Morningside Dr.
West Columbia, SC 29169
803-926-5252

TENNESSEE

A-Tech Inc
424 Sixth Avenue South
Nashville, TN 37203
615-255-2002

FESCO
1209 S. Watkins
Chattanooga, TN 37404
423-624-3381

GCS
3717 Cherry Road
Memphis, TN 38118
901-366-4587

TEXAS

Commercial Kitchen Repair
1377 N. Bravos
San Antonio, TX 78207
210-735-2811

Kenco Service
26 Lyerly - Suite 1
Houston, TX 77022
713-691-2935

Stove Parts Supply Co.
2120 Solana
Fort Worth, TX 76117
817-831-0381

UTAH

LaMonicas Restaurant
Equipment Service
6182 South Stratler
Murray, UT 84107
801-263-3221

VERMONT

Authorized Appliance
74th River Street
Rutland, VT 05701
802-775-5588

VIRGINIA

Daubers Inc.
7645 Dynatech Court
Springfield, VA 22153
703-866-3600

WASHINGTON

Walsh Equipment Repair
1519 128th Place N.E.
Bellevue, WA 98005
425-462-1645

WEST VIRGINIA

Authorized Factory Service
Edens Fork Exit I 77
Charleston, WV 53186
304-344-8225

WISCONSIN

General Parts Inc.
W223 N. 735 Saratoga Dr.
Waukesha, WI 53186
262-650-6666

ALBERTA

Great West Comm. Kit. Rep.
5664 Burlleigh Cresc. S.E.
Calgary, AB T2H 1Z8
Tel: 403-276-7832

L.D.I. Technical Services
4 - 3600 21st St. N.E.
Calgary, AB T2E 6V6
Tel: 403-299-9591

North Star Repair
11518 119th Street
Edmonton, AB T5G 2X7
Tel: 780-453-6213

Robertshaw Refrigeration
P.O. Box 840
Cold Lake, AB T9M 1P2
Tel: 780-594-3488

Re-Nu Mechanical Ltd.
1710 Bay F - 31st St. N.
Lethbridge, AB T1H 5H1
Tel: 403-327-7368

Medicine Hat Refrigeration
666 17th Street S.W.
Medicine Hat, AB T1A 4X7

Satellite Mechanical Ltd.
#1 - 5571 45th Street
Red Deer, AB T4N 1L2
Tel: 403-343-6122

BRITISH COLUMBIA

Key Food Equip. Services
180 - 3700 North Fraser
Burnaby, BC V5J 5H4
Tel: 604-433-4484

Marsh & Sons Ventures
10411 - 95th Avenue
Fort St. John, BC V1J 5Z4
Tel: 250-787-9733

J.D. Appliance Repairs
1965 Moss Cr.
Kelowna, BC V1Y 9L3
Tel: 250-860-5057

Jemco Food Equip. Service
7431 Industrial Road
Lantzville, BC V0R 2H0
Tel: 250-390-3244

Sheridan Appliances
764 Chaparral Place
Kamloops, BC V2C 5W4
Tel: 250-314-1722

Mark's Rest. Services
515 Dupplin Road, #3
Victoria, BC V8Z 1C2
Tel: 250-475-6275

Key Food Services
2740 Bridge St., #105
Victoria, BC V8T 5C5
Tel: 250-920-4888

Triumph Food Equip. Service
4671 Slocan Street
Vancouver, BC V5R 1Z8
Tel: 604-454-9326

MANITOBA

Grand Valley Mechanical
360 Park Avenue E.,
Brandon, MB R7A 6N2
Tel: 204-728-3898

Commercial Kitchen Equip.
731 Wall Street
Winnipeg, MB R3G 2T6
Tel: 204-586-8273

Res Tech Service Ltd.
593 Sherburne Street
Winnipeg, MB R3G 2K8
Tel: 204-228-5399

NEW BRUNSWICK

D & L Electric
83 Sister Green Road
Campbellton, NB E3N 3Y5
Tel: 506-753-5076

Electrical & Refrigeration Serv.
88 Beaverbrook Street
Moncton, NB E1C 8H7
Tel: 506-857-2232

EMR
122 Driscoll Avenue
Moncton, NB E1E 3R8
Tel: 506-855-4228

I Line Electric Ltd.
280 Dalton Avenue
Miramichi, NB E1V 3N9
Tel: 506-622-2214

Fundy Gas & Electric
45 Glen Road
Saint John, NB E2H 2C9

NEWFOUNDLAND

Bob's Electric
14 Cooks Avenue
Cornerbrook, NF A2H 1P1
Tel: 709-634-7588

Domestic Service Centre
27 McCurdy Drive, P.O. Box 83
Gander, NF A1V 1W5
Tel: 709-256-7738

Harold Snow & Son Ltd.
451 Kenmount Road
St-John's, NF A1B 3P9
Tel: 709-754-0330

NOVA SCOTIA

Jerome Cameron
R.R. #5, Salt Springs
Antigonish, NS B2G 2L3
Tel: 902-863-4528

Harry Rhyno Refrigeration
233 North Street
Bridgewater, Lun. Co. NS
B4A 2V7
Tel: 902-543-4737

Walker's Electric
2608 Windsor Street
Halifax, NS B3K 5C8
Tel: 902-454-0291

NOVA SCOTIA Continued

Buddens Appliance Service
164 Nichols Avenue
Kentville, NS B4N 2H6
Tel: 902-678-7895

J.R. Mahoney Ltd.
1810 Kings Road
Sydney, NS B1L 1C5
Tel: 902-564-8775

Syd Tech Appliances
Box 1907
Sydney, NS B1P 6W4
Tel: 902-561-0156

Fundy Appliance Service
Truro, NS B2N 5B3
Tel: 902-897-0479

ONTARIO

OFS Restaurant Appl. Serv.
16 Lennox Dr., R.R. #2
Barrie, ON L4M 4S4
Tel: 705-728-5289

ChemMark
52 Highway 17, P.O. Box 371
Chalk River, ON K0J 1J0
Tel: 613-584-2988

Kitchenworks Rest. Equip. Sup
R.R. #5, 823974 Massie Rd.
Chatsworth, ON N0H 1G0
Tel: 519-794-3633

G.R. Garrity
39 Regal Road
Guelph, ON N1K 1B6
Tel: 519-836-1090

Barbers Rest. Eq. & Repairs
927 Barton Street E.
Hamilton, ON L8L 3C4
Tel: 905-527-2525

J.I.K.S. Ind. Kitchen Serv.
42 Groff Place, #4
Kitchener, ON N2E 2L6
Tel: 519-748-5361

R.G. Henderson & Son Ltd.
660A Justus Drive
Kingston, ON K7M 4H4
Tel: 613-384-1718

A-1 Plumbing & Heating
P.O. Box 414
Ilderton, ON N0M 2A0
Tel: 519-455-6559

Action Rest. & Serv. Equip.
151 Bentley Street, #9
Markham, ON L3R 3L1
Tel: 905-475-1499

Stell Mechanical
25 Iron Street
Etobicoke, ON M9W 5E3
Tel: 905-569-8270

Repco Restaurant Equip.
9208 Lundy's Lane
Niagara Falls, ON L2E 6S4
Tel: 905-358-9071

ONTARIO Continued

Blanchfield Comm. Kit. Serv.
770 Industrial Ave., Unit 13
Ottawa, ON K1G 4H3
Tel: 613-737-6632

McNabb Appliances
370 Burnham Street
Peterborough, ON K9H 1T6
Tel: 705-743-5350

Erlmar Plumbing Ltd.
795 Batory Avenue
Pickering, ON L1W 2W5
Tel: 905-420-5252

Sure-Fix Food Equip. Serv.
52 Vine Street S.
St. Catharines's ON L2R 3X8
Tel: 905-685-0480

W.J. Barnes & Son
116 Talford Street
Sarnia, ON N7T 7J2
Tel: 519-332-1770

Sault Rapid Repair
1496 Wellington St. E.
Sault Ste. Marie, ON P6A 2R1
Tel: 705-759-3311

Tisdale Plumbing & Heating
40 Golden Avenue
South Porcupine, ON P0N 1H0
Tel: 705-235-4045

Sudbury Rapid Service
23 Main Street
Chelmsford, ON P0M 1L0
Tel: 705-671-6477

Jemm Service
1211 Ford Street
Thunder Bay, ON P3A 4R8
Tel: 807-623-7851

R.G. Henderson & Son Ltd.
100 Thorncliff Park Dr.
Toronto, ON M4H 1G9
Tel: 416-423-4357

P.E.I.

Waites Enterprises
626 South Drive
Summerside, PEI C1N 3Z7
Tel: 902-436-7509

QUEBEC

Choquette CKS
8487 19th Avenue
Montreal, QC H1Z 4J2
Tel: 514-723-5000

L. Chasse Inc.
448 Richelieu
Pointe au Pic, QC G5M 1C9
Tel: 418-723-9100

Majella Vaillancourt
82 St. Cyrille
Riviere de Loup, QC G5R 2G8
Tel: 418-862-2503

QUEBEC

Electro Ref. Service Ent.
161 Pere Divet
Sept-Iles, QC G4R 3P8
Tel: 418-962-9186

Kitchen Equipment Services
893 King Street W.
Sherbrooke, QC J1H 1R9
Tel: 819-821-2153

Choquette CKS
900 Pierre Bertrand, #220
Ville Vanier, QC G1M 3K2
Tel: 418-681-3944

SASKATCHEWAN

Comfort Mechanical
1355 11th Avenue
Regina, SK S4P 0G8
Tel: 306-352-0544

Northcote Sales & Serv. Co.
1327 Hamilton Street
Regina, SK S4R 2B6
Tel: 306-525-1979

Evan's Restaurant Serv.
410 Lauriston Street
Saskatoon, SK S7K 0R5
Tel: 306-653-2772

YUKON

Oscar's Electric
310 Alexander St.
Whitehorse, YK Y1A 2L6
Tel: 867-667-2330

Yukon Appliance Sales & Serv.
9041 Quartz Road
White Horse, YK Y1A 4Z5
Tel: 867-668-4844

Gas Repair Equipment
7 St. N.E. #322 Puerto Nuevo
San Juan, PR 00920
787-749-8044