

Strip cutter/meat tenderizer

S111 plus



4



Strip cutter/meat tenderizer

S111 plus

Content of drawings	Page of drawing
Basic parts	1
Infeed chute	6
Filler tray	7
Bench	8
Streifenschneiderinsert	
Bracket	9
Blade roller S012	10
Blade roller S011	11
Blade roller – Blade disk for S021	12
Blade roller S021 – 4 mm insert	13
Blade roller S021 – 10 mm insert	14
Blade roller S021 – 12 mm insert	15
Blade roller S021 – 16 mm insert	16
Blade roller S021 – 20 mm insert	17
Blade roller S021 – 8 mm insert	18
Blade roller S021 – 6 mm insert	19
Blade roller S021 – 30 mm insert	20
Stripper and discharge stripper	21
Gear unit	23
Plates and operating instructions	27
Mains supply lines	30
Last page of drawings	30

12-2 Rimmed drawing position numbers mark the assemblies of spare parts. The spare parts, which may be ordered, are marked in a detailed way elsewhere in the spare parts list.

The spare parts marked with „Q” are important for the verification, i. e. at the assembly of these parts the verification seal is destroyed. These parts can be purchased only at authorized Bizerba representations.

On the image and text section spear and wear parts are highlighted with (V).

The content of the parts number list is located before the text pages in the rear part of the spare parts list.

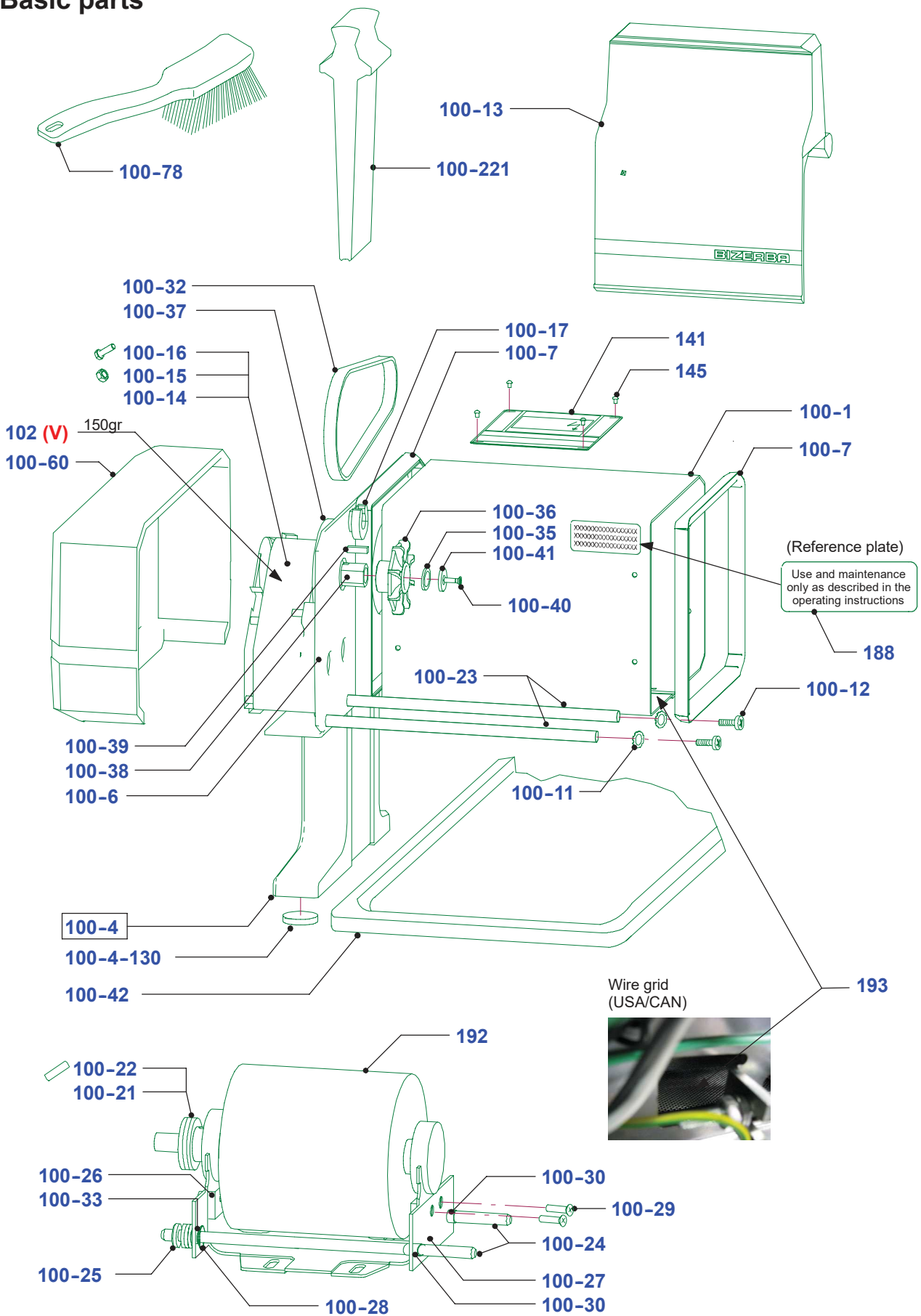
S111 plus

Spare parts list No.
073.98.3.1004

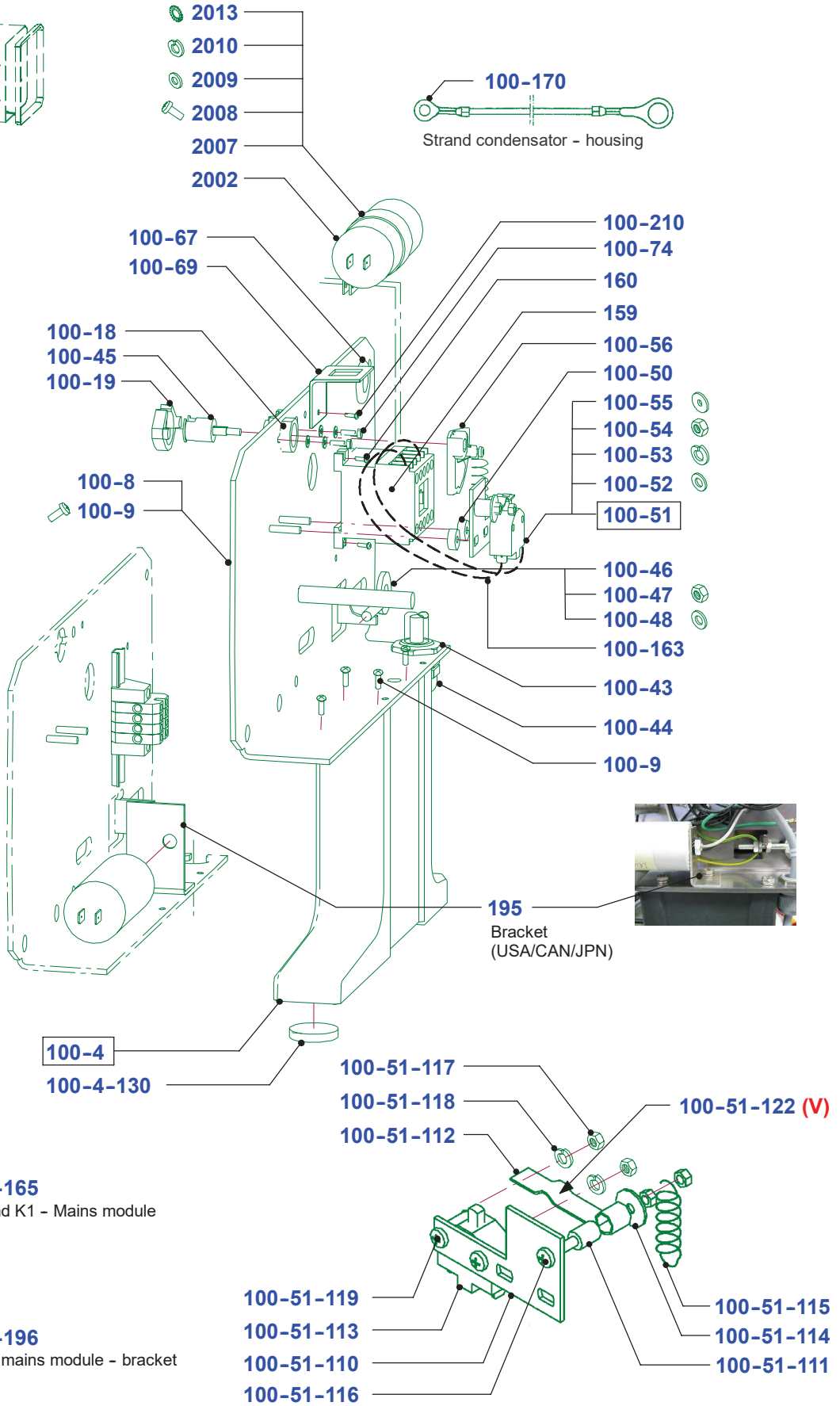
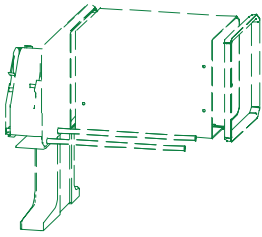
Series (code No.)
90.134

4

Basic parts

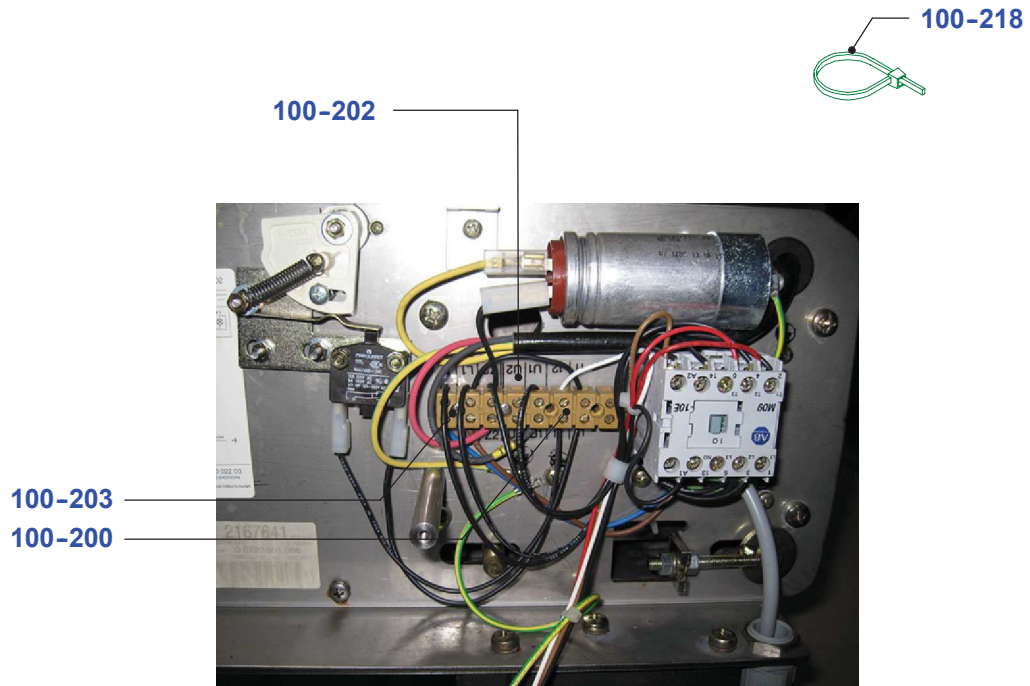


Basic parts



4

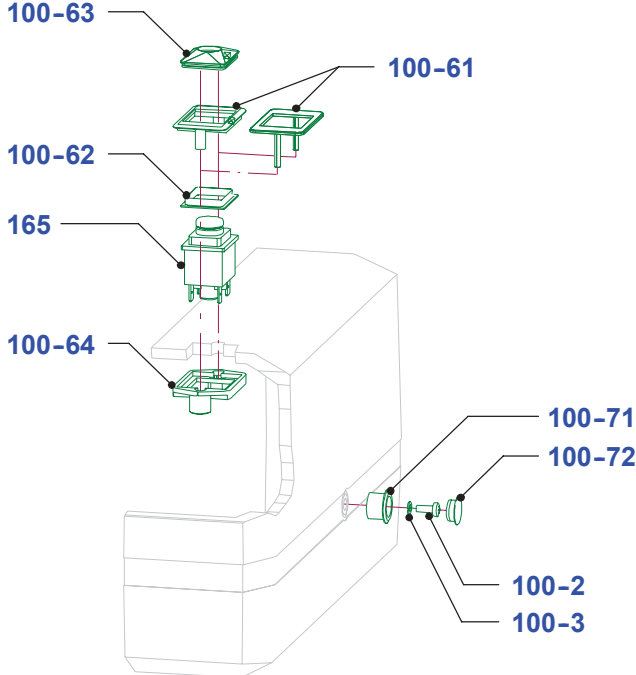
Basic parts



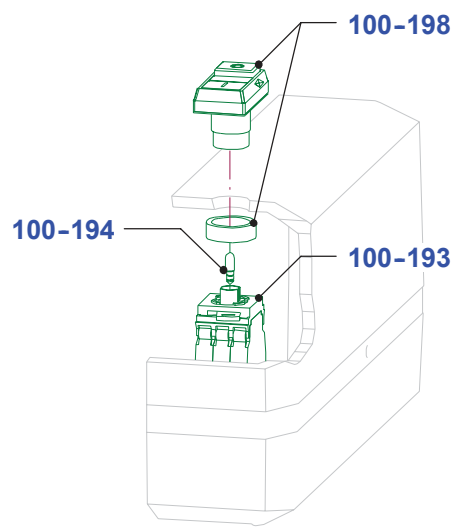
Basic parts

Cover hood

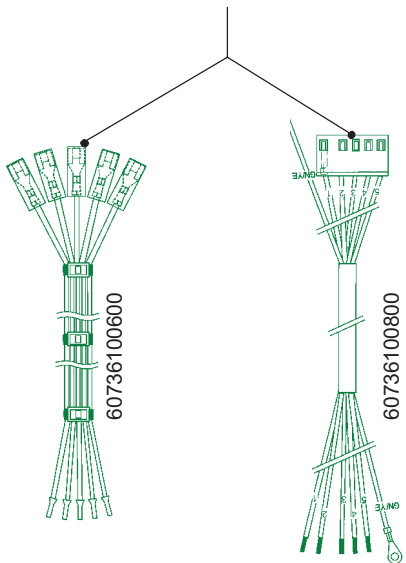
1. generation



2. generation



164

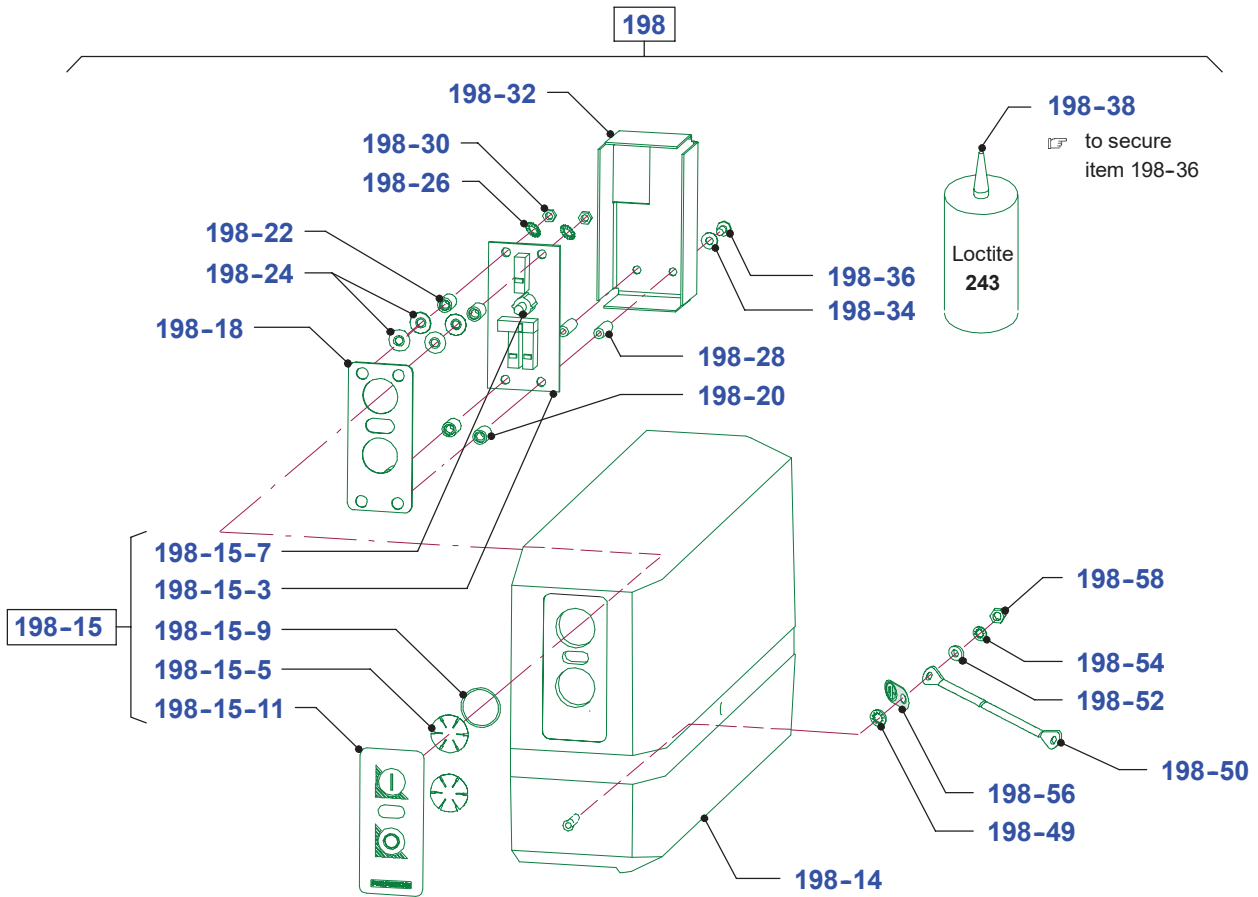


Cover hoods of the 1. or 2. Generation are no longer available. Please convert to latest version (see ite, 198 and 199)!

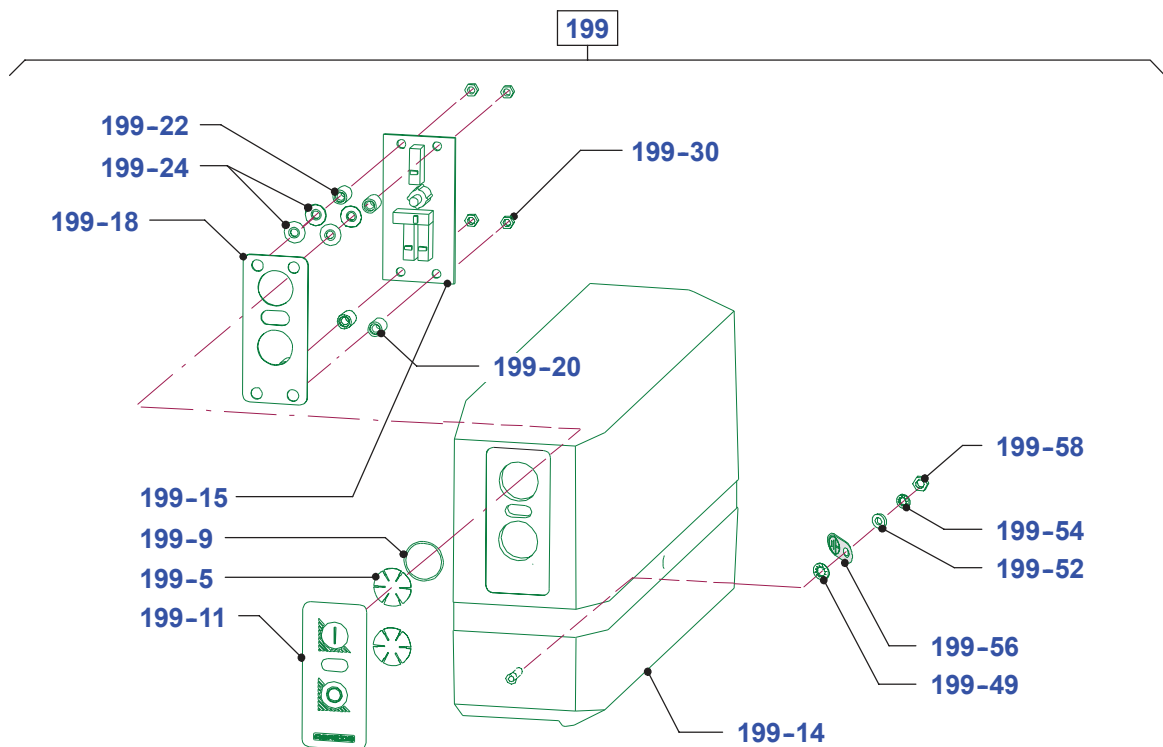
4

Basic parts

Cover hood version 2010 - 230 V

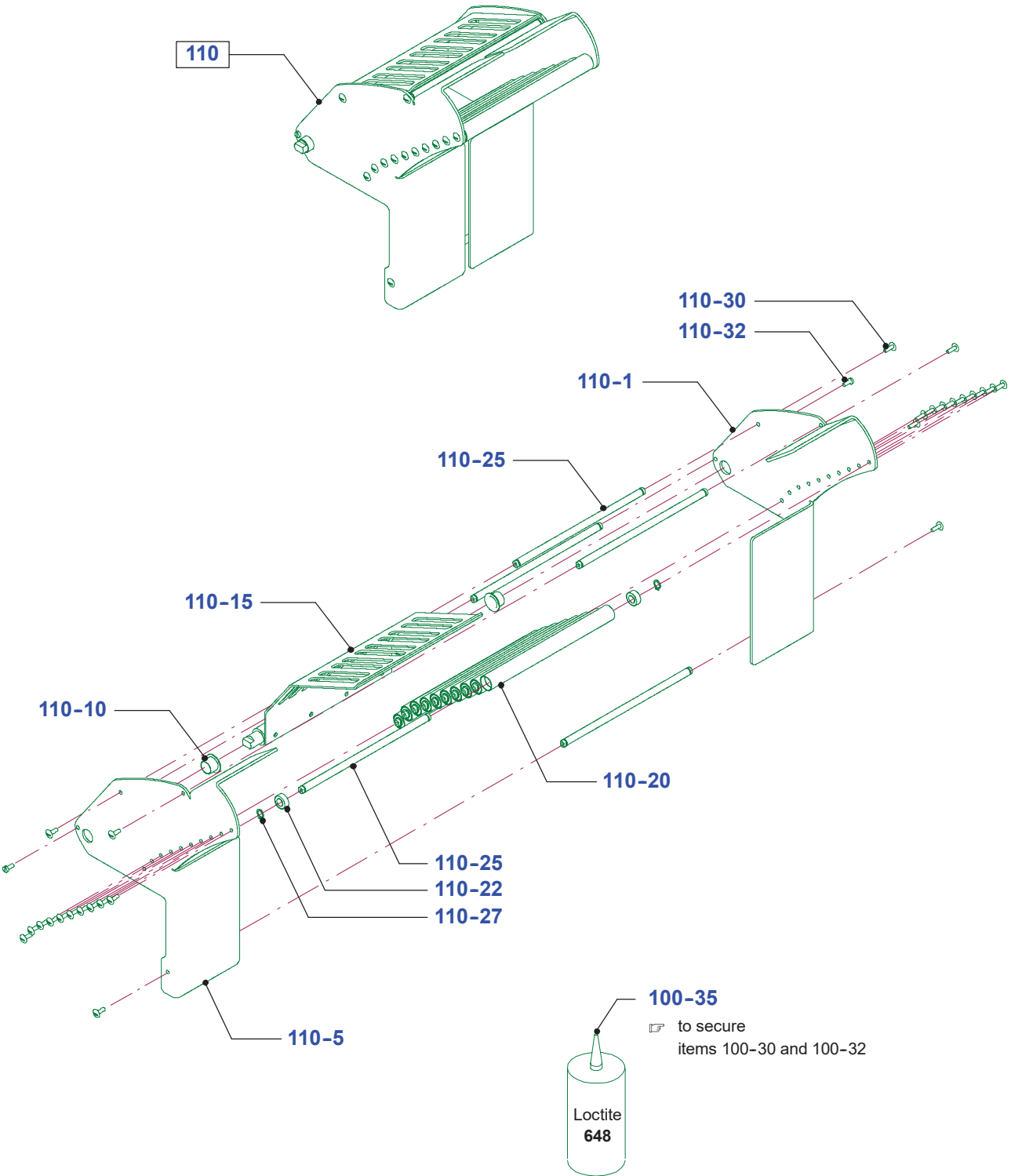


Cover hood version 2010 - 120 V

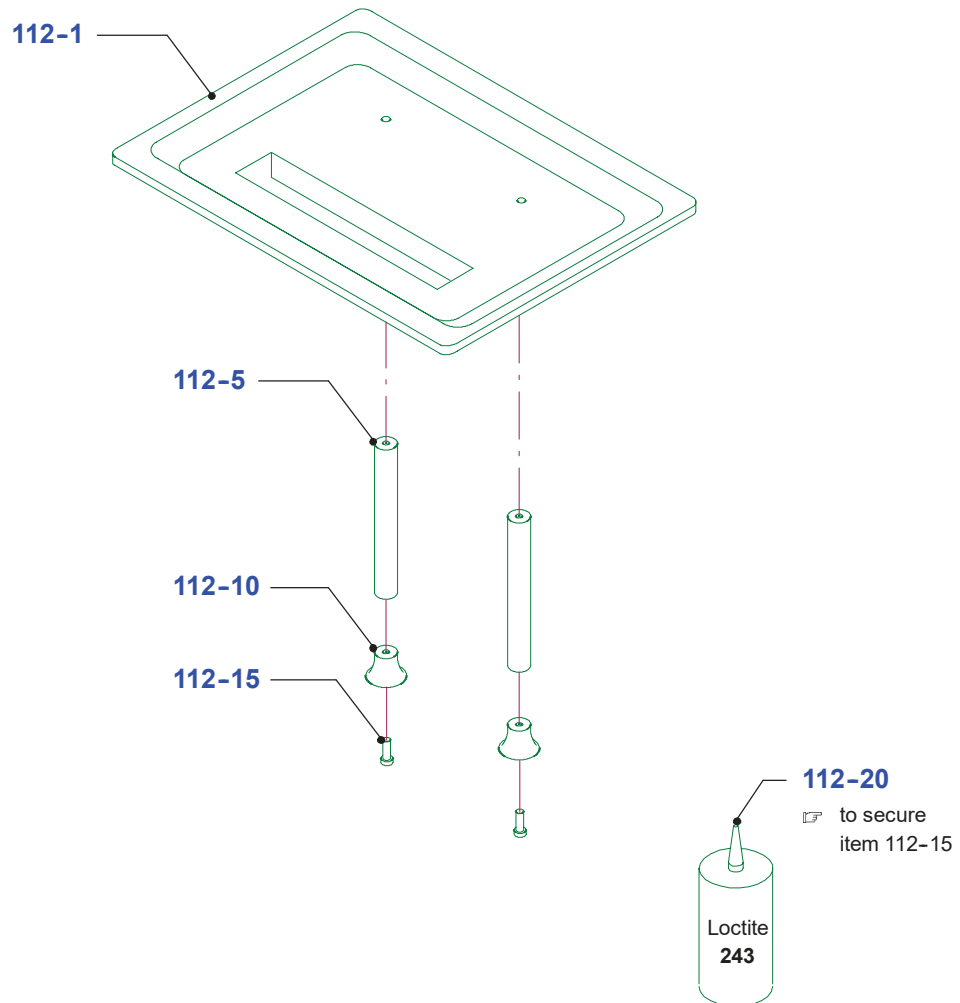


Infeed chute

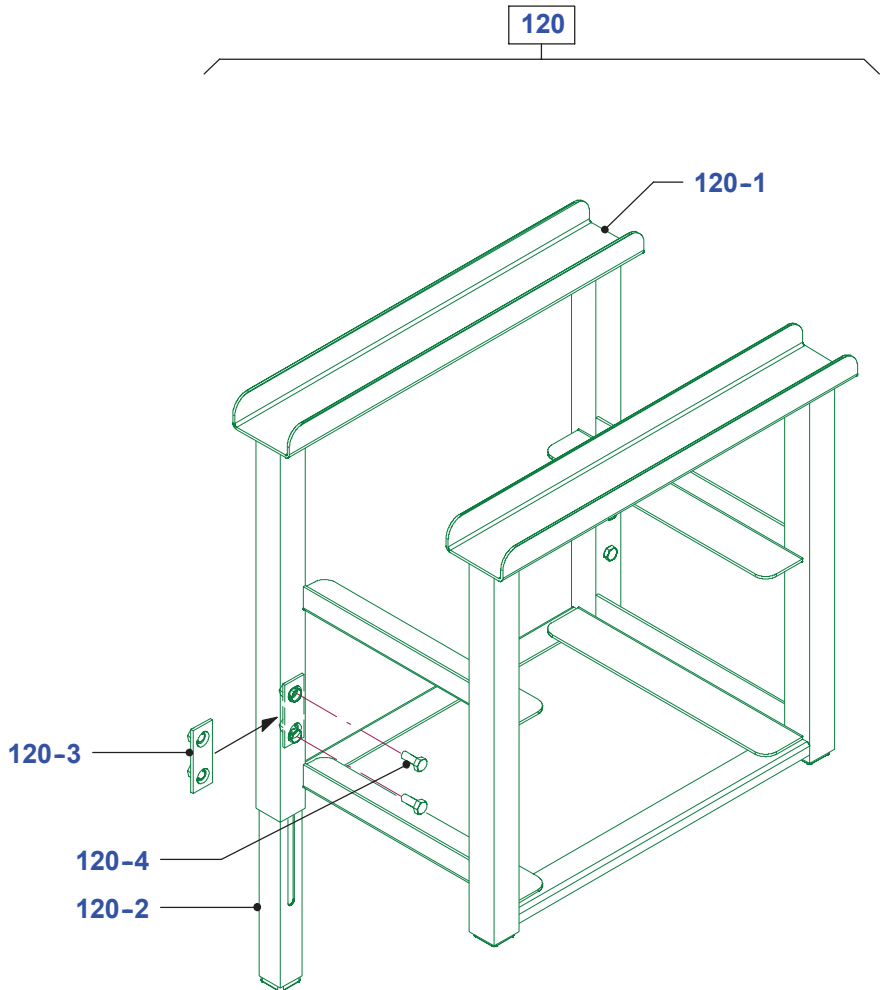
4



Filler tray



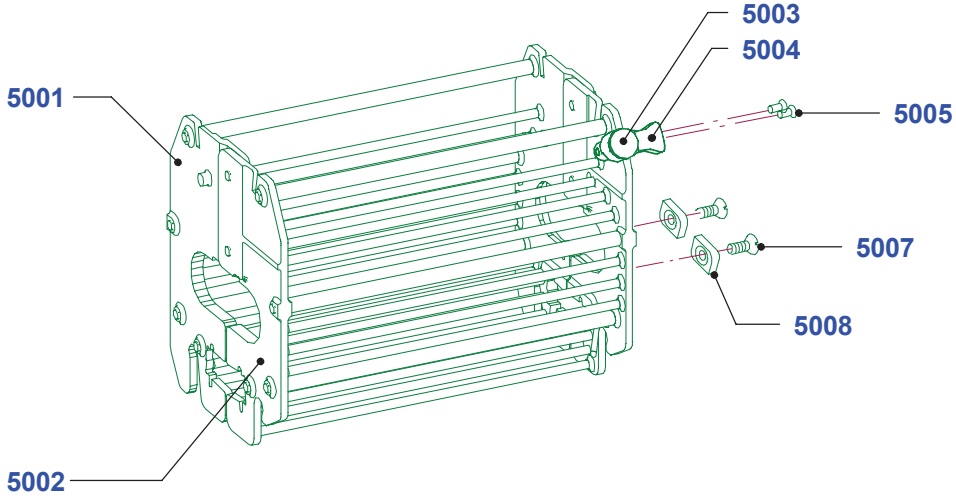
Bench



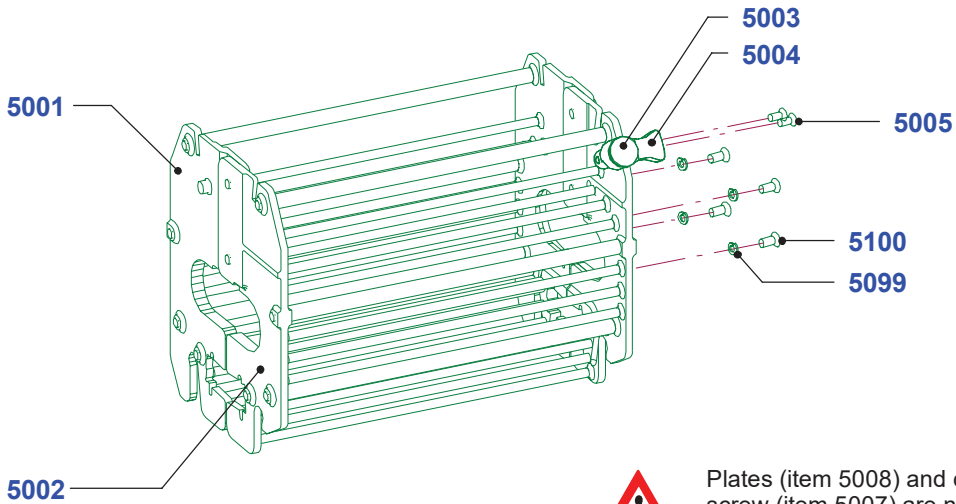
4

Bracket

Version 05



Version 06 (As of version no. 158 1321)

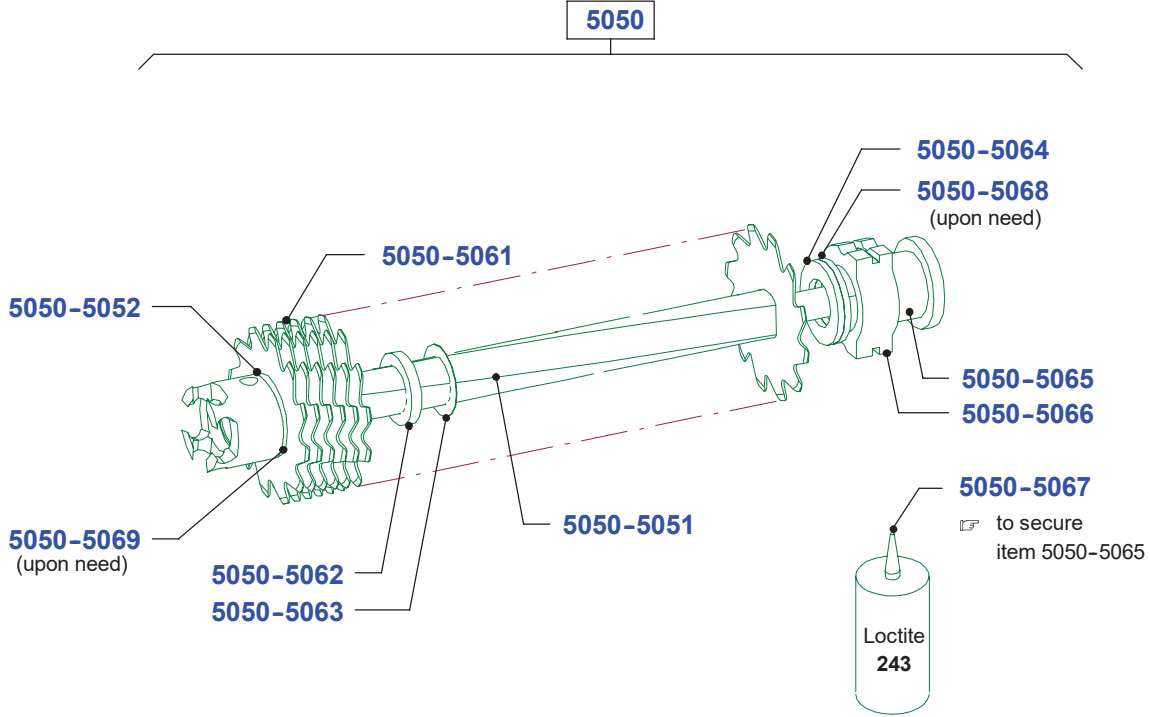


Plates (item 5008) and countersunk screw (item 5007) are no longer needed!

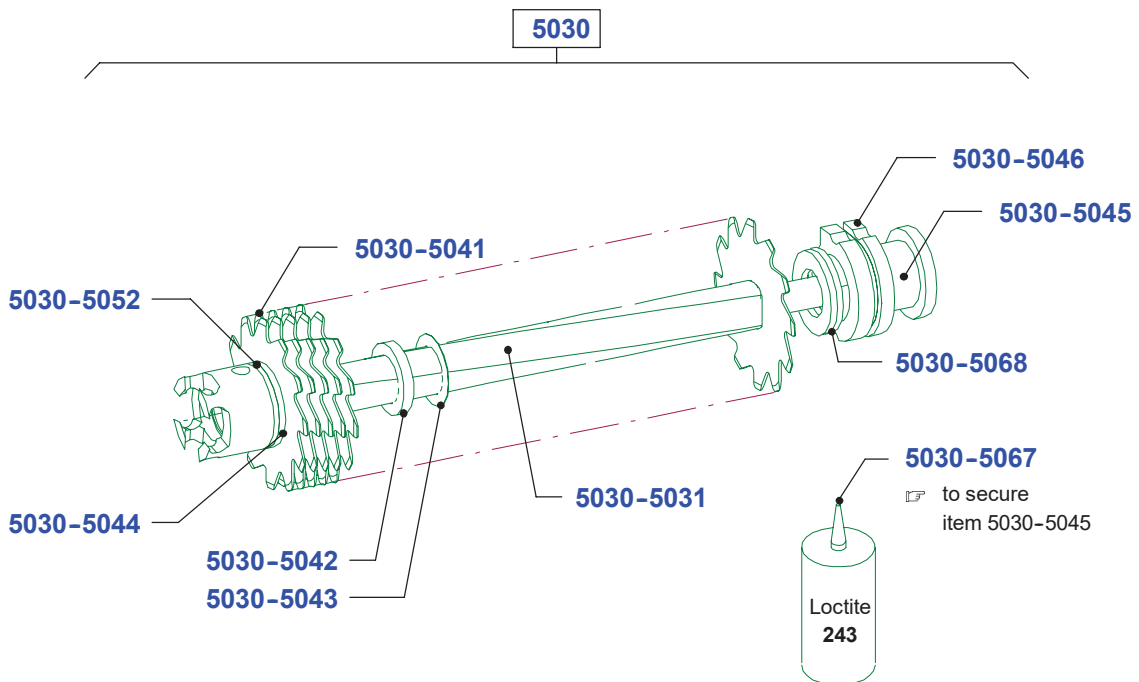
Page of drawing 10	S111 plus	Spare parts list No. 073.98.3.1004	Series (code No.) 90.XXX
------------------------------	------------------	--	------------------------------------

Blade roller

S012 - Right half

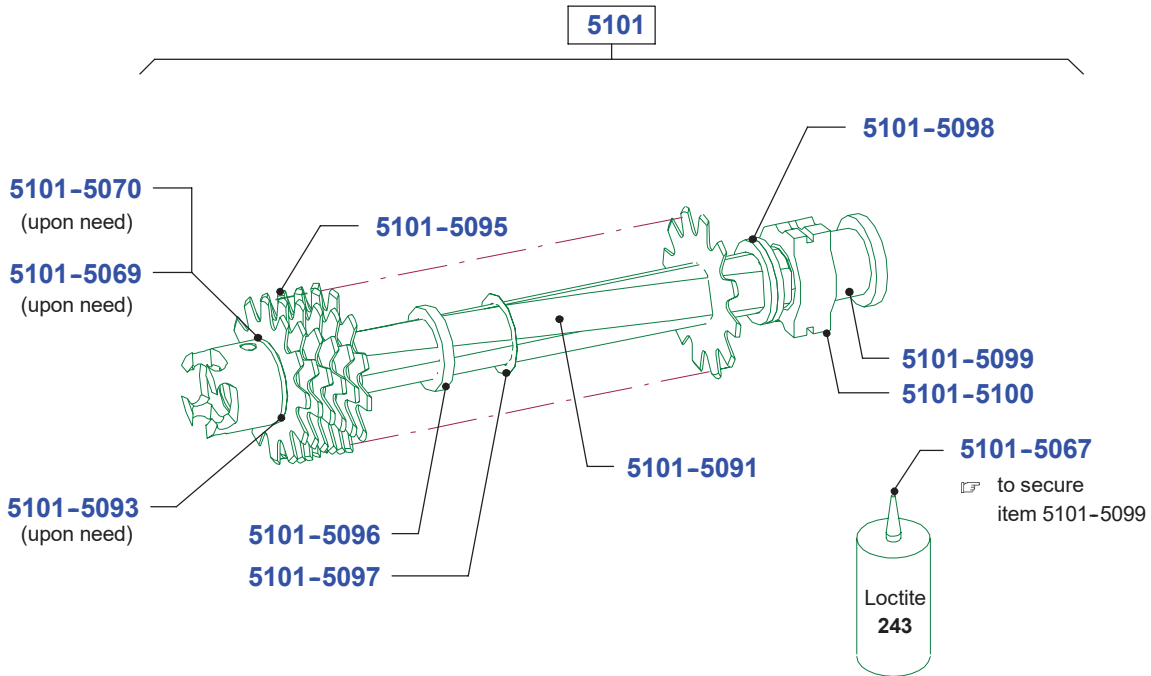


S012 - Left half

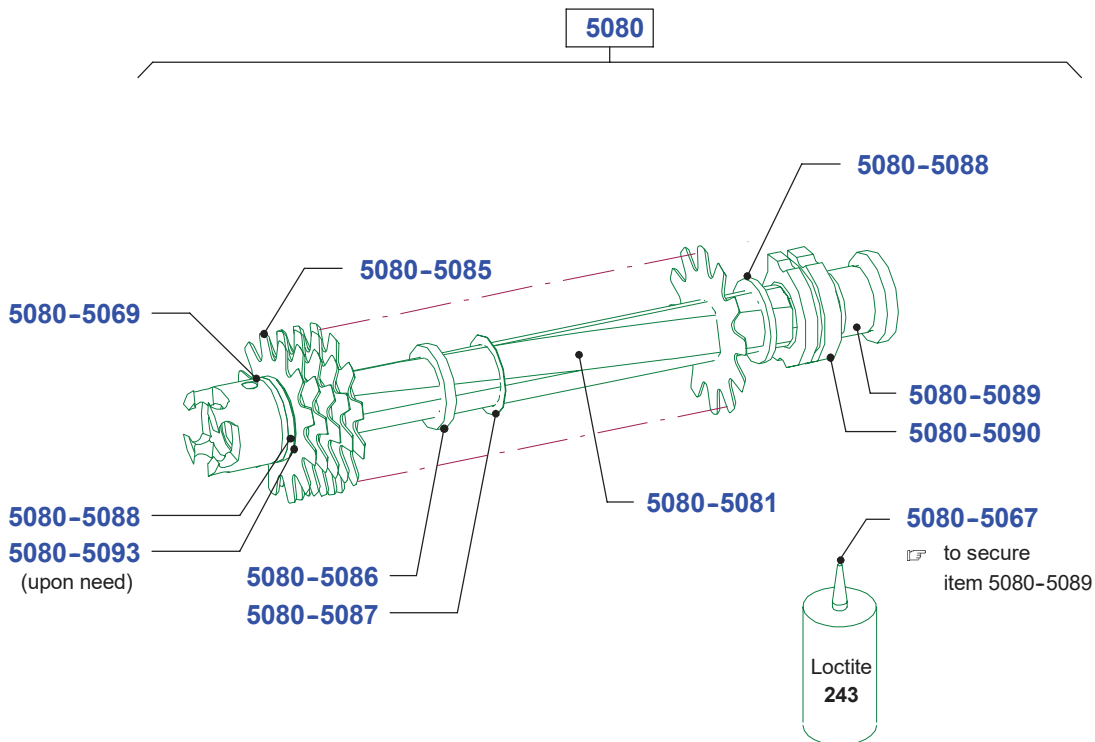


Blade roller

S011 - Right half



S011 - Left half

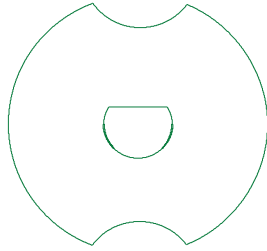


Page of drawing 12	S111 plus	Spare parts list No. 073.98.3.1004	Series (code No.) 90.XXX
------------------------------	------------------	--	------------------------------------

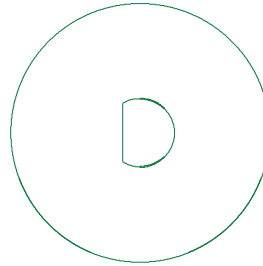
Blade roller

Blade disk for S021

with recess



without recess



4

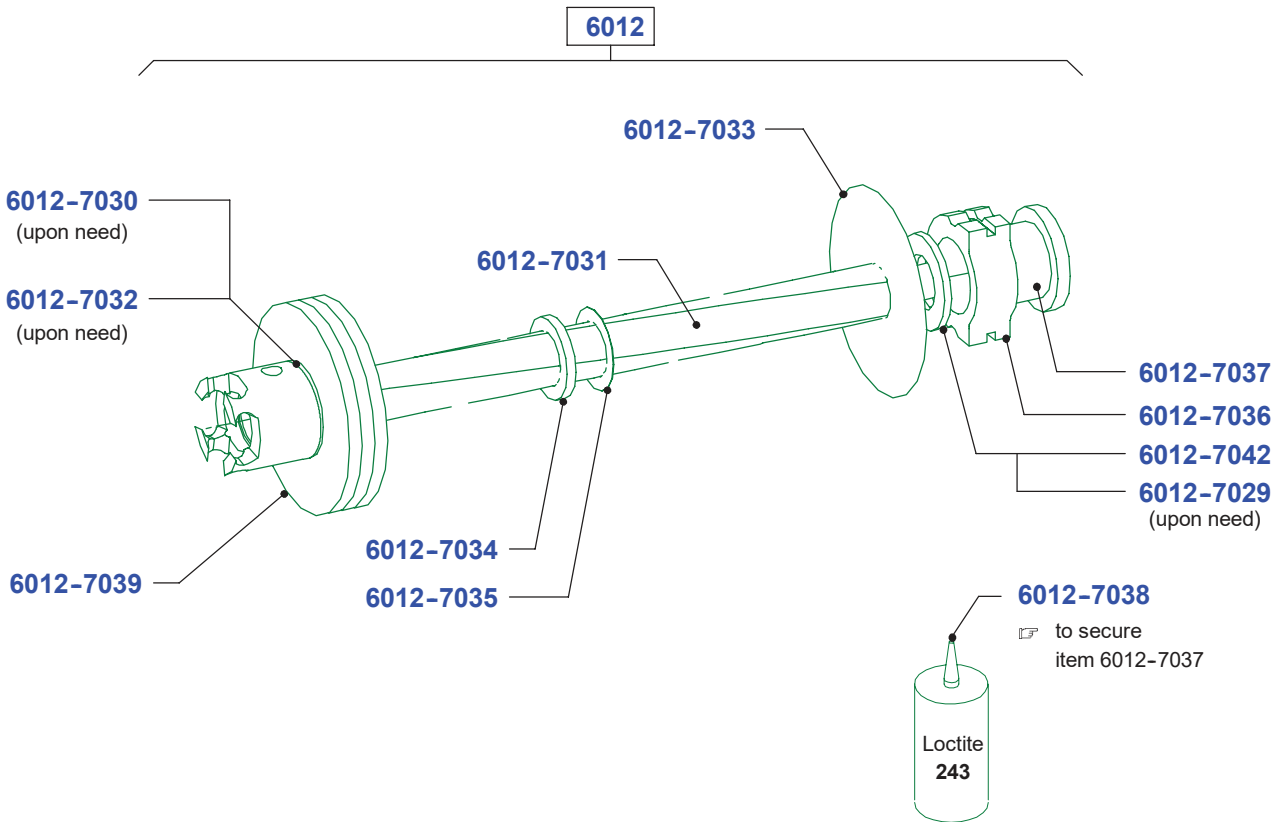


For the left blade roller the blade washer (items 6010-7023, 6020-7023, 6030-7023, 6040-7023, 6050-7023, 6060-8023, 6070-7023 and 6080-7023) are available with and without recess.

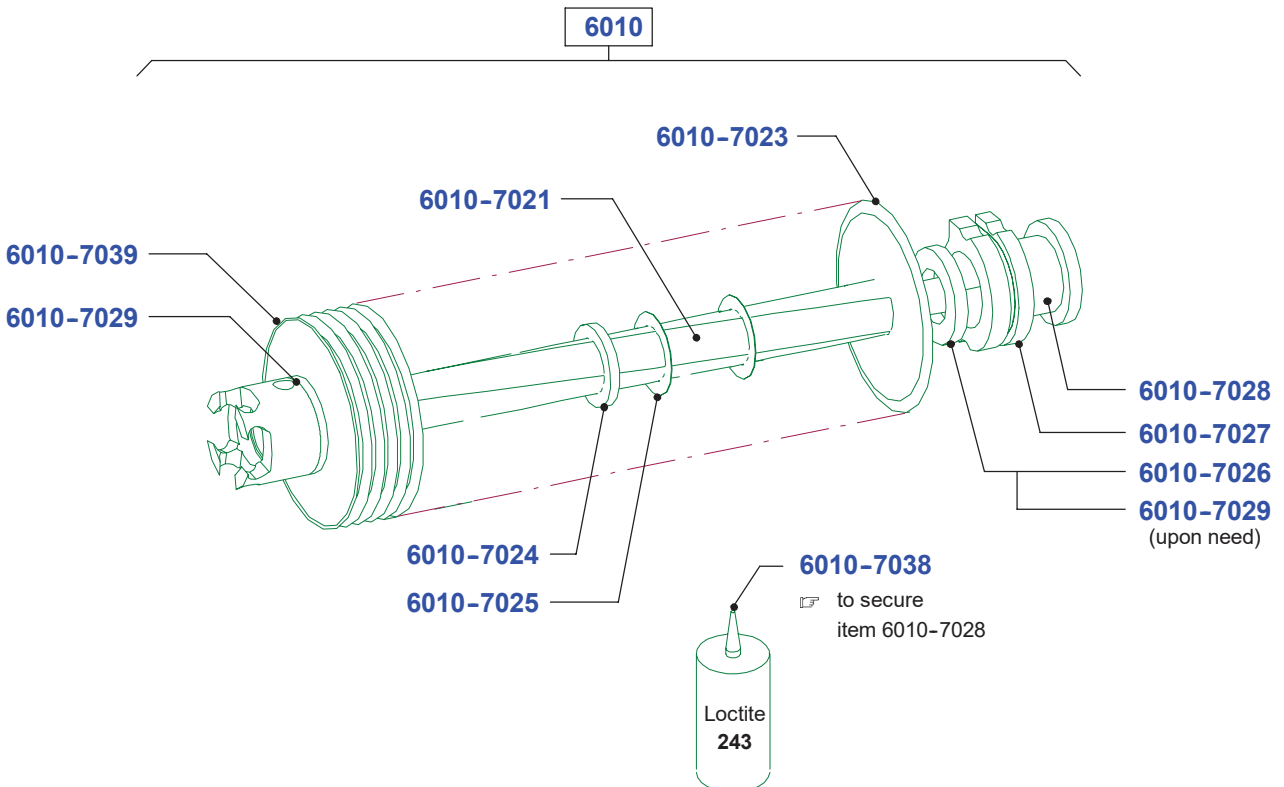
The right blade roller always comes without recess!

Blade roller

S021 - Right half - 4 mm insert

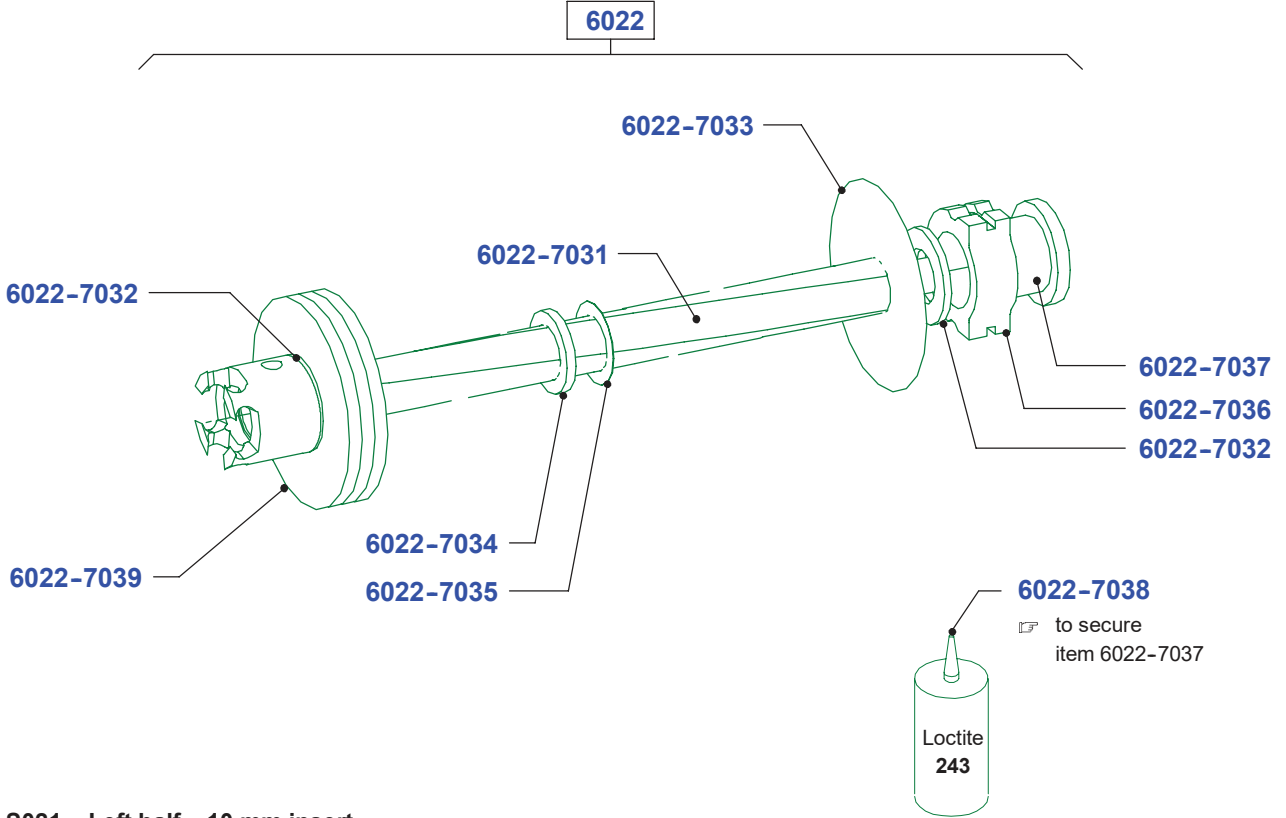


S021 - Left half - 4 mm insert

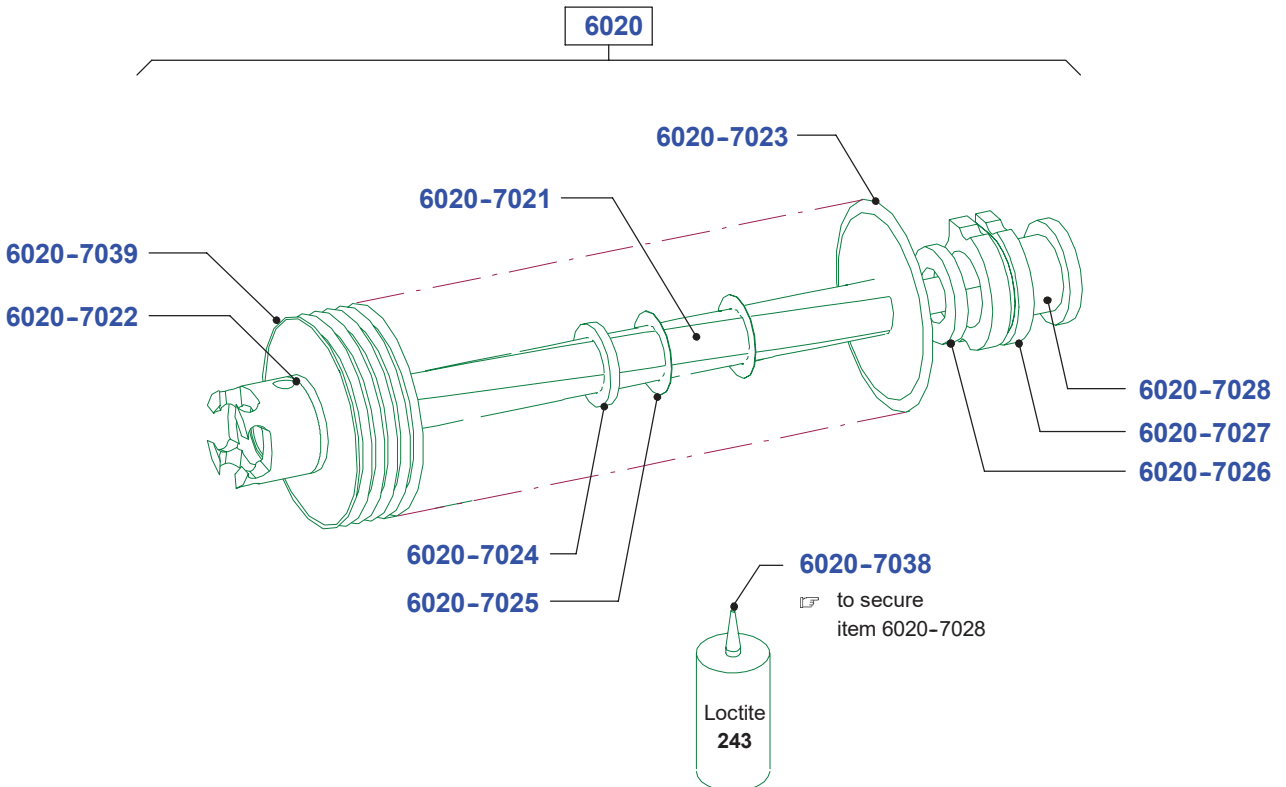


Blade roller

S021 - Right half - 10 mm insert

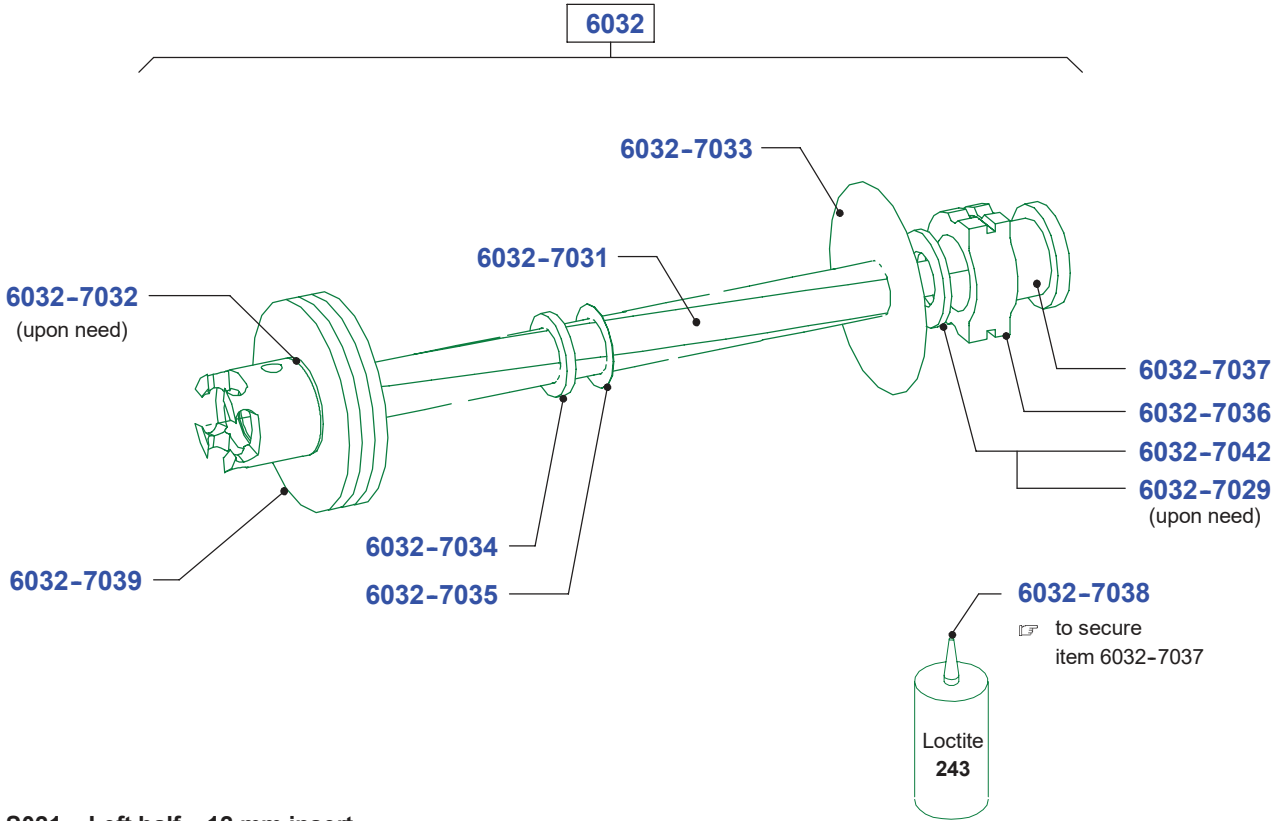


S021 - Left half - 10 mm insert

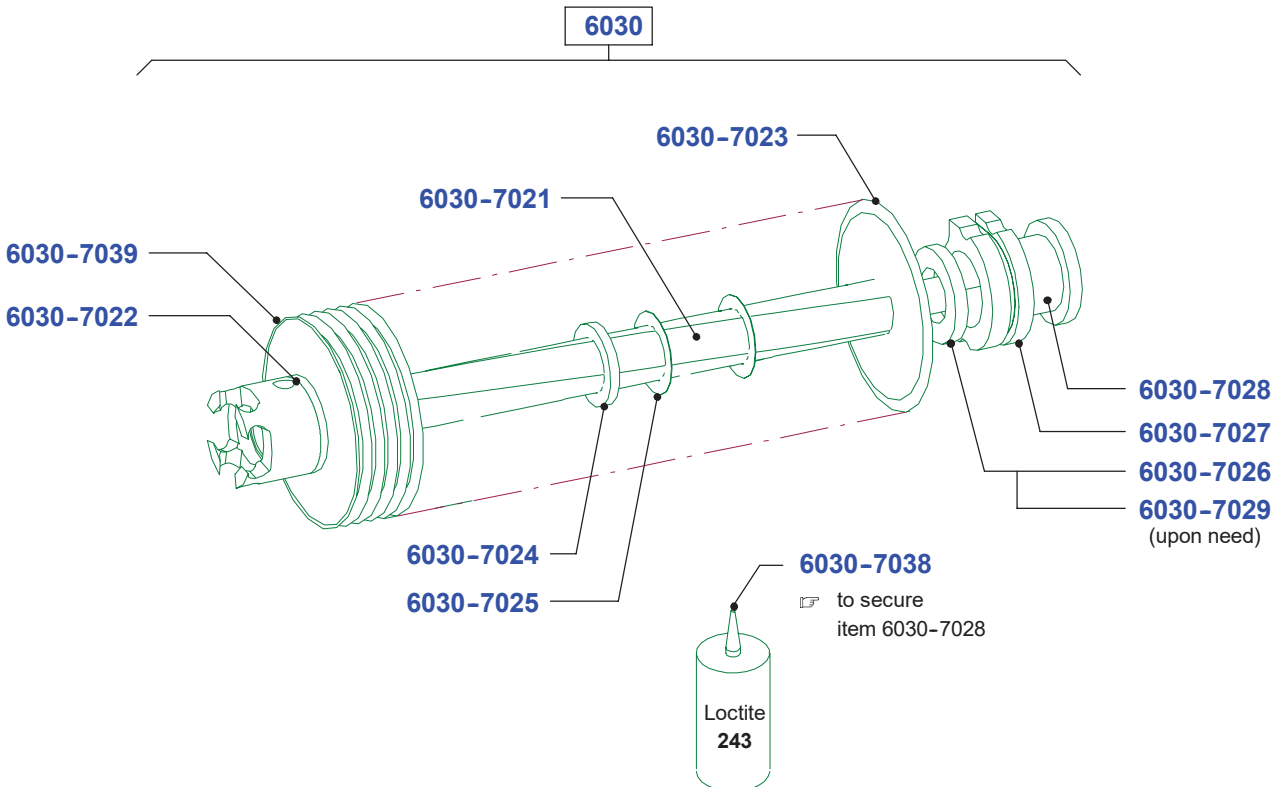


Blade roller

S021 - Right half - 12 mm insert

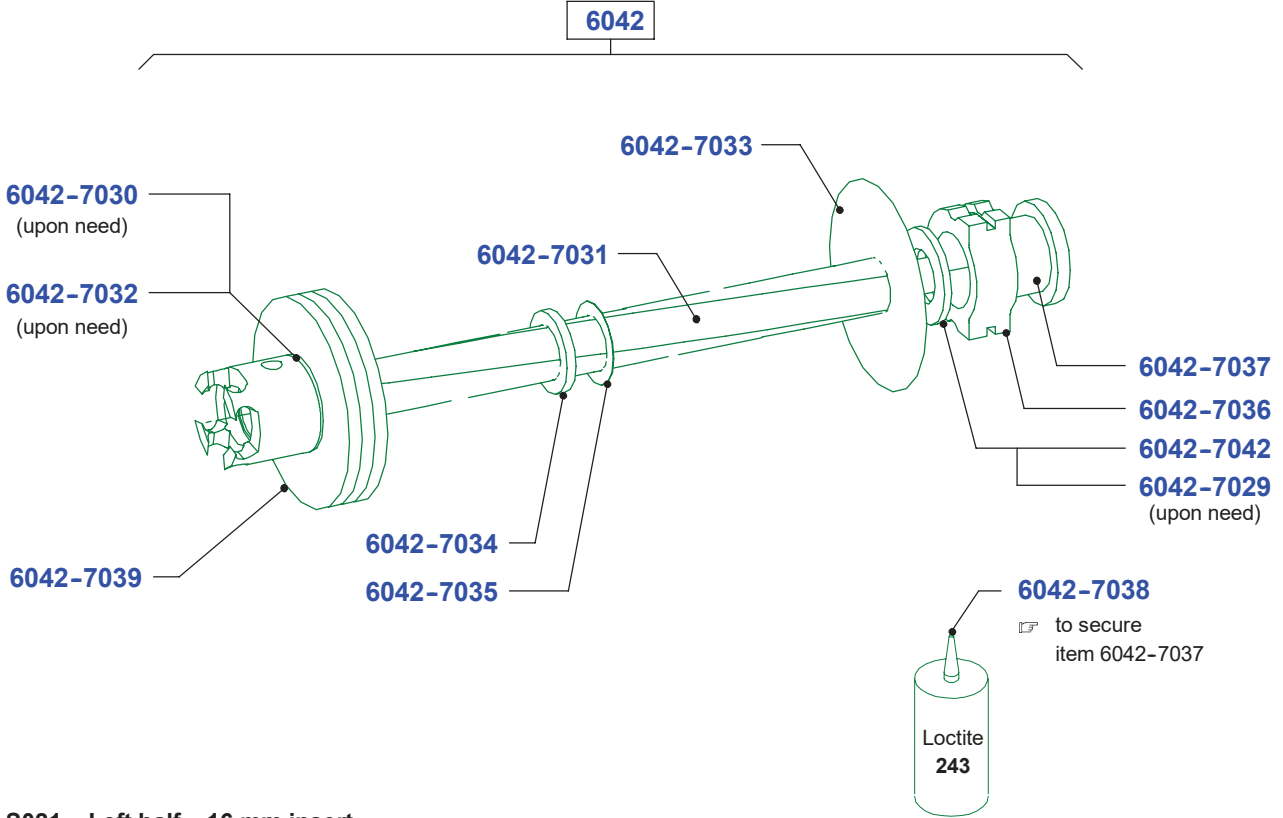


S021 - Left half - 12 mm insert

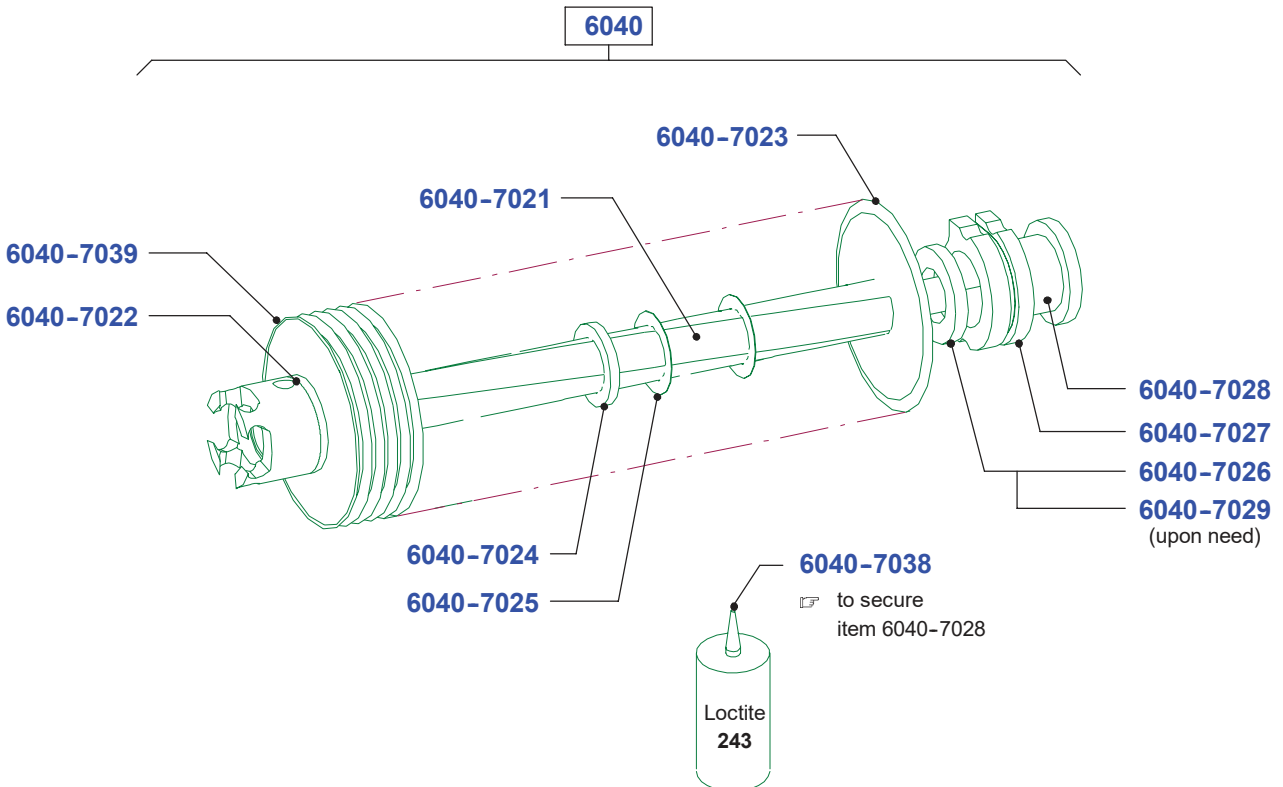


Blade roller

S021 - Right half - 16 mm insert

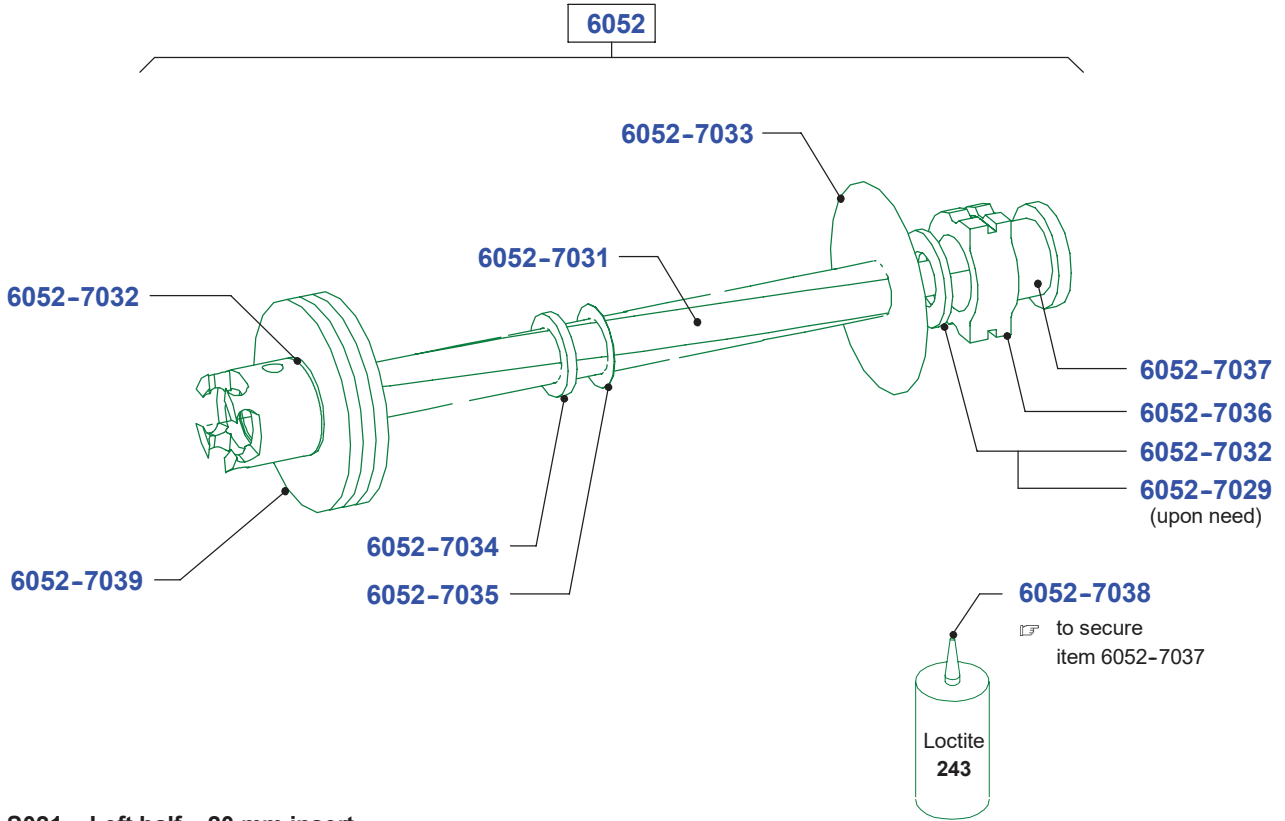


S021 - Left half - 16 mm insert

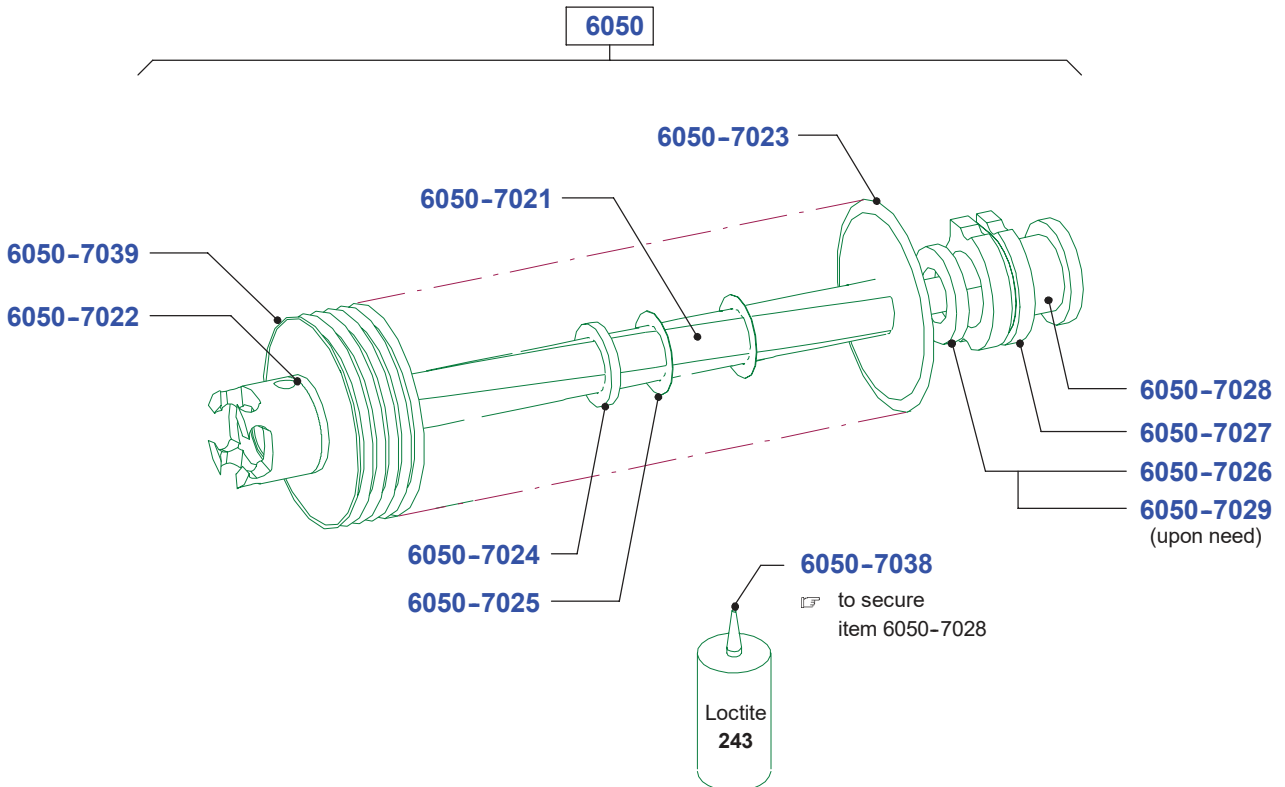


Blade roller

S021 - Right half - 20 mm insert

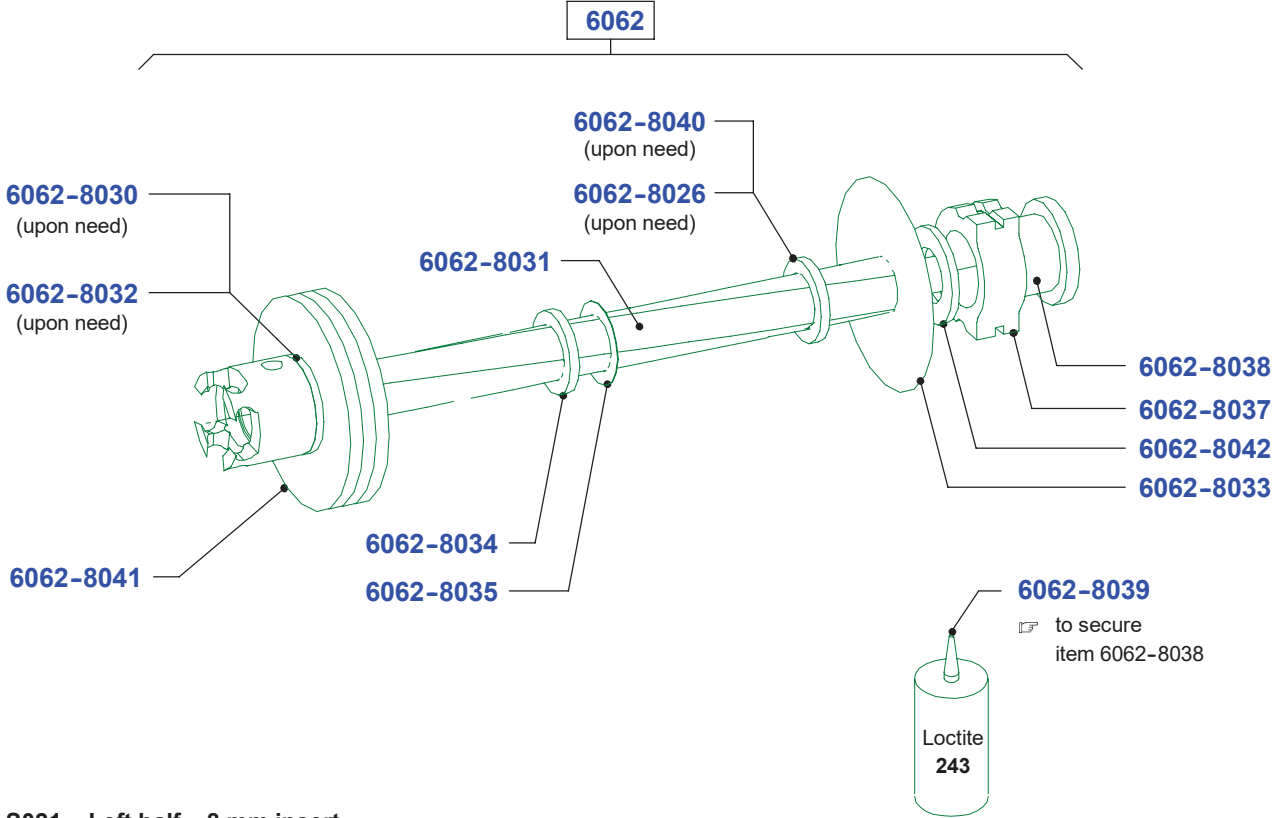


S021 - Left half - 20 mm insert

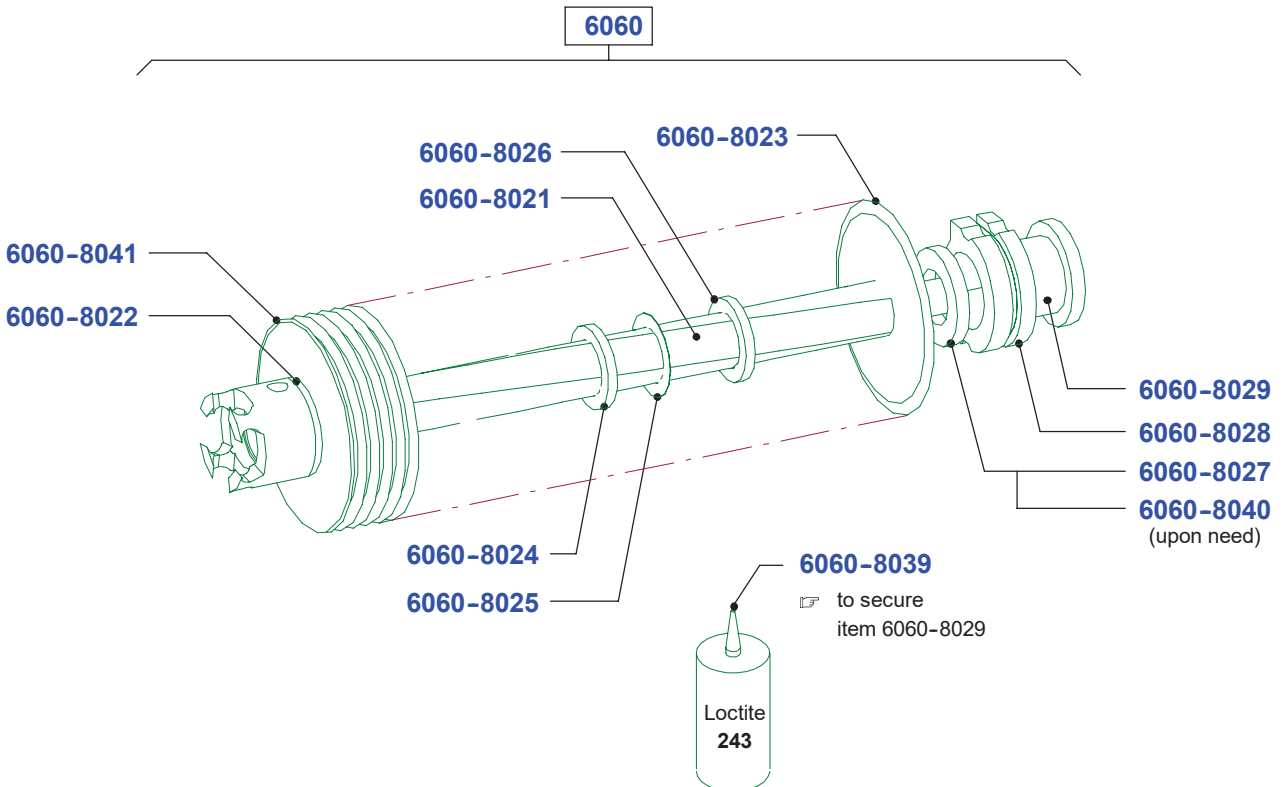


Blade roller

S021 - Right half - 8 mm insert



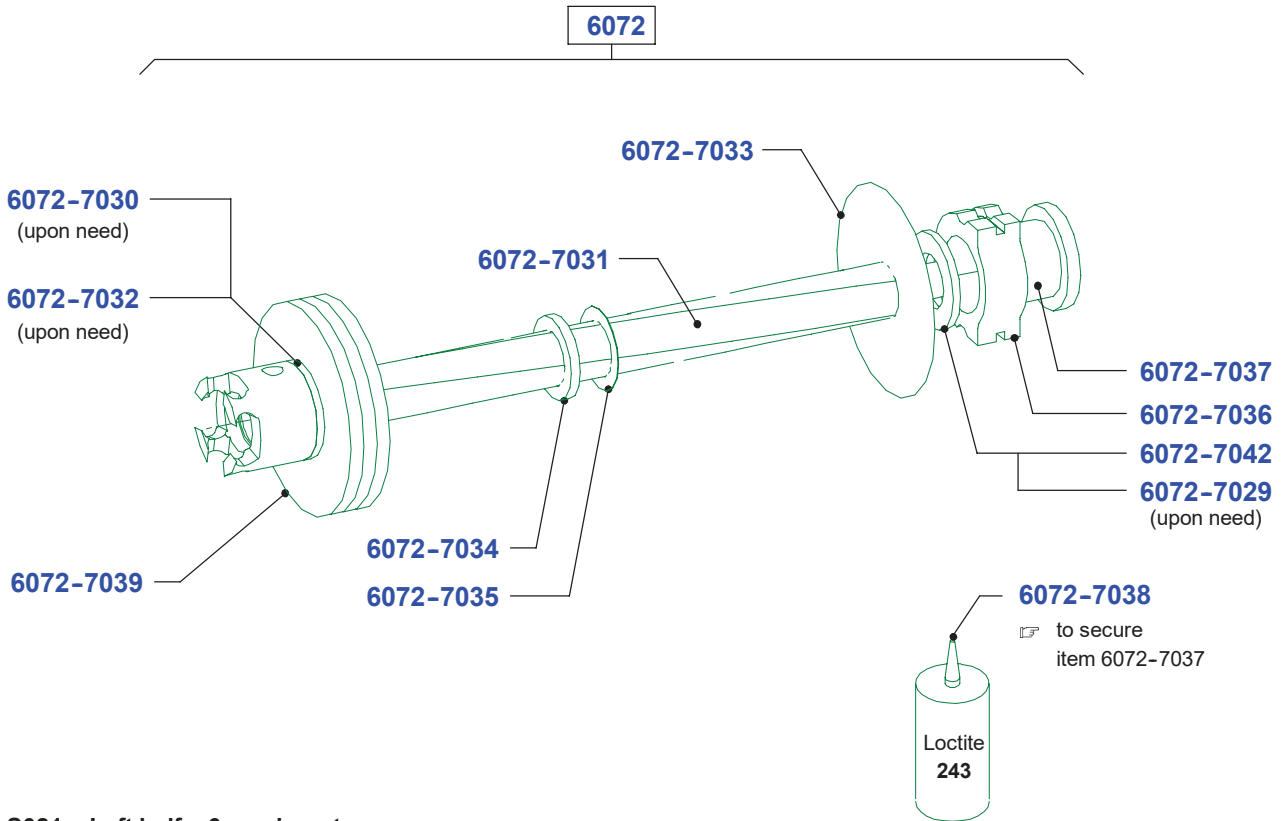
S021 - Left half - 8 mm insert



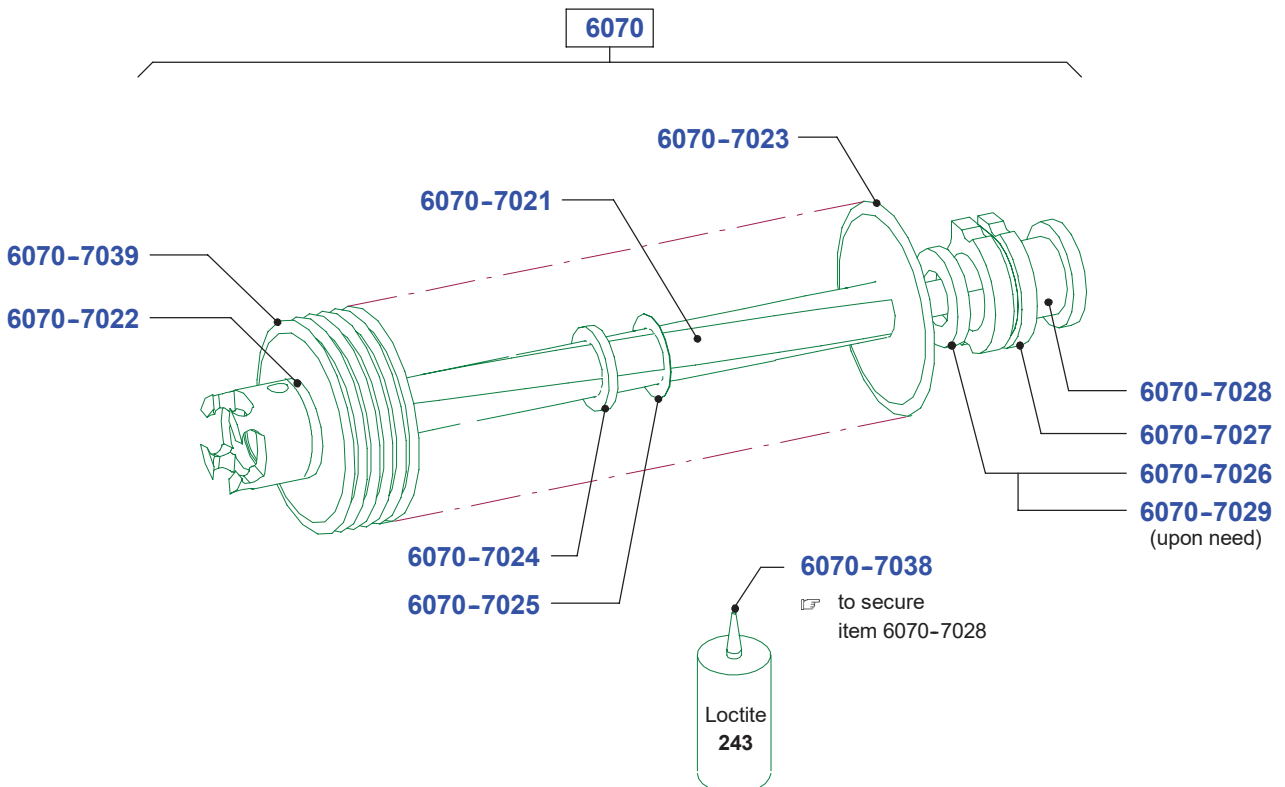
4

Blade roller

S021 - Right half - 6 mm insert

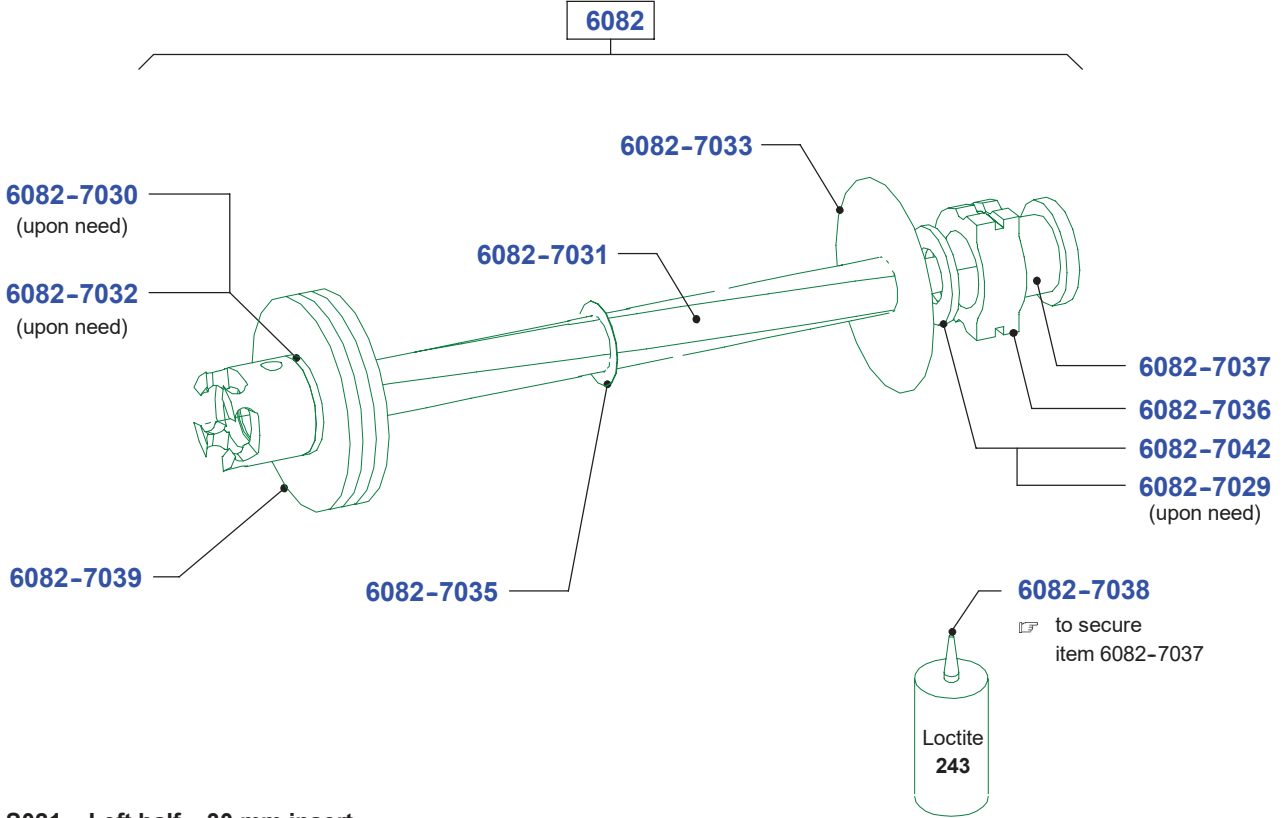


S021 - Left half - 6 mm insert

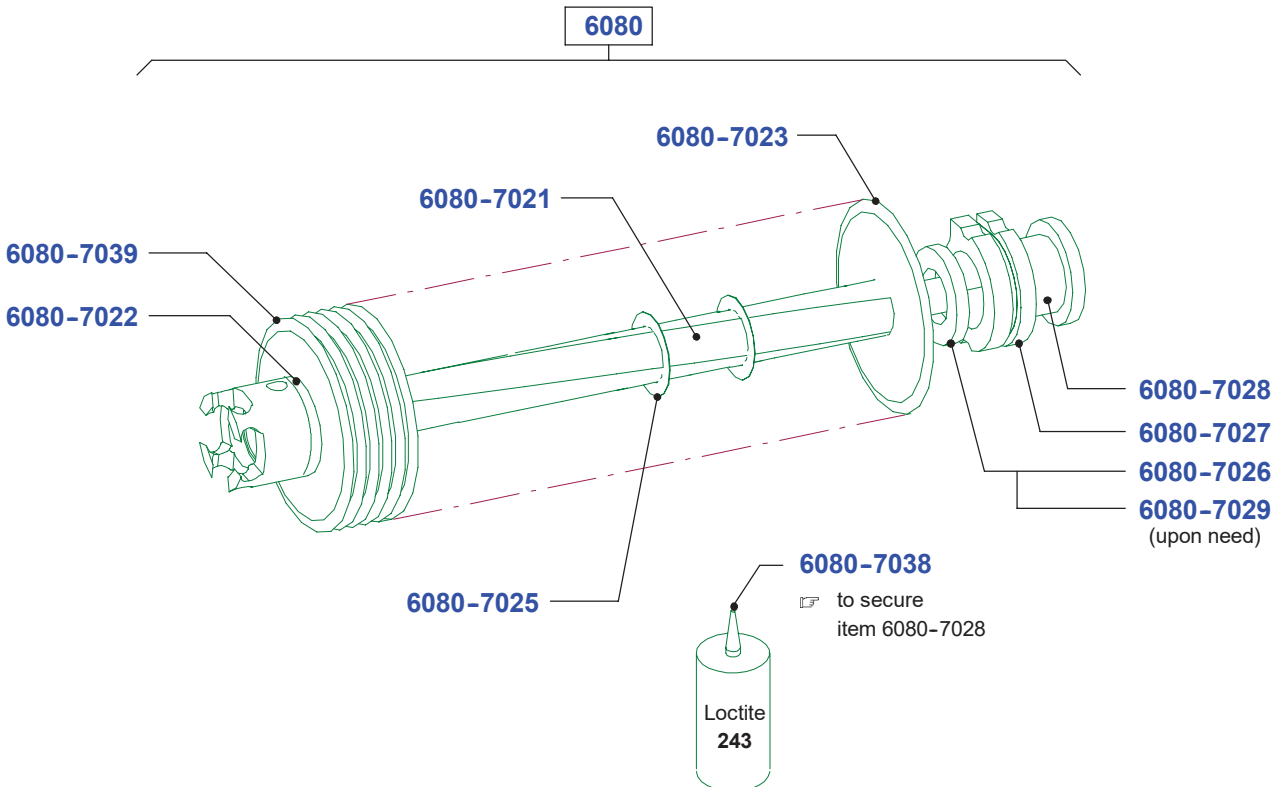


Blade roller

S021 - Right half - 30 mm insert



S021 - Left half - 30 mm insert

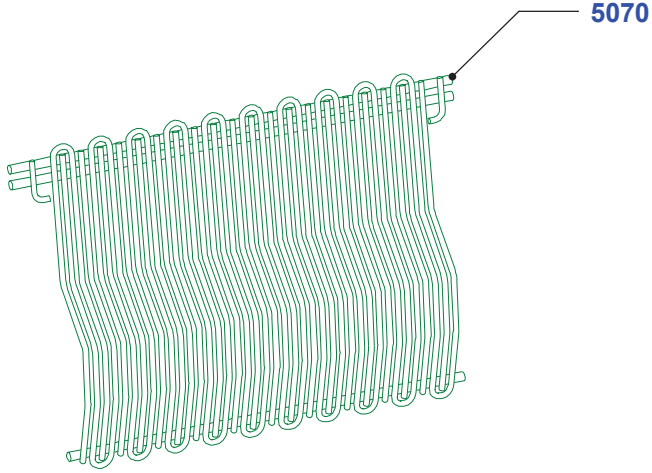


4

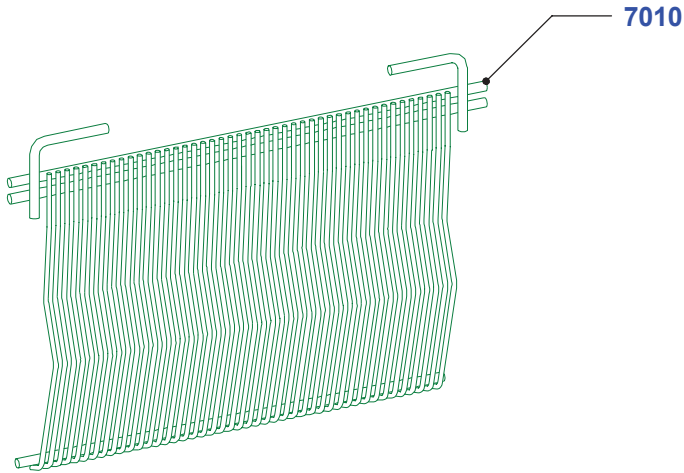
Series (code No.) 90.134	Spare parts list No. 073.98.3.1004	S111 plus	Page of drawing 21
------------------------------------	--	------------------	------------------------------

Stripper and discharge stripper

Stripper for S011 and S012



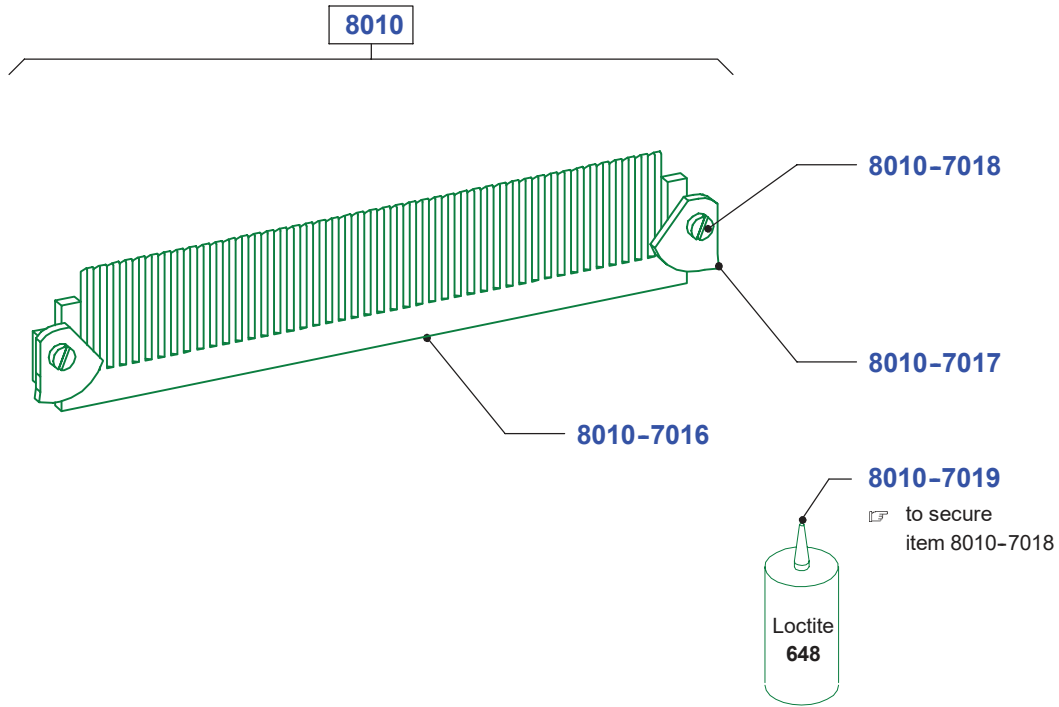
Stripper for S021



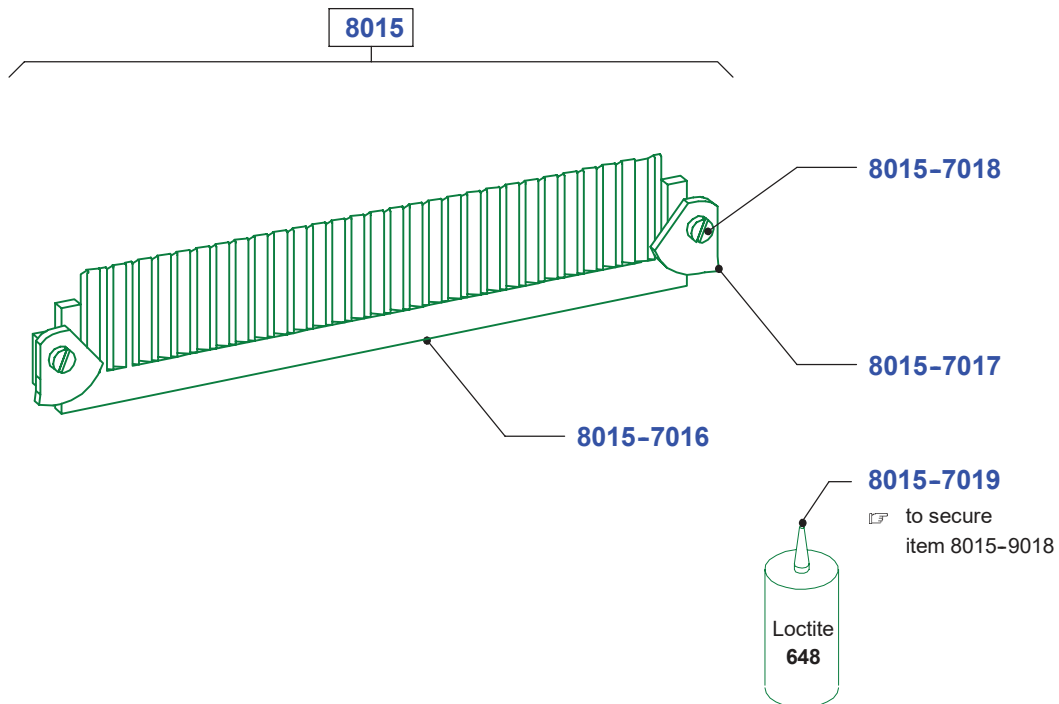
Page of drawing 22	S111 plus	Spare parts list No. 073.98.3.1004	Series (code No.) 90.XXX
------------------------------	------------------	--	------------------------------------

Stripper and discharge stripper

Discharge stripper for S021 (4 and 8 mm)

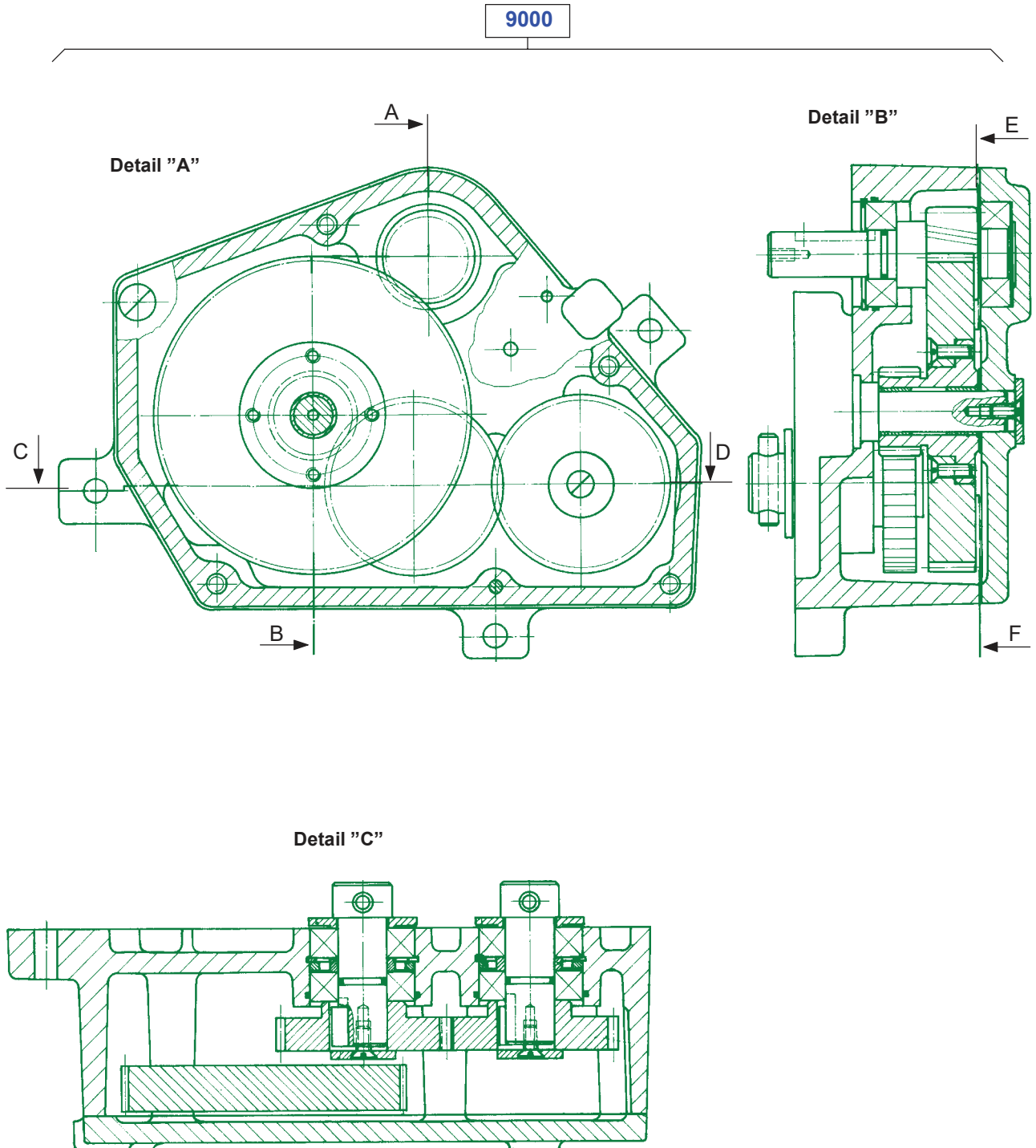


Discharge stripper for S021 (6 mm)



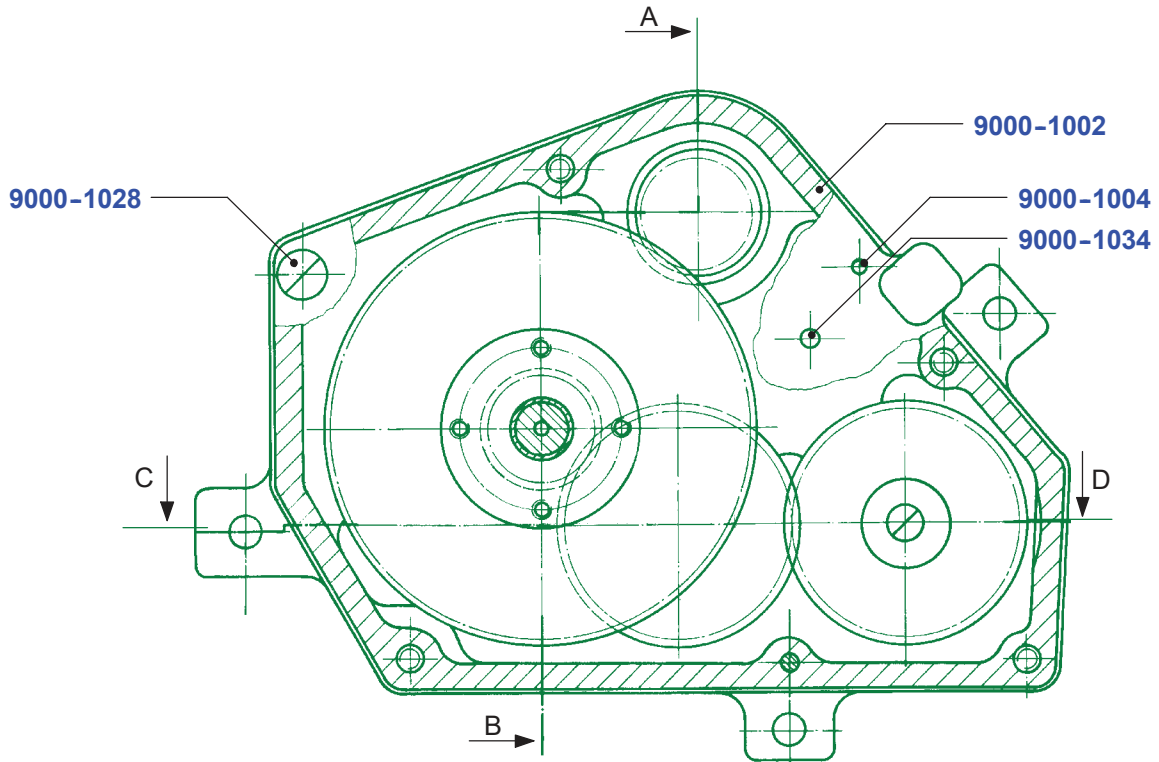
Gear unit

Overall view

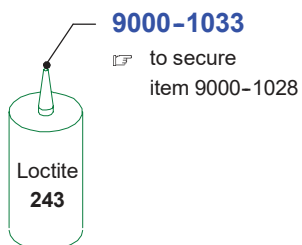


Gear unit

Detail "A"

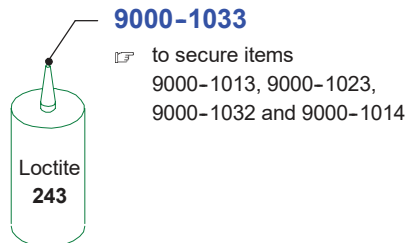
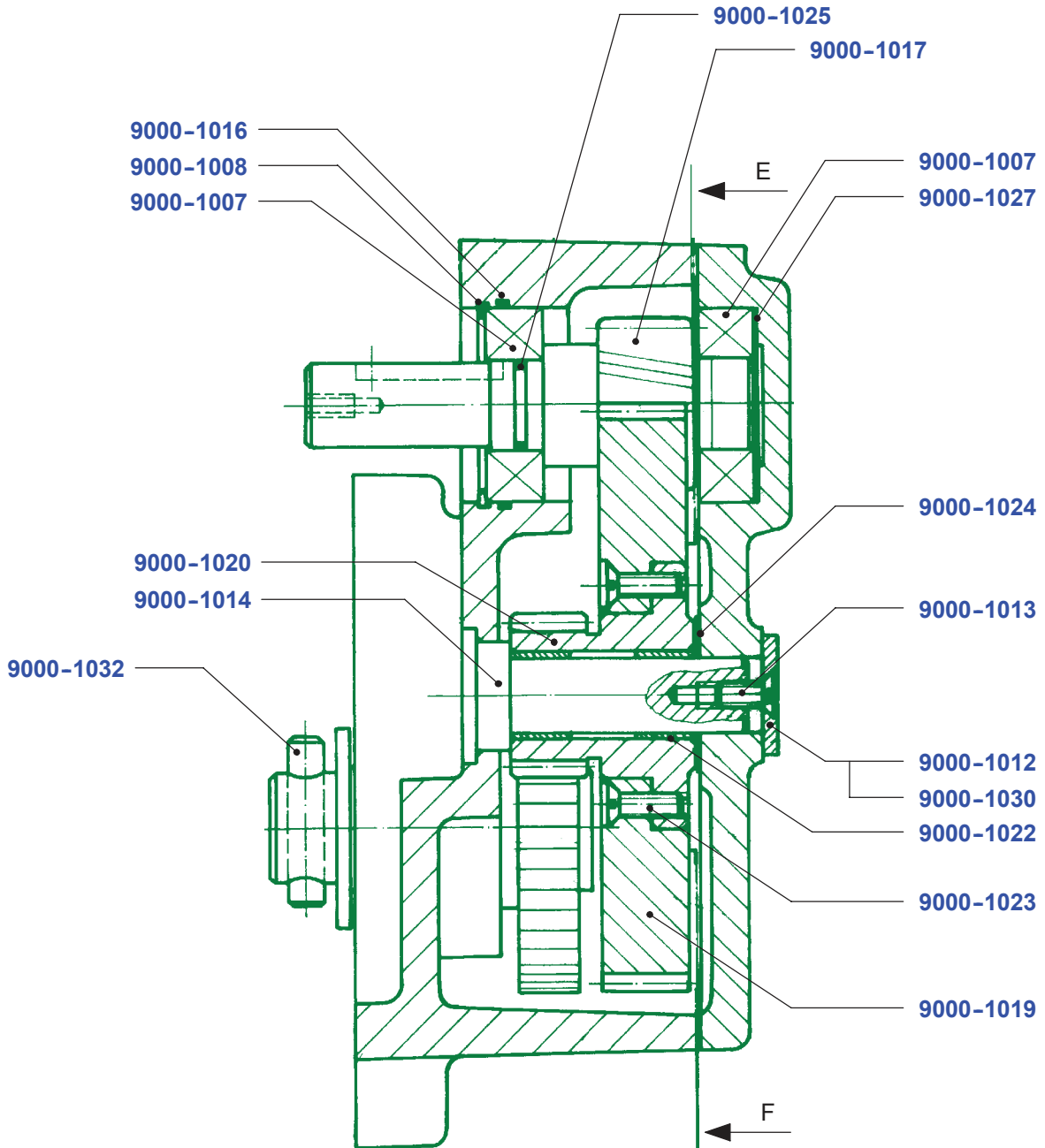


4



Gear unit

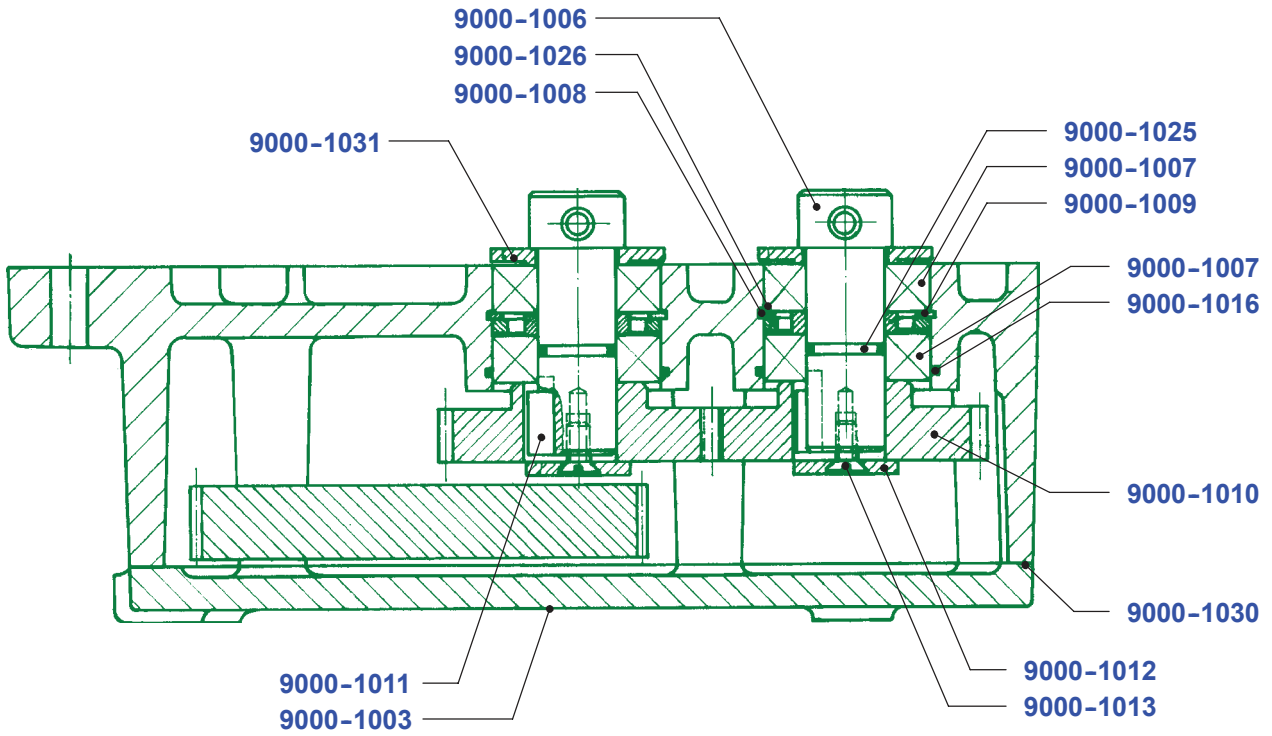
Detail "B"



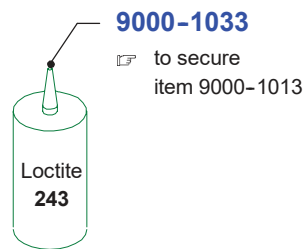
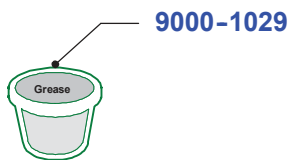
Page of drawing 26	S111 plus	Spare parts list No. 073.98.3.1004	Series (code No.) 90.XXX
------------------------------	------------------	--	------------------------------------

Gear unit

Detail "C"

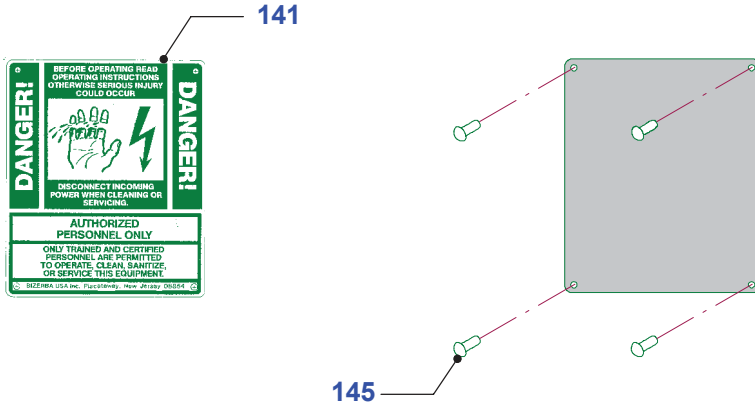


4

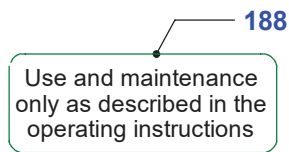


Plates and operating instructions

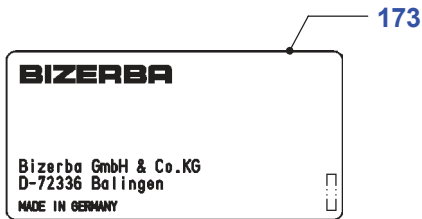
Danger sign



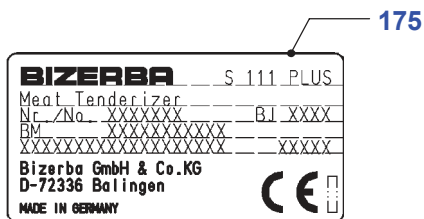
Reference plate



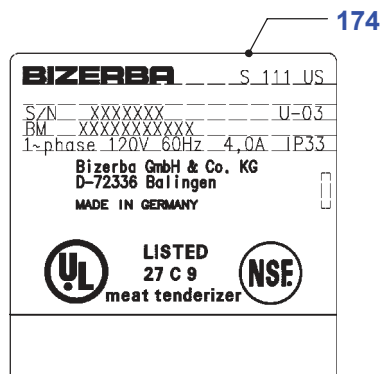
Performance plate neutral (please submit device no.)



Performance plate

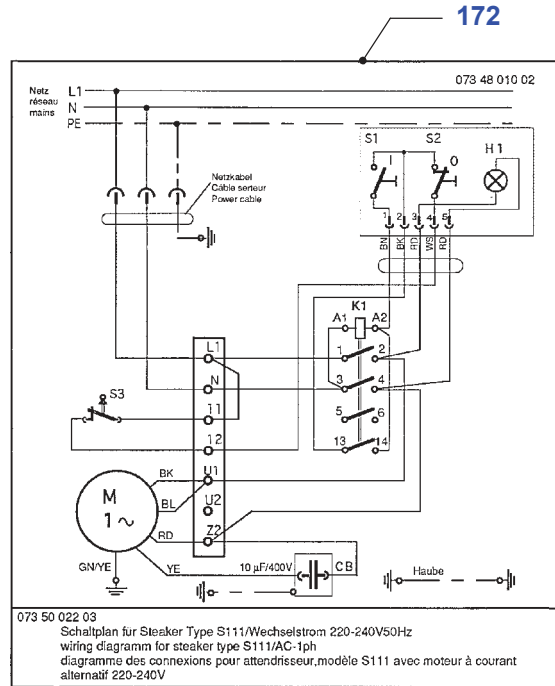


Performance plate USA/CAN



Plates and operating instructions

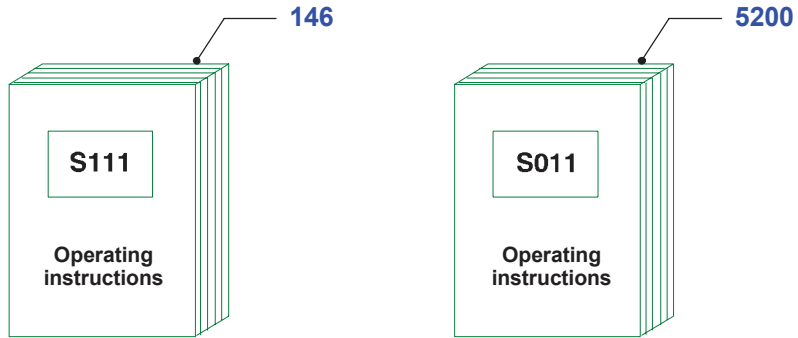
Adhesiv. foil - circuit plan for steaker S 111 - Alternat. Current



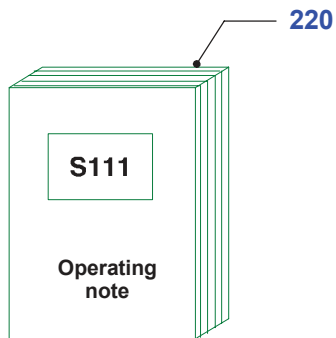
Series (code No.) 90.134	Spare parts list No. 073.98.3.1004	S111 plus	Page of drawing 29
------------------------------------	--	------------------	------------------------------

Plates and operating instructions

Operating instructions

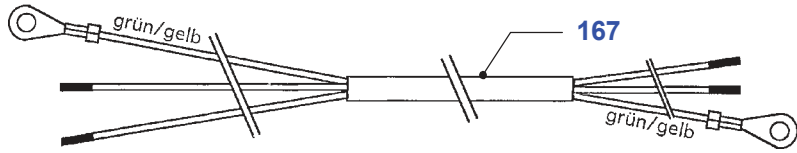


Operating note

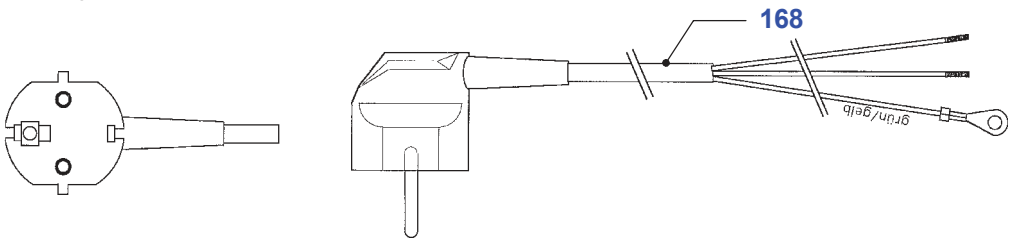


Mains supply lines

Mains supply line AC without plug

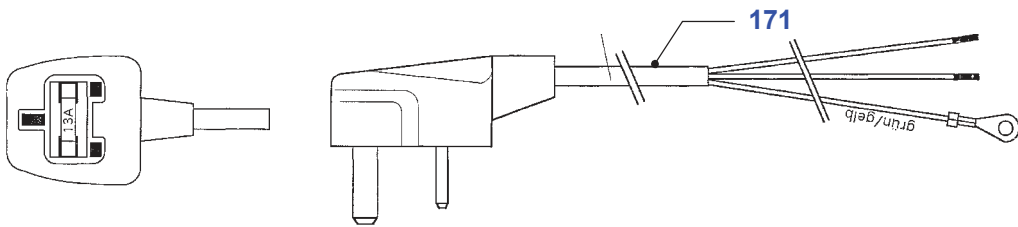


Mains supply line AC - EURO

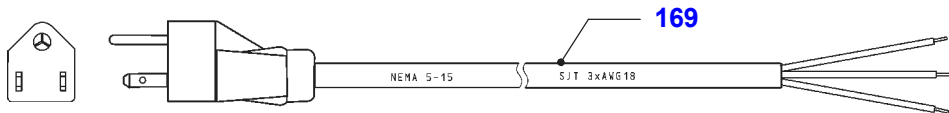


4

Mains supply line AC - England



Mains supply line AC - USA/CAN



Mains supply line AC - Australia

