

Meat and bone saw

FK 32



Meat and bone saw

FK 32

Content of drawings	Page of drawing
Basic parts and circuit	1
ON/OFF switch+motor	3
Guide pulley+bearing for wheel scraper	4
Saw blade guide top	6
Sliding table	7
Plates and operating instructions	8
Last page of drawings	8

12-2 Rimmed drawing position numbers mark the assemblies of spare parts. The spare parts, which may be ordered, are marked in a detailed way elsewhere in the spare parts list.

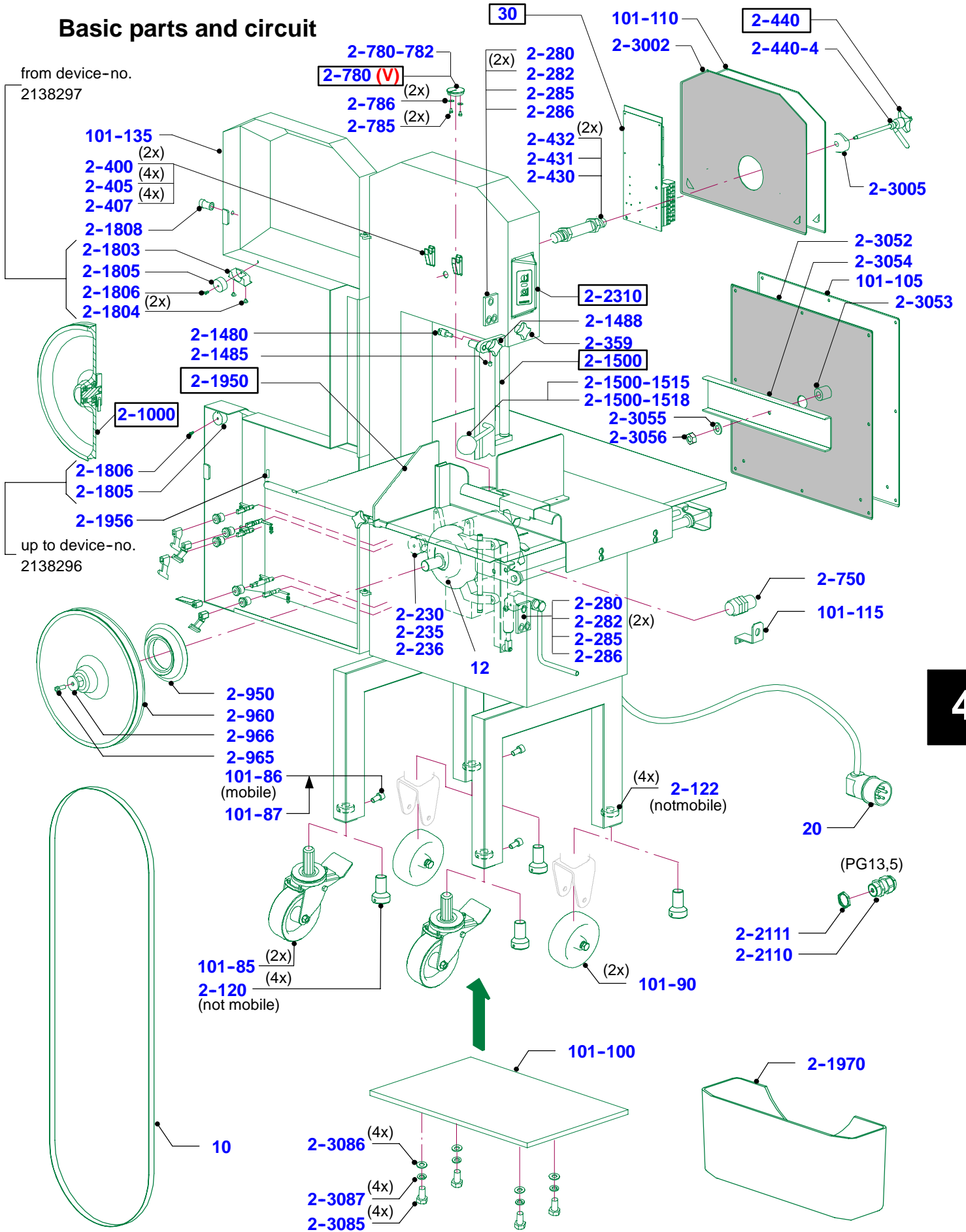
The spare parts marked with „Q” are important for the verification, i. e. at the assembly of these parts the verification seal is destroyed. These parts can be purchased only at authorized Bizerba representations.

On the image and text section spear and wear parts are highlighted with (V).

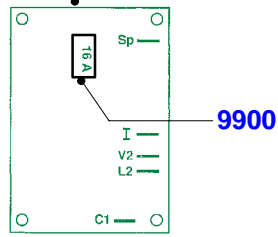
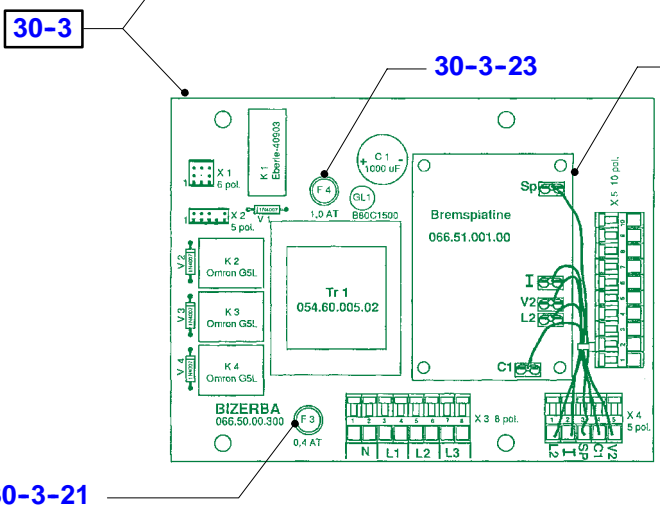
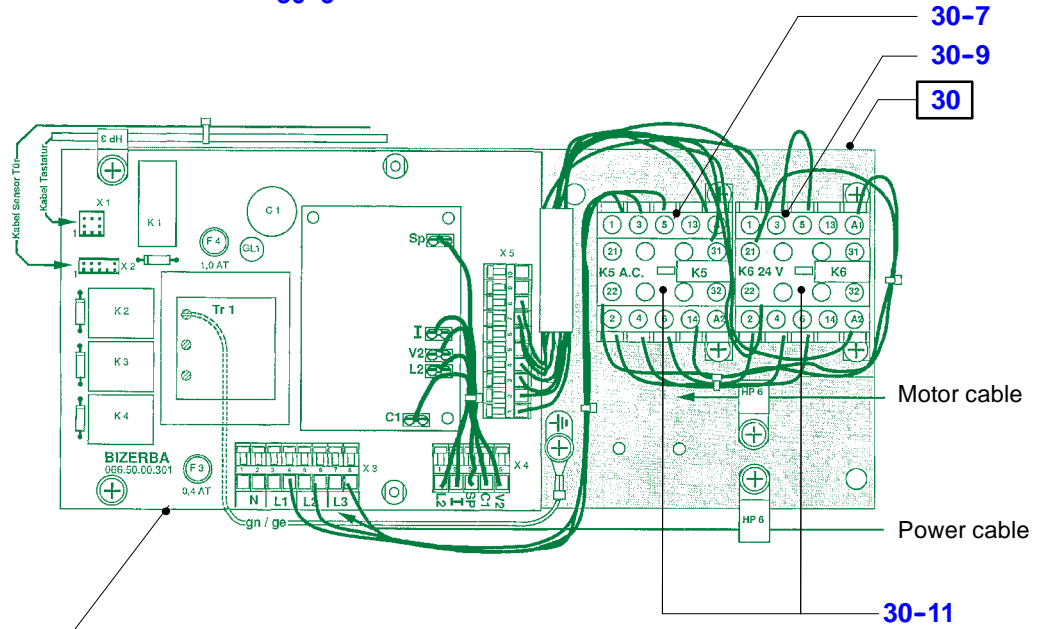
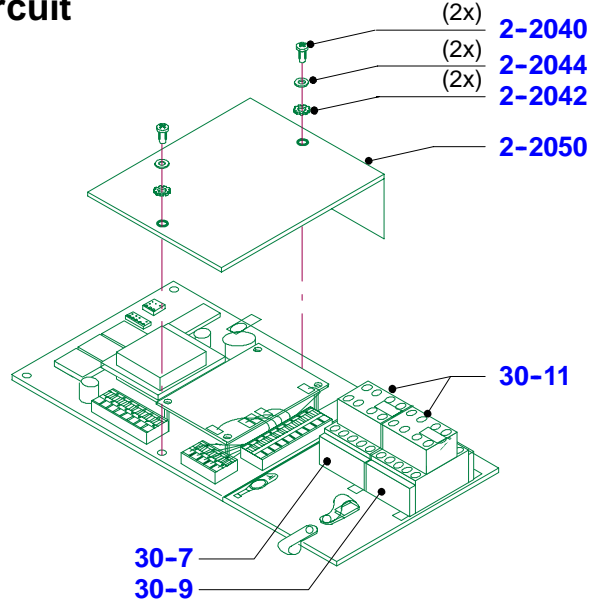
The content of the parts number list is located before the text pages in the rear part of the spare parts list.

FK 32	Spare parts list No. 067.98.3.1004	Series (code No.) 90.146
--------------	--	------------------------------------

Basic parts and circuit

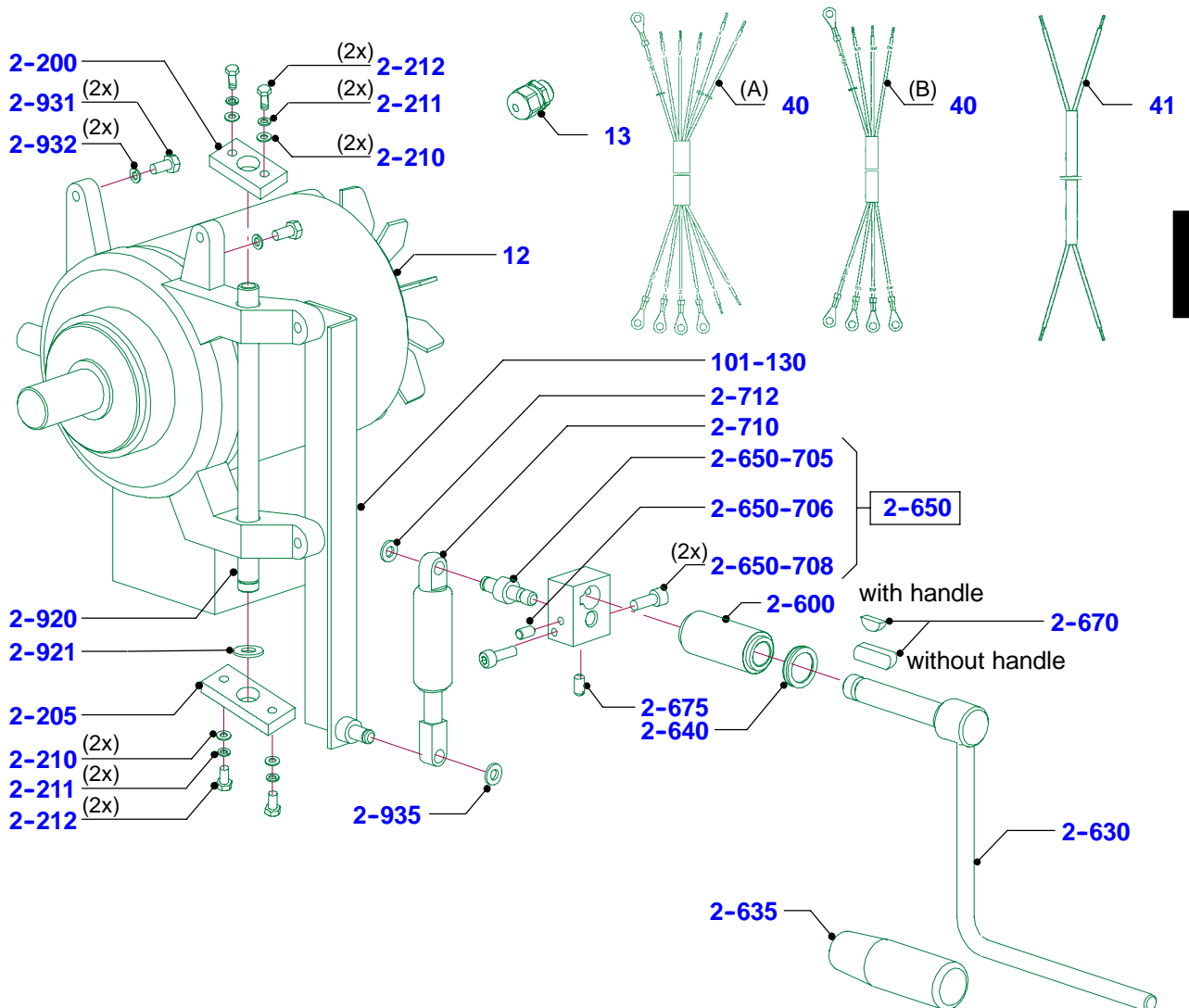
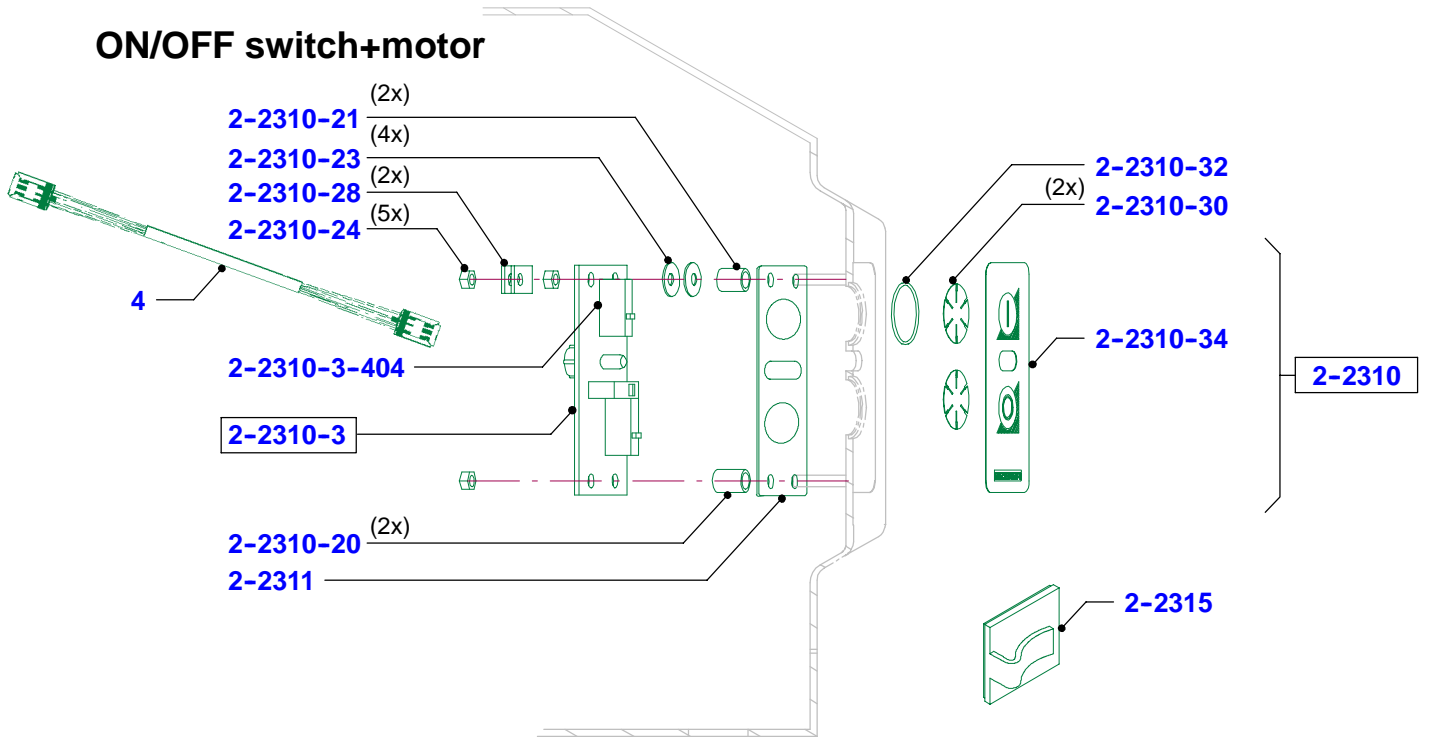


Basic parts and circuit

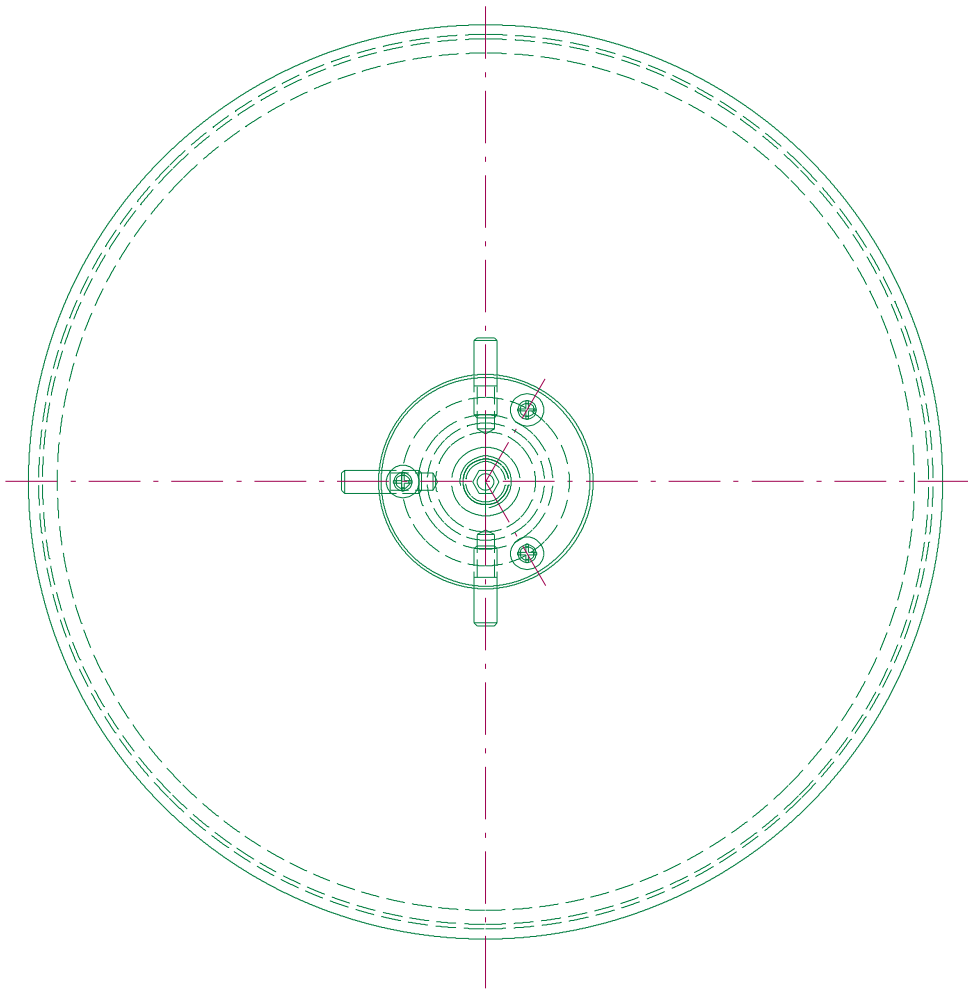
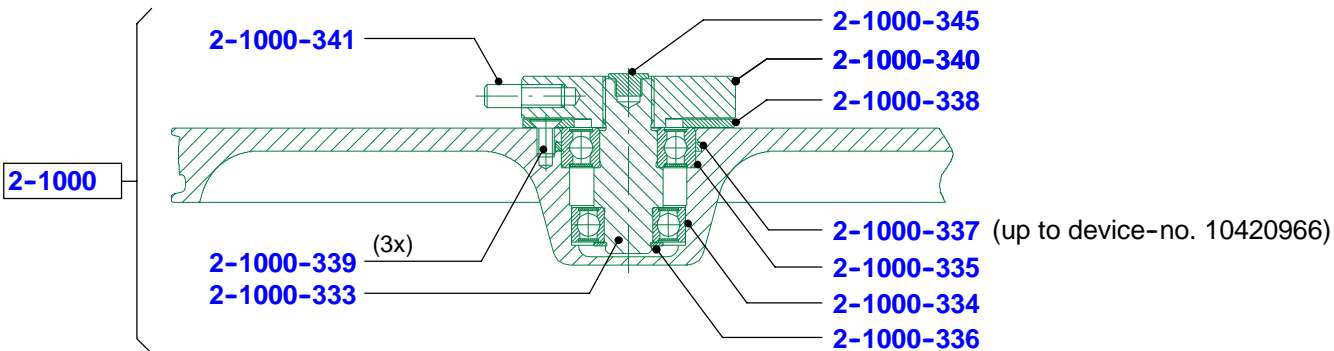


4

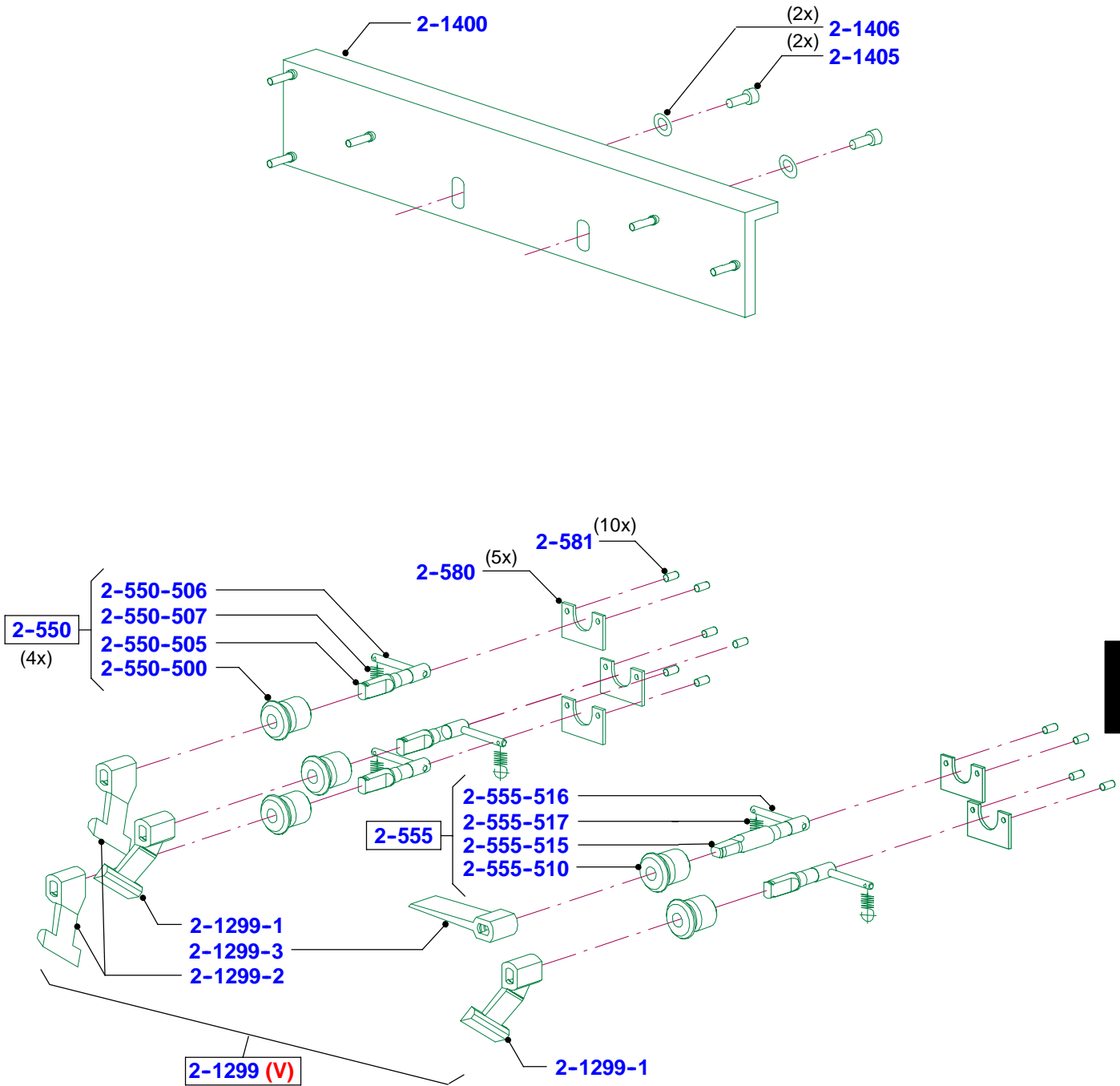
ON/OFF switch+motor



Guide pulley+bearing for wheel scraper

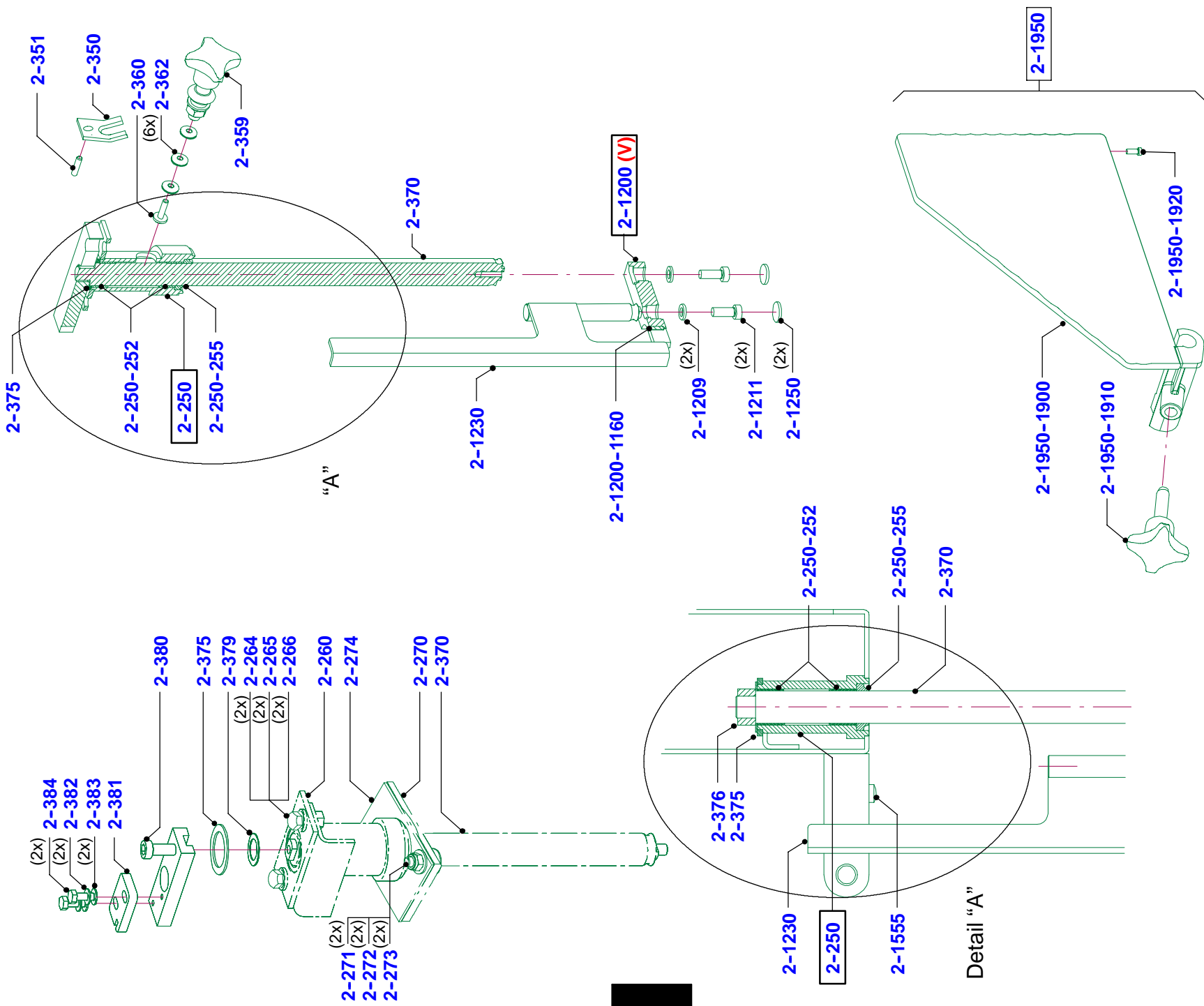


Guide pulley+bearing for wheel scraper

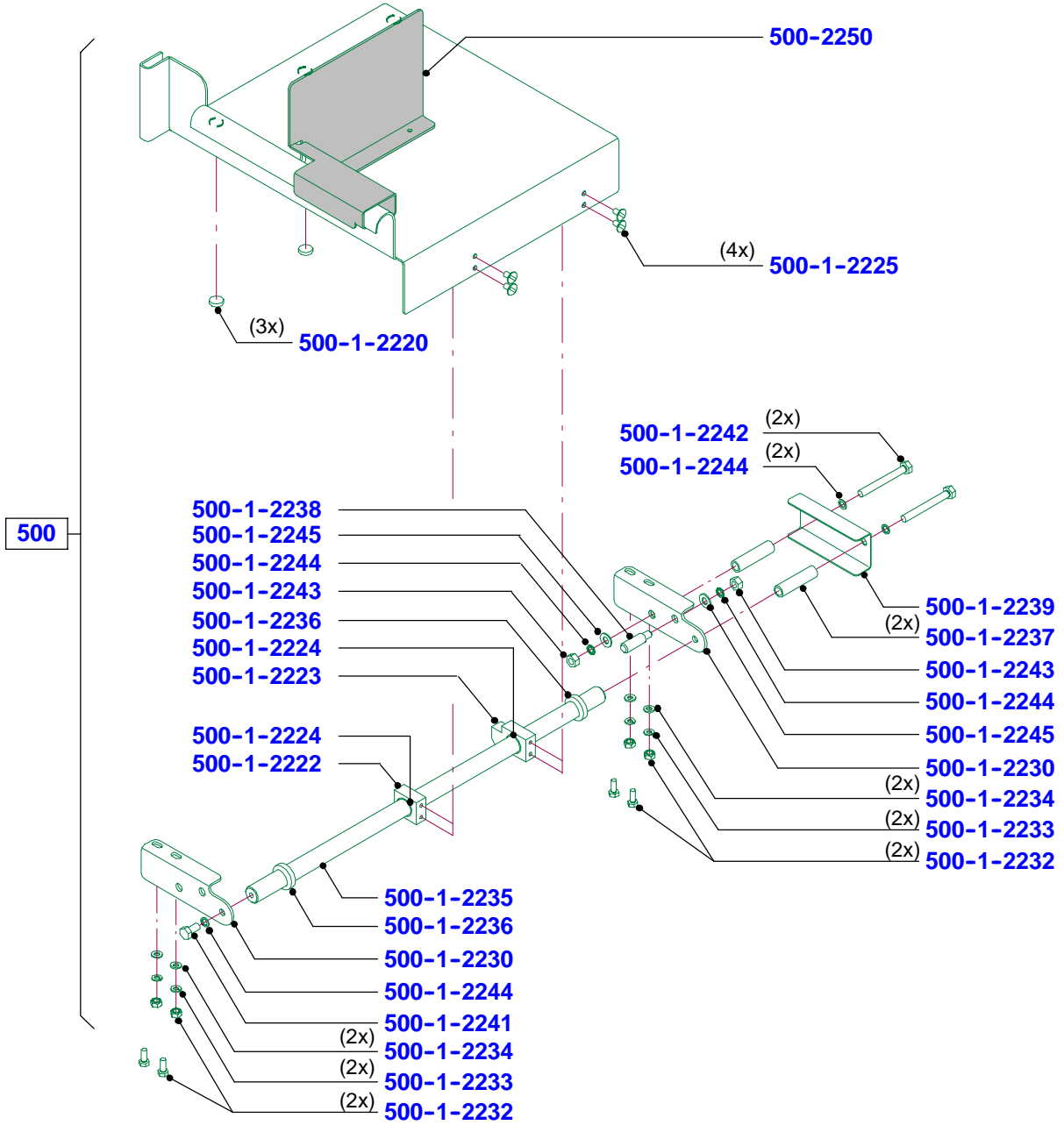


Saw blade guide top

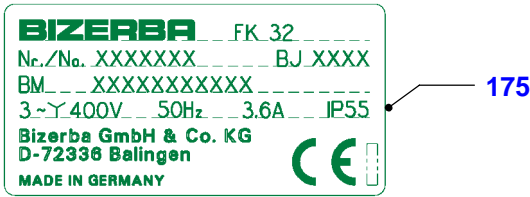
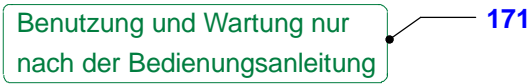
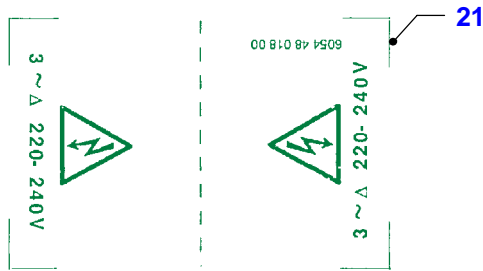
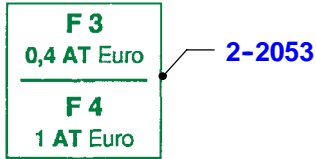
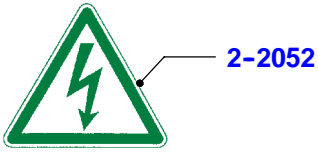
from device-no. 140 5297



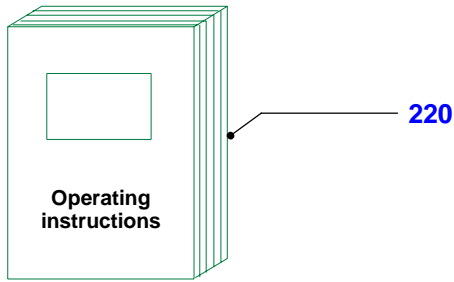
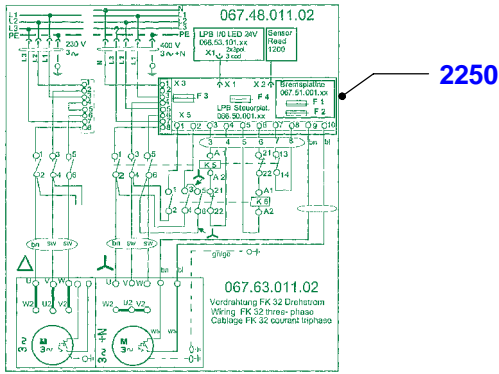
Sliding table



Plates and operating instructions



4



Meat and bone saw

FK 32

Text content	Text page
Basic parts	1
Basic parts: -Guide pulley, deflector	3
Basic parts: -ON/OFF switch	4
Band saw blade, motor, power cable, circuit, stand purchase	5
Plates, operating instructions, sliding table	6
Last text page	6

The spare parts marked with „Q” are important for the verification, i. e. at the assembly of these parts the verification seal is destroyed. These parts can be purchased only at authorized Bizerba representations.

On the image and text section spear and wear parts are highlighted with (V).

FK 32	Spare parts list No. 067.98.3.1004	Series (code No.) 90.146
--------------	--	------------------------------------

4

Series (code No.) 90.146	Spare parts list No. 067.98.3.1004	FK 32	Text page 1
------------------------------------	--	--------------	-----------------------

Number in drawing	Order number	Piece	Designation	from status onwards
2		001	BASIC PARTS FK32	
2-120	60650001100	004	FOOT SCREW M 24X1.5	
2-122	60650001200	004	NUT	
2-200	60660010500	001	THREADED PLATE TOP	
2-205	60660010600	001	THREADED PLATE BOTTOM	
2-210	56765060000	004	WASHER DIN 9021-6,4-A2-70	
2-211	57767060000	004	SPR. LOCK WASHER DIN 126-A6-FST	
2-212	57347120000	004	HEXAGON SCREW DIN 933-M6X12-8.8	
2-230	60660010800	001	RING	
2-235	56456800000	001	HEXAGON NUT DIN 934-M8-X5CRNI18-10	
2-236	56739080000	001	WASHER DIN 125-A 8,4-A2-70	
2-250		001	BEARING BUSHING CPL.	
2-250-252	50001090000	002	BUSH 22X25X12	
2-250-255	50003440000	001	DEFLECTOR RING A22/30 7/4	
2-260	60670003201	001	PLATE	
2-264	57347160000	002	HEXAGON SCREW DIN 933-M6X16-8.8	
2-265	57767060000	002	SPR. LOCK WASHER DIN 126-A6-FST	
2-266	56765060000	002	WASHER DIN 9021-6,4-A2-70	
2-270	60670003402	001	PLATE	
2-271	56787290000	002	MUSHROOM HEAD BOLT DIN 603-M6X20-A2	
2-272	56765060000	002	WASHER DIN 9021-6,4-A2-70	
2-273	56400860000	002	LOCKNUT DIN 985-M6-A2-70	
2-274	60670003500	001	FIXING PLATE	
2-280	60660006500	002	MAGNET HOLDER	
2-282	50373970000	004	DISK MAGNET 15X8	
2-285	56456600000	002	HEXAGON NUT DIN 934-M6-A2-70	
2-286	57767060000	002	SPR. LOCK WASHER DIN 126-A6-FST	
2-350	60660004600	001	FISH PLATE	
2-351	56083790000	001	SETSCREW DIN 914-M4X12-45H	
2-359	60670004900	001	BEARING FOR LOCKING BRAKE	
2-360	60660004800	001	BOLT	
2-362	50281080000	006	DISC SPRING DIN 2093-12X4,2X0,6	
2-370	60670002701	001	SHAFT (FROM DEVICE-NO. 140 5297)	
2-375	60670011300	001	WASHER	
2-376	60670003603	001	ARM (FROM DEVICE-NO. 140 5297)	
2-379	56709960000	001	SHIM RING DIN 988 12X18X0,5	
2-380	57747310000	001	SOCKET HEAD SCREW DIN 7984-M6X12-8.8	
2-381	60670006300	001	GUID. PLATE	
2-382	57767040000	002	SPR. LOCK WASHER DIN 128-A4-FST	
2-383	56739040000	002	WASHER DIN 125-A 4,3-A2-70	
2-384	57429160000	002	HEXAGON SCREW DIN 933-M4X16-A2-70	
2-400	60660014200	002	HOOK	
2-405	56739060000	004	WASHER DIN 125-A 6,4-A2-70	
2-407	57736120000	004	SOCKET HEAD SCREW DIN 912-M6X12-8.8	
2-430	60670003300	001	SLEEVE	
2-431	57767160000	001	SPR. LOCK WASHER DIN 128-A16-FST	
2-432	56470870000	002	HEXAGON NUT DIN 439-BM16X1,5-4	

Bitte unbedingt 11-stellige **Bestell-Nr.** angeben • Please always indicate 11 digit **Order No.** • Absolutement nécessaire d'indiquer **No. de commande** (11 chiffres) • Favorisca specificarci sempre il **N. di ordine** a 11 cifre • Es imprescindible que citen el **No. de pedido** (11 guarismos)

Text page 2	FK 32	Spare parts list No. 067.98.3.1004	Series (code No.) 90.146
-----------------------	--------------	--	------------------------------------

Number in drawing	Order number	Piece	Designation	from status onwards
X	X	X	X	X
2-440	60670001700	001	SCREW, COMPL.	
2-440-4	56085410000	001	CLAMP NUT GN 99.6 63-M8	
2-550	60660004401	004	BEARING FOR WHEEL SCRAPER	
2-550-500	60660003700	001	BUSHING	
2-550-505	60660003900	001	BOLT	
2-550-506	60660004100	001	LEVER	
2-550-507	50998650000	001	TENSION SPRING RZ-053X	
2-555	60660004501	001	BEARING FOR WHEEL SCRAPER	
2-555-510	60660003700	001	BUSHING	
2-555-515	60660004000	001	BOLT	
2-555-516	60660004100	001	LEVER	
2-555-517	50998650000	001	TENSION SPRING RZ-053X	
2-580	60660003800	005	FISH PLATE	
2-581	56083170000	010	SETSCREW DIN 913-A4X8-A2-70	
2-600	60670009801	001	BEARING BUSHING	
2-630	60670005301	001	LEVER WELDED	
2-635	60370303700	001	HANDHOLD 28X90 M10	
2-640	50305450000	001	SHAFT SEAL WVA0018 16X22X5,5	
2-650	60670002500	001	ECCENTRIC PREASSEMBLED	
2-650-705	60660003400	001	BOLT	
2-650-706	56083810000	001	SETSCREW DIN 914-M6X10-A2-70	
2-650-708	57743450000	002	SOCKET HEAD SCREW DIN 912-M6X16-A2-70	
2-670	57770500000	001	WOODRUFF KEY DIN 6888 5X6,5 (WITH HANDLE)	
	60730101900	001	KEY (WITHOUT HANDLE)	
2-675	56083800000	001	SETSCREW DIN 914-M6X10-45H	
2-710	50007010000	001	SHOCK ABSORBER FK 32	
2-712	57750600001	001	RETAINING WASHER DIN 6799 6	
2-750	60666410103	001	SENSOR REED 1200 UL FK23/32	
2-780 (V)	60660002900	001	SAW BLADE GUIDE COMPL. (UP TO DEVICE-NO. 160 2192)	
	60660002901	001	GUIDE COMPL., LOWER PART (FROM DEVICE-NO. 160 2193)	
2-780-782	60650400700	001	PIN	
2-785	57429060000	002	HEXAGON SCREW DIN 933-M4X6-A2-70	
2-786	56765040000	002	WASHER DIN 9021-4,3-A2-70	
2-920	60660014100	001	ROD	
2-921	57750900000	001	RETAINING WASHER DIN 6799 9	
2-931	57432160000	002	HEXAGON SCREW DIN 933-M8X16-A2-70	
2-932	57767080000	002	SPR. LOCK WASHER DIN 128-A8-A2	
2-935	57750600001	001	RETAINING WASHER DIN 6799 6	
2-950	60670002000	001	AXIAL SEALING	
2-960	60670300200	001	DRIVE DISK	
2-965	60660012300	001	SCREW	
2-966	60650004800	001	WASHER 9	

Bitte unbedingt 11-stellige **Bestell-Nr.** angeben • Please always indicate 11 digit **Order No.** • Absolutement nécessaire d'indiquer **No. de commande**
(11 chiffres) • Favorisca specificarci sempre il **N. di ordine** a 11 cifre • Es imprescindible que citen el **No. de pedido** (11 guarismos)

Series (code No.) 90.146	Spare parts list No. 067.98.3.1004	FK 32	Text page 3
------------------------------------	--	--------------	-----------------------

Number in drawing	Order number	Piece	Designation	from status onwards
X 2-1000	X 60670300000	X 001	X GUIDE PULLEY COMPL. (UP TO DEVICE-NO. 10420966)	X
	60670300001	001	GUIDE PULLEY (FROM DEVICE-NO. 10420967)	
2-1000-333	60670300500	001	BEARING BOLT	
2-1000-334	56362700000	001	GROOVED BALL BEARING DIN 625 6203-2RSH	
2-1000-335	56362730000	001	GROOVED BALL BEARING 6204 2RSH	
2-1000-336	57773760000	001	RETAINING RING DIN 471-16X1	
2-1000-337	50003500000	001	O-SEAL OR 47 X2.5 (UP TO DEVICE-NO. 10420966)	
2-1000-338	60670300400	001	FLANGE	
2-1000-339	57451640000	003	COUNTERS.SCR. DIN 965-M6X12-A2-70	
2-1000-340	60670300600	001	FLANGE	
2-1000-341	60660300500	003	BOLT	
2-1000-345	50828030000	001	PROTECTIVE PLUG GPN300 F 3	
2-1200 (V)	60670005500	001	SAW BLADE GUIDE COMPL.	
2-1200-1160	60650400700	001	PIN	
2-1209	56755650000	002	WASHER DIN 433-6.4-A2-70	
2-1211	57747340000	002	SOCKET HEAD SCREW DIN 7984-M6X16-8.8	
2-1230	60670008000	001	PROTECTIVE RAIL COMPL.	
2-1250	56777140000	002	SEALING WASHER DIN 470-14-A2	
2-1299 (V)	60660012500	001	WHEEL SCRAPER SET FK23/FK32	
2-1299-1	60660011100	002	DEFLECTOR OUTSIDE	
2-1299-2	60660011200	002	DEFLECTOR INSIDE	
2-1299-3	60660004300	001	DEFLECTOR WHEEL	
2-1400	60670007601	001	TRAVERSE CPL.	
2-1405	57736120000	002	SOCKET HEAD SCREW DIN 912-M6X12-8.8	
2-1406	57767060000	002	SPR. LOCK WASHER DIN 126-A6-FST	
2-1480	60660006400	001	BOLT	
2-1485	56070540000	001	SETSCREW DIN 926-M5X8X2,5-A2-70	
2-1488	56087030000	001	STAR KNOB DIN 6335-K 40 M6-CUZN	
2-1500	60670500000	001	MATERIAL PUSHER CPL. (UP TO DEVICE-NO. 10471051)	
	60670500001	001	MATERIAL PUSHER CPL. (FROM DEVICE-NO. 10471052)	
2-1500-1515	38006813000	001	BALL (FROM DEVICE-NO. 10471052)	
	50001830000	001	BALL KNOB DIN 319 L 40X10 (UP TO DEVICE-NO. 10471051)	
2-1500-1518	50000690000	001	TOLERANCE RING (UP TO DEVICE-NO. 10471051)	
	95972840000	001	SCREW SEALING ADHESIVE LOCTITE 648 10M (FROM DEVICE-NO. 10471052)	
2-1555	60660011900	001	BOLT STOP	

Text page 4	FK 32	Spare parts list No. 067.98.3.1004	Series (code No.) 90.146
-----------------------	--------------	--	------------------------------------

Number in drawing	Order number	Piece	Designation	from status onwards
2-1803	60670801100	001	MAGNET HOLDER	
2-1804	56972490000	002	MUSHROOM HEAD SCREW M4X8-A2-70	
2-1805	50107170000	001	MAGNET 30420000 FOR SENSOR	
2-1806	56924510000	001	COUNTERS.SCR. DIN 964-M5X20-A2-70	
2-1808	60660800600	001	HANDLE	
2-1950	60670600102	001	PORTIONING STOP DEVICE COMPL.	
2-1950-1900	60670600202	001	STOP WELD.	
2-1950-1910	60660600900	001	STAR KNOB COMPL.	
2-1950-1920	60380402200	001	SLIDE PIN	
2-1956	56338240000	001	GROOVED PIN DIN 1474-6X24 A2-70 (UP TO DEVICE-NO. 160 2192)	
	56338200000	001	GROVVED PIN 6 X20 (FROM DEVICE-NO. 160 2193)	
2-1970	60670005200	001	SAW DUST COLLECTING BIN	
2-2040	56805410000	002	OVAL-HEAD SCREW DIN 7985-M4X6-5.8	
2-2042	57758610000	002	TOOTHED WASHER DIN 6797-A 4,3-FST	
2-2044	56739040000	002	WASHER DIN 125-A 4,3-A2-70	
2-2050	60660007700	001	ANGLE PLATE	
2-2052	51977600000	001	WARNING PLATE WITH DANGER ARROW	
2-2053	60674800900	001	PLATE F3/F4 FK23/32	
2-2110	71010630000	001	CABLE GLAND ST13.5 UL53015030	
2-2111	71161130000	001	NUT M PG 13.5	
2-2310	60665200101	001	I/O KEY CPL. FK23/32	
2-2310-3	60665310100	001	LPB I/O LED 24V FK23/32	
2-2310-3-404	71218440000	004	SNAP SWITCH DB3C-C1AA	
2-2310-20	60660011700	002	SPACER SLEEVE (LENGTH 11MM)	
2-2310-21	60660011801	002	SPACER SLEEVE (LENGTH 9MM)	
2-2310-23	50281080000	004	DISC SPRING DIN 2093-12X4,2X0,6	
2-2310-24	56400890000	005	LOCKNUT DIN 985-M4-A2-70	
2-2310-28	71169030000	002	FIXTURE CLIP HP-3N	
2-2310-30	60666401100	002	THRUST WASHER	
2-2310-32	50003680000	001	O-SEAL 20X1,0	
2-2310-34	60660200100	001	DECO FOIL VERTICAL	
2-2311	60730009600	001	PLATE	
2-2315	71004520000	001	FLAT CABEL HOLDER 3484-1000	
2-3002	60670005100	001	UPPER SEALING	
2-3005	60660009600	001	NUT FLANGE	
2-3052	60670005000	001	LOWER SEALING	
2-3053	60670004400	001	BUSHING	
2-3054	60670004301	001	CROSSBEAM E-PART OF FK 32 / RIEBER	
2-3055	57767080000	001	SPR. LOCK WASHER DIN 128-A8-A2	
2-3056	56456800000	001	HEXAGON NUT DIN 934-M8-X5CRNI18-10	
2-3085	57430120000	004	HEXAGON SCREW DIN 933-M5X12-A2-70	
2-3086	56739050000	004	WASHER DIN 125-A 5,3 -A2-70	
2-3087	57767050000	004	SPR. LOCK WASHER DIN 128-A5-FST	

Bitte unbedingt 11-stellige **Bestell-Nr.** angeben • Please always indicate 11 digit **Order No.** • Absolutement nécessaire d'indiquer **No. de commande**
(11 chiffres) • Favorisca specificarci sempre il **N. di ordine** a 11 cifre • Es imprescindible que citen el **No. de pedido** (11 guarismos)

Series (code No.) 90.146	Spare parts list No. 067.98.3.1004	FK 32	Text page 5
------------------------------------	--	--------------	-----------------------

Number in drawing	Order number	Piece	Designation	from status onwards
X	X	X	X	X
4	60676100901	001	KA I/O-LED 24V FK32	
10	50004450000	001	BAND SAW BLADE FK 30/32 KONVE	
	50004470000	001	BAND SAW BLADE FK 30 MB	
	50004500000	001	BAND SAW BLADE FK 30+ FK31+ FK32	
12	60670101000	001	MOTOR ATB COMPL. 400V/50HZ FK32	
	60670101100	001	MOTOR ATB COMPL. 220-380V/60HZ	
	60670101300	001	MOTOR ATB: CPL 200V750-60HZ	
13	71010850000	001	CABLE GLAND M20X1.5 UL 53111020	
20	60476200502	001	POWER CABLE CEKON 5M	
	60666200102	001	POWER CABLE CEKON 3.5M FK 23	
21	60544801800	001	LABEL THREE-PHASE CURRENT 230V	
30		001	CIRCUIT FK32	
30-3	60665000101	001	LPB CONTROL BOARD FK23 (400V/50HZ, 220V/60HZ AND 230V/50HZ INCLUDING BRAKE BOARD)	
	60665000120	001	LPB CONTROL BOARD FK23 D200V (200V/50HZ, INCLUDING BRAKE BOARD)	
30-3-5	60675100100	001	LP BRAKE BOARD 16A FK32	
30-3-21	71452590000	001	MICROFUSE 0.4T TR5	
30-3-23	71451310000	001	MICROFUSE 1.0T TR5	
30-7	71145330000	001	CONTACT.CA4-9-10/220V,50/60(100-M09NKF3) (400V/50HZ, 220V/60HZ AND 230V/50HZ)	
	71145400000	001	CONTACTOR CA4-9 200V50-10 (200V/50HZ)	
30-9	71145340000	001	CONTACTOR CA 4-9 24VDC (100-M09NZ243)	
30-11	71145310000	002	CONTACT BLOCK	
40	60676100100	001	MOTOR CABLE FK32 (A)	
	60676101000	001	MOTOR CABLE FK 32 (B)	
41	60676101100	001	CA X5 MOTOR	
101		001	STAND PURCHASE	
101-85	50720010000	002	CASTOR WITH PIVOT LEXZ-POT H 100 G-FI-WE	
101-86	57743650000	002	SOCKET HEAD SCREW DIN 912-M8X16-A2-70	
101-87	95972940000	001	SCREW SEALING ADHESIVE LOCTITE 243 10ML	
101-90	38008535000	002	WHEEL POTH_100_12G-WE	
101-100	60670000600	001	BOTTOM PLATE	
101-105	60670001001	001	COVER BOTTOM	
101-110	60670001201	001	COVER TOP	
101-115	60660008702	001	ANGLE	
101-130	60670000700	001	ANGLE PLATE WELDED	

Bitte unbedingt 11-stellige **Bestell-Nr.** angeben • Please always indicate 11 digit **Order No.** • Absolutement nécessaire d'indiquer **No. de commande** (11 chiffres) • Favorisca specificarci sempre il **N. di ordine** a 11 cifre • Es imprescindible que citen el **No. de pedido** (11 guarismos)

Text page 6	FK 32	Spare parts list No. 067.98.3.1004	Series (code No.) 90.146
-----------------------	--------------	--	------------------------------------

Number in drawing	Order number	Piece	Designation	from status onwards
X 101-135	X 60670800201	X 001	X DOOR (MAGNET BOTTOM)	X
	60670800203	001	DOOR (MAGNET TOP, GROUND SURFACE)	
171	47509000301	001	REFERENCE PLATE GER	
	47509000401	001	REFERENCE PLATE ENG	
	47509020600	001	REFERENCE PLATE NDL	
175	60674800402	001	NAMEPLATE FK32 CE	
	60674800602	001	NAMEPLATE FK32 220V/60HZ	
	60674800702	001	NAMEPLATE FK32 400V/60HZ	
	60674801202	001	NAMEPLATE FK32 200V/50-60HZ	
	60674801302	001	NAMEPLATE FK32 230V/50HZ	
	60674801902	001	NAMEPLATE FK32 CE BW	
220	60679850001	001	OPERATING INSTRUCTIONS FK32 GER	
	60679851001	001	OPERATING INSTRUCTIONS FK32 ENGL CE	
	60679851100	001	OPERATING INSTRUCTIONS FK32 ENGL	
	60679852001	001	OPERATING INSTRUCTIONS FK32 FRA	
	60679855001	001	OPER.INSTRUCT.FK32 FLEM.	
500	60671000002	001	SLIDING TABLE COMPL.	
500-1-2220	60650800500	003	SLIDING WASHER 16X4	
500-1-2222	60671000700	001	GUIDE BLOCK	
500-1-2223	60671000900	001	GUIDE BLOCK	
500-1-2224	50001200000	002	BUSH 2015 DU 20X23X15	
500-1-2225	56972770000	004	MUSHROOM HEAD SCREW M6X10-A2-70	
500-1-2230	60671001100	002	ANGLE PLATE (UP TO DEVICE-NO. 160 2192)	
	60671001101	002	ANGLE PLATE (FROM DEVICE-NO. 160 2193)	
500-1-2232	57431160000	004	HEXAGON SCREW DIN 933-M6X16-A2-70 (UP TO DEVICE-NO. 160 2192)	
	56456600000	004	HEXAGON NUT DIN 934-M6-A2-70 (FROM DEVICE-NO. 160 2193)	
500-1-2233	57767060000	004	SPR. LOCK WASHER DIN 126-A6-FST	
500-1-2234	56765060000	004	WASHER DIN 9021-6,4-A2-70	
500-1-2235	60650801300	001	SHAFT	
500-1-2236	40111300153	002	DAMPING RUBBER	
500-1-2237	60650801400	002	SPACER	
500-1-2238	60671001500	001	STOP PIN	
500-1-2239	60671002000	001	HOLDER	
500-1-2241	57432160000	001	HEXAGON SCREW DIN 933-M8X16-A2-70	
500-1-2242	57432700000	002	HEXAGON SCREW DIN 933-M8X70-A2-70	
500-1-2243	56456800000	002	HEXAGON NUT DIN 934-M8-X5CRNI18-10	
500-1-2244	57767080000	005	SPR. LOCK WASHER DIN 128-A8-A2	
500-1-2245	56739080000	002	WASHER DIN 125-A 8,4-A2-70	
500-2250	60671001600	001	REMNANT HOLDER COMPL.	
2250	60674801102	001	ADHES.LABEL THREE-PH.CURR. FK32	
9900	71451470000	001	FUSE ELEMENT F 16.0 A	

Bitte unbedingt 11-stellige **Bestell-Nr.** angeben • Please always indicate 11 digit **Order No.** • Absolutement nécessaire d'indiquer **No. de commande**
(11 chiffres) • Favorisca specificarci sempre il **N. di ordine** a 11 cifre • Es imprescindible que citen el **No. de pedido** (11 guarismos)