



# MODEL 55 POWER MEAT SAW OPERATING AND SERVICE MANUAL STARTING WITH SERIAL No. 55026



## ☆ IMPORTANT NOTICE ☆

This Manual contains important safety instructions which must be strictly followed when using this equipment.

## TABLE OF CONTENTS:

	PAGE
NOTICE TO OWNERS AND OPERATORS .....	1
SAFETY TIPS .....	2
INSTALLATION .....	3
WARNING LABELS .....	5
OPERATION .....	6
TO PROCESS PRODUCT .....	6
CLEANING .....	8
MAINTENANCE .....	9
GENERAL .....	9
LUBRICATION .....	10
CHANGING THE SAW BLADE .....	11
WARNING LABEL LOCATIONS ON MACHINES .....	11
PARTS DIAGRAMS .....	12
OPERATOR'S NOTES .....	17
WIRING DIAGRAM .....	23
OPTIONAL DOUBLE ROLLING TABLES PARTS LIST & DIAGRAMS .....	24
OPTIONAL FIXED FRONT TABLE PARTS LIST & DIAGRAMS .....	25
PARTS LIST / ORDERING .....	26
PARTS ASSEMBLIES LIST / ORDERING .....	27
WEARABLE SAW PARTS .....	28
OPERATOR'S SIGNATURE PAGE .....	29
LIMITED WARRANTY .....	30

## NOTICE TO OWNERS AND OPERATORS

BIRO's products are designed to process food products safely and efficiently. Unless the operator is properly trained and supervised, however, there is the possibility of a serious injury. It is the responsibility of the owner to assure that this machine is used properly and safely, strictly following the instructions contained in this Manual and any requirements of local law.

No one should use or service this machine without proper training and supervision. All operators should be thoroughly familiar with the procedures contained in this Manual. Even so BIRO cannot anticipate every circumstance or environment in which its products will be used. You, the owner and operator, must remain alert to the hazards posed by the function of this equipment - particularly the SHARP MOVING BAND TYPE SAW BLADE. No one under eighteen (18) years of age should operate this equipment. If you are uncertain about a particular task, ask your supervisor.

This Manual contains a number of safe practices in the SAFETY TIP section. Additional warnings are placed throughout the Manual. Warnings related to your personal safety are indicated by:



OR



Warnings related to possible damage are indicated by:



BIRO also has provided a wall chart to be posted near the equipment. If any warning label, wall chart, or Manual becomes misplaced, damaged, or illegible, please contact your nearest Distributor or BIRO directly for a replacement.

Remember, however, this Manual or the warning labels do not replace the need to be alert and to use your common sense when using this equipment.

This Manual applies to all Model 55 Power Meat Saws.

**- NOTE -**

**A copy of this manual is included with each MODEL 55 POWER MEAT SAW.**

**The descriptions and illustrations contained in this manual are not binding.  
The manufacturer reserves the right to introduce any modification without  
replacing the manual.**

## SAFETY TIPS



### SHARP MOVING BAND TYPE SAW BLADE TO AVOID SERIOUS PERSONAL INJURY

**NEVER** Touch This Machine Without Training and Authorization By Your Supervisor.

**ALWAYS** Read Operating and Service Manual **BEFORE** Operating, Servicing or Cleaning.

**ALWAYS** Keep Hands Clear of Sharp Band Type Saw Blade and Other Moving Parts.

**ONLY** Use a Qualified Electrician to Install According to Local Building Codes: Machines **MUST** Be Properly Grounded.

**ONLY** Install on a Level, Non-Skid Surface in a Clean, Well-Lighted Area Away From Children and Visitors.

**DO NOT** Attempt to Operate This Machine Until it has Been Inspected and Demonstrated by the Seller - Recognized **BIRO** Representative.

**DO NOT** Alter or Modify This Machine in any Way From its Original Form. This Machine in its Original Form Meets the Intent of O.S.H.A. Applicable Standards.

**NEVER** Operate with Saw Guide Bar with Saw Guard in the Raised Position or the Saw Guard Removed from the Saw Guide Bar.

**ALWAYS** Adjust the Saw Guide Bar with Saw Guard to Within 1/2" of Product to be Cut.

**ALWAYS** Use Supplied Safety End Cut Pusher Plate for Smaller Products or The Last Cuts of Products.

**DO NOT** Use This Machine for Non-Food Products.

**DO NOT** Use This Machine to Cut Pigs Feet.

**DO NOT** Wear Gloves While Operating.

**ALWAYS** Turn Off, Unplug From Power Source and Perform Lockout/Tagout Procedure to This Machine **BEFORE** Removing Shrouds, Removable Guards, Covers, Doors, Fences or Panels for Cleaning, Servicing or Any Other Reason.

**NEVER** Leave Machine Unattended While the Saw is Running.

**PROMPTLY REPLACE** Any Worn or Illegible Warning Labels.

**USE ONLY** Genuine **BIRO** Parts and Accessories Properly Installed.

## INSTALLATION



### **TO AVOID SERIOUS PERSONAL INJURY PROPERLY INSTALL EQUIPMENT IN ADEQUATE WORK AREA**

***ALWAYS** Read Operating and Service Manual **BEFORE** Operating, Servicing or Cleaning.*

***ALWAYS** Use Qualified Technician and Electrician for Installation.*

***ONLY** Install on a Level, Non-Skid Surface in a Clean, Well-Lighted Area Away From Children and Visitors.*

***DO NOT** Attempt to Operate This Machine Until it has Been Inspected and Demonstrated by the Seller - Recognized **BIRO** Representative.*

***DO NOT** Alter or Modify This Machine in Any Way from its Original Form. This Machine in its Original Form Meets the Intent of O.S.H.A Applicable Standards.*

***NEVER** Operate with Saw Guide Bar with Saw Guard in the Raised Position or the Saw Guard Removed from the Saw Guide Bar.*

***ALWAYS** Turn Off, Unplug From Power Source and Perform Lockout/Tagout Procedure to This Machine **BEFORE** Removing Shrouds, Removable Guards, Covers, Doors, Fences or Panels for Cleaning, Servicing or Any Other Reason.*

***NEVER** Operate Without all Warning Labels Attached and Wall Chart Posted.*

***NEVER** Leave Machine Unattended While the Saw is Running.*

***USE ONLY** Genuine **BIRO** Parts and Accessories Properly Installed.*

1. Read this Manual thoroughly before installation and operation. **Do not** proceed with installation and operation if you have any questions or do not understand anything in this Manual. Contact your local Distributor, or **BIRO first**.
2. Install machine on a level, solid, non-skid surface in a well-lighted work area away from children and visitors.



### **ALWAYS LEVEL MACHINE BEFORE USING**

3. After installing machine in operational area, it is imperative that the four adjustable legs be adjusted to level the machine to eliminate rocking. Remove all wood supports.

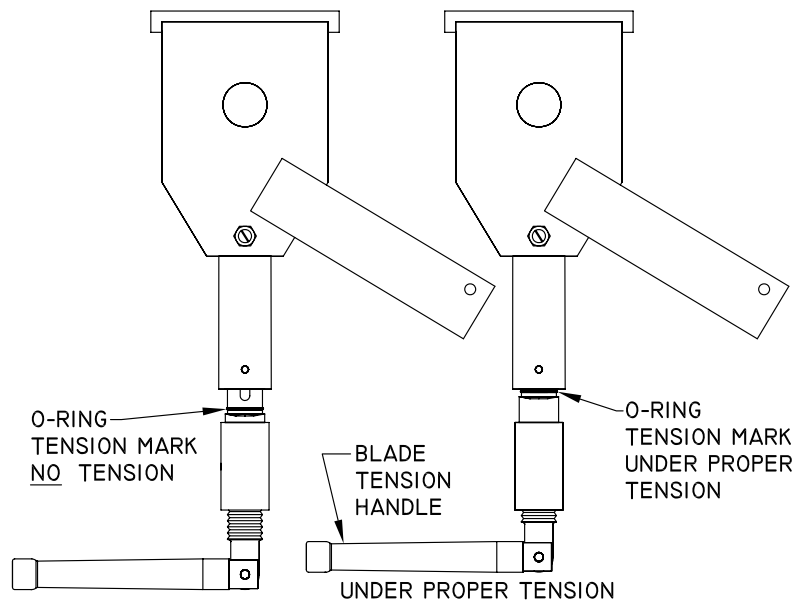


**NOTE TO OWNER AND ELECTRICIAN: IF THIS MACHINE IS NOT CORD AND PLUG CONNECTED TO THE ELECTRICAL SUPPLY SOURCE, THEN IT SHOULD BE EQUIPPED WITH, OR CONNECTED TO, A LOCKABLE, MANUALLY OPERATED DISCONNECT SWITCH (1010.147 OSHA).**

4. Machine **MUST** be properly grounded. Use qualified electrician to install according to building codes.

## WIRING MOTOR

- (A) All saws are wired at the factory for 220 volts or 440 volts as specified on original order. Be sure motor specifications (voltage, cycle, phase) match power supply line. Be sure line voltage is up to specification.
- (B) Connect leads to machine in a manner that will be approved by local electrical inspectors.
- (C) We recommend not less than No. 12 wire. If the leads are too light, machine may not have sufficient cutting power and/or speed.
- (D) The V-belt is packed loose in machine to prevent deformation, and must be installed on pulleys at time of installation.
- (E) Motors are dual voltage and can be changed according to wiring diagram on motor nameplate. Be sure the correct AEG contactor and overload is installed to match the selected volts and amps.
- (F) FAILURE TO USE THE PROPER CONTACTOR AND OVERLOAD FOR MOTOR VOLTAGE WILL CAUSE IRREPARABLE DAMAGE TO THE CONTACTOR.
- (G) The BIRO Manufacturing Company is not responsible for permanent wiring, connection or installation.



- 5. Be sure saw blade is properly installed on the saw wheels and set at proper tension. Turn the blade tensioning handle clockwise until the tension mark is even with the bottom of the upper wheel hinge plate as shown.
- 6. Make sure the saw guide bar is in its lowest position. Close head and base doors and latch.



### **KEEP HANDS CLEAR OF SHARP MOVING BAND TYPE SAW BLADE**

- 7. Push the start button and check for proper phasing of the motor. Blade should be traveling down through the saw guide.
- 8. Watch for proper tracking of the saw blade. Back of blade should be centered in the hole in saw guide in stationary bar (Item No. S119A). Push the stop button to stop machine.
- 9. Check placement of all warning labels, wall chart and Manual. Machine is ready for trained operators to process product.
- 10. Contact your local Distributor or **BIRO** directly if you have any questions or problems with installation or operation of this machine.

**WARNING LABELS  
FOR BIRO POWER MEAT SAWS  
SEE PAGE 11 FOR LOCATIONS ON MACHINE**

**WARNING**



DO NOT Use Unless Trained and Authorized By Supervisor And Over 18 Years Old. READ Operation Manual Thoroughly Before Operating. ALWAYS Keep Hands Clear of Saw Blade and other Moving Parts. Turn Off Saw when Finished Cutting. ALWAYS Keep Blade Guard Adjusted to 1/2" Above the Product being Cut. ALWAYS Use End Cut Pusher Plate When Cutting Smaller Piece of Product. DO NOT Use Saw if it is Altered, Damaged, Improperly Maintained, or If Warnings Are Illegible or Missing. ALWAYS Disconnect and Unplug from Main Power Source and Perform LOCKOUT/TAGOUT Before Cleaning or Servicing. Failure to comply with warning could result in serious bodily injury.

#653PC-E

ITEM No. 653PC-E

**MUCHO CUIDADO**



NO Opere Esta Sierra Sin Haber Sido Entrenado Para Ello Ni Tampoco Sin Autorizacion de un Supervisor. Uno Tiene que Haber Cumplido 18 Anos Para Operarla. LEA Cuidadosamente el Manual de Operacion Antes de Usar Este Equipo. SIEMPRE Guarde las Manos a Salvo de la Hoja de Serrar y de Otras Partes Moviles. Cierre el Interruptor Despues de Terminar de Cortar. SIEMPRE Tenga Ajustado el Guardasierra Para que Quede a 1/2" Por Encima del Producto que se Corta. SIEMPRE Haga Uso de la Placa de Empuje Para Cortes de Extremos al Cortar Trocitos Pequenos. NO Utilice la Sierra si se Halla Alterada, Danada o si No ha Sido Debidamente Mantenido o si la Advertencia es Illegible o si Falta Esta. SIEMPRE Desconecte el Equipo Decenchufandolo de la Fuente de Fuerza. Dejelo Bajo Llave o con Etiqueta que Prohiba su Uso Antes de Limpiarlo o Hacer Trabajos de Mantenimiento.

#653PC-SP

ITEM No. 653PC-SP



NOT TO SCALE



ALWAYS LOWER GUARD TO HEIGHT OF PRODUCT



**DANGER** EXPOSED BLADE



ITEM No. 708

## OPERATION



### SHARP MOVING BAND TYPE SAW BLADE TO AVOID SERIOUS PERSONAL INJURY

***NEVER** Touch This Machine Without Training and Authorization By Your Supervisor.*

***ALWAYS** Read Operating and Service Manual **BEFORE** Operating, Servicing or Cleaning.*

***ALWAYS** Keep Hands Clear of Band Type Saw Blade and Other Moving Parts.*

***DO NOT** Tamper With, Bypass, Alter, or Modify this Equipment in Any Way or Form.*

***DO NOT** Alter or Modify This Machine in any Way From its Original Form. This Machine in its Original Form Meets the Intent of O.S.H.A. Applicable Standards.*

***NEVER** Operate with Saw Guide Bar with Saw Guard in the Raised Position or the Saw Guard Removed from the Saw Guide Bar.*

***ALWAYS** Adjust the Saw Guide Bar with Saw Guard to Within ½” of Product to be Cut.*

***ALWAYS** Use Safety End Cut Pusher Plate for Smaller Products or The Last Cuts of Product.*

***DO NOT** Use This Machine for Non-Food Products.*

***DO NOT** Use This Machine to Cut Pigs Feet.*

***DO NOT** Wear Gloves While Operating.*

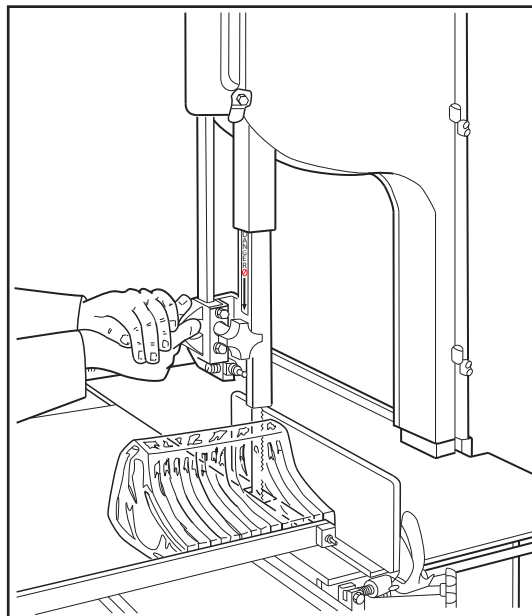
***ALWAYS** Turn Off, Unplug from Power Source and Perform Lockout/Tagout Procedures to This Machine **BEFORE** Removing Shrouds, Removable Guards, Covers, Doors, Fences or Panels for Cleaning, Servicing or Any Other Reason.*

***NEVER** Leave Machine Unattended While the Saw is Running.*

***NEVER** Operate Without All Warnings Attached and Wall Chart Posted.*

#### **A. TO PROCESS PRODUCT**

1. Before starting power saw, adjust saw guide bar with saw guard “B” to within ½” of product to be cut.  
“B” found on next page.





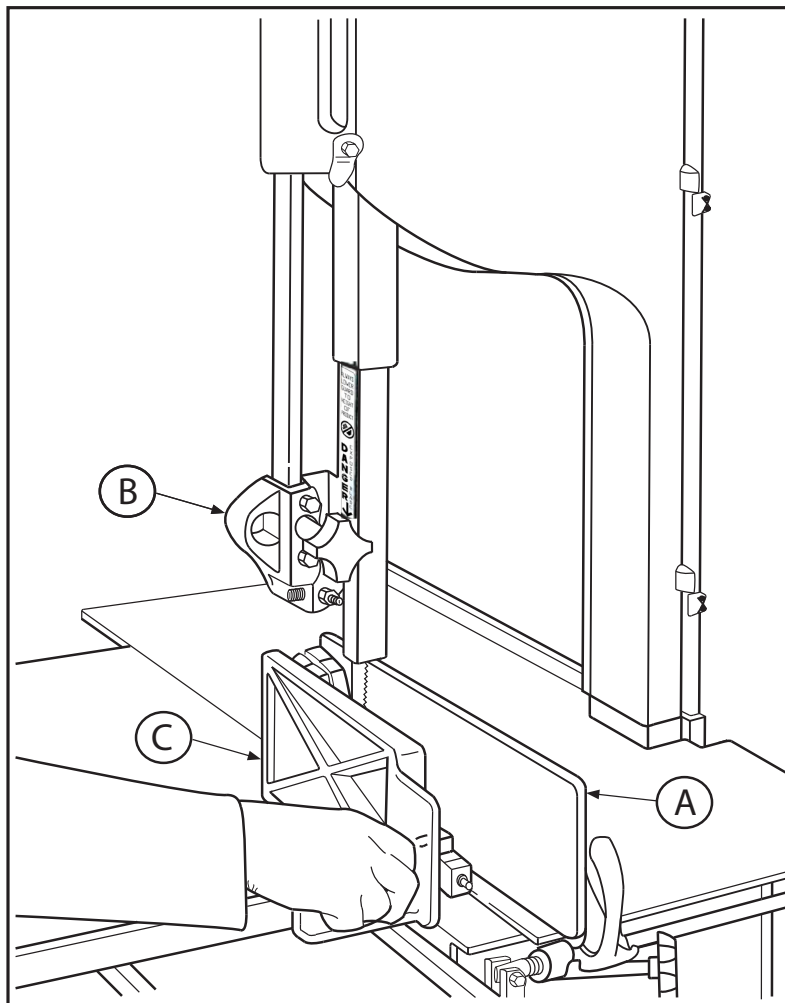
## DO NOT WEAR GLOVES WHILE OPERATING

2. Make sure all doors are closed and latched.
3. Adjust meat gauge plate “A” forward to desired thickness of cut.
4. Push start button and watch blade for proper tracking.
5. Standing in front of the power saw, place product on the meat carriage. Pay attention to position of your hands. Keep hands clear of moving band type saw blade. Leaning lightly against the scalloped front edge of meat carriage, hold the product firmly in right hand with product face flush against the meat gauge plate. Move the meat carriage from right to left at a steady rate until fully past the saw blade. Use left hand to remove and stack cut product, **NEVER REACH IN FRONT OF BAND TYPE SAW BLADE.** On the return stroke, pull the product slightly toward you to clear the blade.



## NEVER REACH OR GRAB FOR PRODUCT IN FRONT OF MOVING BAND TYPE SAW BLADE

6. ALWAYS use the Safety End Cut Pusher Plate “C” (Part No. [256P](#)) for smaller products or the last cuts of product. The pusher plate is supplied as standard equipment on all BIRO power saws.



7. When finished cutting, push stop button. Perform lockout/tagout procedure.

## CLEANING



### SHARP MOVING BAND TYPE SAW BLADE TO AVOID SERIOUS PERSONAL INJURY

**ALWAYS** Turn Off, Unplug from Power Source and Perform Lockout/Tagout Procedures to This Machine **BEFORE** Removing Shrouds, Removable Guards, Covers, Doors, Fences or Panels for Cleaning, Servicing or Any Other Reason.

**ALWAYS** Read Operating and Service Manual **BEFORE** Operating, Servicing or Cleaning.

**DO NOT** Alter or Modify This Machine in any Way From its Original Form. This Machine in its Original Form Meets the Intent of O.S.H.A. Applicable Standards.

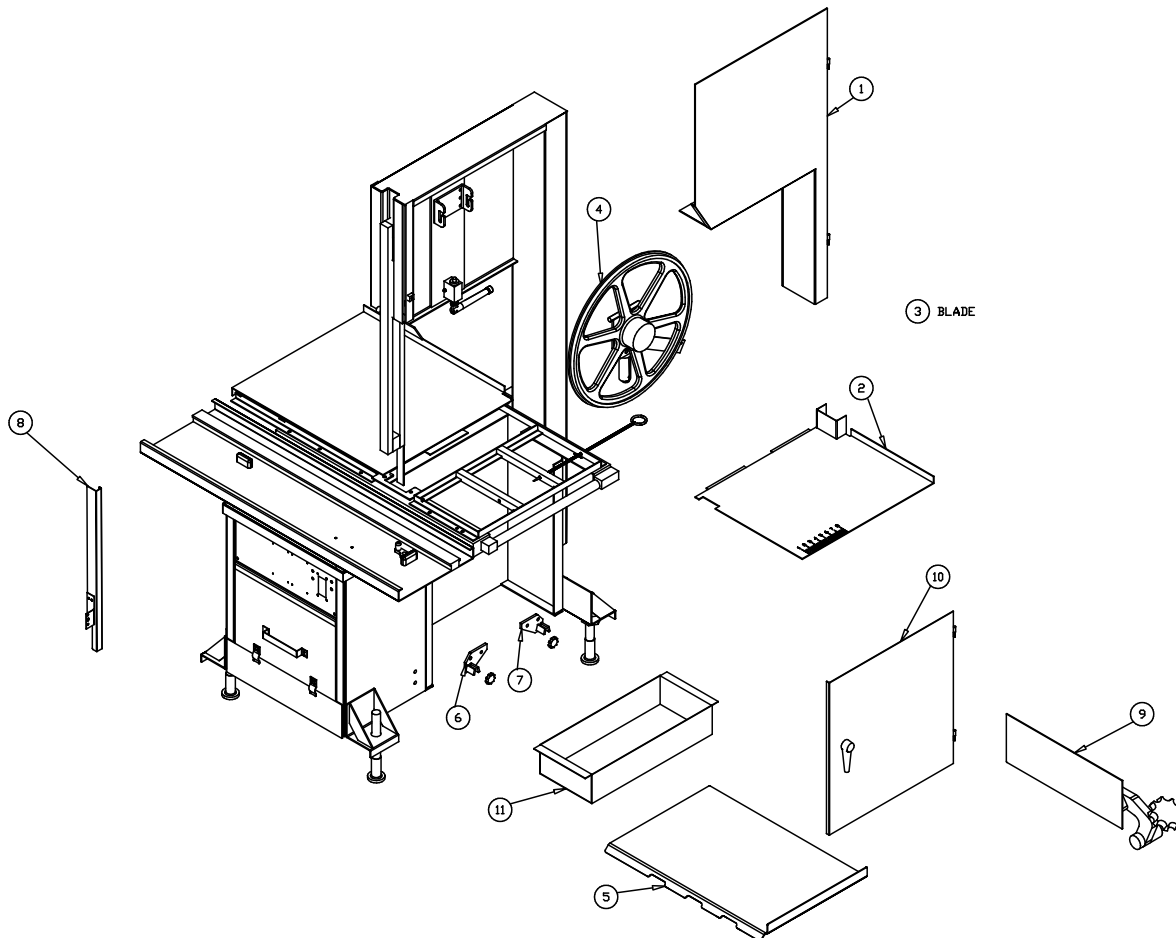
**ONLY** Use Recommended Cleaning Equipment, Materials and Procedures.

**NEVER** Spray Water or Other Liquid Substances Directly at Motor, Power Switch or any Other Electrical Components.

**ALWAYS** Thoroughly Clean Equipment at Least Daily.

#### CLEANING THE BIRO POWER MEAT SAW:

Disconnect electrical power to the machine before cleaning. Parts to be removed have been made accessible and can be removed without tools. Notice the drawing below that all parts are numbered. Each part should be removed for cleaning in the numbered sequence shown. To ensure cleaner cuts, keep the cleaning system in good condition. Parts on the cleaning system which should be checked weekly, and changed as required are as follows: Wheel Cleaners (Part No. 179), Saw Cleaners (Part No. 131), Saw Guide in Stationary Bar (Part No. S119A), Upper Saw Guide (Part No. S602B), Lower Blade Back-Up Guide (Part No. S608), and Nylon Filler (Part No. 177).



## MAINTENANCE



### TO AVOID SERIOUS PERSONAL INJURY

**ALWAYS** Turn Off, Unplug from Power Source and Perform Lockout/Tagout Procedures to This Machine **BEFORE** Removing Shrouds, Removable Guards, Covers, Doors, Fences or Panels for Cleaning, Servicing or Any Other Reason.

**ALWAYS** Read Operating and Service Manual **BEFORE** Operating, Servicing or Cleaning.

**NEVER** Touch This Machine Without Training and Authorization By Your Supervisor.

**NEVER** Bypass, Alter or Modify This Machine in Any Way from its Original Form. This Machine in its Original Form Meets the Intent of O.S.H.A Applicable Standards.

**ALWAYS** Keep Hands Clear of Band Type Saw Blade and Other Moving Parts.

**PROMPTLY REPLACE** Any Worn or Illegible Warning Labels.

**USE ONLY GENUINE BIRO** Parts and Accessories Properly Installed.

#### A. GENERAL

1. Machine should be generally inspected every time it is cleaned (at least daily) to ensure that it is in good condition and has not been damaged or tampered with.
  - a. **SAW WHEELS:** Clean outer diameter grooves daily. Check for cracks, gouges or wear on the flange and grooves.



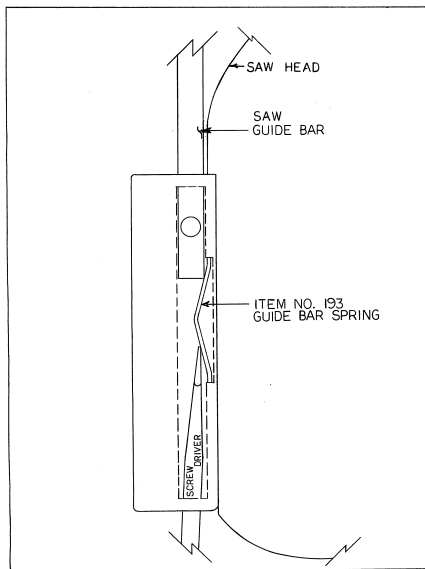
### DO NOT IMMERSE UPPER WHEEL ASSEMBLY IN WATER

- b. **WHEEL CLEANER ASSEMBLIES:** Check condition of fiber cleaner, change every four (4) weeks.
- c. **REMOVABLE FINGER LIFT ASSEMBLY:** Check condition of saw guard, make sure mounting bolts are tight and the “DANGER EXPOSED BLADE” decal is affixed and legible. Check condition of upper saw guide, replace every six (6) months. Check adjustment of upper saw guide. Should be 1/32” between back of blade and saw guide carbide.



### NEVER USE THIS MACHINE WITHOUT PROPERLY INSTALLED AND FUNCTIONING SAW GUIDE BAR WITH SAW GUARD

- d. **SAW GUIDE BAR:** Check condition of inner and outer saw guide bar, replace as necessary. Check saw guide bar spring or brass pad used with saw guide bar lock knob for proper tensioning of bars. Either system should hold the bars in any desired position in its travel. Replace saw guide bar spring (Part No. 193) or brass pad (Part No. 194) and lock knob (Part No. 194KS-1) as necessary using instructions on following page.



1. Remove the finger lift fastener knob and the finger lift assembly.
2. Remove the finger lift fastener stud.
3. Push the saw guide bar up and out of the top of the head structure.
4. Remove the saw guide bar spring or brass pad.
5. Clean and lubricate the babbitt pocket area (the square indented area that seats the saw guide bar spring or brass pad).
6. Lower the new saw guide bar spring or brass pad through the top of the babbitt pocket area and guide the spring/pad into position with a standard screwdriver. (NOTE: drawing)
7. While holding the saw guide bar spring or brass pad in position, re-enter the saw guide bar from the top compressing the saw guide bar spring slightly until the saw guide bar slides past the spring.
8. Replace the finger lift fastener stud, the finger lift assembly and the finger lift fastener knob.
9. Test by making several adjustments.

- e. **STATIONARY BAR ASSEMBLY:** Check condition of nylon filler, change every four (4) weeks. Check condition of saw guide, check tracking of blade through guide, back of blade should be centered in hole, replace every six (6) months. Check condition and adjustment of blade and saw guide carbide. Replace every six (6) months.
- f. **SAW CLEANERS:** Check condition of blade cleaners, replace every four (4) weeks.
- g. **MEAT GAUGE ASSEMBLY:** Check free movement of meat gauge arm on gear rack. Gear rack to be kept lubricated at all times with light food grade oil. Check operation of release handle. Check that worm gear engages properly with gear rack.
- h. **MEAT CARRIAGE ASSEMBLY:** Check free movement through full range of travel. Check side to side tolerance, adjust as necessary. Check condition of and grease bearings, replace as necessary. Check condition of thumb guard, replace as necessary.
- i. **SAFETY ITEMS:** Check that safety end cut pusher plate is with machine and accessible. All warning labels are present and legible. Model and Serial Number plate is affixed and legible. Wall poster within operators view from machine. Operating and Service Manual accessible to operator.

## B. LUBRICATION

1. **UPPER WHEEL BEARINGS:** Grease every four (4) months. Change grease every twelve (12) months.
2. **MEAT CARRIAGE BEARINGS:** Grease every four (4) weeks.
3. **SAW GUIDE BAR:** Oil daily with food machine oil.
4. **MEAT GAUGE GEAR RACK:** Oil daily with food machine oil.
5. **LOWER BEARING HOUSING:** Grease every four (4) months. Change grease every twelve (12) months.
6. **BLADE TENSION SPRING SCREW ASSEMBLY:** Grease every 4 weeks.  
 Note: Remove upper wheel and turn #14782 Blade Tension screw clockwise until it bottoms out against #14781 Blade Tension Handle then fill the cavity under the O-Ring on the #14782 Blade Tension Screw with #374 Shell Cassida Grease EPS-2 and reassemble.
7. **MOTOR BEARINGS:** Bearing grease will lose its lubricating ability over time, not suddenly. The lubricating ability of a grease (over time) depends primarily on the type of grease, the size of the bearing, the speed at which the bearing operates and the severity of the operating conditions. Good results can be obtained if the following recommendations are used in your maintenance program.  
 A high grade ball or roller bearing grease should be used. Recommended grease for standard service conditions is Polyrex EM (Exxon Mobil).  
 Equivalent and compatible greases include: Texaco Polystar, Rykon Premium #2, Pennzoil Pen 2 Lube, and Chevron SRI.  
 Recommended lubrications intervals is every 12 months with the equivalent of two (2) teaspoons of grease. If the motor does not have zerk fittings, the motor bearings are sealed for life.

## C. CHANGING THE SAW BLADE

Disconnect electrical power to the machine. Move meat gauge plate to rear of machine on gear rack and turn away from head out of the way. Open the head door fully. Pull out platter hold down rod. Remove right side platter half. Release tension on blade, turn tensioning handle counter-clockwise. Lift nylon filler. Remove blade. Install new blade by reversing procedure. Be sure tension mark is even with the bottom of the hinge plate for proper blade tension.

### WARNING LABEL LOCATIONS ON MODEL 55 POWER MEAT SAW



ITEM No. 653PC-E; Warning label,  
English  
1 ea. attached to channel bracket.

ITEM No. 653PC-SP; Warning label,  
Spanish  
1 ea. attached to channel bracket.

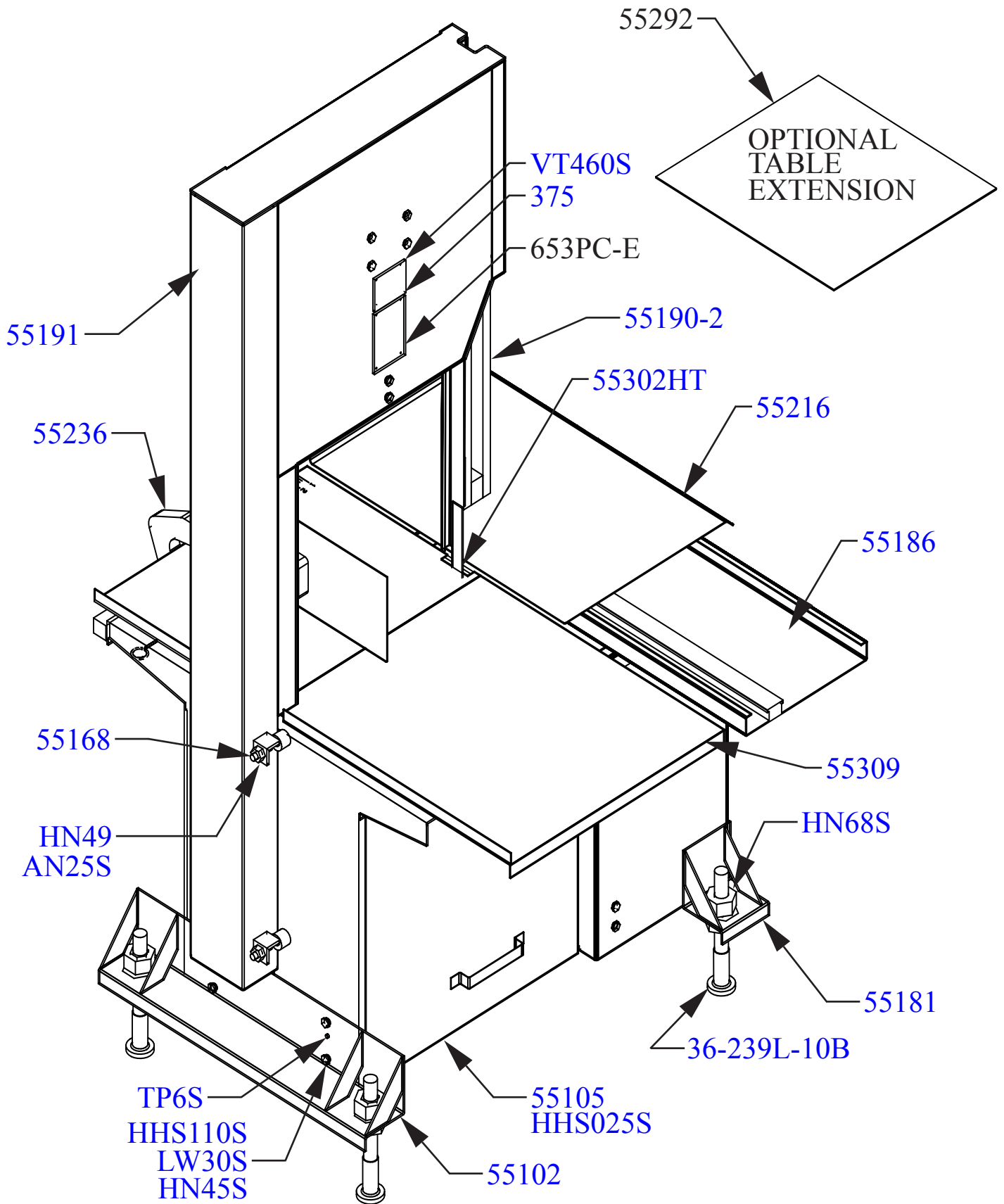


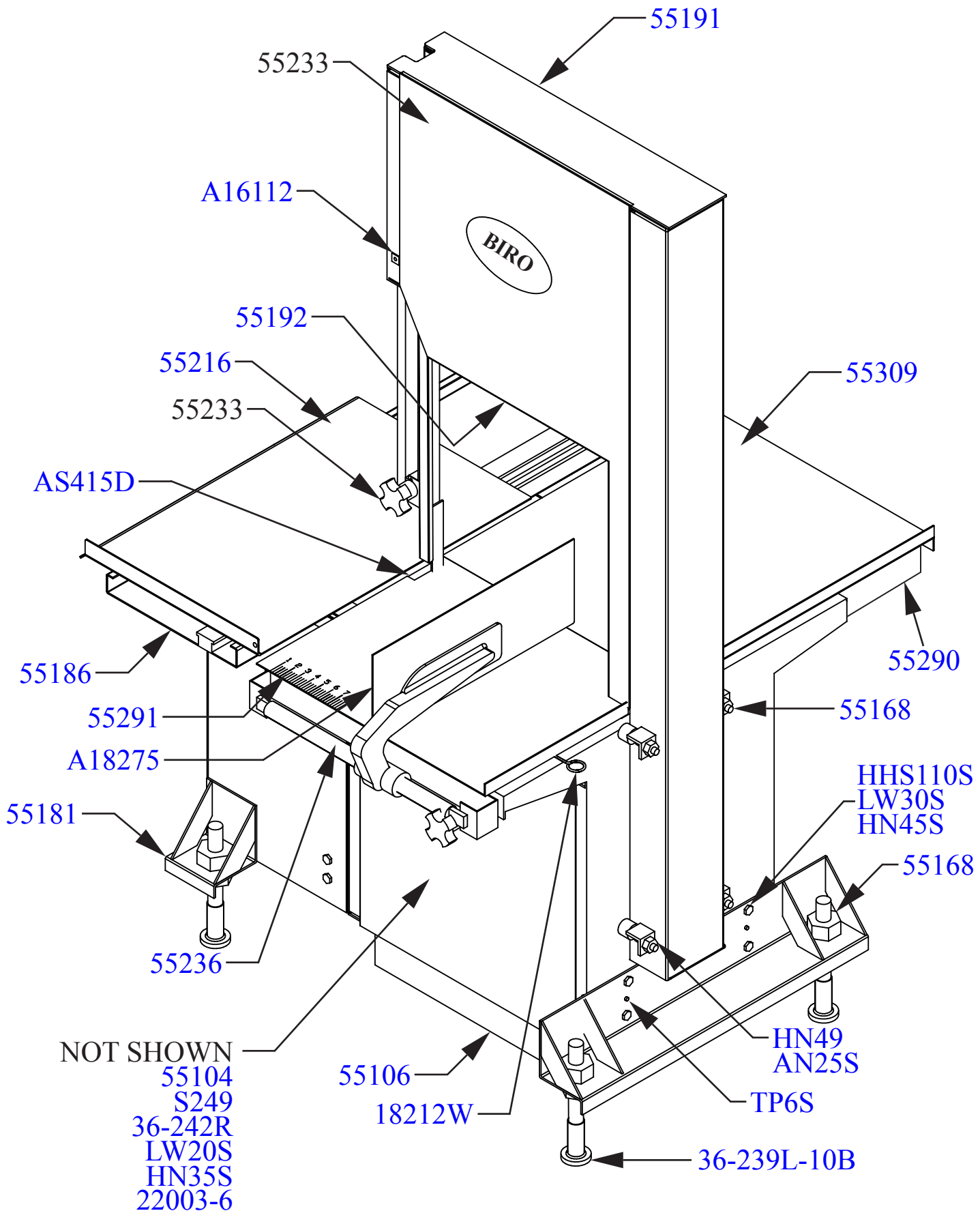
ITEM No. 653PC-E; Warning label,  
English  
1 ea. attached to head.



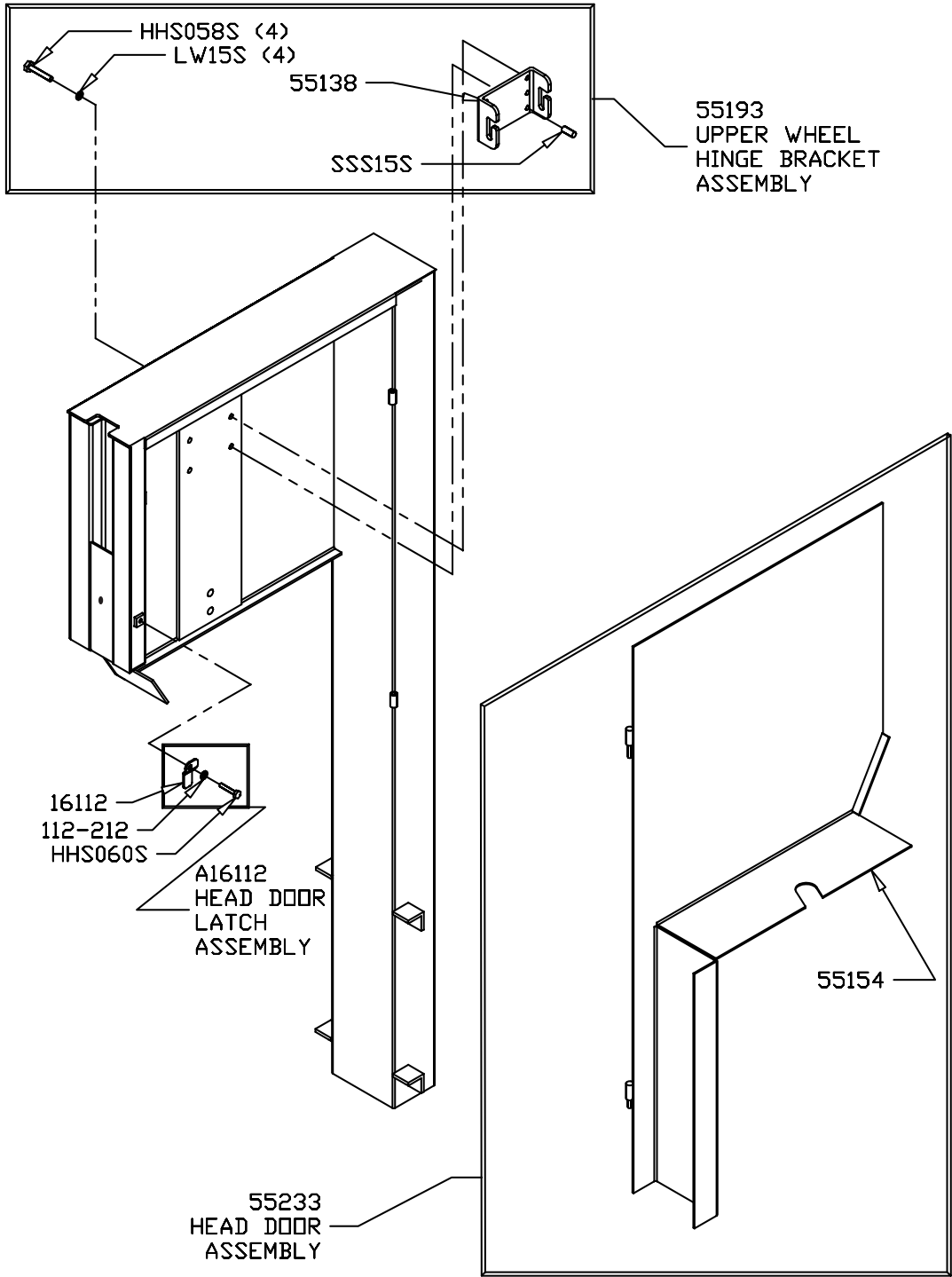
ITEM No. 708; Danger  
Exposed Blade  
Attached to saw guard on  
saw guide bar







55191  
S.S. HEAD & DOOR  
ASSEMBLY



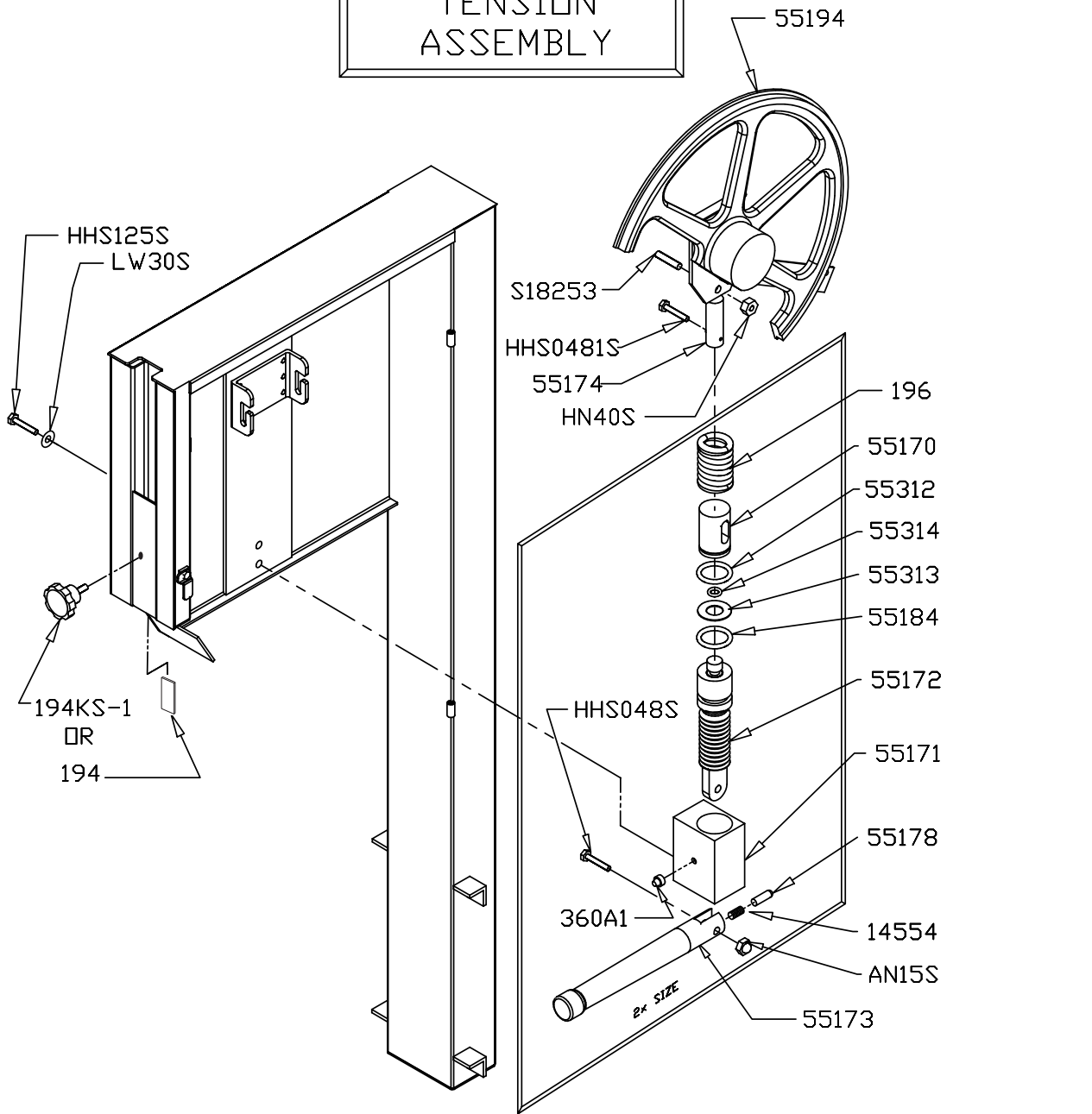
**Item No.**  
**A16112**  
**HHS058S**  
**HHS060S**  
**LW15S**  
**SSS15S**  
**112-212**

**Description**  
 Head door latch assembly  
 Hex head screw, <sup>5</sup>/<sub>16</sub> - 18 x <sup>7</sup>/<sub>8</sub>, SS  
 Hex head screw, <sup>5</sup>/<sub>16</sub> - 18 x 1, SS  
 Lock washer, <sup>5</sup>/<sub>16</sub>, SS  
 Set screw, <sup>5</sup>/<sub>16</sub> - 18 x <sup>5</sup>/<sub>16</sub>, SS cup point  
 Compression washer, <sup>21</sup>/<sub>64</sub> ID x <sup>3</sup>/<sub>8</sub> OD

**Item No.**  
**16112**  
**55138**  
**55191**  
**55193**  
**55233**

**Description**  
 Head door latch, SS  
 Hinge bracket, Upper wheel  
 Head and door assembly  
 Hinge bracket assembly, Upper wheel  
 Head door assembly, SS

55192  
BLADE  
TENSION  
ASSEMBLY



Item No.	Description
AN15S	Acorn nut, 1/4 - 20, SS
HHS048S	Hex head screw, 1/4 - 20 x 1 1/4, SS
HHS125S	Hex head screw, 1/2 - 13 x 1, SS
HHS0481S	Hex head screw, 1/4 - 20 x 1 1/2, SS
HN40S	Hex nut, 1/2 - 13 light jam, SS
LW30S	Lock washer, 1/2, SS
S18253	Upper wheel aligning screw, SS
194	Saw guide bar lock pad, brass
194KS-1	Saw guide bar lock knob assembly
196	Saw tension spring
360A1	Grease fitting
14554	Compression spring, SS

Item No.	Description
55170	Blade tension cap gauge
55171	Blade tension adjustment housing
55172	Blade tension screw
55173	Blade tension adjustment handle
55174	Upper wheel plate
55178	Plunger pin, blade tension handle
55184	O-ring, blade tension screw
55192	Blade tension assembly
55194	Upper wheel assembly with Hinge plate
55312	O-ring for tension cap gauge
55313	Plastic washer - tension screw
55314	O-ring, plastic washer

# Blade Tension Screw Conversion Kit

ITEM No. **55172K**

## INSTALLATION INSTRUCTIONS

Disconnect the machine from main power supply.

Loosen tension on the saw blade and remove the upper wheel assembly.

Unbolt the (A) tensioning handle from the (B) blade tension screw.

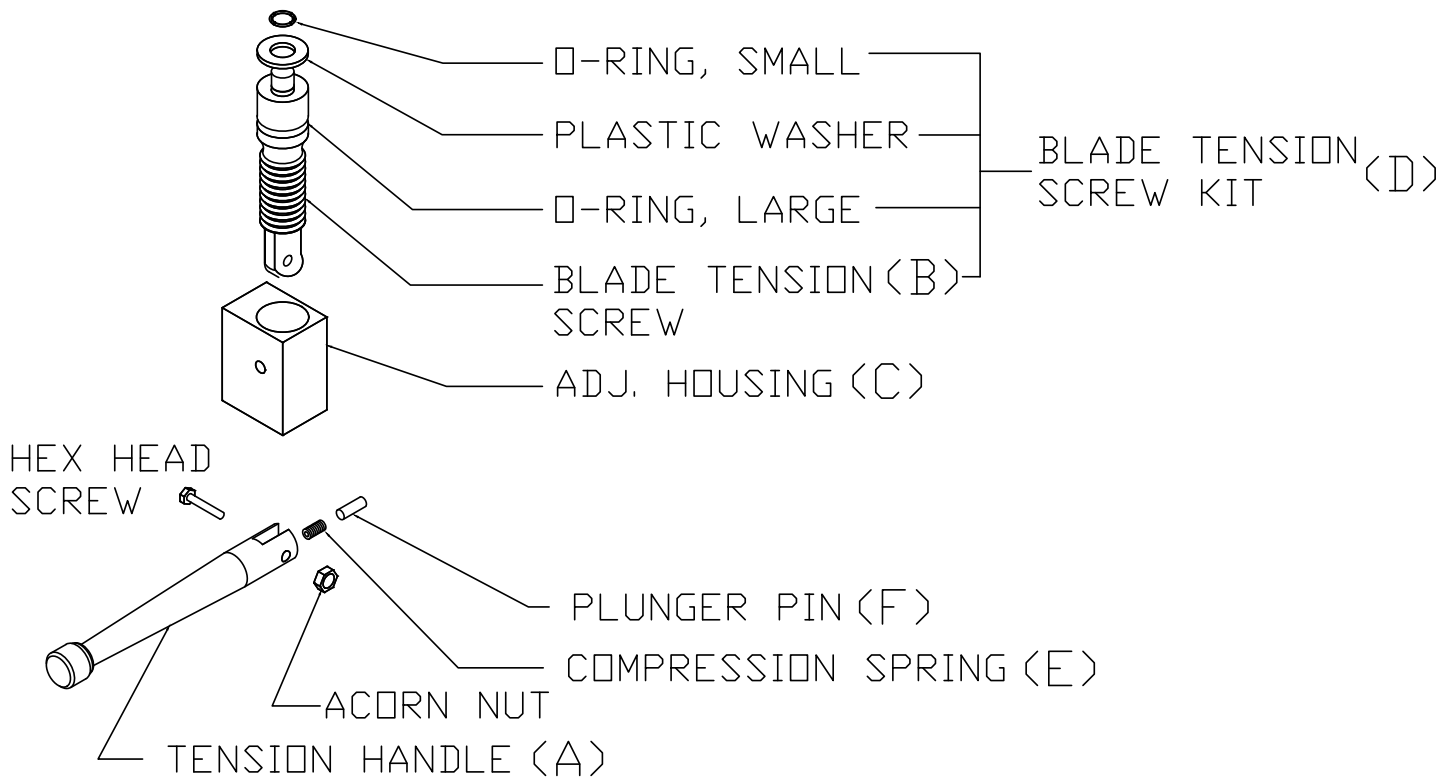
At the bottom handle mount turn the (B) blade tension screw clockwise until it can be lifted out of the (C) housing.

Apply a good food grade grease to the replacement (D) tension screw and install into the (C) housing turning counterclockwise until it bottoms out.

Replace the (A) tensioning handle. Be sure the (E) spring and (F) plunger pin are still present in the end of the (A) handle.

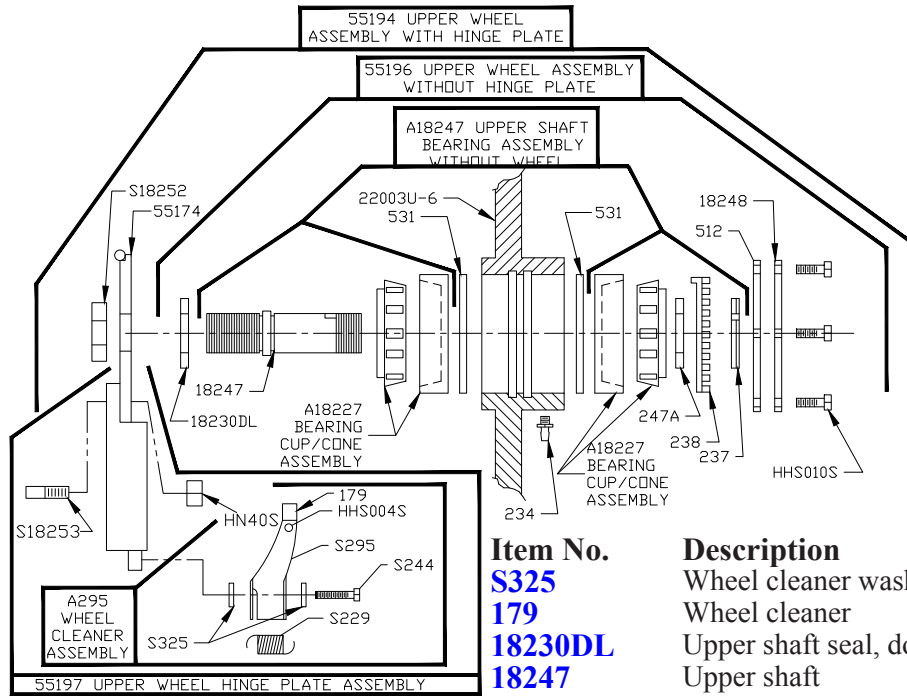
Replace the upper wheel assembly and the blade.

Tension the blade.



(A) <b>55173</b>	Tension Handle	<b>55184</b>	O-Ring, Large
(B) <b>55172</b>	Blade Tension Screw	<b>55313</b>	Plastic Washer
(C) <b>55171</b>	Adjustment Housing	<b>55314</b>	O-Ring, Small
(D) <b>55172K</b>	Blade Tension Screw Kit	<b>AN15S</b>	Acorn Nut, 1/4-20
(E) <b>14554</b>	Compression Spring	<b>HHS048S</b>	Hex Head Screw, 1/4-20 x 1 1/4
(F) <b>55178</b>	Plunger Pin		

## OPERATOR'S NOTES

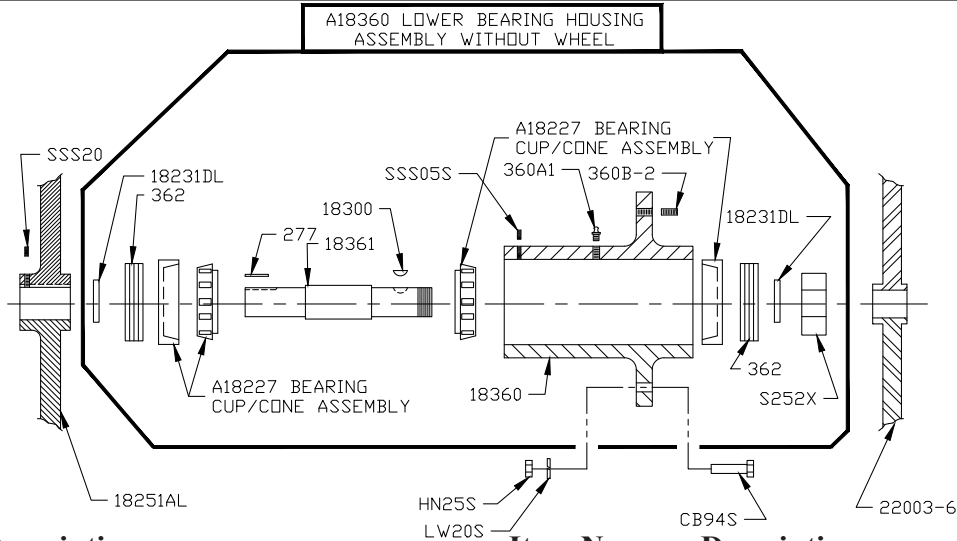


**Item No.**  
**A18227**  
**A18247**  
**A295**  
**HHS004S**  
**HHS010S**  
**HN40S**  
**S18252**  
**S18253**  
**S229**  
**S244**  
**S295**

**Description**  
 Bearing cup/cone assembly  
 Upper shaft & bearing assembly less wheel  
 Wheel cleaner assembly  
 Hex head screw, 8 - 32 x 3/8, SS  
 Hex head screw, 10 - 32 x 3/8, SS  
 Hex nut, 1/2 - 13 light jam, SS  
 Upper shaft lock nut  
 Upper wheel aligning screw, SS  
 Wheel cleaner arm spring, SS  
 Wheel cleaner arm stud, SS  
 Wheel cleaner arm, SS

**Item No.**  
**S325**  
**179**  
**18230DL**  
**18247**  
**18248**  
**22003U-6**  
**234**  
**237**  
**238**  
**247A**  
**512**  
**531**  
**55174**  
**55194**  
**55196**  
**55197**

**Description**  
 Wheel cleaner washer, SS  
 Wheel cleaner  
 Upper shaft seal, double lip  
 Upper shaft  
 Upper wheel hub cap  
 Upper wheel, 22", 6 spoke  
 Grease fitting  
 Upper shaft castellated lock nut  
 Upper shaft castellated lock washer  
 Upper shaft bearing back-up washer  
 Upper wheel hub cap gasket  
 Retaining ring  
 Upper wheel hinge plate  
 Upper wheel assembly w/ hinge plate  
 Upper wheel assembly w/o hinge plate  
 Upper wheel hinge plate assembly

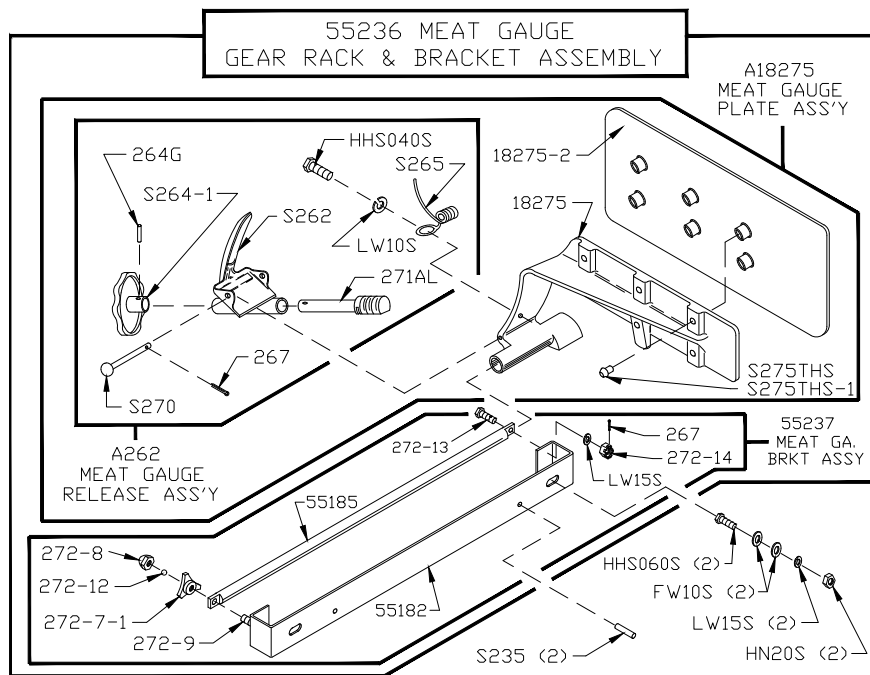


**Item No.**  
**A18227**  
**A18360**  
**CB94S**  
**HN25S**  
**LW20S**  
**SSS05S**  
**SSS20**  
**S252X**  
**18231DL**

**Description**  
 Bearing cup/cone assembly  
 Lower bearing housing assembly less wheel  
 Carriage bolt, 3/8 - 16 x 1 1/2, SS  
 Hex nut, 3/8 - 16, SS  
 Lock washer, 3/8, SS  
 Set screw, 10 - 24 x 3/8, SS  
 Set screw, 3/8 - 16 x 3/8, knurled, cup point  
 Shaft lock nut, SS  
 Lower shaft seal, double lip

**Item No.**  
**18251AL**  
**18300**  
**18360**  
**18361**  
**22003-6**  
**277**  
**360A1**  
**360B-2**  
**362**

**Description**  
 Upper V-belt pulley, 12.8 x 1 1/8, Al.  
 Lower shaft woodruff key  
 Lower bearing housing  
 Lower shaft  
 Lower wheel, 22" 6 spoke  
 Lower shaft pulley key  
 Grease fitting  
 Set screw, 1/2 - 13 x 3/4, flat point  
 Lower bearing housing cap

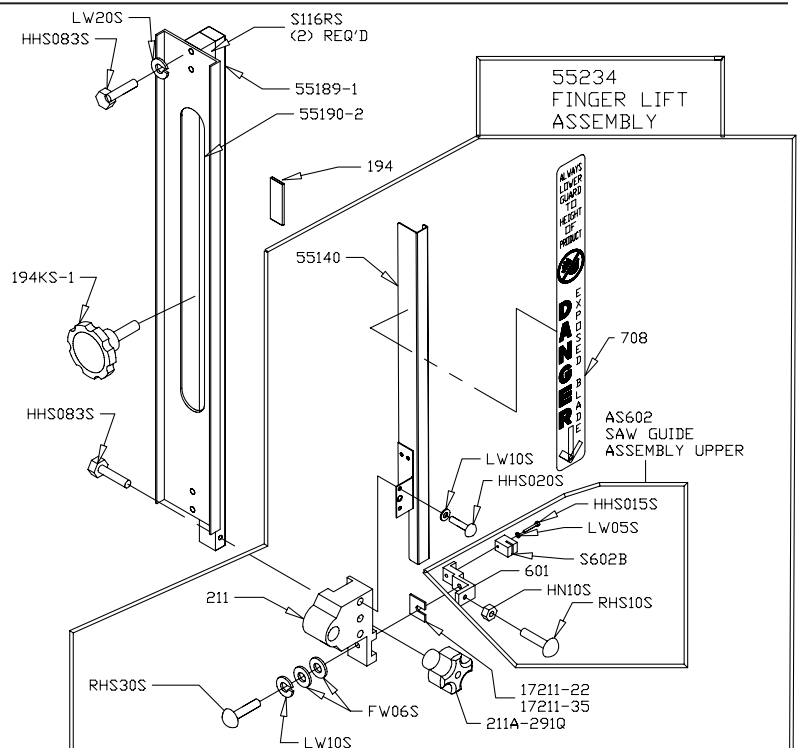


Item No.	Description
<b>A18275</b>	Meat gauge plate assembly
<b>A262</b>	Meat gauge release assembly
<b>FW10S</b>	Flat washer, <sup>5</sup> / <sub>16</sub> , SS
<b>HHS040S</b>	Hex head screw, <sup>1</sup> / <sub>4</sub> - 20 x <sup>3</sup> / <sub>4</sub> , SS
<b>HHS060S</b>	Hex head screw, <sup>5</sup> / <sub>16</sub> - 18 x 1, SS
<b>HN20S</b>	Hex nut, <sup>5</sup> / <sub>16</sub> - 18, SS
<b>LW10S</b>	Lock washer, <sup>1</sup> / <sub>4</sub> , SS
<b>LW15S</b>	Lock washer, <sup>5</sup> / <sub>16</sub> , SS
<b>S235</b>	Taper pin, #4 x <sup>3</sup> / <sub>4</sub> , SS
<b>S262</b>	Meat gauge release handle, SS
<b>S265</b>	Meat gauge release spring, SS
<b>S264-1</b>	Meat gauge release hand wheel, SS
<b>S270</b>	Meat gauge release pin
<b>S275THS</b>	Truss head screw, <sup>1</sup> / <sub>4</sub> - 20 x <sup>3</sup> / <sub>8</sub> , SS
<b>S275THS-1</b>	Truss head screw, <sup>1</sup> / <sub>4</sub> - 20 x 1, SS

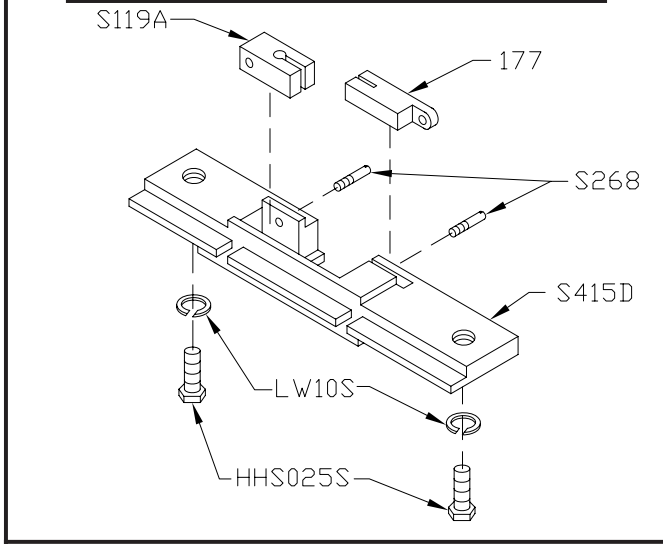
Item No.	Description
<b>18275</b>	Meat gauge arm
<b>18275-2</b>	Meat gauge plate less arm, SS
<b>264G</b>	Meat gauge hand wheel groove pin
<b>267</b>	Meat gauge release cotter pin
<b>271AL</b>	Meat gauge worm gear, aluminum
<b>272-7-1</b>	Knob, 3 point, <sup>5</sup> / <sub>16</sub> - 18
<b>272-8</b>	Cap nut, <sup>5</sup> / <sub>16</sub> - 18, SS
<b>272-9</b>	Hex bolt, <sup>5</sup> / <sub>16</sub> - 18 x 2, SS
<b>272-12</b>	Brass ball, <sup>7</sup> / <sub>32</sub> dia.
<b>272-13</b>	Hex bolt, <sup>5</sup> / <sub>16</sub> - 18 x 1 <sup>1</sup> / <sub>4</sub> , w/ hole, SS
<b>272-14</b>	Castle nut, <sup>5</sup> / <sub>16</sub> - 18, SS
<b>55182</b>	Meat gauge bracket
<b>55185</b>	Meat gauge gear rack
<b>55236</b>	Meat gauge assembly
<b>55237</b>	Meat gauge bracket assembly

### 55235-2 DOUBLE SAW GUIDE BAR ASSEMBLY

Item No.	Description
<b>AS602</b>	Saw guide assembly, SS Upper
<b>FW06S</b>	Flat washer, <sup>1</sup> / <sub>4</sub> , SS
<b>HHS015S</b>	Hex head screw, 10 - 32 x <sup>7</sup> / <sub>8</sub> , SS
<b>HHS020S</b>	Hex head screw, <sup>1</sup> / <sub>4</sub> - 20 x <sup>3</sup> / <sub>8</sub> , SS
<b>HHS083S</b>	Hex head screw, <sup>3</sup> / <sub>8</sub> - 16 x 1 <sup>3</sup> / <sub>4</sub> , SS
<b>HN10S</b>	Hex nut, 10 - 32, SS
<b>LW05S</b>	Lock washer, #10, SS
<b>LW20S</b>	Lock washer, <sup>3</sup> / <sub>8</sub> , SS
<b>RHS10S</b>	Round head screw, 10 - 32 x <sup>3</sup> / <sub>4</sub> SS
<b>RHS30S</b>	Round head screw, <sup>1</sup> / <sub>4</sub> - 20 x <sup>7</sup> / <sub>8</sub> SS
<b>S116RS</b>	Spacer, double saw guide bar, SS
<b>S602B</b>	Upper saw guide, SS
<b>194</b>	Saw guide bar lock pad, Brass
<b>194KS-1</b>	Saw guide bar lock knob assembly
<b>211</b>	Finger lift
<b>211A-291Q</b>	Finger lift fastener knob
<b>55140</b>	Saw guard w/ 708 decal
<b>55189-1</b>	Saw guide bar, inner, 32", SS
<b>55190-2</b>	Reinforcement saw guide bar
<b>55234</b>	Finger lift assembly, removable
<b>55235-2</b>	Double saw guide bar assembly
<b>601</b>	Upper saw guide bracket
<b>708</b>	Decal, "Danger Exposed Blade"



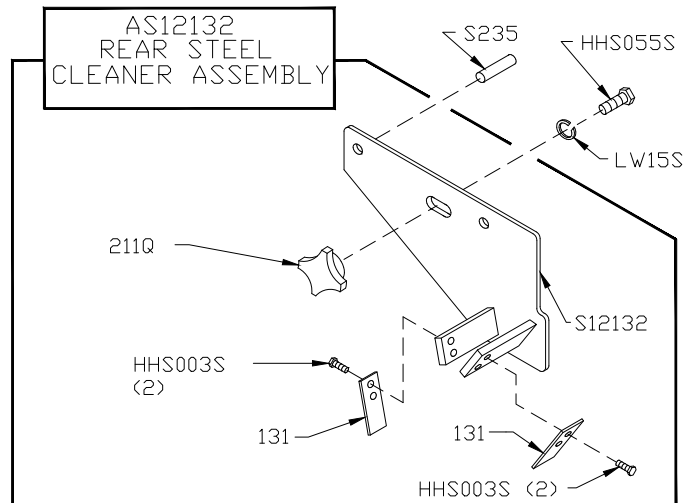
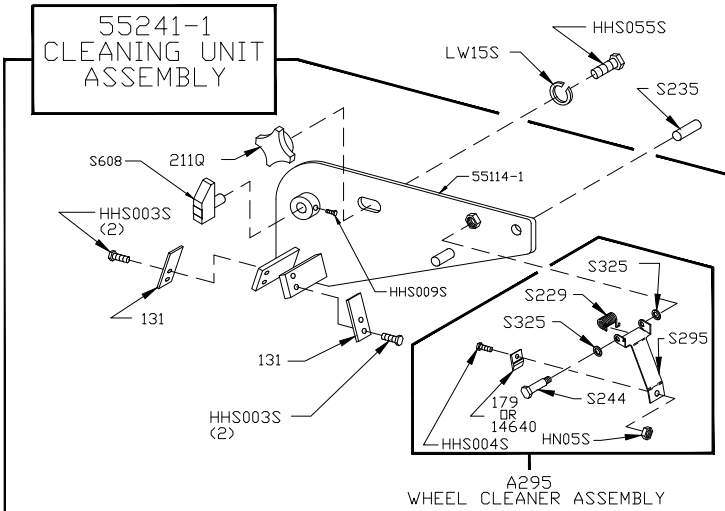
**AS415D**  
**STATIONARY BAR**  
**ASSEMBLY, SS**



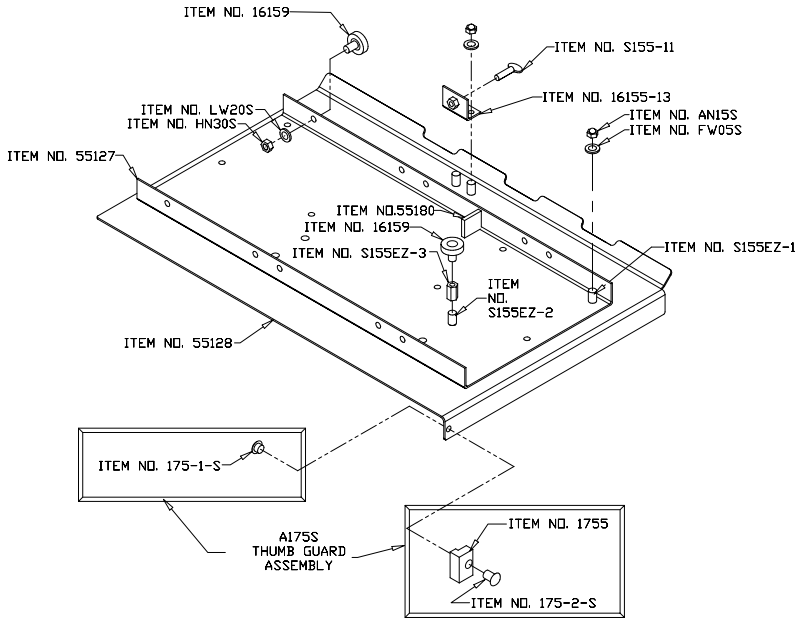
Item No.	Description
<b>AS415D</b>	Stationary bar assembly, SS
<b>HHS025S</b>	Hex head screw, 1/4-20 x 1/2 SS
<b>LW10S</b>	Lock washer, 1/4 SS
<b>S119A</b>	Saw guide in stationary bar, SS
<b>S268</b>	Stationary bar headless screw
<b>S415D</b>	Stationary bar, SS
<b>177</b>	Nylon filler

Item No.	Description
<b>A295</b>	Wheel cleaner assembly
<b>AS12132</b>	Rear cleaning unit assembly
<b>HHS003S</b>	Hex head screw, 8 - 32 x 1/4, SS
<b>HHS004S</b>	Hex head screw, 8 - 32 x 3/8, SS
<b>HHS009S</b>	Hex head screw, 10 - 24 x 1/4, SS
<b>HHS055S</b>	Hex head screw, 5/16 - 18 x 3/4, SS
<b>HN05S</b>	Hex nut, 8 - 32, SS
<b>LW15S</b>	Lock washer, 5/16, SS
<b>S12132</b>	Rear blade cleaning unit
<b>S229</b>	Wheel cleaner arm spring, SS
<b>S235</b>	Taper pin, #4 x 3/4, SS

Item No.	Description
<b>S244</b>	Wheel cleaner arm shoulder bolt, SS
<b>S295</b>	Wheel cleaner arm, SS
<b>S325</b>	Wheel cleaner arm washer, SS
<b>S608</b>	Back-up guide, carbide
<b>131</b>	Saw cleaner, SS
<b>14640</b>	Wheel cleaner, Rulon
<b>179</b>	Wheel cleaner
<b>211Q</b>	Fastener knob, 5/16 - 18, 4 point
<b>55114-1</b>	Lower front cleaning unit, weldment
<b>55241-1</b>	Lower front cleaning unit assembly



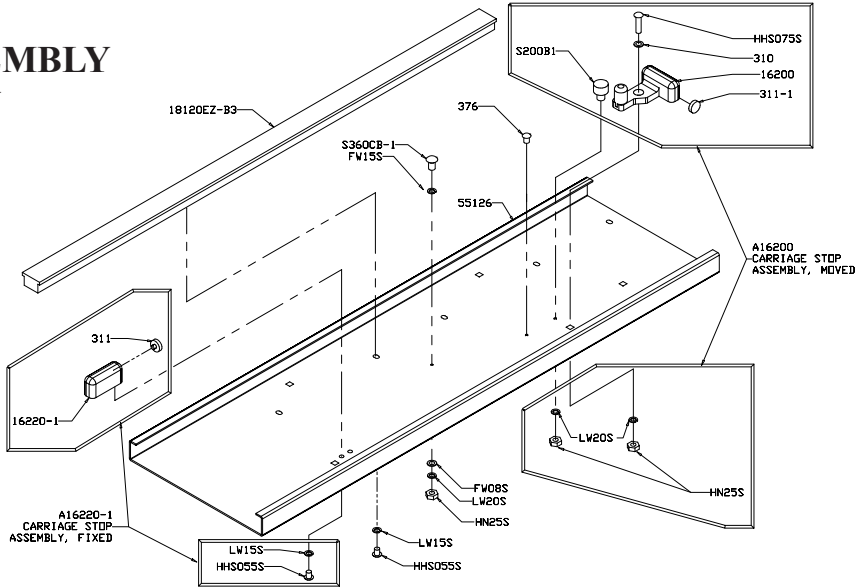
**55216**  
**MEAT CARRIAGE**  
**ASSEMBLY**



<b>Item No.</b>	<b>Description</b>
<b>A175S</b>	Thumb guard assembly
<b>AN15S</b>	Acorn nut, 1/4 - 20, SS
<b>FW05S</b>	Flat washer, 1/4, SS
<b>HN30S</b>	Hex nut, 3/8 - 16, SS
<b>LW20S</b>	Lock washer, 3/8, SS
<b>S155EZ-1</b>	Weld stud, 1/4 - 20 x 3/8, SS
<b>S155EZ-2</b>	Weld stud, 3/8 - 16 x 1/2, SS
<b>S155EZ-3</b>	Hex stand-off
<b>S155-11</b>	Meat carriage stop thumb screw, SS

<b>Item No.</b>	<b>Description</b>
<b>16155-13</b>	Carriage stop angle, SS
<b>16159</b>	Meat carriage bearing, SS
<b>175S</b>	Thumb guard
<b>175-1-S</b>	Thumb guard nut, SS
<b>175-2-S</b>	Thumb screw, SS
<b>55127</b>	Meat carriage angle, EZ flow
<b>55128</b>	Meat carriage top only
<b>55180</b>	Carriage stop
<b>55216</b>	Meat carriage assembly

**55186**  
**CHANNEL ASSEMBLY**  
**EZ-FLOW**

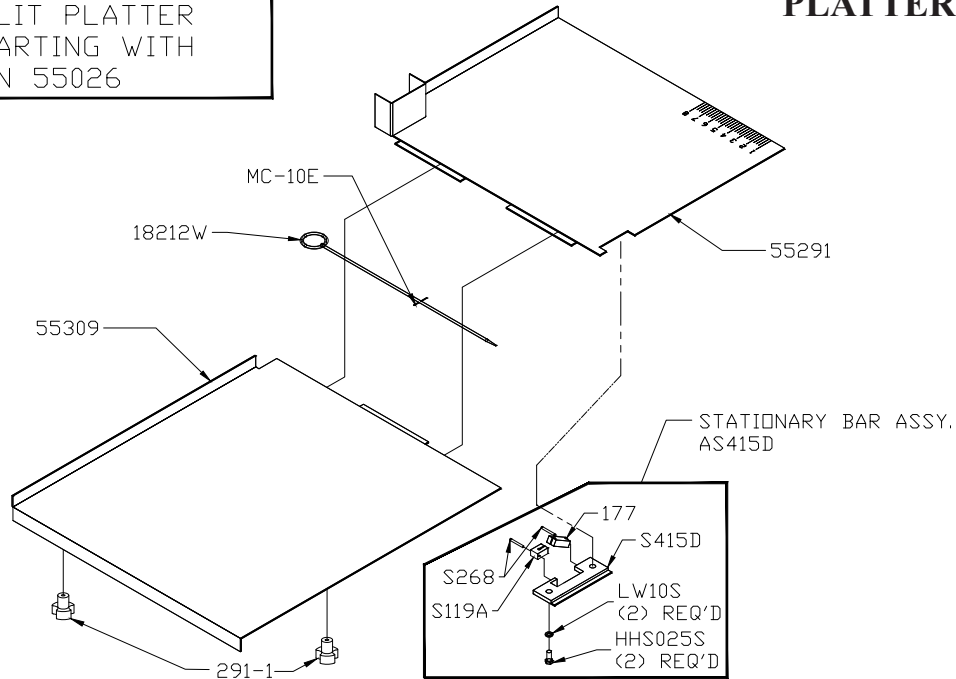


<b>Item No.</b>	<b>Description</b>
<b>A16200</b>	Channel stop assembly, movable
<b>A16220-1</b>	Channel stop assembly, fixed
<b>CB94S-1</b>	Carriage bolt, flat head 3/8 - 16 x 1 1/4, SS
<b>FW08S</b>	Flat washer, 3/8, SS
<b>HHS055S</b>	Hex head screw, 5/16 - 18 x 3/4, SS
<b>HHS075S</b>	Hex head screw, 3/8 - 16 x 1 1/4, SS
<b>HN25S</b>	Hex nut, 3/8 - 16, SS
<b>LW15S</b>	Lock washer, 5/16, SS
<b>LW20S</b>	Lock washer, 3/8, SS
<b>S200B1</b>	Carriage stop stud

<b>Item No.</b>	<b>Description</b>
<b>16200</b>	Carriage stop, movable
<b>16220-1</b>	Carriage stop, fixed
<b>18120EZ-B3</b>	Guide bar, EZ flow
<b>310</b>	Waved washer
<b>311</b>	Rubber bumper for fixed stops
<b>311-1</b>	Rubber bumper for movable stop
<b>376</b>	Drive screw, #10 x 1/2, SS
<b>55126</b>	Channel, EZ flow
<b>55186</b>	Channel assembly, EZ flow

SPLIT PLATTER  
STARTING WITH  
S/N 55026

## PLATTER ASSEMBLY

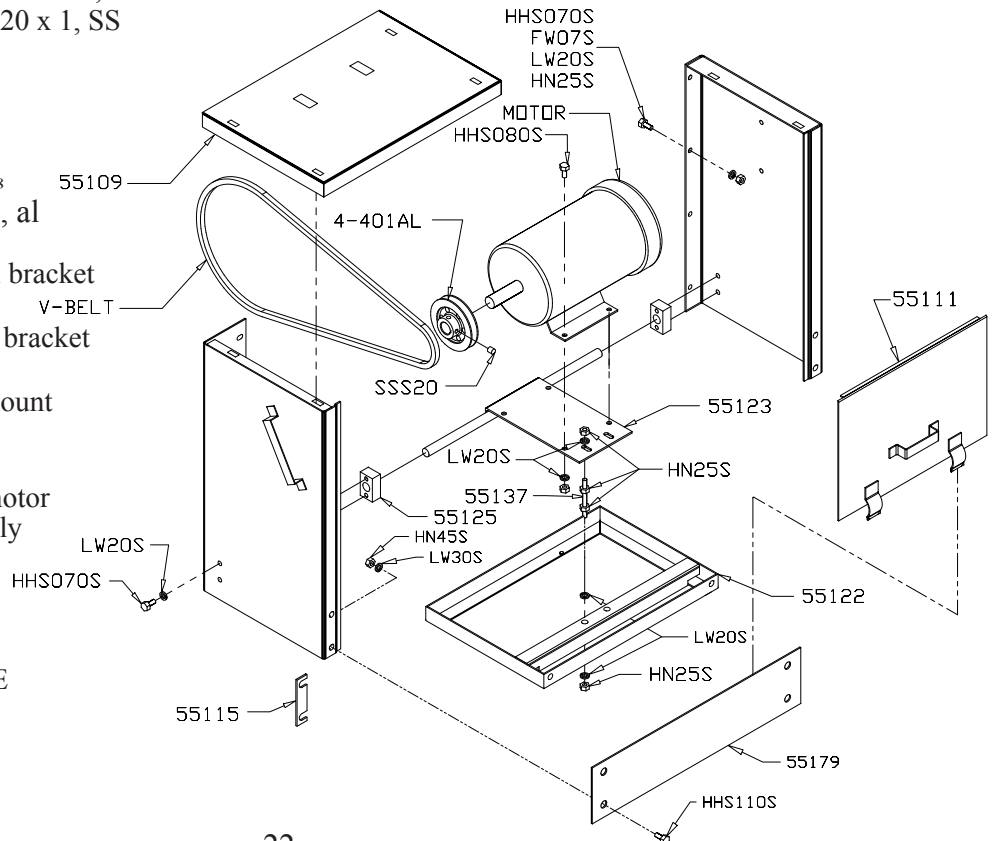


Item No.	Description
<b>AS415D</b>	Stationary bar assembly
<b>HHS025S</b>	Hex head screw, 1/4 - 20 x 1/2, SS
<b>LW10S</b>	Lock washer, 1/4, SS
<b>MC-10E</b>	Cotter pin, 1/8 x 1
<b>S119A</b>	Saw guide in stationary bar
<b>S268</b>	Stationary bar headless screw, SS

Item No.	Description
<b>S415D</b>	Stationary bar, SS
<b>177</b>	Nylon filler
<b>291-1</b>	Fastener knob
<b>55291</b>	Platter, right top
<b>55309</b>	Platter, left top
<b>18212W</b>	Platter rod

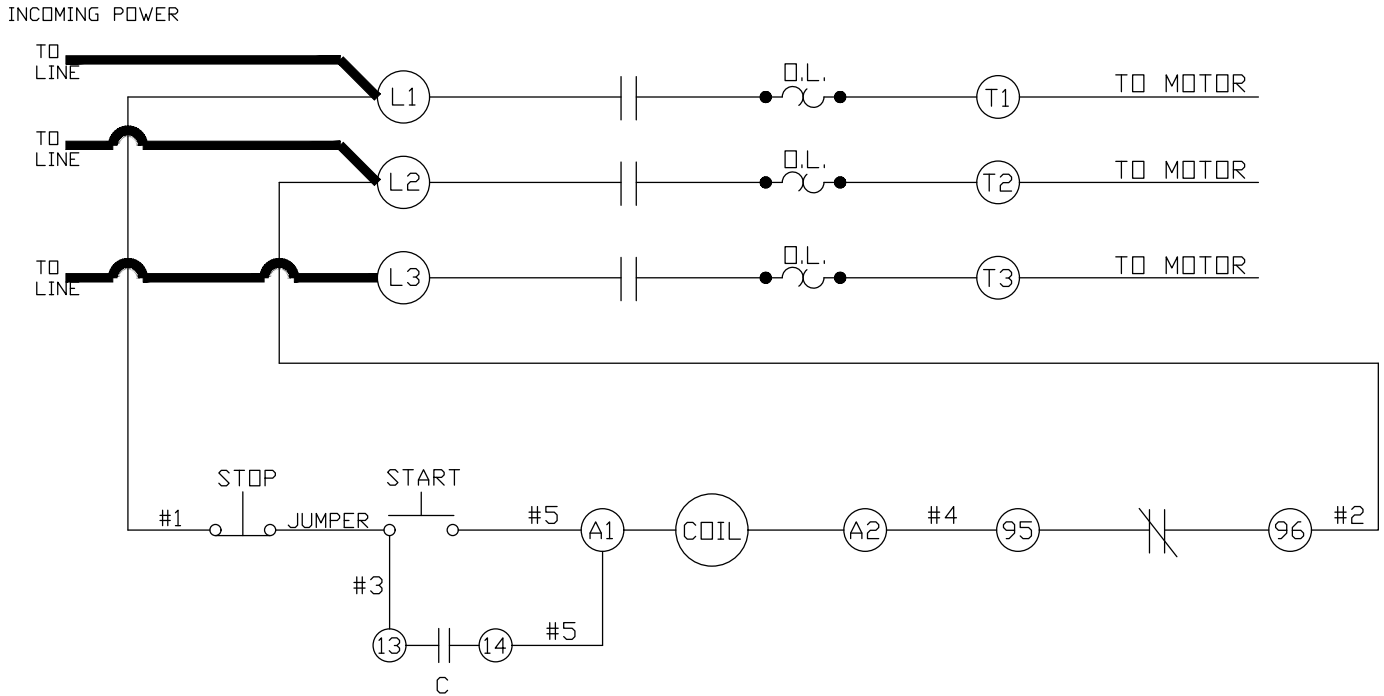
Item No.	Description
<b>HHS070S</b>	Hex head screw, 3/8 - 16 x 1, SS
<b>HHS080S</b>	Hex head screw, 3/8 - 16 x 1 1/2, SS
<b>HHS110S</b>	Hex head screw, 1/2 - 20 x 1, SS
<b>HN25S</b>	Hex nut, 3/8 - 16, SS
<b>HN45S</b>	Hex nut, 1/2 - 20, SS
<b>LW20S</b>	Lock washer, 3/8, SS
<b>LW30S</b>	Lock washer, 1/2, SS
<b>SSS20</b>	Set screw, 3/8 - 16 x 3/8
<b>4-401AL</b>	Motor pulley, 5 x 1 1/8, al
<b>55109</b>	Channel bracket, top
<b>55111</b>	Front panel - channel bracket
<b>55115</b>	Front spacer
<b>55122</b>	Bottom box, channel bracket
<b>55123</b>	Motor mount
<b>55125</b>	Pivot block, motor mount
<b>55137</b>	Adj. stud, motor mnt
<b>55179</b>	Support, front panel
<b>55187</b>	Channel bracket & motor compartment assembly

## CHANNEL BRACKET & MOTOR COMPARTMENT

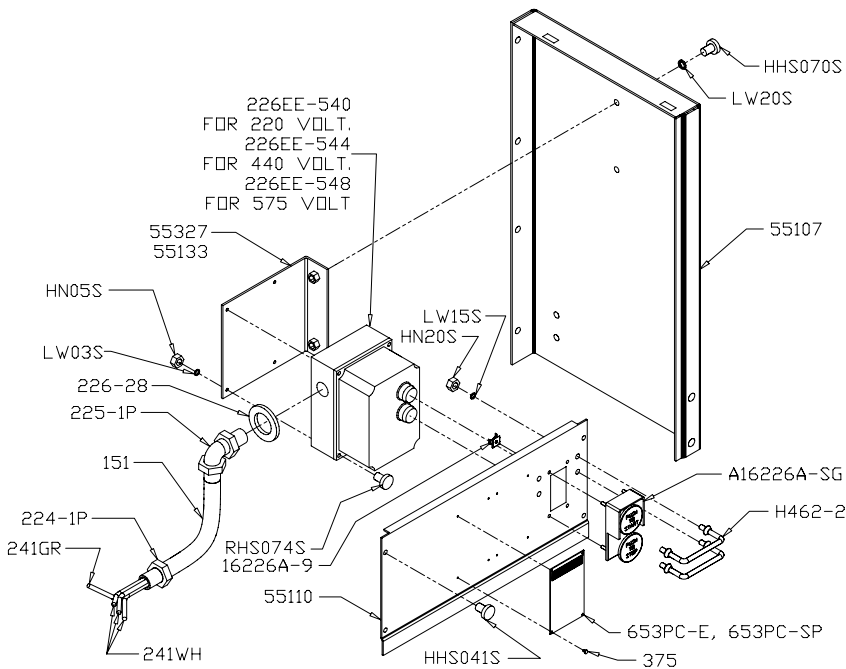


Item No.	Description
<b>55134-575</b>	Baldor 5HP 575-60-3/TEFC
<b>55134-WEG-HE</b>	Weg 5HP 208-230/460-60-3/TE
<b>V-Belts</b>	
<b>221-68</b>	V-belt, 68"
<b>221-70</b>	V-belt, 70"

## Model 55 Schematic Using 3PH AEG W.T. Switch for 208-220/440 Volts, Three Phase, 60 Cycle, Baldor Motor, 5HP



### 55188 SWITCH MOUNTING BRACKET ASSEMBLY



#### Item No. A16226A-SG

HHS041S

HHS070S

HN05S

HN20S

H462-2

LW03S

LW15S

LW20S

RHS074S

151

16226A-9

224-1P

225-1P

226-28

226EE-540

226EE-544

226EE-548

241GR

241WH

375

653PC-E

653PC-SP

55107

55110

55133

55327

226EE-CO11K

226EE-EO

226EE-FO

226EE-OL08L

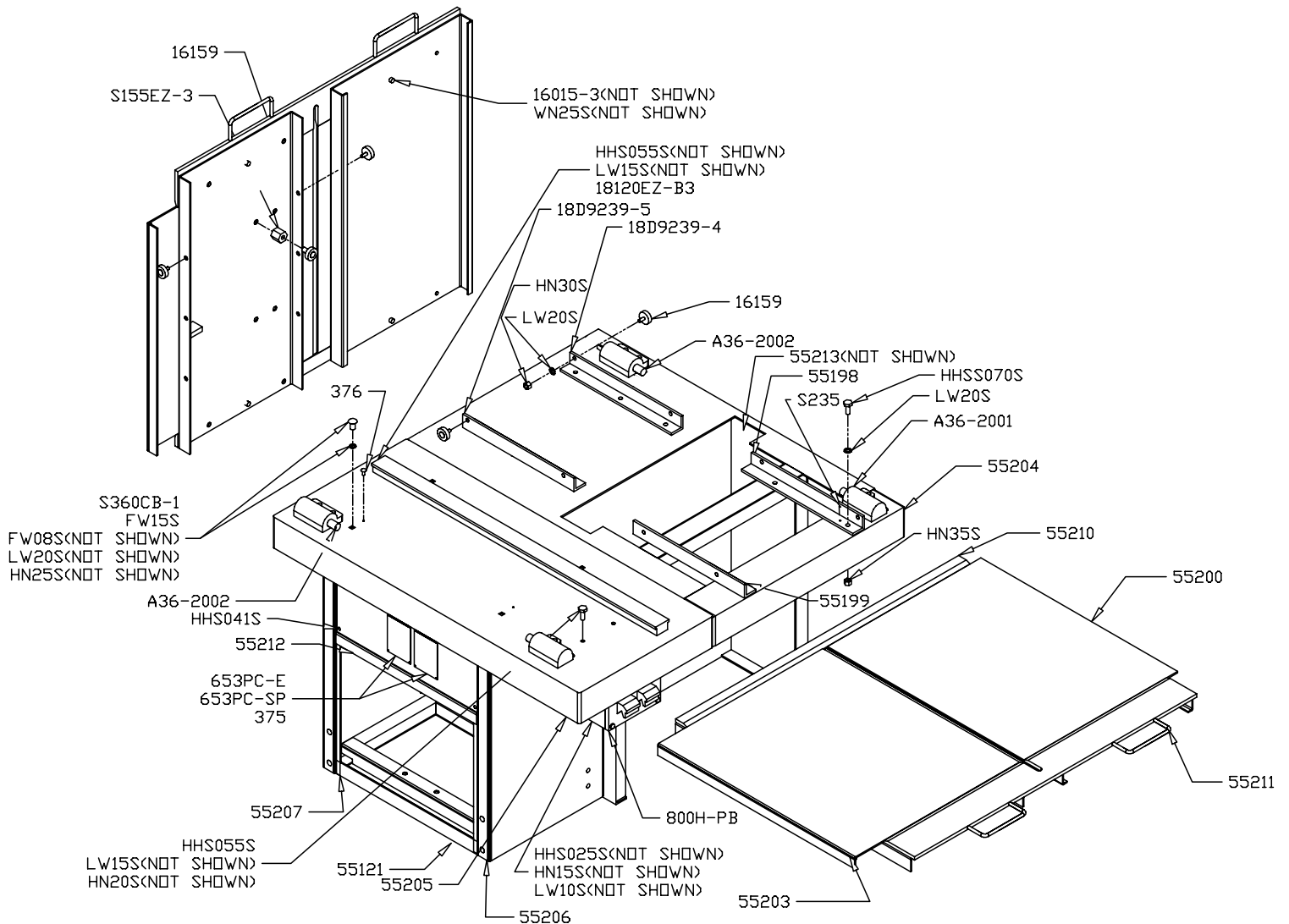
226EE-OL18O

55271

#### Description

- Gr/Rd sw button assembly
- Hex head screw,  $\frac{1}{4}$  - 28 x  $\frac{1}{2}$ , SS
- Hex head screw,  $\frac{3}{8}$  - 16 x 1, SS
- Hex nut, 8 - 32, SS
- Hex nut,  $\frac{5}{16}$  - 18, SS
- Switch guard, SS
- Lock washer, #8, SS
- Lock washer,  $\frac{5}{16}$ , SS
- Lock washer,  $\frac{3}{8}$ , SS
- Round head screw, 8 - 32 x  $\frac{5}{8}$ , SS
- Watertight conduit - 1 $\frac{1}{2}$ "
- Thread cutting nut
- Conduit connector, straight, WT
- Conduit connector, 90°, WT
- Connector washer
- Switch assembly, 5HP, 208-220-60-3
- Switch assembly, 5HP, 440-60-3
- Switch assembly, 5HP, 575-60-3
- Wire, green, 12 ga.
- Wire, white, 12 ga.
- Drive screw
- Warning label, English
- Warning label, Spanish
- Channel bracket, Rt side, \*NSS
- Control panel, channel bracket
- Switch bracket. before s/n 55059
- Switch bracket after s/n 55059
- NOT SHOWN**
- Contactor, LS11K.11S-CO, 208/220V
- Contactor, LS05.10-EO, 440V
- Contactor, LS05.10-FO, 575V
- Overload, B05-L, (5.5-8A)
- Overload, B18K-O, (14.5-18A)
- CE control panel

## OPTIONAL DOUBLE ROLLING TABLES



Item No.	Description
<b>A36-2001</b>	Carriage stop assembly, movable
<b>A36-2002</b>	Carriage stop assembly, fixed
<b>FW08S</b>	Flat washer, 3/8, SS
<b>FW15S</b>	Flat washer, 1/2, SS
<b>HHS025S</b>	Hex head screw, 1/4 - 20 x 1/2, SS
<b>HHS041S</b>	Hex head screw, 1/4 - 28 x 1/2, SS
<b>HHS055S</b>	Hex head screw, 5/16 - 18 x 3/4, SS
<b>HHS070S</b>	Hex head screw, 3/8 - 16 x 1, SS
<b>HN15S</b>	Hex nut, 1/4 - 20, SS
<b>HN20S</b>	Hex nut, 5/16 - 18, SS
<b>HN25S</b>	Hex nut, 3/8 - 16, SS
<b>HN30S</b>	Hex nut, 3/8 - 16, light jam, SS
<b>HN35S</b>	Hex nut, 3/8 - 16, heavy jam, SS
<b>LW10S</b>	Lock washer, 1/4, SS
<b>LW15S</b>	Lock washer, 5/16, SS
<b>LW20S</b>	Lock washer, 3/8, SS
<b>S155EZ-3</b>	Standoff, EZ flow
<b>S235</b>	Taper pin, #4 x 3/4, SS
<b>S360CB-1</b>	Carriage bolt, 3/8 - 16 x 1 1/4
<b>WN25S</b>	Wing nut, 7/16, - 14, SS
<b>16159</b>	Meat carriage bearing
<b>18120EZ-B3</b>	Guide bar, EZ flow
<b>18D9239-4</b>	Left rear bearing angle
<b>18D9239-5</b>	Left front bearing angle

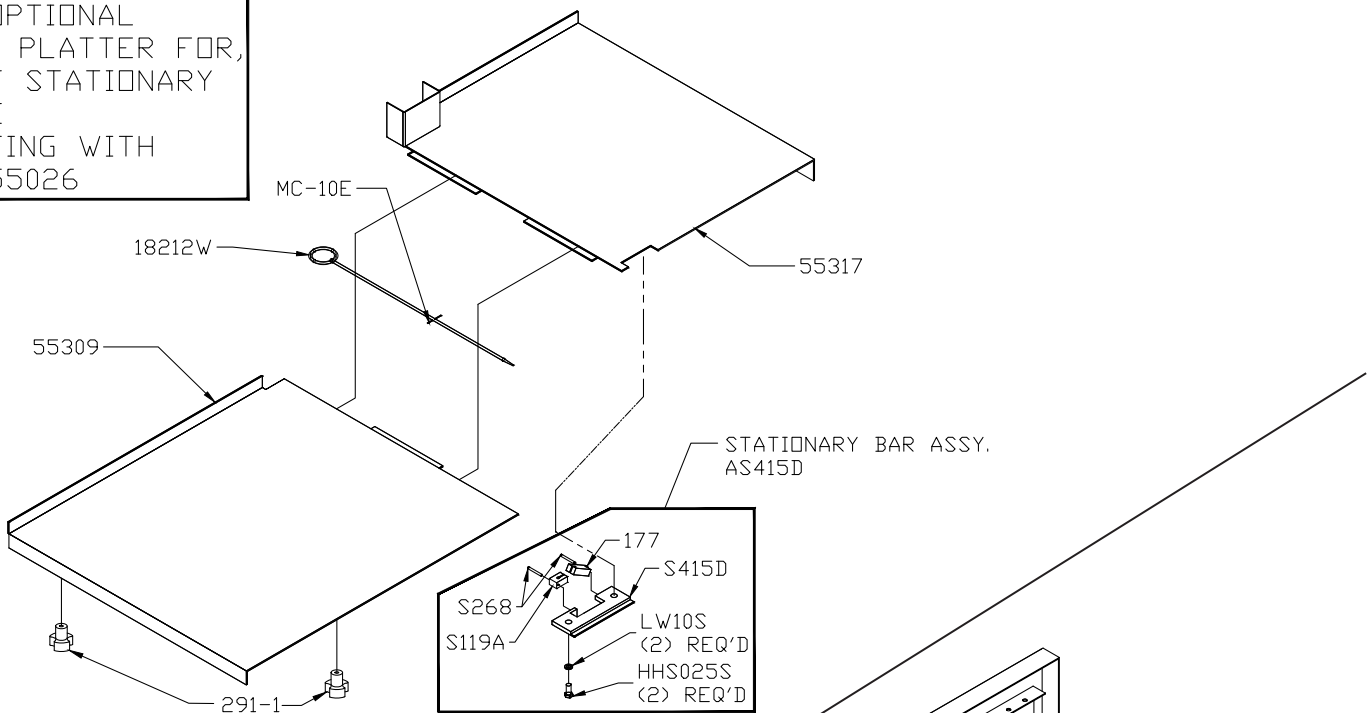
Item No.	Description
<b>375</b>	Drive screw
<b>376</b>	Drive screw, #10 x 1/2
<b>55121</b>	Bottom support weldment
<b>55198</b>	Bearing angle, right rear
<b>55199</b>	Bearing angle, right front
<b>55200</b>	Rear meat carriage, dbl rolling tables
<b>55203</b>	Front meat carriage, dbl rolling tables
<b>55204</b>	Rim extension, right
<b>55205</b>	Front box channel, dbl rolling tables
<b>55206</b>	Channel bracket, rt side, dbl rolling tables
<b>55207</b>	Channel bracket, lt side, dbl rolling tables
<b>55210</b>	Tie bar, left
<b>55211</b>	Tie bar, right
<b>55212</b>	Top front panel, channel bracket
<b>55213</b>	Filler plate, dbl rolling tables
<b>653PC-E</b>	Warning label, English
<b>653PC-SP</b>	Warning label, Spanish
<b>800H-PB</b>	WT pushbutton station, SS

### NOT SHOWN

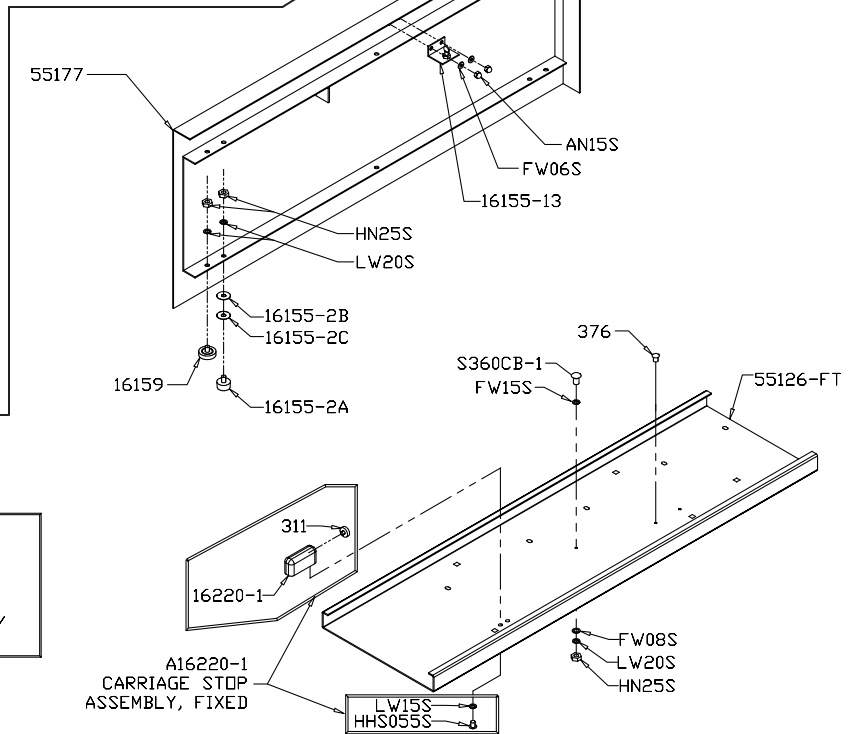
<b>226EE-605</b>	Switch assembly, 5HP, 208-230-60-3
<b>226EE-CO11K</b>	Contact, LS11K.11S-CO, 208/220V
<b>226EE-OL180</b>	Overload, B18K-O, (14.5-18A)
<b>55304</b>	Saw guard assembly, dbl rolling tables

## OPTIONAL FIXED FRONT FULL LENGTH TABLE

OPTIONAL  
SPLIT PLATTER FOR,  
FRONT STATIONARY  
TABLE  
STARTING WITH  
S/N 55026



Item No.	Description
<b>AS415D</b>	Stationary bar assembly
<b>HHS025S</b>	Hex head screw, 1/4 - 20 x 1/2, SS
<b>LW10S</b>	Lock washer, 1/4, SS
<b>MC-10E</b>	Cotter pin, 1/8 x 1
<b>S119A</b>	Saw guide in stationary bar
<b>S268</b>	Stationary bar headless screw, SS
<b>S415D</b>	Stationary bar, SS
<b>177</b>	Nylon filler
<b>291-1</b>	Fastener knob
<b>55309</b>	Platter, left top
<b>55317</b>	Platter, right top fixed table
<b>18212W</b>	Platter rod



OPTIONAL 55177  
FRONT  
STATIONARY  
TABLE ASSEMBLY

Item No.	Description
<b>A16220-1</b>	Carriage stop assembly, fixed
<b>AN15S</b>	Acorn nut, 1/4 - 20, SS
<b>FW06S</b>	Flat washer, 1/4, SS
<b>FW08S</b>	Flat washer, 3/8, SS
<b>FW15S</b>	Flat washer, 1/2, SS
<b>HHS055S</b>	Hex head screw, 5/16 - 18 x 3/4, SS
<b>HN25S</b>	Hex nut, 3/8 - 16, SS
<b>LW15S</b>	Lock washer, 5/16, SS
<b>LW20S</b>	Lock washer, 3/8, SS
<b>S360CB-1</b>	Carriage bolt, 3/8 - 16 x 1 1/4, SS

Item No.	Description
<b>16155-13</b>	Carriage stop angle
<b>16155-2A</b>	Meat carriage guide
<b>16155-2B</b>	Meat carriage guide spacer, 1/64
<b>16155-2C</b>	Meat carriage guide spacer, 1/32
<b>16159</b>	Meat carriage bearing
<b>16220-1</b>	Carriage stop, fixed
<b>311</b>	Rubber bumper
<b>376</b>	Drive screw, #10 x 1/2, SS
<b>55126-FT</b>	Channel, for fixed front table
<b>55177</b>	Front stationary table assembly less channel

## MODEL 55 ITEM NUMBERS AND DESCRIPTIONS

ALWAYS ADVISE MODEL & SERIAL NUMBER WHEN ORDERING

Item No.	Description	Item No.	Description
AN15S	Acorn nut, 1/4 - 20, SS	S268	Stationary bar headless screw, SS
CB64S	Carriage bolt, 1/4 - 20 x 1/2, SS	S270	Meat gauge release pin, SS
CB94S-1	Carriage bolt, flt hd. 3/8 - 16 x 1 1/2, SS	S275THS	Truss head screw, 1/4 - 20 x 3/8, SS
FW05S	Flat washer, 1/4, SS	S275THS-1	Truss head screw, 1/4 - 20 x 1, SS
FW08S	Flat washer, 3/8, SS	S295	Wheel cleaner arm, SS
FW10S	Flat washer, 5/16, SS	S325	Wheel cleaner arm washer, SS
FW15S	Flat washer, 1/2, SS	S415D	Stationary bar, SS
HHS003S	Hex head screw, 8 - 32 x 1/4, SS	S608	Back up guide, w/ carbide
HHS005S	Hex head screw, 8 - 32 x 5/8, SS	TP4S	Taper pin, #4 x 1 1/2, SS
HHS009S	Hex head screw, 10 - 24 x 1/4, SS	TP6S	Taper pin, #6 x 3/4, SS
HHS010S	Hex head screw, 10 - 32 x 3/8, SS	VT460S	Model & S/N plate, (S/N req'd)
HHS015S	Hex head screw, 10 - 32 x 7/8, SS	112-212	Waved washer
HHS020S	Hex head screw, 1/4 - 20 x 3/8, SS	131	Saw cleaner, SS
HHS025S	Hex head screw, 1/4 - 20 x 1/2, SS	14640	Wheel cleaner, rulon
HHS040S	Hex head screw, 1/4 - 20 x 3/4, SS	151	Conduit, watertight
HHS041S	Hex head screw, 1/4 - 28 x 1/2, SS	16015-3	Motor base plate wing nut
HHS0481S	Hex head screw, 1/4 - 20 x 1 1/2, SS	16155-13	Carriage stop angle, SS
HHS055S	Hex head screw, 5/16 - 18 x 3/4, SS	16159	Meat carriage bearing
HHS058S	Hex head screw, 5/16 - 18 x 7/8, SS	16200	Carriage stop, movable
HHS060S	Hex head screw, 5/16 - 18 x 1, SS	16220-1	Carriage sop, fixed
HHS070S	Hex head screw, 3/8 - 16 x 1, SS	16226A-9	Thread cutting nut, palm switch
HHS075S	Hex head screw, 3/8 - 16 x 1 1/4, SS	17211-22	Finger lift shim, .022
HHS085S	Hex head screw, 3/8 - 16 x 2, SS	17211-35	Finger lift shim, .035
HHS110S	Hex head screw, 1/2 - 20 x 1, SS	175S	Thumb guard, nylon
HHS125S	Hex head screw, 1/2 - 13 x 1, SS	175-1-S	Thumb guard nut, SS
HN05S	Hex nut, 8 - 32, SS	175-2-S	Thumb screw, 1/4 - 20 x 1/2, SS
HN10S	Hex nut, 10 - 32, SS	177	Nylon filler
HN15S	Hex nut, 1/4 - 20, SS	179	Wheel cleaner
HN20S	Hex nut, 5/16 - 18, SS	18D239-4	Left rear bearing angle
HN25S	Hex nut, 3/8 - 16, SS	18D239-5	Left front bearing angle
HN30S	Hex nut, 3/8 - 16, light jam, SS	18120EZ-B3	Guide bar, EZ-flow
HN35S	Hex nut, 3/8 - 16, machine screw, SS	18212W	Platter rod
HN40S	Hex nut, 1/2 - 13, light jam, SS	18230DL	Upper shaft seal, double lip
HN43S	Hex nut, 1/2 - 13, SS	18231DL	Lower shaft seal, double lip
HN45S	Hex nut, 1/2 - 20, SS	18247	Upper shaft
HN49	Hex nut, 5/8 - 11, zinc plated	18251AL	Pulley, upper V-belt, 12.8 x 1 1/2, Al.
HN55S	Hex nut, 5/8 - 18, jam, SS	18275	Meat gauge arm
H462-2	Switch guard, SS	18275-2	Meat gauge plate only, SS
LW05S	Lock washer, #10, SS	18300	Lower shaft woodruff key
LW10S	Lock washer, 1/4, SS	18360	Lower bearing housing
LW15S	Lock washer, 5/16, SS	18361	Lower shaft
LW20S	Lock washer, 3/8, SS	194	Saw guide bar lock pad, brass
LW30S	Lock washer, 1/2, SS	194KS-1	Lock knob lock knob assembly
LW35S	Lock washer, 5/8, SS	196	Tension spring
MC-10E	Cotter pin, 1/8 x 1, SS	211	Finger lift
RHS074S	Round head screw, 8 - 32 x 3/4, SS	211A-291Q	Fastener knob, 3/8 - 16, 4 point
RHS10S	Round head screw, 10 - 32 x 3/4, SS	211Q	Fastener knob, 5/16 - 18, 4 point
RHS30S	Round head screw, 1/4 - 20 x 7/8, SS	22003-6	Lower wheel, 22", 6 spoke
SSS04S	Set screw, 10-24 x 1/4, cup pt, SS	22003U-6	Upper wheel, 22", 6 spoke
SSS05S	Set screw, 10-24 x 3/8, cup pt, SS	221-68	V-belt, 68"
SSS20	Set screw, 3/8 - 16 x 3/8, cup pt, SS	221-70	V-belt, 70"
S116RS	Saw guide bar spacer block, SS	224-1P	Conduit connector, straight, WT
S119A	Saw guide bar in stationary bar, SS	225-1P	Conduit connector, 90 °, WT
S12132	Rear blade cleaning unit	226-28	Connector washer
S155EZ-3	Stand-off, EZ-flow	226EE-CO11K	Contact, LS11K, 11S-CO, 208/220V
S18252	Upper shaft lock nut, SS	226EE-EO	Contact, LS05.10-EO, 440V
S18253	Upper wheel aligning screw, SS	226EE-OL08L	Overload, B05-L, (5.5-8A)
S200B1	Stop stud, SS	226EE-OL18O	Overload, B18K-O, (14.5-18A)
S229	Wheel cleaner arm spring, SS	226EE-540	Switch assembly, 5HP, 208/220-60-3
S235	Taper pin, #4 x 3/4, SS	226EE-544	Switch assembly, 5HP, 440-60-3
S244	Wheel cleaner arm stud, SS	226EE-548	Switch assembly, 5HP, 575-60-3
S249	Base door lock handle	226EE-605	Switch assembly, 5HP, 208/220-60-3 for double rolling tables
S252X	Shaft lock nut, SS	234	Grease fitting
S262	Meat gauge release handle, SS	237	Upper shaft castellated lock nut
S264-1	Meat gauge release hand wheel, SS	238	Upper shaft castellated lock washer
S265	Meat gauge release spring, SS		

## MODEL 55 ITEM NUMBERS AND DESCRIPTIONS

Item No.	Description	Item No.	Description
241GR	Wire, green, 12 gauge	55140	Safety saw guard w/ 708 decal
241WH	Wire, white, 12 gauge	55154	Head door
247A	Upper shaft bearing spacer washer	55165	Platter rod, RH platter top
256P	Safety end cut pusher plate	55170	Blade tension cap gauge
264G	Meat gauge hand wheel groove pin	55171	Blade tension adjustment housing
267	Meat gauge release cotter pin	55172	Blade tension screw
271AL	Meat gauge worm gear, Aluminum	55173	Blade tension adjustment handle
272-7-1	Lock knob, 5/16 - 18, 3 point	55174	Upper wheel hinge plate
272-8	Cap nut, 5/16 - 18, SS	55177	Front stationary table assembly
272-9	Hex bolt, 5/16 - 18 x 2, SS	55179	Support, channel bracket front panel
272-12	Brass ball	55181	Base foot outrigger, front
272-13	Hex bolt, 5/16 - 18 x 1 1/4, SS	55182	Meat gauge bracket
272-14	Castle nut, 5/16 - 18, SS	55184	O-ring, blade tension screw
310	Waved washer	55185	Meat gauge gear rack
311	Rubber bumper for fixed stop	55189-1	Saw guide bar, 32"
311-1	Rubber bumper for movable stop	55190-2	Reinforcement bar, 30"
360A1	Lower bearing housing grease fitting	55195	Right top fixed table, platter
360B-2	Lower bearing housing tilt set screw	55198	Bearing angle, right rear
362	Lower bearing housing cap	55199	Bearing angle, right front
36-239LN	Lock nut, 1 1/4 - 12, SS	55200	Rear meat carriage, dbl rolling tables
36-239L-10A	Solid leg, 10", SS	55203	Front meat carriage, dbl rolling tables
36-242R	Base door lock, right	55204	Rim extension, right
375	Drive screw	55205	Front box channel, dbl rolling tables
376	Drive screw, #10 x 1/2, SS	55206	Channel brkt, rt side, dbl rolling tables
4-401AL	Pulley, motor, 5 x 1 1/8, aluminum	55207	Channel brkt, lt side, dbl rolling tables
512	Upper wheel hub gasket	55210	Tie bar, left
531	Retaining ring	55211	Tie bar, right
55102	Base foot outrigger angle, rear, 30"	55212	Top front panel, channel bracket
55104	Base door, right, hinged	55213	Filler plate, dbl rolling tables
55105	Left panel with handle	55290	Platter bracket
55106	Scrap bucket	55291	Platter - right top
55109	Channel bracket, top	55302HT	Saw blade, 164 1/2 x 3/4 x .022 HT, 3TPI
55110	Control panel, channel bracket	55309	Platter assembly - left top
55111	Front panel, channel bracket	55312	O-ring for tension cap gauge
55114-1	Lower cleaning unit weldment	55313	Plastic washer, tension spring
55123	Motor mount weldment	55314	O-ring, plastic washer
55125	Pivot block, motor mount	55317	Platter, right top fixed table
55126	Channel, EZ-flow	55327	Switch bracket, starting w/ 55059
55126-FT	Channel, fixed front table	601	Upper saw guide bracket
55127	Meat carriage angle, EZ-flow	602B	Upper blade back-up guide, carbide
55131	Platter, right top	653PC-E	Warning label, English
55133	Switch bracket	653PC-F	Warning label, French
55134-WEG-HE	Motor, Weg 5HP, 208-220/460-60-3, TE	653PC-SP	Warning label, Spanish
55134-575	Motor, Baldor, 5HP, 575-60-3, TE	671	Wall poster
55137	Adjustment stud, motor mount	708	Decal "Danger Exposed Blade"
55138	Hinge bracket, upper wheel	800H-PB	Pushbutton station, watertight, SS

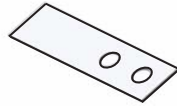
### ASSEMBLIES FOR MODEL 55

Item No.	Description	Item No.	Description
AS12132	Rear cleaning unit assembly	55164	Left top platter assembly
AS415D	Stationary bar assembly, SS	55177	Front stationary table assembly
A16112	Head door latch assembly	55186	Channel assembly, EZ-flow
A16200	Carriage stop assembly, movable	55191	Head & door assembly, SS
A16220-1	Carriage stop assembly, fixed	55192	Blade tension assembly
A16226A-SG	Green/Red palm button assembly	55193	Hinge bracket assembly, upper wheel
A175S	Thumb guard assembly	55194	Upper wheel assembly w/ hinge plate
A18227	Bearing cup/cone assembly	55196	Upper wheel assembly w/o hinge plate
A18247	Upper shaft/bearing assembly less wheel	55197	Upper hinge plate assembly
A18275	Meat gauge plate assembly	55216	Meat carriage assembly
A18360	Lower brng housing assembly less wheel	55233	Head door assembly, SS
A262	Meat gauge release assembly	55234	Finger lift assembly, removable
A295	Wheel cleaner assembly	55235-2	Saw guide bar assembly, double
A36-2001	Carriage stop asbly, movable, dbl roll	55236	Meat gauge assembly
A36-2002	Carriage stop asbly, fixed, dbl roll	55237	Meat gauge bracket assembly
A602	Saw guide assembly, upper	55238	Platter assembly, before s/n 55026
		55241-1	Front cleaning unit assembly

# WEARABLE SAW PARTS THAT WILL FIT BIRO MODEL 55



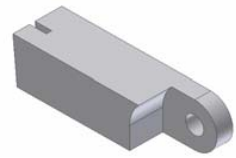
Item No. **S130**  
SAW CLEANER BRACKET



\*Item No. **131**  
STEEL BLADE CLEANER



\*Item No. **S119A**  
LOWER SAW GUIDE



\*Item No. **177**  
NYLON FILLER



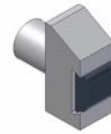
Item No. **601**  
UPPER SAW GUIDE BRACKET



\*Item No. **S602B**  
UPPER SAW GUIDE  
W/ BEVELED CARBIDE



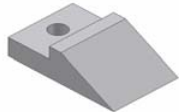
\*Item No. **S265**  
MEAT GAUGE SPRING



\*Item No. **S608**  
LOWER BLADE BACKUP  
W/ CARBIDE



\*Item No. **S268**  
FILLER & GUIDE STUD



\*Item No. **179**  
WHEEL CLEANER



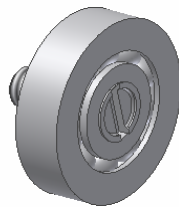
\*Item No. **S244**  
WHEEL CLEANER ARM STUD



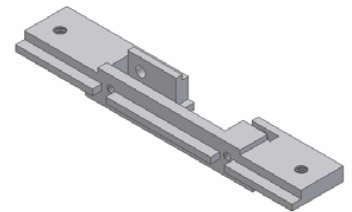
\*Item No. **S229**  
WHEEL CLEANER  
ARM SPRING



Item No. **S295**  
WHEEL CLEANER ARM



Item No. **16159**  
CARRIAGE BEARING



Item No. **S415D**  
STAINLESS STATIONARY BAR



NOT TO SCALE



USE PARTS REPAIR KIT PART NO. **55700**

\* included in repair kit.



## LIMITED WARRANTY:

**WARRANTY:** The BIRO Manufacturing Company warrants that Model 55 Power Meat Saw will be free from defects in material and workmanship under normal use and with recommended service. BIRO will replace defective parts, which are covered by this limited warranty, provided that the defective parts are authorized for return, shipping charges prepaid, to a designated factory for inspection and/or testing.

**DURATION OF WARRANTY:** The warranty period for all parts covered by this limited warranty is one (1) year from date of Inspection/Demonstration advised on the returned Warranty Registration Card, or eighteen (18) months from original factory ship date, whichever occurs first, except as noted below.

**PARTS NOT COVERED BY WARRANTY:** The following are **not** covered by this limited warranty: wearable parts on the cleaning system such as saw blade cleaners (Item No. 131), wheel cleaners (Item No. 179), blade backup guides (Item No's. S602B, and S119A), and the nylon filler (Item No. 177). This limited warranty does not apply to machines sold as used, rebuilt, modified, or altered from the original construction in which the machine was shipped from the factory. (WATER CONTAMINATED ELECTRICAL SYSTEMS ARE NOT COVERED UNDER THIS LIMITED WARRANTY.) BIRO is not responsible for electrical connection of equipment, adjustments to switch controls or any other electrical requirements, which must be performed only by a certified electrician. BIRO is not responsible for service charges or labor required to replace any part covered by this limited warranty or for any damages resulting from misuse, abuse, lack of proper or recommended service.

**EXCLUSION OF WARRANTIES AND LIMITATION OF REMEDIES:** BIRO gives no warranties other than those expressly stated in this limited warranty. THE IMPLIED WARRANTY OF MERCHANTABILITY, THE IMPLIED WARRANTY OF FITNESS FOR PROCESSING FOOD PRODUCTS, AND ALL OTHER IMPLIED WARRANTIES ARE SPECIFICALLY EXCLUDED. BIRO IS NOT LIABLE FOR CONSEQUENTIAL OR INCIDENTAL DAMAGES, EXPENSES, OR LOSSES. THE REMEDIES PROVIDED IN THIS BIRO LIMITED WARRANTY ARE PURCHASER'S SOLE AND EXCLUSIVE REMEDIES AGAINST BIRO.

**REGISTRATION CARDS:** You must sign, date and complete the warranty registration card supplied with each machine. The warranty card must be returned to The BIRO Manufacturing Company for proper registration. If no warranty card is returned to BIRO, the warranty period will begin from the date the machine was originally shipped from the factory.

### HOW TO GET SERVICE:

1. Contact the agency from whom you purchased the machine; or
2. Consult the yellow pages of the phone directory for the nearest authorized dealer; or
3. Contact Biro Manufacturing Company for the nearest authorized service entity in your area.

### BIRO MANUFACTURING COMPANY

1114 West Main St.  
Marblehead, OH 43440  
Ph. 419-798-4451  
Fax 419-798-9106  
Service@birosaw.com  
www.birosaw.com