



COMMERCIAL ELECTRIC ENERGY SAVER REPLACEMENT PARTS LIST
**ElectriFLEX MD™ Medium Duty Three Element (E32)
Models**



Models Covered:

E32-50S*

E32-80R*

E32-120R*

***Denotes warranty year**

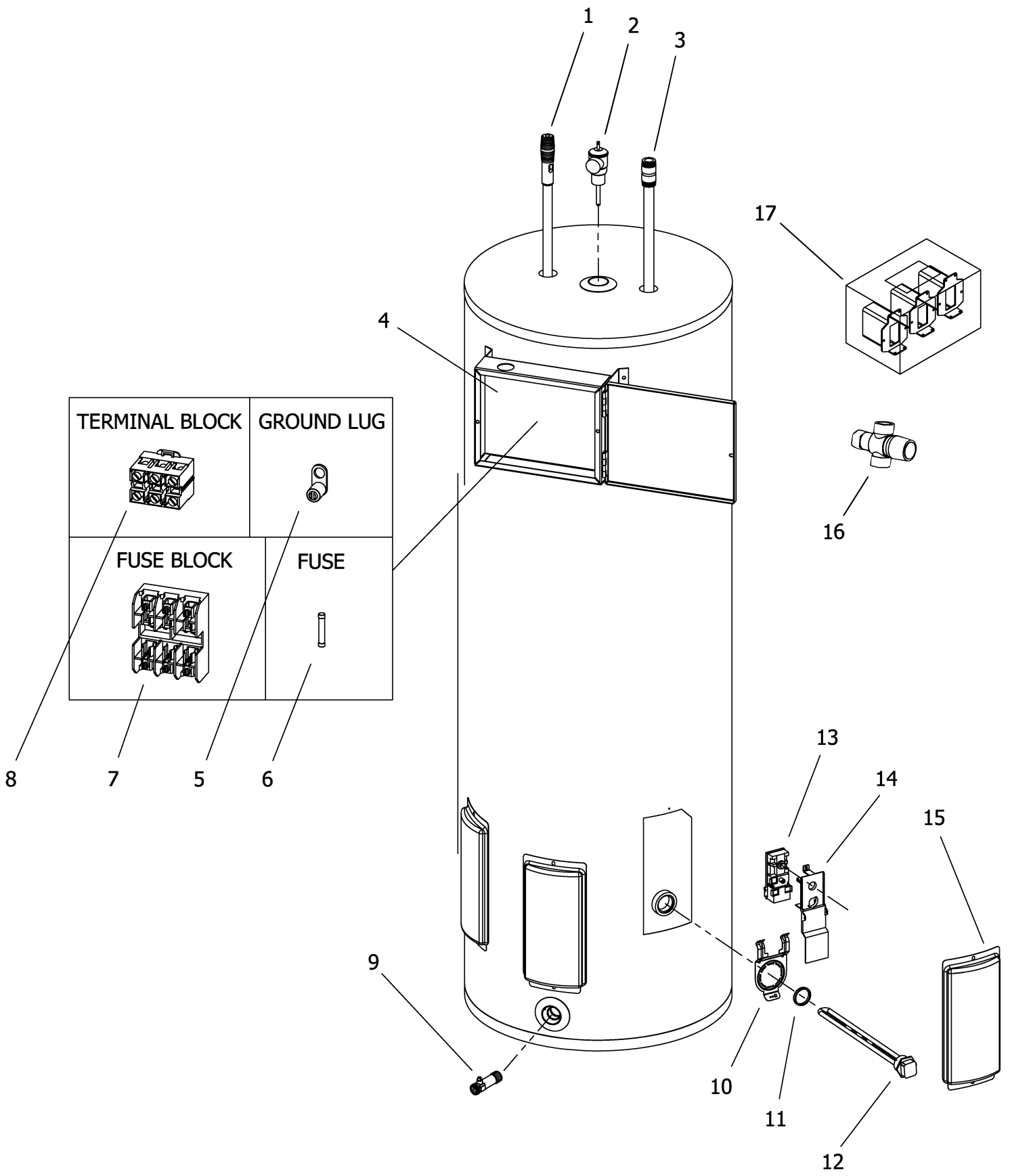
**Effective: March, 2025
ECO 8764**

**NOTE: BOTH MODEL AND SERIAL
NUMBERS ARE REQUIRED FOR
ORDERING REPLACEMENT PARTS**

Dimensions and specifications
subject to change without notice.



As required by the state of California Proposition 65.



Item	Description	Model E32-50S*	Model E32-80R*	Model E32-120R*
1	Hot water outlet/Anode (magnesium)#	415-47781-04	415-47781-04	415-47781-04
2	T&P Relief valve	415-40594-02	415-40594-02	415-40594-02
3	Cold water Inlet Dip tube (Hydrojet)	229-51560-02	229-51560-03	229-51560-03
4	Control Box with Cover	239-43888-00	239-43888-00	239-43888-00
5	Ground Lug	264-32251-00	264-32251-00	264-32251-00
6	Top Fuse 30 Amp	264-44364-00	264-44364-00	264-44364-00
	Bottom Fuse 40 Amp**	264-32267-00	264-32267-00	264-32267-00
7	Fuse Block	264-44365-00	264-44365-00	264-44365-00
	Fuse Block**	264-32264-00	264-32264-00	264-32264-00
8	Terminal Block	239-43890-00	239-43890-00	239-43890-00
9	Brass Drain Valve	415-48070-02	415-48070-02	415-48070-02
10	Thermostat Bracket	239-50689-00	239-50689-00	239-50689-00
11	Element Gasket	223-34019-00	223-34019-00	223-34019-00
12	Incoloy Heating Element	SEE CHART	SEE CHART	SEE CHART
13	Thermostat	415-51143-00	415-51143-00	415-51143-00
14	Thermostat Protector	223-40399-00	223-40399-00	223-40399-00
15	Access Cover	243-36618-02	243-36618-02	243-36618-02
16	Tempering Valve (optional)	239-51778-00	239-51778-00	239-51778-00
17	Leg Kit	265-52130-00	265-52130-00	265-52130-00

#Anode may need to be cut to length; see end of this parts list for further information.

*Applies to all warranties

** Parts unique to all 18 KW, 208 Volt, Single Phase Models

Total Heater kW	Element Wattage	Item 12, Incoloy Heating Element		
		208 Volts [▲]	240 Volts [▲]	480 Volts
6	2000	415-42545-14	415-42545-02	220-42553-01
9	3000	415-42545-12	415-42545-15	220-42553-08
12	4000	415-42545-17	415-42545-12	220-42553-03
12.3	4100	415-42543-07	415-42545-21	415-42553-16
13.5	4500	415-42545-19	415-51328-07	220-42553-11
15	5000	265-42543-04	415-42545-18	220-42553-12
18	6000	265-42543-06	415-42545-19	220-42553-14

1. Obtain total heater KW and Voltage from heater rating plate.
2. Locate total heater KW from table above that matches total heater KW.
3. Move across the table (to the right) to heating element matching the required voltage.

▲ Element gasket is included with the kit.

AVAILABLE CONVERSION KITS

Total Heater kW	Element Wattage	Conversion Kits					
		208 Volts	240 Volts	277 Volts	380 Volts	415 Volts	480 Volts
6	2000	415-43942-13**	415-43942-07**	-	415-43942-19**	415-43942-31**	415-43942-01**
9	3000	415-43942-14**	415-43942-08**	-	415-43942-20**	415-43942-32**	415-43942-02**
12	4000	415-43942-42**	415-43942-09**	-	415-43942-46**	415-43942-54**	415-43942-03**
12.3	4100	415-43942-60	415-43942-58	415-43942-61	-	-	415-43942-59
13.5	4500	415-43942-43	415-43942-10	415-43942-62	415-43942-47	415-43942-55	415-43942-37
15	5000	415-43942-44	415-43942-40	415-43942-63	415-43942-48	415-43942-56	415-43942-38
18	6000	415-43942-45	415-43942-41	415-43942-64	415-43942-49	415-43942-57	415-43942-39

1. Locate total heater KW as required.
2. Move across the table (to the right) to conversion kit matching the required voltage.

** For Canadian installation ONLY

Reference Chart of Anode Length by Model

Model	AOD Anode Cut Length (End to end)	
	Inches	Millimeters
E32-50S*	39.13	994
E32-80R*	51.13	1299
E32-120R*	51.13	1299



United States

Sales 1-800-523-2931
Technical Support 1-800-334-3393
Email techsupport@bradfordwhite.com
Warranty 1-800-531-2111
Email warranty@bradfordwhite.com
Service Parts 1-800-538-2020
Email parts@bradfordwhite.com

Canada

Sales 1-866-690-0961 1-905-203-0600
Fax 905-636-0666
Warranty 1-800-531-2111
Email warranty@bradfordwhite.com
Technical Support 1-800-334-3393
Email techsupport@bradfordwhite.com
Service Parts and Orders ca.orders@bradfordwhite.com

For U.S. and Canada field service, contact your professional installer or local Bradford White sales representative.

International

General Contact international@bradfordwhite.com