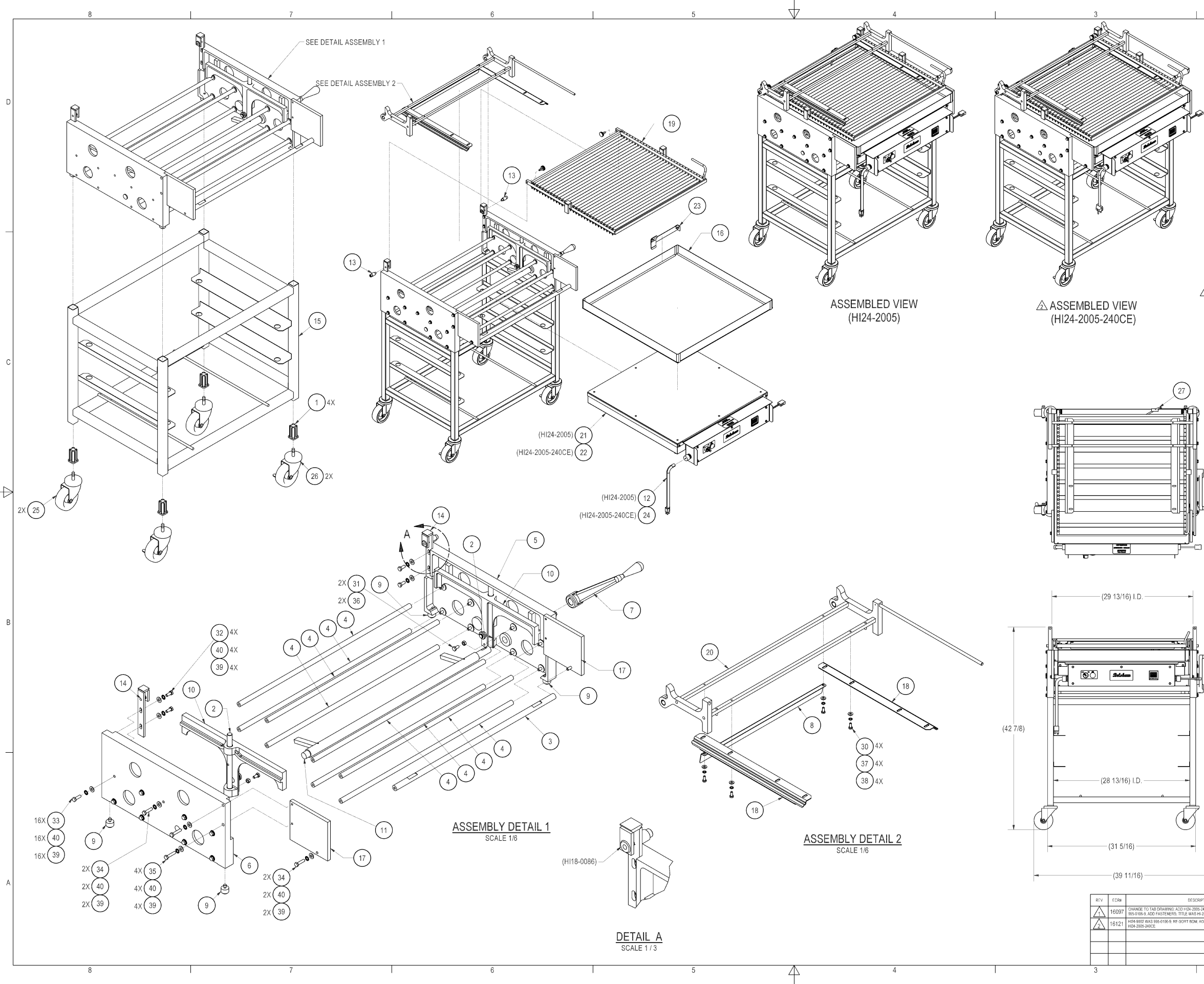


Parts List Drawing Insert Page

Title: High Production Icers
Model: HI-24F
Item Number: 20022 HI-24F-120,50/60,1-D
Final Assembly Drawing: HI24-2005 Mechanical Assembly Drawing
Sub-Assemblies: HI24-1300TAB Heating Panel Assy; 120V
[HI24-1001 Retainer Frame Assy](#)



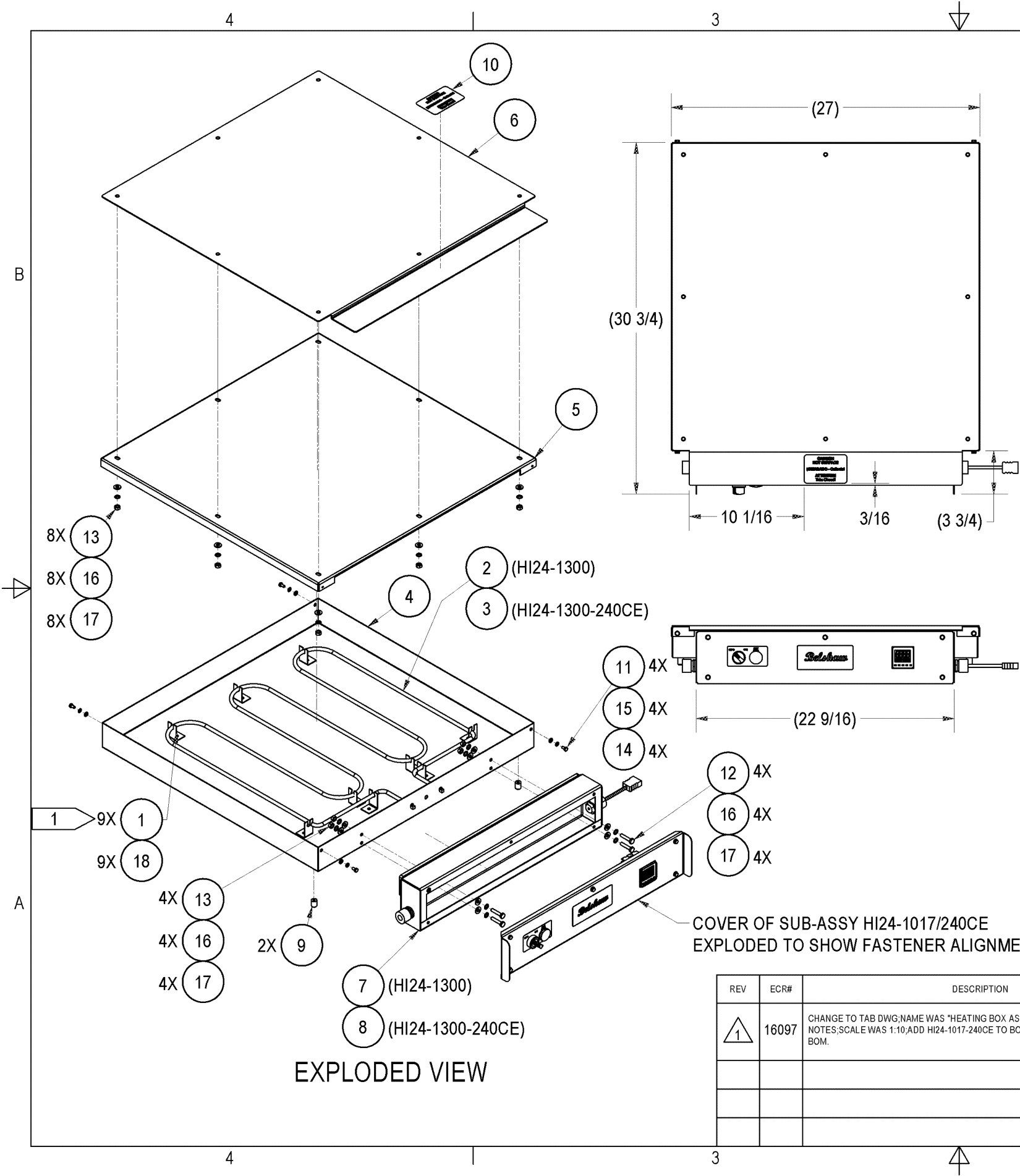
				BILL OF MATERIAL	
ITEM	HI24-2005 QTY	HI24-2005-240CE QTY	PART NUMBER	DESCRIPTION	
1	4	4	FT6-0120	CASTER SOCKET; 18 GA, 1.25, RT-POLY	
2	2	2	HI18-0008	LIFT SHAFT	
3	1	1	HI18-0030	SPACER SHAFT-SHORT	
4	8	8	HI18-0031	SHAFT; SPACER-LONG	
5	1	1	HI18-0032	SIDE PANEL-RIGHT (MACH)	
6	1	1	HI18-0033	SIDE PANEL-LEFT (MACH)	
7	1	1	HI18-0035	LIFT HANDLE	
8	1	1	HI18-0037	TRAY STOP	
9	4	4	HI18-0042	FOOT	
10	2	2	HI18-0502	LIFT BRACKET ASSEMBLY	
11	1	1	HI18-0503	LIFT AXLE ASSEMBLY	
12	1	--	HI18-0505	ASSY; POWER CORD; 120V, 15AMP	
13	2	2	HI18-0506	HINGE BOLT ASSEMBLY	
14	2	2	HI18-0521	ASSY; MOUNTING BRACKET; TRAY HOLDER	
15	1	1	HI18-1010SS	WELDMENT; FRAME ASSEMBLY	
16	1	1	HI24-0006	ICING PAN	
17	2	2	HI24-0008	PAN EXTENSION	
18	2	2	HI24-0018	TRAY HOLDER	
19	1	1	HI24-1001	DONUT RETAINER FRAME ASSY	
20	1	1	HI24-1002	ASSEMBLY; TRAY RETAINER	
21	1	--	HI24-1300	HEATING BOX ASSEMBLY, 120V	
22	--	1	HI24-1300-240CE	HEATING BOX ASSY, 240V CE	
23	1	1	HI24-7008	BRACKET, THERMOCOUPLE	
24	--	1	HI24-9002	POWER CORD; CEE 7/7	
25	2	2	SC600-0056	CASTER, 4" DIA X 1-1/4"W	
26	2	2	SC600-0056B	CASTER, 4" DIA W/BRAKE	
27	(REF)	(REF)	TCPL-0004A	THERMOCOUPLE, TYPE J, MALE	
30	4	4	903-0973SS	SST, 1/4-20 X 0.625 HEX HEAD MACHINE SCREW	
31	2	2	903-1319SS	5/16-18X1 UNC SS HEX HEAD MACHINE SCREW	
32	4	4	903-1321	5/16-18X3/4 UNC SS HEX HEAD MACHINE SCREW	
33	16	16	903-1330	5/16-18X1 UNC SS HEX HEAD MACHINE SCREW	
34	4	4	903-1335SS	5/16-18X1-1/4 SS HEX CAP SCREW	
35	4	4	903-1350	5/16-18X1-1/2 UNC SS HEX HEAD MACHINE SCREW	
36	2	2	903-6103	5/16-18 UNC SS HEX NUT	
37	4	4	903-7529	WASHER, INTERNAL TOOTH LOCK, 1/4 SST	
38	4	4	903-7531SS	SST, 1/4 FLAT WASHER, REGULAR	
39	28	28	903-7540SS	SST, 5/16 FLAT WASHER, REGULAR	
40	28	28	903-7542SS	WASHER, INTERNAL TOOTH LOCK, 5/16 SST	

REV	ECRN	DESCRIPTION	DRAWN	DATE	APPD	MFR
16097		CHANGE TO TAB DRAWING ADD HI24-2005-240CE TO BOM ADD HI18-0505, HI18-0506, HI18-0521, HI18-1010SS, HI18-1001, HI18-1002, HI18-1002 TO BOM ADD ASSEMBLY VIEW OF HI24-2005-240CE	CPB	02/02/15	WJS	N/A
16121			CPB	02/27/15	WJS	N/A

DO NOT SCALE DRAWING	SCALE: 1:10	DATE: 01/14/15	SHEET: 1 OF 1	DRAWING NUMBER: HI24-2005TAB	PAGE: 2
----------------------	-------------	----------------	---------------	------------------------------	---------



HI-24F - TAB DRAWING



BILL OF MATERIAL				
ITEM	HI24-1300 QTY	HI24-1300-240CE QTY	PART NUMBER	DESCRIPTION
1	9	9	HI18-0053	ELEMENT RETAINER BRACKET
2	1	--	HI24-0001	HEATING ELEMENT 120V/1200W
3	--	1	HI24-0001-240	HEATING ELEMENT 240V/1200W
4	1	1	HI24-0004	ELEMENT HOUSING
5	1	1	HI24-0005	ELEMENT HOUSING COVER
6	1	1	HI24-0011	HEAT TRANSFER PLATE
7	1	--	HI24-1017	SWITCH BOX ASSY 120/60/1
8	--	1	HI24-1017-240CE	SWITCH BOX ASSY 240/60/1 CE
9	2	2	HI24-6000	SAFETY PIN
10	1	1	MK-0186	LABEL; CAUTION - HOT
11	4	4	903-0519SS	SST, #10-24 X 0.375 HEX HEAD MACHINE SCREW
12	4	4	903-1007	SST, 1/4-20 X 1.25 HEX HEAD MACHINE SCREW
13	12	12	903-5200	1/4-20UNC SS HEX NUT
14	4	4	903-7513	#10 SS FLAT WASHER
15	4	4	903-7514	WASHER, INTERNAL TOOTH LOCK, #10 SST
16	16	16	903-7529	WASHER, INTERNAL TOOTH LOCK, 1/4 SST
17	16	16	903-7531SS	SST, 1/4 FLAT WASHER, REGULAR
18	9	9	905-0720	RIVET; 1/8 X 5/16 SS

NOTES:

- 1 POP RIVET BRKT (HI18-0053) ONTO HOUSING (HI24-0004). PLACE ELEMENT INTO BRKTS. BEND PART OF BRKT BACK TO ORIGINAL POSITION

REV	ECR#	DESCRIPTION	DRAWN	DATE	APP'D	MFR
1	16097	CHANGE TO TAB DWG; NAME WAS "HEATING BOX ASSEMBLY"; ADD HI24-1300/-240CE NOTES; SCALE WAS 1:10; ADD HI24-1017-240CE TO BOM; ADD FASTENERS; RE-SORT BOM.	CPB	02/02/15	WJS	N/A

THE INFORMATION CONTAINED IN THIS DRAWING IS THE SOLE PROPERTY OF BELSHAW BROS., INC. ANY REPRODUCTION IN PART OR WHOLE WITHOUT THE WRITTEN PERMISSION OF BELSHAW BROS., INC. IS PROHIBITED.

UNLESS OTHERWISE SPECIFIED, DIMENSIONS ARE IN INCHES
TOLERANCES, UNLESS OTHERWISE NOTED:
XX ± 1/32 () = REFERENCE
XX ± .030 XXX ± .010
ANGLE = ± 1'

DO NOT SCALE DRAWING

SCALE: 1:8 DRAWN: CPB APP'D: WJS MFR: N/A DATE: 01/14/15

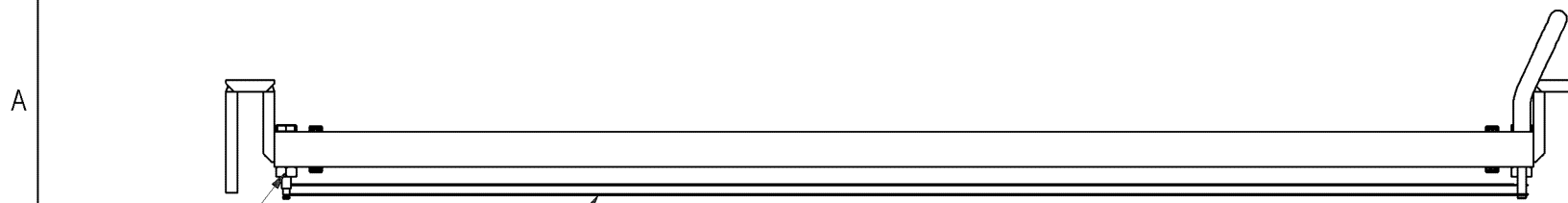
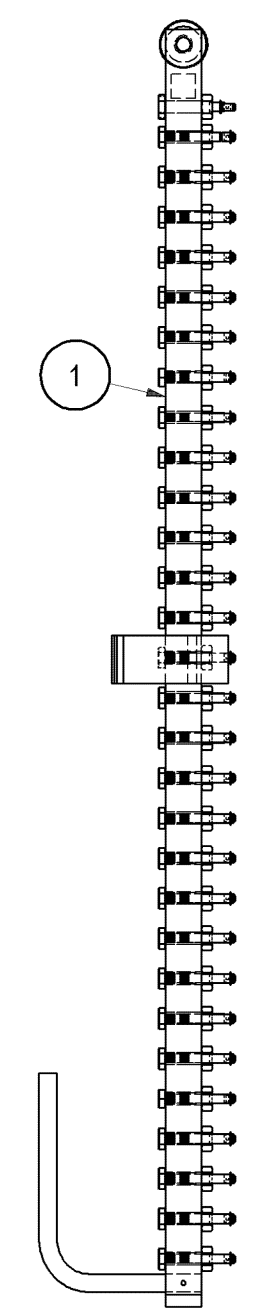
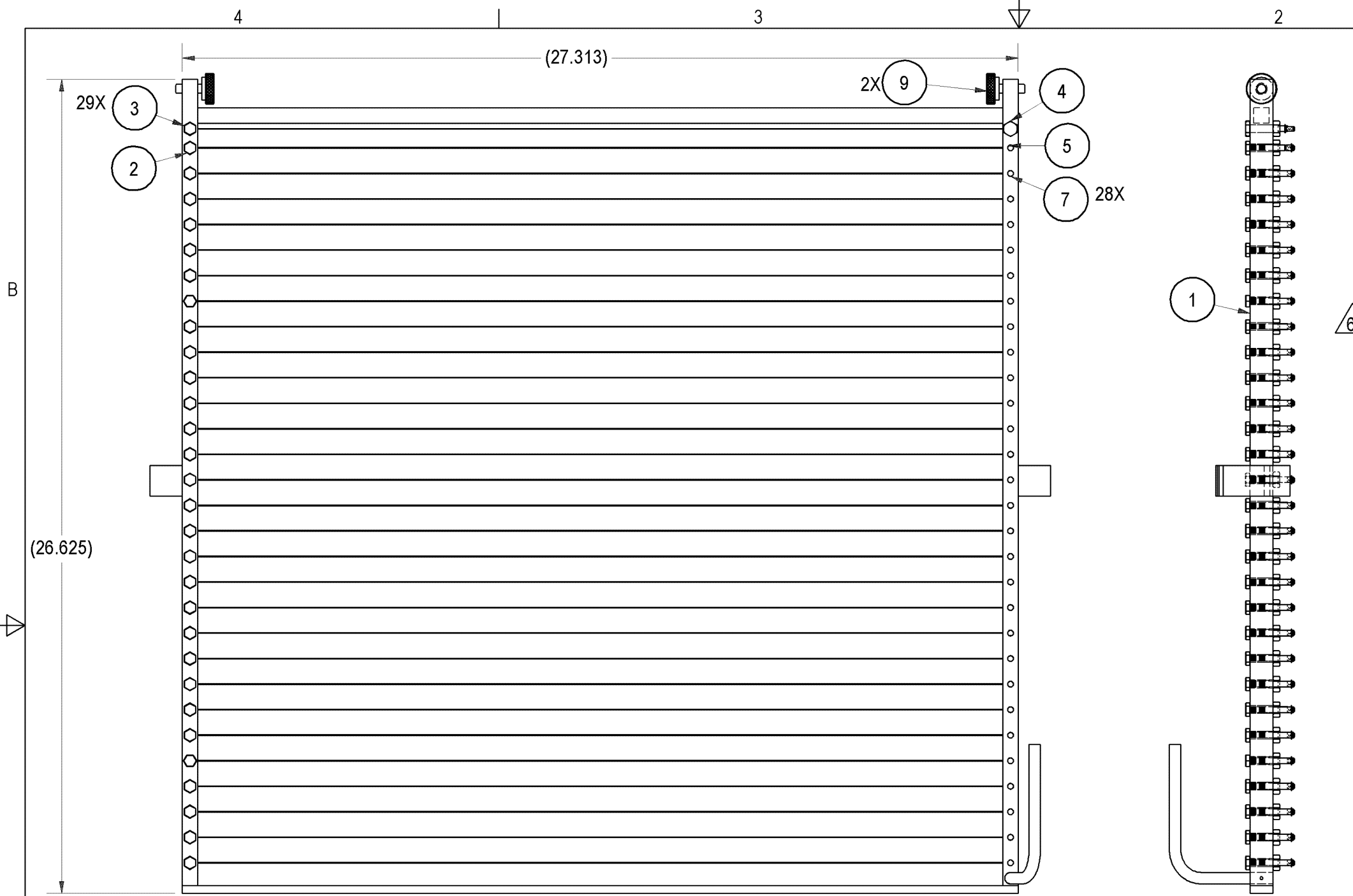
SIZE: B SHEET: 1 OF 1 DRAWING NUMBER: HI24-1300TAB REV: 1

Belshaw
BELSHAW BROTHERS INC., SEATTLE, WASHINGTON

TITLE: HEATING PANEL ASSY 1

MATERIAL: SEE B.O.M.

C:\VAULT\DESIGNS\RELEASED\DESIGNS\HI24\HI24-1300.HRW



BILL OF MATERIAL			
ITEM	QTY	PART NUMBER	DESCRIPTION
1	1	HI24-0505	SUB-ASSY; DONUT RETAINER FRAME
2	1	HI18-0022	TENSION BOLT WIRE
3	29	HI18-0002	TENSION BOLT WIRE
4	1	HI18-0051	TENSION BOLT WIRE (SAFETY, FRONT)
5	1	HI18-0019	WIRE RETAINER PIN - DUAL WIRE
6	31	903-5210	1/4-28 UNF SS JAM HEX NUT
7	28	HI18-0004	WIRE RETAINER PIN
8	30	HI18-0046	WIRE; S.S.
9	2	HI18-0041	KNOB - DONUT RETAINER FRAME

REV	ECR#	DESCRIPTION	DRAWN	DATE	APPD	MFR
5	4758	REDRAWN IN INVENTOR; CORRECT QTY'S	RG	05/19/03	CMK	
6	5222	ADDED (2) HI18-0041	O.F.	09/08/03	CMK	

THE INFORMATION CONTAINED IN THIS DRAWING IS THE SOLE PROPERTY OF BELSHAW BROS., INC. ANY REPRODUCTION IN PART OR WHOLE WITHOUT THE WRITTEN PERMISSION OF BELSHAW BROS., INC. IS PROHIBITED.

UNLESS OTHERWISE SPECIFIED, DIMENSIONS ARE IN INCHES
TOLERANCES, UNLESS OTHERWISE NOTED:
XX = ± 1/32 () = REFERENCE
.XX = ± .030 .XXX = ± .010
ANGLE = ± 1'

DO NOT SCALE DRAWING

SCALE 1:4 DRAWN BLW APPD RVS MFR DATE 02/09/98

Belshaw
BELSHAW BROTHERS INC., SEATTLE, WASHINGTON

TITLE: DONUT RETAINER FRAME ASSY

MATERIAL: SEE B.O.M.

SIZE B SHEET 1 OF 1 DRAWING NUMBER HI24-1001 REV 6

BOM: HI18-1706 R03					
ITEM	Description	Manufacturer Part Number	QTY	Unit	Belshaw Part Number
1	FAN, AXIAL, 120V 50/60HZ, 2.36	DRIDN: DA60AP-11-1WB	1	EA	#ACF-0004
2	CONTACT BLOCK N.O. 22MM	SQUARE D: ZBE101	2	EA	#CTBN-0004
3	LED BLK, YEL, 120V, 22MM	SQUARE D: ZBVG5	1	EA	#CTBN-0016
4	LED BLK, GRN, 120V, 22MM	SQUARE D: ZBVG3	1	EA	#CTBN-0017
5	CONTACT BLK HLDR	SQUARE D: ZB4BZ009	2	EA	#DPBI-0002
6	SWT, 2POS, MAINT, ILL, GRN	TELEMECANIQUE: ZB4BK1233	1	EA	#DSSI-0017
7	LENS, PILOT LIGHT YELLOW 22MM	TELEMECANIQUE: ZB4BV053	1	EA	#PLT-0018
8	RLY, 35A, DPDT, 120VAC	DELTRDL: 20844-84	1	EA	#RLY-0031
9	THERMOCOUPLE ASSY, TYPE J	EUSTIS: ED-128-14	1	EA	#TCPL-0004
10	THERMOCOUPLE, TYPE J, MALE	EUSTIS: FEJ000JX024SX	1	EA	#TCPL-0004A
11	SNAP DISC THERMOSTAT 130 DEG	SUPCO: L130	1	EA	DPC-0130-130
12	WIRE HARNESS, HI18/24 ICER 120	BELSHAW FAB	1	EA	HI18-1706-1
13	OMRON 100-240 VAC, HI18/24	OMRON: E5CC-RX3ASM-000	1	EA	TJ-0184D-1
14	TB, MINI, 2.5MM, 24A, GRAY	AB: 1492-LMJ3	10	EA	990-0329
15	TB, MINI GND, 2.5MM, 24A, GRN	AB: 1492-LMJG3	1	EA	990-0343
16	DIN RAIL 15MMX55MMX1M	AB: 1492-DR3 (PKG OF 10)	0.16	EA	990-0344
17	TB, MINI, END ANCHOR	AB: 1492-EAJ15	2	EA	990-0345
18	TB, JUMPERS, 10 POLE, MINI	AB: 1492-CJLJ5-10-BL	1	EA	990-0346
19	TB, MARKERS, MINI, 10 BLANK	AB: 1492-MSXSH1-10	2	EA	990-0347
20	TB, MINI, END BARRIER	AB: 1492-EBLMJ3	5	EA	990-0348
21	FAN GUARD, STEEL, 2.36 IN	DAYTON: 3RP19	<REF>1	EA	#ACF-0006
22	LIQ-TITE CORDGRIP .17-.47 BLK	HEYCO: 3251	<REF>2	EA	905-0611
23	CORD CONN SEAL O RING 1/2	HUBBLE: 20509001	<REF>2	EA	990-1015
24	HEATER ELEMENT (HI18)	TRI-117XX	<REF>1	EA	HI18-0036
25	POWER CORD 120V, 8 FT 14/3 15A	GRANGER: IFD91	<REF>1	EA	HI18-0505
26	HEATER ELEMENT (HI24)	1X197RK2557-01	<REF>1	EA	HI24-0001
27	SWITCH BOX COVER	BELSHAW FAB	<REF>1	EA	HI24-7005
28	SWITCH BOX	BELSHAW FAB	<REF>1	EA	HI24-8006
29	LEGEND PLATE	BELSHAW FAB	<REF>1	EA	HI24-9001

△¹

△²

△¹

△¹

REVISION HISTORY: R1				
SHEET	ITEM	DESCRIPTION	REV BY:	DATE:
		REVISION DESCRIPTION: ADD A GROUND STUD TO ENCLOSURE AND UPDATE WIRING DETAILS	JH	3/20/15
2	1	EDIT CONNECTION DETAIL FOR GROUNDING CONDUCTOR		ECR: 16147
3	1	SHOW GROUNDING STUD ON ENCLOSURE LAYOUT.		

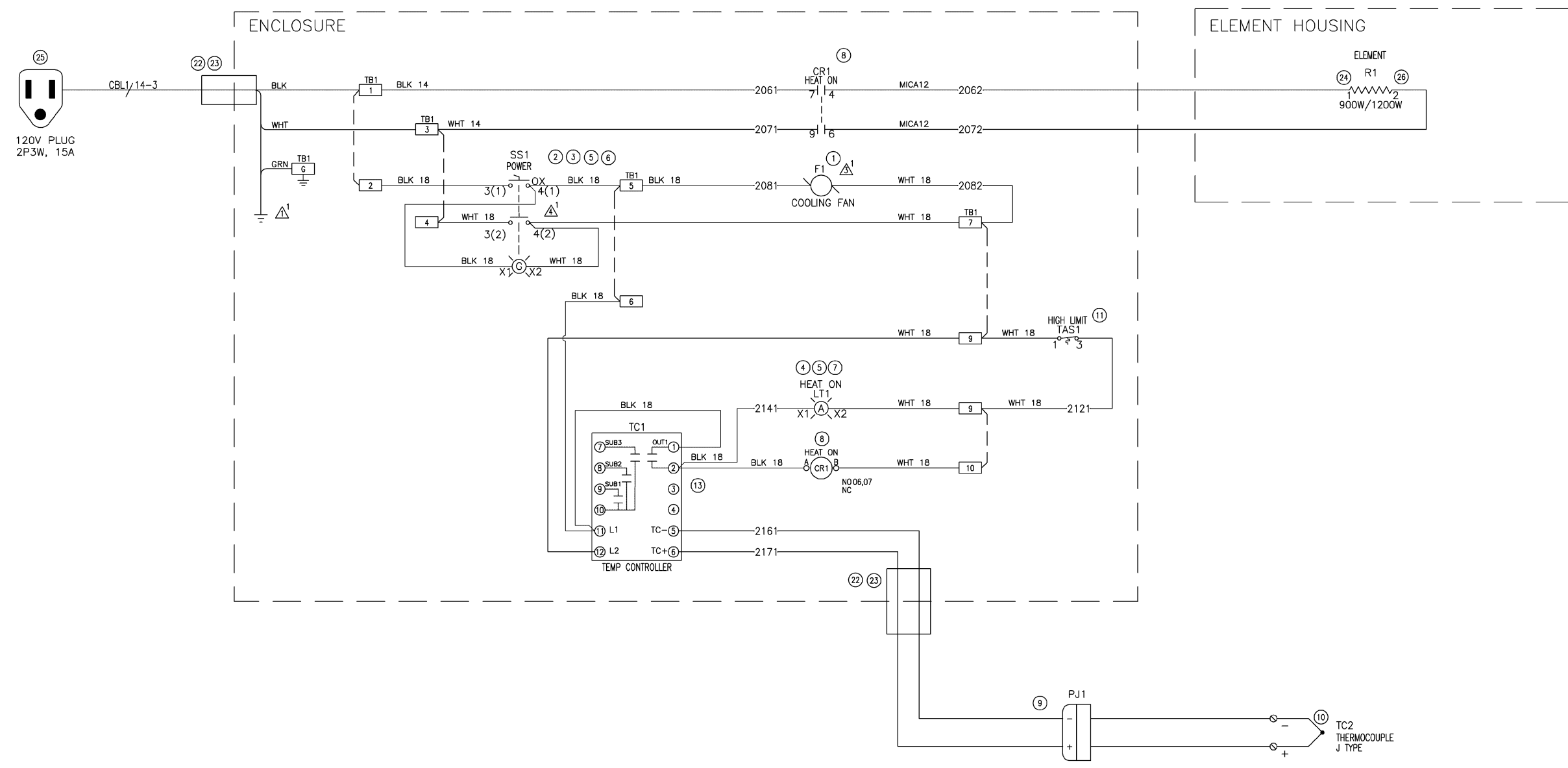
REVISION HISTORY: R2				
SHEET	ITEM	DESCRIPTION	REV BY:	DATE:
		REVISION DESCRIPTION: ADD HI18-1706-1 TO BOM, RESEQ PARTS TAGS, ADD TO FROM LIST	JH	4/14/15
1	1	UPDATED BOM, RESEQUENCED PARTS TAGS		ECR: 16171
1	2	ADD TO FROM LIST		

REVISION HISTORY: R3				
SHEET	ITEM	DESCRIPTION	REV BY:	DATE:
		REVISION DESCRIPTION: ADD HI18-1706-1 TO BOM, RESEQUENCED PARTS TAGS	JH	5/14/15
1	1	ADDED ACF-0004 TO BOM AND UPDATED ITEM NUMBERS		ECR: 16502
1	2	CHANGED HIGH LIMIT FROM 225 TO 130 DEG		
1	3	UPDATED WIRE AND TERMINAL BLOCK NUMBERS		
2	1	ADDED ACF-0004 COOLING FAN		
3	1	ADDED ACF-0004 COOLING FAN		

REVISION HISTORY: R4				
SHEET	ITEM	DESCRIPTION	REV BY:	DATE:
		REVISION DESCRIPTION: MOVED SWITCH FROM ELEMENT LOAD	JH	11/19/15
1	1	DELETED TO FROM LIST		ECR: 16551
2	1	MOVED POWER SWITCH FROM MAIN CIRCUIT		
3	1	UPDATED TERMINAL BLOCKS		

BELSHAW BROS., INC. SEATTLE, WASHINGTON				
TITLE: HI18/24 HAND ICER 120/60/1 COVER SHEET				
DRAWN:	JAH	SERIAL NO.:	XXX	DRAWING NO.:
APP'D.:	MJP	DATE:	01/22/15	HI18-1706
				1 OF 3
				REV 04

- 2 01
- 2 02
- 2 03
- 2 04
- 2 05
- 2 06
- 2 07
- 2 08
- 2 09
- 2 10
- 2 11
- 2 12
- 2 13
- 2 14
- 2 15
- 2 16
- 2 17
- 2 18
- 2 19
- 2 20
- 2 21
- 2 22
- 2 23
- 2 24
- 2 25
- 2 26
- 2 27



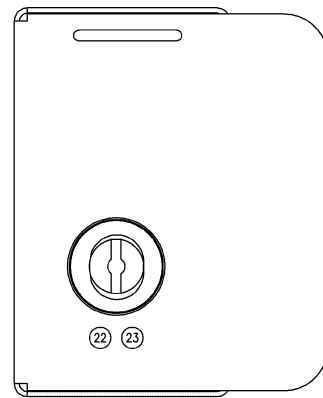
HI18 DATA TAG

VOLT	120
HERTZ	50/60
PHASE	1
AMPS	7.5
KILOWATTS	0.9

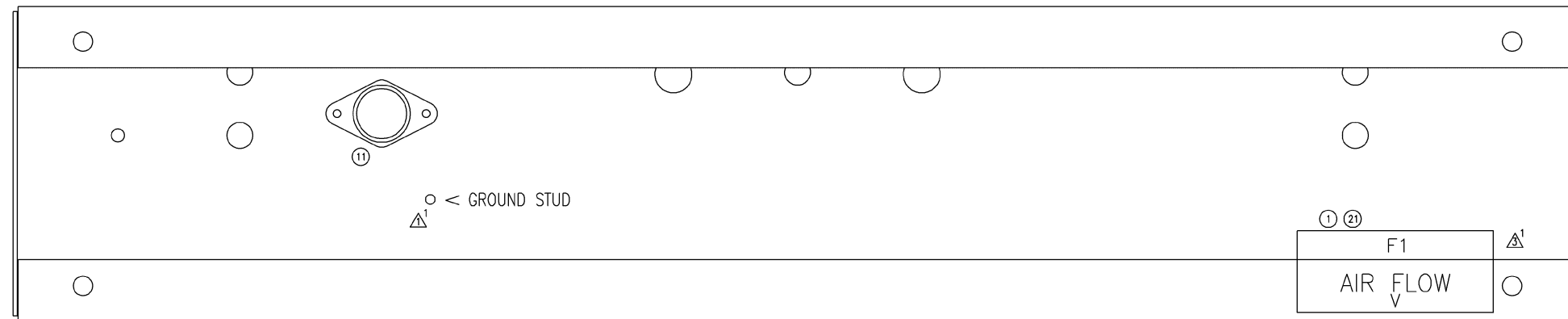
HI24 DATA TAG

VOLT	120
HERTZ	50/60
PHASE	1
AMPS	10
KILOWATTS	1.2

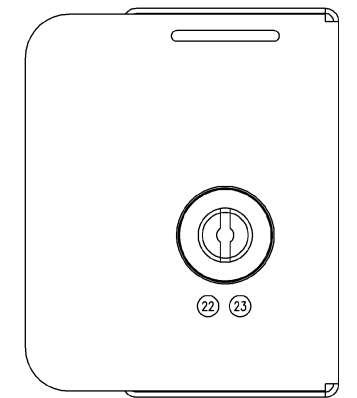
BELSHAW BROS., INC. SEATTLE, WASHINGTON			
TITLE: HI18/24 HAND ICER 120/60/1 SCHEMATIC			
DRAWN: JAH	SERIAL NO.: XXX	DRAWING NO.: HI18-1706	REV: 04
APP'D.: MJP	DATE: 01/22/15	2 OF 3	



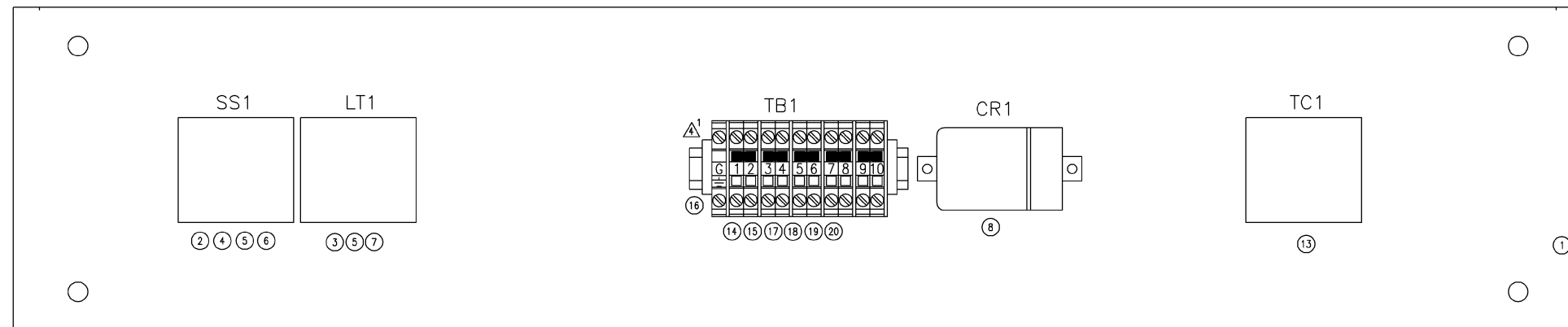
SWITCH BOX
(LEFT VIEW)



SWITCH BOX
(FRONT VIEW)



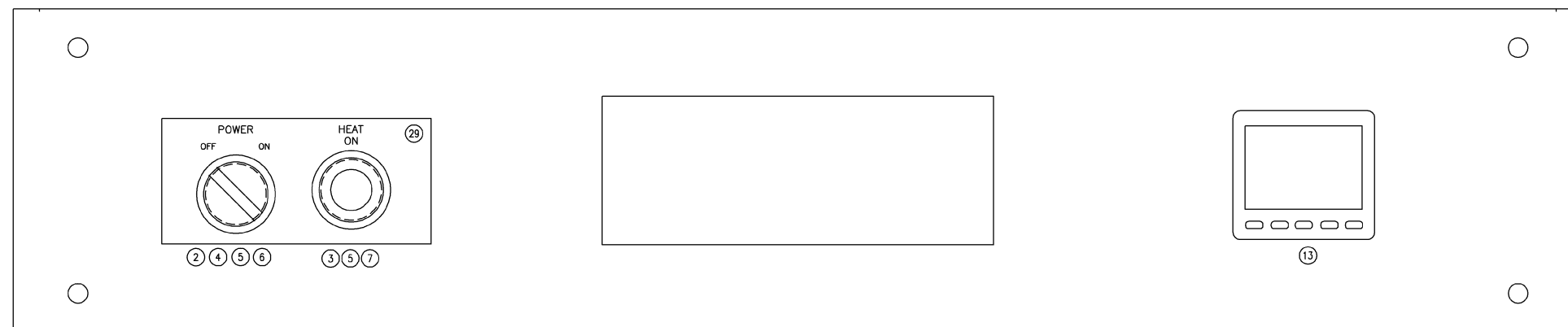
SWITCH BOX
(RIGHT VIEW)



SWITCH BOX COVER
(FRONT VIEW)



SWITCH BOX COVER
(LEFT VIEW)



SWITCH BOX COVER
(FRONT VIEW)

BELSHAW BROS., INC. SEATTLE, WASHINGTON			
TITLE: HI18/24 HAND ICER 120/60/1 PANEL LAYOUT			
DRAWN: JAH	SERIAL NO.: XXX	DRAWING NO.: HI18-1706	REV 04
APP'D.: MJP	DATE: 01/22/15	3 OF 3	