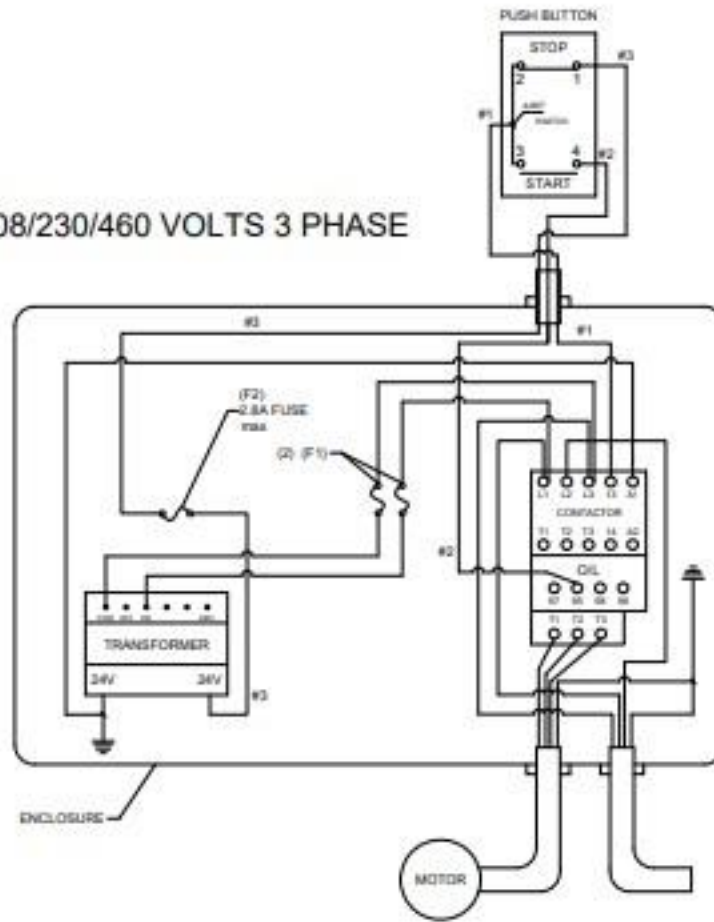


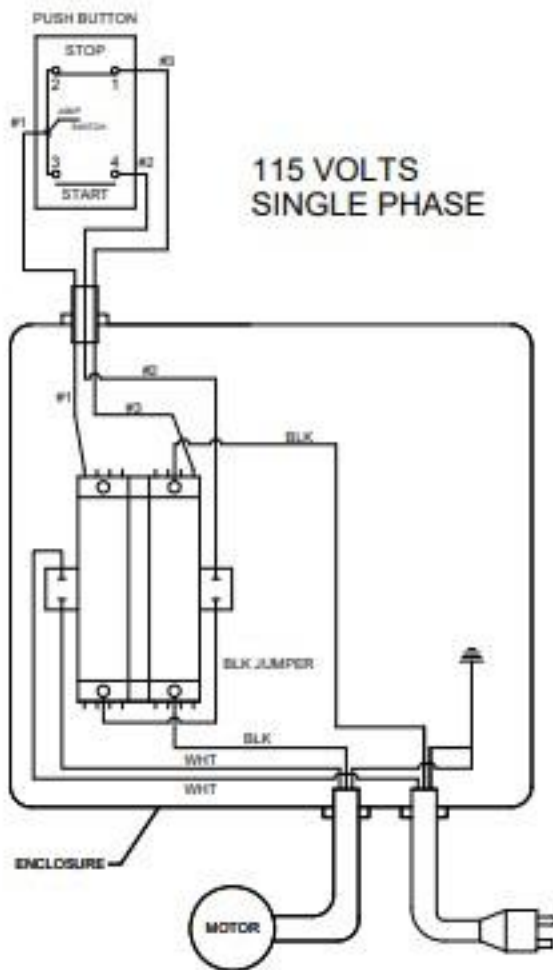
ELECTRICAL SCHEMATICS

THIS PAGE FOR USE BY QUALIFIED REPAIR TECHNICIANS ONLY

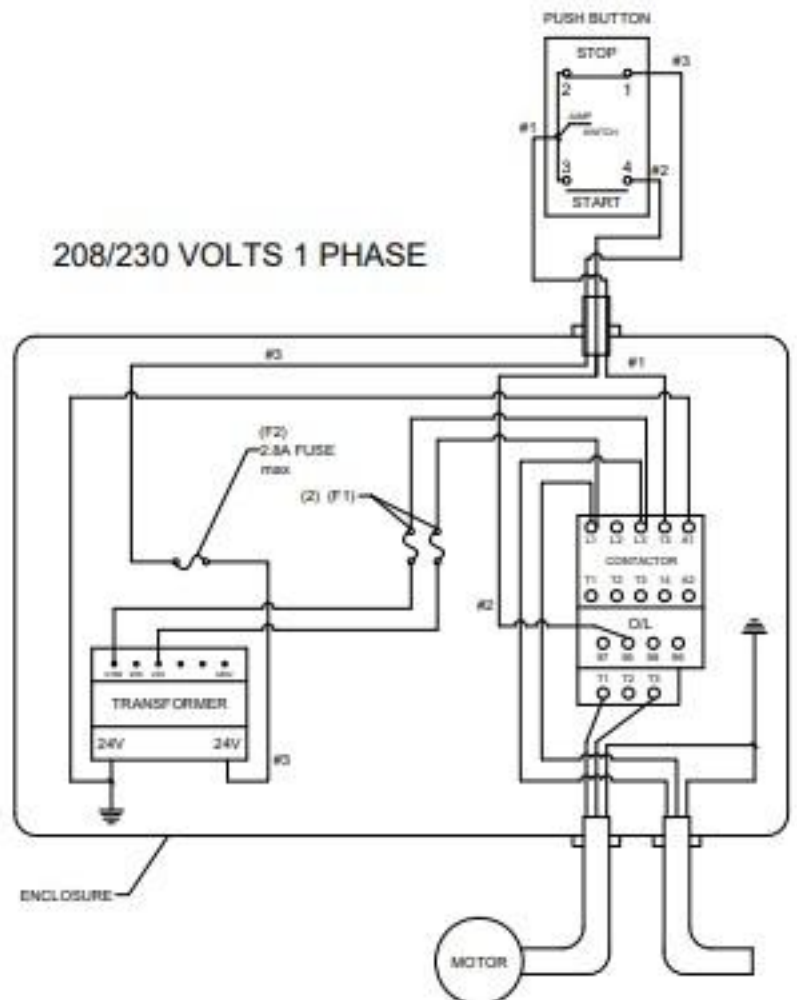
208/230/460 VOLTS 3 PHASE



115 VOLTS
SINGLE PHASE



208/230 VOLTS 1 PHASE



ELECTRICAL SCHEMATICS

THIS PAGE FOR USE BY QUALIFIED REPAIR TECHNICIANS ONLY

208/230/460 VOLTS 3 PHASE-50HZ

