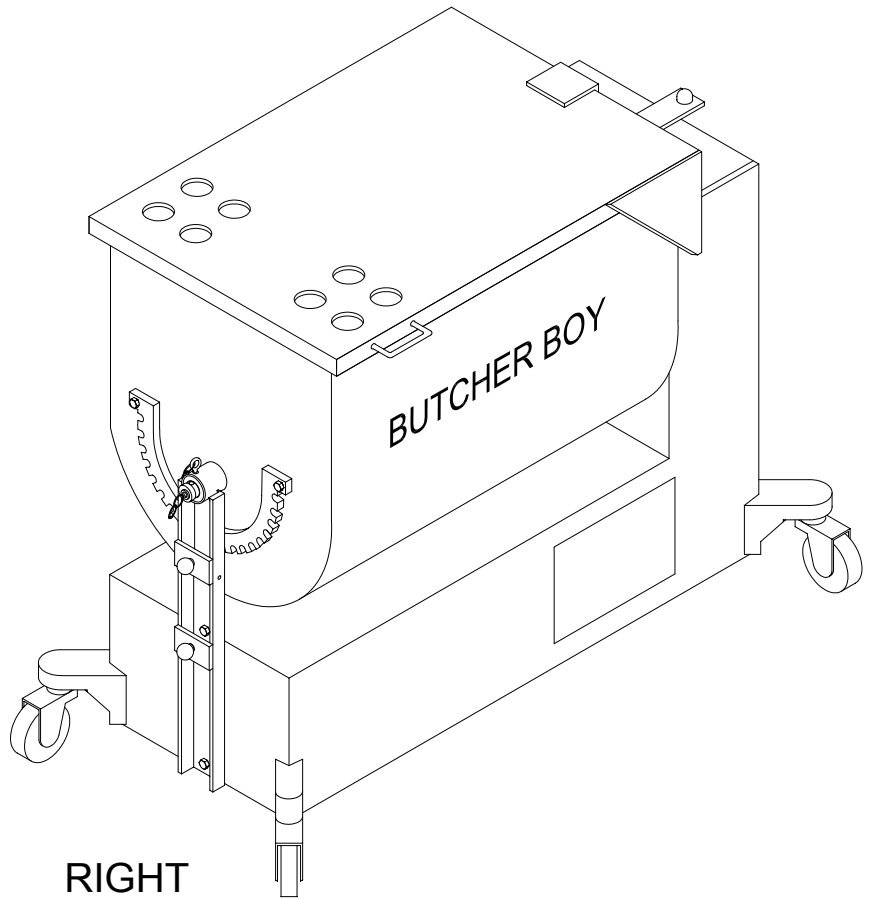


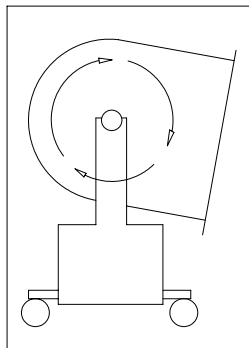
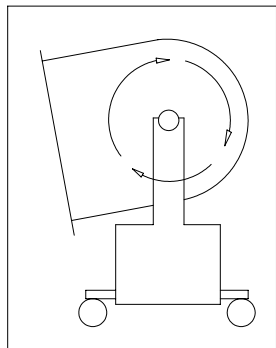
**B**<sup>®</sup>  
**U**  
**T**  
**C**  
**H**  
**E**  
**R**  
  
**B**  
**O**  
**Y**

**PARTS MAUAL FOR BUTCHER BOY  
MODELS SINGLE ACTION FLOOR MODEL  
150M S/N 3000-ON & 250M S/N 2000-ON  
(THAT WERE MANUFACTURED BY "LASAR MFG")**



**LEFT  
TILT**

**RIGHT  
TILT**



**®**

**American Meat Equipment Corp.**

1625 S. Greenwood Ave.

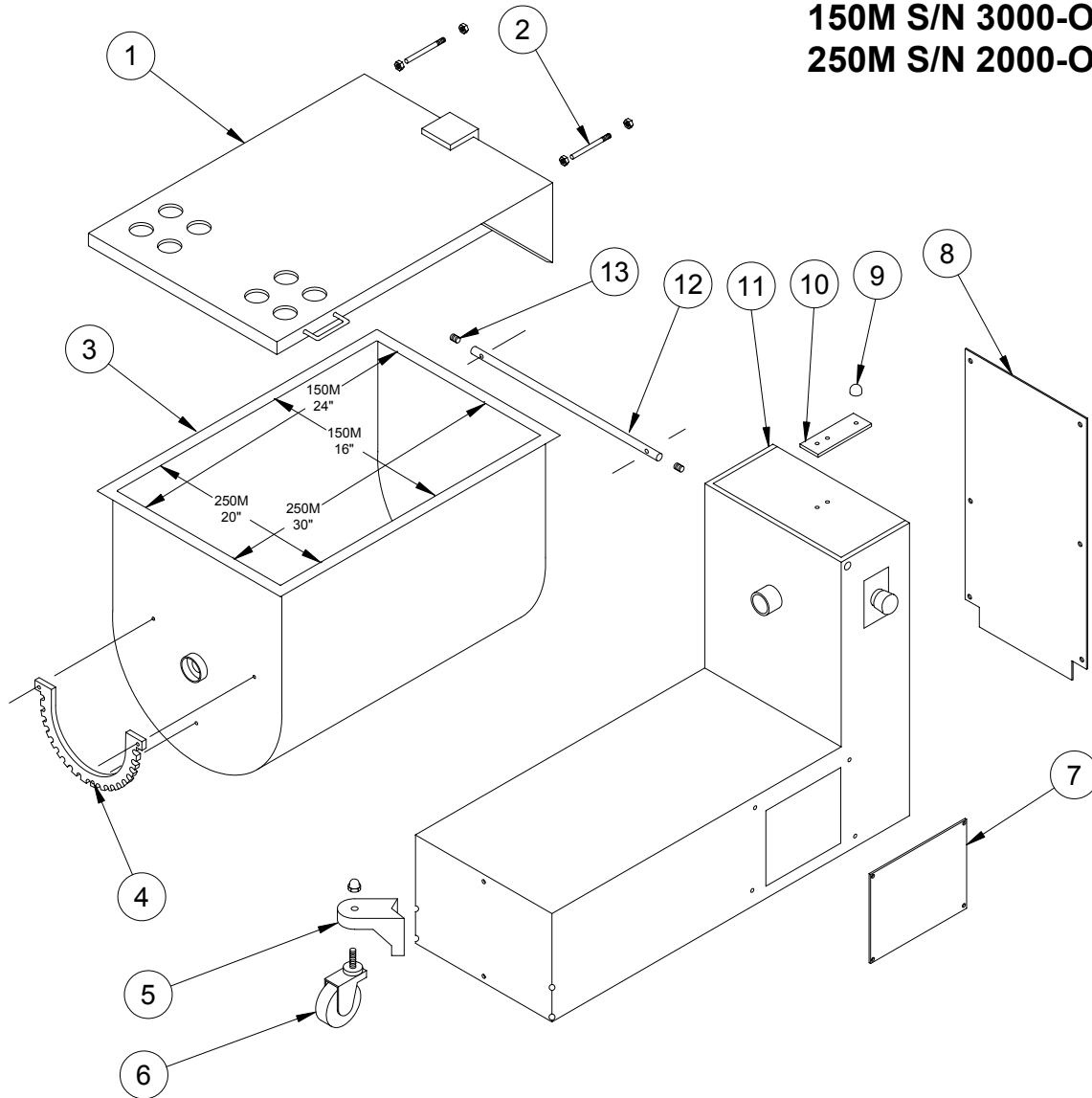
Montebello, Ca. 90640

Phone: (323) 724-5348

Fax: (323 ) 838-4336

# BUTCHER BOY 150M & 250M

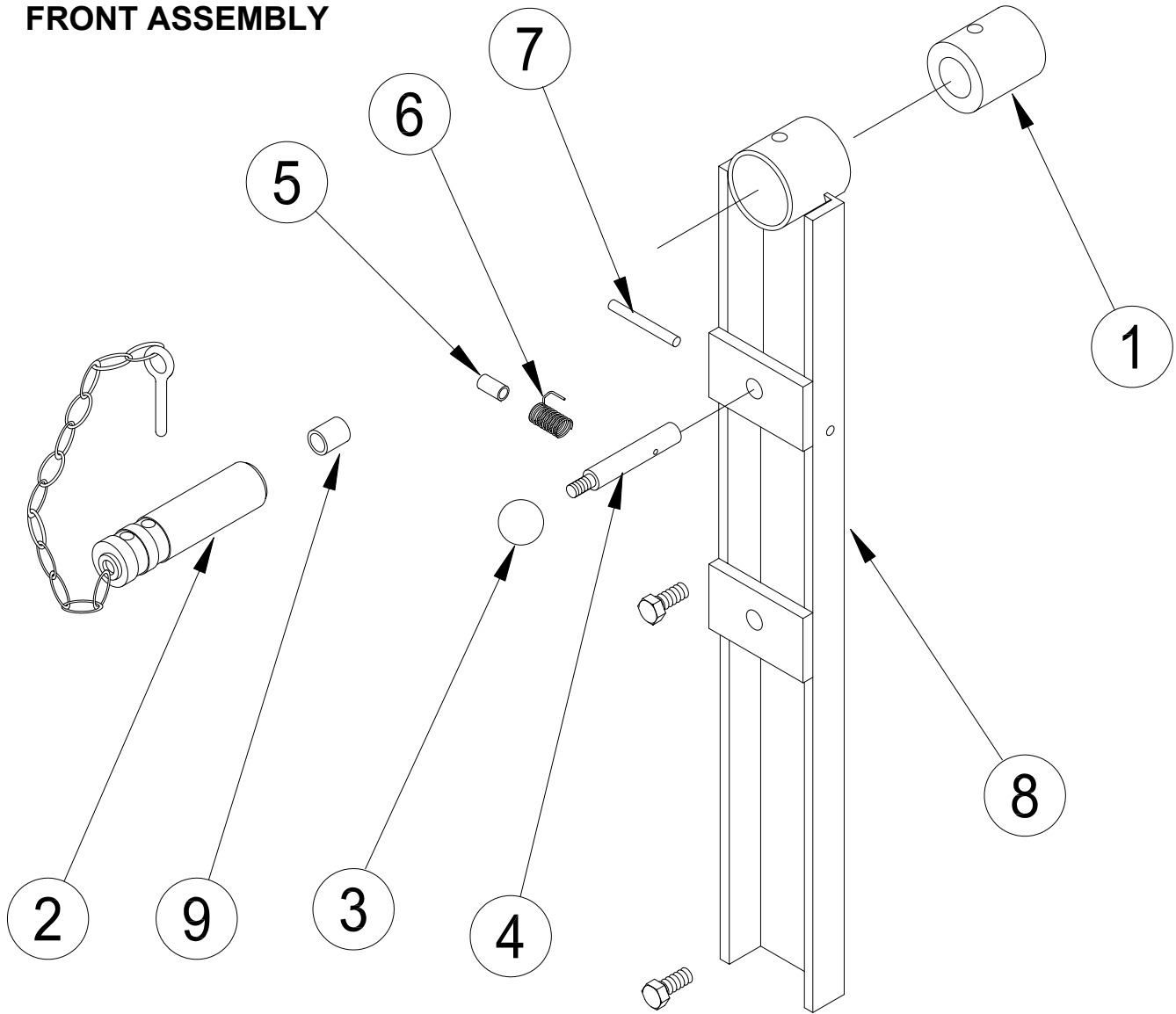
## BASE, TUB & LID UNIT 150M S/N 3000-ON 250M S/N 2000-ON



ITEM	PART#	DESCRIPTION	USE	ITEM	PART#	DESCRIPTION	USE
1	0015270	150M LID ASSY	1	8	0025280	S/S REAR COVER	1
1	0025246	250M LID ASSY	1	8	0015386	S/S REAR COVER	1
2	002660S	SS LID STUD	2	9	0090631	RUBBER BUMPER	1
3	0015370	150M TUB ASSY	1	10	0026266S	BUMPER BRACKET	1
3	0025330	250M TUB ASSY	1	11	0015391	150M CABINET	1
4	0026057	INDEX BRACKET	1	11	0025251	250M CABINET	1
5	0026134	CASTER BRACKET (ALUM)	4	12	0026223S	150M PIVOT ROD	1
5	0026134S	S/S CASTER	4	12	0025247S	250M PIVOT ROD	1
6	0090636	SWIVEL CASTER	4	13	SHSS-27-08-SS	SOC HD SET SCREW	2
7	0026255	SIDE PANEL	1				

# BUTCHER BOY 150M & 250M

## 150 & 250 MIXER FRONT ASSEMBLY

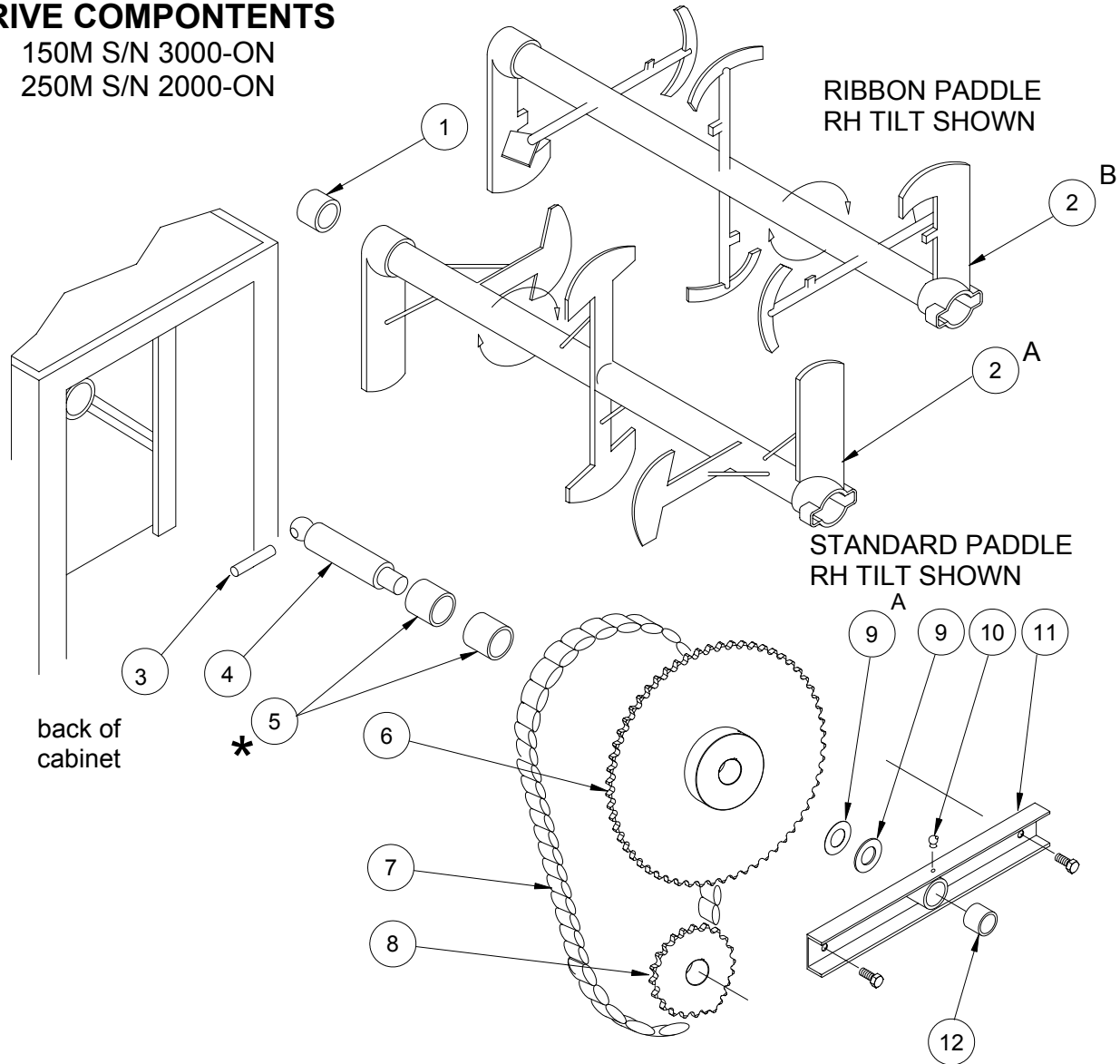


ITEM	PART#	DESCRIPTION	USE
1	00026525	BUSHING FRONT INSERT	1
2	0026549	SHAFT & PIN ASSEMBLY	1
3	0090638	KNOB	1
4	0026367S	TENSION PIN INDEX	1
5	0026268S	SPACER – SPRING	1
6	0026338	SPRING	1
7	0026265S	S/S PIN	1
8	0015344	150M FRONT SUPPORT W/ #1	1
8	0025316	250M FRONT SUPPORT W/ #1	1

# BUTCHER BOY 150M & 250M

## PADDLE ASSY & DRIVE COMPONENTS

150M S/N 3000-ON  
250M S/N 2000-ON



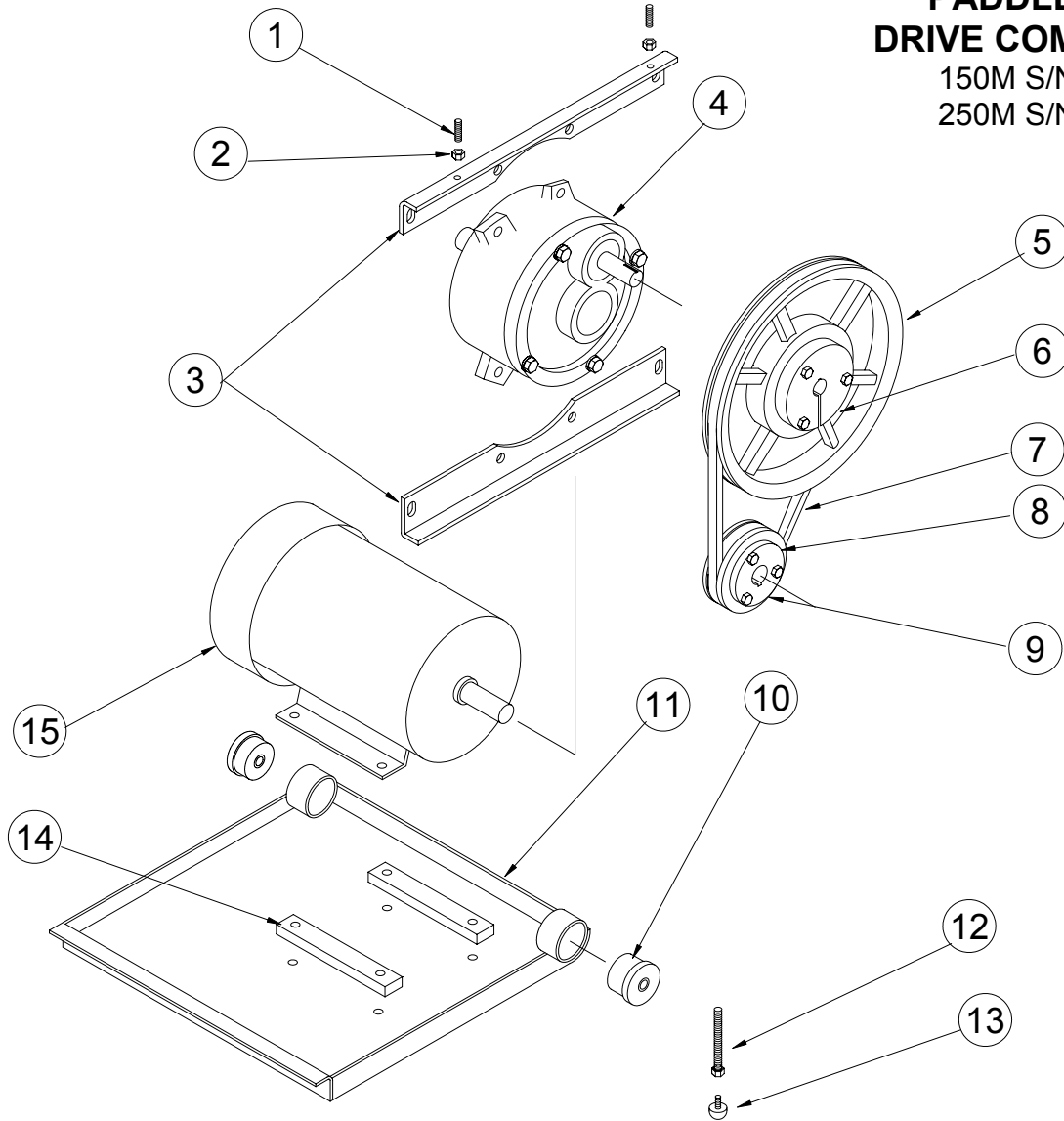
ITEM	PART#	DESCRIPTION	USE	ITEM	PART#	DESCRIPTION	USE
1	0026693	BUSHING PADDLE ASSY	1	6	0015360	150M DRIVEN SPROCKET	1
2A	0015470	150M PADDLES W/BUSH. (RH TILT)	1	6	0091038	250M DRIVEN SPROCKET	1
2A	0015471	150M PADDLES W/BUSH. (LH TILT)	1	7	0091124	150M CHAIN ASSEMBLY	1
2A	0025820	250M PADDLES W/BUSH. (RH TILT)	1	7	0091104	250M CHAIN ASSEMBLY	1
2A	0025821	250M PADDLES W/BUSH. (LH TILT)	1	8	0015417	DRIVE SPROCKET	1
2B	0015480	150M RIBBONS W/BUSH. (RH TILT)	1	8	0025230	DRIVE SPROCKET	1
2B	0015481	150M RIBBONS W/BUSH. (LH TILT)	1	9	0044662	SPACER	1
2B	0025830	250M RIBBONS W/BUSH. (RH TILT)	1	9A	0044521	SHIM (1/32 THICK) AS REQ	
2B	0025831	250M RIBBONS W/BUSH (LH TILT)	1	10	0090678	GREASE FITTING	1
3	0045048	DRIVE PIN	1	11	0015342S	150M DRIVE SUP. W/BUSH	1
4	0026464S	S/S DRIVE SHAFT	1	11	0025290S	250M DRIVE SUP. W/BUSH	1
*5	0090727	BUSHING (PLATED CAB ONLY)	2	12	0090718	BUSHING DRIVE SUP.	1
*5	0090736	BUSHING (S/S CAB ONLY)	2				

\* CHECK WITH MAGNET TO DETERMINE IF BASE IS S/S (S/S BASE IS NON-MAGNETIC)

# BUTCHER BOY 150M & 250M

## PADDLE ASSY & DRIVE COMPONENTS

150M S/N 3000-ON  
250M S/N 2000-ON



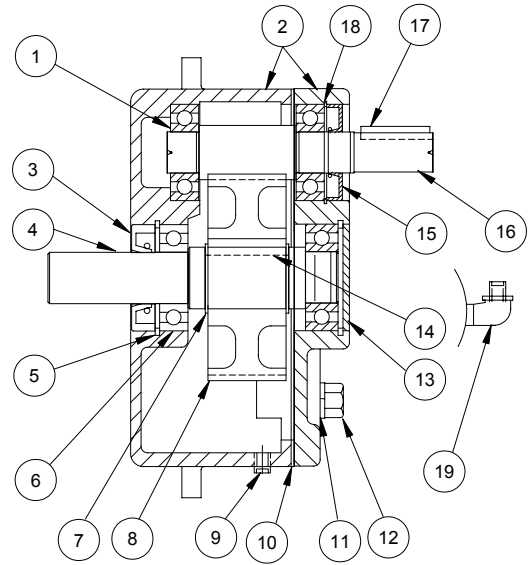
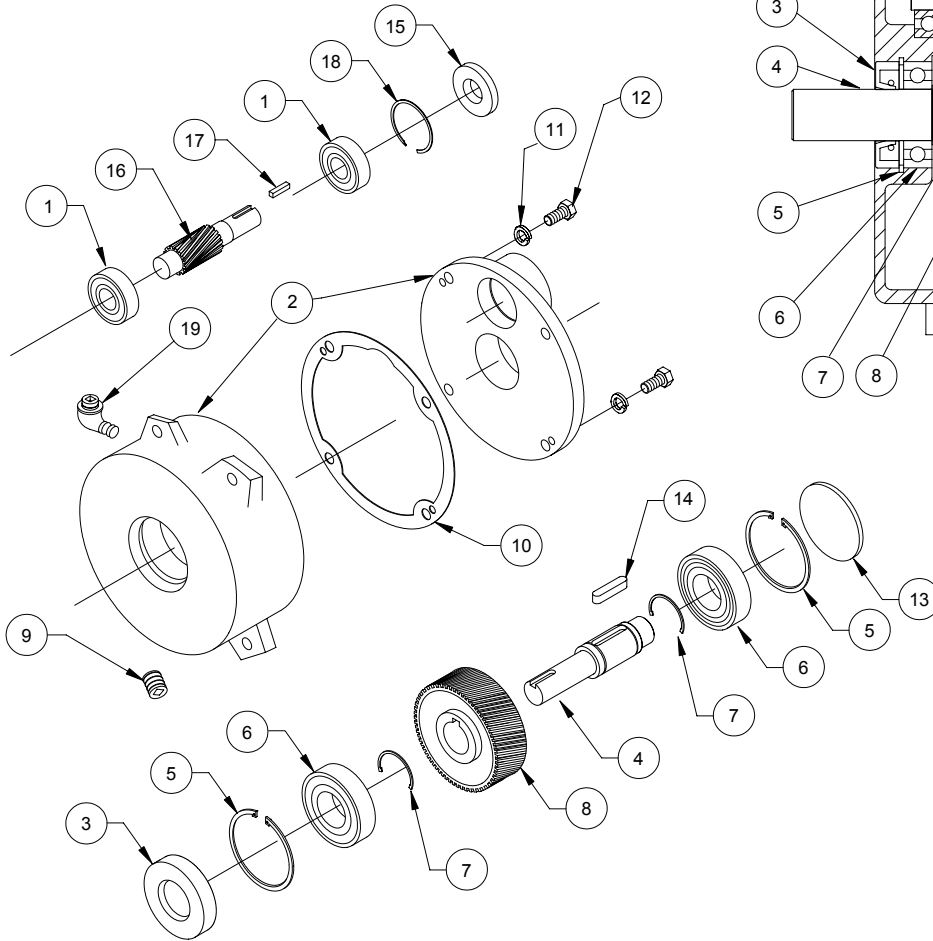
ITEM	PART#	DESCRIPTION	USE	ITEM	PART#	DESCRIPTION	USE
1	SSSH-19-20-SS	SCREW	2	9	0090148	150M HUB-DRIVEN PULLEY	1
2	HN-19-SS	NUT	2	9	0090176	250M HUB-DRIVEN PULLEY-184	1
3	0015251S	150M UPR. & LWR. G.B. SUPPORT	2	9	0090177	250M HUB-DRIVEN PULLEY-145T	1
3	0025245S	250M UPR. & LWR. G.B. SUPPORT	2	10	0010118	RUBBER MOTOR MOUNT	2
4	0015254	150M G.B. ASSY (SEE PARTS P.5)	1	11	0015237S	MOTOR PLATE	1
4	0025240	250M G.B. ASSY (SEE PARTS P.5)	1	11	0025262	MOTOR PLATE	1
5	0090146	150M DRIVEN PULLEY	1	12	0026262S	BELT TENSION SCREW	1
5	0090173	250M DRIVEN PULLEY	1	13	0090631	RUBBER BUMPER	1
6	0090147	HUB-DRIVEN PULLEY	1	14	0025879	MOTOR SPACE (145T FR)	2
7	0090504	150M BELT	1	15		150M-1HP MOTOR (SPECIFY VOLTS, PHASE & FR)	
7	0090515	250M BELT	1	15		250M-2HP MOTOR (SPECIFY VOLTS, PHASE & FR)	
8	0090145	150M DRIVE PULLEY	1				
8	0090175	250M DRIVE PULLEY	1				

# BUTCHER BOY 150M & 250M

## GEAR BOX ASSY

150M S/N 3000-ON - PART# 0015254

250M S/N 2000-ON - PART# 0025240

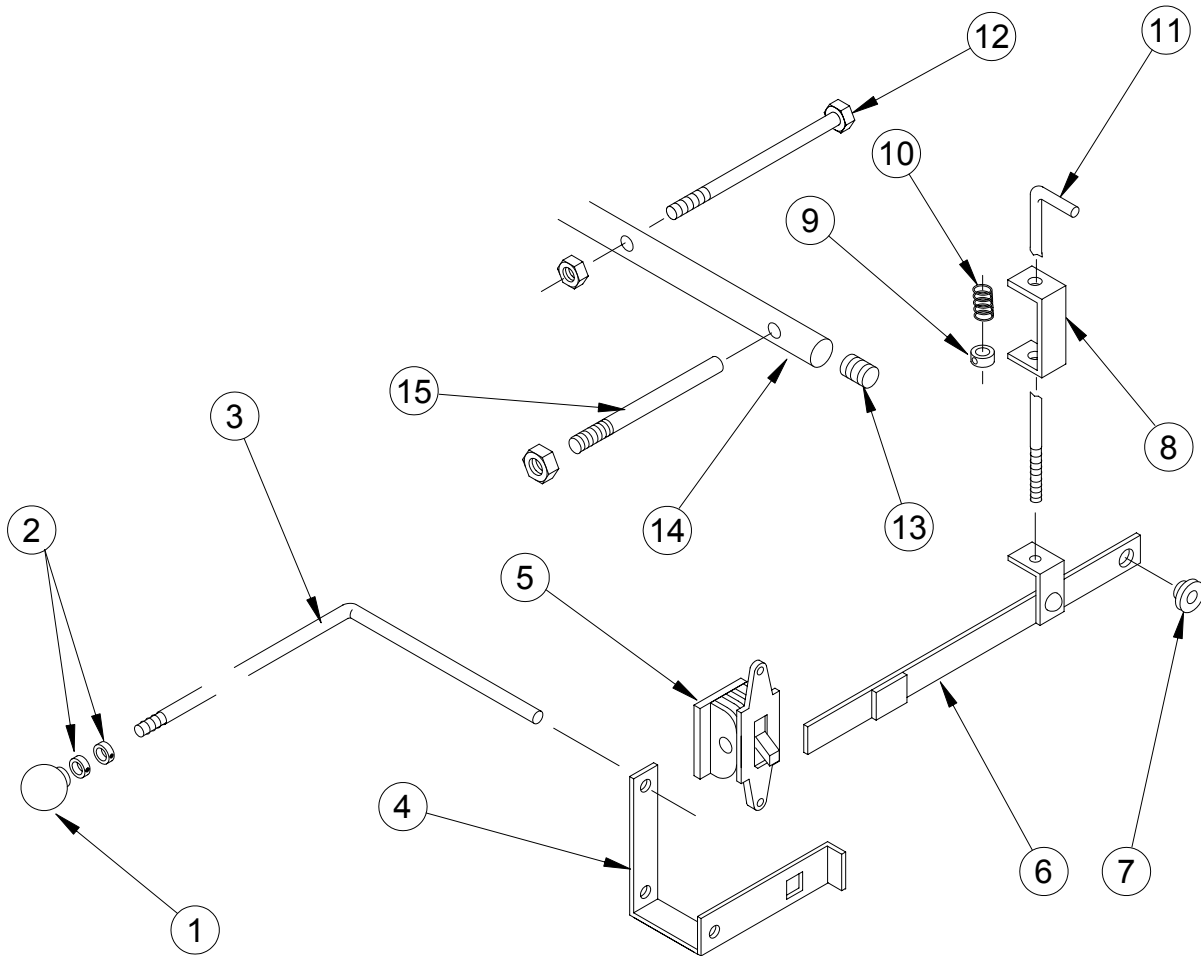


ITEM	PART#	DESCRIPTION	USE	ITEM	PART#	DESCRIPTION	USE
1	0090307	BALL BEARING 2		9	0090630	PLUG	2
2	0015252	150M HOUSING & COVER ASSY	1	10	0021004	GASKET	1
2	0025235	250M HOUSING & COVER ASSY	1	11	SLW-06-SS	WASHER	4
3	0090415	SEAL	1	12	HHCS-23-16-SS	SCREW	4
4	0015255	150M DRIVE SHAFT	1	13	0021007	PLUG	1
4	0025241	250M DRIVE SHAFT	1	14	0059248-4	KEY	1
5	0090204	RETAINING RING	2	15	0090410	SEAL	1
5	0090204	RETAING RING	2	16	0021005	150M PINION & GEAR	1
6	90302	BALL BEARING	2	16	0025239	250M PINION & GEAR	1
7	0090201	RETAING RING	2	17	0059246-6	KEY	1
8		150M GEAR WHEEL (SEE# 16)		18	0090221	RETAING RING	1
8		250M GEAR WHEEL (SEE# 16)		19	0090621	PIPE ELBOW	1

# BUTCHER BOY 150M & 250M

## ON - OFF SWITCH & MECHANICAL INTERLOCKING COMPONENTS

150M S/N 3000-ON  
250M S/N 2000-ON



ITEM	PART#	DESCRIPTION	USE	ITEM	PART#	DESCRIPTION	USE
1	0090638	KNOB	1	9	0090652S	COLLAR	1
2	0090606S	COLLAR	2	10	0026263S	SPRING	1
3	0015294S	150M SWITCH PULL ROD	1	11	0015312S	150M SAFETY LINK ASSY	1
3	0025249S	250M SWITCH PULL ROD	1	11	0025248S	250M SAFETY LINK ASSY	1
4	0026355S	SWITCH LEVER START/STOP	1	12	0015356S	150M THREADED ROD	1
5	0093020	SINGLE PHASE SWITCH	1	12	0025356S	250M THREADED ROD	1
5	0093021	THREE PHASE SWITCH	1	13	SHSS-27-12-SS	SET SCREW	2
6	0026350S	SWITCH LEVER FOR LID	1	14	0026223S	150M LID PIVOT ROD	1
7	0026363S	SPACER BUSHING	1	14	0025246S	250M LID PIVOT ROD	1
8	0026362S	SWITCH ROD BRACKET	1	15	0026260S	STUD	2