



## REPLACEMENT PARTS CATALOG

**M-95-3**

### WENDY'S CONVEYOR TOASTERS

**M-95-3 M953CCWD - 208V, 60HZ**

**M-95-3 M953ECWD - 240V, 60HZ**

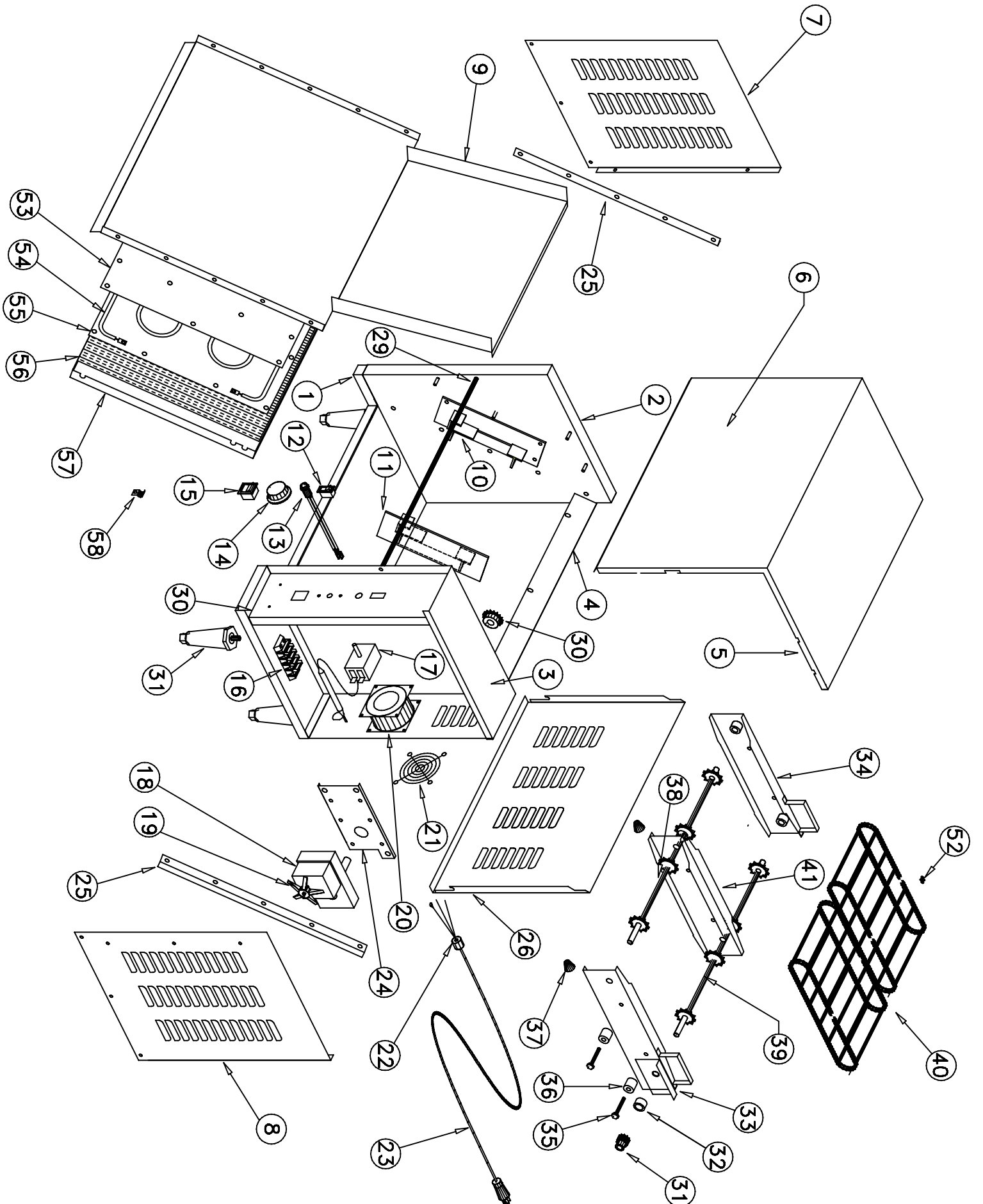
**M-95-3 M953FCWD - 240V, 50HZ**

**APW / Wyott**  
FOOD SERVICE EQUIPMENT CO.  
DALLAS, TX.75226

**WENDY'S M-95-3 CONVEYOR TOASTERS**

Part No. 67159 – Rev. 3/2000

<u>ITEM NO</u>	<u>STOCK NO</u>	<u>DESCRIPTION</u>	<u>ITEM NO</u>	<u>STOCK NO</u>	<u>DESCRIPTION</u>
1	84180	M95-3 BASE ASSEMBLY	32	85115	BUSHING DRIVE TEFLON
2	84115	LEFT INSIDE PANEL	33	84133	RIGHT CONVEYOR SIDE
3	84118	RIGHT INSIDE PANEL	34	84135	LEFT CONVEYOR SIDE
4	84192	M95-3 BACK BRACE	35	89000	BUSHING BOLT
5	84102	FRONT COVER	36	85228	BUSHING
6	84104	FRONT COVER LABEL	37	89165	KNOB BACK COVER
7	84149	LEFT SIDE PANEL	38	84536	LOWER CONVEYOR ROD
8	84146	RIGHT SIDE PANEL	39	84520	UPPER CONVEYOR ROD
9	84188	M95-3 GRILL PLATE	40	84530	CONVEYOR CHAIN
10	83065	LEFT HANGER BRACKET	41	84525	CONVEYOR DIVIDER
11	83061	RIGHT HANGER BRACKET	42	84523	ROD CHAIN ADJUSTMENT
12	89408	MOTOR SWITCH	43	85228	KNOB, HANGER
13	56530	INDICATOR LAMP	44	84548	RH ADJUSTER ROD
14	60352	KNOB FOR THERMOSTAT	45	84549	LH ADJUSTER ROD
15	89406	MAIN POWER SWITCH	46	84577	RH BRACKET
16	89145	TERMINAL BLOCK	47	84576	LH BRACKET
17	56527	THERMOSTAT	48	87145	SPROCKET
18	85178	2.0 RPM DRIVE MOTOR 115V	49	88702	THUMBSCREW
	85195	2.0 RPM DRIVE MOTOR 208-230V, 60HZ	50	88962	SPRING DISC
	85205	2.0 RPM DRIVE MOTOR 208-230V, 50HZ	51	84591	RING RETAINER
19	85209	FAN FOR DRIVE MOTOR	52	85136	CHAIN MASTER LINK
20	85280	COOLING FAN 115V,USES CORD 85285	53	84139	HEAT TRANSFER PLATE
	85281	COOLING FAN 208-230V	54	84198	HEATING ELEMENT 115V
21	85282	FAN GUARD		84199	HEATING ELEMENT 208V
22	89111	STRAIN RELIEF		84197	HEATING ELEMENT 220-240V
23	55310	POWER CORD 115V NEMA 5-15p	55	84168	HEATING ELEMENT CLAMP
	85640	POWER CORD 208-230V, NEMA 6-15P	56	84167	HEATING ELEMENT INSULATION
24	84151	DRIVE MOTOR MOUNT BRACKET	57	84141	HEATING ELEMENT COVER
25	84155	SIDE SUPPORT ANGLE	58	89120	THERMOSTAT BULB CLAMP
26	84187	M95-3 BACK PANEL			
27	84161	CONTROL PANEL			
28	87321	LEG (EA.)			
29	84178	M95-3 CROSS ROD			
30	NUMBER BELOW IN ( ) IS MATCHING CONV. GEAR SIZE				
	85042	DRIVE GEAR 13T (19)		83753	WIRE SET
	85037	DRIVE GEAR 16T (16)		89029	SCREW FOR BACK PANEL
	85183	DRIVE GEAR 17T (15)		88961	GREEN GROUND NUT
	85032	DRIVE GEAR 19T (13)		88993	10-32 X 3/8 SCREW
	85047	DRIVE GEAR 21T (11)		88994	10-32 X 3/16 SS SET SCREW
				89031	10-32 X 5/16 PHL SS SCREW
				89054	6-32 KEPS NUT
				89061	10-24 HEX NUT
				89071	10 FLAT WASHER
				89076	1/4 INT STAR WASHER
				89163	1/4-20 SS JAM NUT
				84165	CONTROL PANEL LABEL
				88923	8-32 X 1 SCREW
				89063	8-32 HEX NUT
				89140	CABLE TIE
				88894	1/4-20 X 7/8 PRESS STUD
31	NUMBER BELOW IN ( ) IS MATCHING DRIVE GEAR SIZE				
	85046	CONVEYOR GEAR 11T (21)			
	85033	CONVEYOR GEAR 13T (19)			
	85030	CONVEYOR GEAR 15T (17)			
	85038	CONVEYOR GEAR 16T (16)			
	85043	CONVEYOR GEAR 19T (13)			



# M-95 DRY WIRING DIAG.

AMERICAN PERMANENT WARE, INC.  
729 THIRD AVENUE  
DALLAS, TX. 75226

