

PARTS LIST
AX MODELS: YEAR 2016 - PRESENT (CODE# Z07xxxxxxx – PRESENT)

ITEM #	PART DESCRIPTION	USE DESCRIPTION	PART NUMBER
1	CABLE, CONTROL, 4-PIN, 50ft	CONNECTS A3/A6 CONTROL TO GENERATOR	5304-027
2	CABLE ADAPTOR, TEMP SENSOR	CONNECTS 2-PIN TEMP SENSOR CABLE TO 4-PIN PAL PCA JACK	5304-042
3	CABLE, MULTI-UNIT INTERCONNECT, 12ft	CONNECTS MASTER GENERATOR TO GANGED UNIT	5304-030
4	CABLE, PAL PCA – CHASSIS PCA	CONNECTS PAL PCA TO CHASSIS PCA, 7in	5304-022
5	CABLE, PAL PCA – ELEMENT PCA	CONNECTS PAL PCA TO ELEMENT RELAY PCA, 10in	5304-025
6	KIT, CABLE, ROUGH-IN	A3/A6 CONTROL AND ROOM SENSOR, 50ft	8855-136
7	CABLE, TEMP SENSOR, 25ft	CONNECTS ROOM SENSOR TO GENERATOR, 25ft	5331-10
8	CABLE, TEMP SENSOR, 50ft	CONNECTS ROOM SENSOR TO GENERATOR, 50ft	5331-11
9	CABLE, TEMP SENSOR, 100ft	CONNECTS ROOM SENSOR TO GENERATOR, 100ft	5331-15
10	COUPLER, EXTENSION FxF	CONNECTS TWO ROOM TEMP SENSOR CABLES	2311-14
11	CIRCUIT BREAKER, PANEL MOUNT	GENERATOR ELECTRICAL ASSY, 1A, 250V	3120-06
12	CLAMP, HOSE, SELF TIGHTENING	WATER INLET HOSE TO VALVE NIPPLE	1301-07
13	CLAMP, HOSE, WORM DRIVE	WATER INLET HOSE TO TANK FITTING	1301-06
14	CONTROL, PURE 2.0, TOUCHPAD	TIME/TEMPERATURE/LIGHTING CONTROL	9126-044
15	CONTROL, ELITE, TOUCH SCREEN	TIME/TEMPERATURE/LIGHTING CONTROL	9126-051
16	ELEMENT, WATER HEATING	TANK ASSEMBLY, INCLUDES GASKET	3003-*
17	GASKET, HEATING ELEMENT	STEAM GENERATION, TANK ASSEMBLY	2130-02
18	GASKET, TRIPLE LEVEL PROBE	TANK ASSEMBLY	2130-06
19	HOSE, WATER INLET	WATER INLET TO TANK	5050-12
20	INSULATION, BLANKET	TANK ASSEMBLY, 3 ELEMENT	2995-17
21	INSULATOR, STEAM HEAD	STEAM HEAD ASSY, COMFORTFLO STYLE, 1/2IN NPT	8034-17
22	LUG	GROUND, SCREW COMPRESSION	2199-01
23	PCA CIRCUIT BOARD, PAL	PRINTED CIRCUIT ASSEMBLY, POWER AND LEVEL	3229-012
24	PCA CIRCUIT BOARD, RELAY	PRINTED CIRCUIT ASSEMBLY, ELEMENT RELAY	3229-032
25	PCA, CHASSIS, PANEL MOUNT	PRINTED CIRCUIT ASSEMBLY, SENSOR/CONTROL JACK (OBSOLETE)	3229-020
26	PROBE, WATER LEVEL	TANK ASSEMBLY, TRIPLE PROBE	3190-04
27	SENSOR, TEMPERATURE, BLACK	ROOM SENSOR ASSEMBLY, 10K OHM	9302-02
28	SENSOR, TEMPERATURE, WHITE	ROOM SENSOR ASSEMBLY, 10K OHM	9302-026
29	SENSOR, TEMPERATURE, TANK	WARM START ASSEMBLY, 10K OHM w/ TANK CLIP	8855-139
30	TANK, 3 ELEMENT	STEAM GENERATOR ASSEMBLY	8100-26
31	TERMINAL BLOCK, 2-POS	ELECTRICAL ASSEMBLY, AX AUTODRAIN	2100-09
32	TERMINAL BLOCK, 9-POS	ELECTRICAL ASSEMBLY, POWER SUPPLY	2100-19
33	TERMINAL BLOCK, 10-POS	ELECTRICAL ASSEMBLY, OPTIONS	2100-10
34	TERMINAL BLOCK, JUMPER	ELECTRICAL ASSEMBLY, POWER SUPPLY, COPPER	2381-02
35	VALVE, DRAIN, AUTO	TANK ASSEMBLY, 3/4IN, COMPLETE	9210-205
36	VALVE, DRAIN, MANUAL	TANK ASSEMBLY, 3/4IN	2123-03
37	VALVE KIT, RELIEF & DRAIN, 3/4IN	TANK ASSEMBLY, PRESSURE RELIEF, MANUAL DRAIN	8813-0605
38	VALVE, PRESSURE RELIEF, 10 PSI	TANK ASSEMBLY, 3/4IN	2120-02
39	VALVE, WATER INLET, 3/8" NPT	TANK ASSEMBLY, 208/240V	3170-06

* Varies by model number, please refer to the IDENTIFICATION chart below.

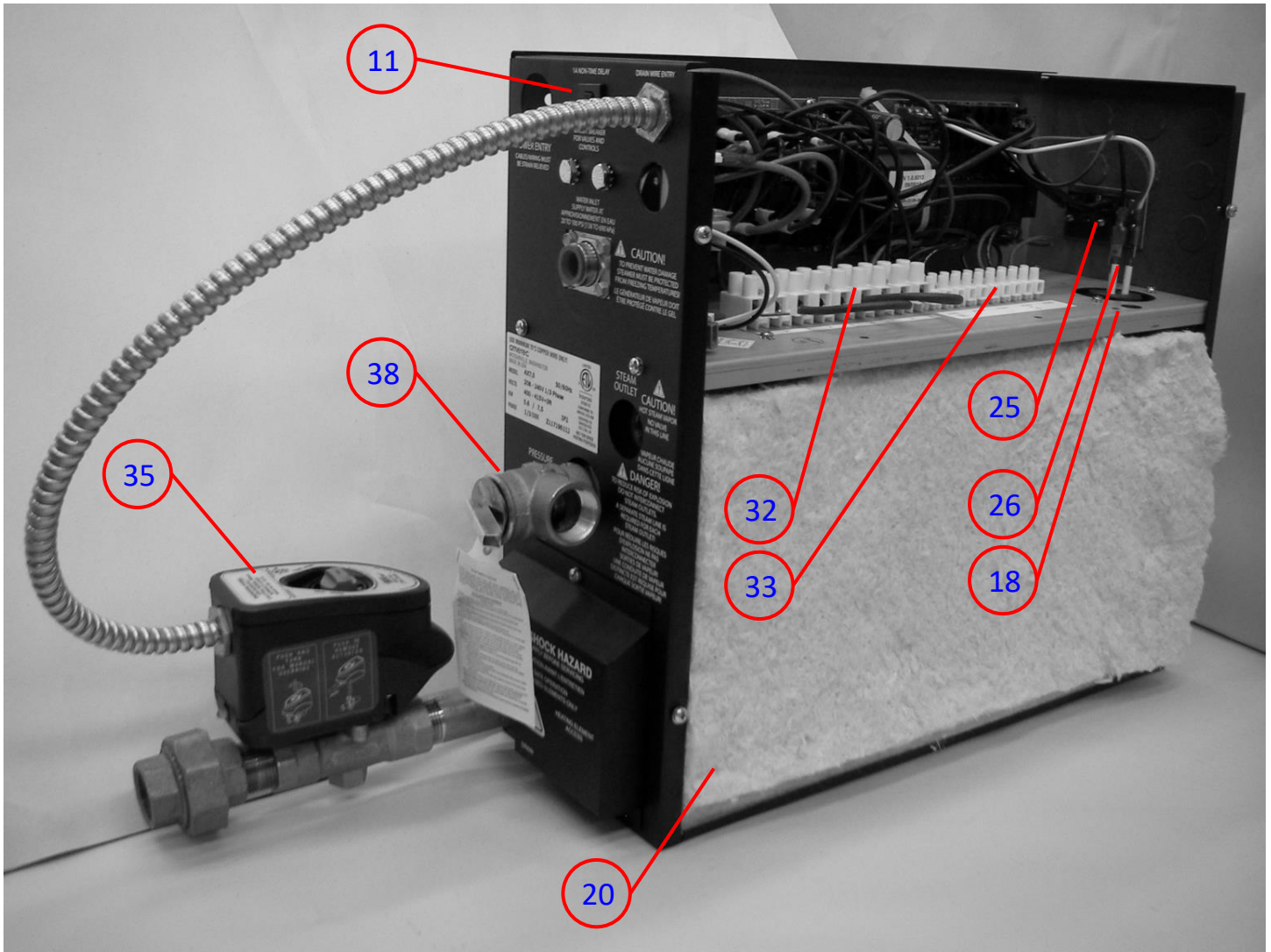
PARTS LIST
AX MODELS: YEAR 2016 - PRESENT (CODE# Z07xxxxxxx – PRESENT)

ITEM #	PART DESCRIPTION	USE DESCRIPTION	PART NUMBER
40	WIRE ASSY, BLACK 8.5"	ELECTRICAL ASSEMBLY, PCA POWER	5250-03
41	WIRE ASSY, BLACK W/ RED 8.5"	ELECTRICAL ASSEMBLY, PCA POWER	5250-04
42	WIRE ASSY, ORANGE 18"	ELECTRICAL ASSEMBLY, ELEMENT POWER	5653-03
43	WIRE ASSY, RED 17"	ELECTRICAL ASSEMBLY, ELEMENT POWER	5652-01
44	WIRE ASSY, BLUE 19"	ELECTRICAL ASSEMBLY, ELEMENT POWER	5654-01
45	WIRE ASSY, RED 5"	ELECTRICAL ASSEMBLY, TERMINAL JUMPER	5752-05

***HEATING ELEMENT IDENTIFICATION CHART**

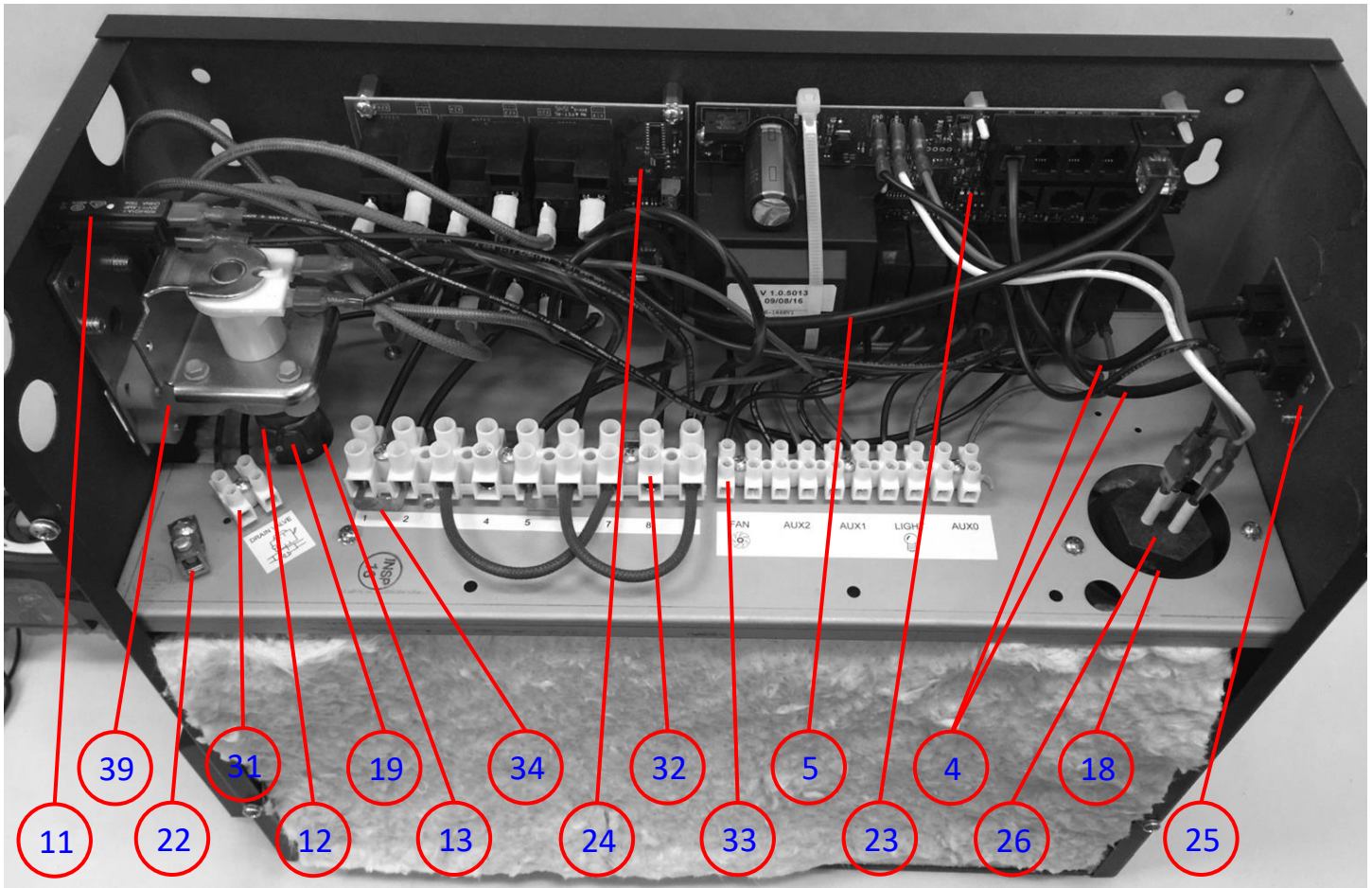
										KW / VOLTS
										14KW, 240V
										14KW, 208V
										11KW, 240V
										11KW, 208V
										7.5KW, 240V
										7.5KW, 208V
										4.5KW, 240V
										4.5KW, 208V
Item	QTY	QTY	QTY	QTY	QTY	QTY	QTY	QTY	Part #	Description
16							3		3003-001	ELEMENT, 1500W, 240V
								3	3003-01	ELEMENT, 2000W, 240V
					3				3003-02	ELEMENT, 2500W, 240V
			2			2			3003-03	ELEMENT, 3500W, 240V
	2	1		3					3003-10	ELEMENT, 5000W, 240V
						1			3003-11	ELEMENT, 3000W, 240V
	1		1						3003-12	ELEMENT, 4000W, 240V
		2							3003-25	ELEMENT, 5000W, 208V

PARTS LIST
AX MODELS: YEAR 2016 - PRESENT (CODE# Z07xxxxxxx – PRESENT)



ITEM #	PART DESCRIPTION	USE DESCRIPTION	PART NUMBER
11	CIRCUIT BREAKER, PANEL MOUNT	GENERATOR ELECTRICAL ASSY, 1A, 250V	3120-06
18	GASKET, TRIPLE LEVEL PROBE	TANK ASSEMBLY	2130-06
20	INSULATION, BLANKET	TANK ASSEMBLY, 3 ELEMENT	2995-17
25	PCA, CHASSIS, PANEL MOUNT	PRINTED CIRCUIT ASSEMBLY, SENSOR/CONTROL JACK (OBSOLETE)	3229-020
26	PROBE, WATER LEVEL	TANK ASSEMBLY, TRIPLE PROBE	3190-04
32	TERMINAL BLOCK, 9-POS	ELECTRICAL ASSEMBLY, POWER SUPPLY	2100-19
33	TERMINAL BLOCK, 10-POS	ELECTRICAL ASSEMBLY, OPTIONS	2100-10
35	VALVE, DRAIN, AUTO	TANK ASSEMBLY, 3/4IN, COMPLETE	9210-205
38	VALVE, PRESSURE RELIEF, 10 PSI	TANK ASSEMBLY, 3/4IN	2120-02

PARTS LIST
AX MODELS: YEAR 2016 - PRESENT (CODE# Z07xxxxxxx – PRESENT)



ITEM #	PART DESCRIPTION	USE DESCRIPTION	PART NUMBER
4	CABLE, PAL PCA – CHASSIS PCA	CONNECTS PAL PCA TO CHASSIS PCA, 7in (QTY. 2)	5304-022
5	CABLE, PAL PCA – ELEMENT PCA	CONNECTS PAL PCA TO ELEMENT RELAY PCA, 10in	5304-025
11	CIRCUIT BREAKER, PANEL MOUNT	GENERATOR ELECTRICAL ASSY, 1A, 250V	3120-06
12	CLAMP, HOSE, SELF TIGHTENING	WATER INLET HOSE TO VALVE NIPPLE	1301-07
13	CLAMP, HOSE, WORM DRIVE	WATER INLET HOSE TO TANK FITTING	1301-06
18	GASKET, TRIPLE LEVEL PROBE	TANK ASSEMBLY	2130-06
19	HOSE, WATER INLET	WATER INLET TO TANK	5050-12
22	LUG	GROUND, SCREW COMPRESSION	2199-01
23	PCA CIRCUIT BOARD, PAL	PRINTED CIRCUIT ASSEMBLY, POWER AND LEVEL	3229-012
24	PCA CIRCUIT BOARD, RELAY	PRINTED CIRCUIT ASSEMBLY, ELEMENT RELAY	3229-032
25	PCA, CHASSIS, PANEL MOUNT	PRINTED CIRCUIT ASSEMBLY, SENSOR/CONTROL JACK (OBSOLETE)	3229-020
26	PROBE, WATER LEVEL	TANK ASSEMBLY, TRIPLE PROBE	3190-04
31	TERMINAL BLOCK, 2-POS	ELECTRICAL ASSEMBLY, AX AUTODRAIN	2100-09
32	TERMINAL BLOCK, 9-POS	ELECTRICAL ASSEMBLY, POWER SUPPLY	2100-19
33	TERMINAL BLOCK, 10-POS	ELECTRICAL ASSEMBLY, OPTIONS	2100-10
34	TERMINAL BLOCK, JUMPER	ELECTRICAL ASSEMBLY, POWER SUPPLY, COPPER	2381-02
39	VALVE, WATER INLET, 3/8" NPT	TANK ASSEMBLY, 208/240V	3170-06

PARTS LIST
AX MODELS: YEAR 2016 - PRESENT (CODE# Z07xxxxxxx – PRESENT)



2



3



14



15



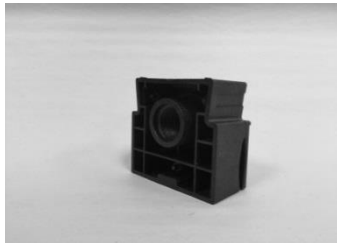
16



17



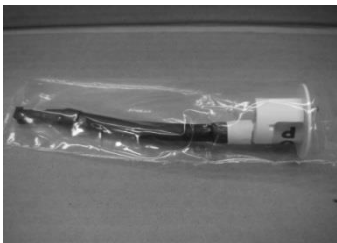
18



21



27



28



30



36

ITEM #	PART DESCRIPTION	USE DESCRIPTION	PART NUMBER
2	CABLE ADAPTOR, TEMP SENSOR	CONNECTS 2-PIN TEMP SENSOR CABLE TO 4-PIN PAL PCA JACK	5304-042
3	CABLE, MULTI-UNIT INTERCONNECT, 12ft	CONNECTS MASTER GENERATOR TO GANGED UNIT	5304-030
14	CONTROL, PURE 2.0, TOUCHPAD	TIME/TEMPERATURE/LIGHTING CONTROL	9126-044
15	CONTROL, ELITE, TOUCH SCREEN	TIME/TEMPERATURE/LIGHTING CONTROL	9126-051
16	ELEMENT, WATER HEATING	TANK ASSEMBLY, INCLUDES GASKET	3003-*
17	GASKET, HEATING ELEMENT	STEAM GENERATION, TANK ASSEMBLY	2130-02
18	GASKET, TRIPLE LEVEL PROBE	TANK ASSEMBLY	2130-06
21	INSULATOR, STEAM HEAD	STEAM HEAD ASSEMBLY, COMFORTFLO STYLE, 1/2IN NPT	8034-17
27	SENSOR, TEMPERATURE, BLACK	ROOM SENSOR ASSEMBLY, 10K OHM	9302-02
28	SENSOR, TEMPERATURE, WHITE	ROOM SENSOR ASSEMBLY, 10K OHM	9302-026

PARTS LIST

AX MODELS: YEAR 2016 - PRESENT (CODE# Z07xxxxxxx – PRESENT)

30	TANK, 3 ELEMENT	STEAM GENERATOR ASSEMBLY	8100-26
36	VALVE, DRAIN, MANUAL	TANK ASSEMBLY, 3/4IN	2123-03