

PARTS LIST  
**AK MODELS: YEARS 2017 - PRESENT (CODE# A01xxxxxxx - PRESENT)**

ITEM #	PART DESCRIPTION	USE DESCRIPTION	PART NUMBER
1	BRACKET	WALL CONTROL MOUNTING BRACKET	8227-02
2	CABLE, CONTROL, 25ft	CONNECTS KT60, K60 R30K TO GENERATOR, 25ft	5304-031
3	CABLE, CONTROL, 100ft	CONNECTS KT60, K60 R30K TO GENERATOR, 100ft	5304-061
4	CABLE, TEMP SENSOR, 25ft	CONNECTS ROOM SENSOR TO GENERATOR, 25ft	5331-10
5	CABLE, TEMP SENSOR, 50ft	CONNECTS ROOM SENSOR TO GENERATOR, 50ft	5331-11
6	CABLE COUPLER, FxF, SENSOR	CONNECTS TWO ROOM TEMP SENSOR CABLES	2311-14
7	CLAMP, HOSE, SELF TIGHTENING	WATER INLET HOSE TO VALVE NIPPLE	1301-07
8	CLAMP, HOSE, WORM DRIVE	WATER INLET HOSE TO TANK FITTING	1301-06
9	CONTROL, K60	K60 TIME, TEMP, ON/OFF CONTROL (SEPARATE ROOM TEMP SENSOR REQ.) (COVER PLATE NOT INCLUDED) WH=WHITE LETTERING GLD=GOLD LETTERING	WH = 9100-180
			GLD = 9100-190
10	CONTROL, KT60	KT60 TIME, TEMPERATURE, ON/OFF CONTROL (W/INTREGAL TEMP SENSOR) (COVER PLATE NOT INCLUDED) WH=WHITE LETTERING GLD=GOLD LETTERING	WH = 9110-180
			GLD = 9110-190
11	CONTROL, PCA - R30K	R30K , PCA AND TOUCHPAD ONLY (FITS ALL TRIM FINISHES)	3115-211
12	CONTROL, PCA - R30i	R30i , PCA AND TOUCHPAD ONLY (FITS ALL TRIM FINISHES)	3115-111
13	CONTROL, R30K, ASSY.	R30K CONTROL W/CHROME TRIM RING	9140-101
14	CONTROL, R30i, ASSY.	R30i CONTROL W/CHROME TRIM RING	9208-31
15	COVER PLATE, CONTROL K60/KT60	COVER PLATE FOR K60, KT60 CP=CHROME PB=BRASS, PN=POLISHED NICKEL BN=BRUSHED NICKEL, ORB=OIL RUBBED BRONZE	CP = 8037-03
			PB = 8037-04
			PN = 8037-07
			BN = 8037-08
16	COVER, TRIM RING R30i/R30K CONTROL	TRIM RING FOR R30K, R30I CONTROL CP=CHROME, PN=POLISHED NICKEL, BN=BRUSHED NICKEL, ORB=OIL RUBBED BRONZE	ORB = 8037-27
			CP = 8038-01
			WH =8038-04
			BN = 8038-06
17	ELEMENT, WATER HEATING	TANK ASSEMBLY, INCLUDES GASKET	3003-*
18	FILTER REPLACEMENT CARTRIDGES, ASX120	REPLACEMENT CARTRIDGE SET, ASX120 FILTER ASSY.	9209-042

\* Varies by model number, please refer to the IDENTIFICATION chart below.

PARTS LIST  
**AK MODELS: YEARS 2017 - PRESENT (CODE# A01xxxxxxx - PRESENT)**

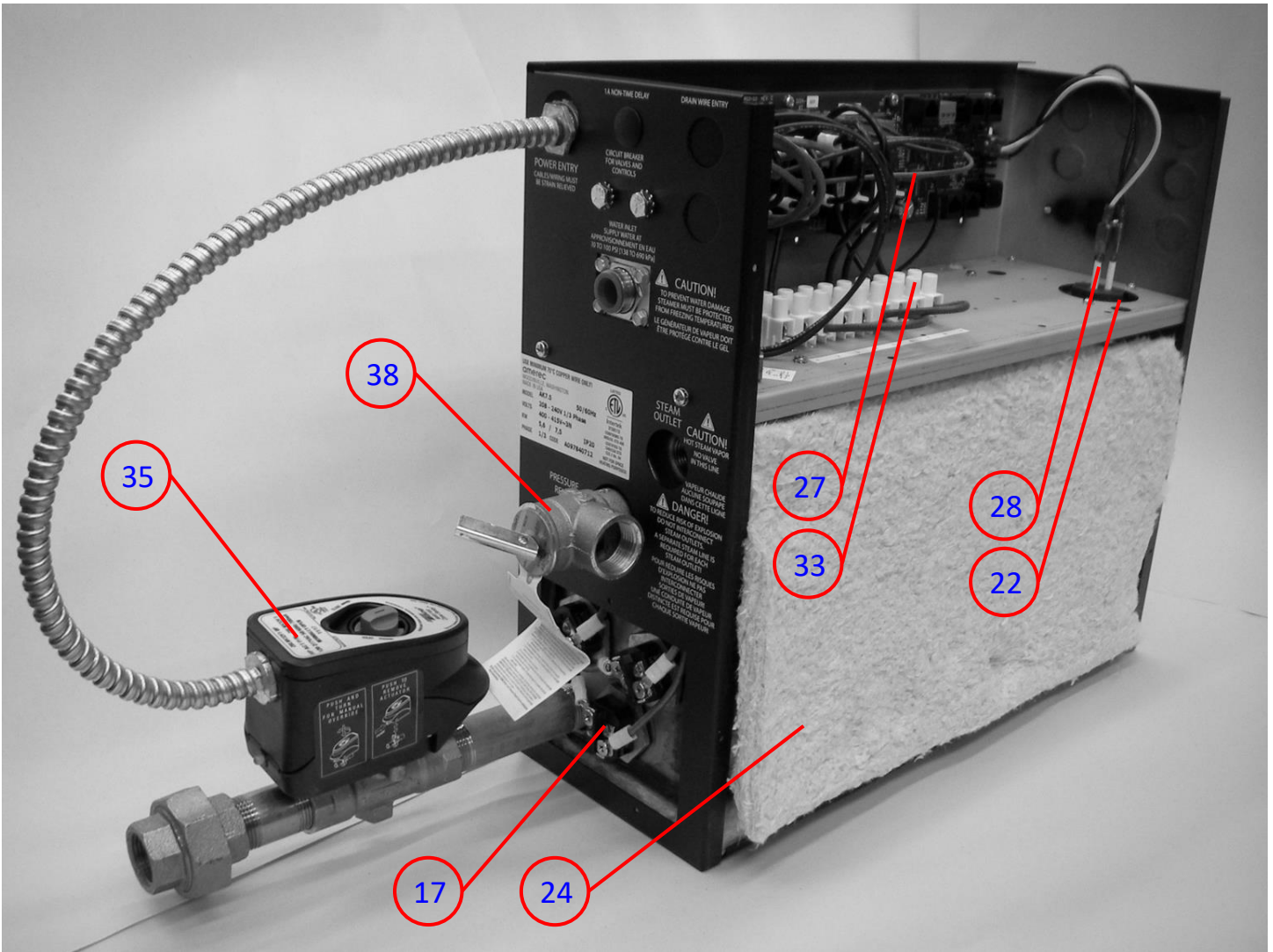
ITEM #	PART DESCRIPTION	USE DESCRIPTION	PART NUMBER
19	FUSE, 1AMP, FAST BLOW 5MM	AK GENERATOR PCA (BUILT AFTER 3/17)	3100-07
20	FUSE, 100MA, SLOW BLOW, 5MM	AK GENERATOR PCA (BUILT AFTER 3/17)	3100-11
21	GASKET, HEATING ELEMENT	STEAM GENERATION, TANK ASSEMBLY	2130-02
22	GASKET, TRIPLE LEVEL PROBE	TANK ASSEMBLY	2130-06
23	HOSE, WATER INLET	WATER INLET TO TANK	5050-12
24	INSULATION, BLANKET	TANK ASSEMBLY, 3 ELEMENT	2995-17
25	INSULATOR, STEAM HEAD	STEAM HEAD ASSEMBLY, COMFORTFLO STYLE, 1/2IN NPT	8034-17
26	LUG	GROUND, SCREW COMPRESSION	2199-01
27	PCA CIRCUIT BOARD, PAL	PRINTED CIRCUIT ASSEMBLY, POWER AND LEVEL	3224-032
28	PROBE, WATER LEVEL	TANK ASSEMBLY, TRIPLE PROBE	3190-04
29	SENSOR, TEMPERATURE, BLACK	ROOM SENSOR ASSEMBLY, 100K OHM	9302-01
30	SENSOR, TEMPERATURE, WHITE	ROOM SENSOR ASSEMBLY, 100K OHM	9302-016
31	TANK, 3 ELEMENT	STEAM GENERATOR ASSEMBLY	8100-26
32	TERMINAL BLOCK, 2-POS	ELECTRICAL ASSEMBLY, AK AUTODRAIN	2100-09
33	TERMINAL BLOCK, 9-POS	ELECTRICAL ASSEMBLY, POWER SUPPLY	2100-19
34	TERMINAL BLOCK, JUMPER	ELECTRICAL ASSEMBLY, POWER SUPPLY, COPPER	2381-02
35	VALVE, DRAIN, AUTO	TANK ASSEMBLY, 3/4IN, COMPLETE	9210-200
36	VALVE, DRAIN, MANUAL	TANK ASSEMBLY, 3/4IN	2123-03
37	VALVE KIT, RELIEF & DRAIN, 3/4IN	TANK ASSEMBLY, PRESSURE RELIEF, MANUAL DRAIN	8813-0605
38	VALVE, PRESSURE RELIEF, 10 PSI	TANK ASSEMBLY, 3/4IN	2120-02
39	VALVE, WATER INLET, 3/8" NPT	TANK ASSEMBLY, 208/240V	3170-06
40	WIRE ASSY, BLACK 8.5"	ELECTRICAL ASSEMBLY, PCA POWER	5250-03
41	WIRE ASSY, BLACK W/ RED 8.5"	ELECTRICAL ASSEMBLY, PCA POWER	5250-04
42	WIRE ASSY, ORANGE 18"	ELECTRICAL ASSEMBLY, ELEMENT POWER	5653-03
43	WIRE ASSY, RED 17"	ELECTRICAL ASSEMBLY, ELEMENT POWER	5652-01
44	WIRE ASSY, BLUE 19"	ELECTRICAL ASSEMBLY, ELEMENT POWER	5654-01
45	WIRE ASSY, RED 5"	ELECTRICAL ASSEMBLY, TERMINAL JUMPER	5752-05

PARTS LIST  
**AK MODELS: YEARS 2017 - PRESENT (CODE# A01xxxxxxx - PRESENT)**

**\*HEATING ELEMENT IDENTIFICATION CHART**

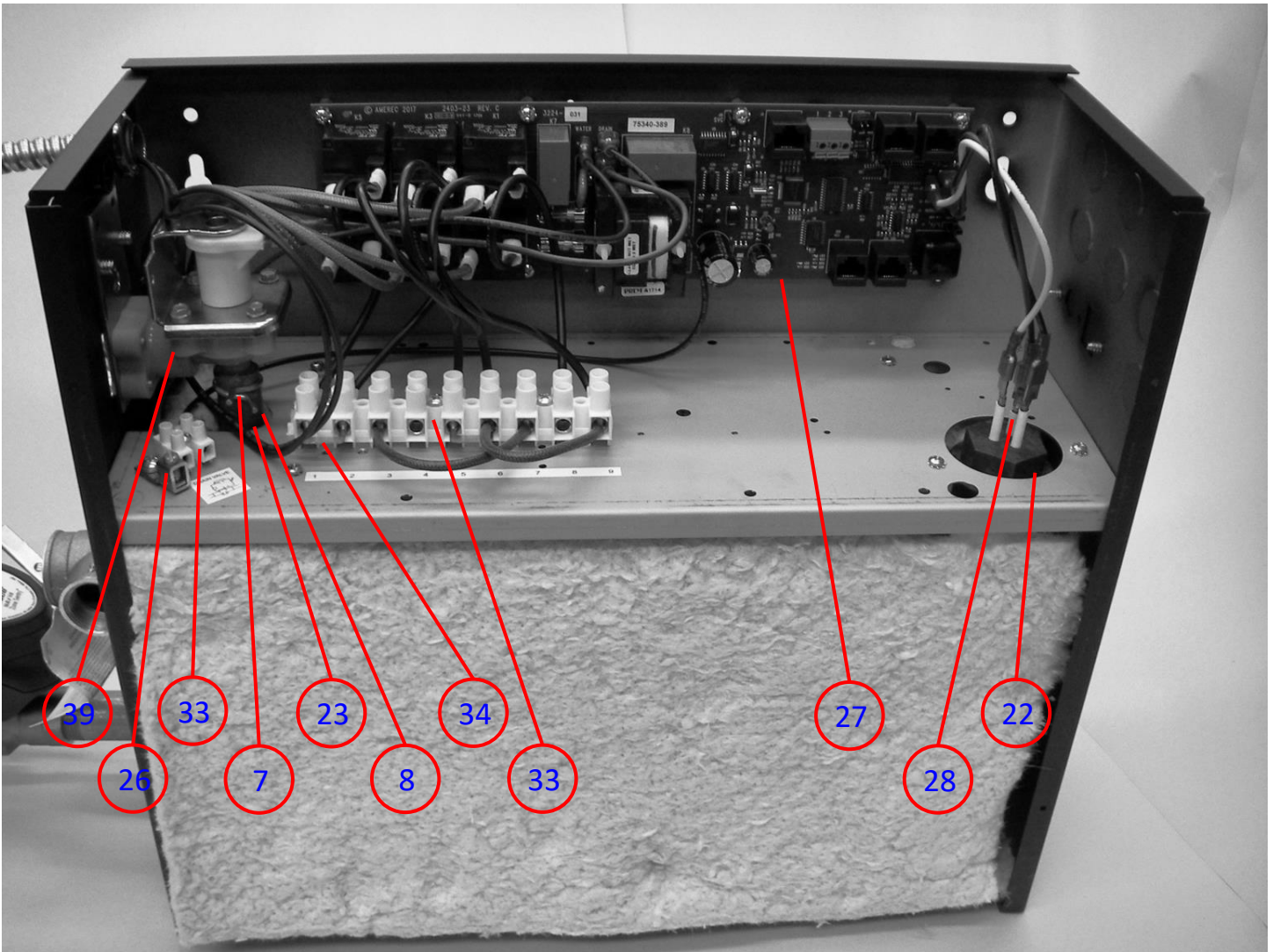
										KW / VOLTS	
										14KW, 240V	
										14KW, 208V	
										11KW, 240V	
										11KW, 208V	
										7.5KW, 240V	
										7.5KW, 208V	
										4.5KW, 240V	
										4.5KW, 208V	
Item	QTY	QTY	QTY	QTY	QTY	QTY	QTY	QTY	Part #	Description	
<b>17</b>							3		3003-001	ELEMENT, 1500W, 240V	
							3		3003-01	ELEMENT, 2000W, 240V	
					3				3003-02	ELEMENT, 2500W, 240V	
			2			2			3003-03	ELEMENT, 3500W, 240V	
	2	1		3					3003-10	ELEMENT, 5000W, 240V	
						1			3003-11	ELEMENT, 3000W, 240V	
	1		1						3003-12	ELEMENT, 4000W, 240V	
		2							3003-25	ELEMENT, 5000W, 208V	

PARTS LIST  
**AK MODELS: YEARS 2017 - PRESENT (CODE# A01xxxxxxx - PRESENT)**



ITEM #	PART DESCRIPTION	USE DESCRIPTION	PART NUMBER
17	ELEMENT, WATER HEATING	TANK ASSEMBLY, INCLUDES GASKET	3003-*
22	GASKET, TRIPLE LEVEL PROBE	TANK ASSEMBLY	2130-06
24	INSULATION, BLANKET	TANK ASSEMBLY, 3 ELEMENT	2995-17
27	PCA CIRCUIT BOARD, PAL	PRINTED CIRCUIT ASSEMBLY, POWER AND LEVEL	3224-032
28	PROBE, WATER LEVEL	TANK ASSEMBLY, TRIPLE PROBE	3190-04
33	TERMINAL BLOCK, 9-POS	ELECTRICAL ASSEMBLY, POWER SUPPLY	2100-19
35	VALVE, DRAIN, AUTO	TANK ASSEMBLY, 3/4IN, COMPLETE	9210-200
38	VALVE, PRESSURE RELIEF, 10 PSI	TANK ASSEMBLY, 3/4IN	2120-02

PARTS LIST  
**AK MODELS: YEARS 2017 - PRESENT (CODE# A01xxxxxxx - PRESENT)**

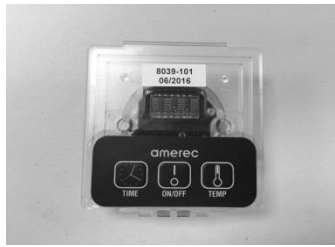


ITEM #	PART DESCRIPTION	USE DESCRIPTION	PART NUMBER
7	CLAMP, HOSE, SELF TIGHTENING	WATER INLET HOSE TO VALVE NIPPLE	1301-07
8	CLAMP, HOSE, WORM DRIVE	WATER INLET HOSE TO TANK FITTING	1301-06
22	GASKET, TRIPLE LEVEL PROBE	TANK ASSEMBLY	2130-06
23	HOSE, WATER INLET	WATER INLET TO TANK	5050-12
26	LUG	GROUND, SCREW COMPRESSION	2199-01
27	PCA CIRCUIT BOARD, PAL	PRINTED CIRCUIT ASSEMBLY, POWER AND LEVEL	3224-032
28	PROBE, WATER LEVEL	TANK ASSEMBLY, TRIPLE PROBE	3190-04
32	TERMINAL BLOCK, 2-POS	ELECTRICAL ASSEMBLY, AX AUTODRAIN	2100-09
33	TERMINAL BLOCK, 9-POS	ELECTRICAL ASSEMBLY, POWER SUPPLY	2100-19
34	TERMINAL BLOCK, JUMPER	ELECTRICAL ASSEMBLY, POWER SUPPLY, COPPER	2381-02
39	VALVE, WATER INLET, 3/8" NPT	TANK ASSEMBLY, 208/240V	3170-06

PARTS LIST  
AK MODELS: YEARS 2017 - PRESENT (CODE# A01xxxxxxx - PRESENT)



2



9



10



17



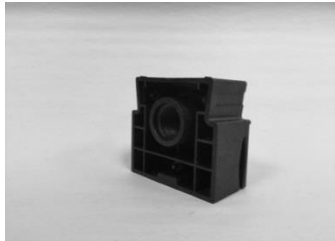
18



21



22



25



29



30



31



36

ITEM #	PART DESCRIPTION	USE DESCRIPTION	PART NUMBER
2	CABLE, CONTROL and MULTI-UNIT INTERCONNECT, 25ft	CONNECTS WALL CONTROL TO GENERATOR or MASTER GENERATOR TO GANGED UNIT	5304-031
9	K60 (REQUIRES SEPARATE SENSOR)	TIME/TEMPERATURE CONTROL	9100-XXX
10	KT60 (w/INTREGAL TEMP SENSOR)	TIME/TEMPERATURE CONTROL	9110-XXX
17	ELEMENT, WATER HEATING	TANK ASSEMBLY, INCLUDES GASKET	3003-*
18	FILTER REPLACEMENT CARTRIDGES, ASX120	REPLACEMENT CARTRIDGE SET, ASX120 FILTER ASSY.	9209-042
21	GASKET, HEATING ELEMENT	STEAM GENERATION, TANK ASSEMBLY	2130-02
22	GASKET, TRIPLE LEVEL PROBE	TANK ASSEMBLY	2130-06
25	INSULATOR, STEAM HEAD	STEAM HEAD ASSEMBLY, COMFORTFLO STYLE, 1/2IN NPT	8034-17
29	SENSOR, TEMPERATURE, BLACK	ROOM SENSOR ASSEMBLY, 10K OHM	9302-01
30	SENSOR, TEMPERATURE, WHITE	ROOM SENSOR ASSEMBLY, 10K OHM	9302-016
31	TANK, 3 ELEMENT	STEAM GENERATOR ASSEMBLY	8100-26
36	VALVE, DRAIN, MANUAL	TANK ASSEMBLY, 3/4IN	2123-03

PARTS LIST

**AK MODELS:** YEARS 2017 - PRESENT (CODE# A01xxxxxxx - PRESENT)