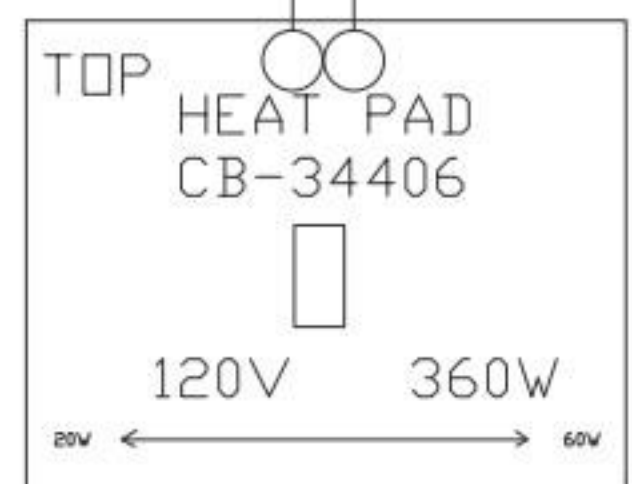
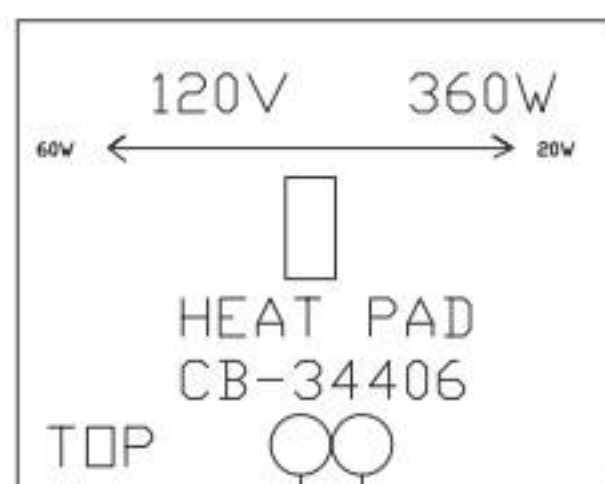
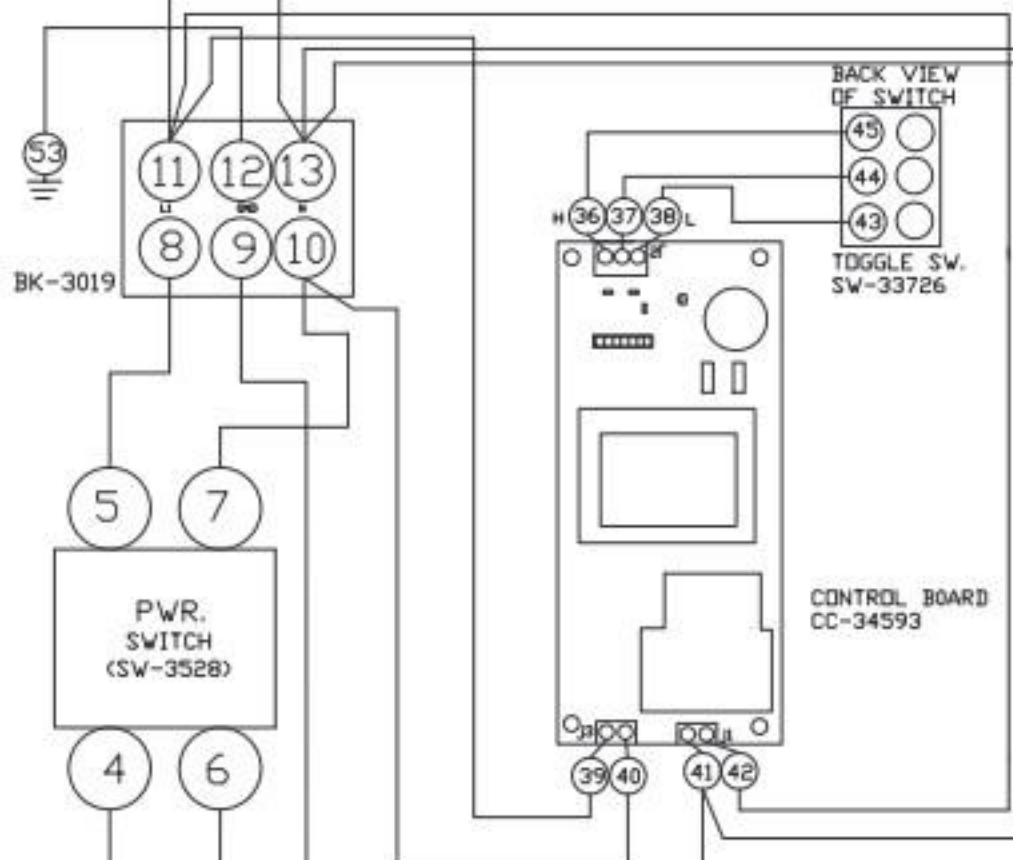
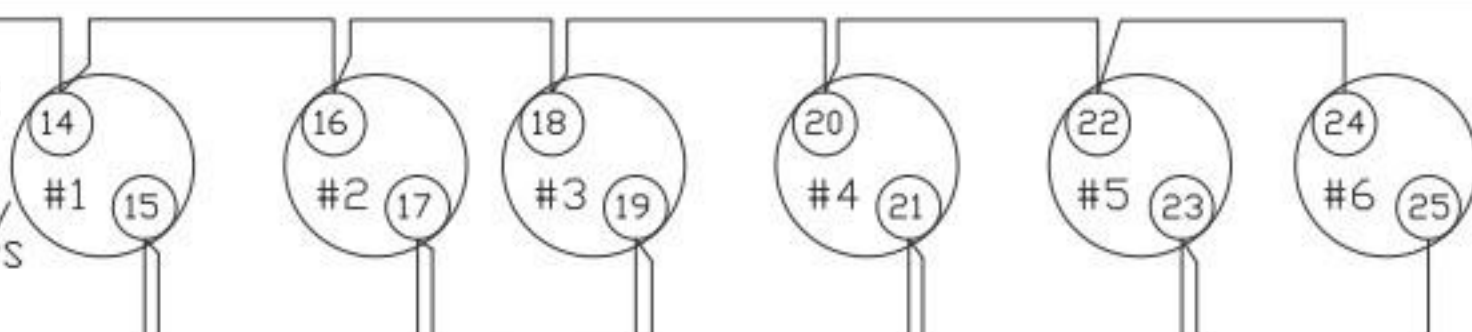


6 LAMP
RECEPTACLE
RP-3952

6 100W/120V
FLOOD LAMPS
LP-33592

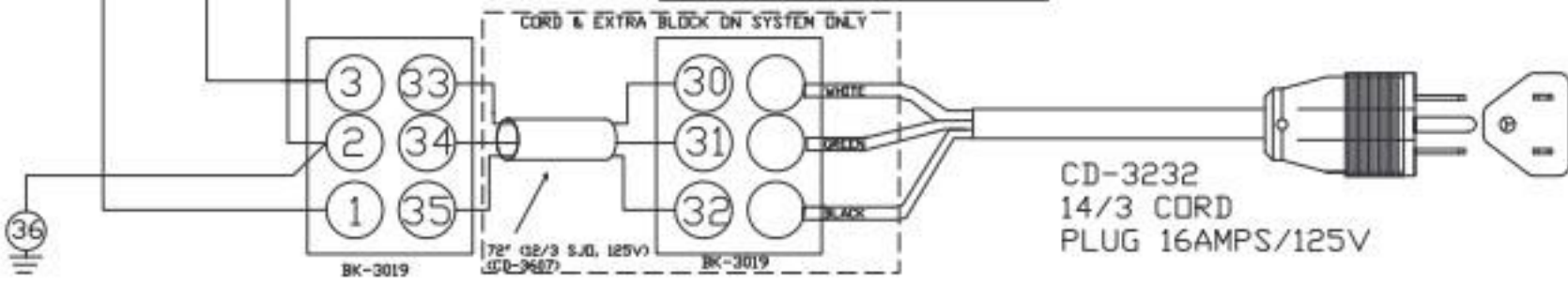


UL DESIGN	VOLTS	WATTS	AMPS
	120V	1320W	11A
	120V	1320W	11A

NOTE: HEATER PADS MUST BE INSTALLED WITH HIGHER WATTAGE TO OUTSIDE OF UNIT.

NOTE #1: ALL NUMBERS IN () = ALTO-SHAAM PART NUMBERS

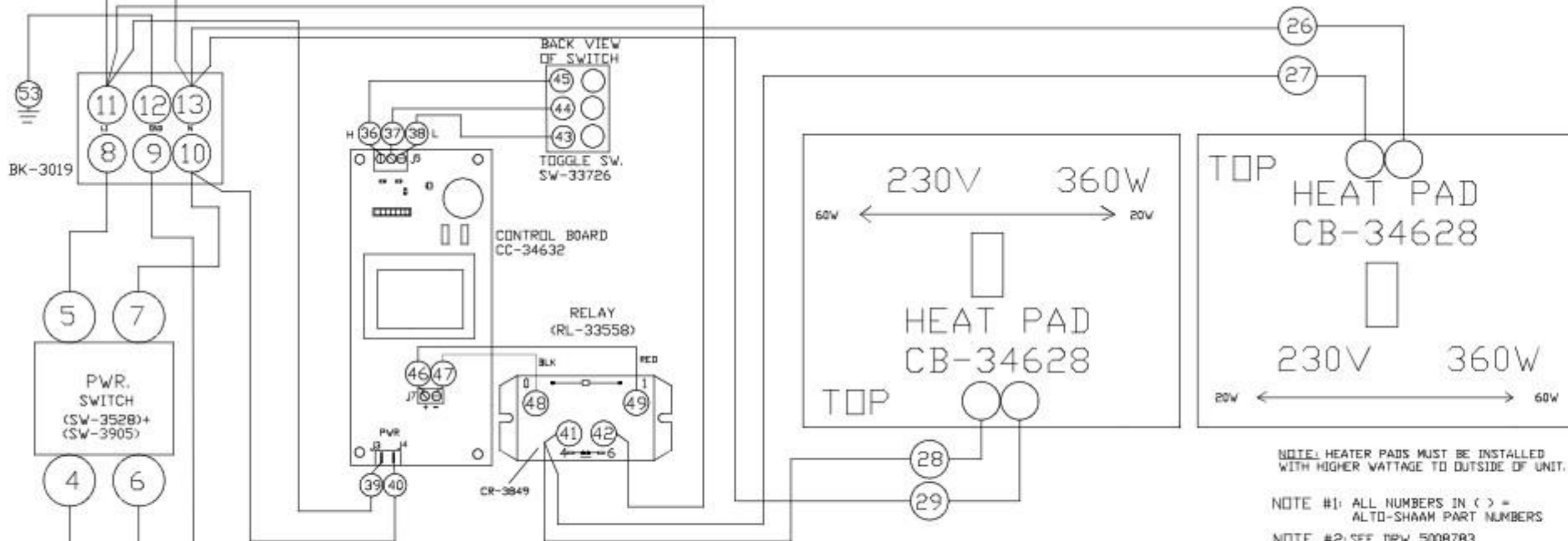
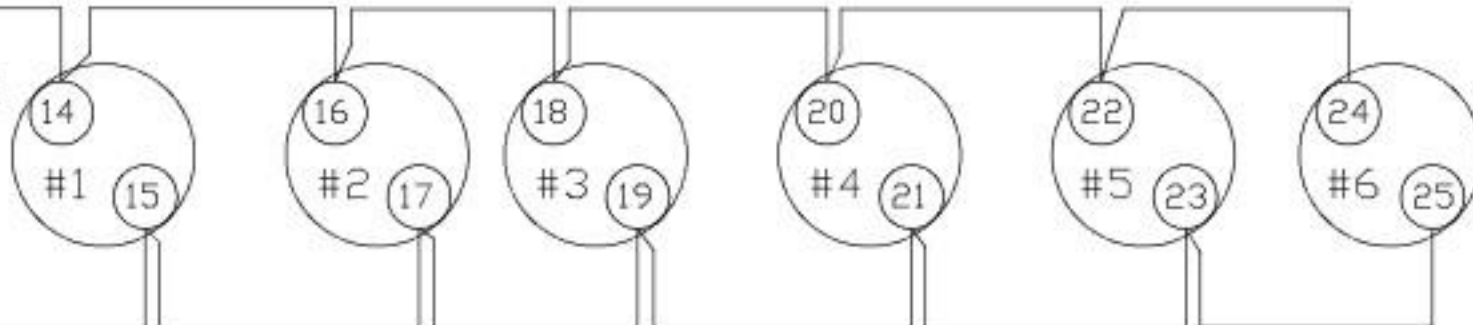
NOTE #2: SEE DRW. 5006329 FOR WIRE ASSEMBLIES



NEMA 5-15P
15A-125V PLUG

5	5878	CHANGE SWITCH FROM 120V SWITCH TO 120/240V SWITCH	1/31/11	JPK
4	5787	FIXED H-M-L SWITCH WIRING	9/27/10	JPK
3	-	RELEASED TO PRODUCTION	3/05/09	KDS
REV	ECO	DESCRIPTION	DATE	APP
ITM2-4B AND SYSTEM 120V 50/60HZ				
ALTO-SHAAM		WIRING DIAGRAM		
BY: MPB DATE: 6/28/07		DWG: 77085		SHEET 1_OF_1

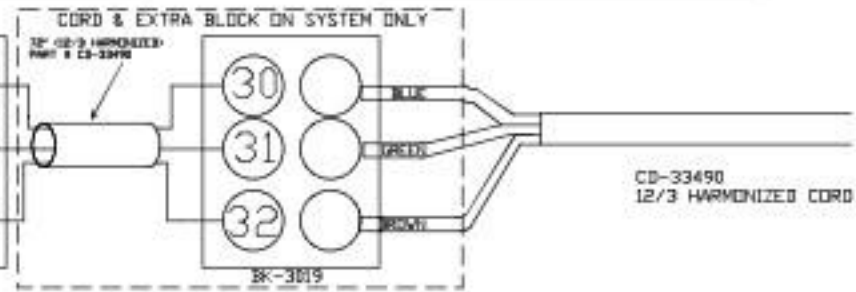
6 LAMP
RECEPTACLE
RP-3955
161W EA @ 230V
FLOOD LAMPS
LP-37051



NOTE: HEATER PADS MUST BE INSTALLED WITH HIGHER WATTAGE TO OUTSIDE OF UNIT.

NOTE #1: ALL NUMBERS IN () = ALTO-SHAAM PART NUMBERS

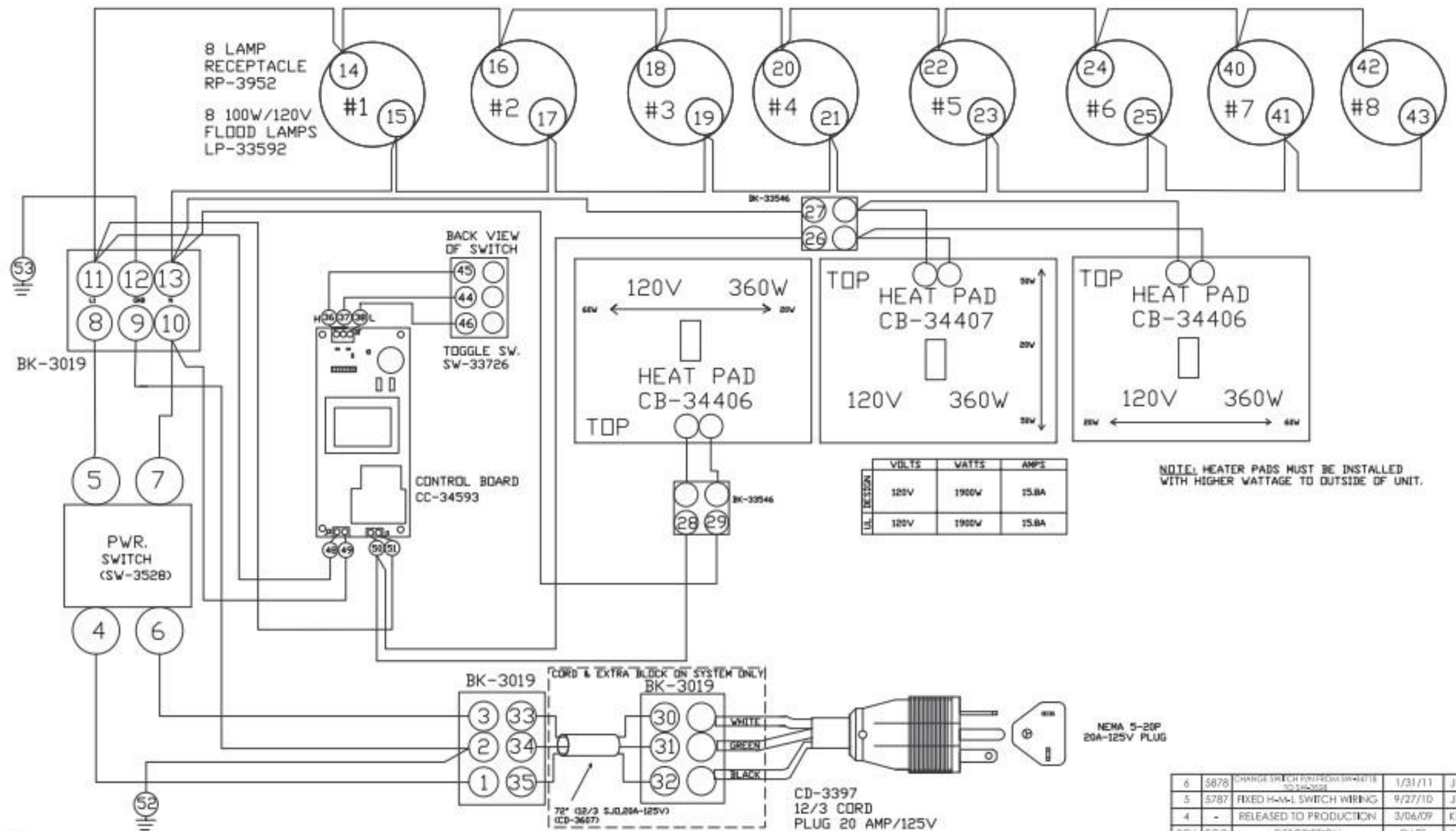
NOTE #2: SEE DRW. 500B783 FOR WIRE ASSEMBLY



REV	ECO	DESCRIPTION	DATE	APP
5	7178	REPLACED LP-33783 WITH LP-37051	10/08/14	TJG
4	5989	INCREASED POWER RATING FROM 1300W LAMP AND HEAT PAD INCREASED	4/26/10	JPK
3	5878	CHANGE SWITCH P/N FROM SW-34718 TO SW-3528 + SW-3905	1/31/11	JPK

ITM2-48 AND SYSTEM 230V 50HZ

ALTO-SHAAM WIRING DIAGRAM
 DWG: 77201 SHEET 1_OF_1
 BY: JPK DATE: 1/16/08



NOTE #1: ALL NUMBERS IN () = ALTO-SHAAM PART NUMBERS
 NOTE #2: SEE DRW. 5006330 FOR WIRE ASSEMBLIES

UL DESIGN	VOLTS	WATTS	AMPS
	120V	1900W	15.8A
	120V	1900W	15.8A

NOTE: HEATER PADS MUST BE INSTALLED WITH HIGHER WATTAGE TO OUTSIDE OF UNIT.

REV	ECO	DESCRIPTION	DATE	APP
6	5878	CHANGE SWITCH FROM SW-3471E TO SW-3528	1/31/11	JPK
5	5787	FIXED H-M-L SWITCH WIRING	9/27/10	JPK
4	-	RELEASED TO PRODUCTION	3/06/09	KDS

ITM2-72 AND SYSTEM 120V 50/60HZ

ALTO-SHAAM WIRING DIAGRAM

BY: MPB DATE: 6/28/07 DWG: 77086 SHEET 1_OF_1

