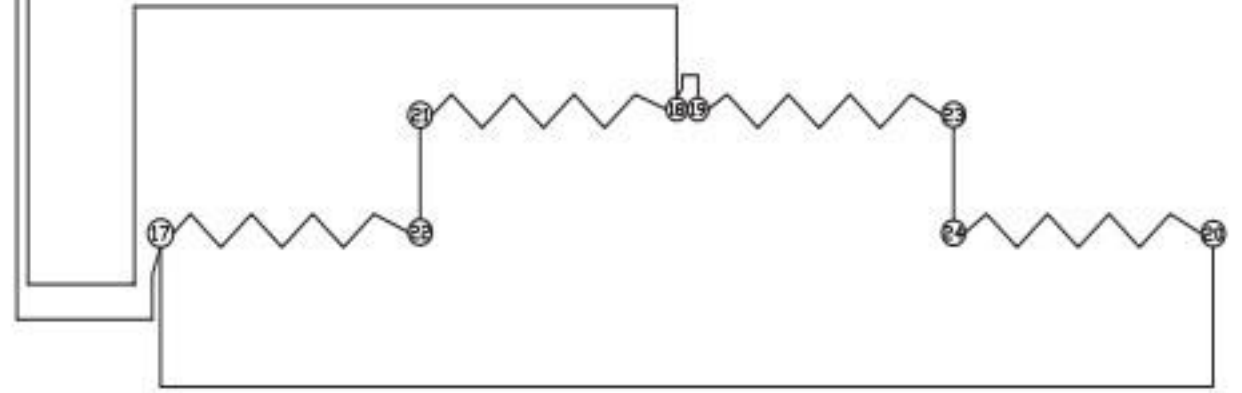
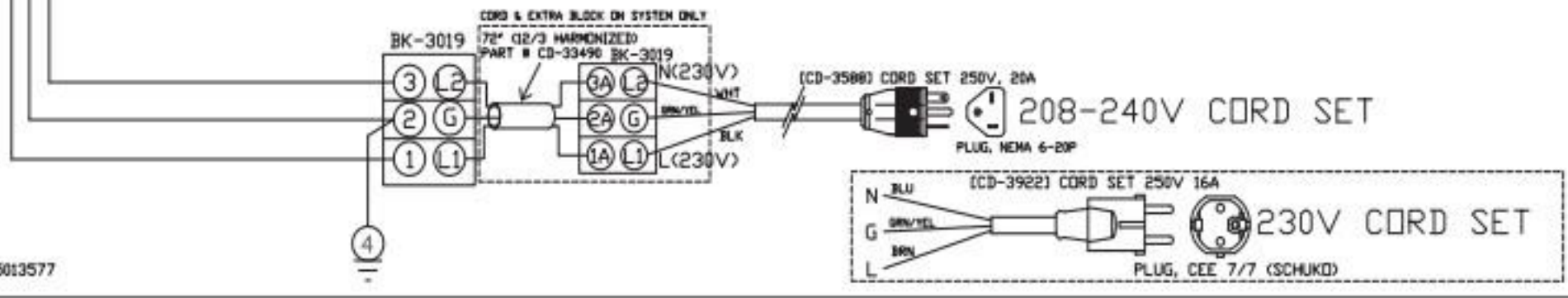


TOP VIEW OF CONTROL WIRING UNDER CANOPY



4 WRAPS OF HI-TEMP CABLE [CB-3045] 33' 1"= 21.81 OHMS EACH @ AMBIENT TEMP

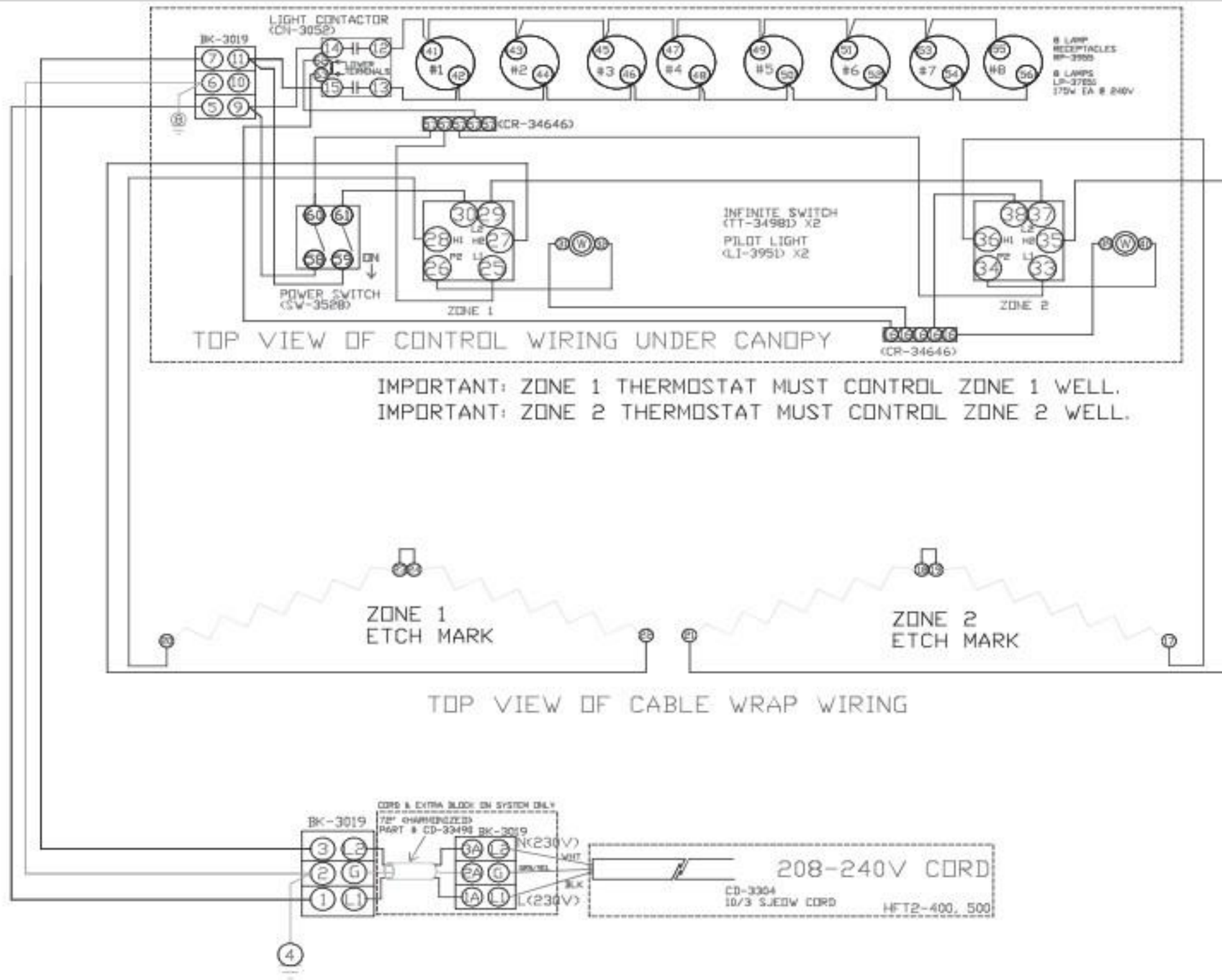
IMPORTANT: THIS IS THE BOTTOM VIEW OF THE WELL.



REFERENCE WIRE ASSEMBLY 5013577

3	7178	REPLACE ORIGINAL WIRING WITH Change CD-33490 to CD-33490 cordset	4/14/15	TJK
2	8921	INCREASE POWER RATING OF LAMP VOLTAGE INSTANT RESTART	4/28/11	JPK
1	8921	ADD LIGHT CONTACTOR PER UL	3/30/11	JPK
REV	ECO	DESCRIPTION	DATE	APP
HFT2-HFT2SYS-300 208-240V, 230V				
ALTO-SHAAM		WIRING DIAGRAM		
		DWG: 77390	SHEET	
BY JPK DATE: 2/21/11		1_OF_1		

230V 50/60HZ
208-240V 50/60HZ



TOP VIEW OF CONTROL WIRING UNDER CANOPY

IMPORTANT: ZONE 1 THERMOSTAT MUST CONTROL ZONE 1 WELL.
 IMPORTANT: ZONE 2 THERMOSTAT MUST CONTROL ZONE 2 WELL.

TOP VIEW OF CABLE WRAP WIRING

450 4 WRAPS OF HI-TEMP CABLE (CB-3045)
 36" = 23.7 DHMS @ AMBIENT TEMP
 500 4 WRAPS OF HI-TEMP CABLE (CB-3045)
 30" = 19.8 DHMS @ AMBIENT TEMP

REV	ECO	DESCRIPTION	DATE	APP
7	JPK	REWORK OF BREVWIRING (SEE INCREASE IN CORD LENGTH)	4/14/15	LJG
6	JPK	INCREASE POWER RATED DUE TO LAMP	4/28/11	JPK
5	JPK	CHANGED THE CORD FROM 10/3 TO 10/2 AND ADD LIGHT CONTACTOR PER 14	3/30/11	JPK

HFT2-HFT2SYS-400, 500 208-240V, 230V	
ALTO-SHAAM	WIRING DIAGRAM
BY: JPK DATE: 10/27/10	DWG#: 77380
	SHEET 1 OF 1