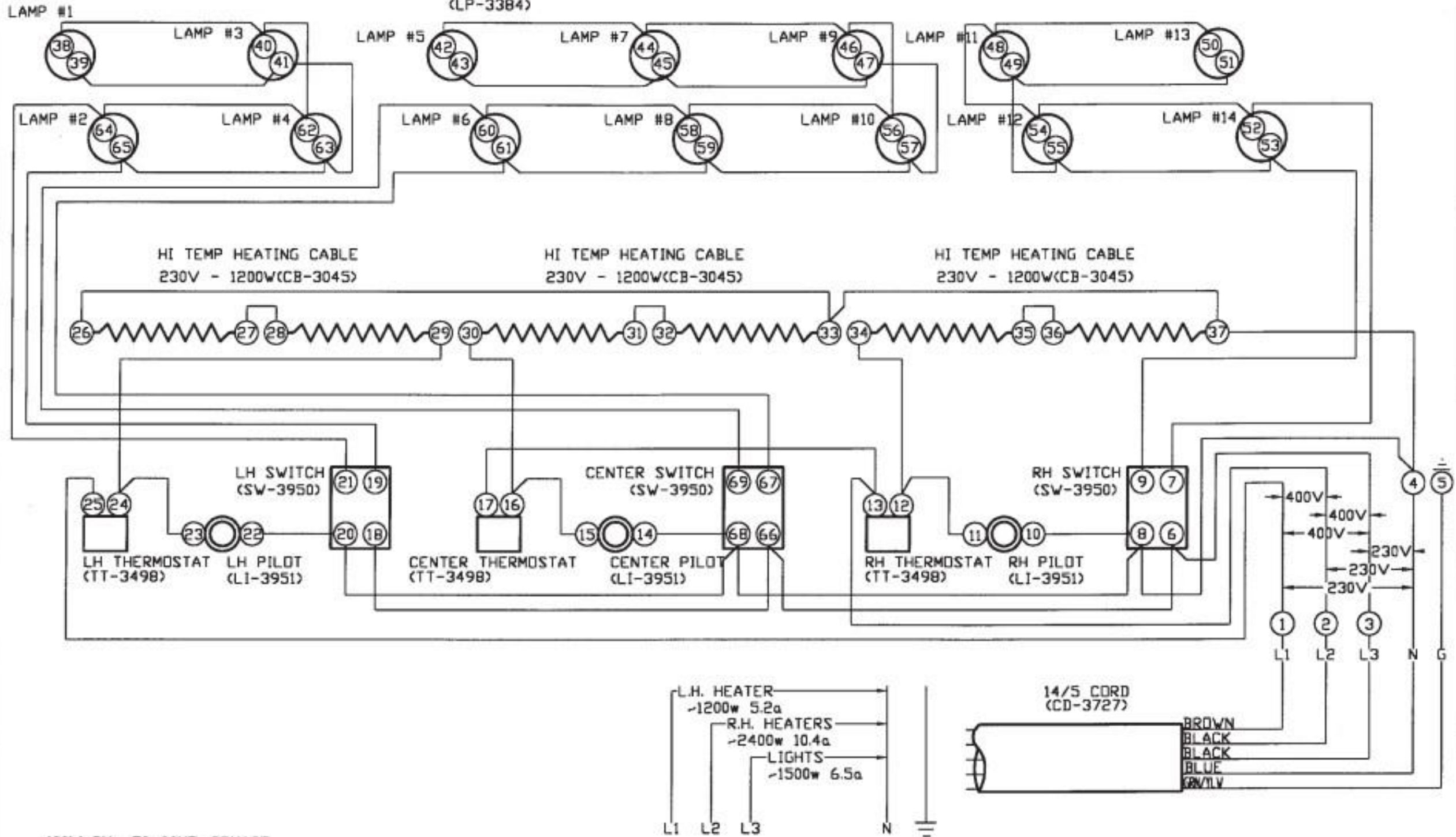


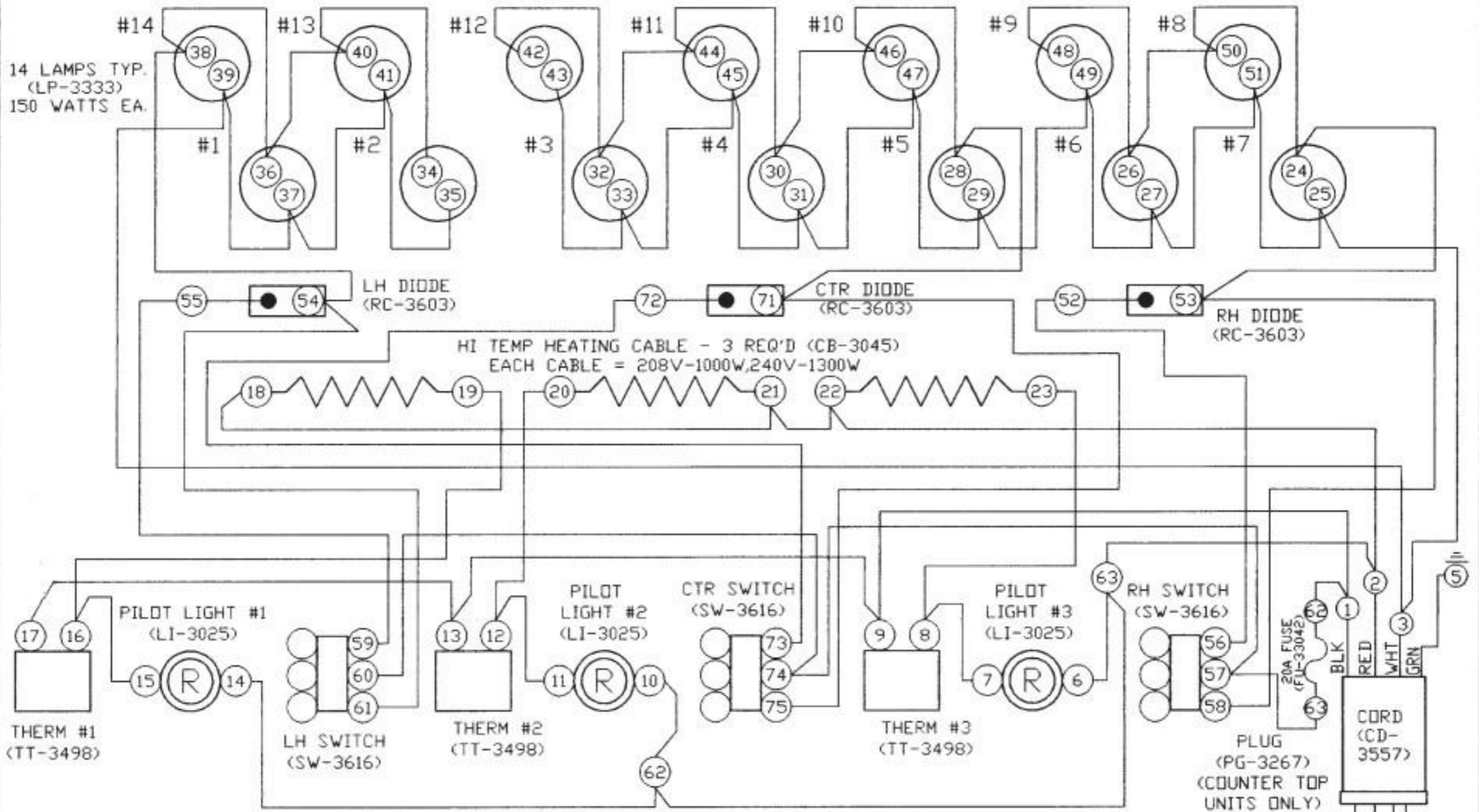
14 LAMPS 150 WATTS EACH
(LP-3384)



400V 3N- 50-60HZ 3PHASE
AT 230V: 5,700 WATTS. Max. 10.4 AMPS/PHASE

ALL NUMBERS IN () = ALTO-SHAAM PART NO'S
 SEE DRW. #B-8586 FOR WIRE ASSEMBLIES

REVISIONS			DCD,ED-96,ED-96/P,PL,PR 230/400V 3-PHASE		
NO.	DATE	BY	WIRING DIAGRAM		
1			ALTO-SHAAM INC. MEMONEE FALLS, WISCONSIN		
2					
3			DRAWN BY RS	SCALE 1"=1"	DWG. NO.
4			APP'D DAR	DATE 8/28/95	A-7429
5					



120/208V OR 120/240V
60Hz 60Hz
5100W 6000W
22.5A 24.7A

NOTE #1: ALL NUMBERS IN () = ALTO-SHAAM PART NO'S
 NOTE #2: SEE DRW. #B-8525 FOR WIRE ASSEMBLIES

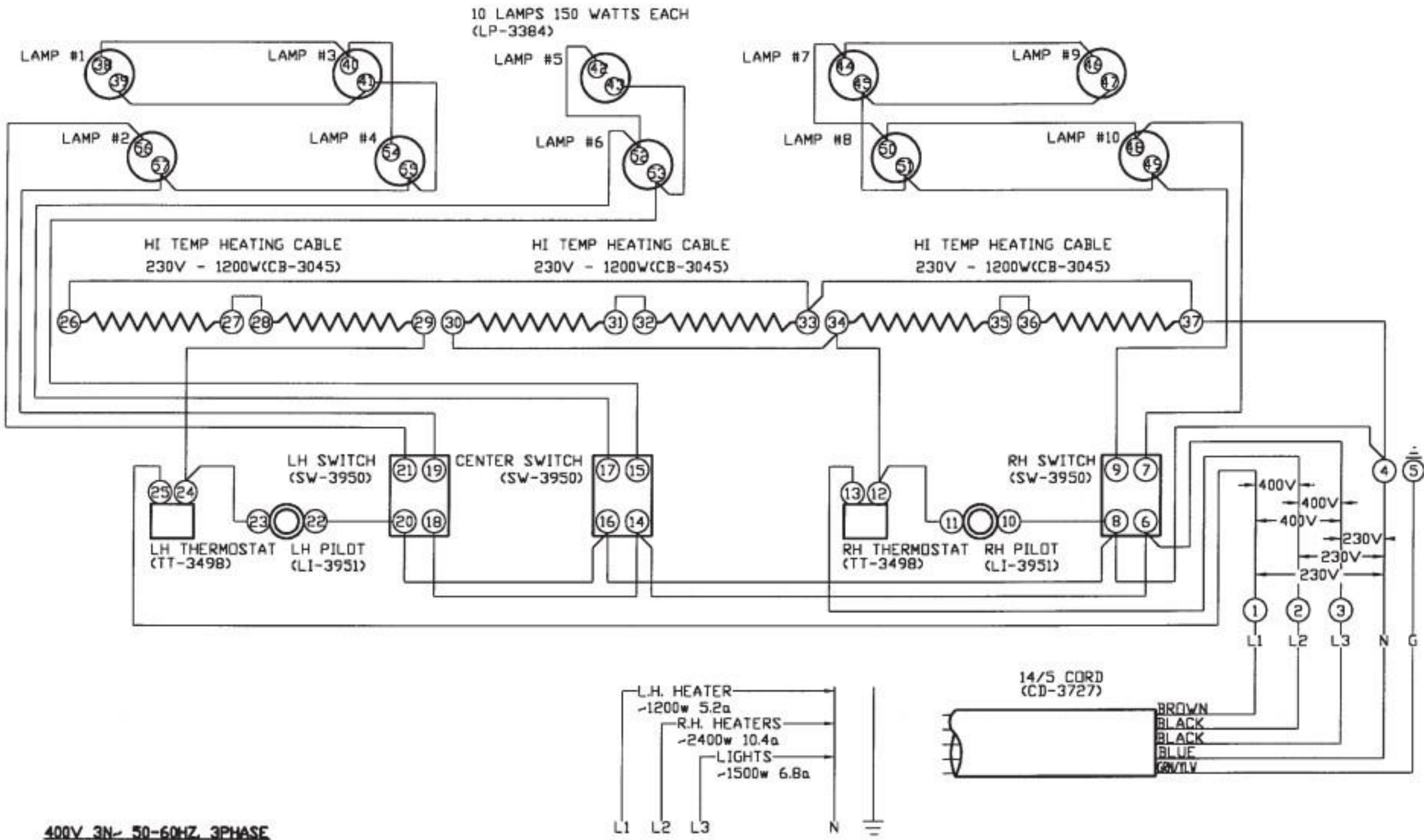
REVISIONS		
NO.	DATE	BY
5	03-03-93	LRW
6	07-19-94	RS
7		
8		
9		

DCD,ED-96,ED-96/PR,/PL 120/240V

WIRING DIAGRAM

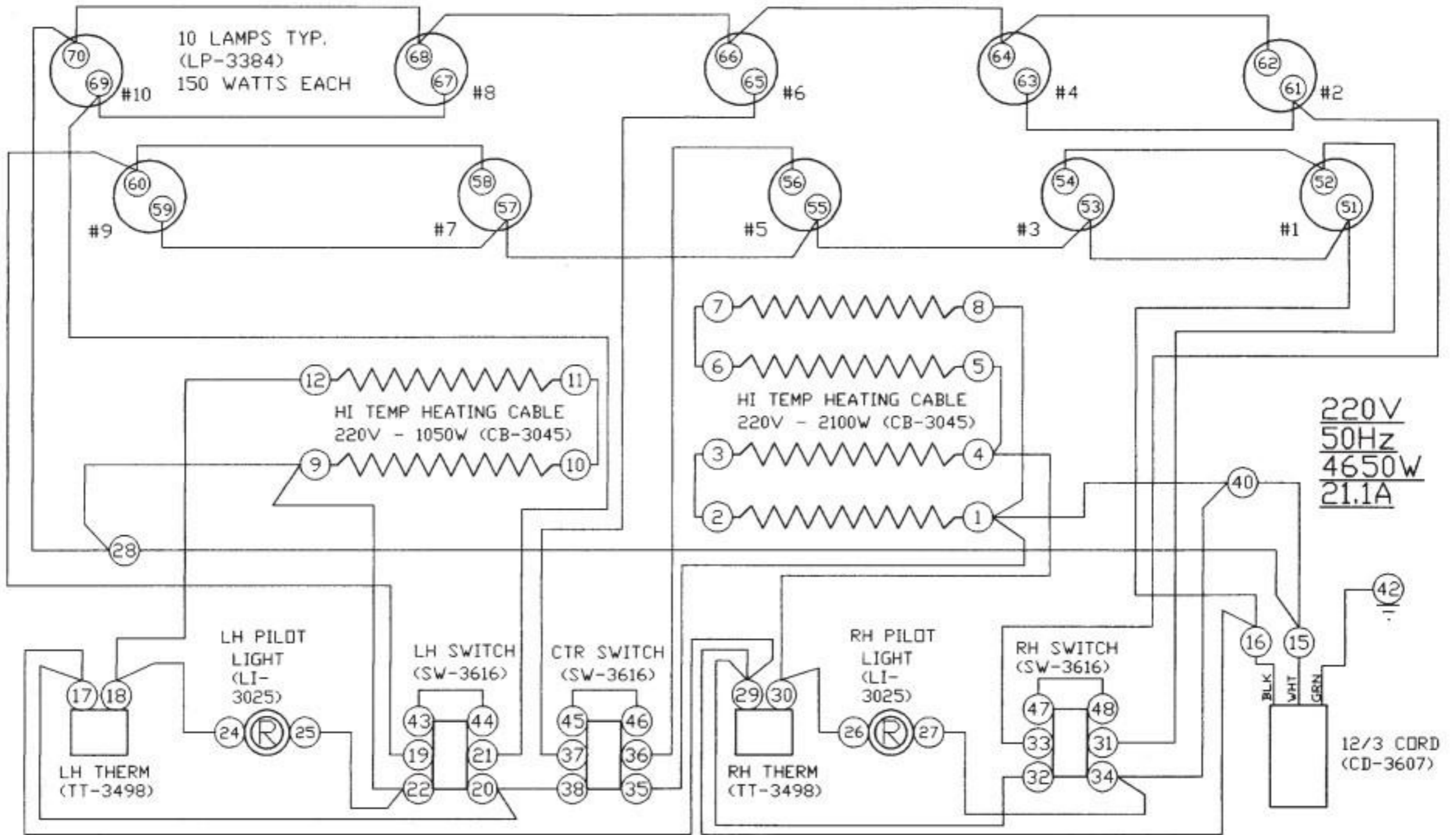
ALTO-SHAAM INC.
 MENOMONEE FALLS, WISCONSIN

DRAWN BY LRW	SCALE 3/4"=1"	DWG. NO.
APP'D <i>LRW</i>	DATE 03/03/93	A-7260



REVISIONS			DCD,ED-72,ED-72/P,PL,PR 230/400V 3-PHASE		
NO.	DATE	BY	WIRING DIAGRAM		
1			ALTO-SHAAM INC. MENOMONCE FALLS, WISCONSIN		
2					
3			DRAWN BY RS	SCALE 1"=1"	DWG. NO.
4			APP'D DAR	DATE 8/28/95	A-7428
5					

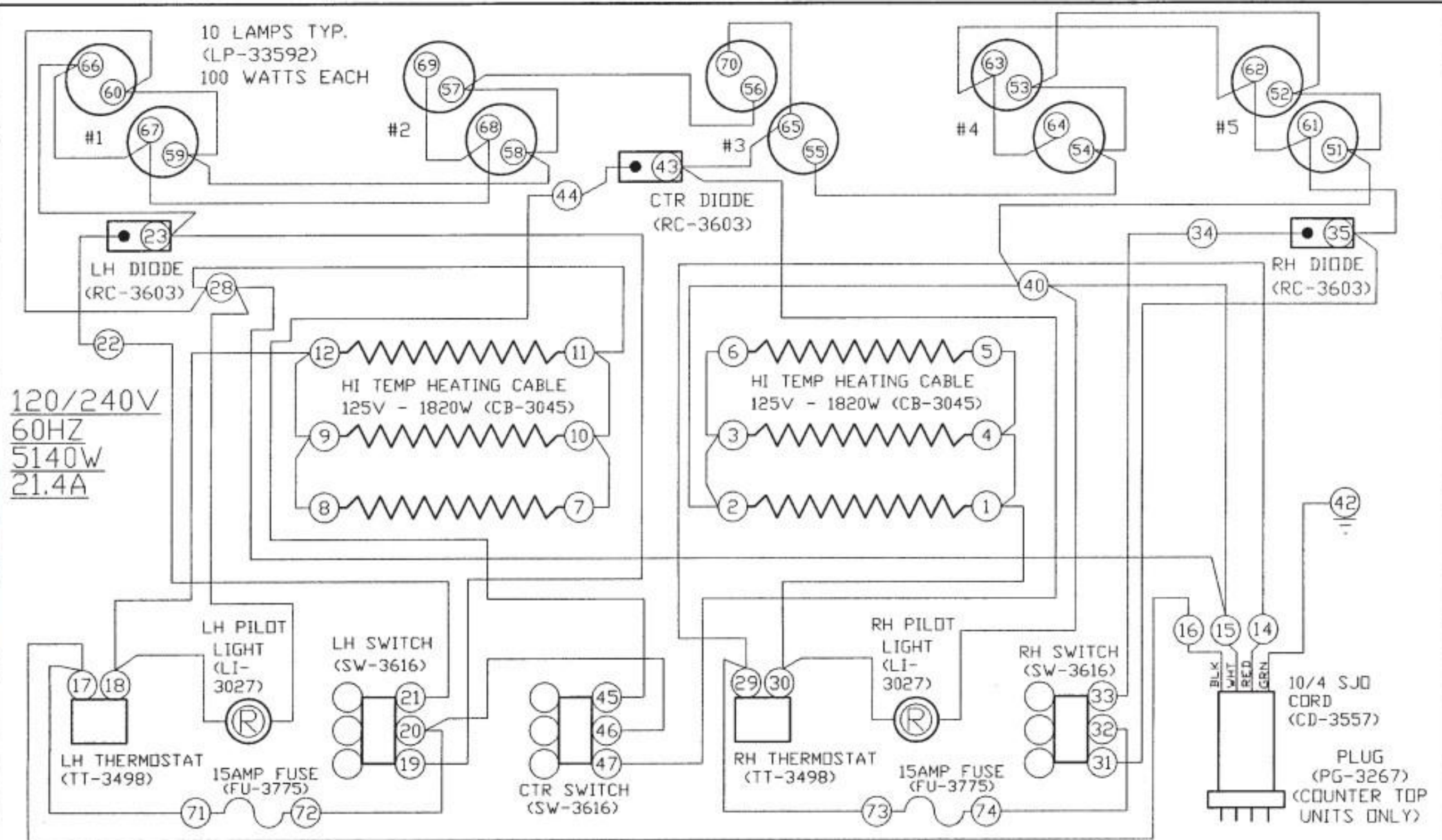
ALL NUMBERS IN () = ALTO-SHAAM PART NO'S
SEE DRW. #B-8581 FOR WIRE ASSEMBLIES



NOTE #1: ALL NUMBERS IN () = ALTO-SHAAM PART NO'S

NOTE #2: SEE DRW. #B-8581 FOR WIRE ASSEMBLIES

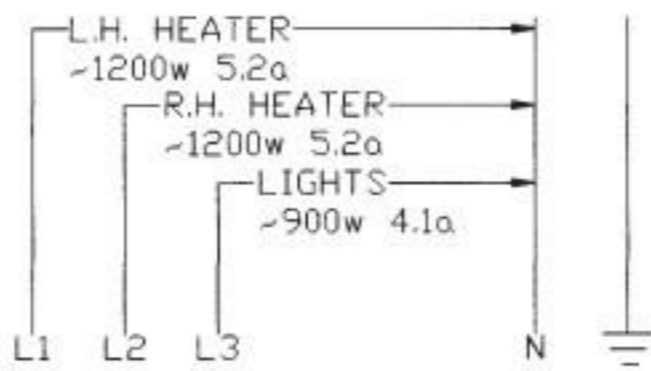
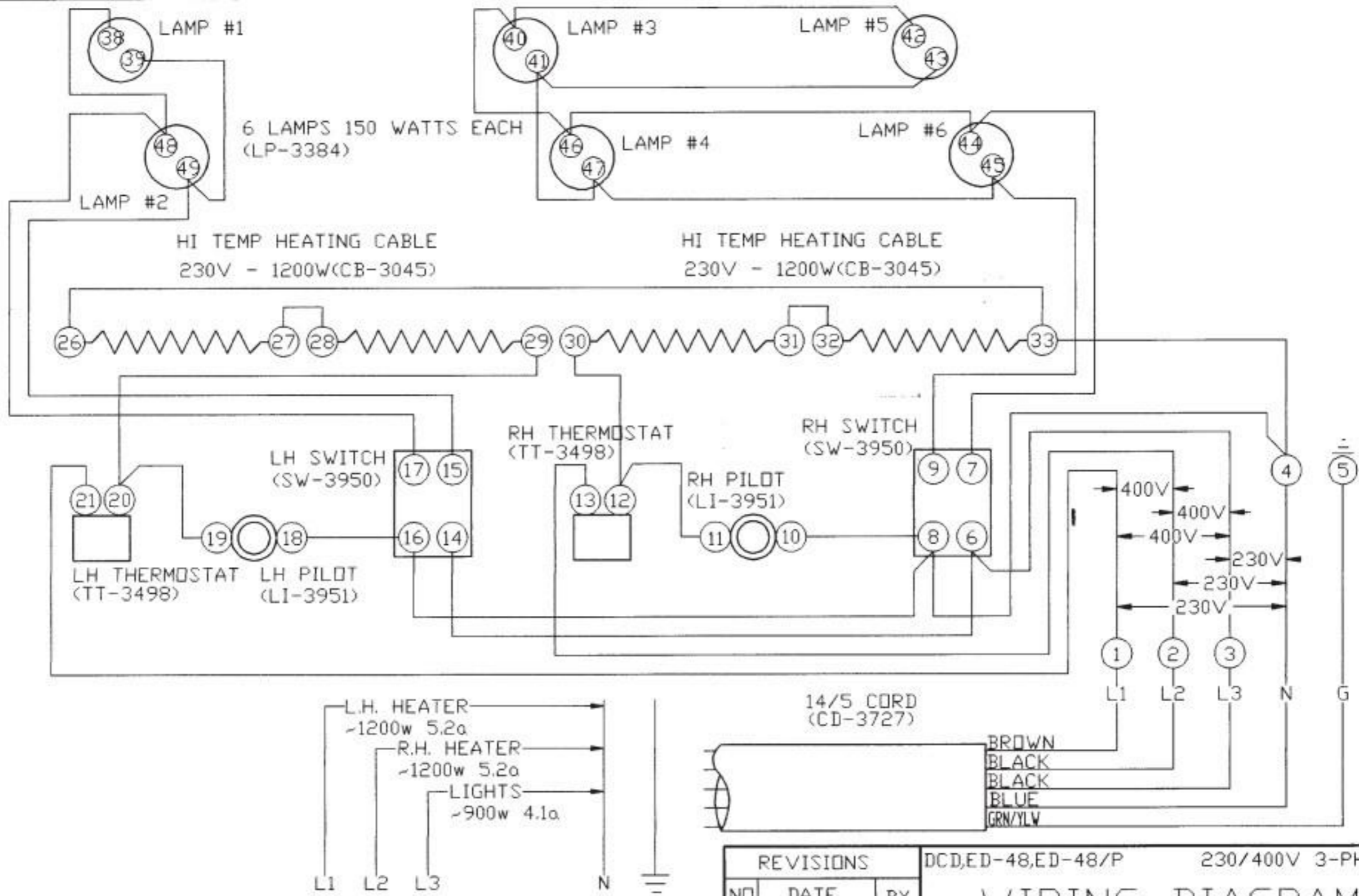
REVISIONS			DCD,ED-72,ED-72/P,/PR,/PL	220V
NO	DATE	BY	WIRING DIAGRAM	
1	6-23-88	ALD	ALTO-SHAAM INC.	
2	9-6-88	ALD	MENOMONEE FALLS, WISCONSIN	
3	10-1-92	LRW	DRWN BY ALD	SCALE 1=1
4			APP'D BY <i>[Signature]</i>	DATE 3-25-87
				DWG NO
				A-7289



NOTE #1: ALL NUMBERS IN () = ALTO-SHAAM PART NO'S

NOTE #2: SEE DRW. #B-8574 FOR WIRE ASSEMBLIES

REVISIONS			ED-72,ED-72/P,/PR,/PL	120/240V	
NO	DATE	BY	WIRING DIAGRAM ALTO-SHAAM INC. MENOMONEE FALLS, WISCONSIN		
5	03-01-93	LRW			
6	07-19-94	RS			
7	01-13-98	RS			
8	01-15-01	NW	DRWN BY ALD	SCALE 1=1	DWG NO
			APP'D BY DAR	DATE 11-13-86	A-7281



400V 3N~ 50HZ, 3PHASE

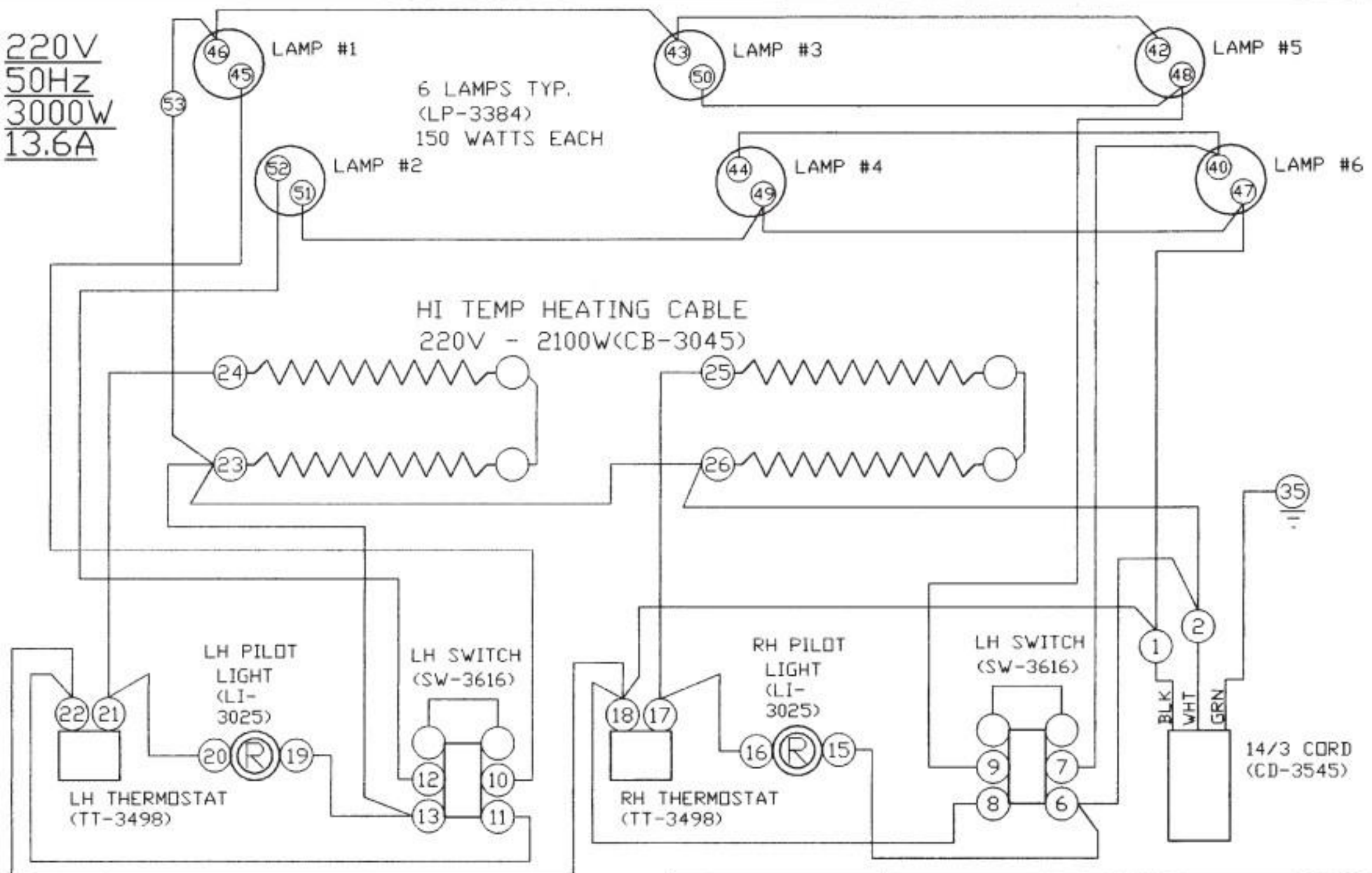
AT 230V: 3,300 WATTS, 5.2 AMPS/PHASE

ALL NUMBERS IN () = ALTO-SHAAM PART NO'S
SEE DRW. #B-8580 FOR WIRE ASSEMBLIES



REVISIONS			DCD,ED-48,ED-48/P		230/400V 3-PHASE	
NO	DATE	BY	WIRING DIAGRAM			
1			ALTO-SHAAM INC. MENDOTA FALLS, WISCONSIN			
2						
3			DRWN BY RS	SCALE 1=1	DWG NO	
4			APP'D BY DAR	DATE 8/28/95	A-7427	

220V
50Hz
3000W
13.6A



REVISIONS			DCD,ED-48,ED-48/P	220V
NO	DATE	BY	WIRING DIAGRAM	
1	06-23-88	ALD	ALTO-SHAAM INC.	
2	09-06-88	ALD	MENOMONEE FALLS, WISCONSIN	
3	02-23-95	RS	DRWN BY ALD	SCALE 1=1
4			APP'D BY <i>[Signature]</i>	DATE 3-23-87
				DWG NO
				A-7288

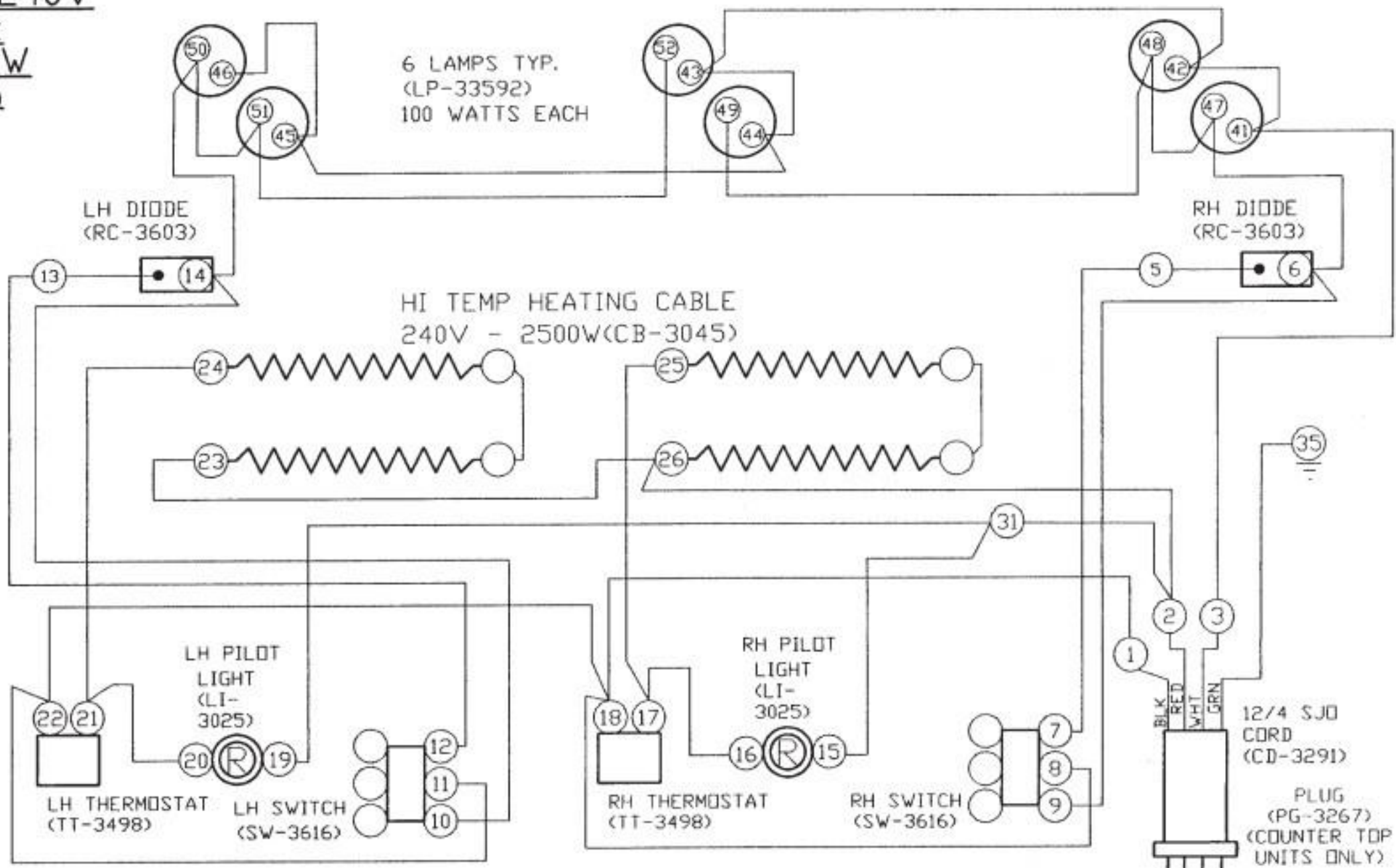
NOTE #1: ALL NUMBERS IN () = ALTO-SHAAM PART NO'S

NOTE #2: SEE DRW. #B-8580 FOR WIRE ASSEMBLIES

Operation and Care Manual #881-3

Pg. 25

120/240V
60Hz
3400W
18.0A



WIRING DIAGRAM

MODELS: ED-48, ED-48/P 120-240V

ALTO-SHAAM
MENOMONEE FALLS, WISC. 53052-450

BY: ALD SCALE: NONE DWG: A-7277
APP'D: DAR DATE: 11/13/86

NO.	REVISION	BY
5	01/15/01	NW
4	03/01/93	LRW
3	08/29/90	ALD
2	09/06/88	ALD
1	03/23/87	ALD

NOTE #1: ALL NUMBERS IN () = ALTO-SHAAM PART NO'S

NOTE #2: SEE DRW. #B-8571 FOR WIRE ASSEMBLIES