



Hot Food Holding Cabinets

750-S



Units built December 2023—March 2025

Manufacturer's Information

Copyright

© Copyright 12/23 by Alto-Shaam, Inc.
 All rights reserved.
 This manual or any portion thereof may not be reproduced or used in any manner whatsoever without the express written permission of Alto-Shaam, Inc

Trademarks

All trademarks referenced in this documentation are the property of their respective owners.

Manufacturer

Alto-Shaam, Inc.
 P.O. Box 450
 W164 N9221 Water Street
 Menomonee Falls, WI 53052

Models Covered

750-S	Heated Holding Cabinets
--------------	-------------------------

Serial Number

The unit serial number is required for identifying and ordering the correct service parts.
 Record the unit serial number below for reference.

Serial Number

Parts Finder Tool

Interactive diagrams from this Parts Manual are available online at our Parts Finder Tool:
<https://www.alto-shaam.com/en/customer-support/parts>.
 Or, scan the QR code below.



Parts Ordering Information

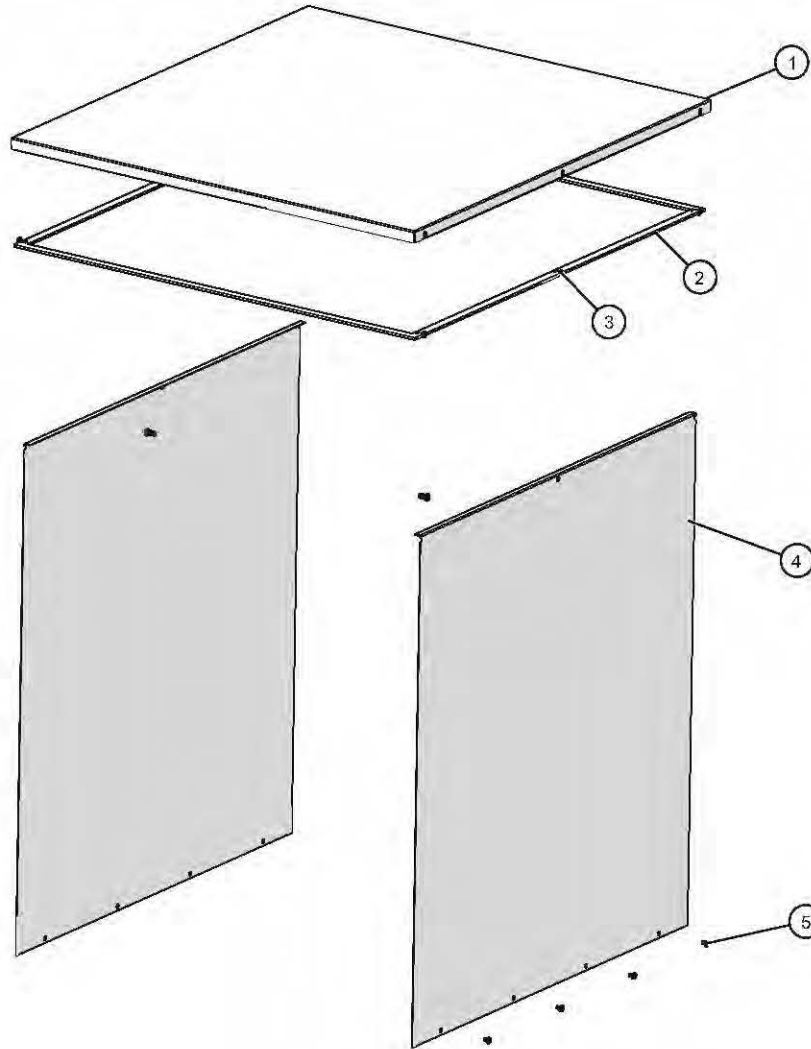
Original manufacturer's replacement parts may be ordered directly from the Alto-Shaam network of Authorized Service Agents and Parts Distributors. Follow this link for a map to a local partner: <https://www.alto-shaam.com/en/how-to-buy>. If you are an Authorized Service Agent or Parts Distributor, please submit your purchase order to parts@alto-shaam.com.

Non-OEM parts may be substituted; however, these parts must be of equal quality and specifications as those provided by Alto-Shaam.

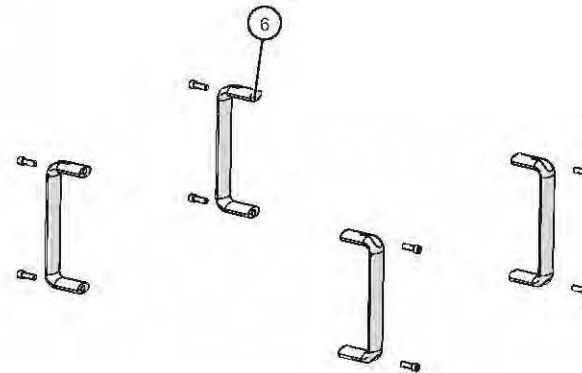
Table of Contents

Manufacturer's Information.....	2	Cordset/Ferrule Assembly, NEMA 6-15P.....	45
Table of Contents	3	Cordset/Ferrule Assembly, CEE-7/7	46
750-S Exterior Panel Package "A", Reach-In	4	Cordset/Ferrule Assembly, BS 1363.....	47
750-S Exterior Panel Package "B", Reach-In	5	Caster Package, 2-1/2"	48
750-S Cavity Package "A", Reach-In	6	Caster Package, 3-1/2"	49
750-S Cavity Package "B", Pass-Thru	7	Caster Package, 5"	50
750-S Core Assembly, Reach-In, Simple.....	8	Caster Package, 5" (all swivel).....	51
750-S Core Assembly, Pass-Thru, Simple.....	9	Leg Package, 6"	52
750-S Core Assembly, Reach-In, Deluxe	10		
750-S Core Assembly, Reach-In with Timer, Deluxe.....	11		
750-S Core Assembly, Pass-Thru with Timer, Deluxe.....	12		
Heating Wire Service Kits.....	13		
750-S Chassis Assembly, Manual 120V	14		
750-S Chassis Assembly, Manual 208/240V	15		
750-S Chassis Assembly, Manual 230V	16		
750-S Chassis Assembly, Deluxe 230V	17		
Control Assembly, Deluxe with Probe	18		
Control Assembly, Deluxe with Timer	19		
750-S Bonnet Package "A", Manual 120V.....	20		
750-S Bonnet Package "B", Manual 208V-240V.....	21		
750-S Bonnet Package "C", Manual 230V.....	22		
750-S Bonnet Package "D", Electronic 120V	23		
750-S Bonnet Package "F", Electronic 230V	24		
750-S Bonnet Package "G", Electronic with Timer, 120V.....	25		
750-S Bonnet Package "I", Electronic with Timer, 230V	26		
750-S Bonnet Package "J", Electronic with Probe, 120V	27		
750-S Bonnet Package "L", Electronic with Probe, 230V	28		
Side Racks, Domestic	29		
Side Racks, International	30		
Shelves, Reach-In.....	31		
Shelves, Pass-Thru	32		
750-S Slab Door Package "A", Reach-In.....	33		
750-S Slab Door Package "C", Pass-Thru.....	34		
750-S Window Door Package "B", Reach-In.....	35		
750-S Window Door Package "D", Pass-Thru	36		
750-S Bumper Assembly (optional)	37		
Security Panel Assembly (optional)	38		
Cordset/Ferrule Assembly, NEMA 5-15P.....	39		
Cord, 12/3 with Ferrules, 12'	41		
Cordset/Ferrule Assembly, SAA AS 3112-16P.....	42		
Cordset Assembly, AS/NZS 3112.....	43		
Cordset Assembly, AS/NZS 3112 2000	44		

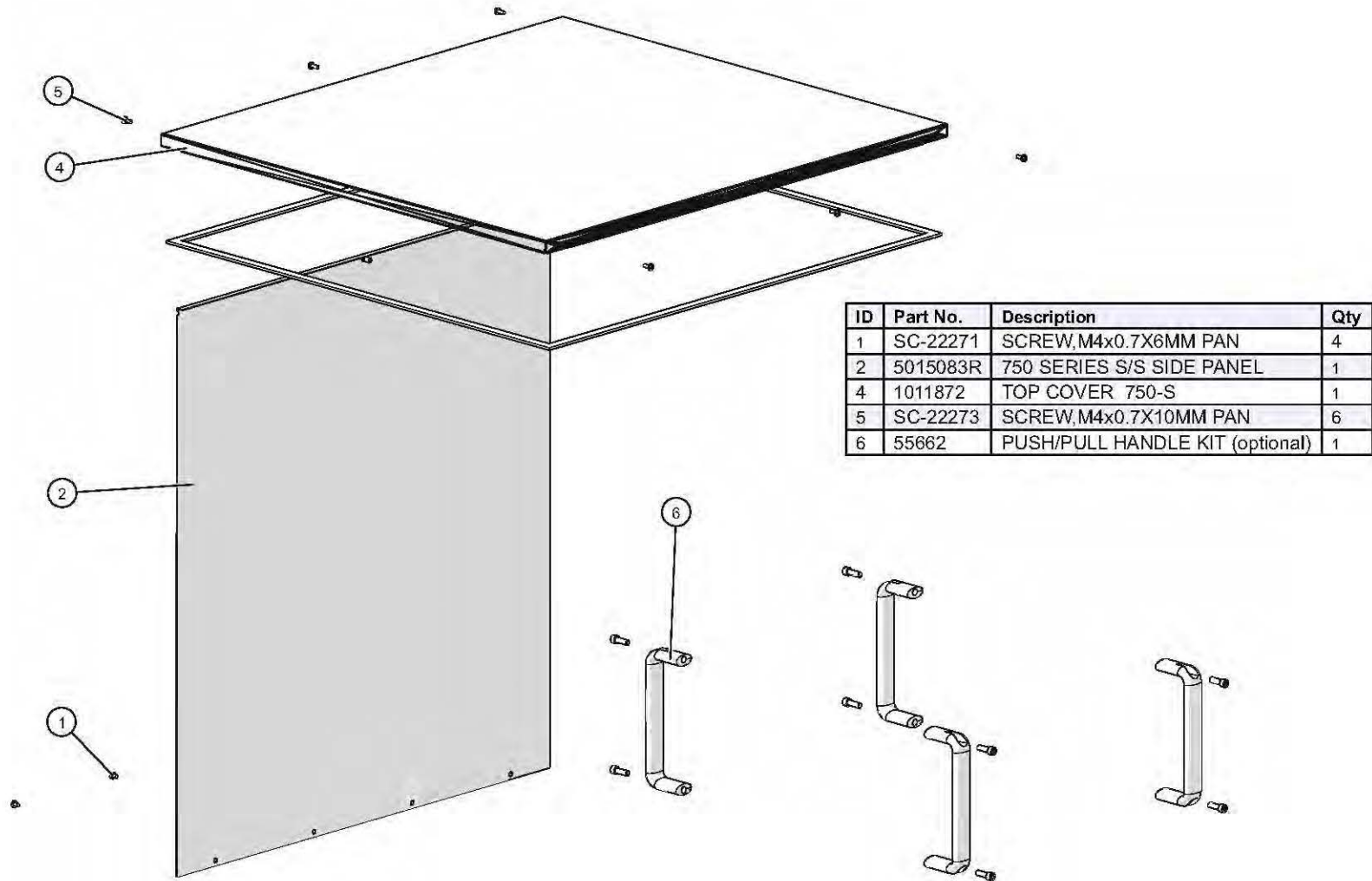
750-S Exterior Panel Package "A", Reach-In



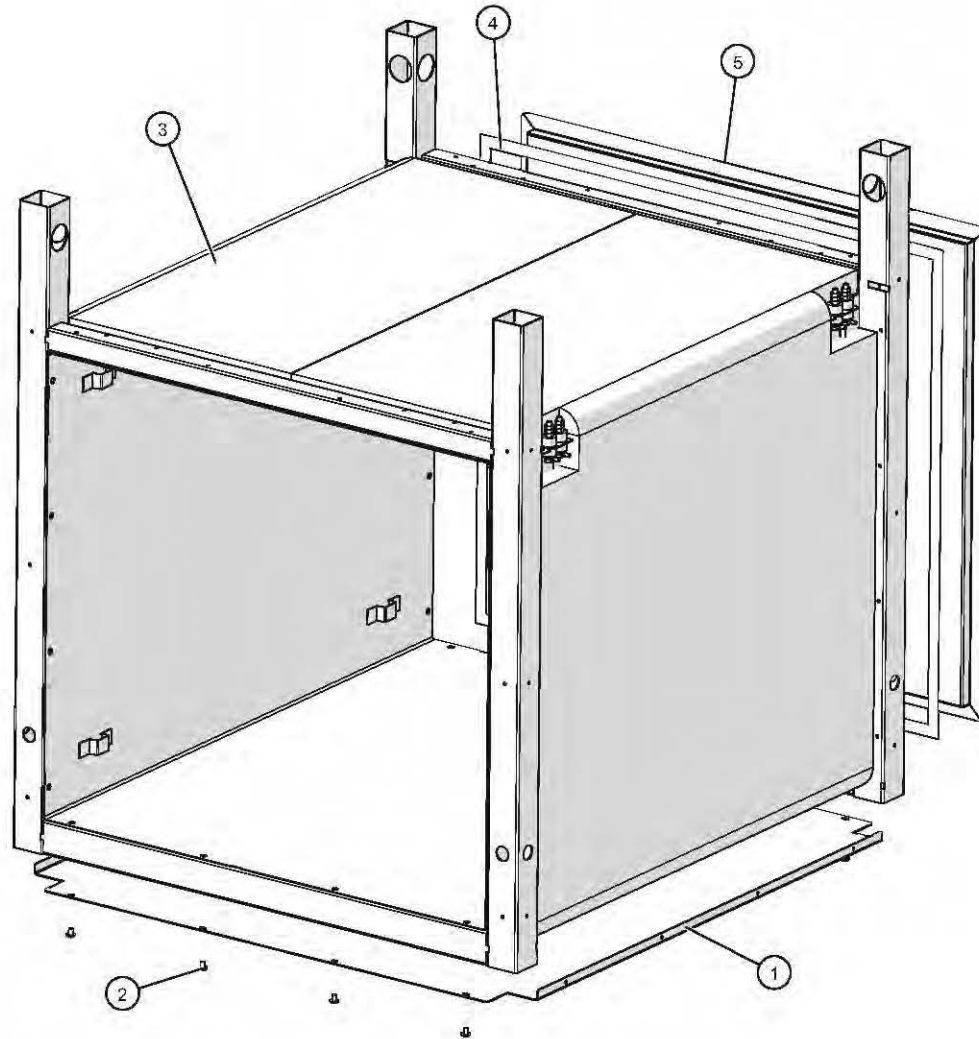
ID	Part No.	Description	Qty
1	1011872	TOP COVER 750-S	1
2	GS-23622	GASKET,,ADHESIVE,,125X.375 FOAM	1
3	SC-22273	SCREW,M4x0.7X10MM PAN	6
4	5015083R	750 SERIES S/S SIDE PANEL	2
5	SC-22271	SCREW,M4x0.7X6MM PAN	8
6	55662	PUSH/PULL HANDLE KIT (optional)	1



750-S Exterior Panel Package "B", Reach-In

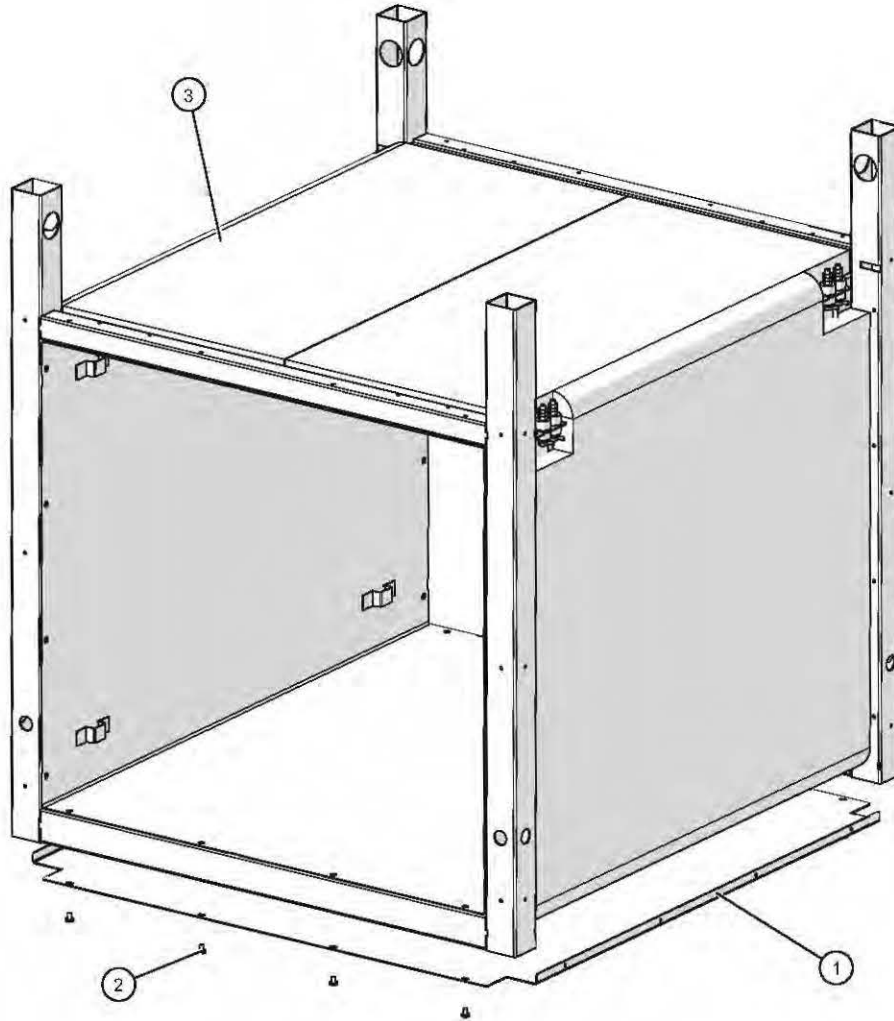


750-S Cavity Package "A", Reach-In



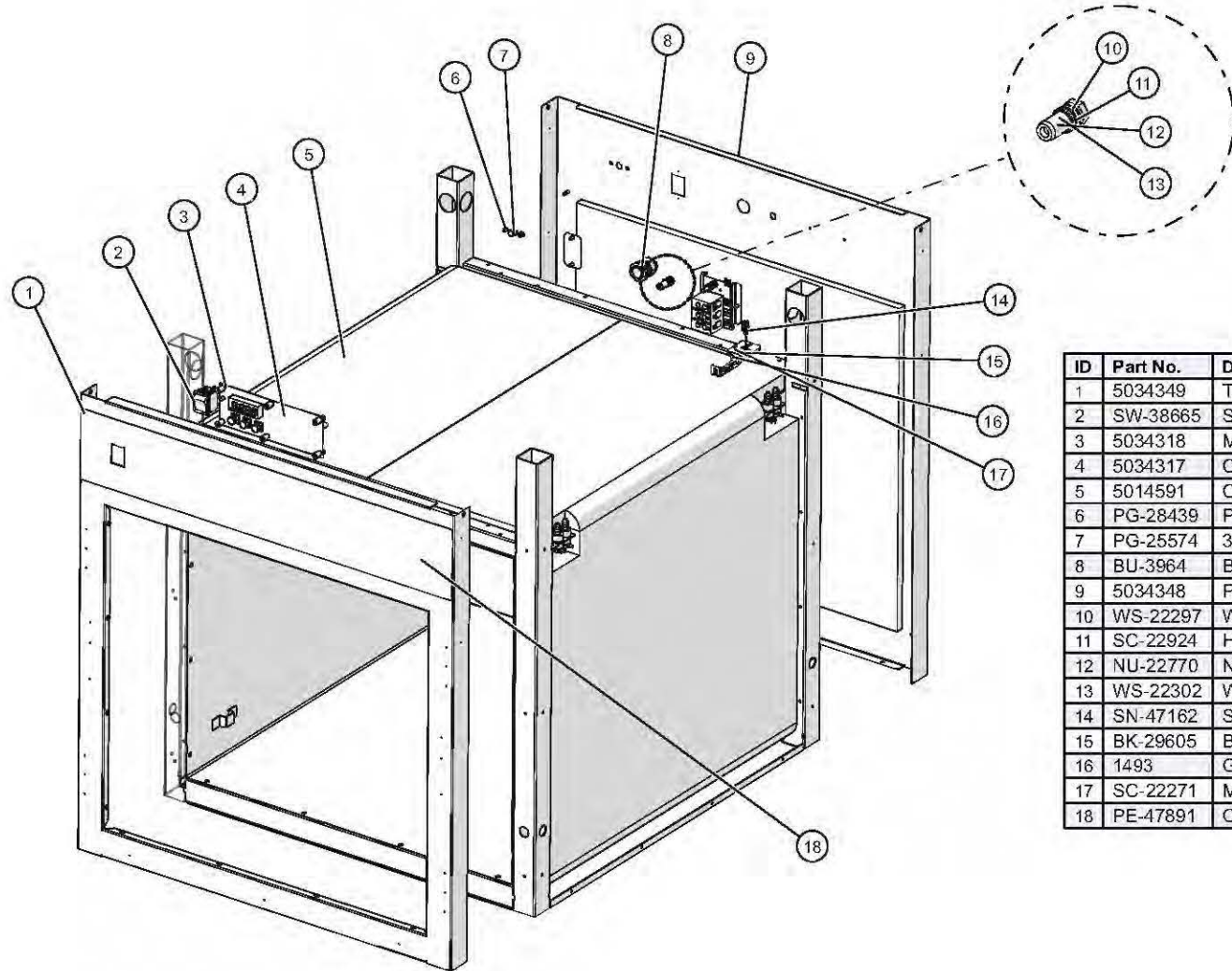
ID	Part No.	Description	Qty
1	1010394	BOTTOM PANEL, 750 SERIES	1
2	SC-2459	8-32 x 1/4" PHIL SCREW	8
3	5012840	750-S CABLE INSULATION ASSB	1
4	TA-24637	.5" WIDE X 25 MIL VHB TAPE	1
5	1011861	750-S, INNER BACK PANEL	1

750-S Cavity Package "B", Pass-Thru



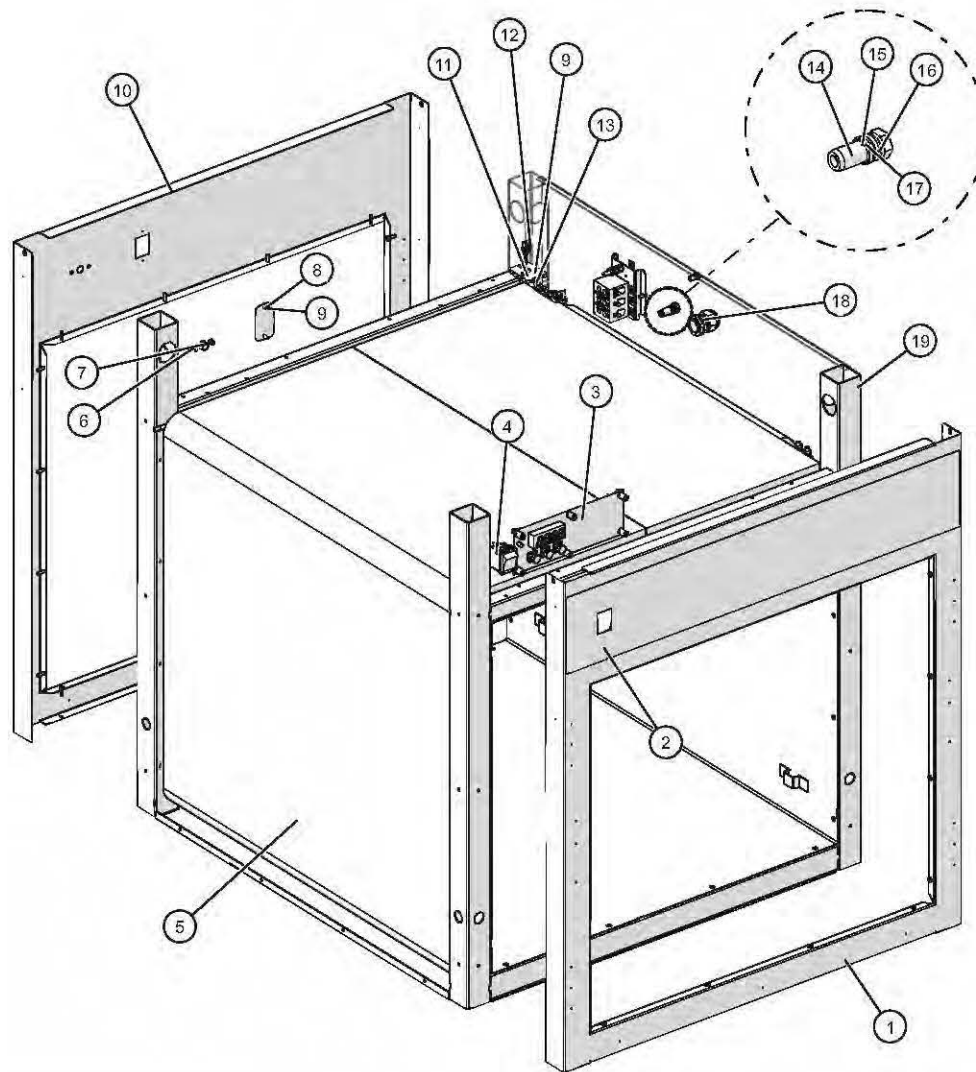
ID	Part No.	Description	Qty
1	1010394	BOTTOM PANEL, 750 SERIES	1
2	SC-22271	SCREW,M4x0.7X6MM PAN	8
3	5012840	750-S CABLE INSULATION ASSB	1

750-S Core Assembly, Reach-In, Simple



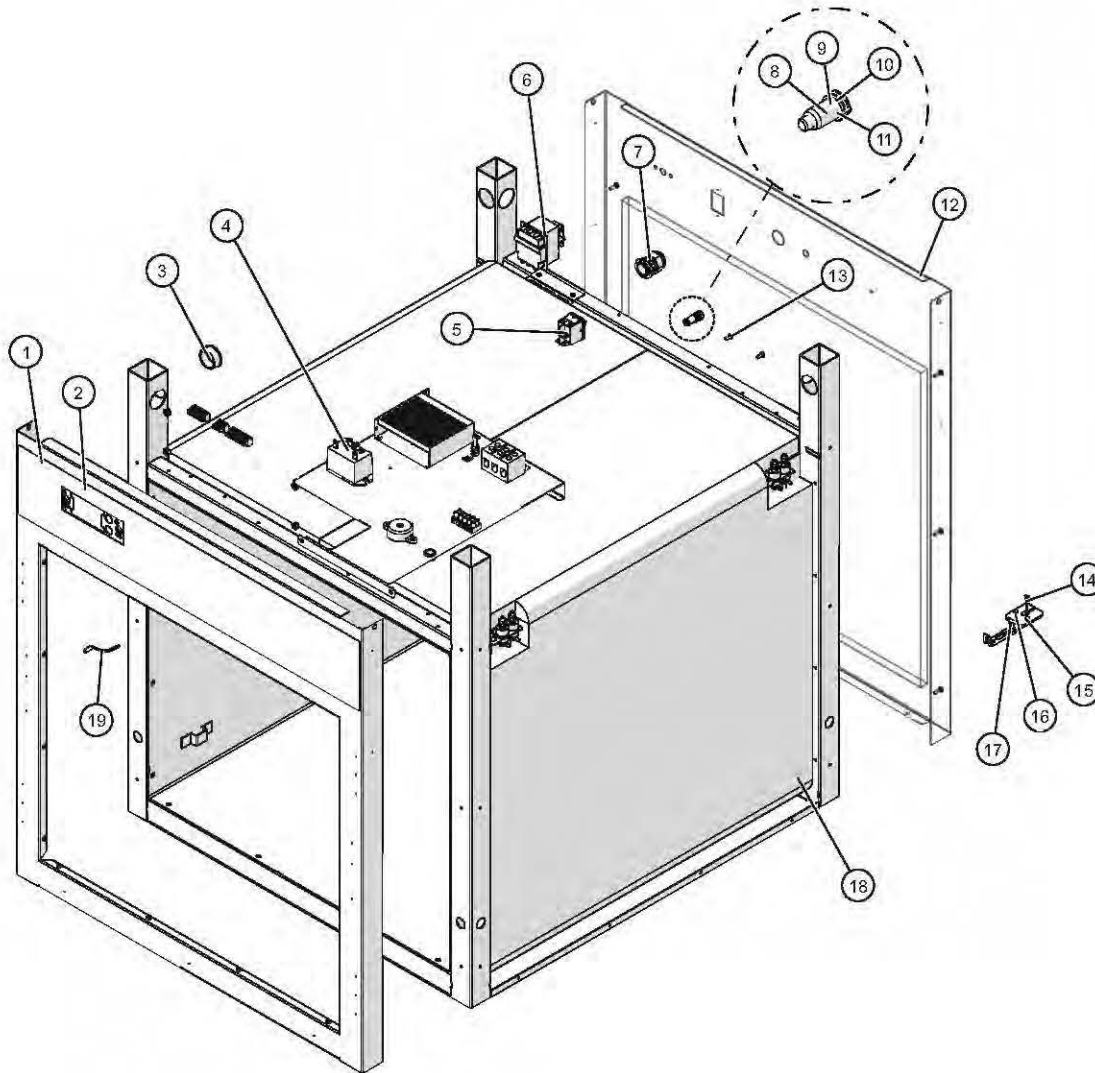
ID	Part No.	Description	Qty
1	5034349	TRIM, FRONT, ASSY, SIMPLE	1
2	SW-38665	SWITCH, ROCKER, DPST, 20A, 125V,	1
3	5034318	MOUNTING CONTROL ASSY, SIMPLE	1
4	5034317	CONTROL ASSY, SIMPLE, SINGLES	1
5	5014591	CAVITY PACKAGE 'A', REACH IN,	1
6	PG-28439	PLUG, DOME, .187" HOLE	2
7	PG-25574	3/8" HOLE PLUG	1
8	BU-3964	BUSHING, STRAIGHT, STRAIN RELIEF	1
9	5034348	PANEL, BACK, REACH IN, ASSEMBLY	1
10	WS-22297	WASHER, FLAT	2
11	SC-22924	HHCS, M6 X 20, W/NO MARKING	1
12	NU-22770	NUT, THREADED INSERT, M6	1
13	WS-22302	WASHER, SPLIT LOCK	2
14	SN-47162	SENSOR, 1000 OHM, 40" WIRE,	1
15	BK-29605	BLOCK, SENSOR, ELEC. CONTROL	1
16	1493	GUARD SENSOR, W/MW	1
17	SC-22271	M4 X 6MM PH PAN HD M/S .7	2
18	PE-47891	OVERLAY, DISPLAY, ELAN '10	1

750-S Core Assembly, Pass-Thru, Simple



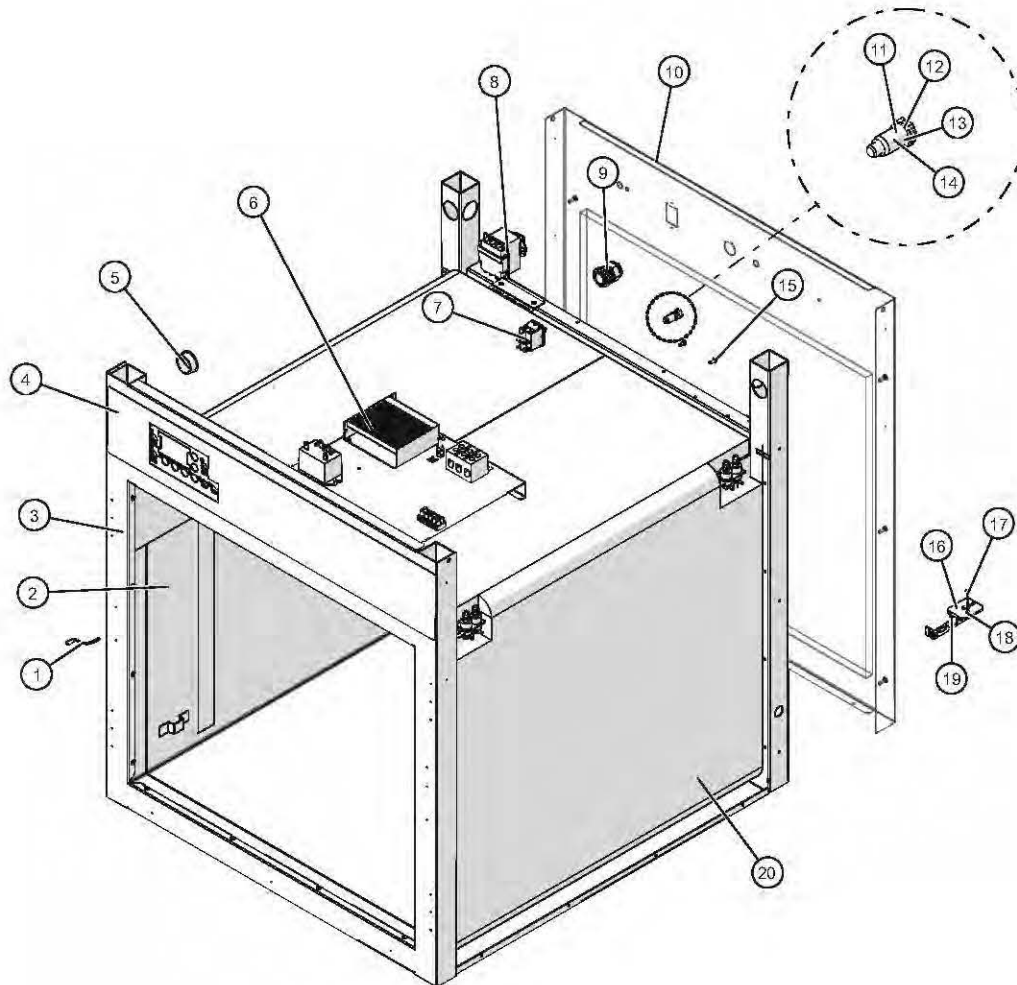
ID	Part No.	Description	Qty
1	5034349	TRIM,FRONT,ASSY,SIMPLE	1
2	PE-47891	OVERLAY, DISPLAY, ELAN '10	1
3	5034317	CONTROL ASSY,SIMPLE,SINGLES	1
4	SW-38665	SWITCH,ROCKER,DPST,20A,125V,	1
5	5014592	CAVITY PACKAGE 'B',PASS-THRU,	1
6	PG-28439	PLUG, DOME, .187" HOLE	2
7	PG-25574	3/8" HOLE PLUG	1
8	1011697	BREAKER SWITCH CUTOFF COVER	1
9	SC-22271	M4 X 6MM PH PAN HD M/S .7	4
10	5034352	TRIM,PASS-THROUGH,ASSB,BACK	1
11	BK-29605	BLOCK, SENSOR, ELEC. CONTROL	1
12	SN-47162	SENSOR, 1000 OHM, 40" WIRE,	1
13	1493	GUARD SENSOR,W/MW	1
14	NU-22770	NUT, THREADED INSERT, M6	1
15	WS-22297	WASHER, FLAT	2
16	SC-22924	HHCS, M6 X 20, W/NO MARKING	1
17	WS-22302	WASHER, SPLIT LOCK	2
18	BU-3964	BUSHING,STRAIGHT,STRAIN RELIEF	1
19	5015084	750 SERIES SS P/T SIDE PANEL SUBASSY	1

750-S Core Assembly, Reach-In, Deluxe



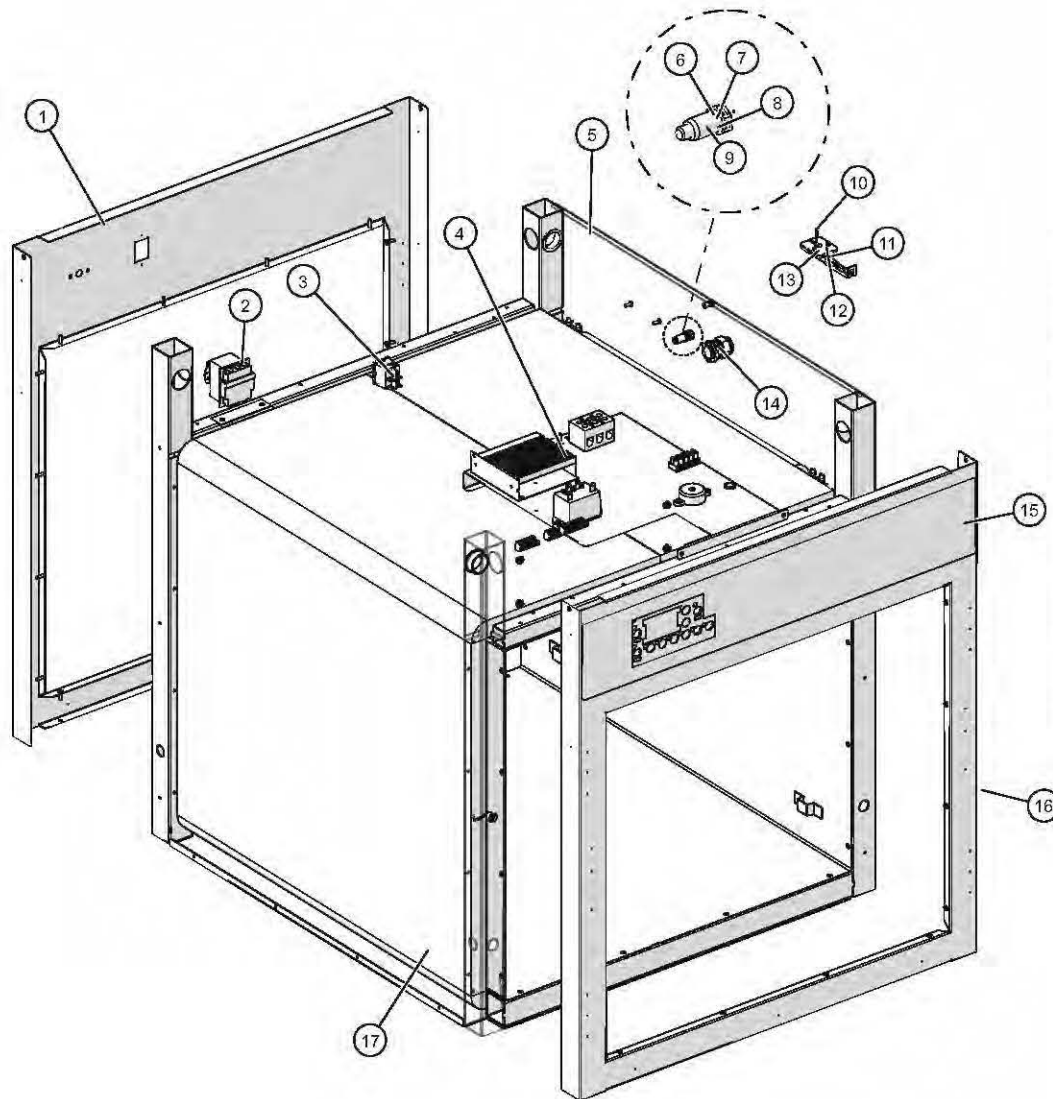
ID	Part No.	Description	Qty
1	5012944	750-S ELEC FRONT TRIM STUD	1
2	PE-27267	750-S ELECTRONIC OVERLAY	1
3	BU-3378	1 1/8" SNAP BUSHING	1
4	5034305	WARMER SERIES CHASSIS,DELUXE	1
5	SW-38665	SWITCH,ROCKER,DPST,20A,125V,	1
6	TT-33476	THERMOSTAT, 300F HI-LIMIT	1
7	BU-3964	BUSHING,STRAIGHT,STRAIN RELIEF	1
8	NU-22770	NUT, THREADED INSERT, M6	1
9	WS-22302	WASHER, SPLIT LOCK	2
10	WS-22297	WASHER, FLAT	2
11	SC-22924	HHCS, M6 X 20, W/NO MARKING	1
12	5034348	PANEL,BACK,REACH IN,ASSEMBLY	1
13	RI-38125	RIVET,SEALED,.125"	2
14	SN-38110	SENSOR, 100 OHM, 110" WIRE,	1
15	BK-29605	BLOCK, SENSOR, ELEC. CONTROL	1
16	SC-22271	M4 X 6MM PH PAN HD M/S .7	2
17	1493	GUARD SENSOR,W/MW	1
18	5014591	CAVITY PACKAGE 'A',REACH IN,	1
19	SW-33559	SWITCH, REED, SPST	1

750-S Core Assembly, Reach-In with Timer, Deluxe



ID	Part No.	Description	Qty
1	SW-33559	SWITCH, REED, SPST	1
2	BU-3419	3/8" BLACK HOLE BUSHING	1
3	5012944	750-S ELEC FRONT TRIM STUD	1
4	PE-28425	750-S ELECTRONIC W/ TIMER OVER	1
5	BU-3378	1 1/8" SNAP BUSHING	1
6	5034305	WARMER SERIES CHASSIS,DELUXE	1
7	SW-38665	SWITCH,ROCKER,DPST,20A,125V,	1
8	TT-33476	THERMOSTAT, 300F HI-LIMIT	1
9	BU-3964	BUSHING,STRAIGHT,STRAIN RELIEF	1
10	5034348	PANEL,BACK,REACH IN,ASSEMBLY	1
11	WS-22302	WASHER, SPLIT LOCK	4
12	WS-22297	WASHER, FLAT	4
13	SC-22924	HHCS, M6 X 20, W/NO MARKING	2
14	NU-22770	NUT, THREADED INSERT, M6	2
15	RI-38125	RIVET,SEALED,.125"	2
16	SC-22271	M4 X 6MM PH PAN HD M/S .7	2
17	SN-38110	SENSOR, 100 OHM, 110" WIRE,	1
18	BK-29605	BLOCK, SENSOR, ELEC. CONTROL	1
19	1493	GUARD SENSOR,W/MW	1
20	5014591	CAVITY PACKAGE 'A',REACH IN,	1

750-S Core Assembly, Pass-Thru with Timer, Deluxe



ID	Part No.	Description	Qty
1	5034352	TRIM,PASS-THROUGH,ASSB,BACK	1
2	TT-33476	THERMOSTAT, 300F HI-LIMIT	1
3	SW-38665	SWITCH,ROCKER,DPST,20A,125V,	1
4	5034305	WARMER SERIES,DELUXE	1
5	5015084	750 SERIES SS P/T SIDE PANEL SUBASSY	1
6	WS-22302	WASHER, SPLIT LOCK	2
7	WS-22297	WASHER, FLAT	2
8	SC-22924	HHCS, M6 X 20, W/NO MARKING	1
9	NU-22770	NUT, THREADED INSERT, M6	1
10	SN-38110	SENSOR, 100 OHM, 110" WIRE,	1
11	1493	GUARD SENSOR,W/MW	1
12	SC-22271	SCREW,M4x0.7X6MM PAN	6
13	BK-29605	BLOCK, SENSOR, ELEC. CONTROL	1
14	BU-3964	BUSHING,STRAIGHT,STRAIN RELIEF	1
15	PE-28425	750-S ELECTRONIC W/ TIMER OVER	1
16	5012944	750-S ELEC FRONT TRIM STUD	1
17	5014592	CAVITY PACKAGE 'B',PASS-THRU,	1

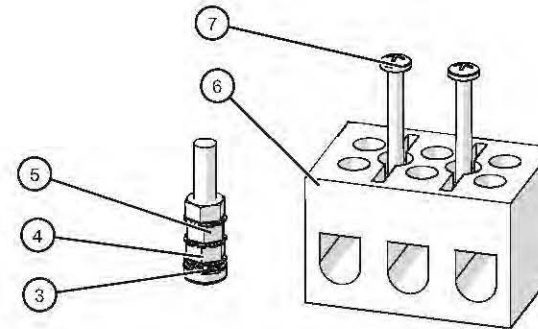
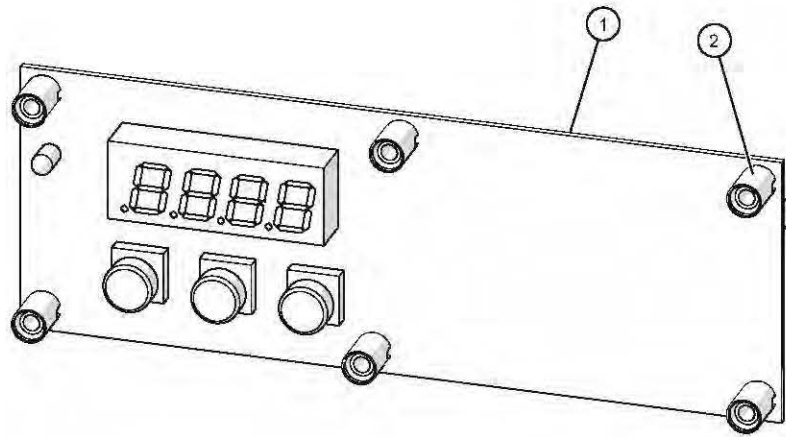
Heating Wire Service Kits

Cable Heating Kit > (One kit required per compartment)		#4874 (500, 750, 1000)	#4881 (1200 - 4000W)	#4878 (1200 - all but 4000W)
Part No.	Description	Qty	Qty	Qty
CB-3045	Cable Heating Element	—	210 feet (6401cm)	90 feet (2591cm)
CB-3044	Cable Heating Element	120 feet (3658cm)	—	—
CR-3226	Ring Connector	4	12	4
IN-3488	Insulation Corner	1 foot (30,5cm)	1 foot (30,5cm)	1 foot (30,5cm)
BU-3105	Shoulder Bushing	4	12	4
BU-3106	Cup Bushing	4	12	4
ST-2439	Stud	4	12	4
NU-2215	Hex Nut	8	24	8
SL-3063	Insulating Sleeve	4	12	4
TA-3540	Electrical Tape	1 roll	1 roll	1 roll

For heating wire replacement instructions, scan the QR code below.

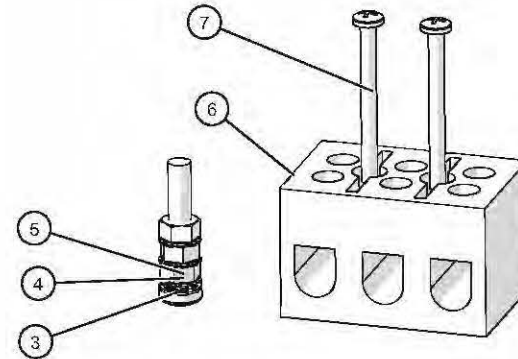
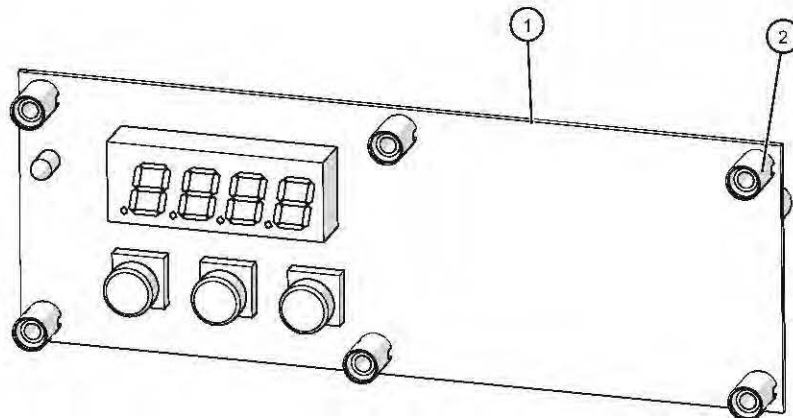


750-S Chassis Assembly, Manual 120V



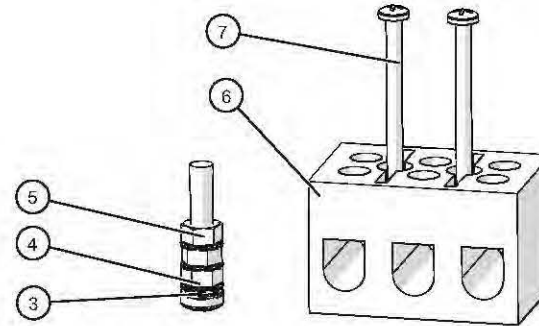
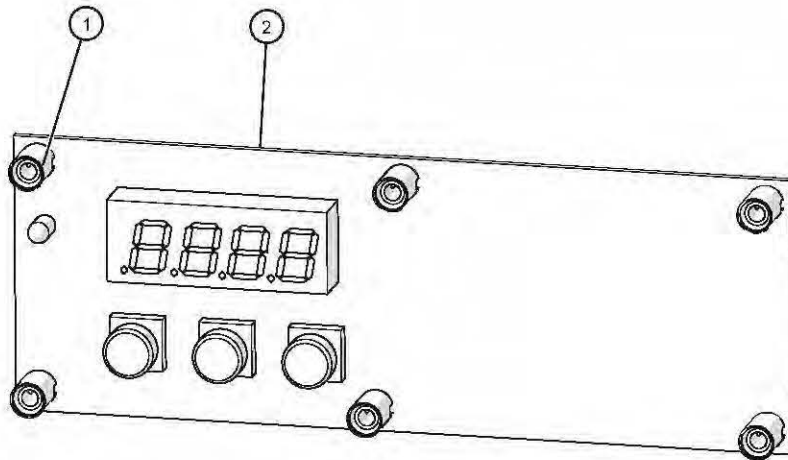
ID	Part No.	Description	Qty
1	CC-34970	ELAN WARMER CONTROL	1
2	SP-29392	SPACER, SNAP-IN, 7/16"	6
3	WS-2467	WASHER, INT. LOCK	1
4	SC-38128	SCREW,PAN PH, METRIC, M5	1
5	NU-36234	NUT, M5, KEPS	3
6	BK-3019	T-BLOCK	1
7	SC-47136	SCREW,6-32X1-1/2" PAN	2

750-S Chassis Assembly, Manual 208/240V



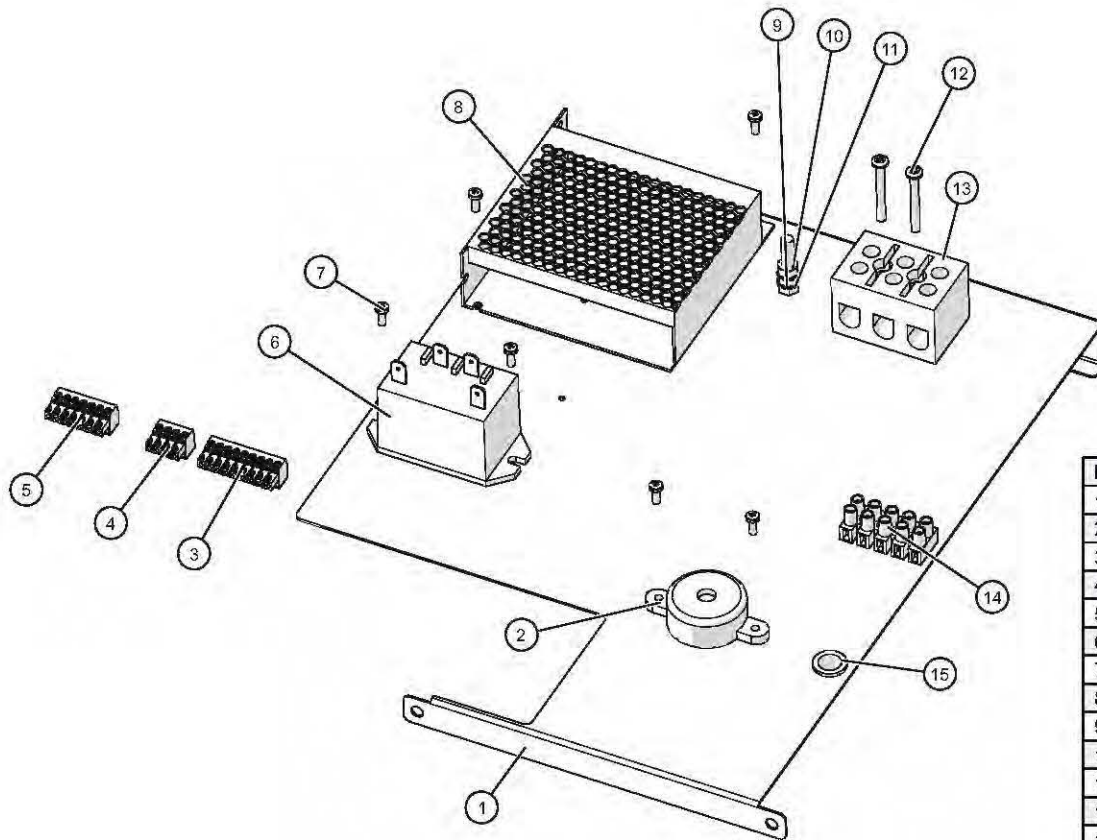
ID	Part No.	Description	Qty
1	CC-34970	ELAN WARMER CONTROL	1
2	SP-29392	SPACER, SNAP-IN, 7/16"	6
3	WS-2467	WASHER, INT. LOCK	1
4	SC-38128	SCREW,PAN PH, METRIC, M5	1
5	NU-36234	NUT, M5, KEPS	3
6	BK-3019	T-BLOCK	1
7	SC-47136	SCREW,6-32X1-1/2" PAN	2

750-S Chassis Assembly, Manual 230V



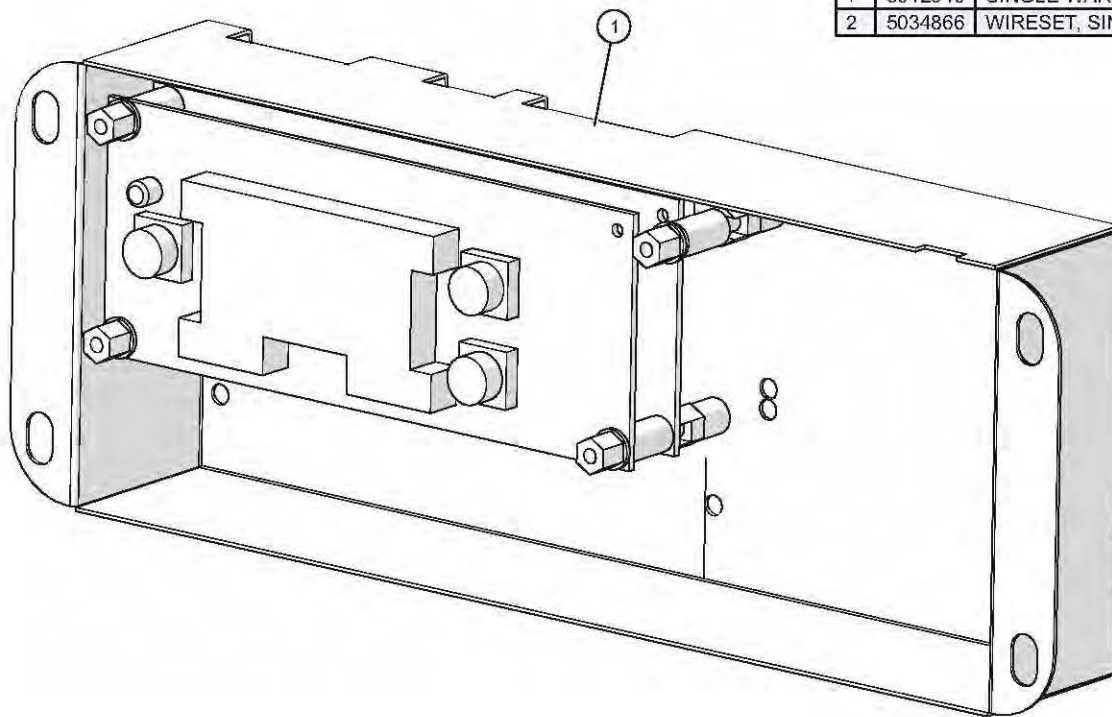
ID	Part No.	Description	Qty
1	SP-29392	SPACER, SNAP-IN, 7/16"	6
2	CC-34970	ELAN WARMER CONTROL	1
3	WS-2467	WASHER, INT. LOCK	1
4	SC-38128	SCREW,PAN PH, METRIC, M5	1
5	NU-36234	NUT, M5, KEPS	3
6	BK-3019	T-BLOCK	1
7	SC-47136	SCREW,6-32X1-1/2" PAN	2

750-S Chassis Assembly, Deluxe 230V



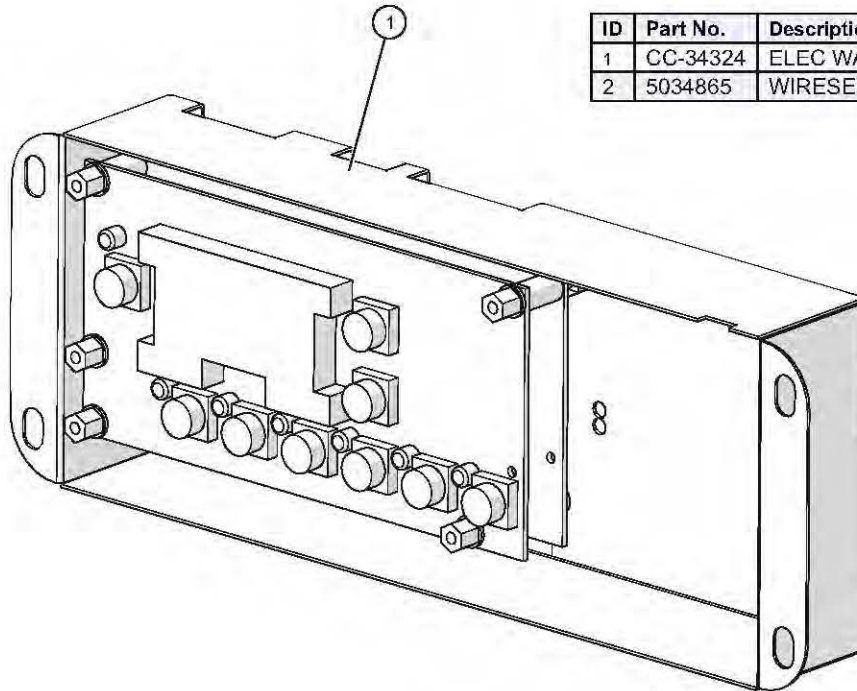
ID	Part No.	Description	Qty
1	1011531	WARMER SERIES ELEC CHASSIS	1
2	BP-3567	BEEPER, SOLID STATE, 1.5-20V	1
3	CR-33718	CONNECTOR 9 PIN	1
4	CR-33763	CONNECTOR 4 PIN	1
5	CR-33761	CONNECTOR, 7 PIN	1
6	RL-33558	RELAY, SPST 30A @ 277 VAC 12VDC	1
7	SC-22268	SCREW, M3x0.5X8MM PAN	6
8	BA-38586	BOARD, POWER SUPPLY, 12V	1
9	SC-38128	SCREW, PAN PH, METRIC, M5	1
10	NU-36234	NUT, M5, KEPS	3
11	WS-2467	WASHER, INT. LOCK	1
12	SC-2365	SCREW, 6-32X1-1/4, NC PHILLIPS	2
13	BK-3019	T-BLOCK	1
14	TM-33560	TERMINAL, STRIP, 5 CIRCUIT, UL, VDE	1
15	BU-3006	1/2" HOLE BUSHING	1

Control Assembly, Deluxe with Probe



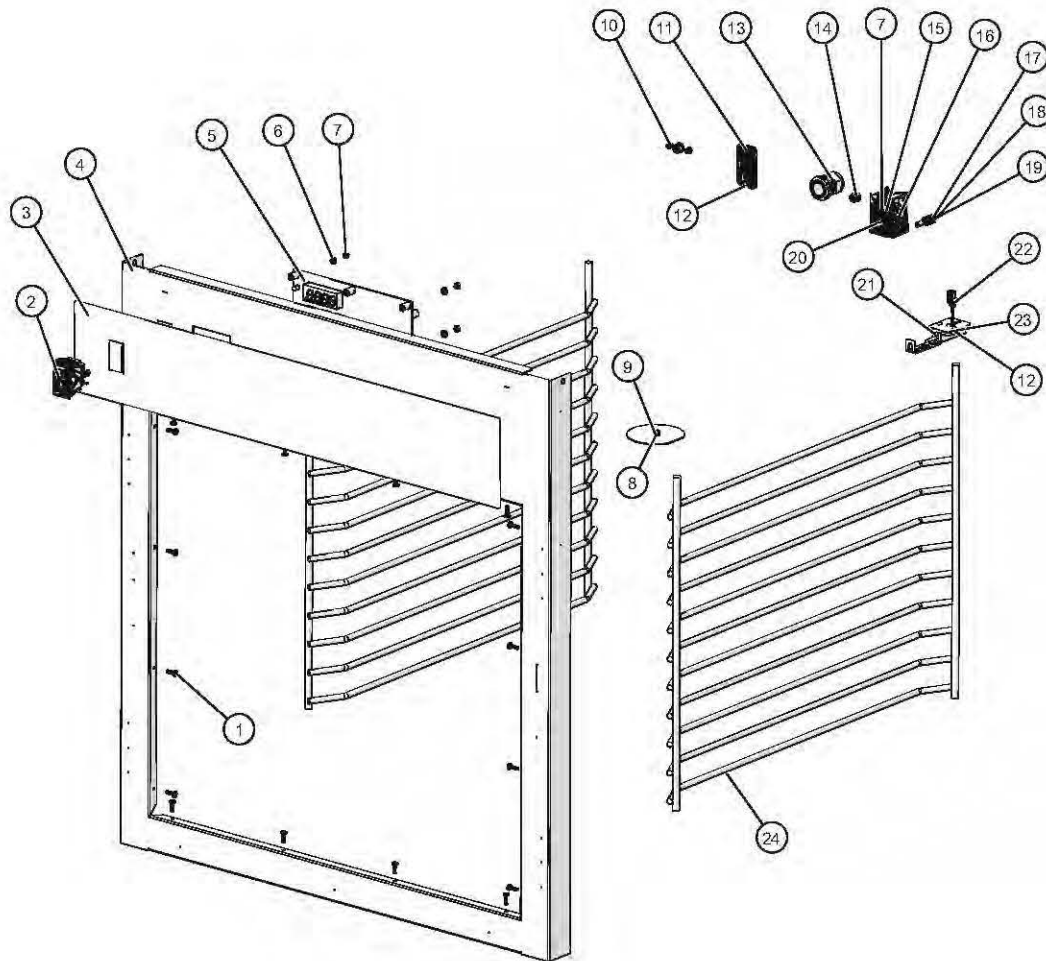
ID	Part No.	Description	Qty
1	5012946	SINGLE WARMER CONTROL	1
2	5034866	WIRESET, SINGLE CAVITY WARMER (not shown)	1

Control Assembly, Deluxe with Timer



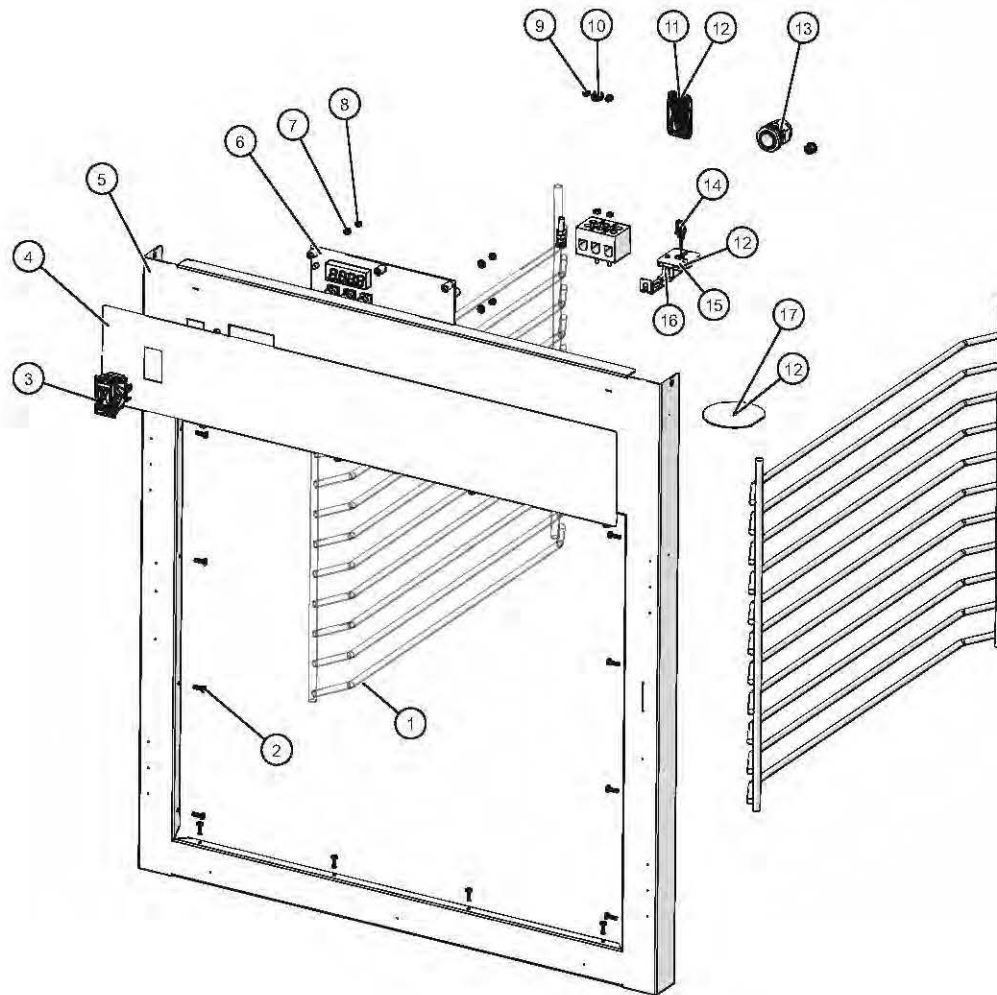
ID	Part No.	Description	Qty
1	CC-34324	ELEC WARMER CONTROL W/ TIMER	1
2	5034865	WIRESET, SINGLE CAVITY WARMER (not shown)	1

750-S Bonnet Package "A", Manual 120V



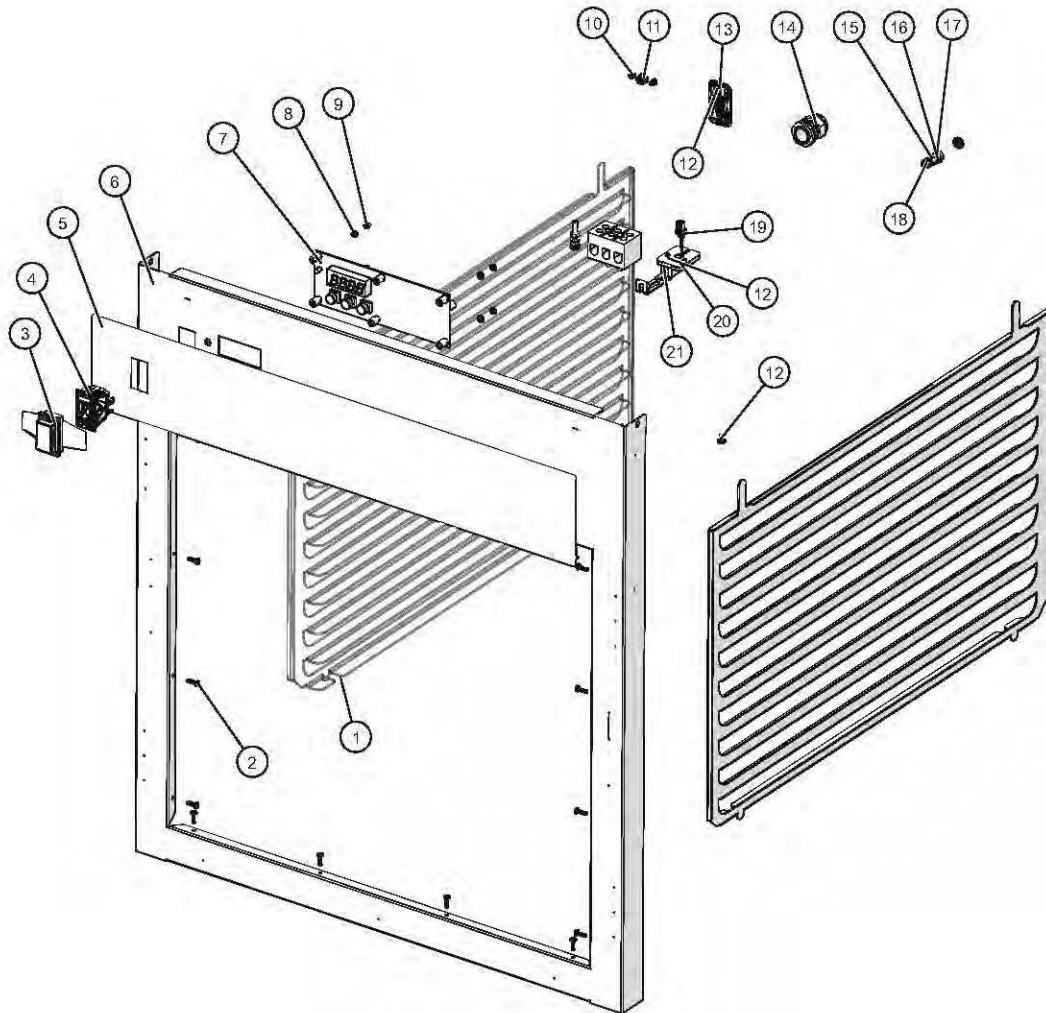
ID	Part No.	Description	Qty
1	RI-27108	RIVET, SEALED, 0.125" x 0.45"	16
2	SW-34769	SWITCH,ROCKER,125-277V,20A	1
3	PE-29398	PANEL, OVERLAY, 750-S ELAN 2010	1
4	5012940	750-S ELAN FRONT TRIM STUD	1
5	5012587	1000-S MANUAL 120V,ELE CHASSIS	1
6	WS-23148	WASHER, 6-32, FLAT, NYL	4
7	NU-2361	NUT, 6-32 HEX, S/S	6
8	SC-22271	SCREWS,M4-0.7X6MM PHIL	1
9	1006871	NON-PRODUCT PROBE SEAL	1
10	PG-28439	PLUG, DOME, .187" HOLE	2
11	1011697	BREAKER SWITCH CUTOOUT COVER	1
12	SC-22271	SCREWS,M4-0.7X6MM PHIL	4
13	BU-3964	BUSHING,STRAIGHT,STRAIN RELIEF	1
14	PG-25574	3/8" HOLE PLUG	2
15	BK-3019	T-BLOCK	1
16	SC-47136	SCREW,6-32X1-1/2" PAN	2
17	SC-38128	SCREW,PAN PH, METRIC, M5	1
18	WS-2467	WASHER, INT. LOCK, #10, 410 SST	1
19	NU-36234	NUT, M5, KEPS	3
20	WS-22300	WASHER, SPLIT LOCK, M4, 18-8 SST	2
21	1493	GUARD SENSOR,W/MW	1
22	SN-38111	SENSOR, 1000 OHM, 110" WIRE,	1
23	BK-29605	BLOCK, SENSOR, ELEC. CONTROL	1
24	SR-28404	SIDE RACK 750-S CHROME PLATED	2

750-S Bonnet Package "B", Manual 208V-240V



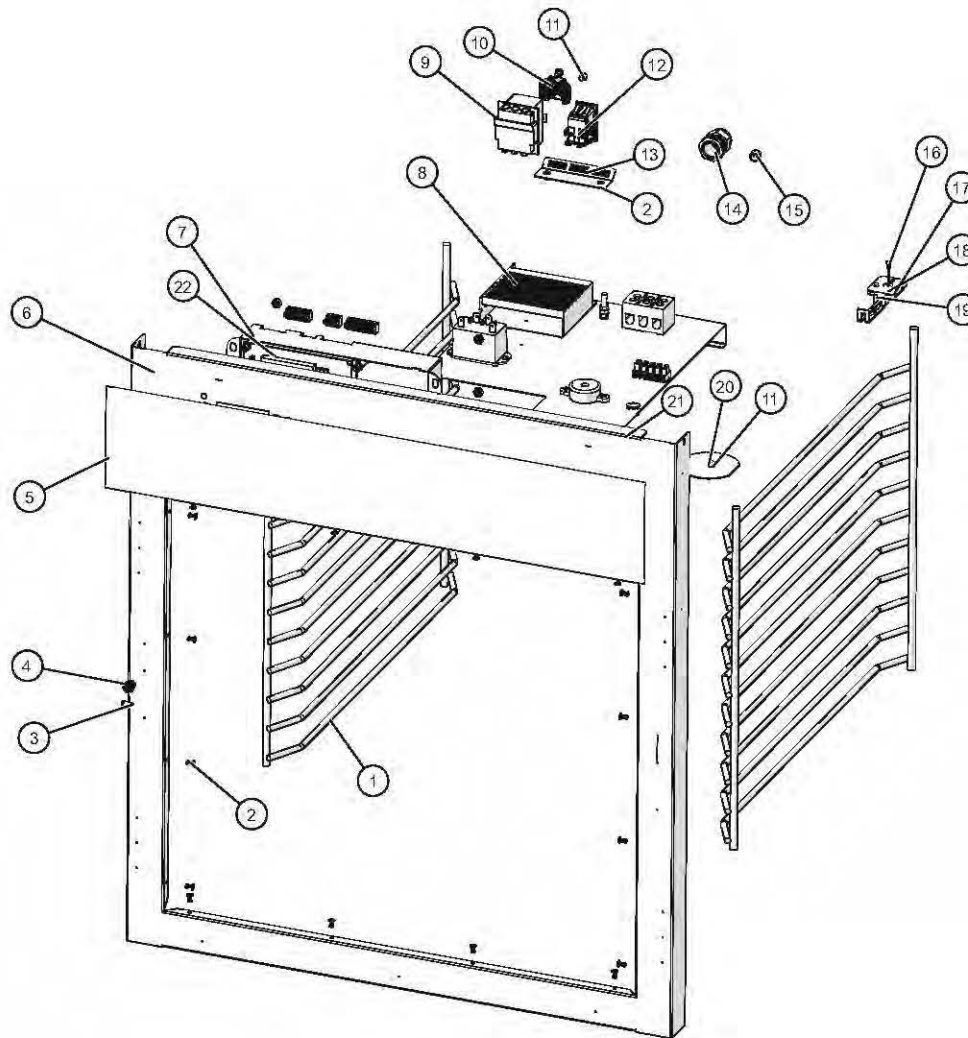
ID	Part No.	Description	Qty
1	SR-28404	SIDE RACK 750-S CHROME PLATED	2
2	RI-27108	RIVET, SEALED	16
3	SW-34769	SWITCH,ROCKER,125-277V,20A	1
4	PE-29398	PANEL, OVERLAY, 750-S ELAN 2010	1
5	5012940	750-S ELAN FRONT TRIM STUD	1
6	5012588	1000-S MANUAL 208/240V,	1
7	WS-23148	WASHER, 6-32, FLAT, NYL	4
8	NU-2361	NUT, 6-32 HEX, S/S	6
9	PG-28439	PLUG, DOME,.187" HOLE	2
10	PG-25574	3/8" HOLE PLUG	2
11	1011697	BREAKER SWITCH CUTOUT COVER	1
12	SC-22271	SCREWS,M4-0.7X6MM PHIL	5
13	BU-3964	BUSHING,STRAIGHT,STRAIN RELIEF	1
14	SN-38111	SENSOR, 1000 OHM, 110" WIRE,	1
15	BK-29605	BLOCK, SENSOR, ELEC. CONTROL	1
16	1493	GUARD SENSOR,W/MW	1
17	1006871	NON-PRODUCT PROBE SEAL	1

750-S Bonnet Package "C", Manual 230V



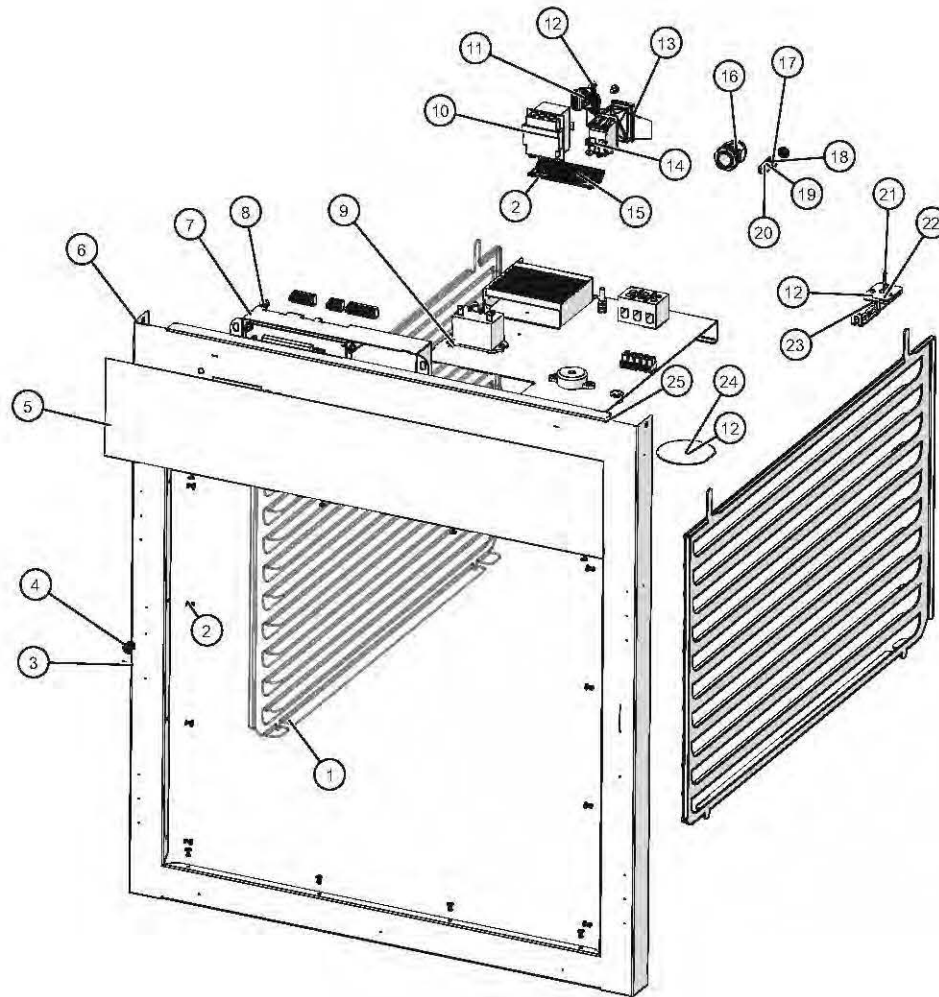
ID	Part No.	Description	Qty
1	1010813	PAN SLIDE, 750 INTERNATIONAL	2
2	RI-27108	RIVET, SEALED, 0.125" x 0.45"	16
3	CV-38297	COVER, IPX RATED, SW-34769	1
4	SW-34769	SWITCH,ROCKER,125-277V,20A	1
5	PE-29398	PANEL, OVERLAY, 750-S ELAN 2010	1
6	5012940	750-S ELAN FRONT TRIM STUD	1
7	5012589	1000-S MANUAL230V, ELE CHASSIS	1
8	WS-23148	WASHER, 6-32, FLAT, NYL	4
9	NU-2361	NUT, 6-32 HEX, S/S	6
10	PG-28439	PLUG, DOME,, 187" HOLE	2
11	PG-25574	3/8" HOLE PLUG	1
12	SC-22271	SCREWS,M4-0.7X6MM PHIL	5
13	1011697	BREAKER SWITCH CUTOUT COVER	1
14	BU-3964	BUSHING,STRAIGHT,STRAIN RELIEF	1
15	WS-22302	WASHER, SPLIT LOCK, M6, 18-8 SST	2
16	SC-22924	HHCS, M6 X 20, W/NO MARKING	1
17	WS-22297	WASHER, FLAT, M6, 18-8 SST	2
18	NU-22770	NUT, THREADED INSERT, M6	1
19	SN-38111	SENSOR, 1000 OHM, 110" WIRE,	1
20	BK-29605	BLOCK, SENSOR, ELEC. CONTROL	1
21	1493	GUARD SENSOR,W/MW	1

750-S Bonnet Package "D", Electronic 120V



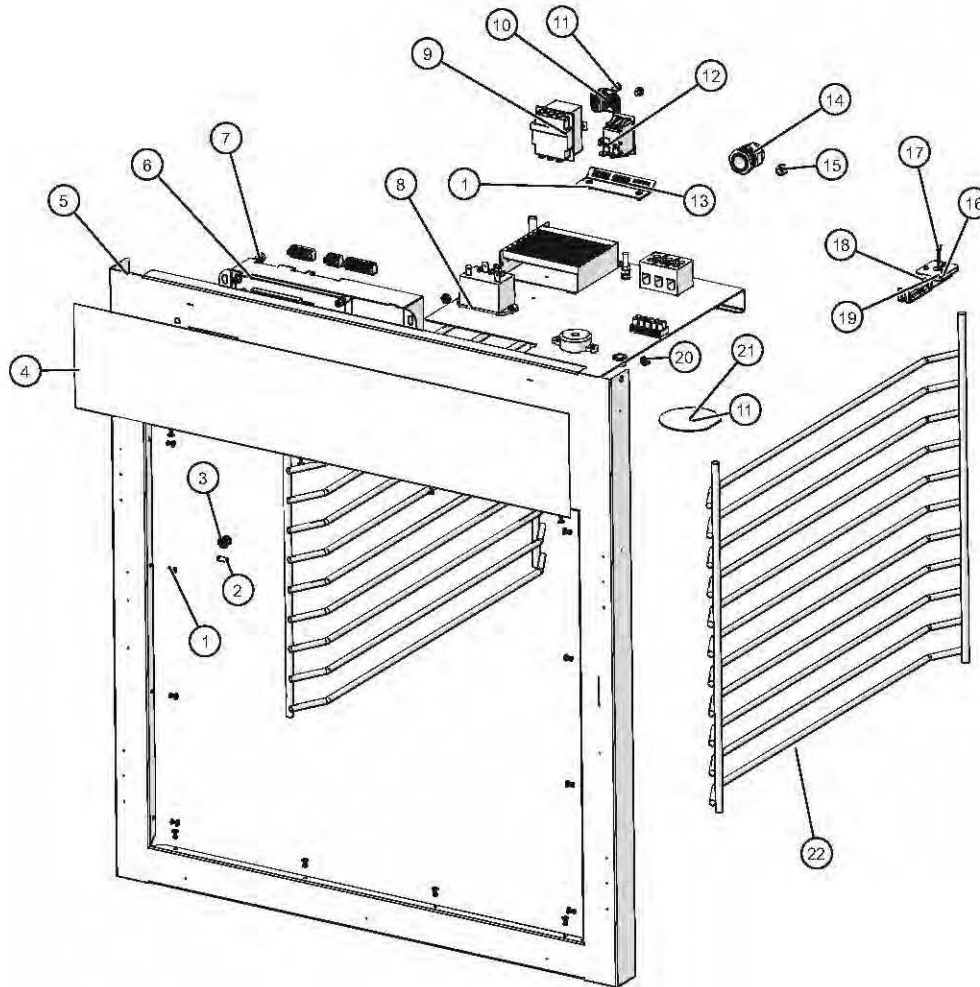
ID	Part No.	Description	Qty
1	SR-28404	SIDE RACK 750-S CHROME PLATED	2
2	RI-2100	RIVET,BLIND,#44,STNLS	18
3	SW-33559	SWITCH, REED, SPST	1
4	BU-3419	3/8" BLACK HOLE BUSHING	1
5	PE-27267	750-S OVERLAY, ELEC	1
6	5012944	750-S ELEC FRONT TRIM STUD	1
7	CC-34322	ELECTRONIC WARMER CONTROL	1
8	5012604	1000-S ELEC 120V, ELEC CHASSIS	1
9	TT-33476	THERMOSTAT, 300F HI-LIMIT	1
10	1003936	HI-LIMIT PROTECTION COVER	1
11	SC-22271	SCREWS, M4-0.7X6MM PHIL	3
12	SW-34769	SWITCH,ROCKER,125-277V,20A	1
13	1010119	HI-LIMIT BULB HOLDER	1
14	BU-3964	BUSHING,STRAIGHT,STRAIN RELIEF	1
15	PG-25574	3/8" HOLE PLUG	1
16	SN-38110	SENSOR, 100 OHM, 110" WIRE,	1
17	SC-22271	SCREW, M4x0.7X6MM PAN	2
18	BK-29605	BLOCK, SENSOR, ELEC. CONTROL	1
19	1493	GUARD SENSOR, W/MW	1
20	1006871	NON-PRODUCT PROBE SEAL	1
21	NU-2296	NUT, HEX #8-32	2
22	NU-26526	NUT, #8-32 UNC KEPS ZP	4

750-S Bonnet Package "F", Electronic 230V



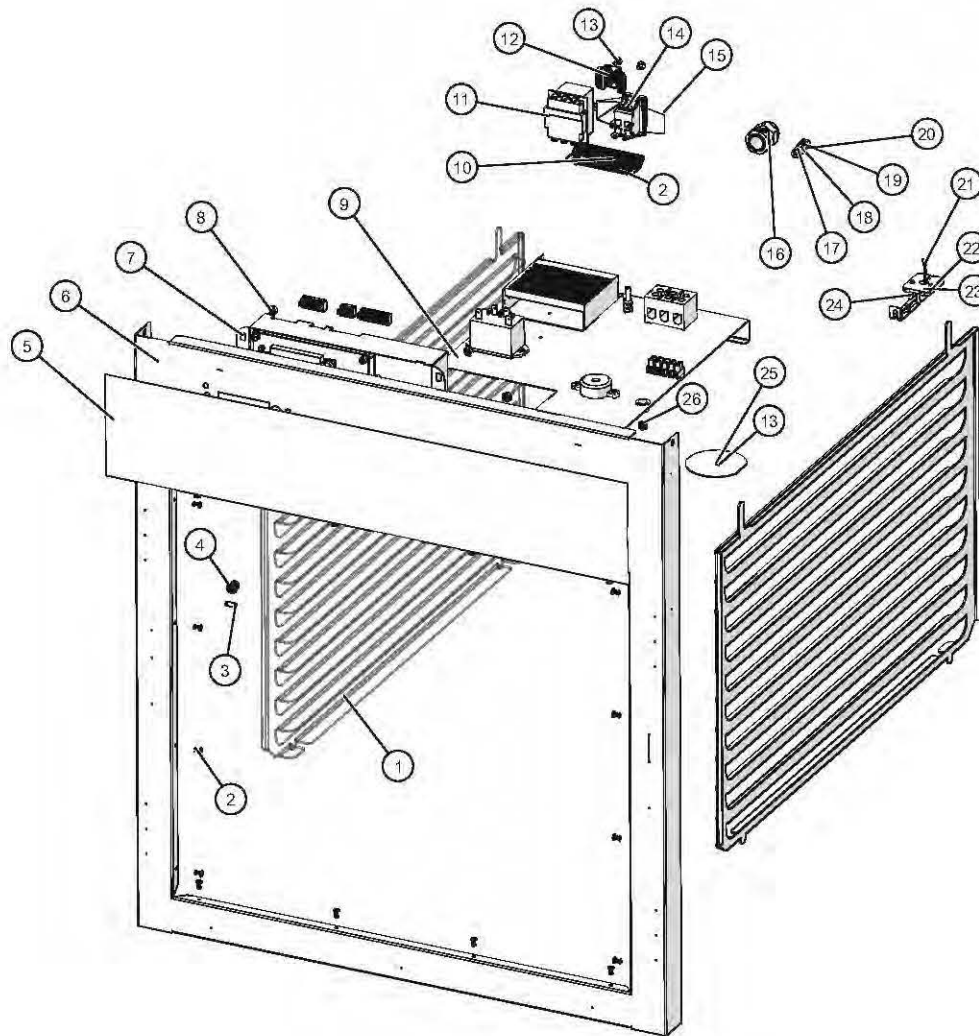
ID	Part No.	Description	Qty
1	1010813	PAN SLIDE, 750 (09)	2
2	RI-2100	RIVET,BLIND,#44,STNLS	18
3	SW-33559	SWITCH, REED, SPST	1
4	BU-3419	3/8" BLACK HOLE BUSHING	1
5	PE-27267	750-S OVERLAY, ELEC	1
6	5012944	750-S ELEC FRONT TRIM ASSY	1
7	CC-34322	ELECTRONIC WARMER CONTROL	1
8	NU-26526	NUT, #8-32 UNC KEPS ZP	4
9	5012606	1000-S ELEC 230V, ELEC CHASSIS	1
10	TT-33476	THERMOSTAT, 300F HI-LIMIT	1
11	1003936	HI-LIMIT PROTECTION COVER	1
12	SC-22271	SCREW,M4x0.7X6MM PAN	5
13	CV-38297	COVER, IPX RATED, SW-34769	1
14	SW-34769	SWITCH,ROCKER,125-277V,20A	1
15	1010119	HI-LIMIT BULB HOLDER	1
16	BU-3964	BUSHING,STRAIGHT,STRAIN RELIEF	1
17	SC-22924	HHCS, M6 X 20, W/NO MARKING	1
18	WS-22297	WASHER, FLAT, M6, 18-8 SST	2
19	WS-22302	WASHER, SPLIT LOCK, M6, 18-8 SST	2
20	NU-22770	NUT, THREADED INSERT, M6	1
21	SN-38110	SENSOR, 100 OHM, 110" WIRE,	1
22	BK-29605	BLOCK, SENSOR, ELEC. CONTROL	1
23	1493	GUARD SENSOR,W/MW	1
24	1006871	NON-PRODUCT PROBE SEAL	1
25	NU-2296	NUT, HEX #8-32	2

750-S Bonnet Package "G", Electronic with Timer, 120V



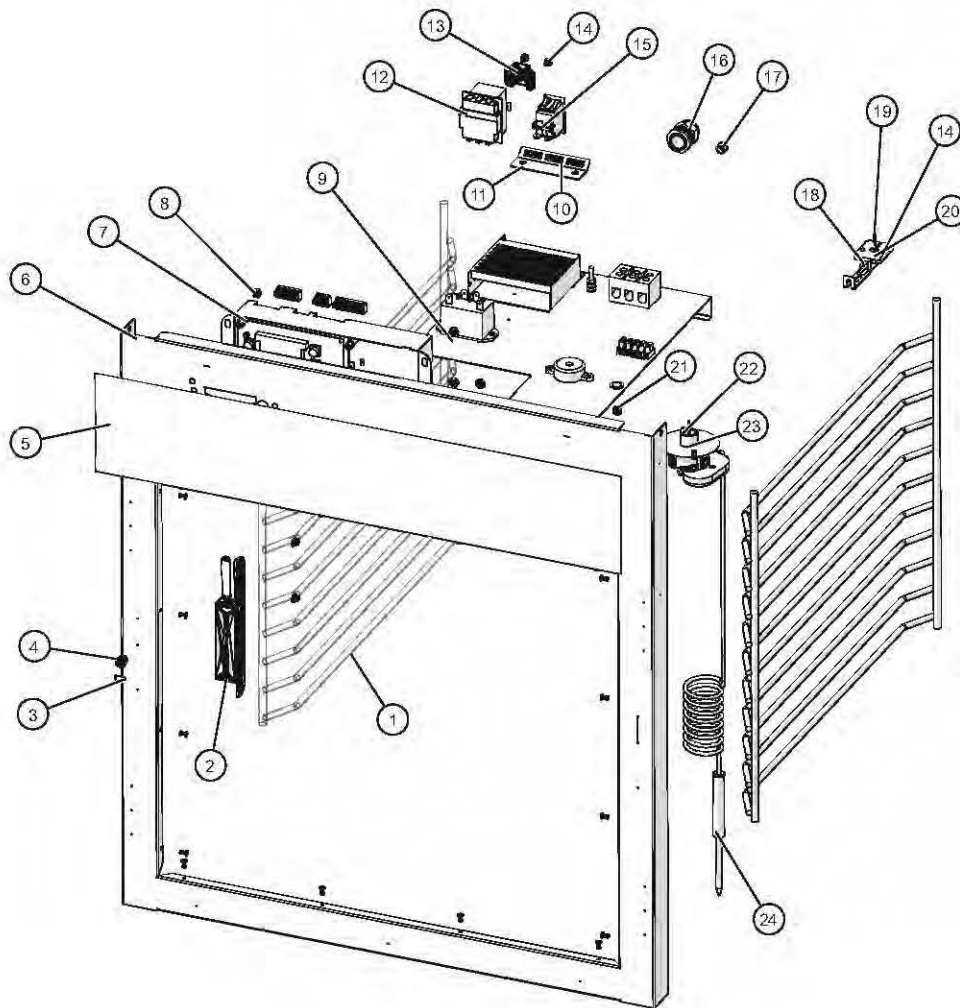
ID	Part No.	Description	Qty
1	RI-2100	RIVET,BLIND #44,STNLS	18
2	SW-33559	SWITCH, REED, SPST	1
3	BU-3419	3/8" BLACK HOLE BUSHING	1
4	PE-28425	750-S ELEC CNTRL OVERLAY W/TIMER	1
5	5012944	750-S ELEC FRONT TRIM STUD	1
6	CC-34324	ELEC WARMER CONTROL W/ TIMER	1
7	NU-26526	NUT, #8-32 UNC KEPS ZP	4
8	5012604	ELEC CHASSIS 120V	1
9	TT-33476	THERMOSTAT, 300F HI-LIMIT	1
10	1003936	HI-LIMIT PROTECTION COVER	1
11	SC-22271	SCREWS,M4-0.7X6MM PHIL	3
12	SW-34769	SWITCH,ROCKER,125-277V,20A	1
13	1010119	HI-LIMIT BULB HOLDER	1
14	BU-3964	BUSHING,STRAIGHT,STRAIN RELIEF	1
15	PG-25574	3/8" HOLE PLUG	1
16	SC-22271	SCREW,M4x0.7X6MM PAN	2
17	SN-38110	SENSOR, 100 OHM, 110" WIRE,	1
18	1493	GUARD SENSOR,W/MW	1
19	BK-29605	BLOCK, SENSOR, ELEC. CONTROL	1
20	NU-2296	NUT, HEX #8-32	2
21	1006871	NON-PRODUCT PROBE SEAL	1
22	SR-28404	SIDE RACK 750-S CHROME PLATED	2

750-S Bonnet Package "I", Electronic with Timer, 230V



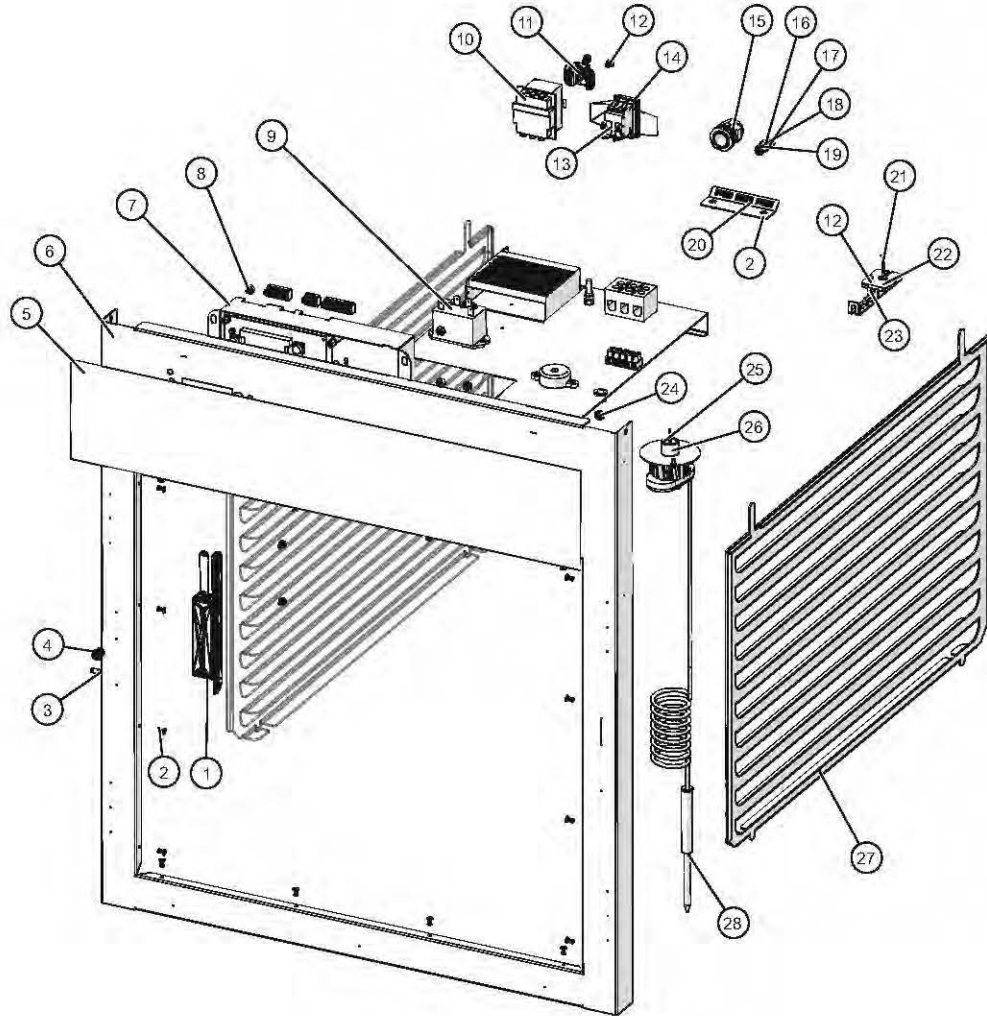
ID	Part No.	Description	Qty
1	1010813	PAN SLIDE, 750 (09)	2
2	RI-2100	RIVET,BLIND,#44,STNLS	18
3	SW-33559	SWITCH, REED, SPST	1
4	BU-3419	3/8" BLACK HOLE BUSHING	1
5	PE-28425	750-S ELEC CNTRL OVERLAY W/TIMER	1
6	5012944	750-S ELEC FRONT TRIM STUD	1
7	CC-34324	ELEC WARMER CONTROL W/ TIMER	1
8	NU-26526	NUT, #8-32 UNC KEPS ZP	4
9	5012606	1000-S ELEC 230V, ELEC CHASSIS	1
10	1010119	HI-LIMIT BULB HOLDER	1
11	TT-33476	THERMOSTAT, 300F HI-LIMIT	1
12	1003936	HI-LIMIT PROTECTION COVER	1
13	SC-22271	SCREW,M4x0.7X6MM PAN	3
14	SW-34769	SWITCH,ROCKER,125-277V,20A	1
15	CV-38297	COVER, IPX RATED, SW-34769	1
16	BU-3964	BUSHING,STRAIGHT,STRAIN RELIEF	1
17	NU-22770	NUT, THREADED INSERT, M6	1
18	WS-22302	WASHER, SPLIT LOCK	2
19	WS-22297	WASHER, FLAT	2
20	SC-22924	HHCS, M6 X 20, W/NO MARKING	1
21	SN-38110	SENSOR, 100 OHM, 110" WIRE,	1
22	SC-22271	SCREW,M4x0.7X6MM PAN	2
23	BK-29605	BLOCK, SENSOR, ELEC. CONTROL	1
24	1493	GUARD SENSOR,W/MW	1
25	1006871	NON-PRODUCT PROBE SEAL	1
26	NU-2296	NUT, HEX #8-32	2

750-S Bonnet Package "J", Electronic with Probe, 120V



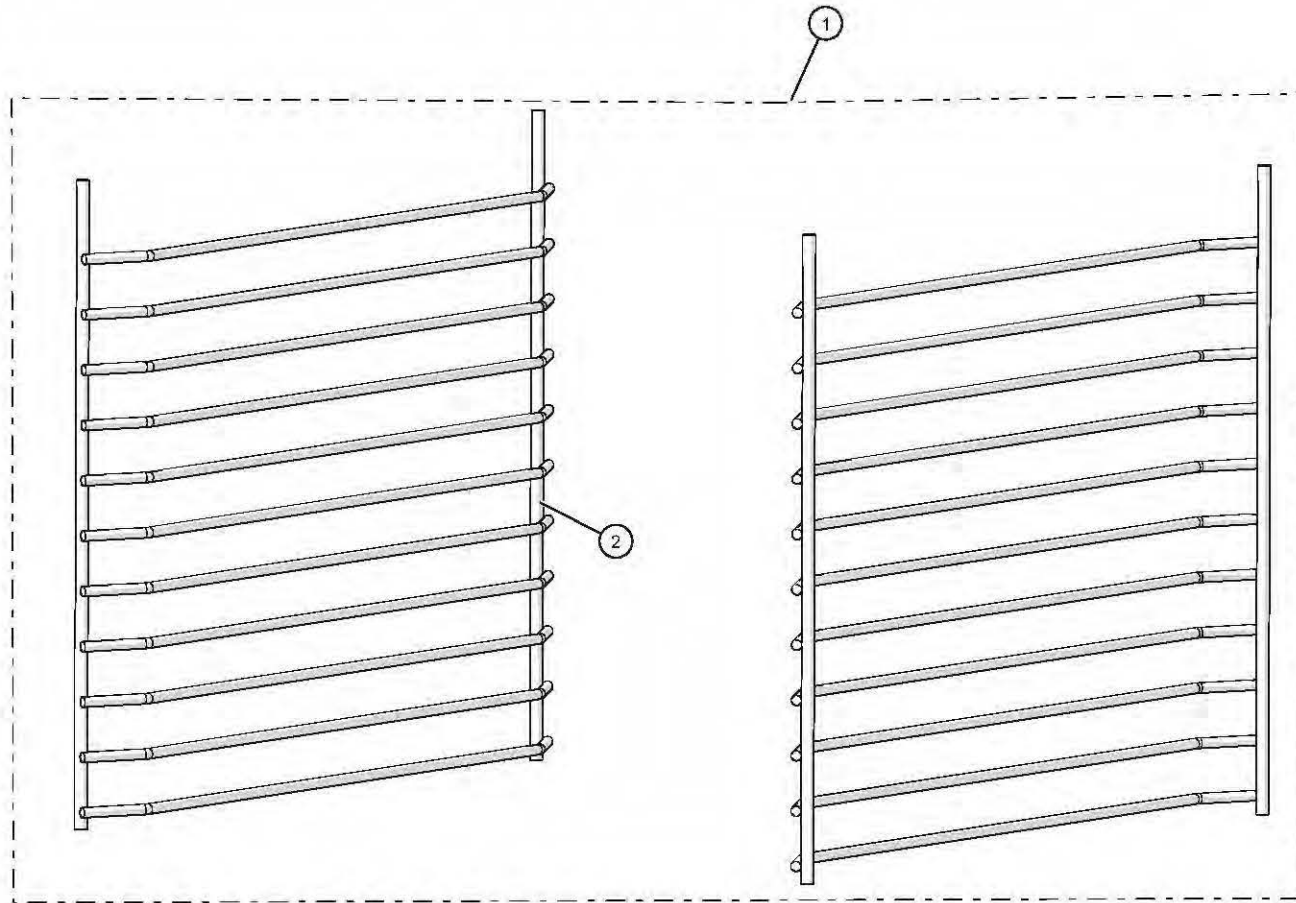
ID	Part No.	Description	Qty
1	SR-28404	SIDE RACK 750-S CHROME PLATED	2
2	13239	PROBE HOLDER, TH/III	1
3	SW-33559	SWITCH, REED, SPST	1
4	BU-3419	3/8" BLACK HOLE BUSHING	1
5	PE-27267	750-S OVERLAY, ELEC	1
6	5012944	750-S ELEC FRONT TRIM STUD	1
7	5012946	SINGLE WARMER CONTROL	1
8	NU-26526	NUT, #8-32 UNC KEPS ZP	4
9	5012604	WARMER SERIES ELEC 120V,	1
10	1010119	HI-LIMIT BULB HOLDER	1
11	RI-2100	RIVET,BLIND,#44,STNLS	18
12	TT-33476	THERMOSTAT, 300F HI-LIMIT	1
13	1003936	HI-LIMIT PROTECTION COVER	1
14	SC-22271	SCREW,M4x0.7X6MM PAN	8
15	SW-34769	SWITCH,ROCKER,125-277V,20A	1
16	BU-3964	BUSHING,STRAIGHT,STRAIN RELIEF	1
17	PG-25574	3/8" HOLE PLUG	1
18	1493	GUARD SENSOR,W/MW	1
19	SN-38110	SENSOR, 100 OHM, 110" WIRE,	1
20	BK-29605	BLOCK, SENSOR, ELEC. CONTROL	1
21	NU-2296	NUT, HEX #8-32	2
22	5009712	PROBE COVER WELDMENT	1
23	PR-34705	PROBE,RECEPTACLE,600MM WIRE	1
24	PR-36065	PROBE,QUICK CONNECT,PT100	1

750-S Bonnet Package "L", Electronic with Probe, 230V



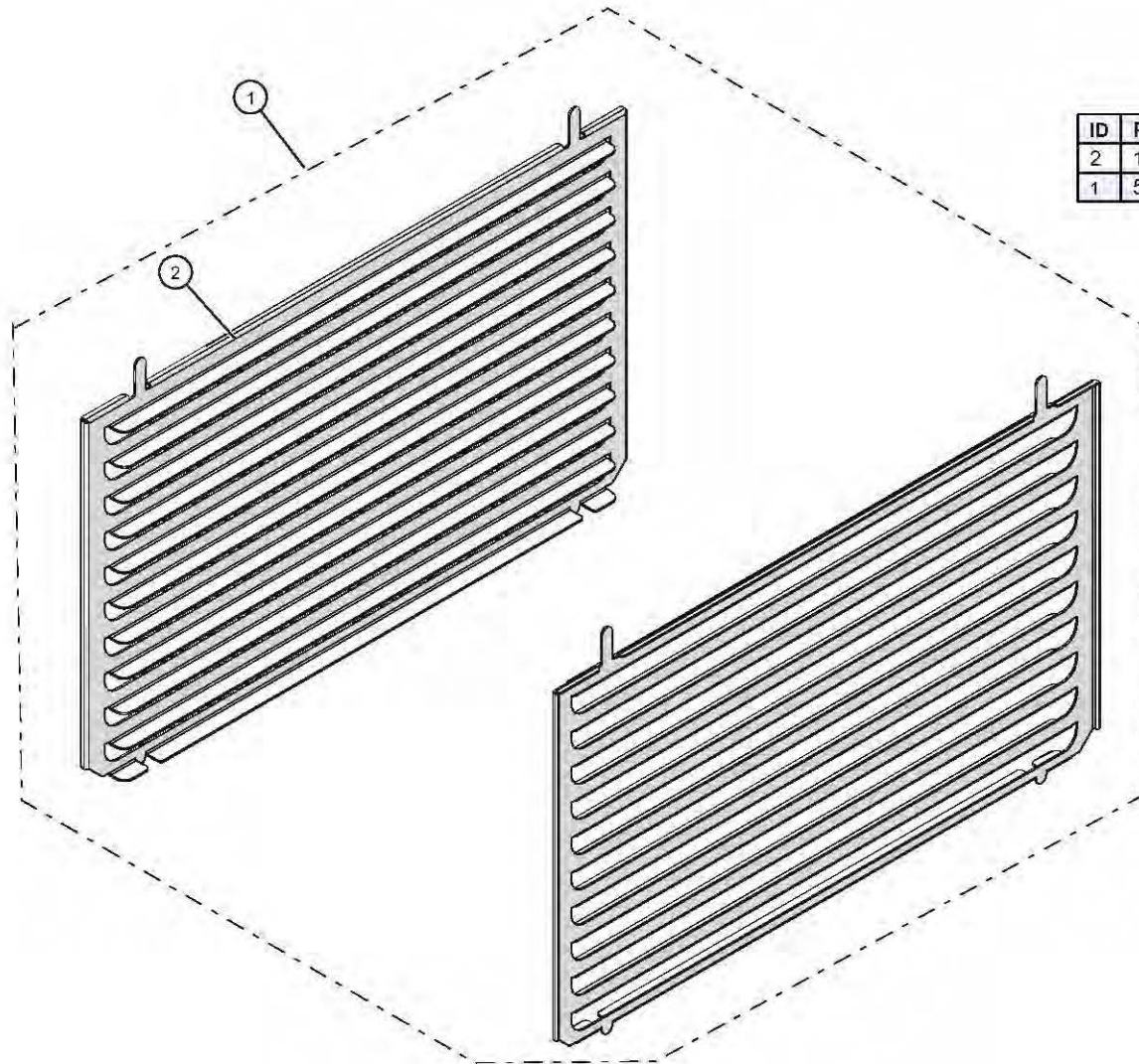
ID	Part No.	Description	Qty
1	13239	PROBE HOLDER, TH/III	1
2	RI-2100	RIVET,BLIND,#44,STNLS	18
3	SW-33559	SWITCH, REED, SPST	1
4	BU-3419	3/8" BLACK HOLE BUSHING	1
5	PE-27267	750-S OVERLAY, ELEC	1
6	5012944	750-S ELEC FRONT TRIM STUD	1
7	5012946	SINGLE WARMER CONTROL	1
8	NU-26526	NUT, #8-32 UNC KEPS ZP	4
9	5012606	1000-S ELEC 230V, ELEC CHASSIS	1
10	TT-33476	THERMOSTAT, 300F HI-LIMIT	1
11	1003936	HI-LIMIT PROTECTION COVER	1
12	SC-22271	SCREW,M4x0.7X6MM PAN	8
13	SW-34769	SWITCH,ROCKER,125-277V,20A	1
14	CV-38297	COVER, IPX RATED, SW-34769	1
15	BU-3964	BUSHING,STRAIGHT,STRAIN RELIEF	1
16	WS-22297	WASHER, FLAT	2
17	SC-22924	HHCS, M6 X 20, W/NO MARKING	1
18	WS-22302	WASHER, SPLIT LOCK	2
19	NU-22770	NUT, THREADED INSERT, M6	1
20	1010119	HI-LIMIT BULB HOLDER	1
21	SN-38110	SENSOR, 100 OHM, 110" WIRE,	1
22	BK-29605	BLOCK, SENSOR, ELEC. CONTROL	1
23	1493	GUARD SENSOR,W/MW	1
24	NU-2296	NUT, HEX #8-32	2
25	5009712	PROBE COVER WELDMENT	1
26	PR-34705	PROBE,RECEPTACLE,600MM WIRE	1
27	1010813	PAN SLIDE, 750 (09)	2
28	PR-36065	PROBE,QUICK CONNECT,PT100	1

Side Racks, Domestic



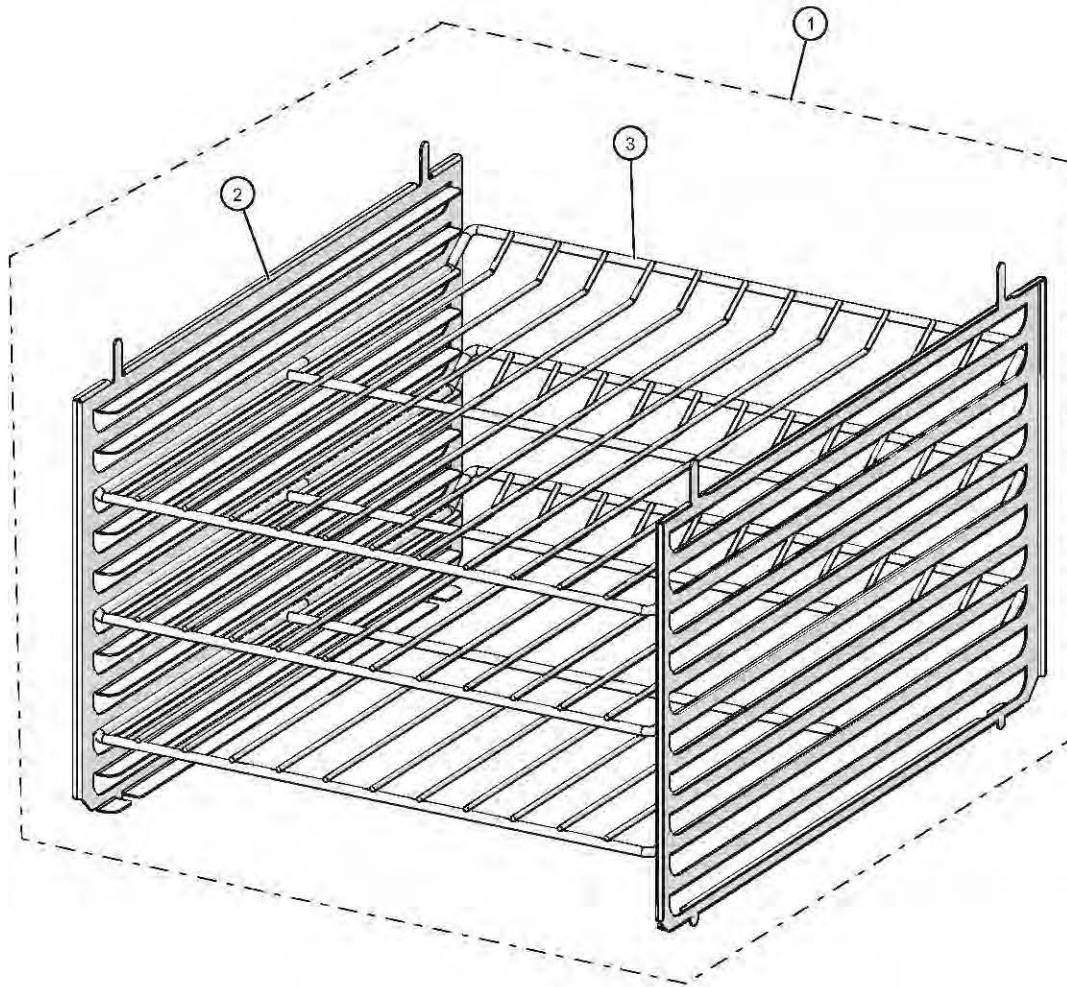
ID	Part No.	Description	Qty
1	5034345	RACK,SIDE PKG,DOMESTIC, 750-S	1
2	SR-28404	SIDE RACK 750-S CHROME PLATED	2

Side Racks, International



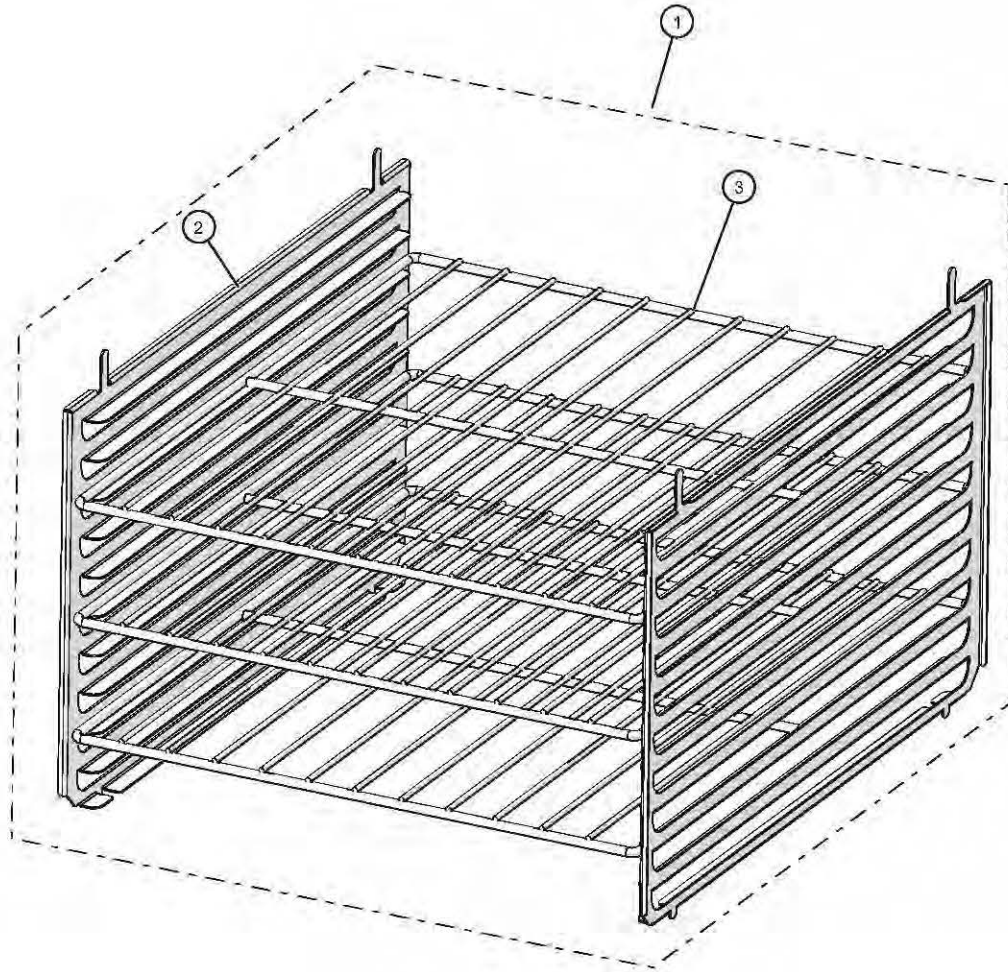
ID	Part No.	Description	Qty
2	1010813	PAN SLIDE, 750 (09)	2
1	5034346	RACK,SIDE,INTERNATIONAL	1

Shelves, Reach-In



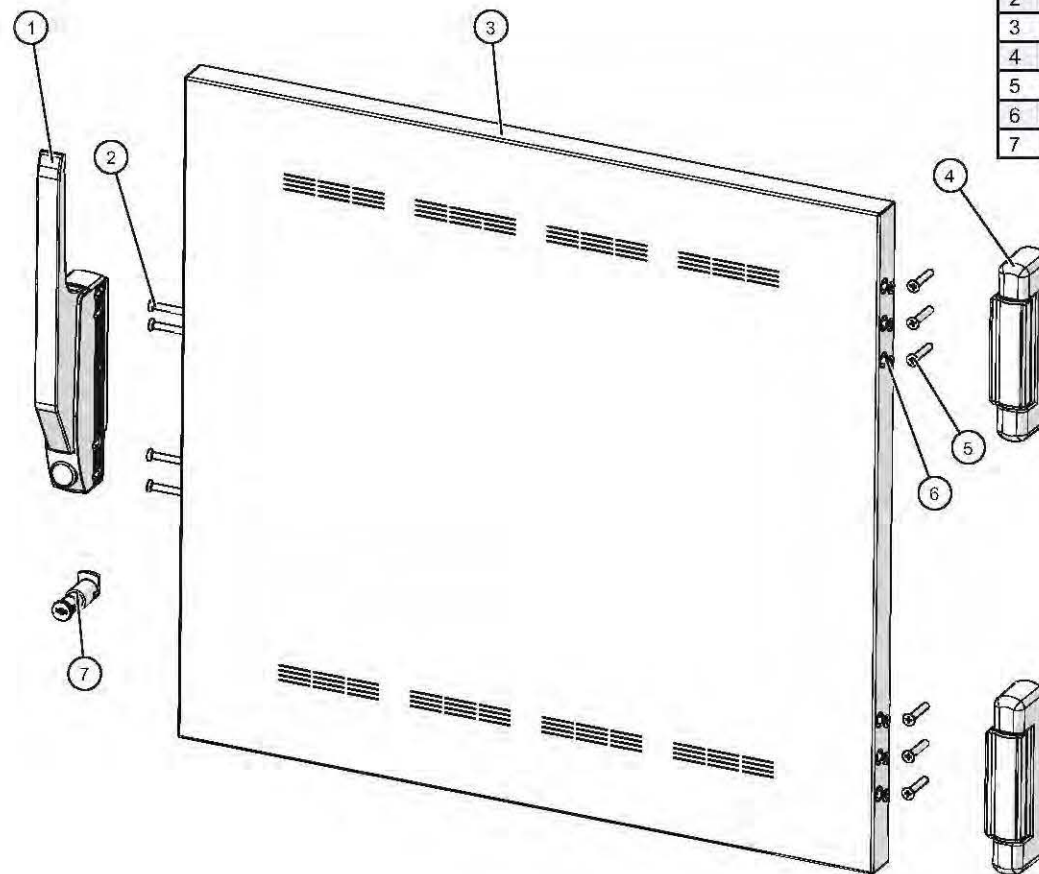
ID	Part No.	Description	Qty
1	5034356	SHELF, REACH IN, ASSEMBLY	1
2	1010813	PAN SLIDE, 750 (09)	2
3	SH-2105	SHELF, NICKEL CHROME, 750-S	3

Shelves, Pass-Thru



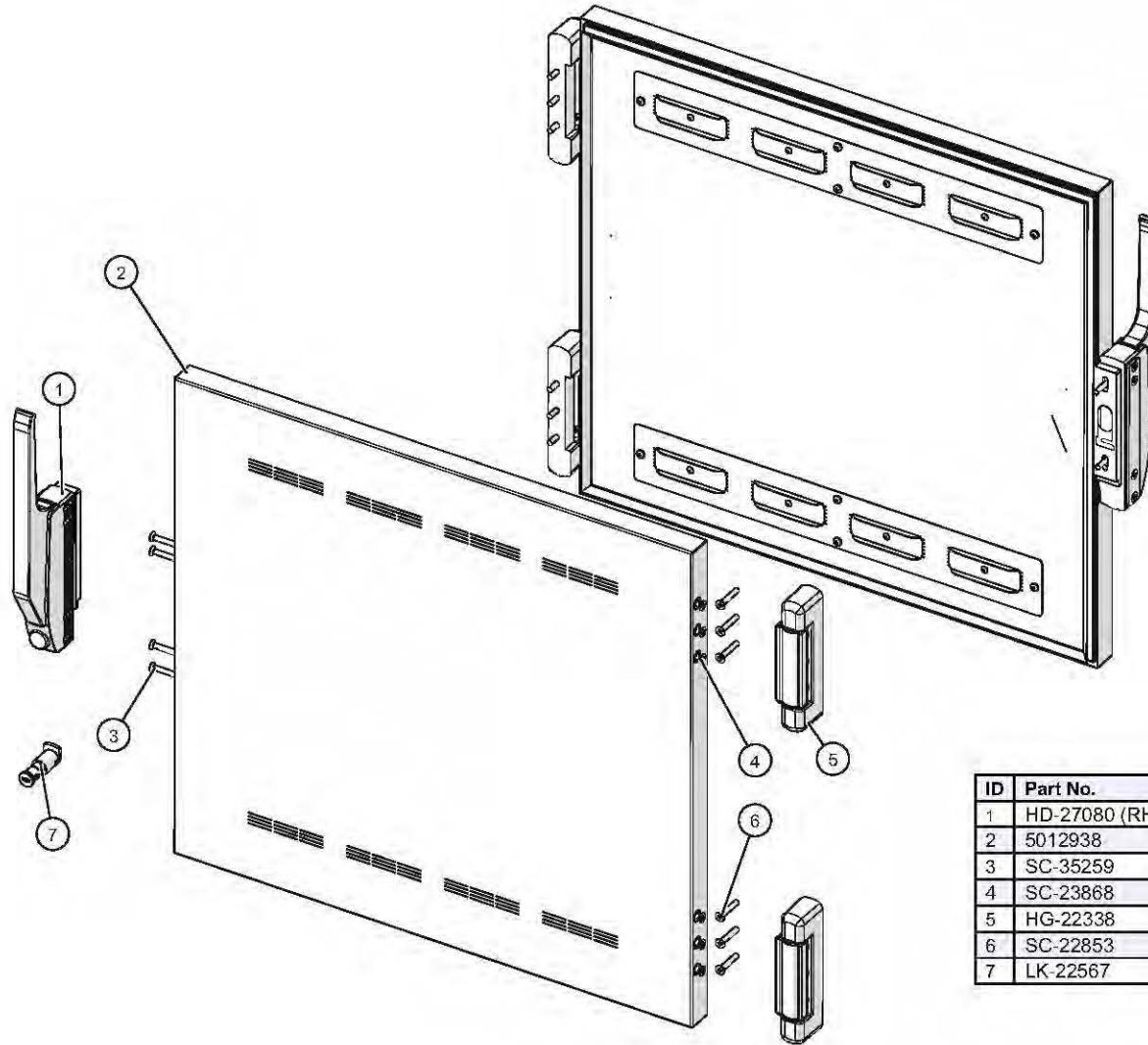
ID	Part No.	Description	Qty
1	5034357	SHELF,PASS-THRU,ASSEMBLY	1
2	1010813	PAN SLIDE, 750 (09)	2
3	SH-2327	SHELF, 750-S/PT NICKEL CHROME	3

750-S Slab Door Package "A", Reach-In



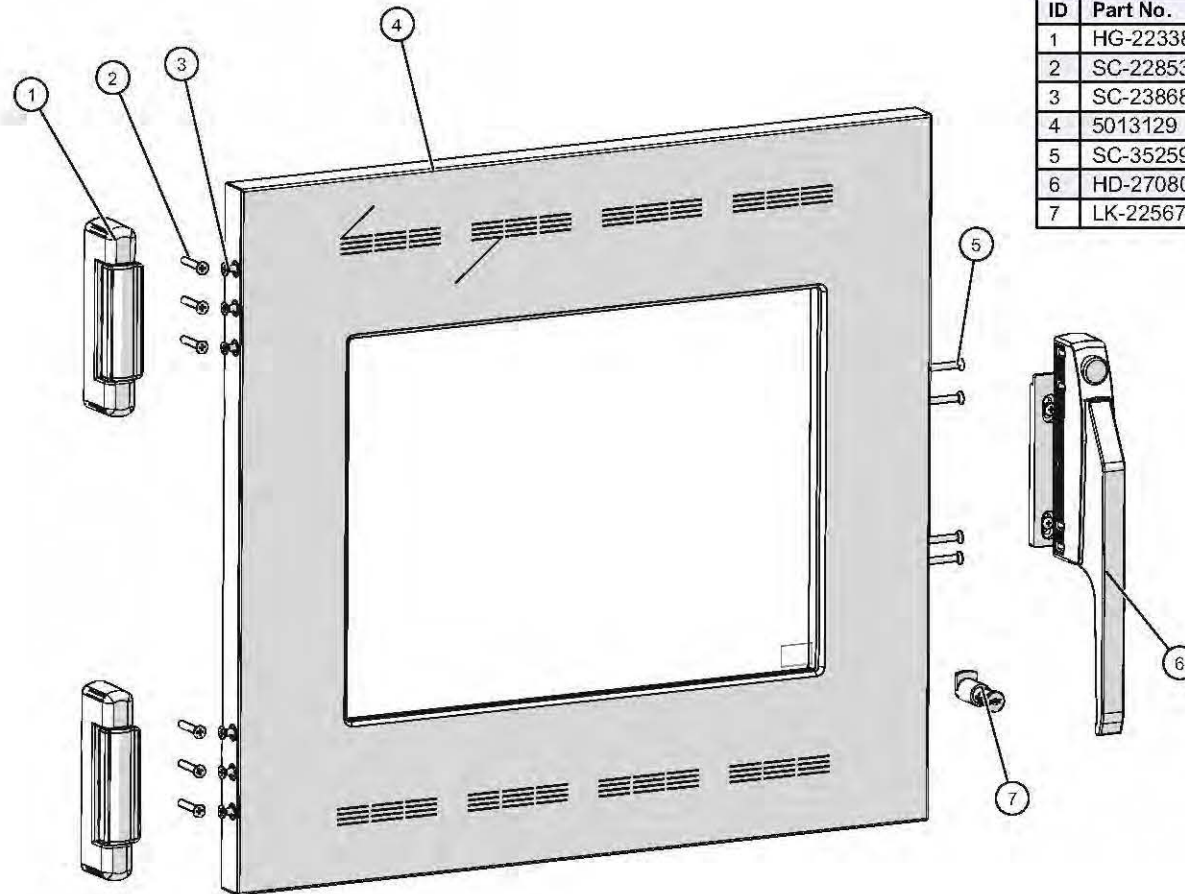
ID	Part No.	Description	Qty
1	HD-27080 (RH)	HANDLE, OFFSET MAG LATCH	1
2	SC-35259	SCREW, M5x0.8X50MM FLAT	4
3	5012938	DOOR, ASSY, SLAB, 750-S	1
4	HG-22338	HINGE, 1-3/8 OFFSET, PAIR, CHROME	1
5	SC-22853	SCREW, M5x0.8X30MM FLAT	6
6	SC-23868	SCREW, M5x0.8X20MM FLAT	6
7	LK-22567	LOCK, CYLINDER (optional)	1

750-S Slab Door Package "C", Pass-Thru



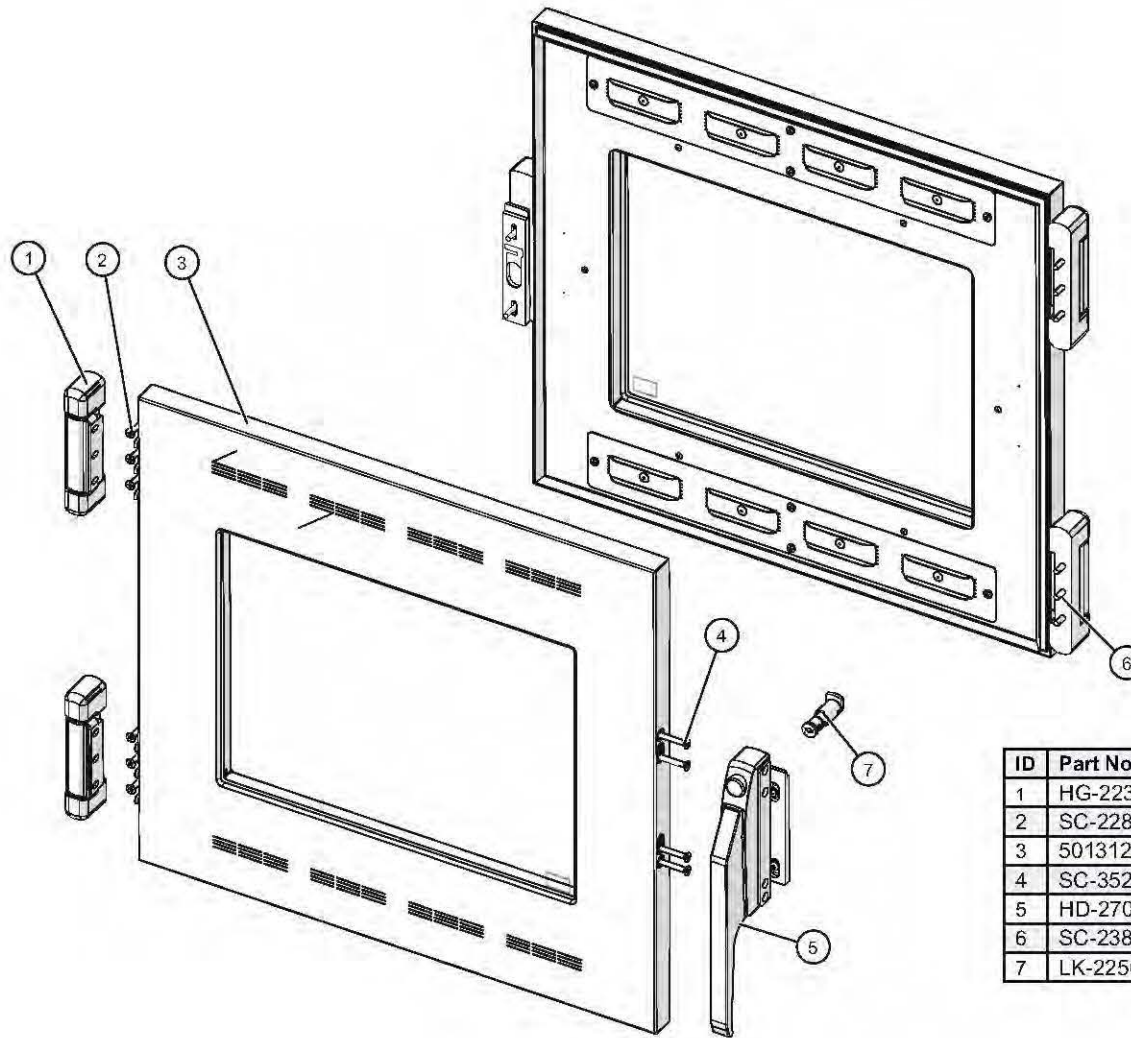
ID	Part No.	Description	Qty
1	HD-27080 (RH)	HANDLE, OFFSET MAG LATCH	2
2	5012938	DOOR, ASSY, SLAB, 750-S	2
3	SC-35259	SCREW, M5x0.8X50MM FLAT	8
4	SC-23868	SCREW, M5x0.8X20MM FLAT	12
5	HG-22338	HINGE, 1-3/8 OFFSET, PAIR, CHROME	2
6	SC-22853	SCREW, M5x0.8X30MM FLAT	12
7	LK-22567	LOCK, CYLINDER (optional)	1

750-S Window Door Package "B", Reach-In



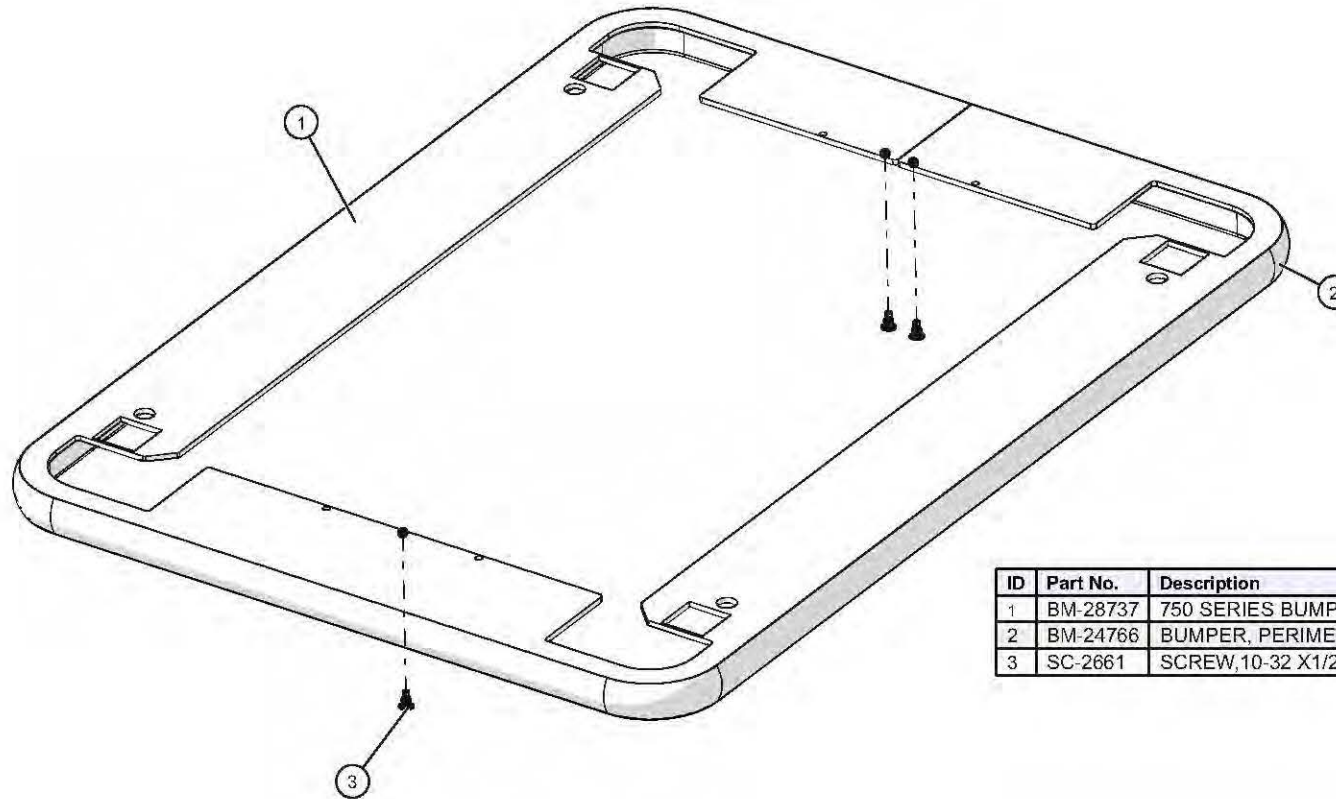
ID	Part No.	Description	Qty
1	HG-22338	HINGE, 1-3/8 OFFSET, PAIR, CHROME	1
2	SC-22853	SCREW, M5x0.8X30MM FLAT	6
3	SC-23868	SCREW, M5x0.8X20MM FLAT	6
4	5013129	DOOR, ASSY, WINDOW	1
5	SC-35259	SCREW, M5x0.8X50MM FLAT	4
6	HD-27080	HANDLE, OFFSET MAG LATCH	1
7	LK-22567	LOCK, CYLINDER (optional)	1

750-S Window Door Package "D", Pass-Thru



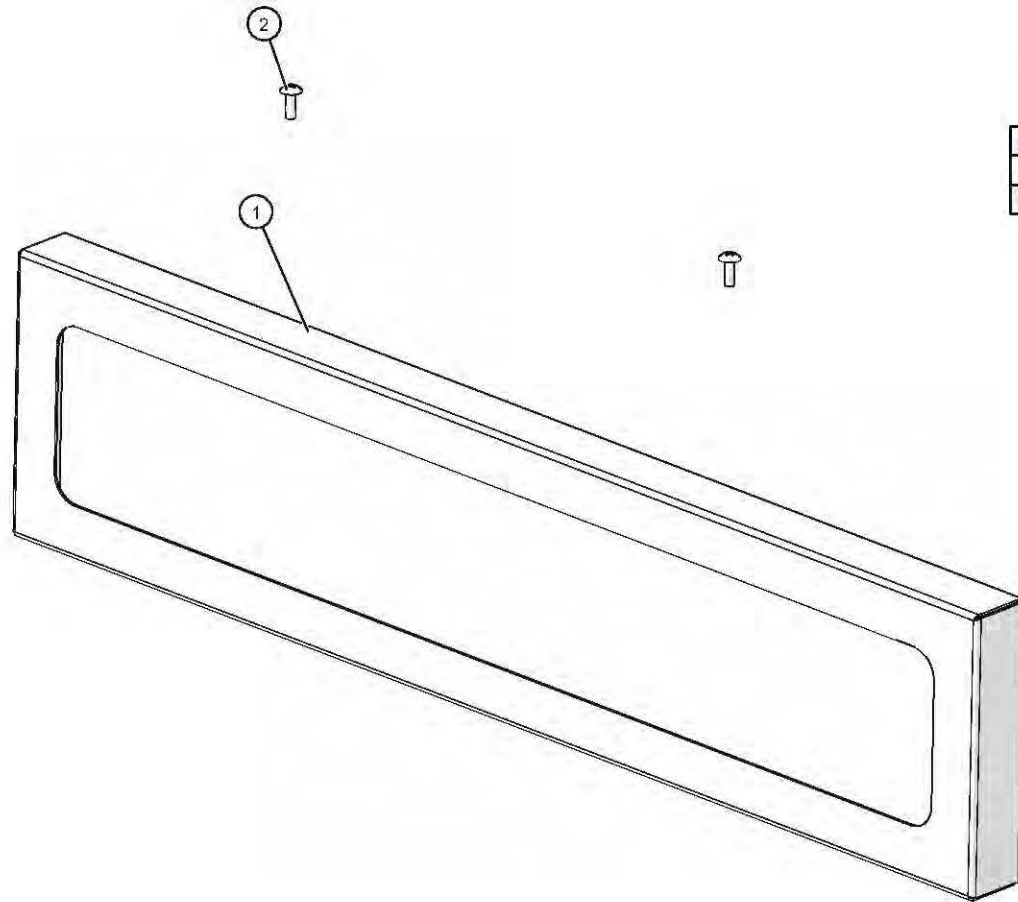
ID	Part No.	Description	Qty
1	HG-22338	HINGE, 1-3/8 OFFSET, PAIR, CHROME	2
2	SC-22853	SCREW, M5x0.8X30MM FLAT	12
3	5013129	DOOR, ASSY, WINDOW, 750-S	2
4	SC-35259	SCREW, M5x0.8X50MM FLAT	8
5	HD-27080	HANDLE, OFFSET MAG LATCH	2
6	SC-23868	SCREW, M5x0.8X20MM FLAT	12
7	LK-22567	LOCK, CYLINDER (optional)	1

750-S Bumper Assembly (optional)



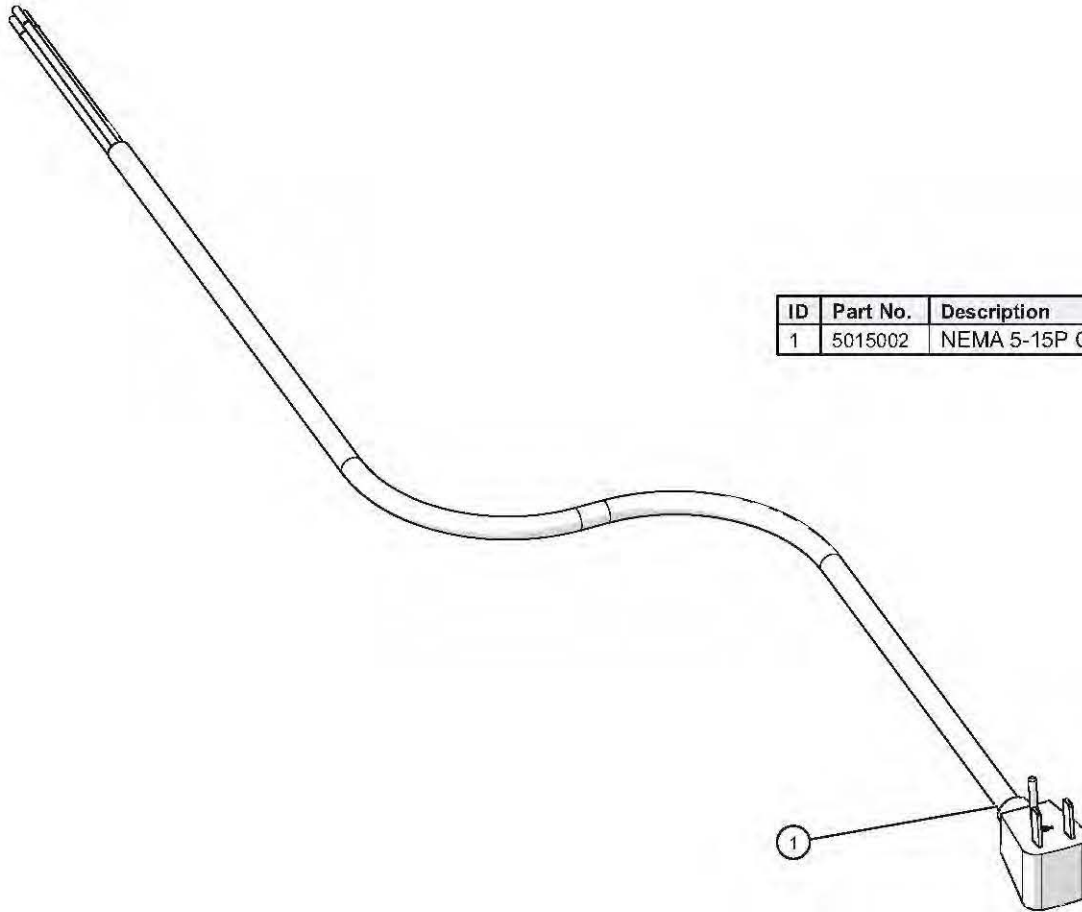
ID	Part No.	Description	Qty
1	BM-28737	750 SERIES BUMPER	1
2	BM-24766	BUMPER, PERIMETER, RUBBER	1
3	SC-2661	SCREW,10-32 X1/2,NF PHIL TRUSS M/S,18-8 SS	3

Security Panel Assembly (optional)



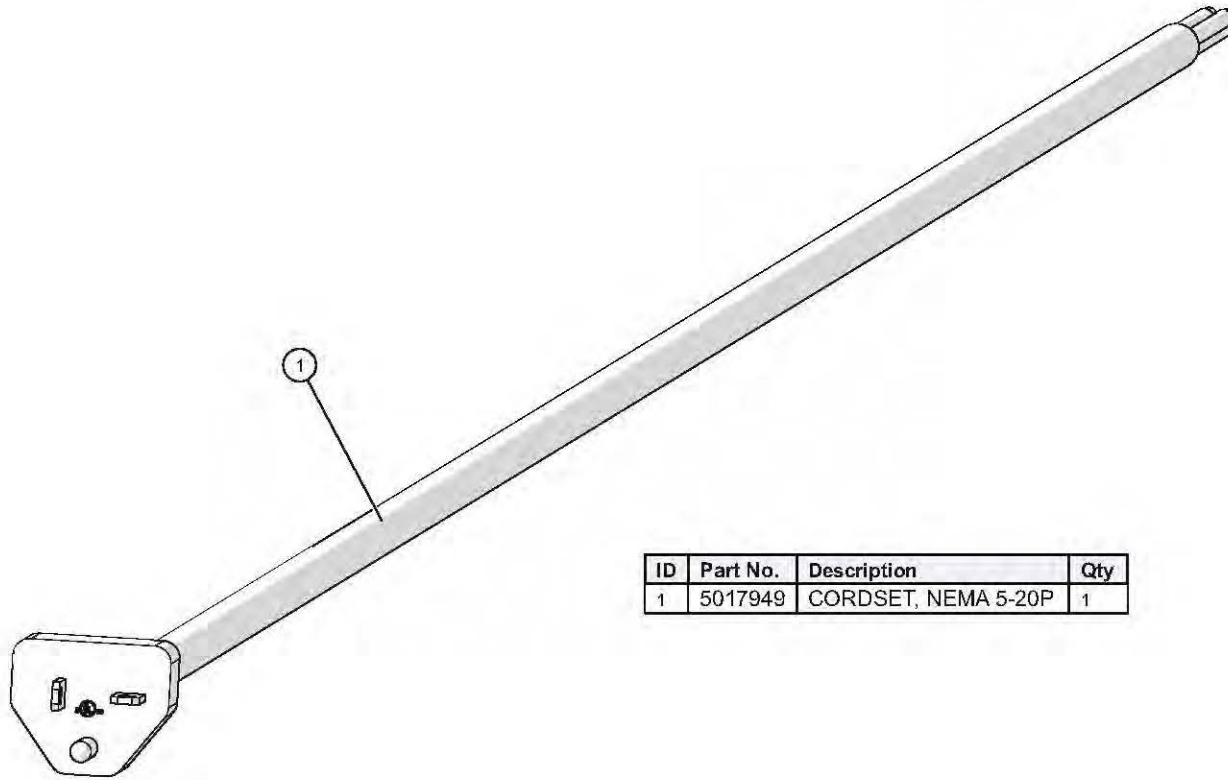
ID	Part No.	Description	Qty
1	1012485	750 SECURITY PANEL FRAME	1
2	SC-2425	8-32 x 1/2" PHIL SCREW	3

Cordset/Ferrule Assembly, NEMA 5-15P



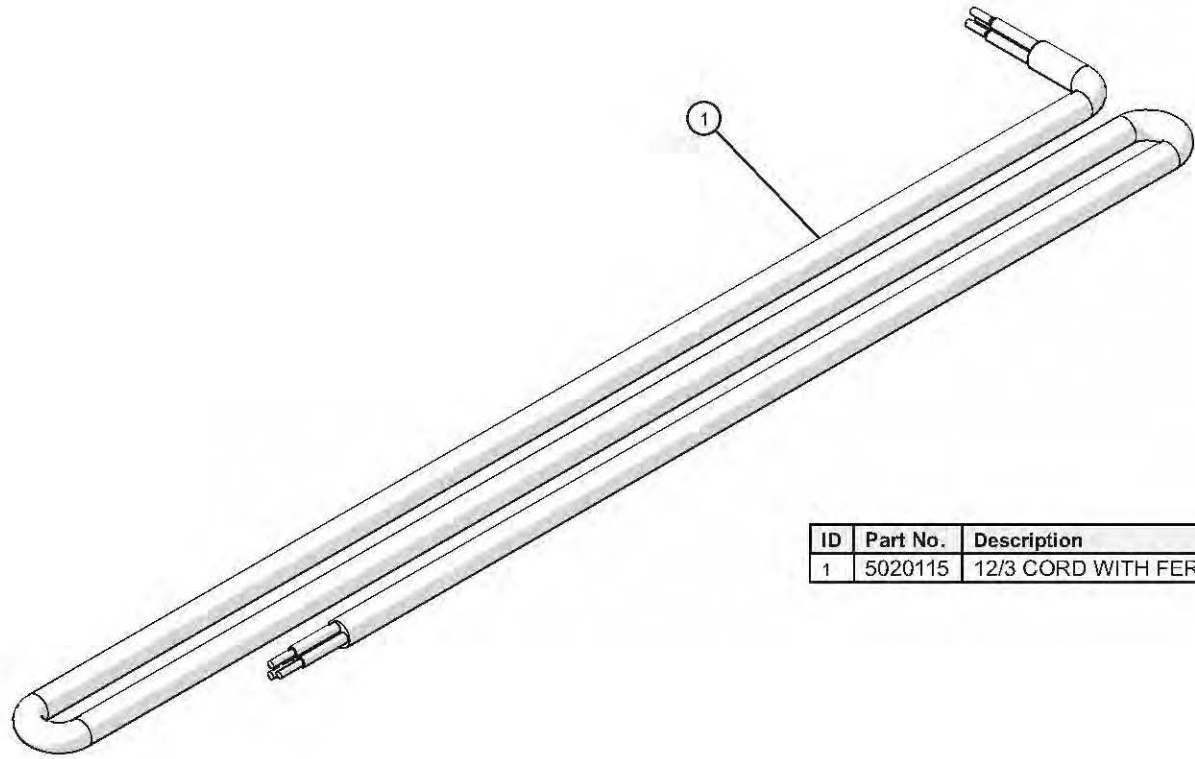
ID	Part No.	Description
1	5015002	NEMA 5-15P CORDSET FERRULE ASSEMBLY

Cordset/Ferrule Assembly, NEMA 5-20P



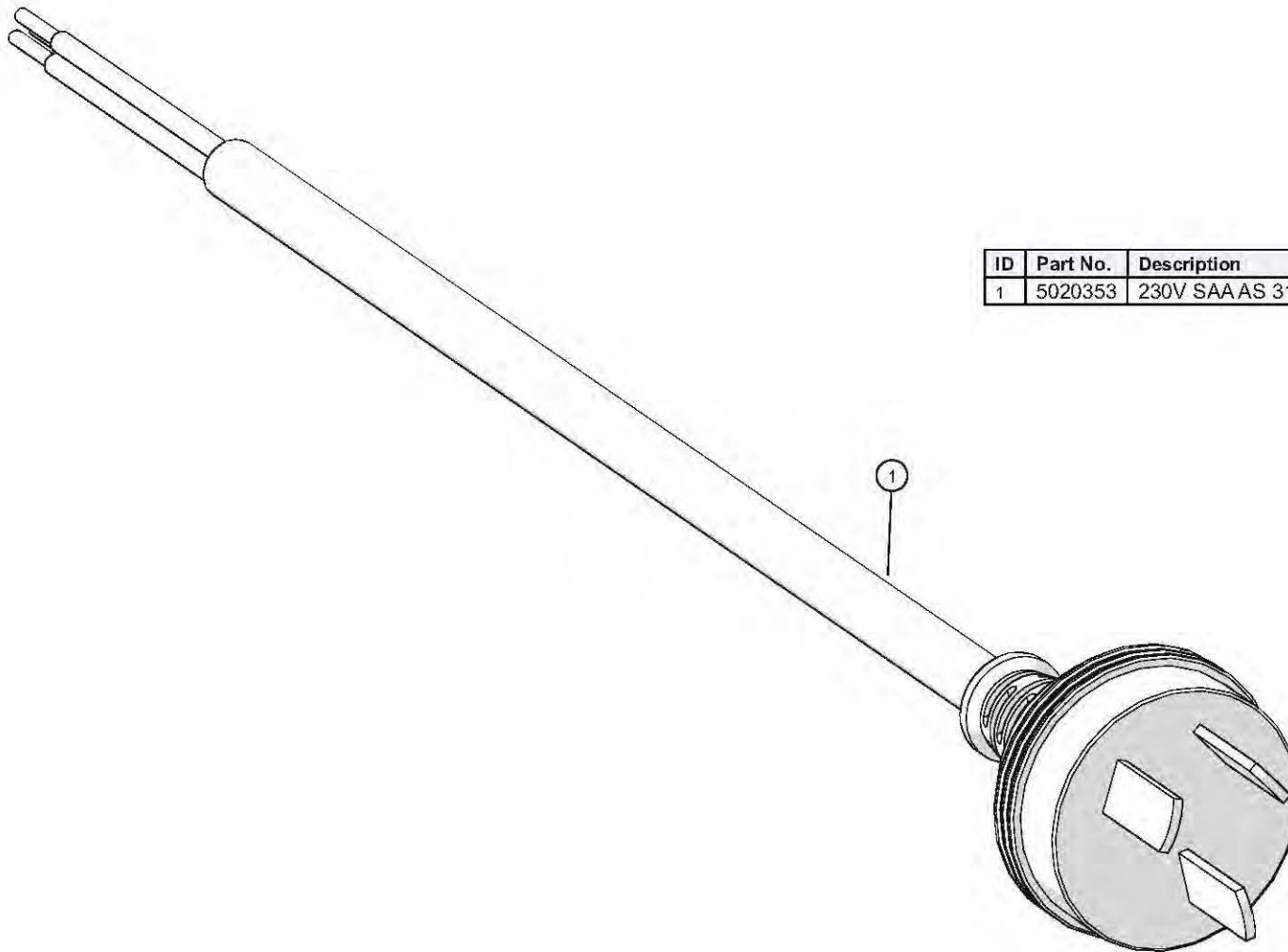
ID	Part No.	Description	Qty
1	5017949	CORDSET, NEMA 5-20P	1

Cord, 12/3 with Ferrules, 12'



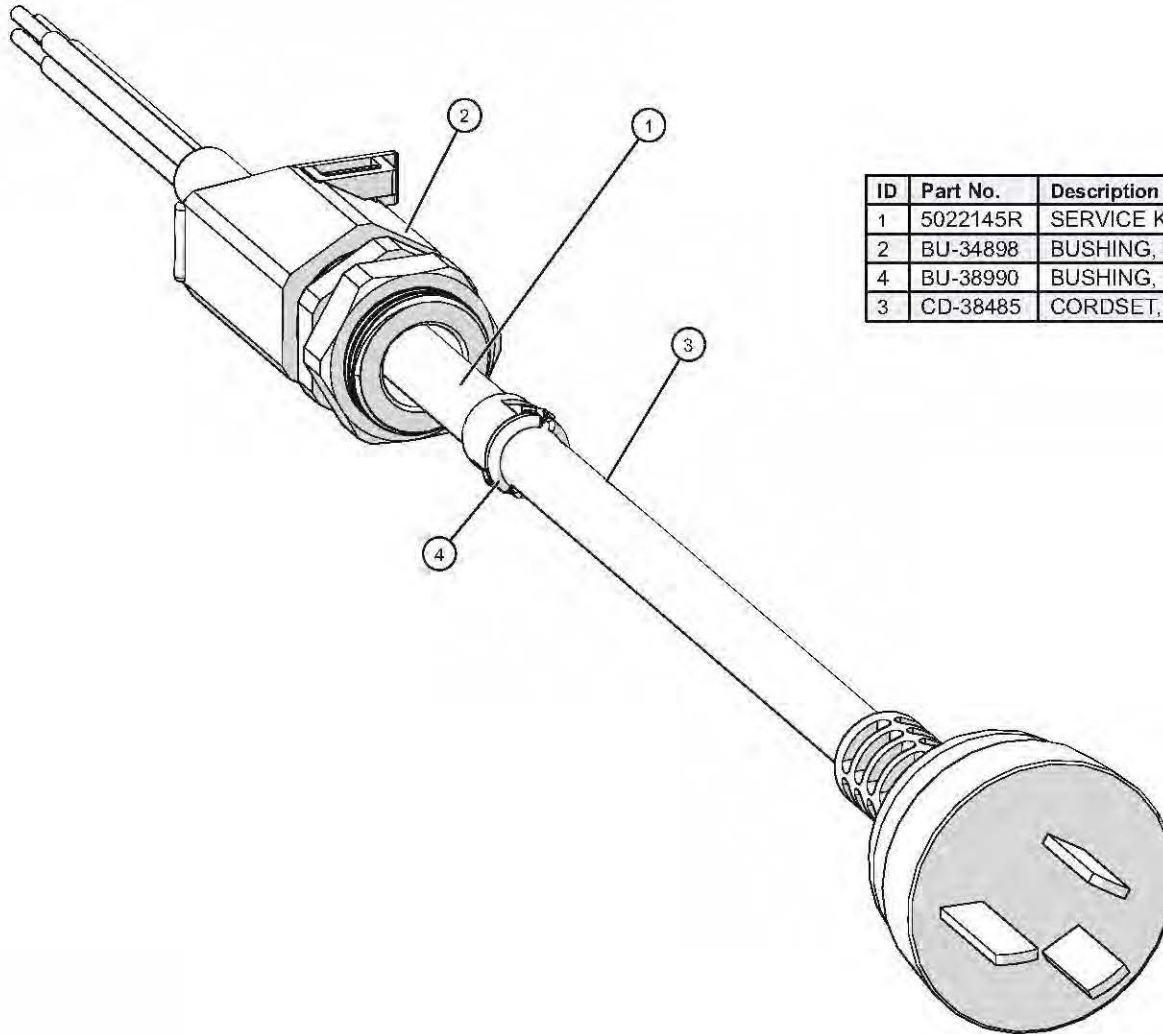
ID	Part No.	Description	Qty
1	5020115	12/3 CORD WITH FERRULES, 12'	1

Cordset/Ferrule Assembly, SAA AS 3112-16P



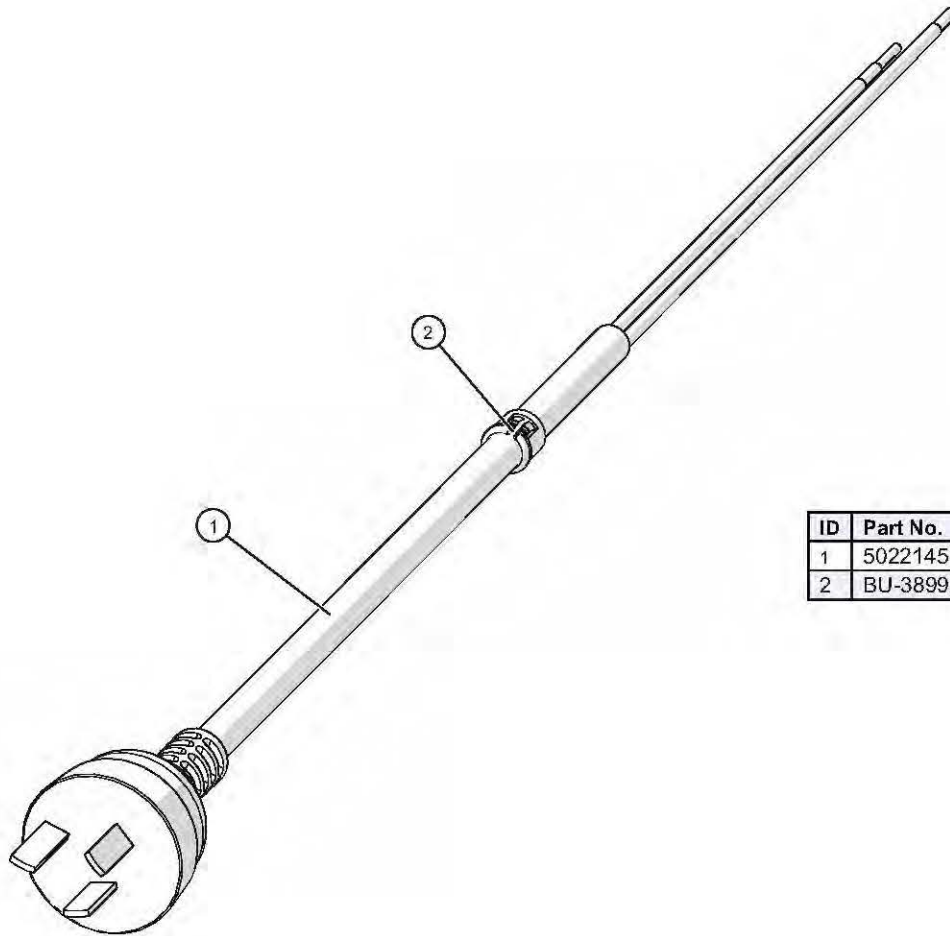
ID	Part No.	Description	Qty
1	5020353	230V SAA AS 3112-16P CORDSET	1

Cordset Assembly, AS/NZS 3112



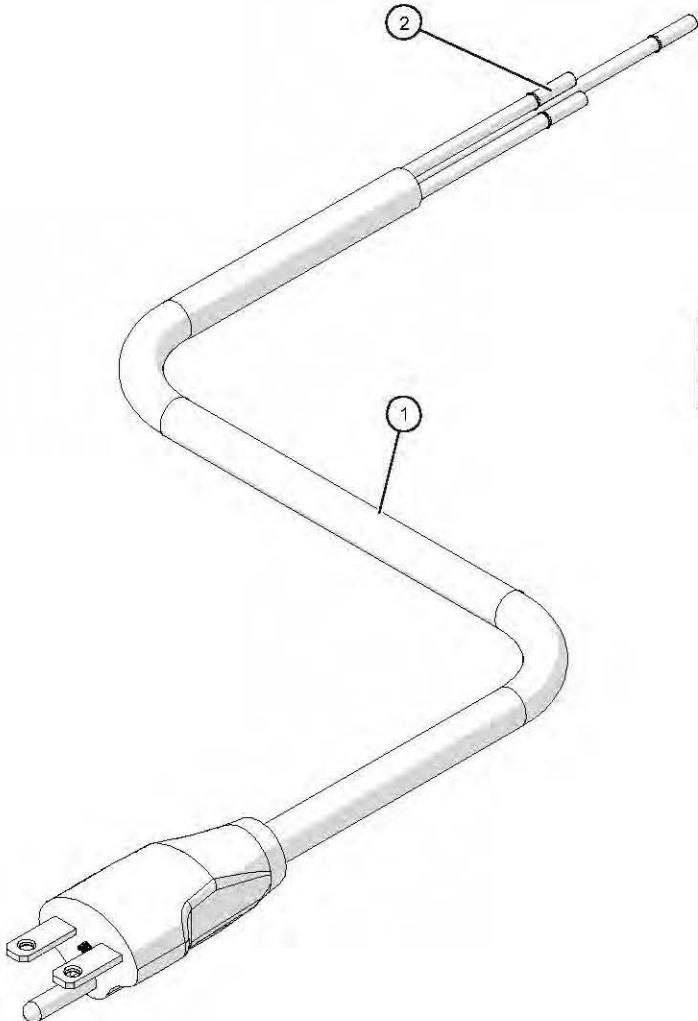
ID	Part No.	Description	Qty
1	5022145R	SERVICE KIT, CORDSET,10A-250V	1
2	BU-34898	BUSHING, STRAIN RELIEF, 90°, BLK	1
4	BU-38990	BUSHING, SNUB, 3/16" CABLE	1
3	CD-38485	CORDSET,10A-250V	1

Cordset Assembly, AS/NZS 3112 2000



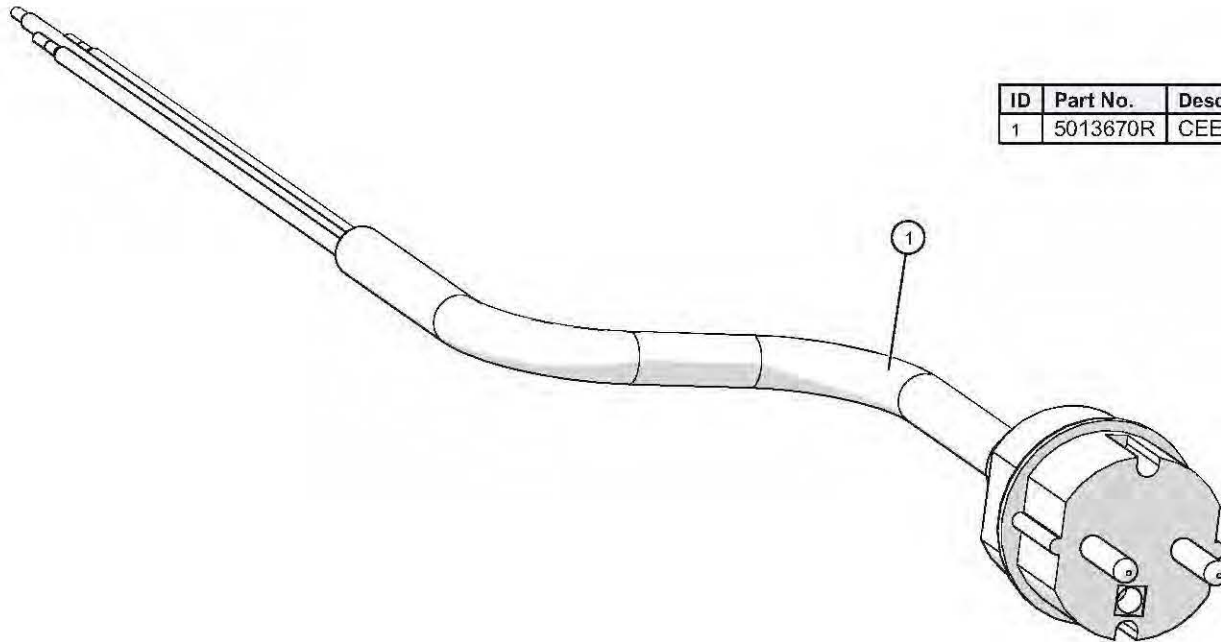
ID	Part No.	Description	Qty
1	5022145	CORDSET, 10A-250V, AS/NZS 3112:2000	1
2	BU-38990	BUSHING, SNUB, 3/16" CABLE	1

Cordset/Ferrule Assembly, NEMA 6-15P



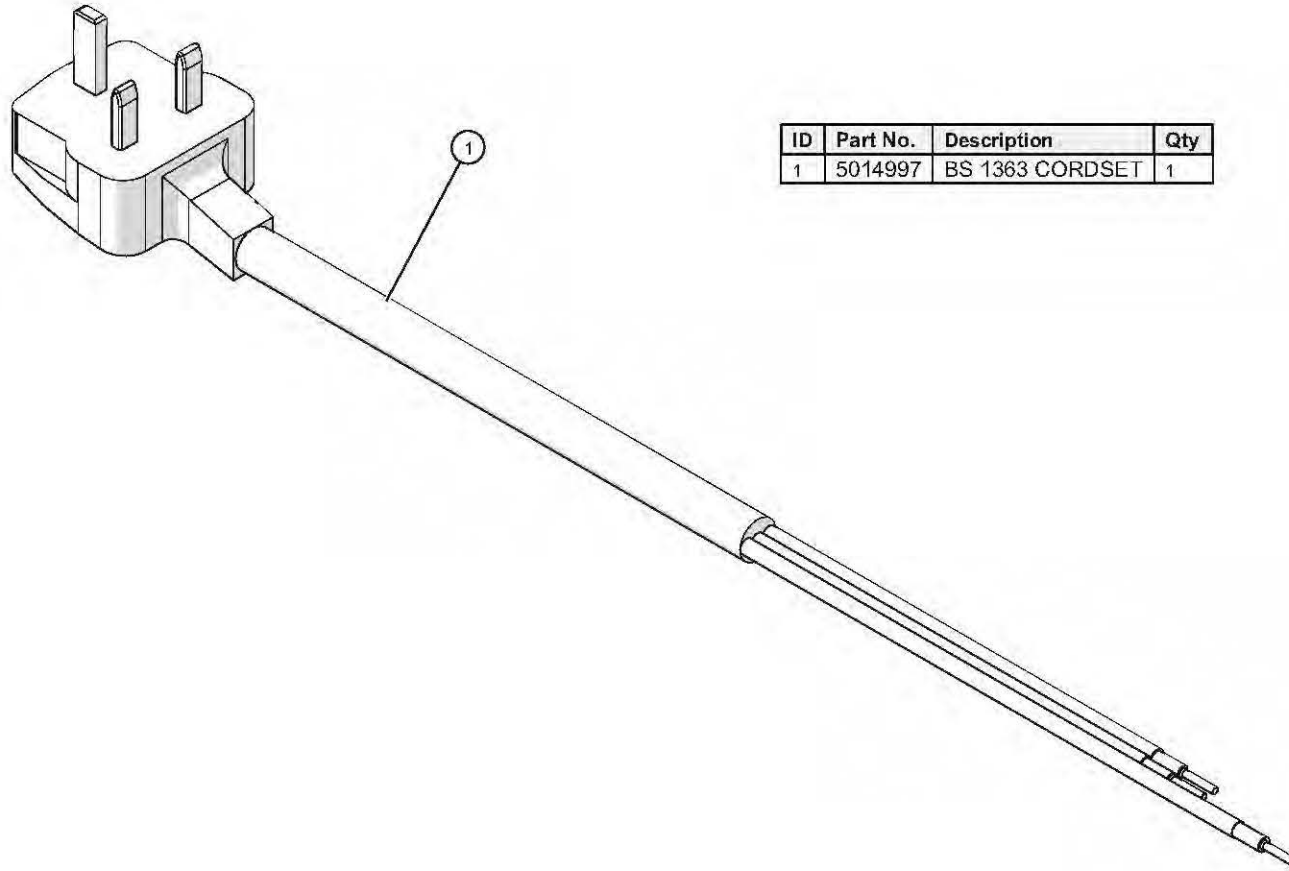
ID	Part No.	Description
1	CD-3551	CORDSET, 14/3 SJTO, 250V
2	CR-34829	CONNECTOR, #14 FERRULE

Cordset/Ferrule Assembly, CEE-7/7

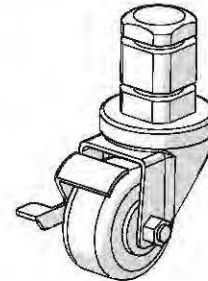
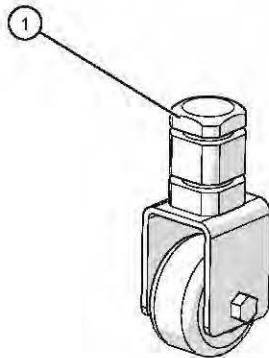
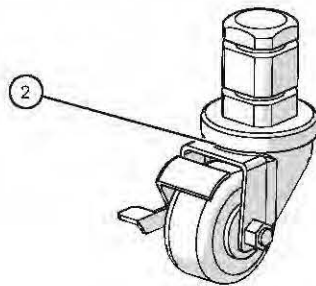


ID	Part No.	Description	Qty
1	5013670R	CEE 7/7 CORDSET FERRULE ASSEMB	1

Cordset/Ferrule Assembly, BS 1363

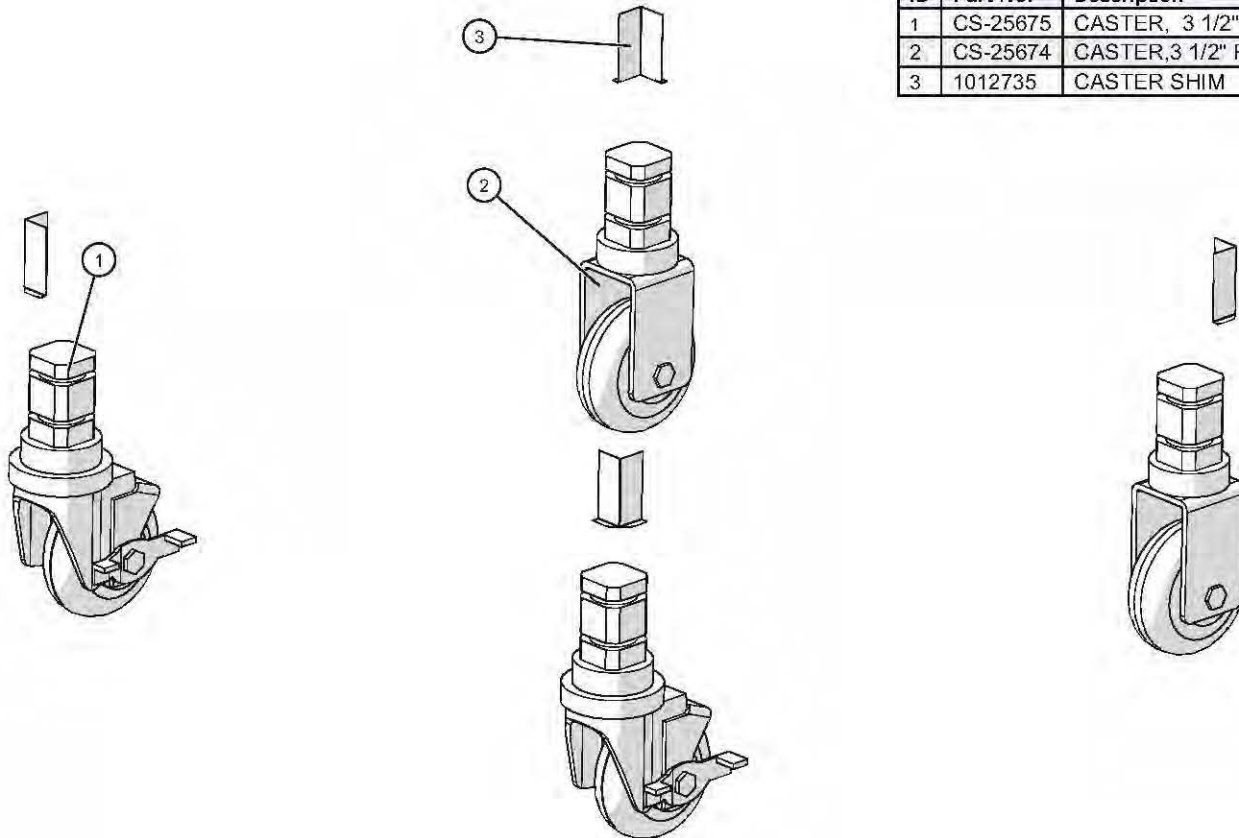


Caster Package, 2-1/2"



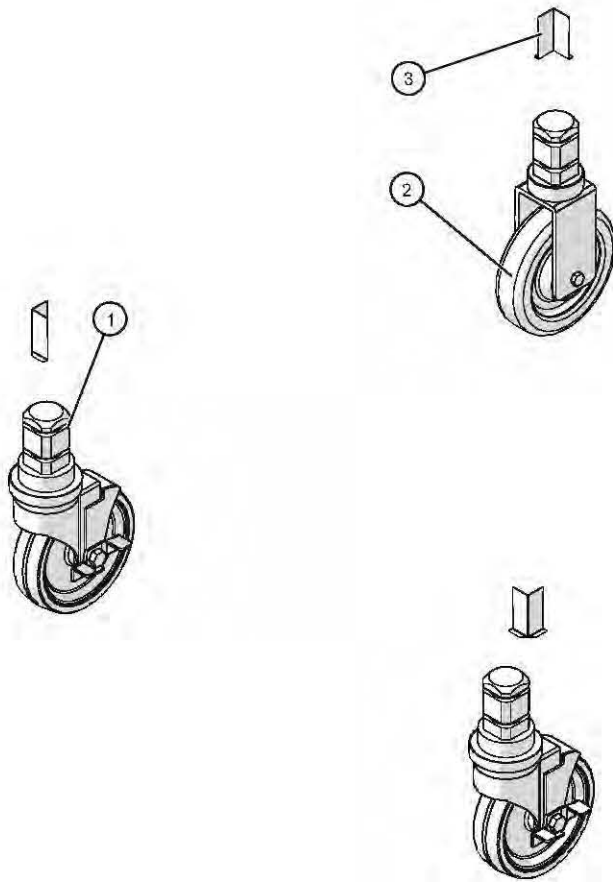
ID	Part No.	Description	Qty
1	CS-38265	CASTER, RIGID 2.5", 1.5" STEM	2
2	CS-38264	CASTER, SWIVEL 2.5", 1.5" STEM	2

Caster Package, 3-1/2"

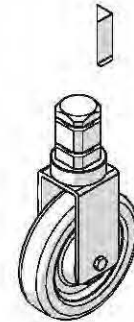


ID	Part No.	Description	Qty
1	CS-25675	CASTER, 3 1/2" SWIVEL W/ BRAKE	2
2	CS-25674	CASTER, 3 1/2" RIGID	2
3	1012735	CASTER SHIM	4

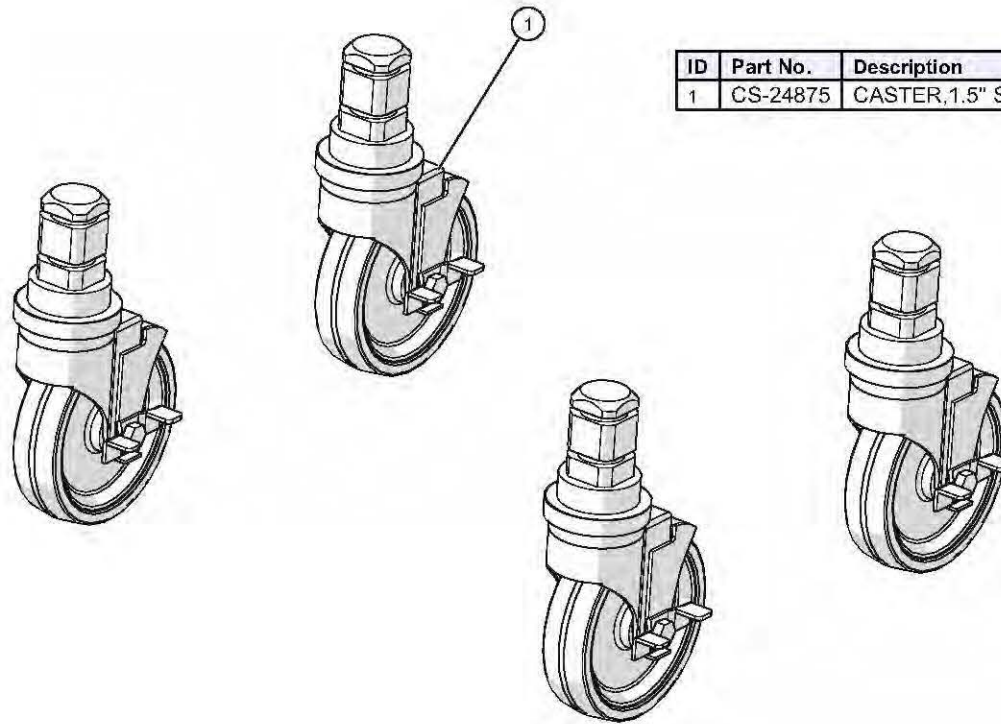
Caster Package, 5"



ID	Part No.	Description	Qty
1	CS-24875	CASTER, 1.5" STEM, 5" SWIV WHL	2
2	CS-24874	CASTER, 5" RIGID, 1.5" STEM	2
3	1012735	CASTER SHIM	4

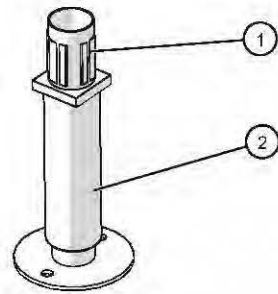


Caster Package, 5" (all swivel)

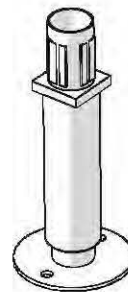
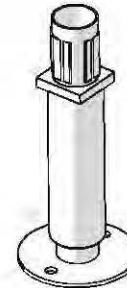
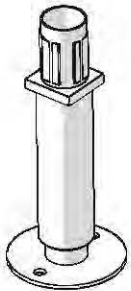


ID	Part No.	Description
1	CS-24875	CASTER, 1.5" STEM, 5" SWIV WHL

Leg Package, 6"



ID	Part No.	Description	Qty
2	LG-23067	6" LEG W/ ADJUSTABLE FLANGED FOOT	4
1	LG-37094	LEG, ADJUST, FOOTING	4





ALTO-SHAAM.

Menomonee Falls, WI U.S.A.

Phone 800-558-8744 | +1-262-251-3800 | alto-shaam.com

ASIA

Shanghai, China
Phone +86-21-6173-0336

AUSTRALIA

Brisbane, Queensland
Phone 800-558-8744

CANADA

Concord, Ontario Canada
Toll Free Phone 866-577-4484
Phone +1-905-660-6781

FRANCE

Aix en Provence, France
Phone +33[0]4-88-78-21-73

GMBH

Bochum, Germany
Phone +49 [0]234 298798-0

ITALY

Padua, Italy
Phone +39 3476073504

INDIA

Pune, India
Phone +91 9657516999

MEXICO

Phone +52 1 477-717-3108

MIDDLE EAST & AFRICA

Dubai, UAE
Phone +971-4-321-9712

CENTRAL & SOUTH AMERICA

Miami, FL USA
Phone +1 954-655-5727