

FLANGED INLET (IT-3001)

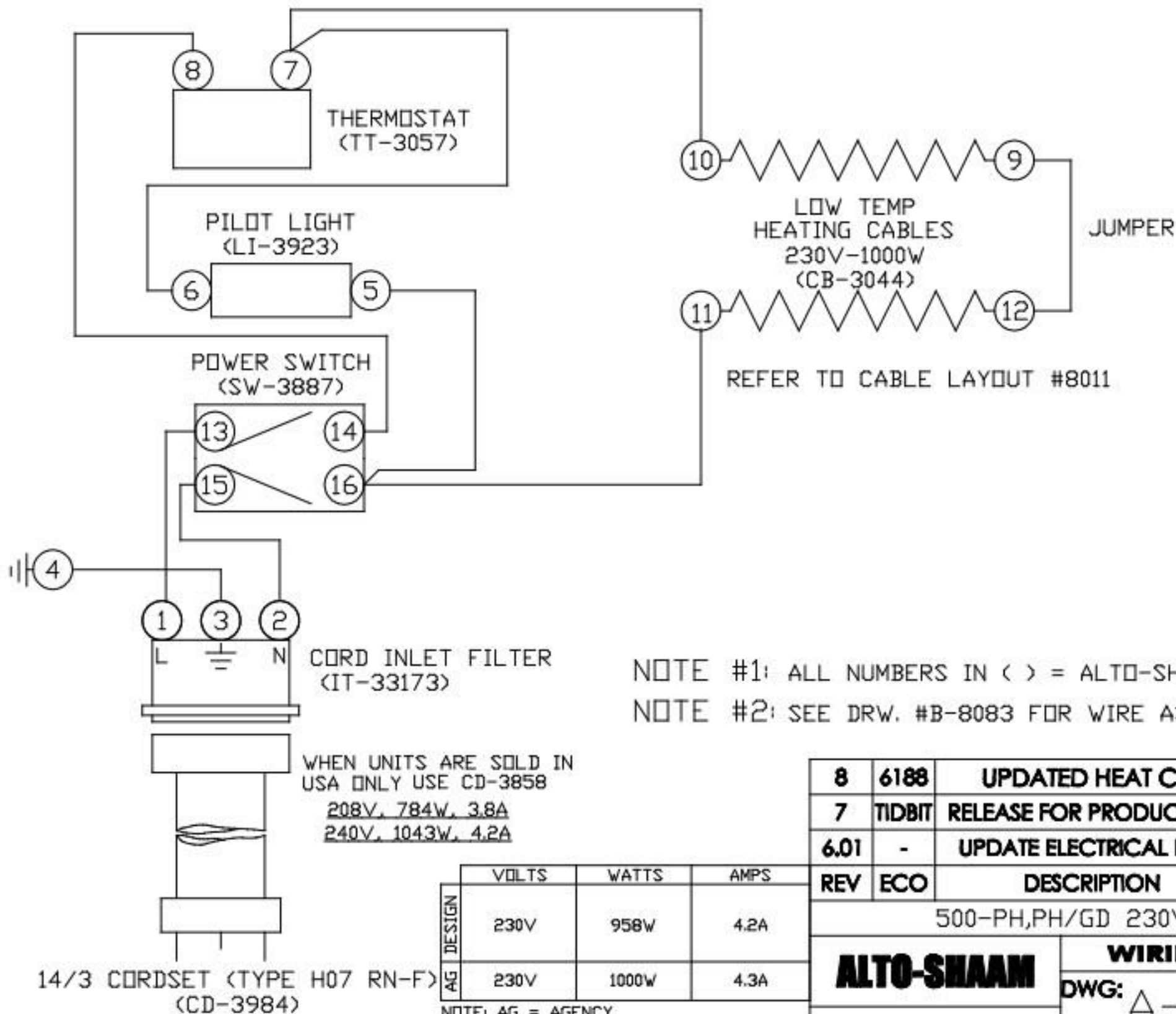
NOTE #1: ALL NUMBERS IN () = ALTO-SHAAM PART NUMBERS

NOTE #2: SEE DRW. #B-8082 FOR WIRE ASSEMBLIES

5	7220	REMOVE YLW DESIGNATOR	10/17/14	TJG
4	TIDBIT	RELEASE FOR PRODUCTION	2/08/10	JPk
3.01	-	UPDATE ELECTRICAL INFO	2/8/10	JPk
REV	ECO	DESCRIPTION	DATE	APP

500-PH,PH/GD 120V 50/60HZ

ALTO-SHAAM	WIRING DIAGRAM	
	DWG: A-7053	SHEET 1_OF_1
BY: LLK DATE: 12/30/77		



NOTE #1: ALL NUMBERS IN () = ALTO-SHAAM PART NUMBERS
NOTE #2: SEE DRW. #B-8083 FOR WIRE ASSEMBLIES

8	6188	UPDATED HEAT CABLES	1-16-13	DB
7	TIDBIT	RELEASE FOR PRODUCTION	2-9-10	REJ
6.01	-	UPDATE ELECTRICAL INFO	2-8-10	JPK
REV	ECO	DESCRIPTION	DATE	APP
500-PH,PH/GD 230V 50/60HZ				
ALTO-SHAAM		WIRING DIAGRAM		
BY: AL		DWG: A-7054	SHEET 1_OF_1	
DATE: 3/14/77				

	VOLTS	WATTS	AMPS
DESIGN	230V	958W	4.2A
AG	230V	1000W	4.3A

NOTE: AG = AGENCY