



Hot Food Holding Cabinets

500-S



Manufacturer's Information

Copyright

© Copyright 12/23 by Alto-Shaam, Inc.
 All rights reserved.
 This manual or any portion thereof may not be reproduced or used in any manner whatsoever without the express written permission of Alto-Shaam, Inc

Trademarks

All trademarks referenced in this documentation are the property of their respective owners.

Manufacturer

Alto-Shaam, Inc.
 P.O. Box 450
 W164 N9221 Water Street
 Menomonee Falls, WI 53052

Models Covered

500-S	Heated Holding Cabinets
--------------	-------------------------

Serial Number

The unit serial number is required for identifying and ordering the correct service parts.
 Record the unit serial number below for reference.

Serial Number

Parts Finder Tool

Interactive diagrams from this Parts Manual are available online at our Parts Finder Tool:
<https://www.alto-shaam.com/en/customer-support/parts>.
 Or, scan the QR code below.



Parts Ordering Information

Original manufacturer's replacement parts may be ordered directly from the Alto-Shaam network of Authorized Service Agents and Parts Distributors. Follow this link for a map to a local partner: <https://www.alto-shaam.com/en/how-to-buy>. If you are an Authorized Service Agent or Parts Distributor, please submit your purchase order to parts@alto-shaam.com.

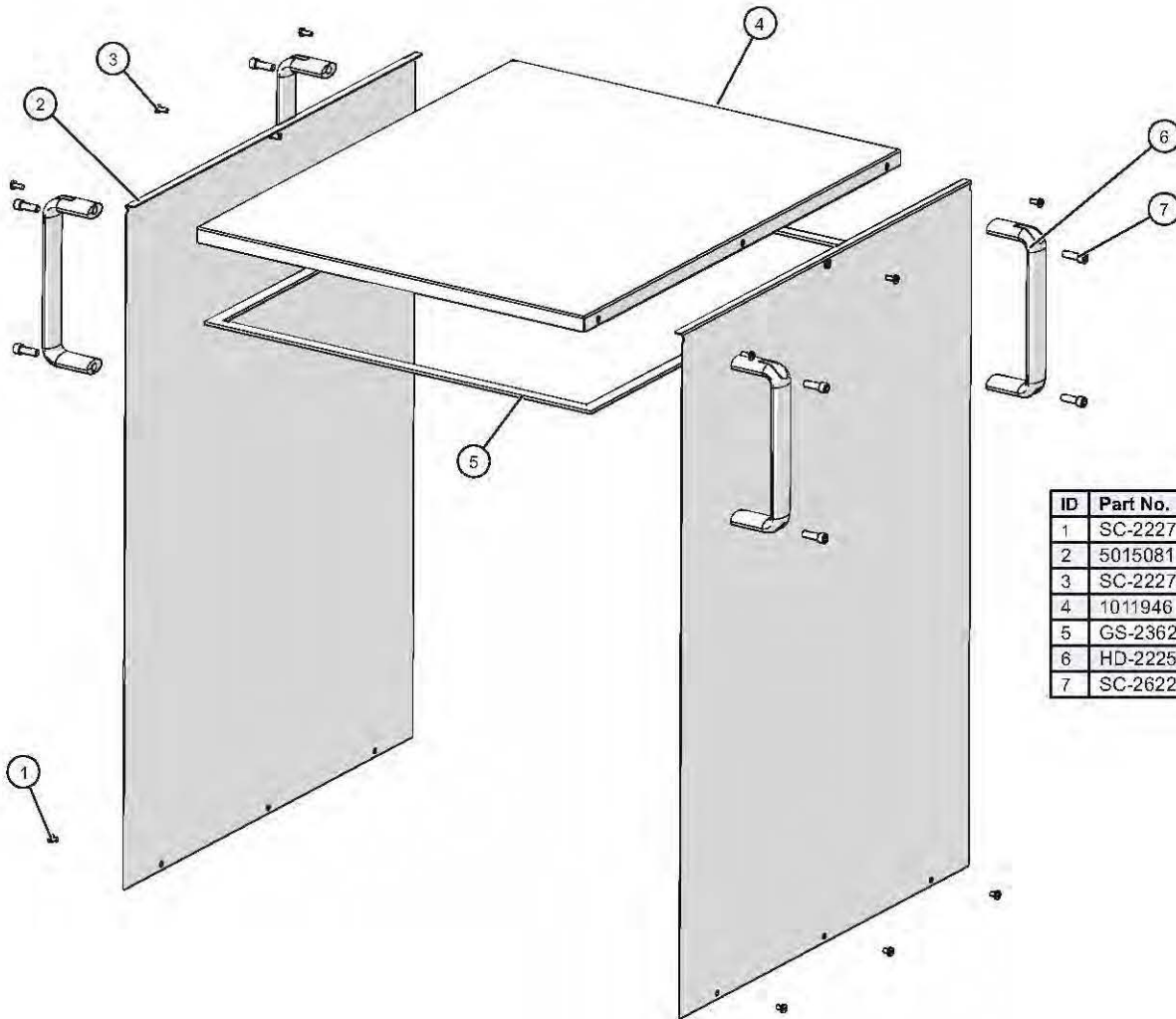
Non-OEM parts may be substituted; however, these parts must be of equal quality and specifications as those provided by Alto-Shaam.

Table of Contents

Manufacturer's Information.....	2
Table of Contents	3
500-S Exterior Panel Package "A", Reach-In	4
500-S Exterior Panel Package "C", Reach-In (Custom Color)	5
500-S Core Assembly, Reach-In, Simple.....	6
500-S Core Assembly, Reach-In, Deluxe	7
Heating Wire Service Kits.....	8
500-S Chassis Assembly, Manual 120V	9
500-S Chassis Assembly, Manual 208/240V	10
500-S Chassis Assembly, Manual 230V	11
500-S Chassis Assembly, 120V Deluxe	12
500-S Chassis Assembly, 230V Deluxe	13
500-S Cavity Package.....	14
500-S Door Package "A", Reach-In	15
500-S Door Package "C", Reach-In (Custom Color).....	16
500-S Bumper (optional).....	17
500-S Bonnet Package "A", Manual 120V.....	18
500-S Bonnet Package "J", 120V Electric with Probe.....	19
500-S Electrical Chassis, 120V Manual	20
500-S Electrical Chassis, 208/240V Manual	21
500-S Electrical Chassis, 230V Manual	22
500-S Electrical Chassis, 120V Deluxe	23
500-S Electrical Chassis, 230V Deluxe	24
Control Assembly, Deluxe w/Timer	25
Control Assembly, Deluxe w/Probe.....	26
Control Assembly, Deluxe	27
Probe Assembly, Deluxe	28
Seal, No Probe.....	29
500-S Side Rack and Shelves (Domestic).....	30
500-S Side Rack and Shelves (International)	31
Cordset/Ferrule Assembly, NEMA 5-15P.....	32
Cordset/Ferrule Assembly, NEMA 5-20P.....	33
Cord, 12/3 with Ferrules, 12'	34
Cordset/Ferrule Assembly, SAA AS 3112-16P.....	35
Cordset Assembly, AS/NZS 3112.....	36
Cordset Assembly, AS/NZS 3112 2000	37
Cordset/Ferrule Assembly, NEMA 6-15P.....	38
Cordset/Ferrule Assembly, CEE-7/7	39
Cordset/Ferrule Assembly, BS 1363	40
Cordset/Ferrule Assembly, CH2-16P	41
Caster Package, 2-1/2"	42
Caster Package, 3-1/2"	43

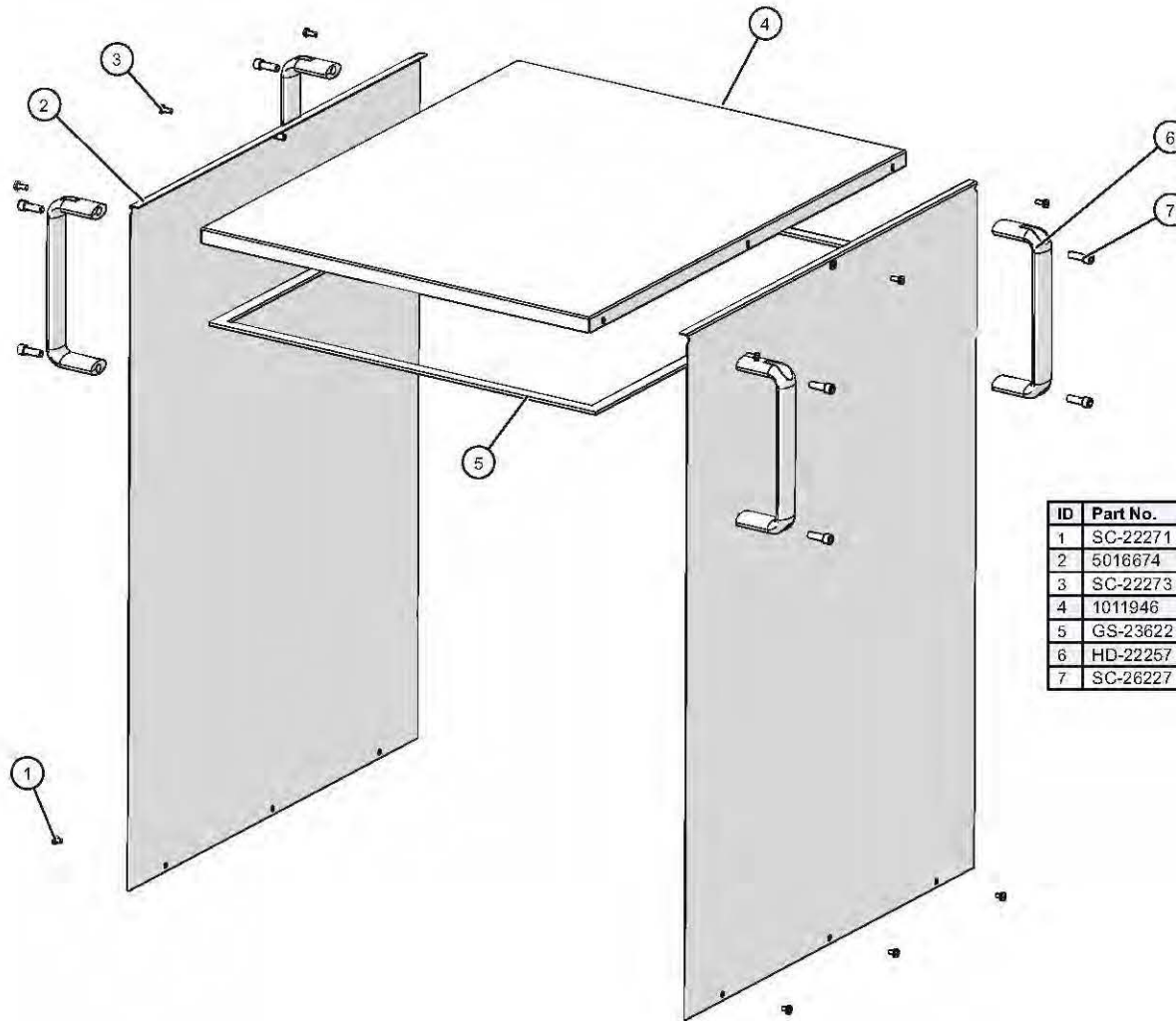
Caster Package, 5"	44
Caster Package, 5" (all swivel).....	45

500-S Exterior Panel Package "A", Reach-In



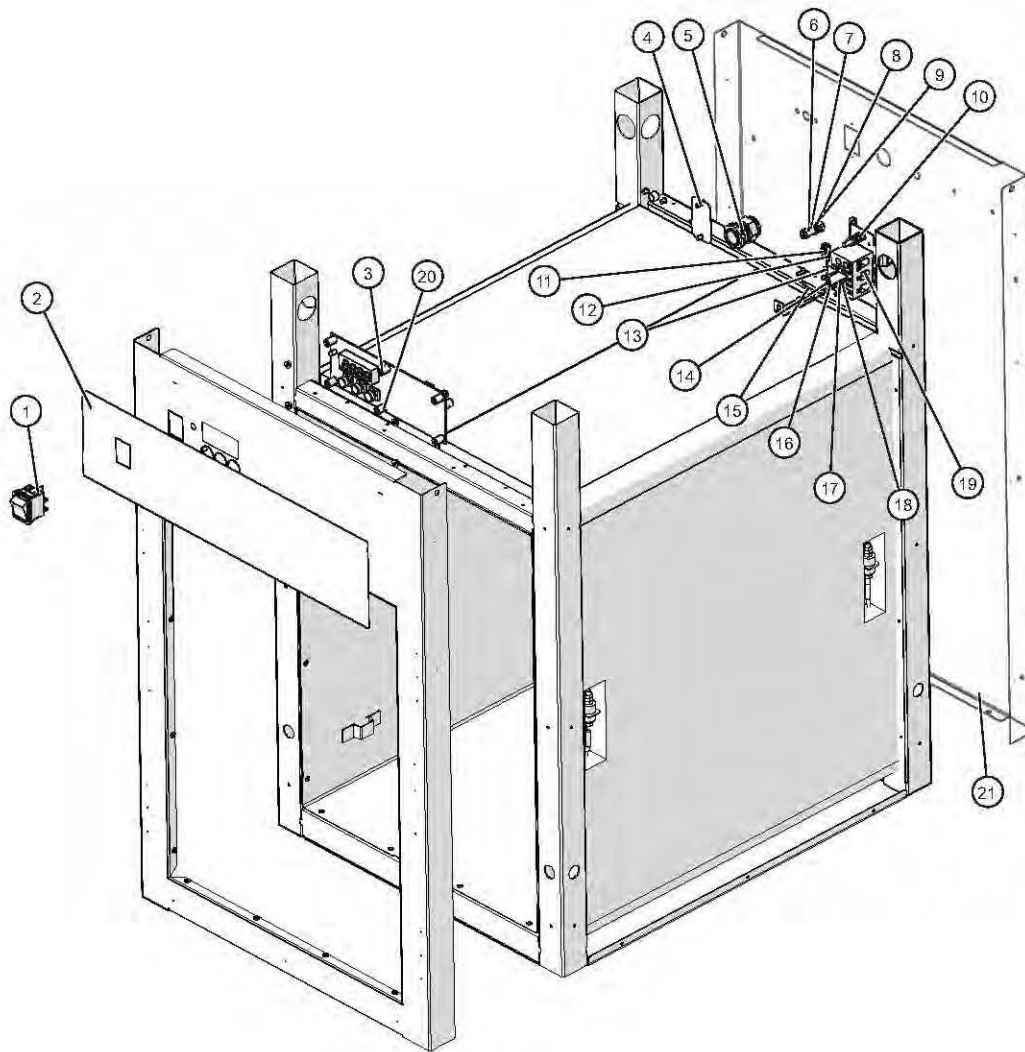
ID	Part No.	Description	Qty
1	SC-22271	SCREW, M4x0.7X6MM PAN	6
2	5015081	500 SERIES SIDE PANEL SUB ASSB	2
3	SC-22273	SCREW, M4x0.7X10MM PAN	6
4	1011946	TOP COVER 500-S	1
5	GS-23622	GASKET, ADHESIVE, 0.125" X 0.375" X 78"	1
6	HD-22257	HANDLE, U-SHAPE (optional)	4
7	SC-26227	SCREW, 1/4-20X3/4" SCH (optional)	8

500-S Exterior Panel Package "C", Reach-In (Custom Color)



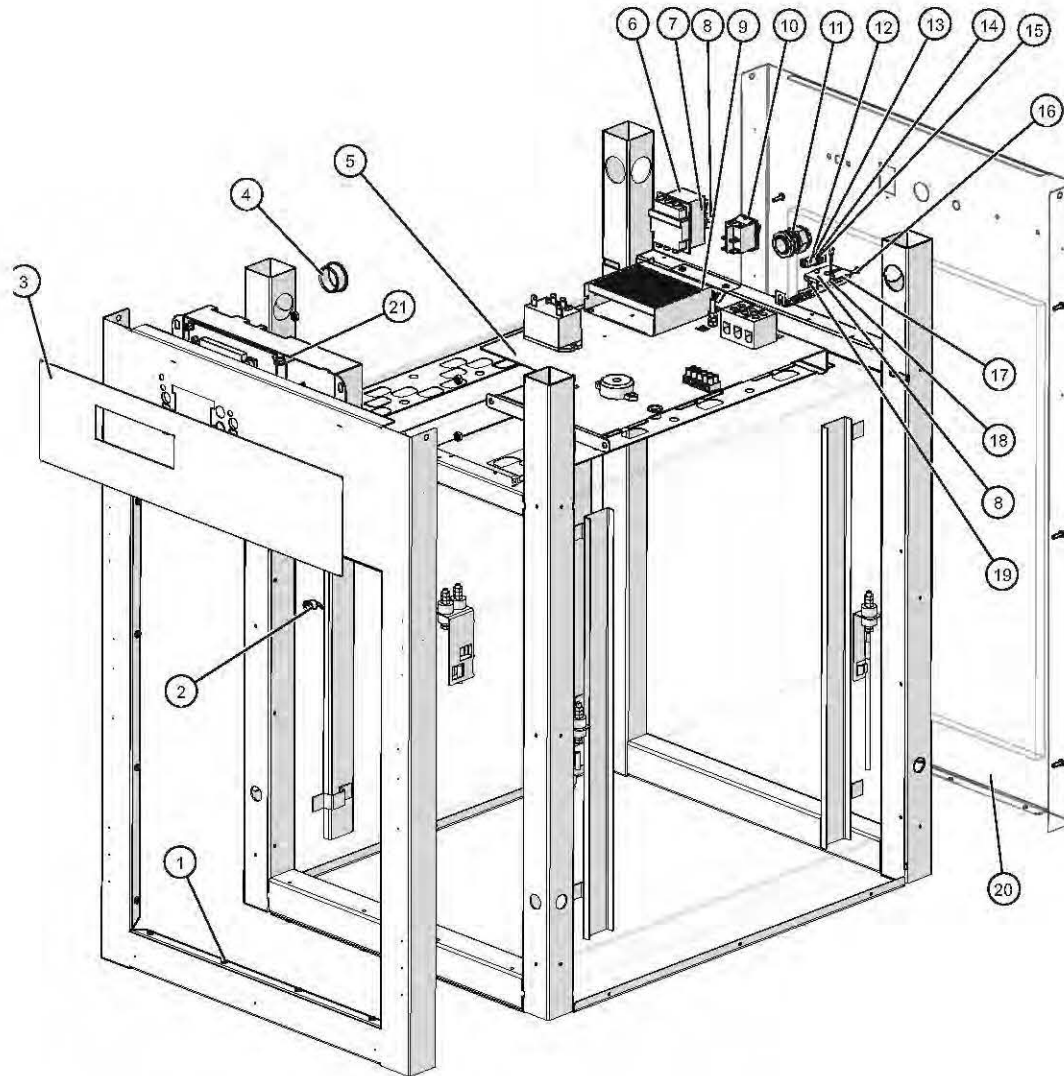
ID	Part No.	Description	Qty
1	SC-22271	SCREW,M4x0.7X6MM PAN	6
2	5016674	500 SERIES SIDE PANEL SUB ASSB CUST COLOR	2
3	SC-22273	SCREW,M4x0.7X10MM PAN	6
4	1011946	TOP COVER 500-S	1
5	GS-23622	GASKET, ADHESIVE, 0.125" X 0.375" X 78"	1
6	HD-22257	HANDLE, U-SHAPE (optional)	4
7	SC-26227	SCREW, 1/4-20X3/4" SCH (optional)	8

500-S Core Assembly, Reach-In, Simple



ID	Part No.	Description	Qty
1	SW-38665	SWITCH,ROCKER,DPST,20A,125V,	1
2	PE-47890	OVERLAY, DISPLAY, ELAN '10	1
3	5034317	CONTROL ASSY,SIMPLE,SINGLES	1
4	1011697	BREAKER SWITCH CUTOUT COVER	1
5	BU-3964	BUSHING,STRAIGHT,STRAIN RELIEF	1
6	NU-22770	NUT, THREADED INSERT, M6	1
7	WS-22297	WASHER, FLAT	2
8	SC-22924	HHCS, M6 X 20, W/NO MARKING	1
9	WS-22302	WASHER, SPLIT LOCK	2
10	BK-3019	T-BLOCK	1
11	CR-34502	CONNECTOR, HOUSING, 2 PORTS	1
12	CR-34503	CONNECTOR, RECTANGULAR CONTACTS	2
13	SN-47162	SENSOR, 1000 OHM, 40" WIRE	1
14	BK-29605	BLOCK, SENSOR, ELEC. CONTROL	1
15	1493	GUARD SENSOR,W/MW	1
16	SC-22271	M4 X 6MM PH PAN HD M/S .7	2
17	NU-2361	NUT, 6-32 HEX, S/S	2
18	WS-23424	WASHER, FLAT, #8, 18-8 SST	2
19	SC-47136	SCREW,6-32X1-1/2" PAN	2
20	SP-29392	SPACER, SNAP-IN, 7/16"	6
21	1037628	TRIM,REAR	1

500-S Core Assembly, Reach-In, Deluxe



ID	Part No.	Description	Qty
1	RI-27108	RIVET, SEALED	18
2	SW-33559	SWITCH, REED, SPST	1
3	PE-27934	500-S ELECTRONIC CONT OVERLAY	1
4	BU-3378	1 1/8" SNAP BUSHING	1
5	5034305	DELUXE CHASSIS, SINGLE WARMER	1
6	TT-33476	THERMOSTAT, 300F HI-LIMIT	1
7	1003936	HI-LIMIT PROTECTION COVER	1
8	SC-22271	M4 X 6MM PH PAN HD M/S .7	4
9	1010119	HI-LIMIT BULB HOLDER	1
10	SW-38665	SWITCH,ROCKER,DPST,20A,125V,	1
11	BU-3964	BUSHING,STRAIGHT,STRAIN RELIEF	1
12	NU-22770	NUT, THREADED INSERT, M6	1
13	WS-22297	WASHER, FLAT	2
14	WS-22302	WASHER, SPLIT LOCK	2
15	SC-22924	HHCS, M6 X 20, W/NO MARKING	1
16	RI-38125	RIVET,SEALED,.125"	2
17	SN-38110	SENSOR, 100 OHM, 110" WIRE,	1
18	BK-29605	BLOCK, SENSOR, ELEC. CONTROL	1
19	1493	GUARD SENSOR, W/MW	1
20	1037628	TRIM, REAR	1
21	CC-34322	ELECTRONIC WARMER CONTROL	1

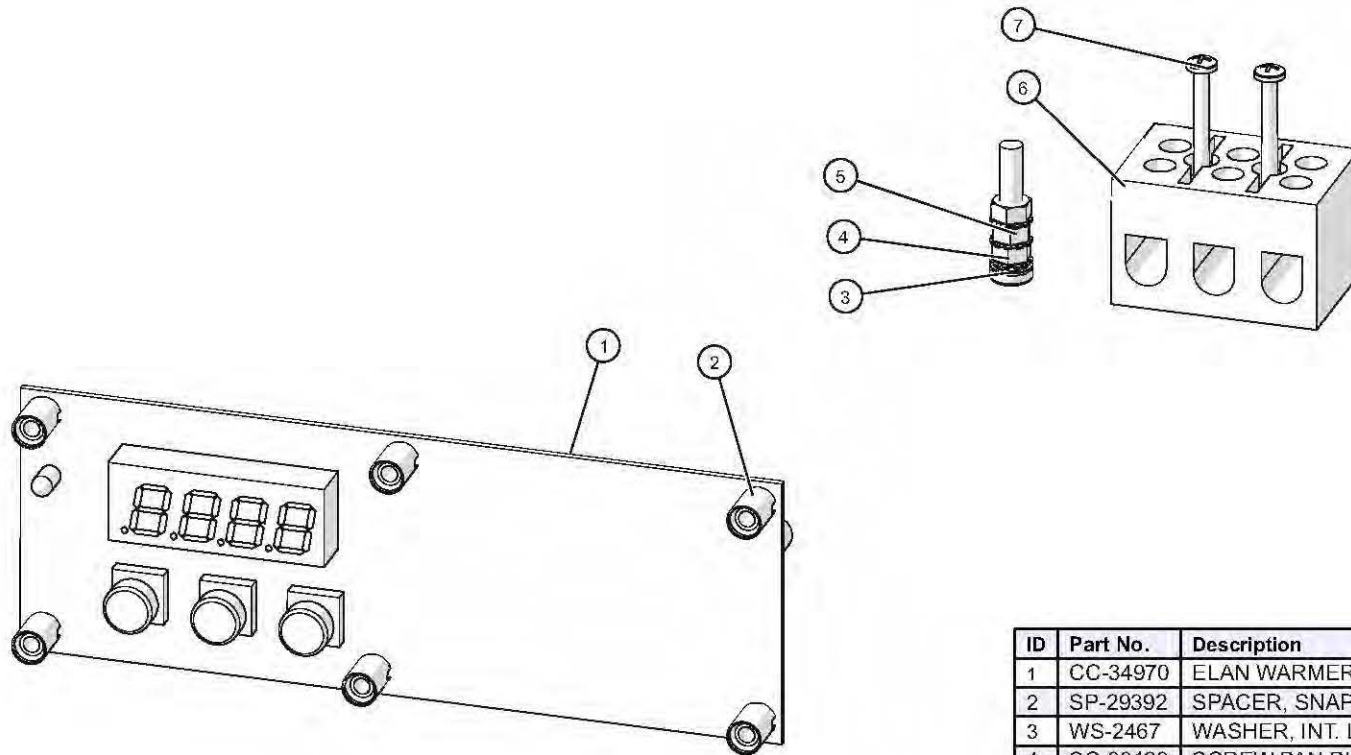
Heating Wire Service Kits

Cable Heating Kit > (One kit required per compartment)		#4874 (500, 750, 1000)	#4881 (1200 - 4000W)	#4878 (1200 - all but 4000W)
Part No.	Description	Qty	Qty	Qty
CB-3045	Cable Heating Element	—	210 feet (6401cm)	90 feet (2591cm)
CB-3044	Cable Heating Element	120 feet (3658cm)	—	—
CR-3226	Ring Connector	4	12	4
IN-3488	Insulation Corner	1 foot (30,5cm)	1 foot (30,5cm)	1 foot (30,5cm)
BU-3105	Shoulder Bushing	4	12	4
BU-3106	Cup Bushing	4	12	4
ST-2439	Stud	4	12	4
NU-2215	Hex Nut	8	24	8
SL-3063	Insulating Sleeve	4	12	4
TA-3540	Electrical Tape	1 roll	1 roll	1 roll

For heating wire replacement instructions, scan the QR code below.

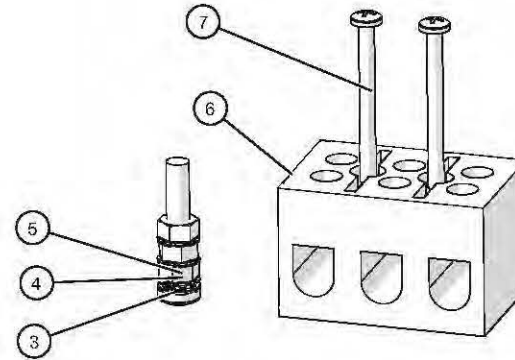
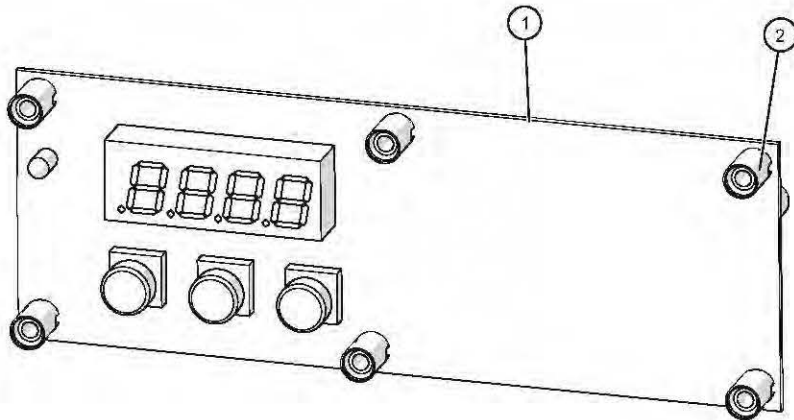


500-S Chassis Assembly, Manual 120V



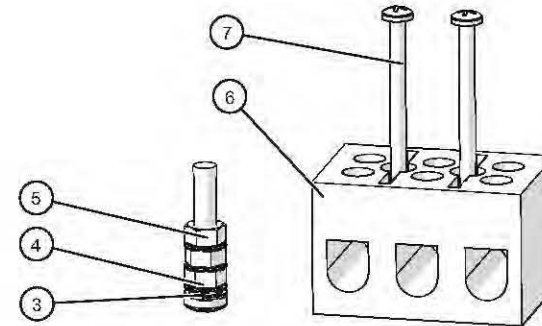
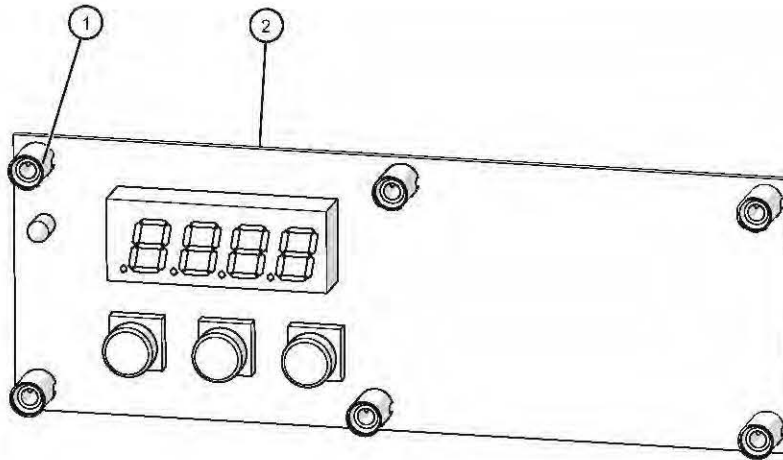
ID	Part No.	Description	Qty
1	CC-34970	ELAN WARMER CONTROL	1
2	SP-29392	SPACER, SNAP-IN, 7/16"	6
3	WS-2467	WASHER, INT. LOCK	1
4	SC-38128	SCREW,PAN PH, METRIC, M5	1
5	NU-36234	NUT, M5, KEPS	3
6	BK-3019	T-BLOCK	1
7	SC-47136	SCREW,6-32X1-1/2" PAN	2

500-S Chassis Assembly, Manual 208/240V



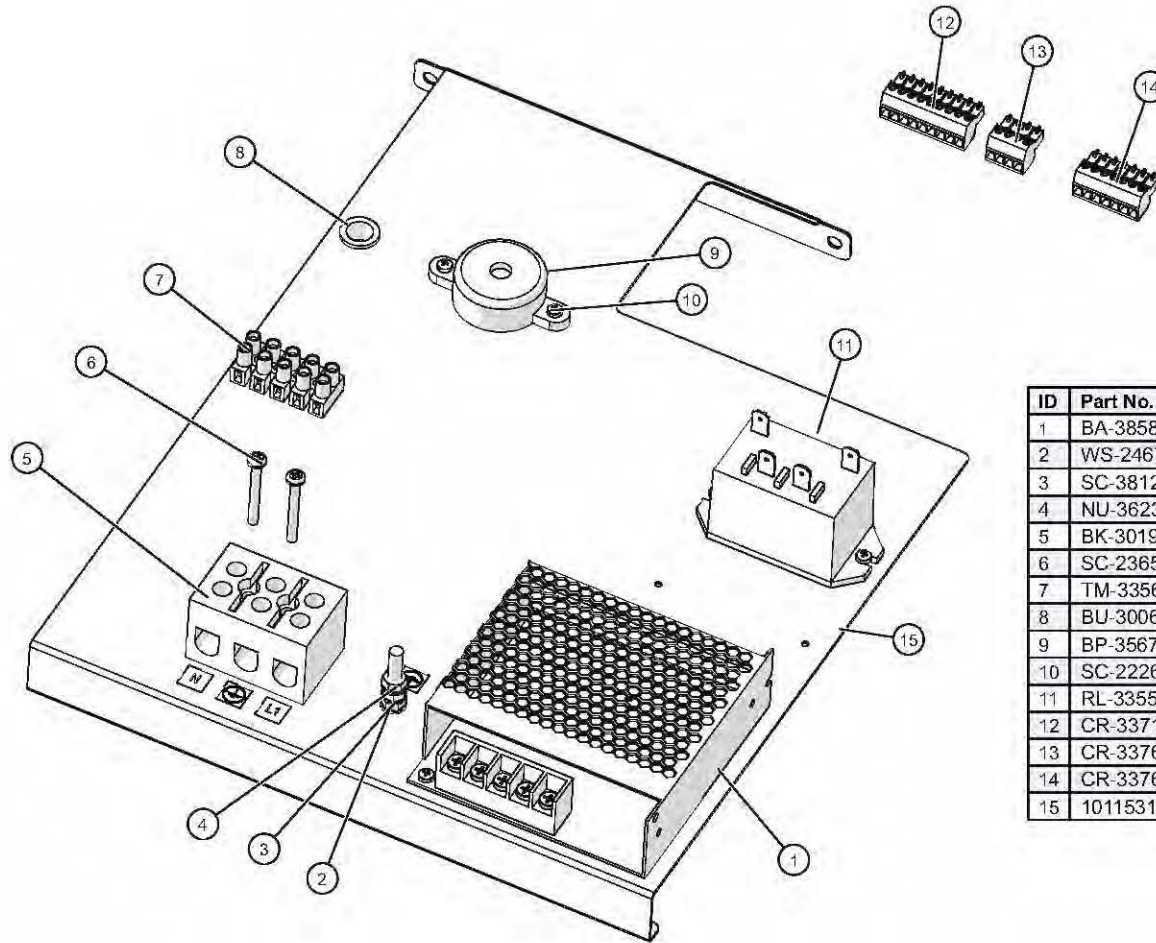
ID	Part No.	Description	Qty
1	CC-34970	ELAN WARMER CONTROL	1
2	SP-29392	SPACER, SNAP-IN, 7/16"	6
3	WS-2467	WASHER, INT. LOCK	1
4	SC-38128	SCREW,PAN PH, METRIC, M5	1
5	NU-36234	NUT, M5, KEPS	3
6	BK-3019	T-BLOCK	1
7	SC-47136	SCREW,6-32X1-1/2" PAN	2

500-S Chassis Assembly, Manual 230V



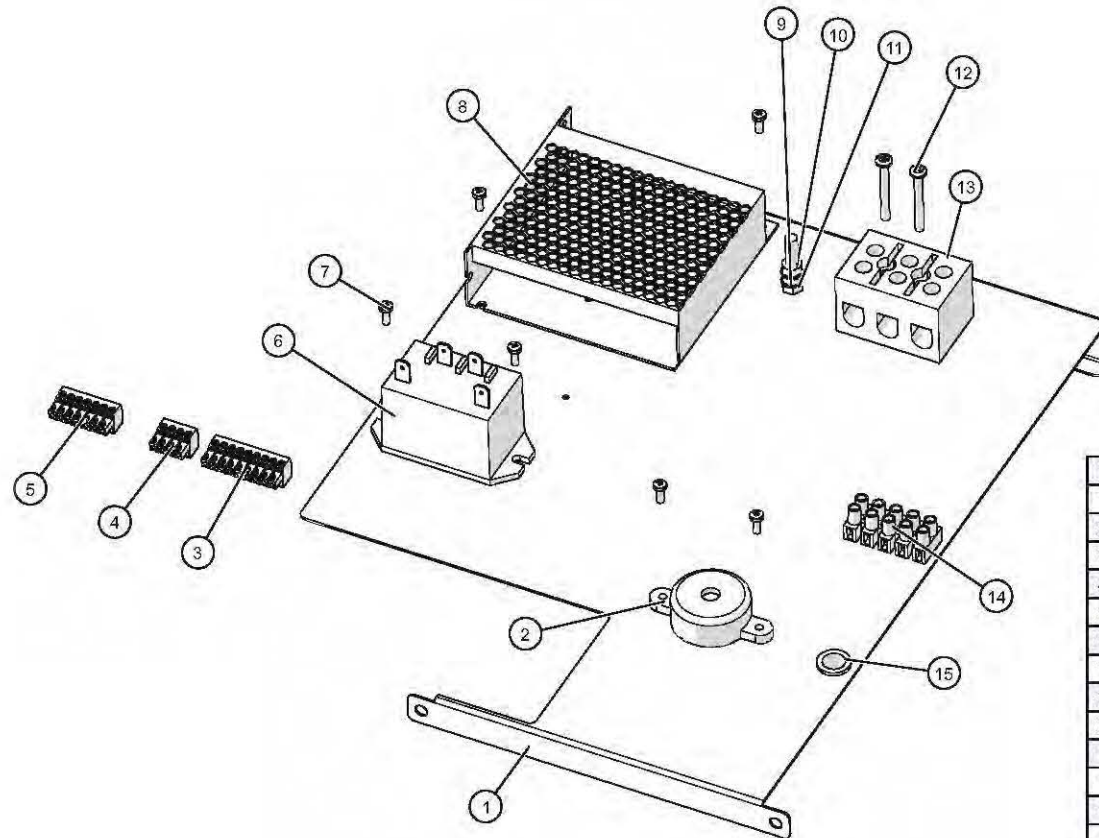
ID	Part No.	Description	Qty
1	SP-29392	SPACER, SNAP-IN, 7/16"	6
2	CC-34970	ELAN WARMER CONTROL	1
3	WS-2467	WASHER, INT. LOCK	1
4	SC-38128	SCREW,PAN PH, METRIC, M5	1
5	NU-36234	NUT, M5, KEPS	3
6	BK-3019	T-BLOCK	1
7	SC-47136	SCREW,6-32X1-1/2" PAN	2

500-S Chassis Assembly, 120V Deluxe



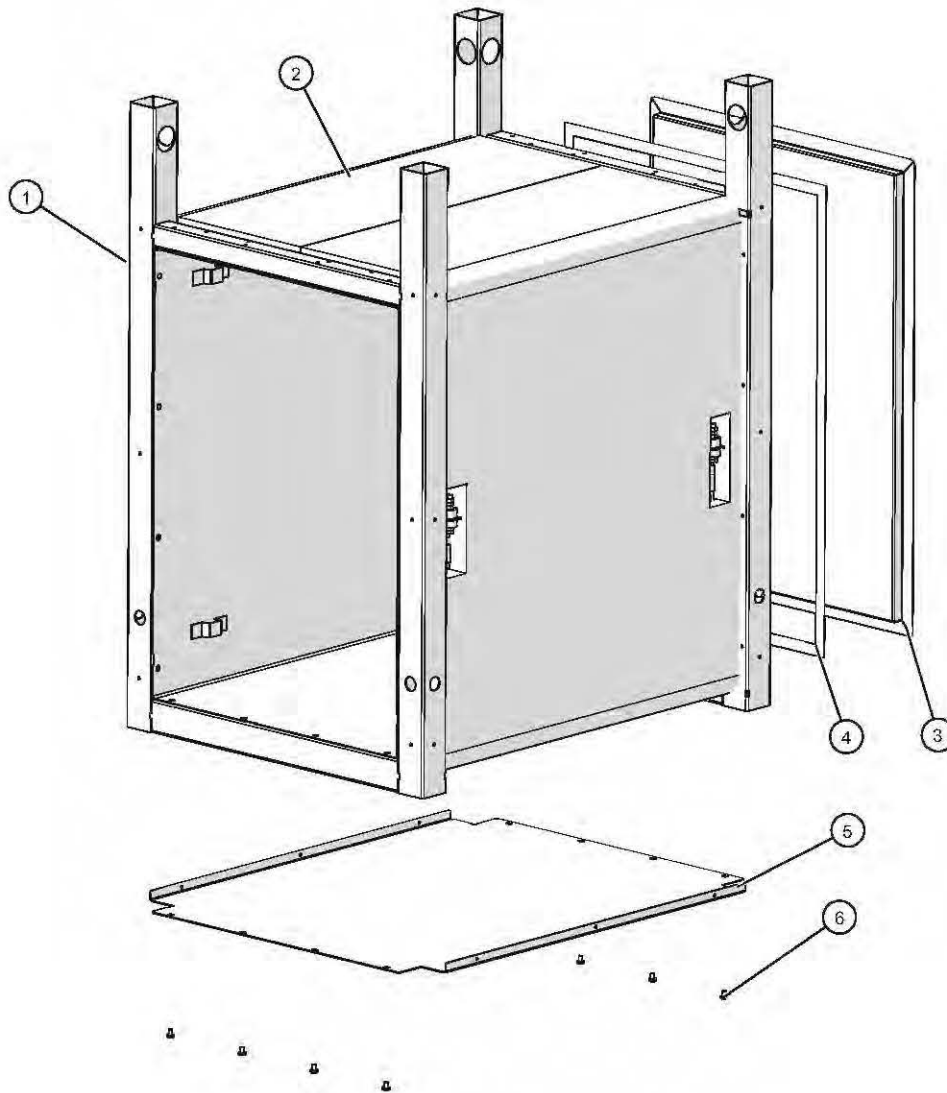
ID	Part No.	Description	Qty
1	BA-38586	BOARD, POWER SUPPLY, 12V	1
2	WS-2467	WASHER, INT. LOCK	1
3	SC-38128	SCREW,PAN PH. METRIC, M5	1
4	NU-36234	NUT, M5, KEPS	3
5	BK-3019	T-BLOCK	1
6	SC-2365	SCREW,6-32X1-1/4,NC PHILLIPS	2
7	TM-33560	TERMINAL,STRIP,5CIRCUIT,UL,VDE	1
8	BU-3006	1/2" HOLE BUSHING	1
9	BP-3567	BEEPER, SOLID STATE, 1.5-20V	1
10	SC-22268	SCREW,M3x0.5X8MM PAN	6
11	RL-33558	RELAY, SPST 30A @ 277 VAC 12VDC	1
12	CR-33718	CONNECTOR 9 PIN	1
13	CR-33763	CONNECTOR 4 PIN	1
14	CR-33761	CONNECTOR, 7 PIN	1
15	1011531	WARMER SERIES ELEC CHASSIS	1

500-S Chassis Assembly, 230V Deluxe



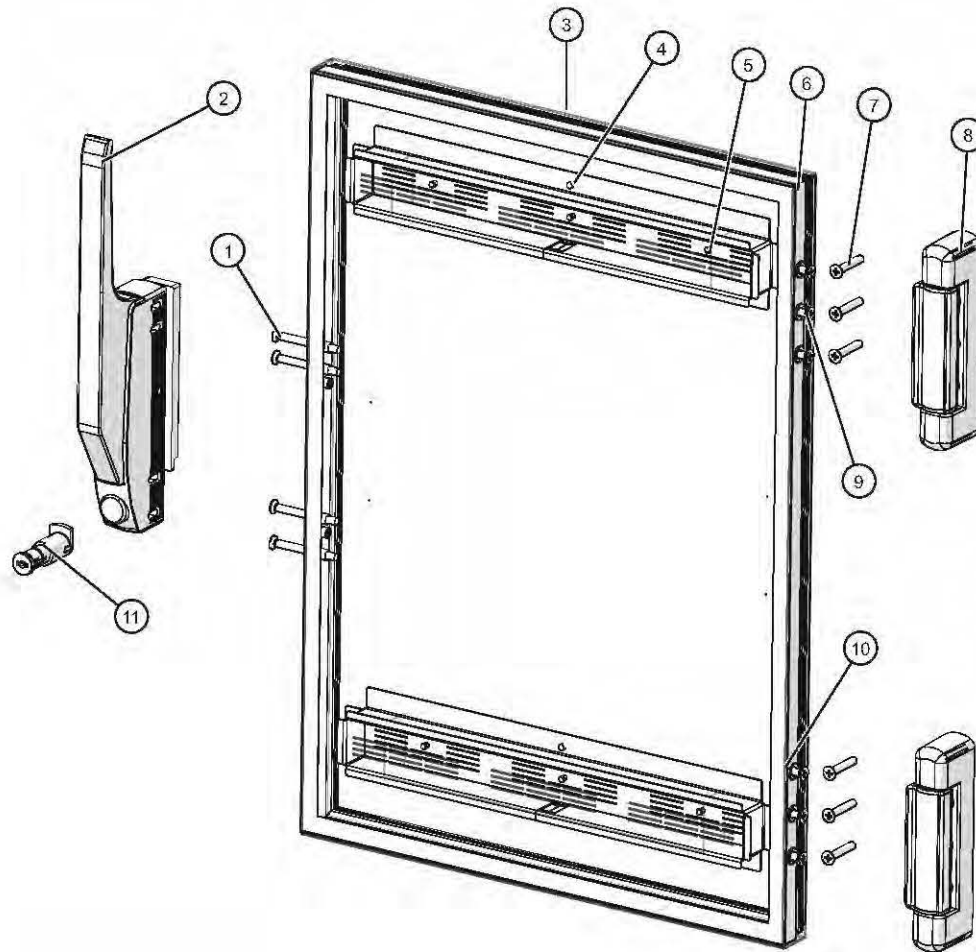
ID	Part No.	Description	Qty
1	1011531	WARMER SERIES ELEC CHASSIS	1
2	BP-3567	BEEPER, SOLID STATE, 1.5-20V	1
3	CR-33718	CONNECTOR 9 PIN	1
4	CR-33763	CONNECTOR 4 PIN	1
5	CR-33761	CONNECTOR, 7 PIN	1
6	RL-33558	RELAY, SPST 30A @ 277 VAC 12VDC	1
7	SC-22268	SCREW, M3x0.5X8MM PAN	6
8	BA-38586	BOARD, POWER SUPPLY, 12V	1
9	SC-38128	SCREW, PAN PH, METRIC, M5	1
10	NU-36234	NUT, M5, KEPS	3
11	WS-2467	WASHER, INT. LOCK	1
12	SC-2365	SCREW, 6-32X1-1/4, NC PHILLIPS	2
13	BK-3019	T-BLOCK	1
14	TM-33560	TERMINAL, STRIP, 5CIRCUIT, UL, VDE	1
15	BU-3006	1/2" HOLE BUSHING	1

500-S Cavity Package



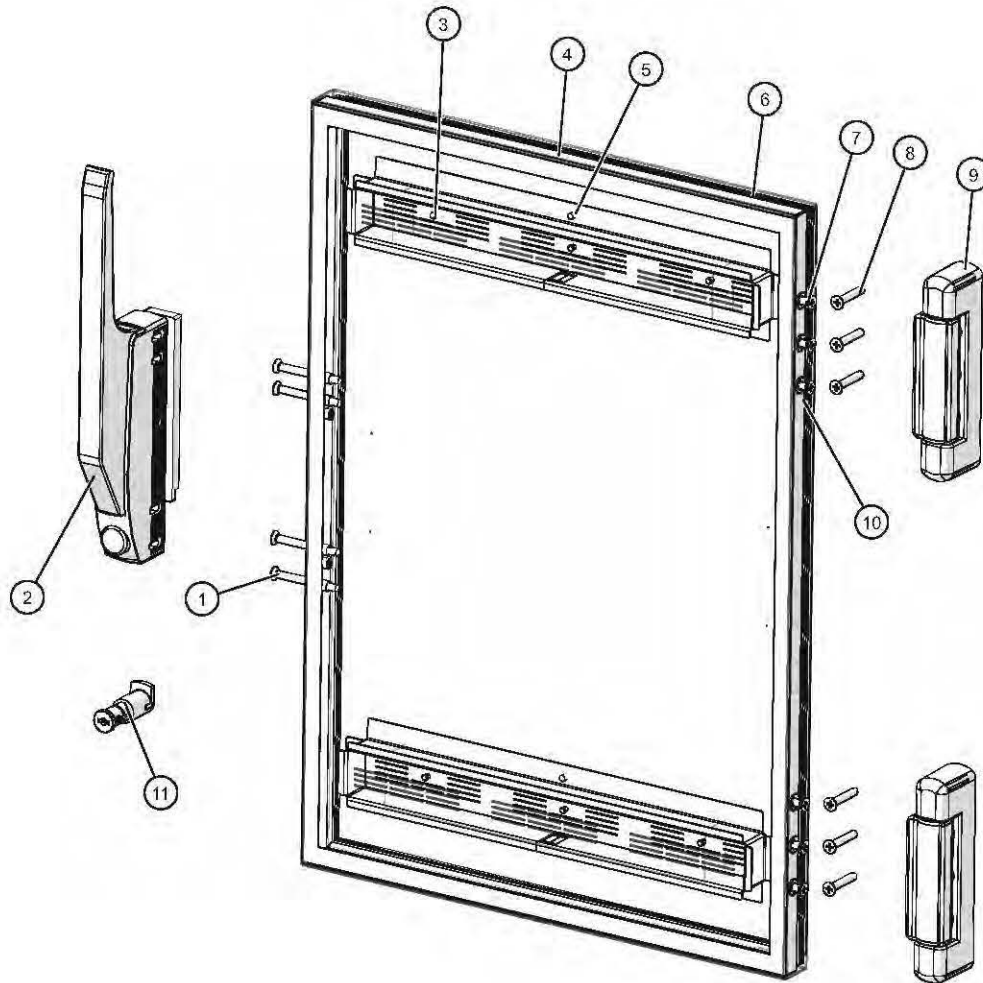
ID	Part No.	Description	Qty
1	5013100	500-S CABLE INSULATION ASSB	1
2	IN-22364	INSULATION @ 24" x 79"	1
3	1011938	500-S, INNER BACK PANEL	1
4	TA-24637	TAPE 0.5" WIDE X 25 MIL VHB	1
5	1010774	BOTTOM PANEL 500-S 500-TH	1
6	SC-22271	SCREW, M4x0.7X6MM PAN	8

500-S Door Package "A", Reach-In



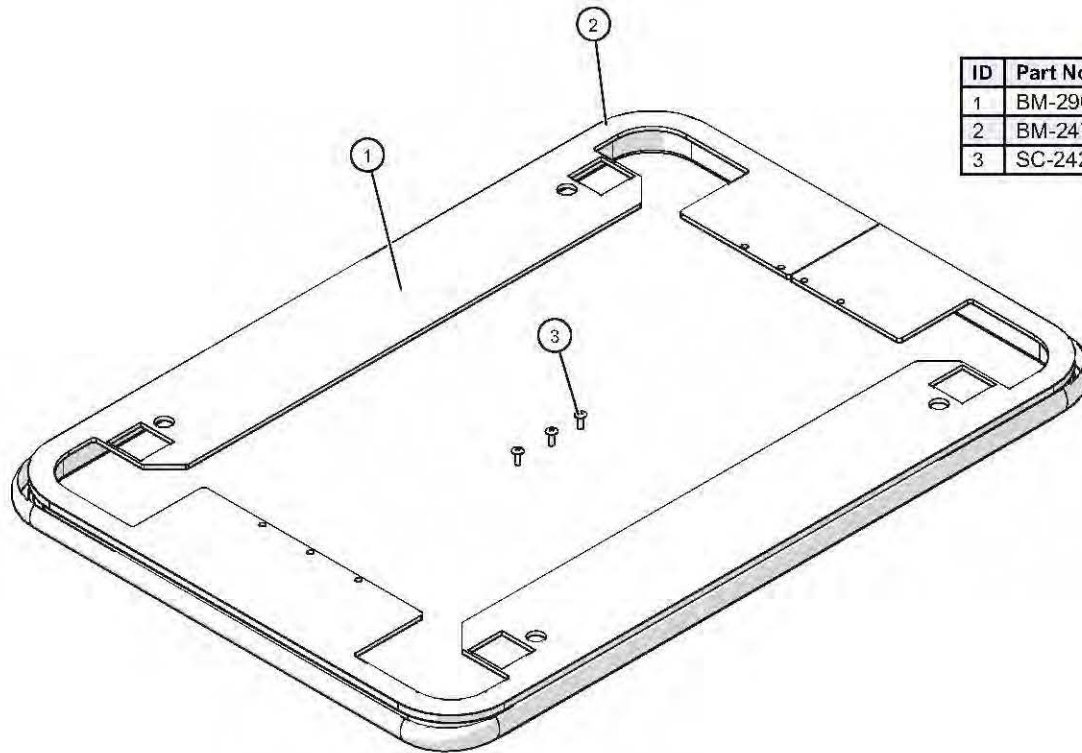
ID	Part No.	Description	Qty
1	SC-35259	SCREW,M5x0.8X50MM FLAT	4
2	HD-27080 (RH)	HANDLE,OFFSET MAG LATCH	1
3	5013132	500-S DOOR ASSEMBLY	1
4	SC-22271	SCREW,M4x0.7X6MM PAN	8
5	RI-2094	RIVET,BLIND,#43,LRG FLG,STNLS,	6
6	GS-22950	GASKET,ASSB,LOW WING,DOOR,	1
7	SC-22853	SCREW,M5x0.8X30MM FLAT	6
8	HG-22338	HINGE, 1-3/8 OFFSET, PAIR, CHROME	1
9	SC-23868	SCREW,M5x0.8X20MM FLAT	6
10	NU-37268	NUT, HEX INSERT M5	12
11	LK-22567	LOCK,CYLINDER (optional)	1

500-S Door Package "C", Reach-In (Custom Color)



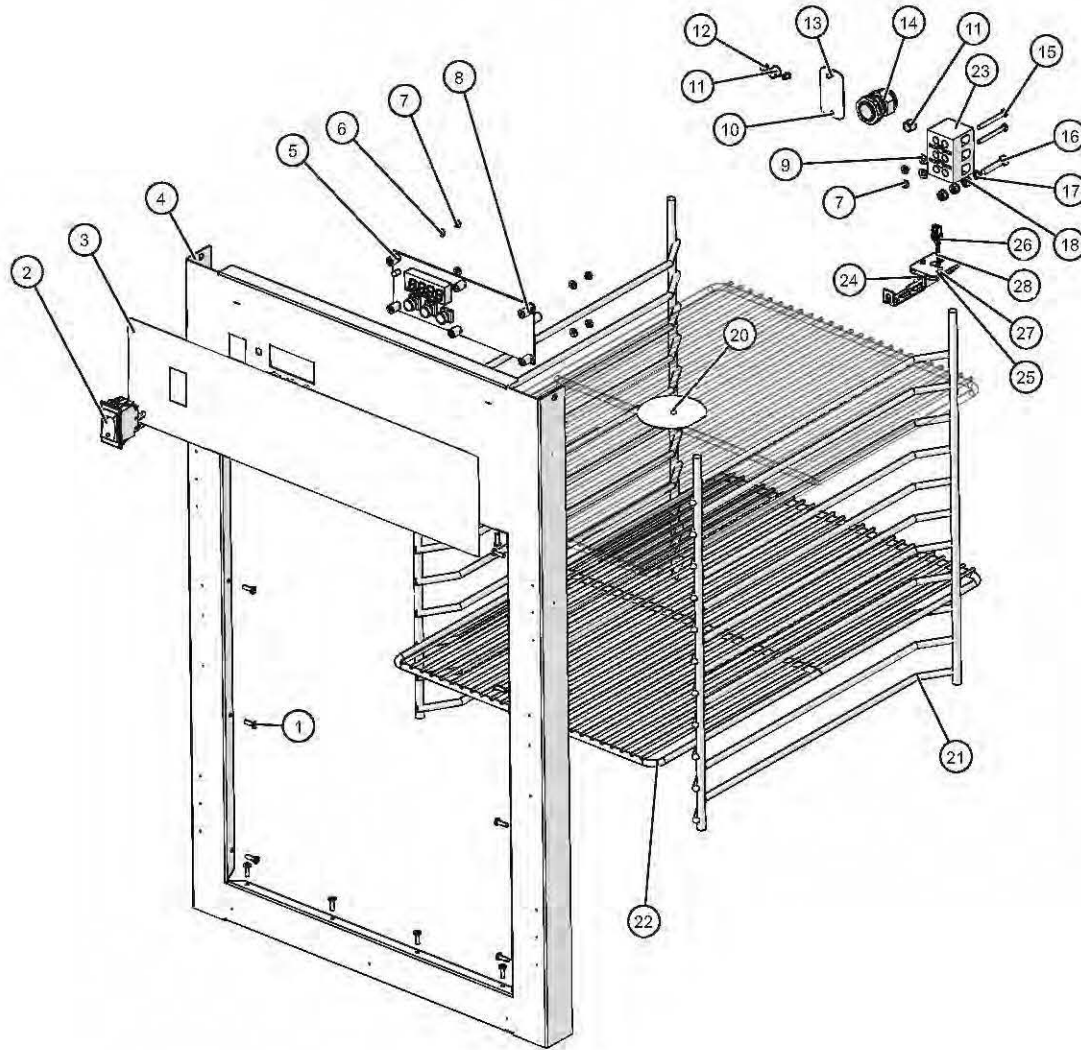
ID	Part No.	Description	Qty
1	SC-35259	SCREW,M5x0.8X50MM FLAT	4
2	HD-27080 (RH)	HANDLE,OFFSET MAG LATCH	1
3	RI-2094	RIVET,BLIND,#43,LRG FLG,STNLS.	6
4	5013132	500-S DOOR ASSEMBLY	1
5	SC-22271	SCREW,M4x0.7X6MM PAN	8
6	GS-22950	GASKET,ASSB,LOW WING,DOOR,	1
7	SC-23868	SCREW,M5x0.8X20MM FLAT	6
8	SC-22853	SCREW,M5x0.8X30MM FLAT	6
9	HG-22338	HINGE, 1-3/8 OFFSET, PAIR, CHROME	1
10	NU-37268	NUT, HEX INSERT M5	12
11	LK-22567	LOCK,CYLINDER (optional)	1

500-S Bumper (optional)



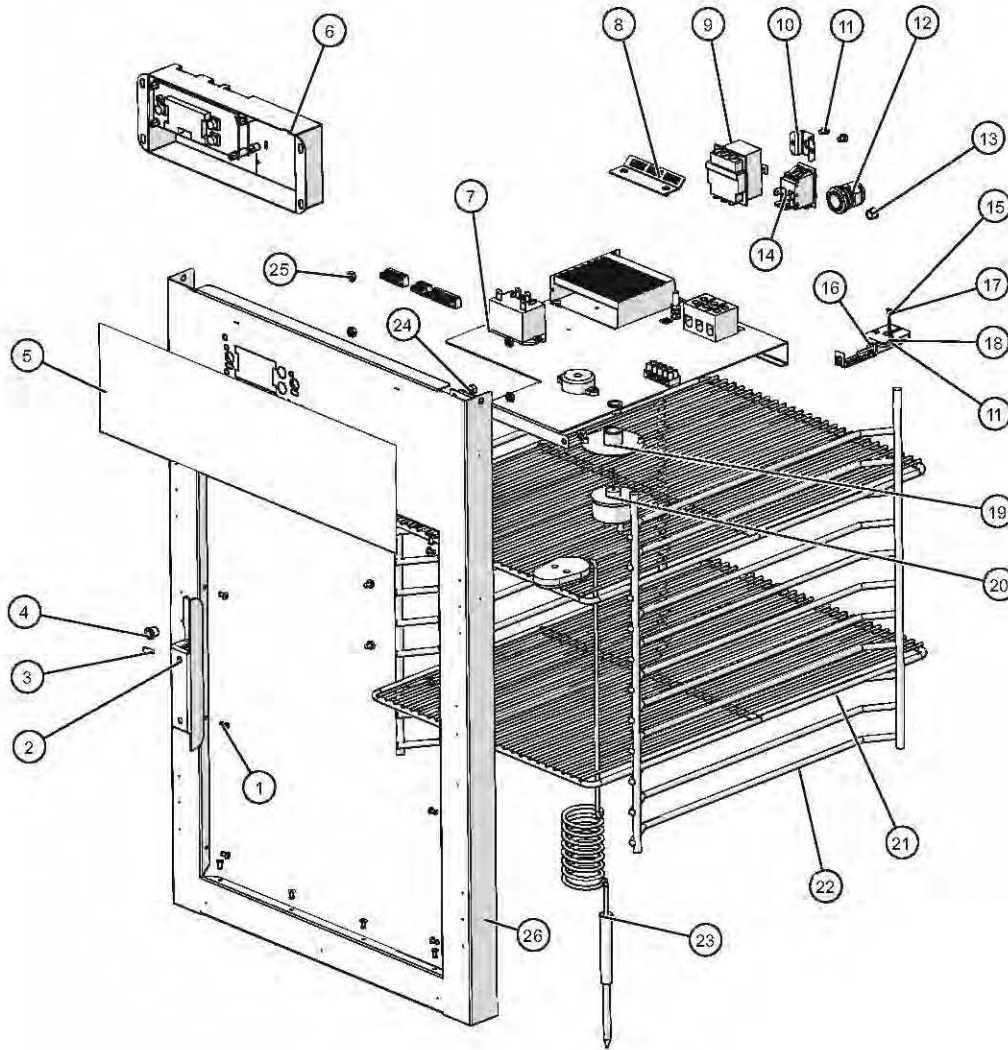
ID	Part No.	Description	Qty
1	BM-29061	500 SERIES BUMPER	1
2	BM-24766	BUMPER, PERIMETER, RUBBER	1
3	SC-2425	8-32 x 1/2" PHIL SCREW	3

500-S Bonnet Package "A", Manual 120V



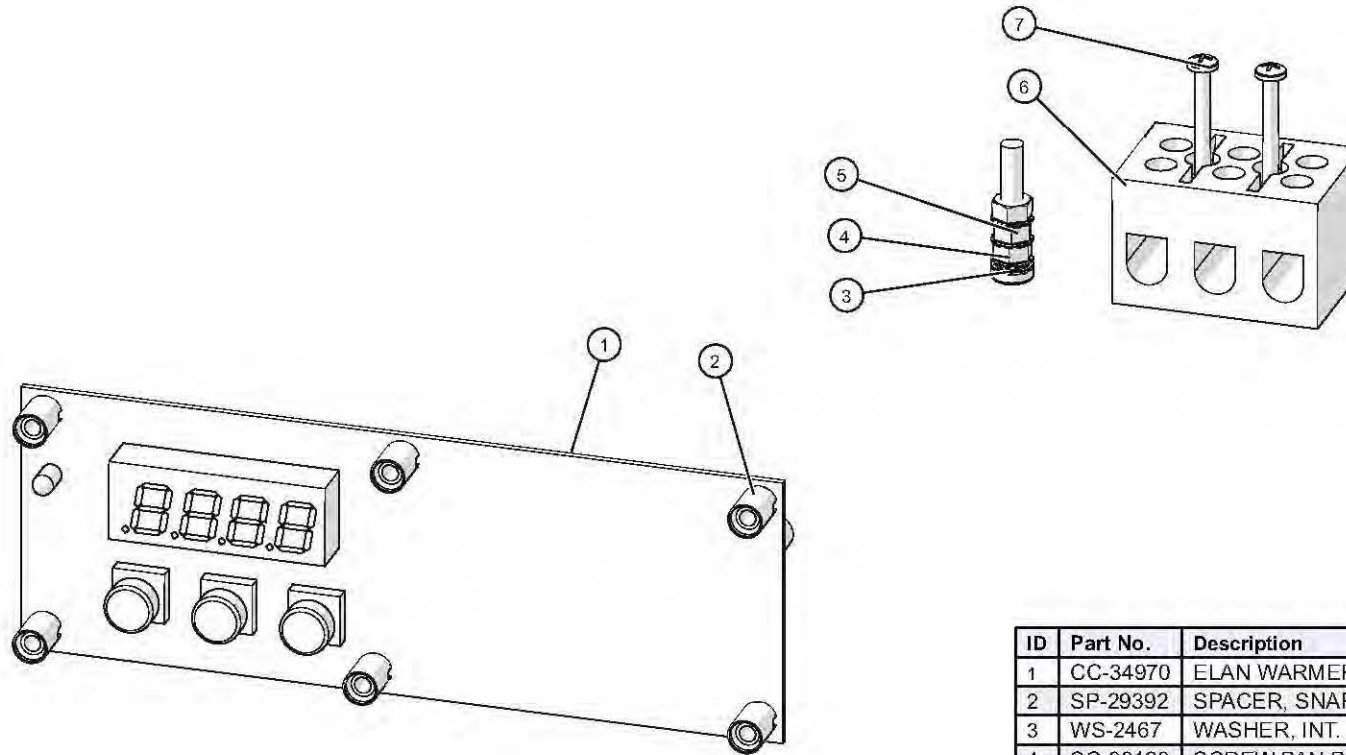
ID	Part No.	Description	Qty
1	RI-27108	RIVET, SEALED	16
2	SW-34769	SWITCH,ROCKER,125-277V,20A	1
3	PE-29399	PANEL, OVERLAY, 500-S ELAN	1
4	5013104	500-S ELAN FRONT TRIM STUD	1
5	SP-29392	SPACER, SNAP-IN, 7/16"	6
6	WS-23148	WASHER, 6-32, FLAT, NYL	4
7	NU-2361	NUT, 6-32 HEX, S/S	6
8	5012587	1000/1200-S MANUAL 120V	1
9	WS-23424	WASHER, FLAT, #8, 18-8 SST	2
10	SC-22271	SCREWS, M4-0.7X6MM PHIL	3
11	PG-25574	3/8" HOLE PLUG	2
12	PG-28439	PLUG, DOME, .187" HOLE	2
13	1011697	BREAKER SWITCH CUTOUT COVER	1
14	BU-3964	BUSHING, STRAIGHT, STRAIN RELIEF	1
15	SC-47136	SCREW, 6-32X1-1/2" PAN	2
16	SC-38128	SCREW, PAN PH, METRIC, M5	1
17	WS-2467	WASHER, INT. LOCK	1
18	NU-36234	NUT, M5, KEPS	3
20	1006871	NON-PRODUCT PROBE SEAL	1
21	SR-28402	NICKEL SIDE RACK	2
22	SH-2107	WIRE SHELF AND PAN GRID	2
23	BK-3019	T-BLOCK	1
24	1493	GUARD SENSOR, W/MW	1
25	BK-29605	BLOCK, SENSOR, ELEC. CONTROL	1
26	CR-34503	CONNECTOR, RECTANGULAR CONTACTS	2
27	SC-22271	SCREWS, M4-0.7X6MM PHIL	2
28	SN-38111	SENSOR, 1000 OHM, 110" WIRE	1

500-S Bonnet Package "J", 120V Electric with Probe



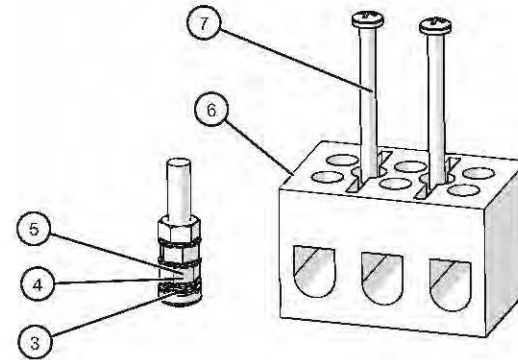
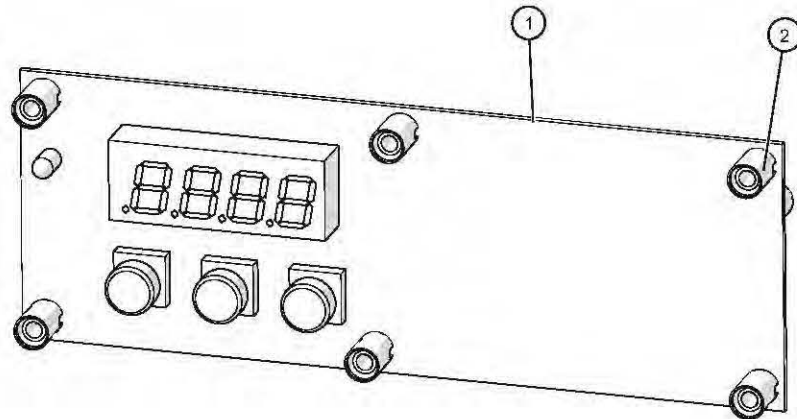
ID	Part No.	Description	Qty
1	RI-2100	RIVET,BLIND,#44,STNLS	18
2	13239	PROBE HOLDER, TH/III	1
3	SW-33559	SWITCH, REED, SPST	1
4	BU-3419	3/8" BLACK HOLE BUSHING	1
5	PE-27934	PANEL OVERLAY	1
6	5012946	SINGLE WARMER CONTROL	1
7	5012604	ELEC CHASSIS 120V	1
8	1010119	HI-LIMIT BULB HOLDER	1
9	TT-33476	THERMOSTAT, 300F HI-LIMIT	1
10	1003936	HI-LIMIT PROTECTION COVER	1
11	SC-22271	SCREW,M4x0.7X6MM PAN	8
12	BU-3964	BUSHING,STRAIGHT,STRAIN RELIEF	1
13	PG-25574	3/8" HOLE PLUG	1
14	SW-34769	SWITCH,ROCKER,125-277V,20A	1
15	SN-38111	SENSOR, 1000 OHM, 110" WIRE	1
16	1493	GUARD SENSOR,W/MW	1
17	CR-33625	CONNECTOR, FERRULE #20	2
18	BK-29605	BLOCK, SENSOR, ELEC. CONTROL	1
19	5009712	PROBE COVER WELDMENT	1
20	PR-34705	PROBE,RECEPTACLE,600MM WIRE	1
21	SH-2107	WIRE SHELF AND PAN GRID	2
22	SR-28402	NICKEL SIDE RACK	2
23	PR-36065	PROBE,QUICK CONNECT,PT100	1
24	NU-2296	NUT, HEX #8-32	2
25	NU-26526	NUT, #8-32 UNC KEPS ZP	4
26	5013109	500-S ELEC FRONT TRIM STUD	1

500-S Electrical Chassis, 120V Manual



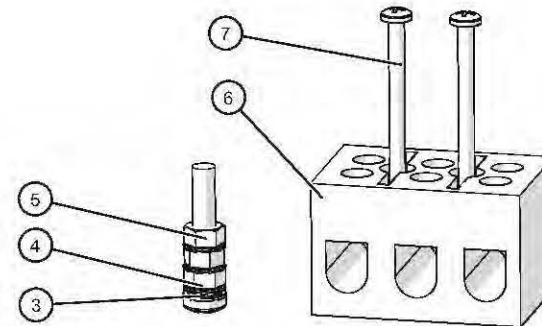
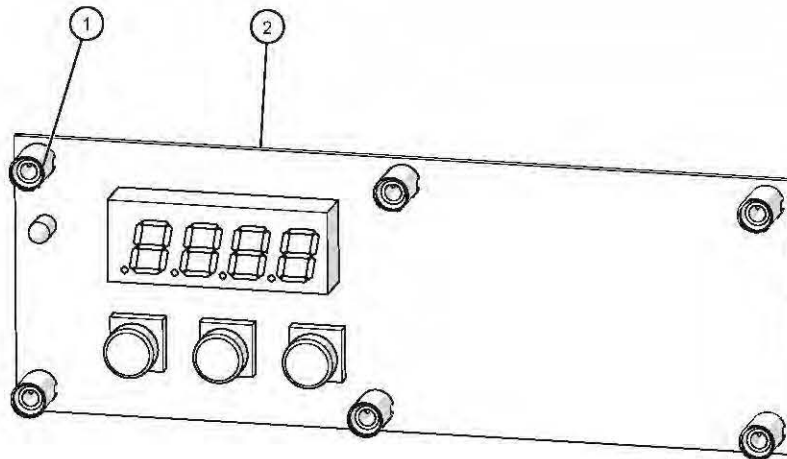
ID	Part No.	Description	Qty
1	CC-34970	ELAN WARMER CONTROL	1
2	SP-29392	SPACER, SNAP-IN, 7/16"	6
3	WS-2467	WASHER, INT. LOCK	1
4	SC-38128	SCREW,PAN PH, METRIC, M5	1
5	NU-36234	NUT, M5, KEPS	3
6	BK-3019	T-BLOCK	1
7	SC-47136	SCREW,6-32X1-1/2" PAN	2

500-S Electrical Chassis, 208/240V Manual



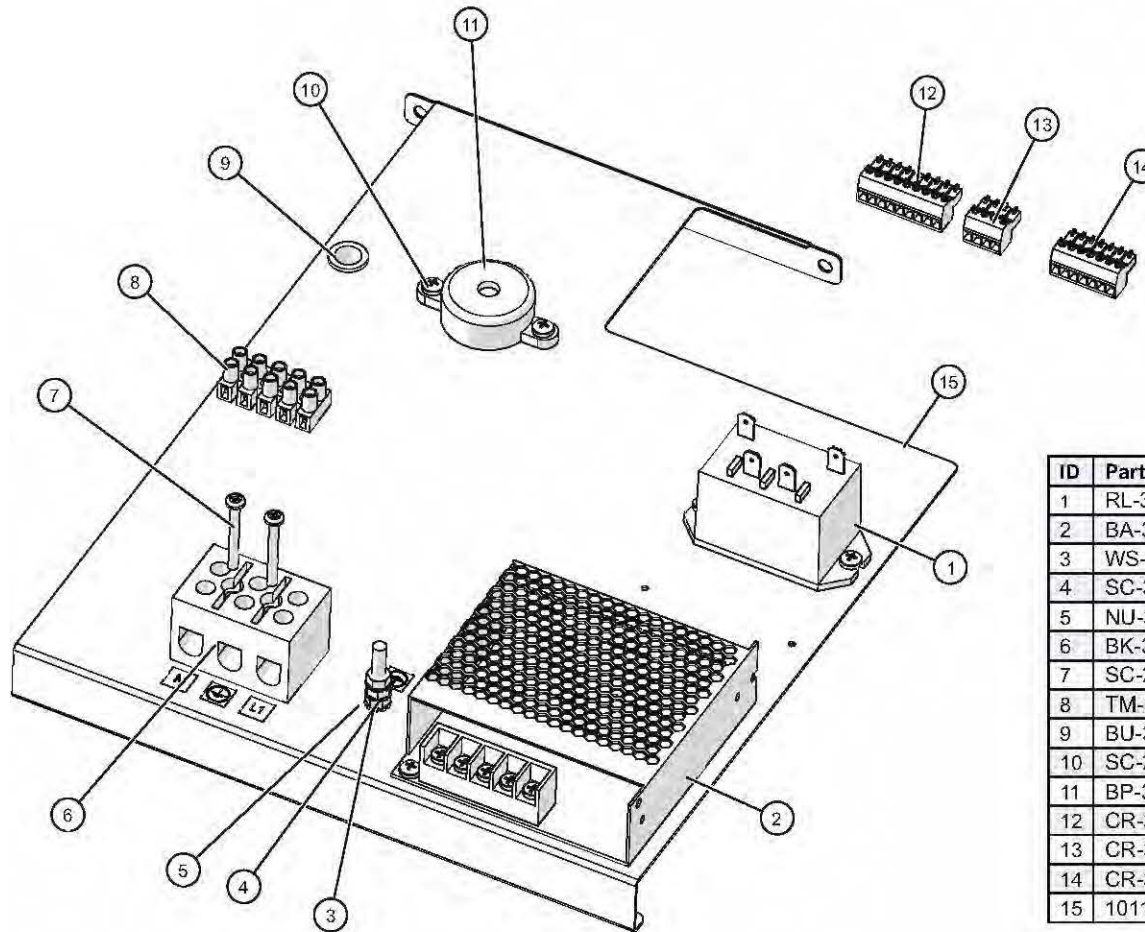
ID	Part No.	Description	Qty
1	CC-34970	ELAN WARMER CONTROL	1
2	SP-29392	SPACER, SNAP-IN, 7/16"	6
3	WS-2467	WASHER, INT. LOCK	1
4	SC-38128	SCREW,PAN PH, METRIC, M5	1
5	NU-36234	NUT, M5, KEPS	3
6	BK-3019	T-BLOCK	1
7	SC-47136	SCREW,6-32X1-1/2" PAN	2

500-S Electrical Chassis, 230V Manual



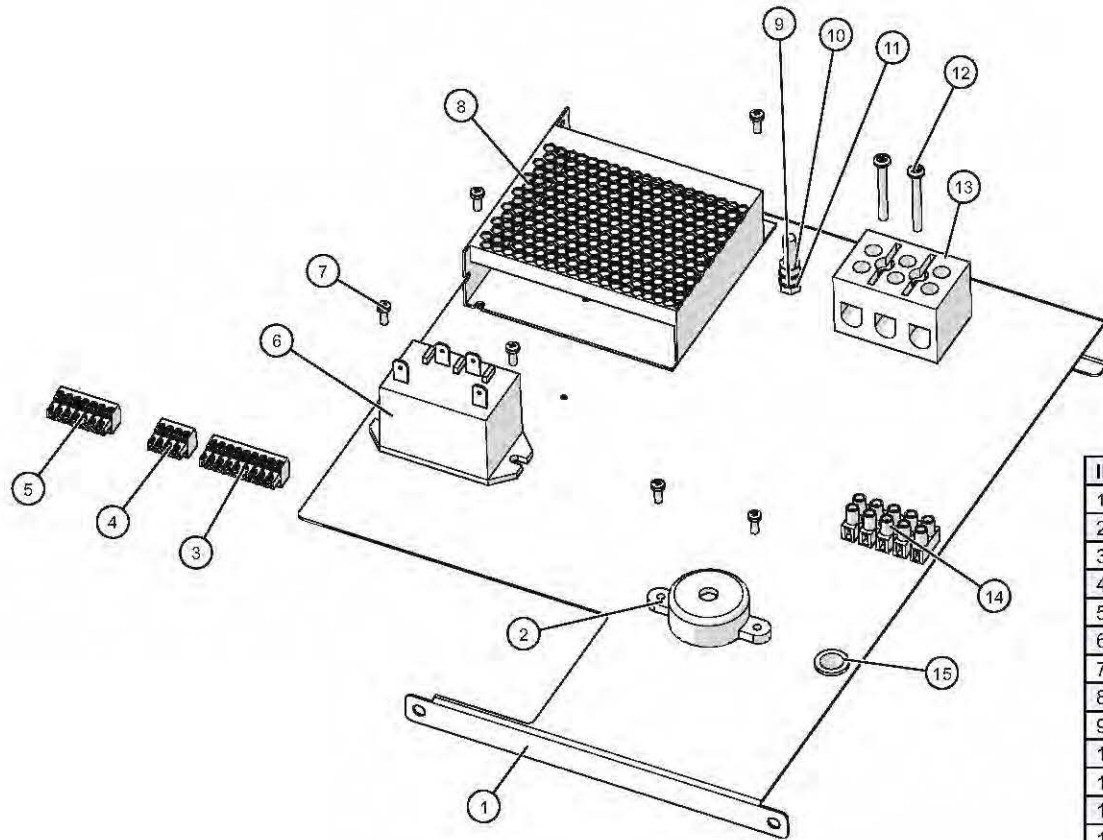
ID	Part No.	Description	Qty
1	SP-29392	SPACER, SNAP-IN, 7/16"	6
2	CC-34970	ELAN WARMER CONTROL	1
3	WS-2467	WASHER, INT. LOCK	1
4	SC-38128	SCREW,PAN PH, METRIC, M5	1
5	NU-36234	NUT, M5, KEPS	3
6	BK-3019	T-BLOCK	1
7	SC-47136	SCREW,6-32X1-1/2" PAN	2

500-S Electrical Chassis, 120V Deluxe



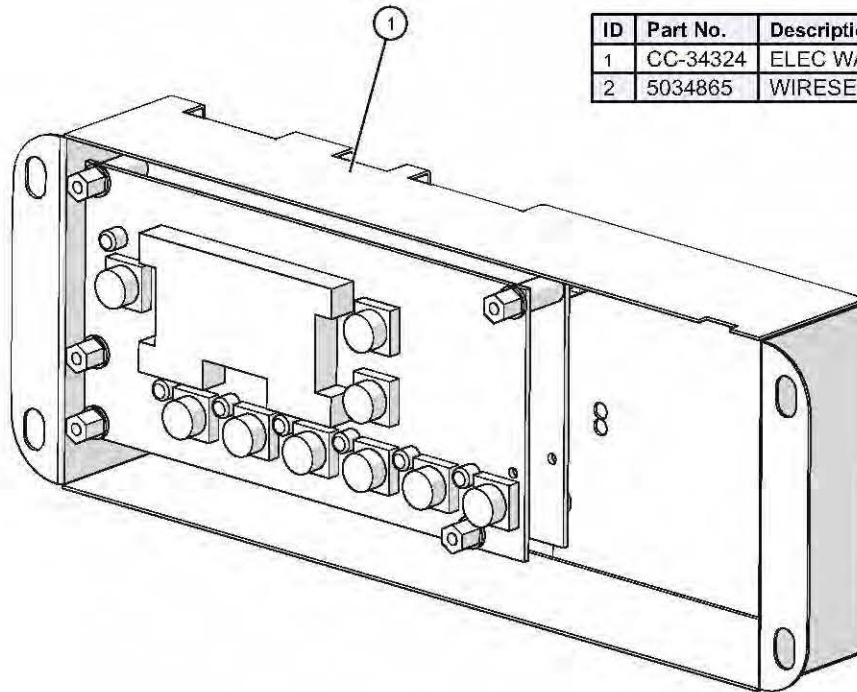
ID	Part No.	Description	Qty
1	RL-33558	RELAY, SPST 30A @ 277 VAC 12VDC	1
2	BA-38586	BOARD, POWER SUPPLY, 12V	1
3	WS-2467	WASHER, INT. LOCK	1
4	SC-38128	SCREW,PAN PH. METRIC, M5	1
5	NU-36234	NUT, M5, KEPS	3
6	BK-3019	T-BLOCK	1
7	SC-2365	SCREW,6-32X1-1/4,NC PHILLIPS	2
8	TM-33560	TERMINAL,STRIP,5 CIRCUIT,UL,VDE	1
9	BU-3006	1/2" HOLE BUSHING	1
10	SC-22273	SCREW,M4x0.7X10MM PAN	6
11	BP-3567	BEEPER, SOLID STATE, 1.5-20V	1
12	CR-33718	CONNECTOR 9 PIN	1
13	CR-33763	CONNECTOR 4 PIN	1
14	CR-33761	CONNECTOR, 7 PIN	1
15	1011531	WARMER SERIES ELEC CHASSIS	1

500-S Electrical Chassis, 230V Deluxe



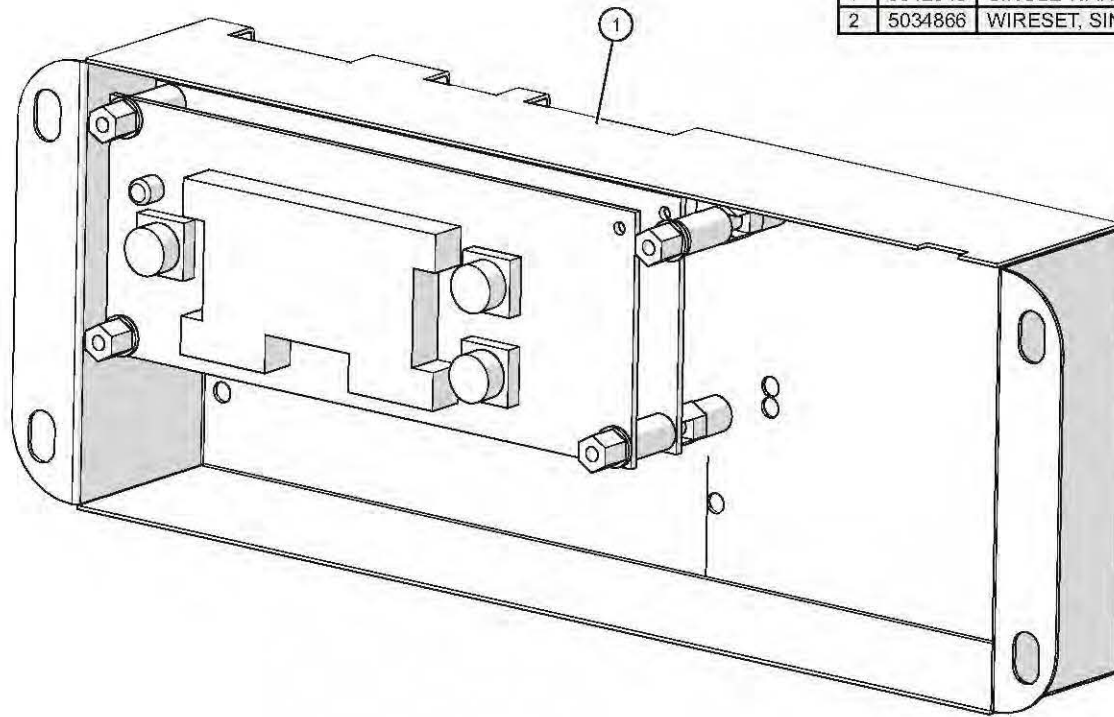
ID	Part No.	Description	Qty
1	1011531	WARMER SERIES ELEC CHASSIS	1
2	BP-3567	BEEPER, SOLID STATE, 1.5-20V	1
3	CR-33718	CONNECTOR 9 PIN	1
4	CR-33763	CONNECTOR 4 PIN	1
5	CR-33761	CONNECTOR, 7 PIN	1
6	RL-33558	RELAY, SPST 30A @ 277 VAC 12VDC	1
7	SC-22268	SCREW, M3x0.5X8MM PAN	6
8	BA-38586	BOARD, POWER SUPPLY, 12V	1
9	SC-38128	SCREW, PAN PH, METRIC, M5	1
10	NU-36234	NUT, M5, KEPS	3
11	WS-2467	WASHER, INT. LOCK	1
12	SC-2365	SCREW, 6-32X1-1/4, NC PHILLIPS	2
13	BK-3019	T-BLOCK	1
14	TM-33560	TERMINAL, STRIP, 5CIRCUIT, UL, VDE	1
15	BU-3006	1/2" HOLE BUSHING	1

Control Assembly, Deluxe w/Timer



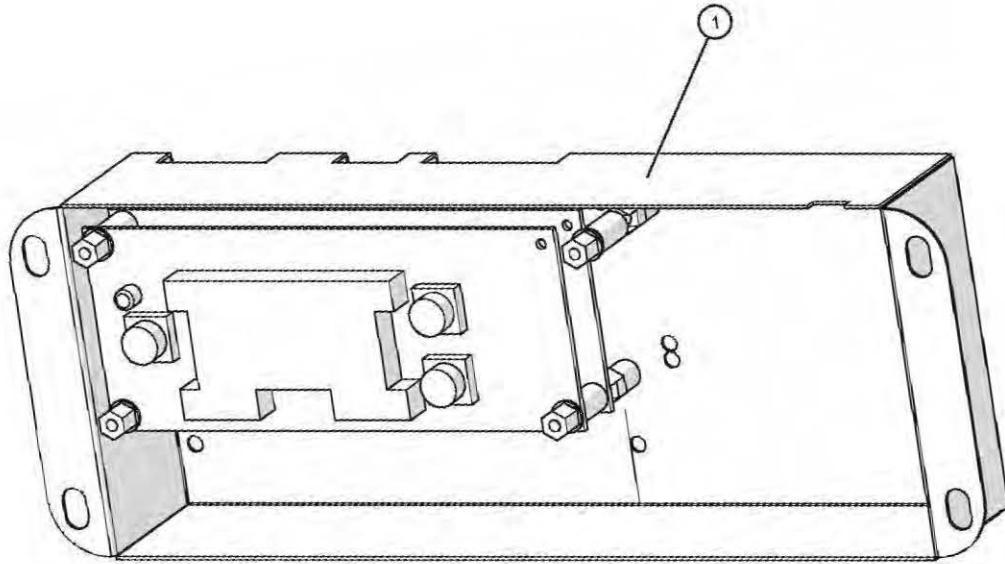
ID	Part No.	Description	Qty
1	CC-34324	ELEC WARMER CONTROL W/ TIMER	1
2	5034865	WIRESET, SINGLE CAVITY WARMER (not shown)	1

Control Assembly, Deluxe w/Probe



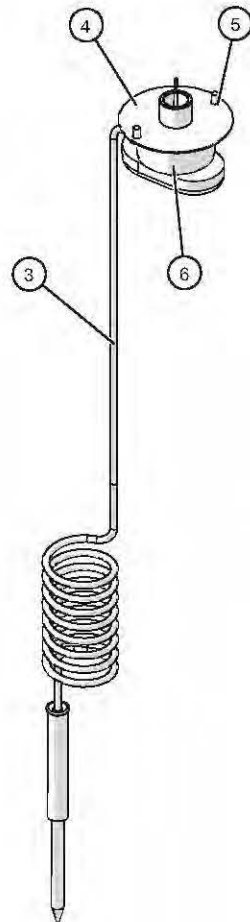
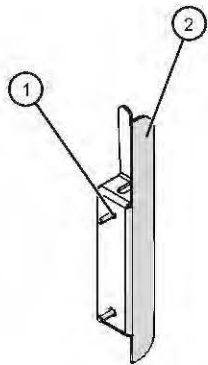
ID	Part No.	Description	Qty
1	5012946	SINGLE WARMER CONTROL	1
2	5034866	WIRESET, SINGLE CAVITY WARMER (not shown)	1

Control Assembly, Deluxe



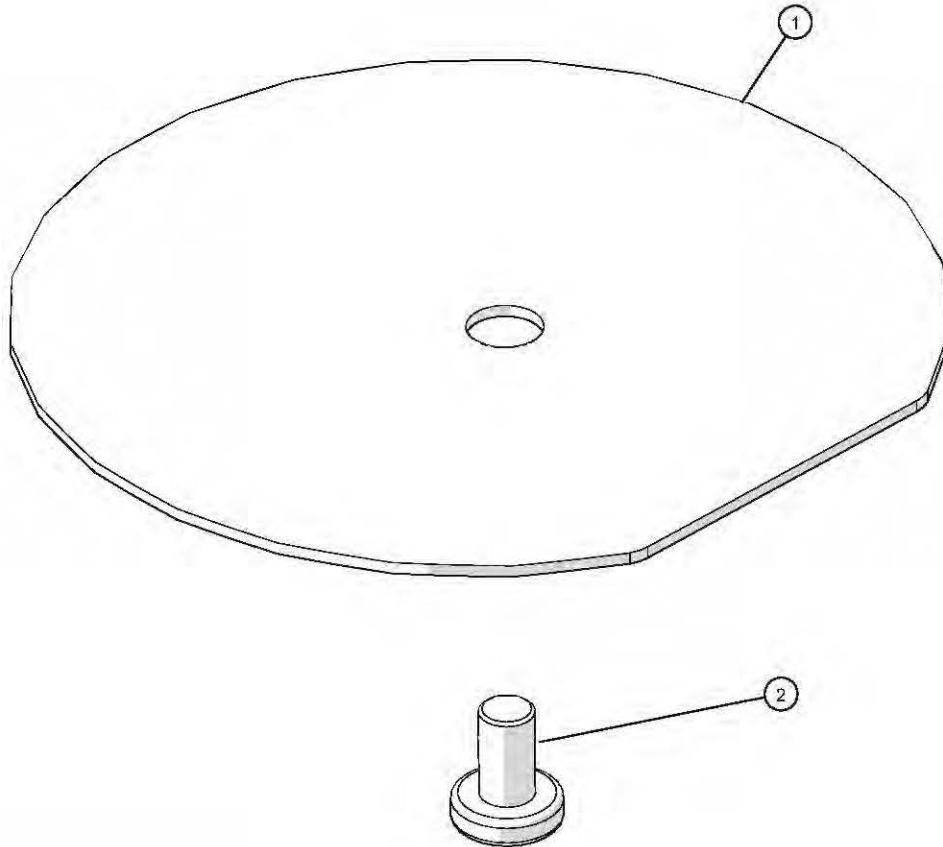
ID	Part No.	Description	Qty
1	5034718	CONTROL, WARMER ASSY, DX	1

Probe Assembly, Deluxe



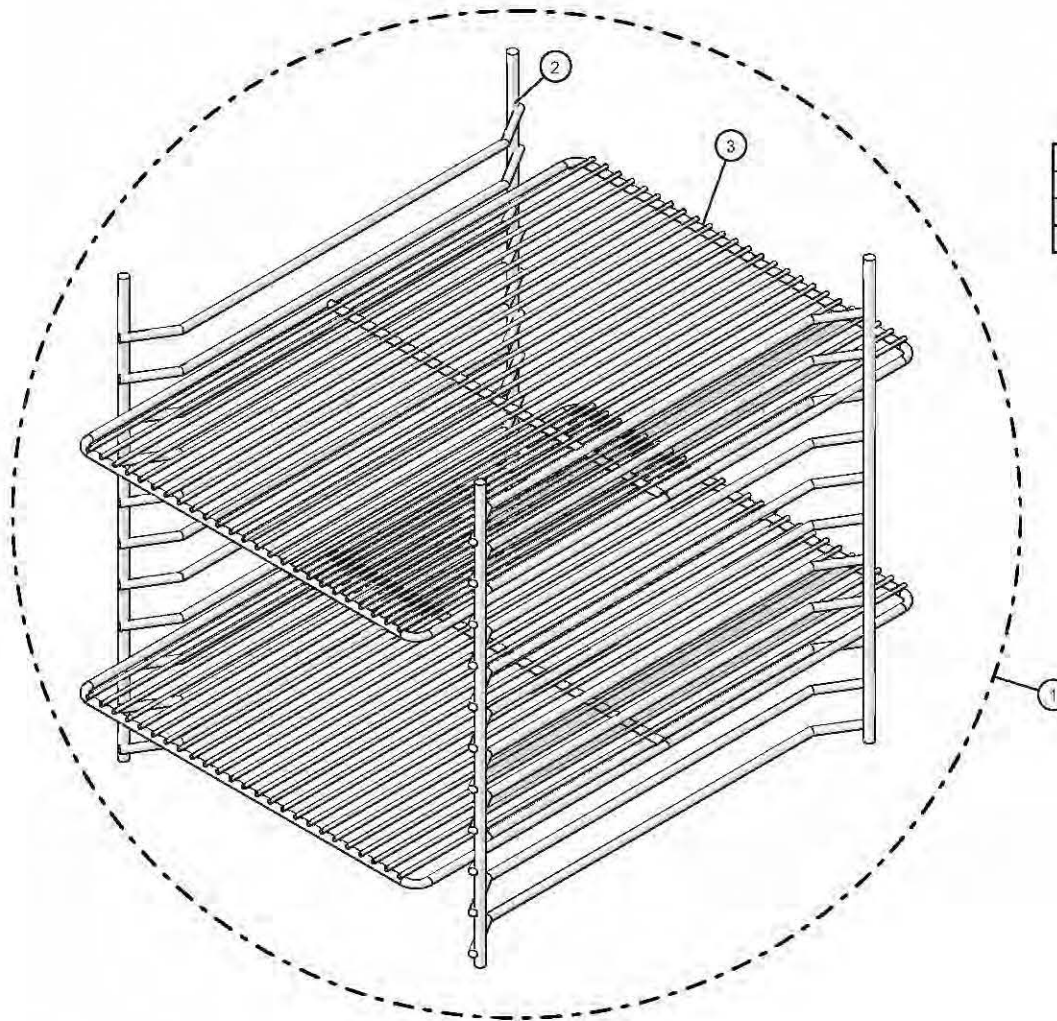
ID	Part No.	Description	Qty
1	RI-27108	RIVET, SEALED	2
2	13239	PROBE HOLDER, TH	1
3	PR-36065	PROBE, QUICK CONNECT, PT100	1
4	5009712	PROBE COVER WELDMENT	1
5	SC-22271	M4 X 6MM PH PAN HD M/S .7	2
6	PR-34705	PROBE, RECEPTACLE, 600MM WIRE	1

Seal, No Probe



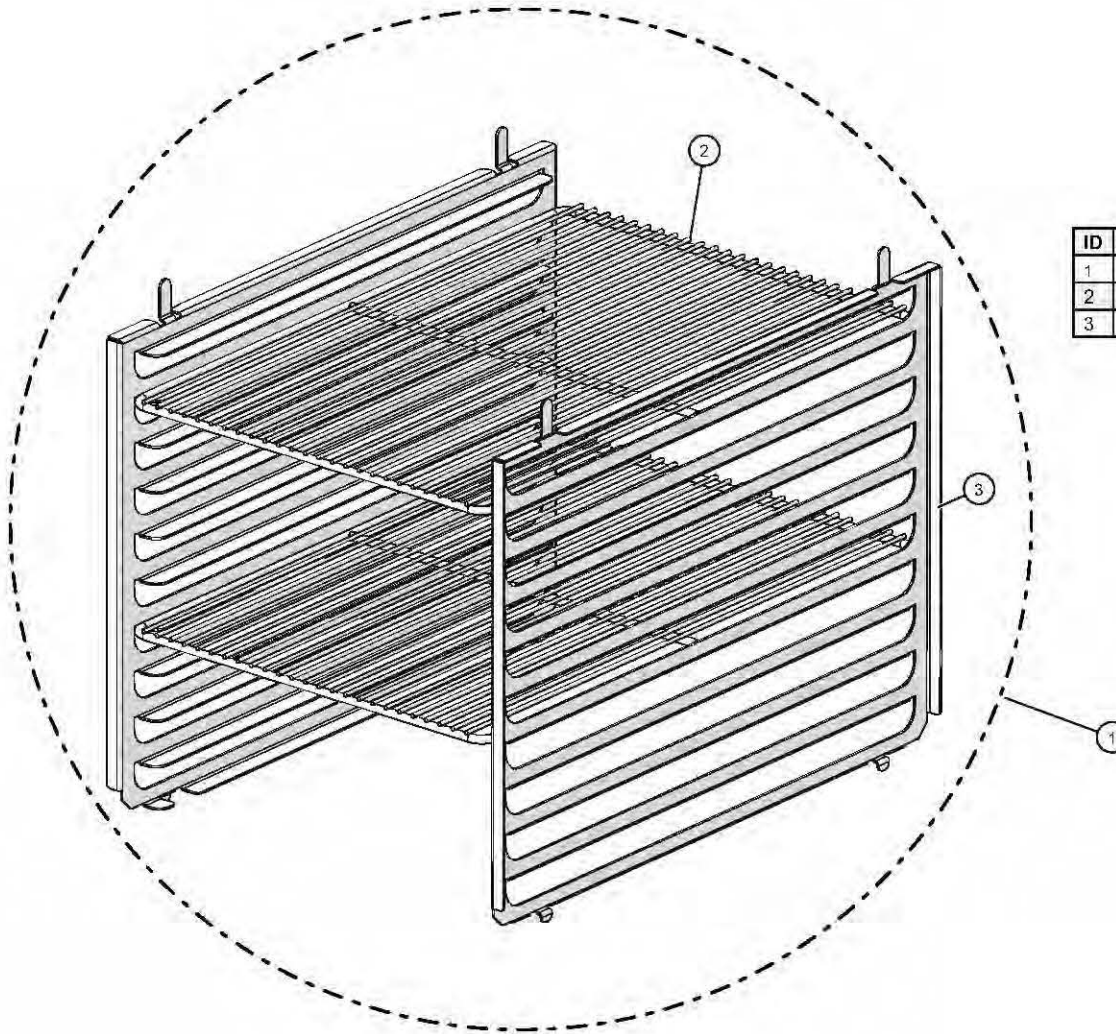
ID	Part No.	Description	Qty
1	1006871	NON-PRODUCT PROBE SEAL	1
2	SC-22271	SCREW, M4 X 6MM PH PAN HD M/S .7	1

500-S Side Rack and Shelves (Domestic)



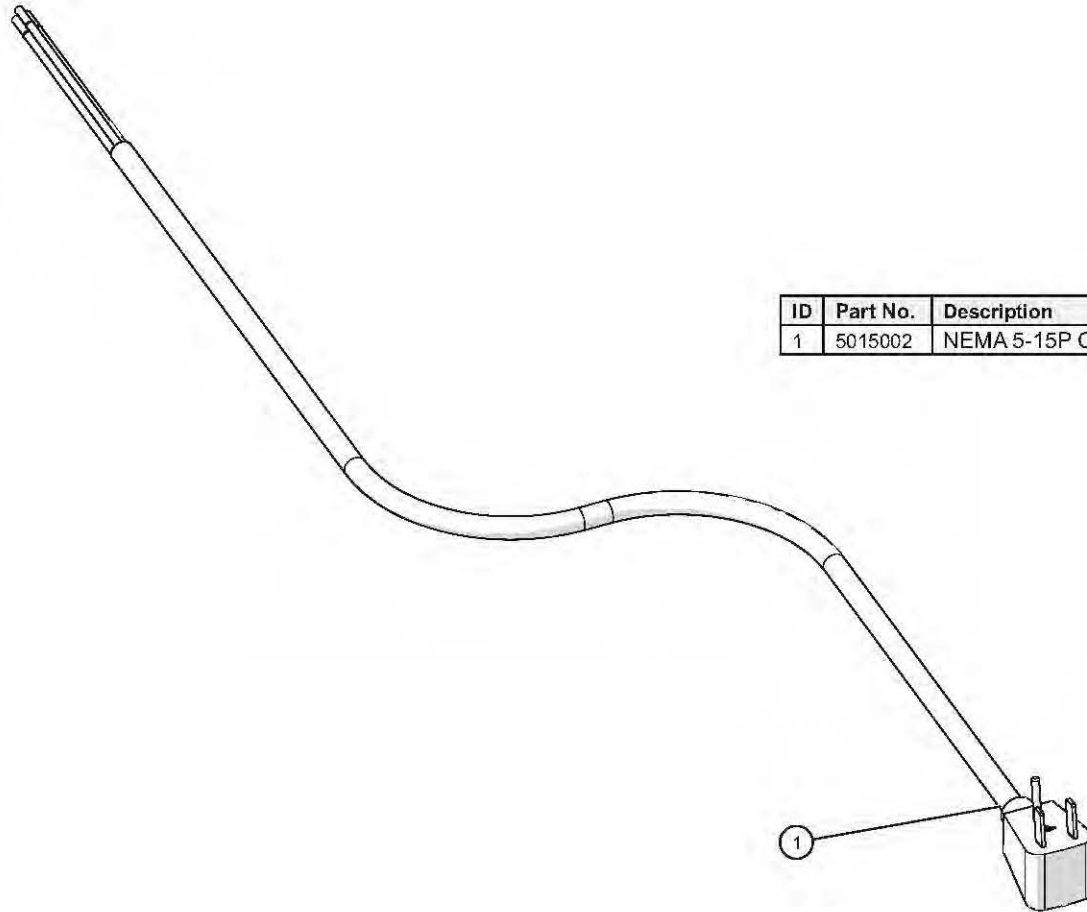
ID	Part No.	Description	Qty
1	5035913	SHELVES,RACK AND,SIDE	1
3	SH-2107	WIRE SHELF AND PAN GRID	2
2	SR-28402	NICKEL SIDE RACK	2

500-S Side Rack and Shelves (International)



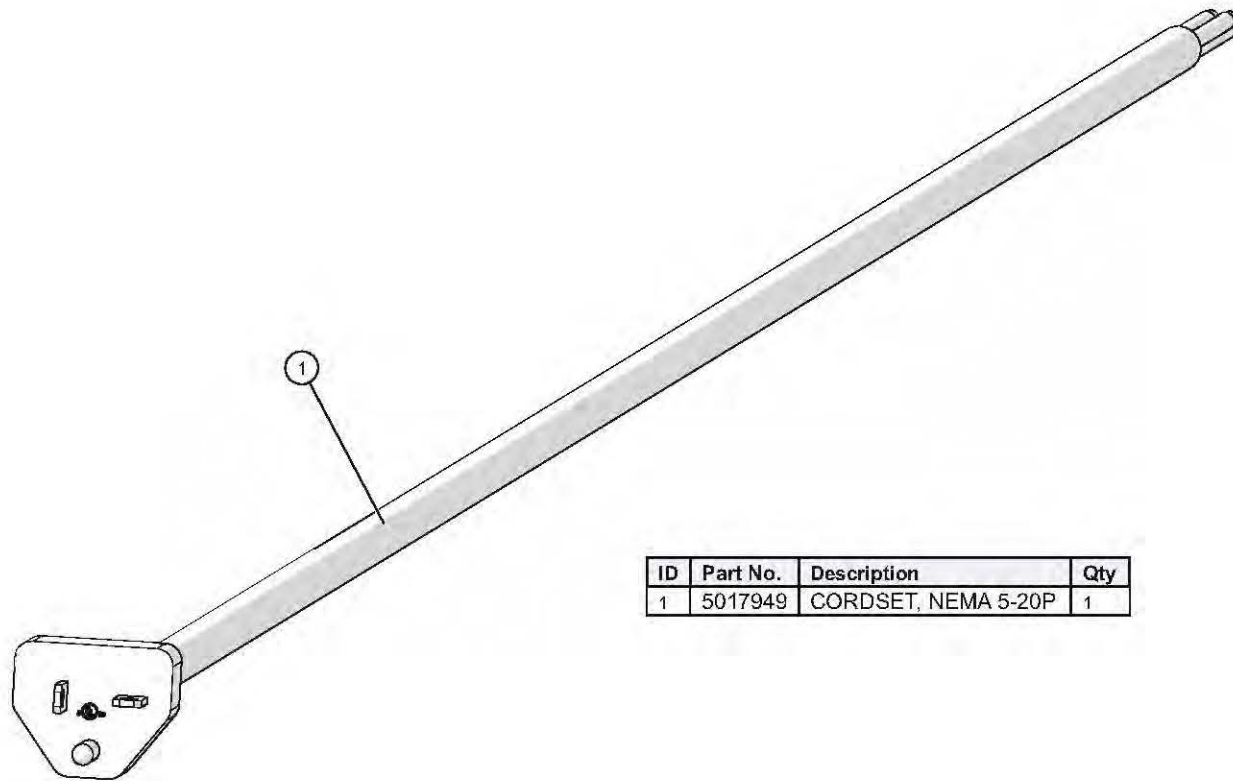
ID	Part No.	Description	Qty
1	5035914	SHELVES,RACK AND,SIDE	1
2	SH-2107	WIRE SHELF AND PAN GRID	2
3	1010880	500 SERIES INT. PAN SLIDE	2

Cordset/Ferrule Assembly, NEMA 5-15P



ID	Part No.	Description
1	5015002	NEMA 5-15P CORDSET FERRULE ASSEMBLY

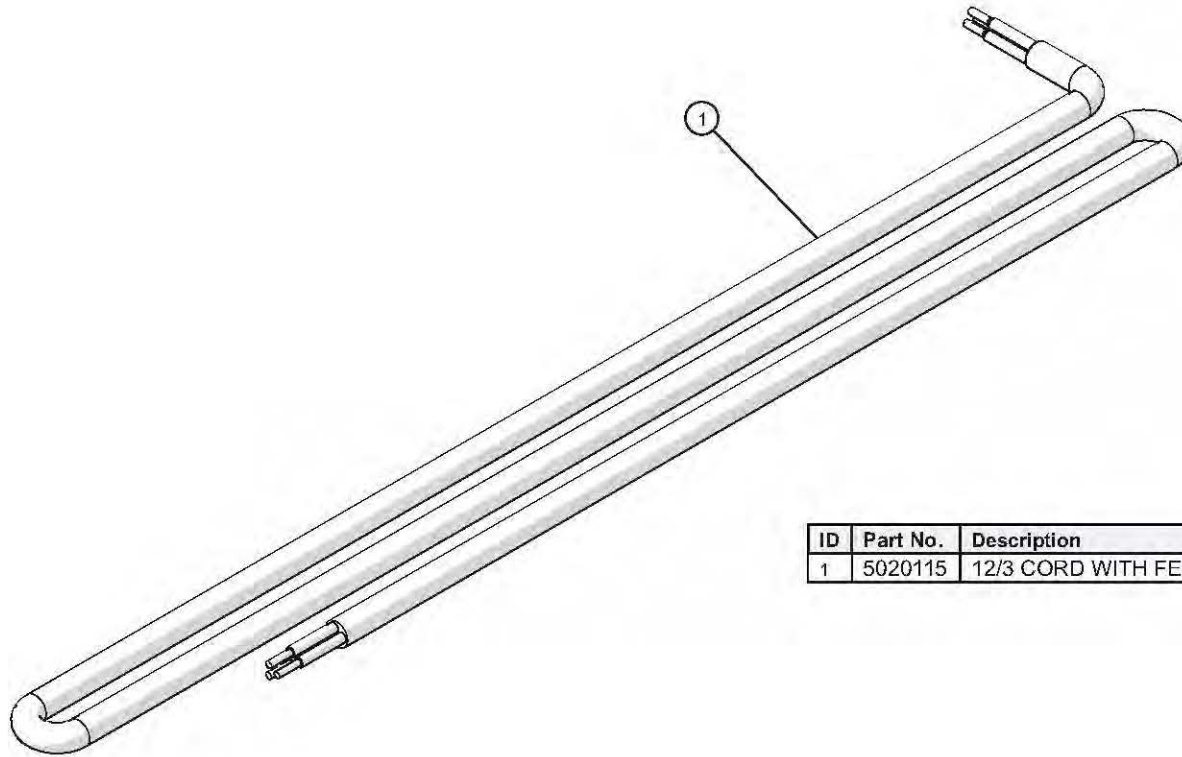
Cordset/Ferrule Assembly, NEMA 5-20P



ID	Part No.	Description	Qty
1	5017949	CORDSET, NEMA 5-20P	1

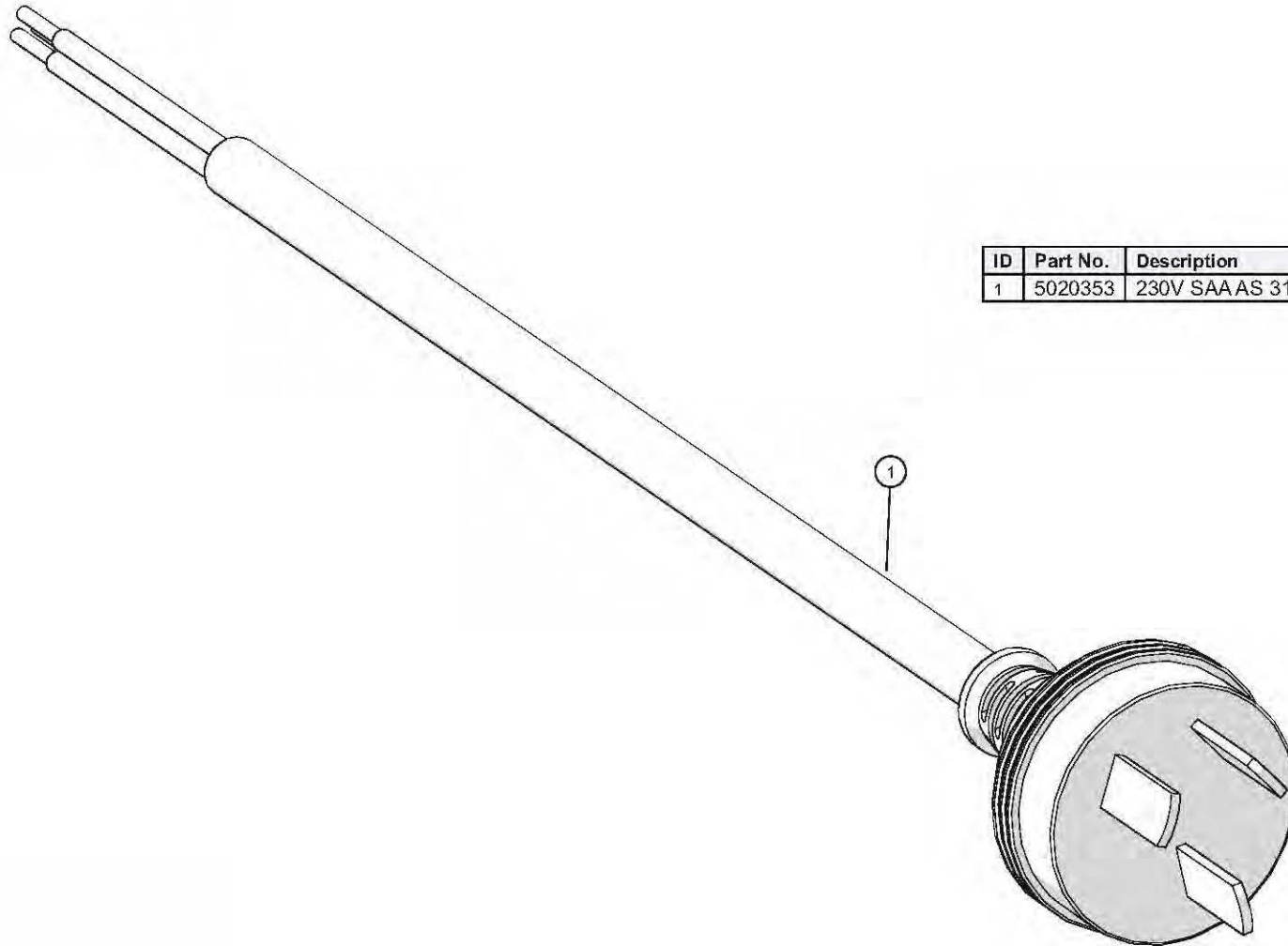
CORD, 12/3 WITH FERRULES, 12'

Cord, 12/3 with Ferrules, 12'



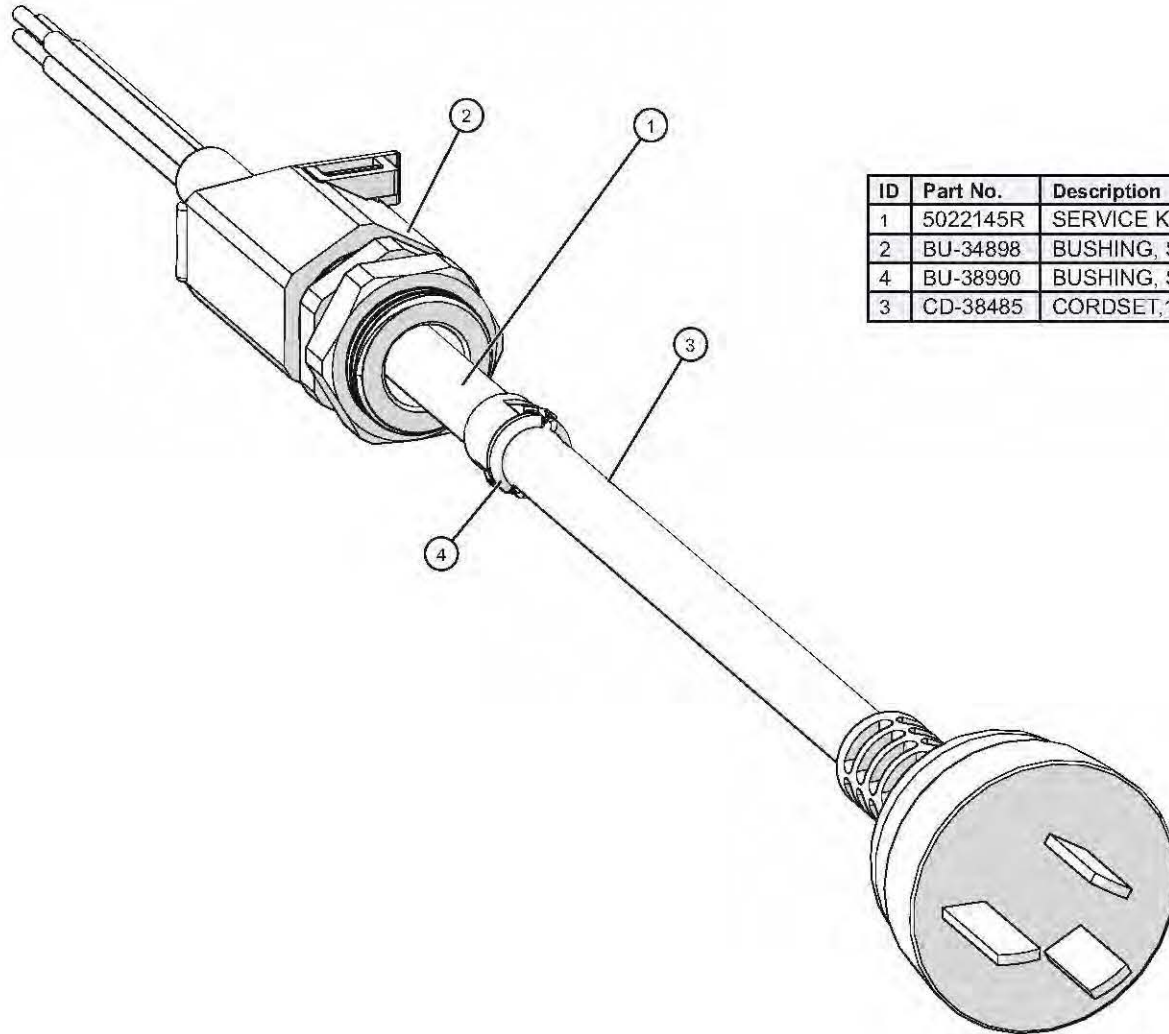
ID	Part No.	Description	Qty
1	5020115	12/3 CORD WITH FERRULES, 12'	1

Cordset/Ferrule Assembly, SAA AS 3112-16P



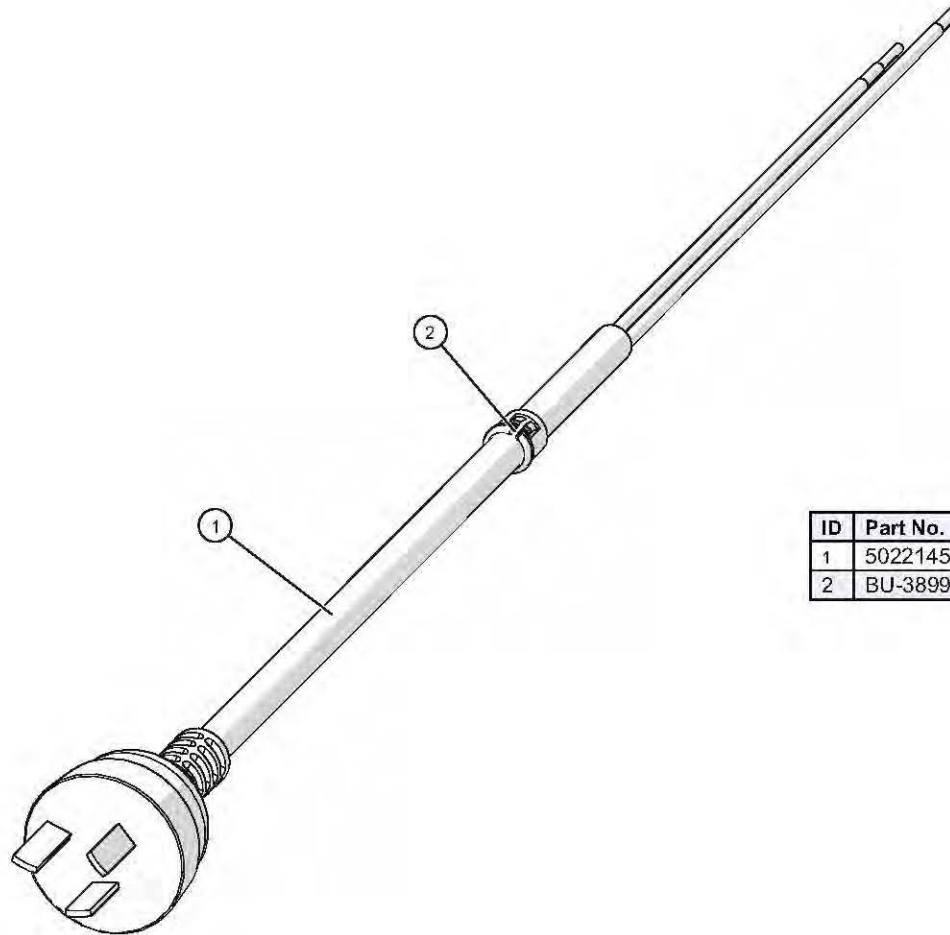
ID	Part No.	Description	Qty
1	5020353	230V SAA AS 3112-16P CORDSET	1

Cordset Assembly, AS/NZS 3112



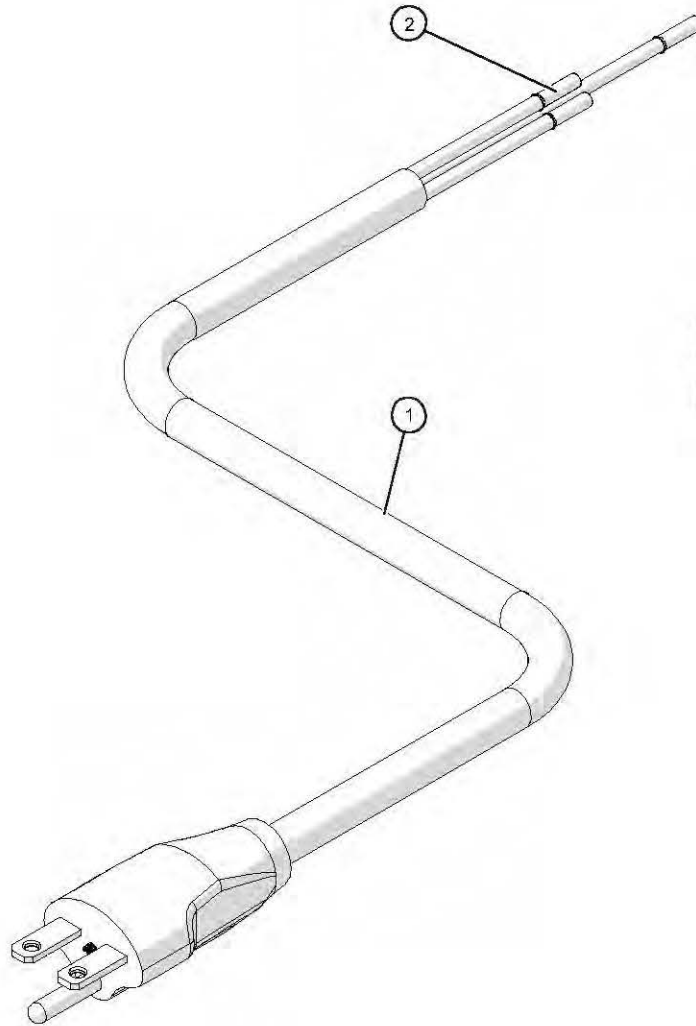
ID	Part No.	Description	Qty
1	5022145R	SERVICE KIT, CORDSET,10A-250V	1
2	BU-34898	BUSHING, STRAIN RELIEF, 90°, BLK	1
4	BU-38990	BUSHING, SNUB, 3/16" CABLE	1
3	CD-38485	CORDSET,10A-250V	1

Cordset Assembly, AS/NZS 3112 2000



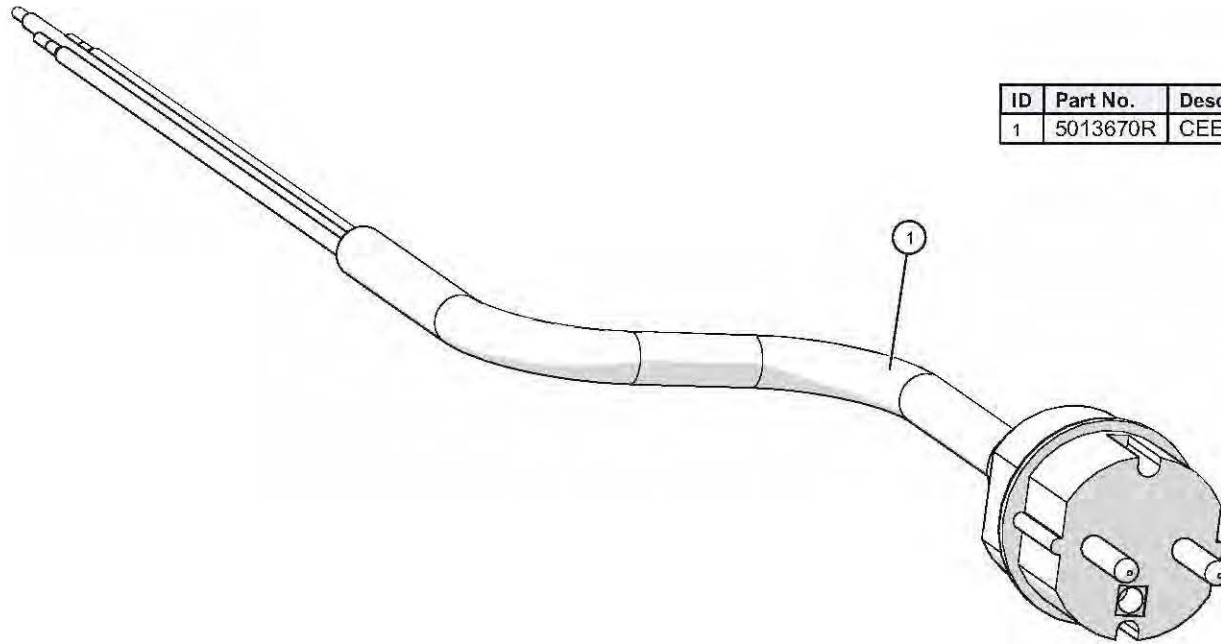
ID	Part No.	Description	Qty
1	5022145	CORDSET,10A-250V,AS/NZS 3112:2000	1
2	BU-38990	BUSHING, SNUB, 3/16" CABLE	1

Cordset/Ferrule Assembly, NEMA 6-15P



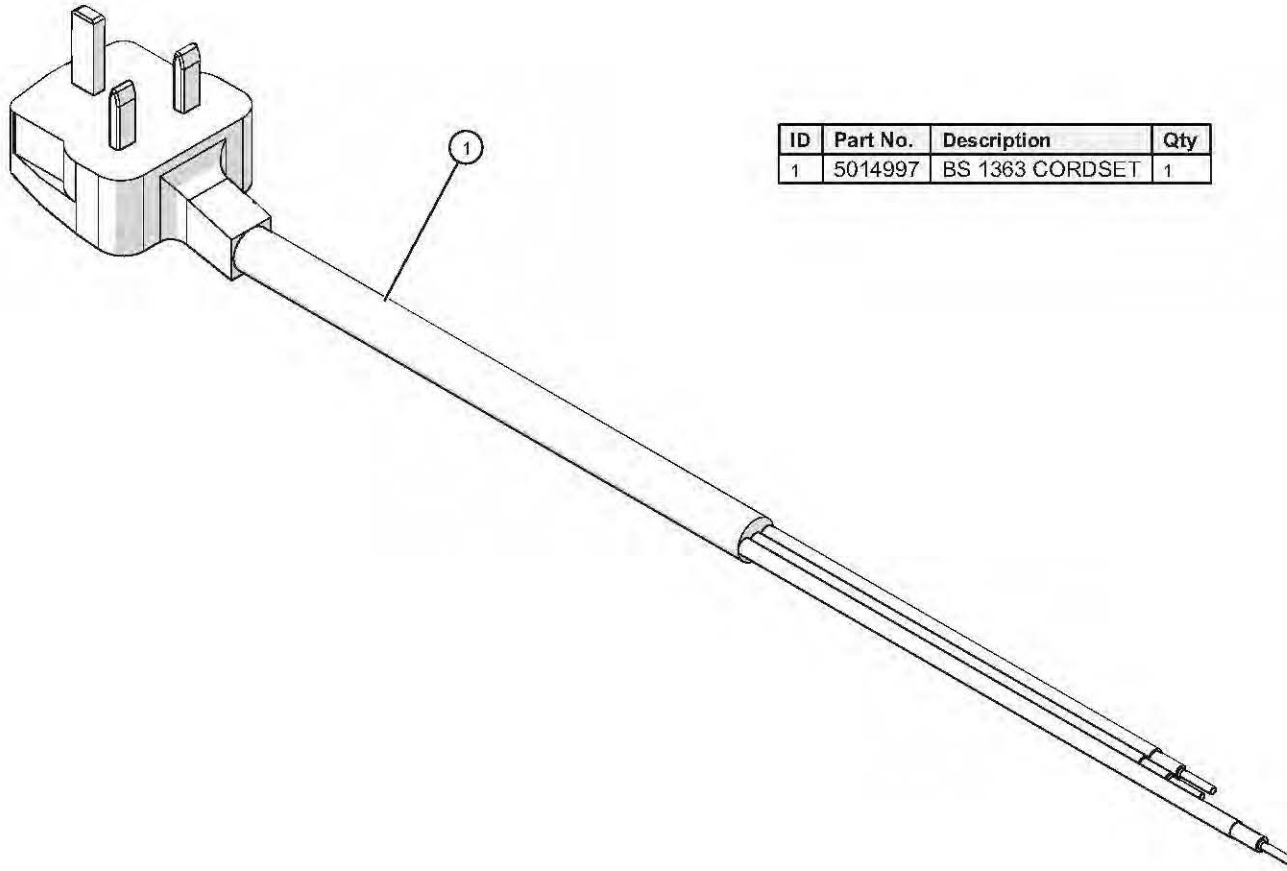
ID	Part No.	Description
1	CD-3551	CORDSET, 14/3 SJTO, 250V
2	CR-34829	CONNECTOR, #14 FERRULE

Cordset/Ferrule Assembly, CEE-7/7

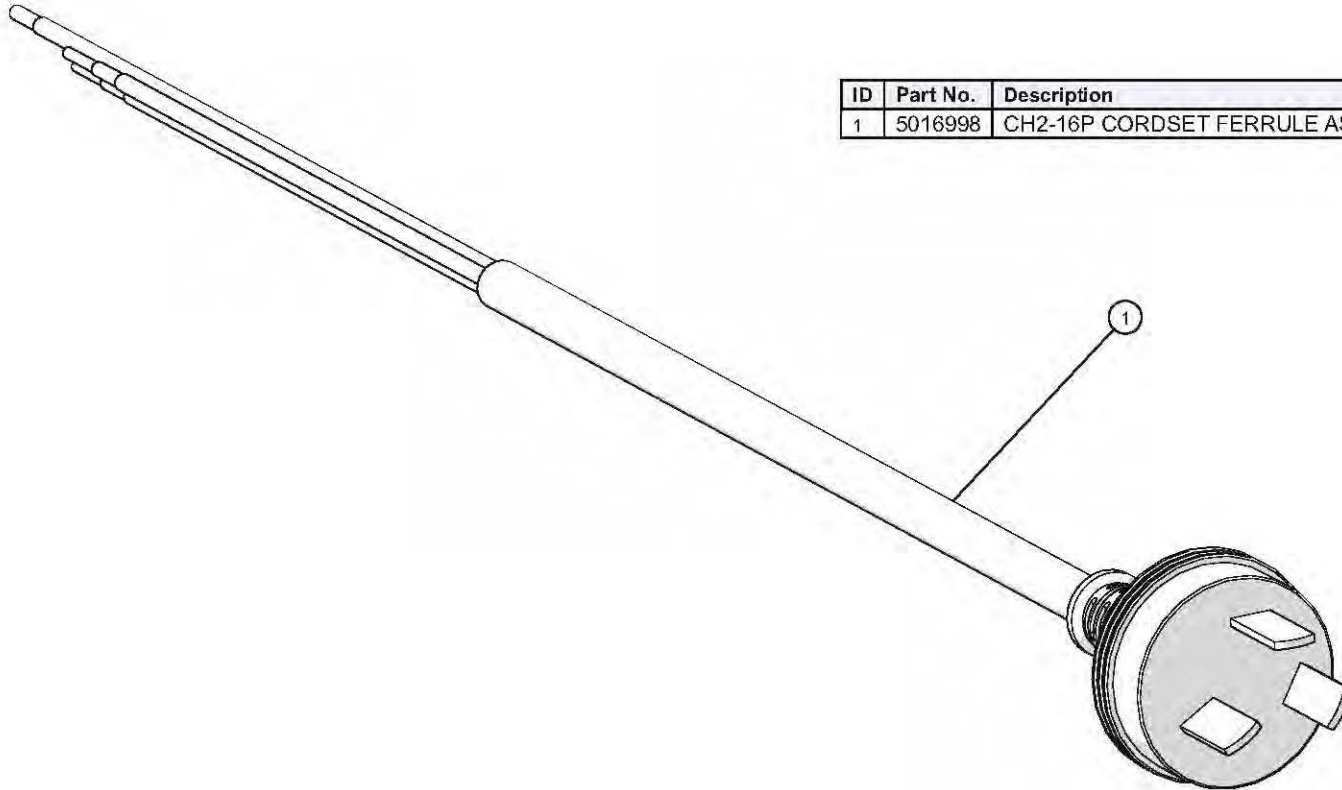


ID	Part No.	Description	Qty
1	5013670R	CEE 7/7 CORDSET FERRULE ASSEMB	1

Cordset/Ferrule Assembly, BS 1363

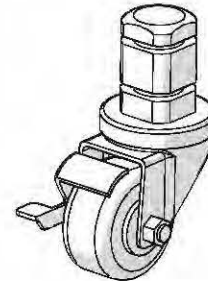
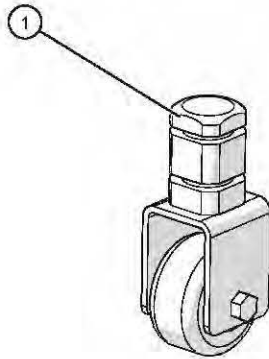
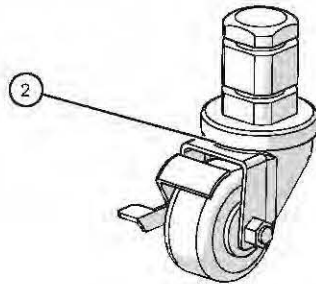


Cordset/Ferrule Assembly, CH2-16P



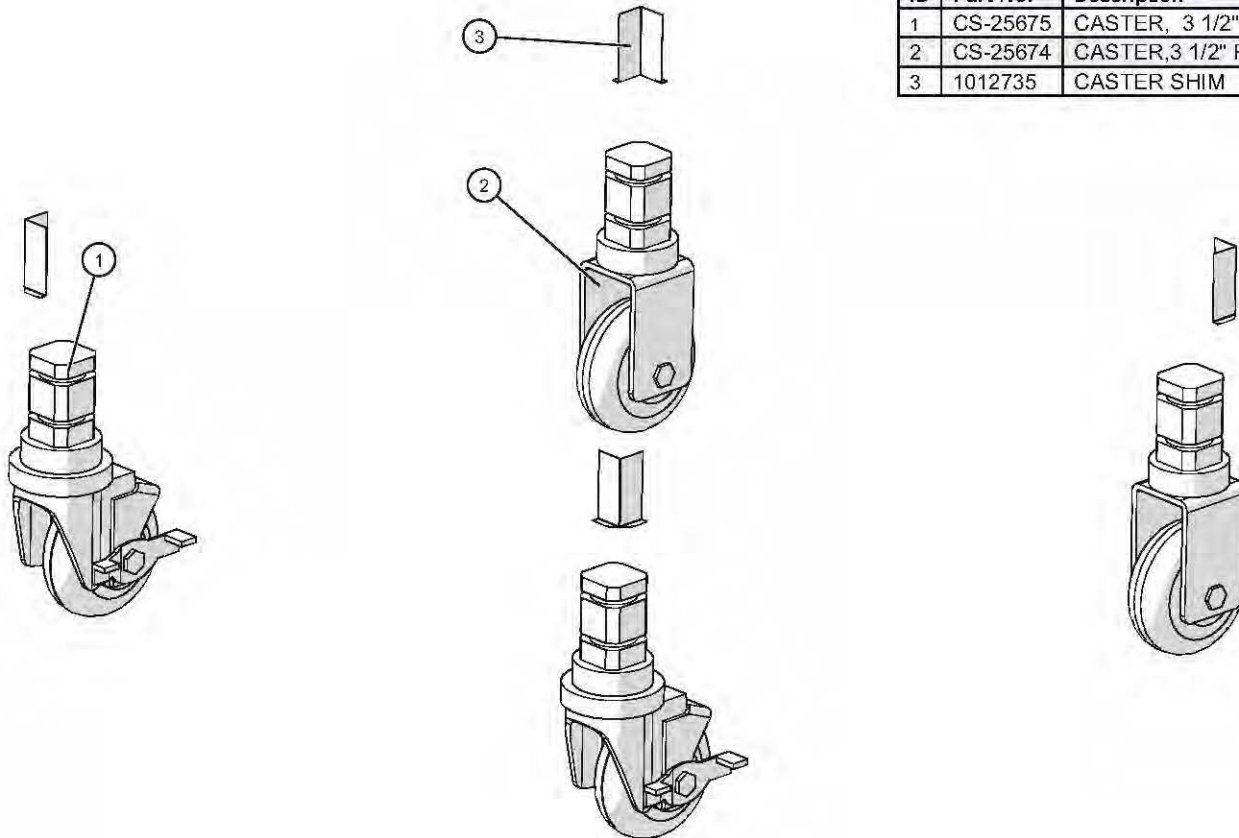
ID	Part No.	Description	Qty
1	5016998	CH2-16P CORDSET FERRULE ASSEMBLY	1

Caster Package, 2-1/2"



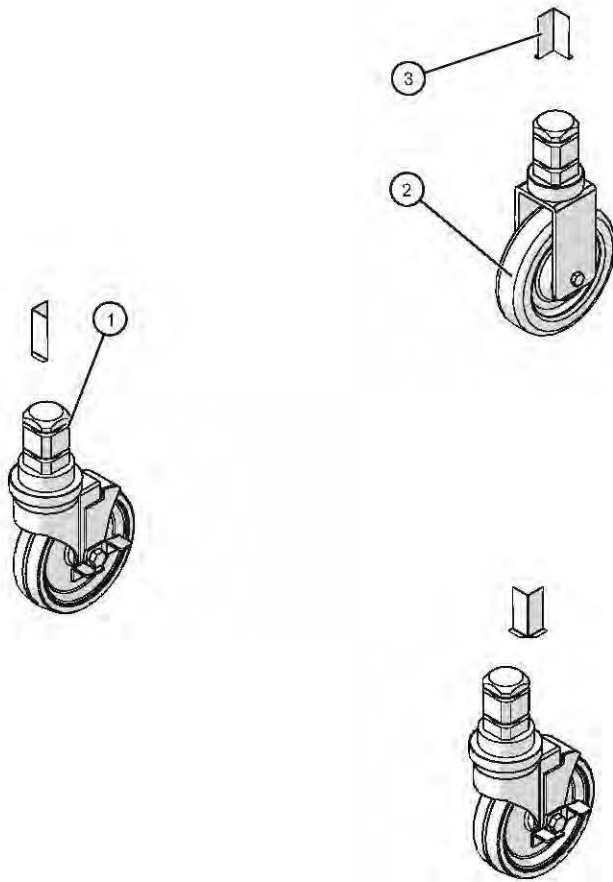
ID	Part No.	Description	Qty
1	CS-38265	CASTER, RIGID 2.5", 1.5" STEM	2
2	CS-38264	CASTER, SWIVEL 2.5", 1.5" STEM	2

Caster Package, 3-1/2"

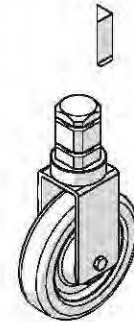


ID	Part No.	Description	Qty
1	CS-25675	CASTER, 3 1/2" SWIVEL W/ BRAKE	2
2	CS-25674	CASTER,3 1/2" RIGID	2
3	1012735	CASTER SHIM	4

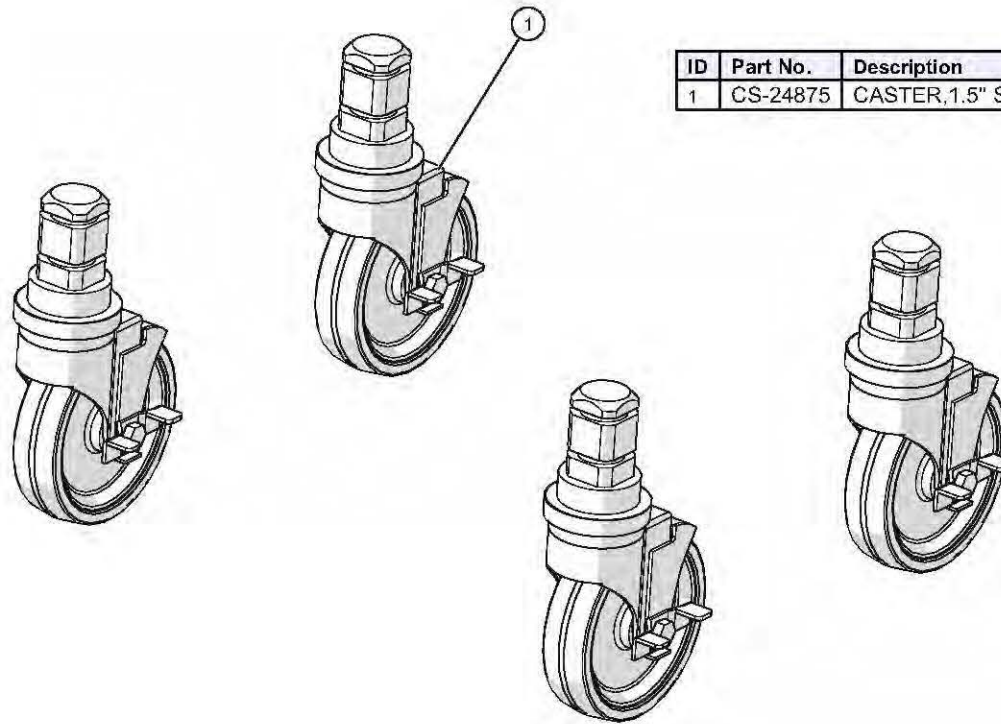
Caster Package, 5"



ID	Part No.	Description	Qty
1	CS-24875	CASTER, 1.5" STEM, 5" SWIV WHL	2
2	CS-24874	CASTER, 5" RIGID, 1.5" STEM	2
3	1012735	CASTER SHIM	4

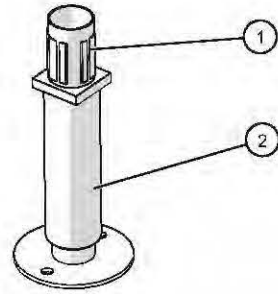


Caster Package, 5" (all swivel)

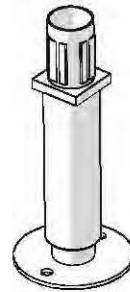
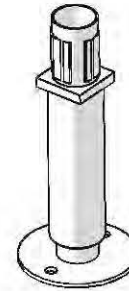
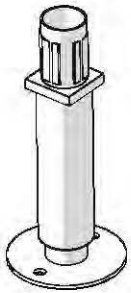


ID	Part No.	Description
1	CS-24875	CASTER, 1.5" STEM, 5" SWIV WHL

Leg Package, 6"



ID	Part No.	Description	Qty
2	LG-23067	6" LEG W/ ADJUSTABLE FLANGED FOOT	4
1	LG-37094	LEG, ADJUST, FOOTING	4





ALTO-SHAAM.

Menomonee Falls, WI U.S.A.

Phone 800-558-8744 | +1-262-251-3800 | alto-shaam.com

ASIA

Shanghai, China
Phone +86-21-6173-0336

AUSTRALIA

Brisbane, Queensland
Phone 800-558-8744

CANADA

Concord, Ontario Canada
Toll Free Phone 866-577-4484
Phone +1-905-660-6781

FRANCE

Aix en Provence, France
Phone +33[0]4-88-78-21-73

GMBH

Bochum, Germany
Phone +49 [0]234 298798-0

ITALY

Padua, Italy
Phone +39 3476073504

INDIA

Pune, India
Phone +91 9657516999

MEXICO

Phone +52 1 477-717-3108

MIDDLE EAST & AFRICA

Dubai, UAE
Phone +971-4-321-9712

CENTRAL & SOUTH AMERICA

Miami, FL USA
Phone +1 954-655-5727