

ALPINE SERVICE MANUAL

Works with Apple CarPlay

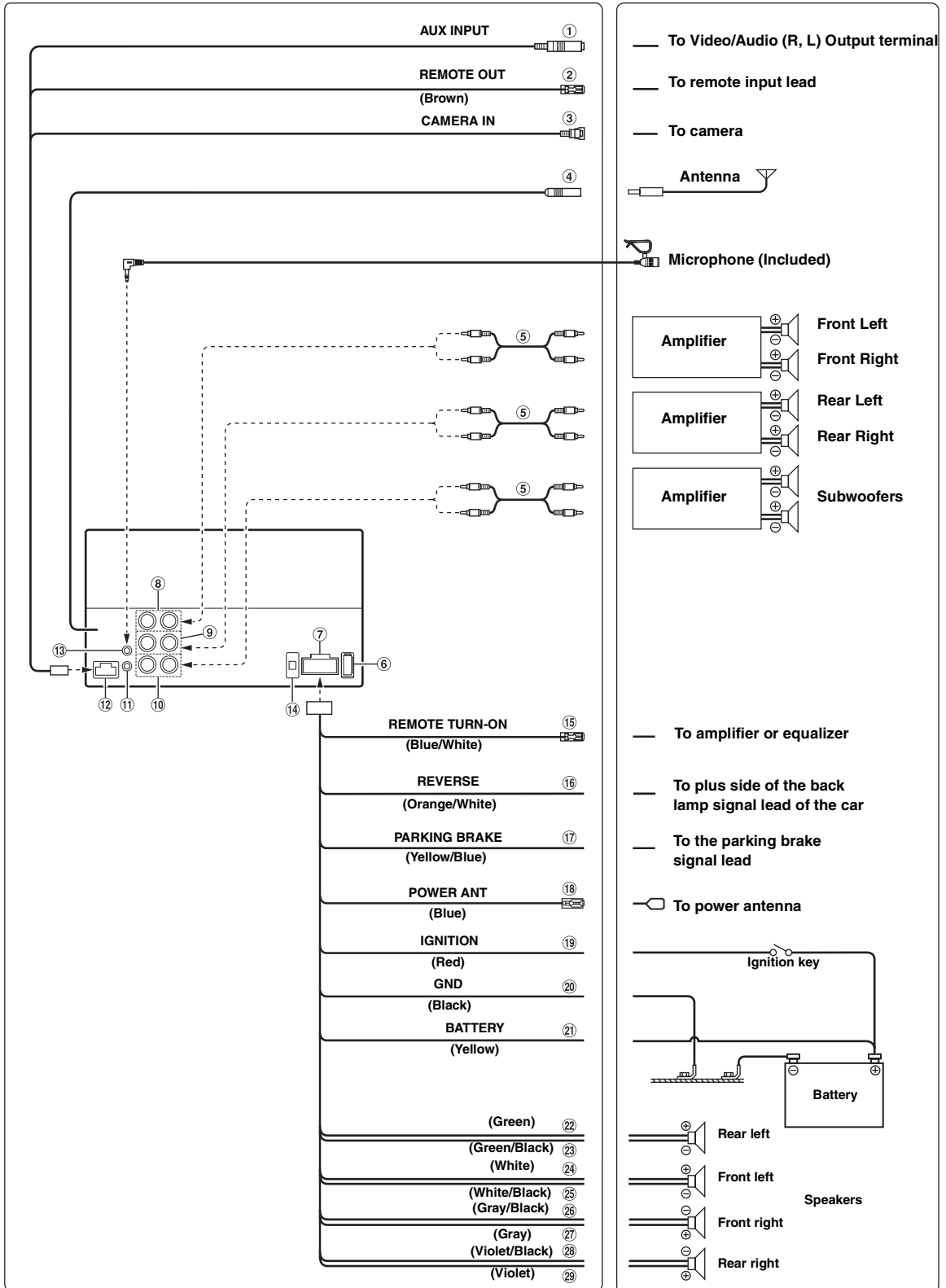


10 / 14-A
T0111400096
RWAL404A

iLX-007

System Connection

Connections



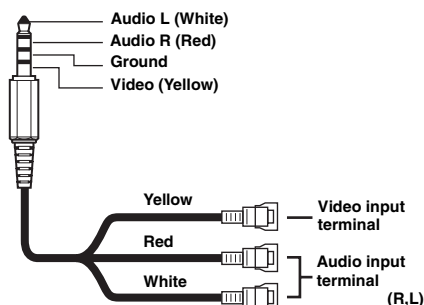
① **Video/Audio (R,L) Input Connector (AUX INPUT)**

Input the AUX Video/Audio (R,L).

- When you use this connector, an optional AV/RCA interface cable should be used.

■ **Usable AV/RCA interface cable (4-pole mini AV plug to 3-RCA)**

Wiring convention of this system is as follows:



- Configuration commercially available 4-pole mini AV plugs is not standardized.

② **Remote Control Output Lead (Brown)**

Connect this lead to the remote control input lead. This lead outputs the controlling signals from the remote control.

③ **CAMERA Input Connector**

④ **Radio Antenna Receptacle**

⑤ **RCA Extension Cable (sold separately)**

⑥ **USB Connector**

To iPhone 5 or later.

⑦ **Power Supply Connector**

⑧ **Front Output RCA Connectors**

It can be used as Front Output RCA Connectors. RED is right and WHITE is left.

⑨ **Rear Output RCA Connectors**

It can be used as Rear Output RCA Connectors. RED is right and WHITE is left.

⑩ **Subwoofer RCA Connectors**

RED is right and WHITE is left.

⑪ **Steering Remote Control Interface Connector**

To steering remote control interface box.

For details about connections, consult your nearest Alpine dealer.

⑫ **AUX/CAMERA/REMOTE OUT Connector**

⑬ **MIC Input Connector**

To Microphone (Included).

⑭ **Fuse Holder (10A)**

⑮ **Remote Turn-On Lead (Blue/White)**

Connect this lead to the remote turn-on lead of your amplifier or signal processor.

⑯ **Reverse Lead (Orange/White)**

Connect to the plus side of the car's reverse lamp. This lamp illuminates when the transmission is shifted into reverse (R).

With this lead properly wired, the video picture automatically switches to the rear camera whenever the car is put into reverse (R).

⑰ **Parking Brake Lead (Yellow/Blue)**

Connect this lead to the power supply side of the parking brake switch to transmit the parking brake status signals to the iLX-007.

⑱ **Power Antenna Lead (Blue)**

Connect this lead to the +B terminal of your power antenna, if applicable.

- This lead should be used only for controlling the vehicle's power antenna. Do not use this lead to turn on an amplifier or a signal processor, etc.

⑲ **Switched Power Lead (Ignition) (Red)**

Connect this lead to an open terminal on the vehicle's fuse box or another unused power source which provides (+) 12V only when the ignition is turned on or in the accessory position.

⑳ **Ground Lead (Black)**

Connect this lead to a good chassis ground on the vehicle. Make sure the connection is made to bare metal and is securely fastened using the sheet metal screw provided.

㉑ **Battery Lead (Yellow)**

Connect this lead to the positive (+) post of the vehicle's battery.

㉒ **Left Rear (+) Speaker Output Lead (Green)**

㉓ **Left Rear (-) Speaker Output Lead (Green/Black)**

㉔ **Left Front (+) Speaker Output Lead (White)**

㉕ **Left Front (-) Speaker Output Lead (White/Black)**

㉖ **Right Front (-) Speaker Output Lead (Gray/Black)**

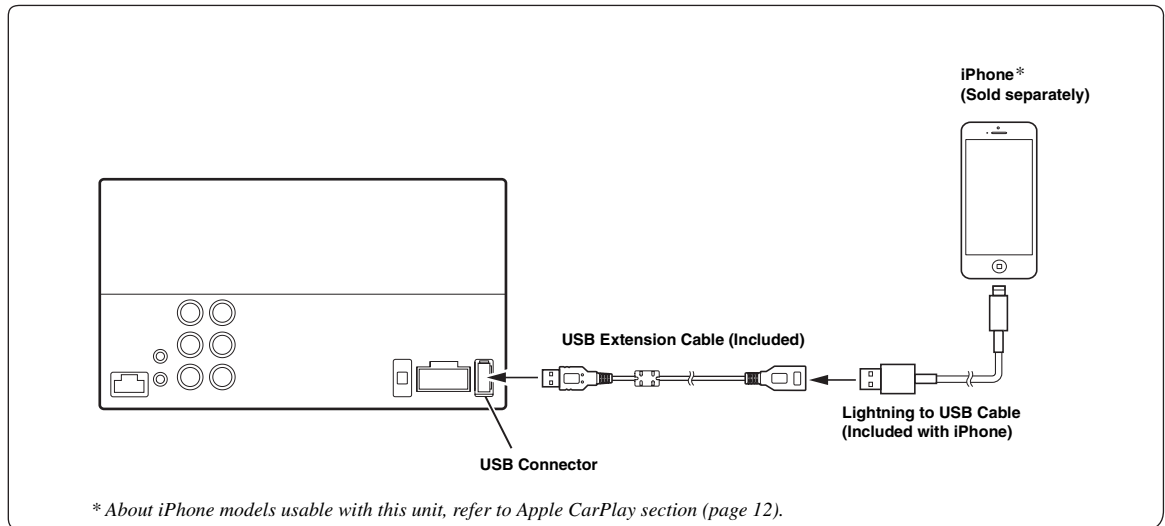
㉗ **Right Front (+) Speaker Output Lead (Gray)**

㉘ **Right Rear (-) Speaker Output Lead (Violet/Black)**

㉙ **Right Rear (+) Speaker Output Lead (Violet)**

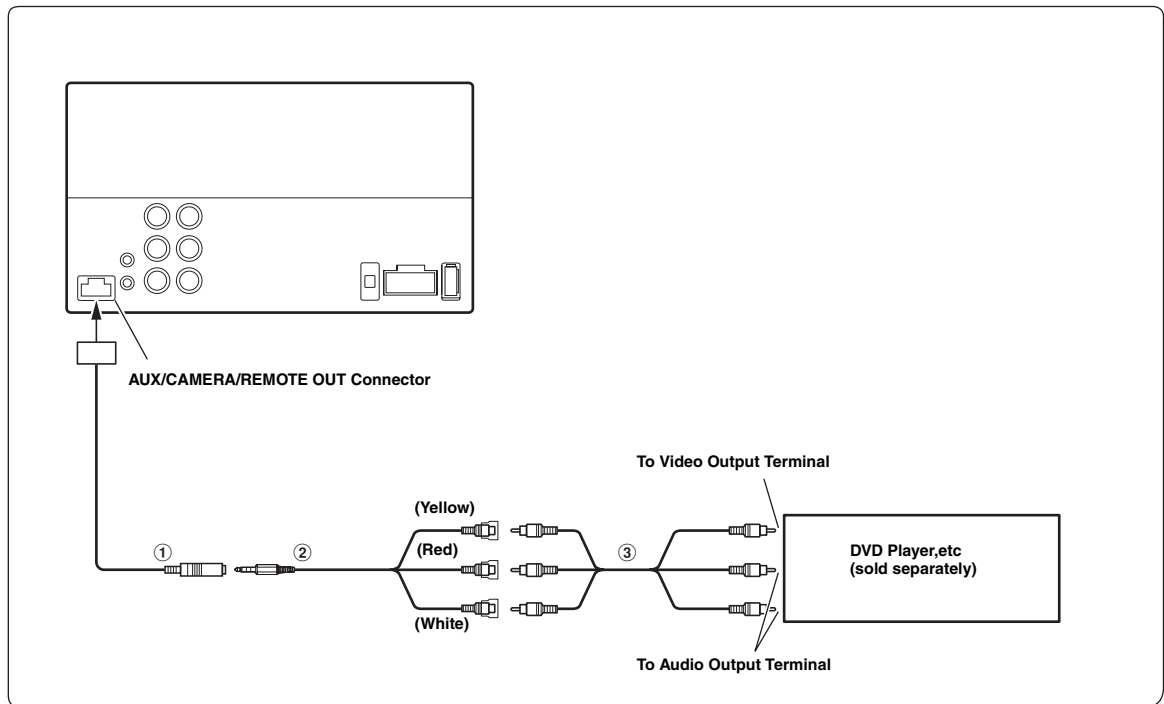
System Example

Connection of an iPhone*



- Do not leave an iPhone in a vehicle for a long time. Heat and humidity may damage the iPhone and you may not be able to play it again.

Connection of an External device



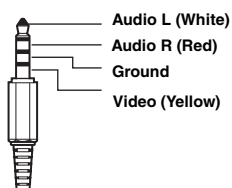
① Video/Audio Input Connector (AUX INPUT)

- When you use this connector, an optional AV/RCA interface cable should be used. For details, refer to ②.

② AV/RCA interface cable (4-pole mini AV plug to 3-RCA) (Sold Separately)

■ Usable 4-pole mini AV plug

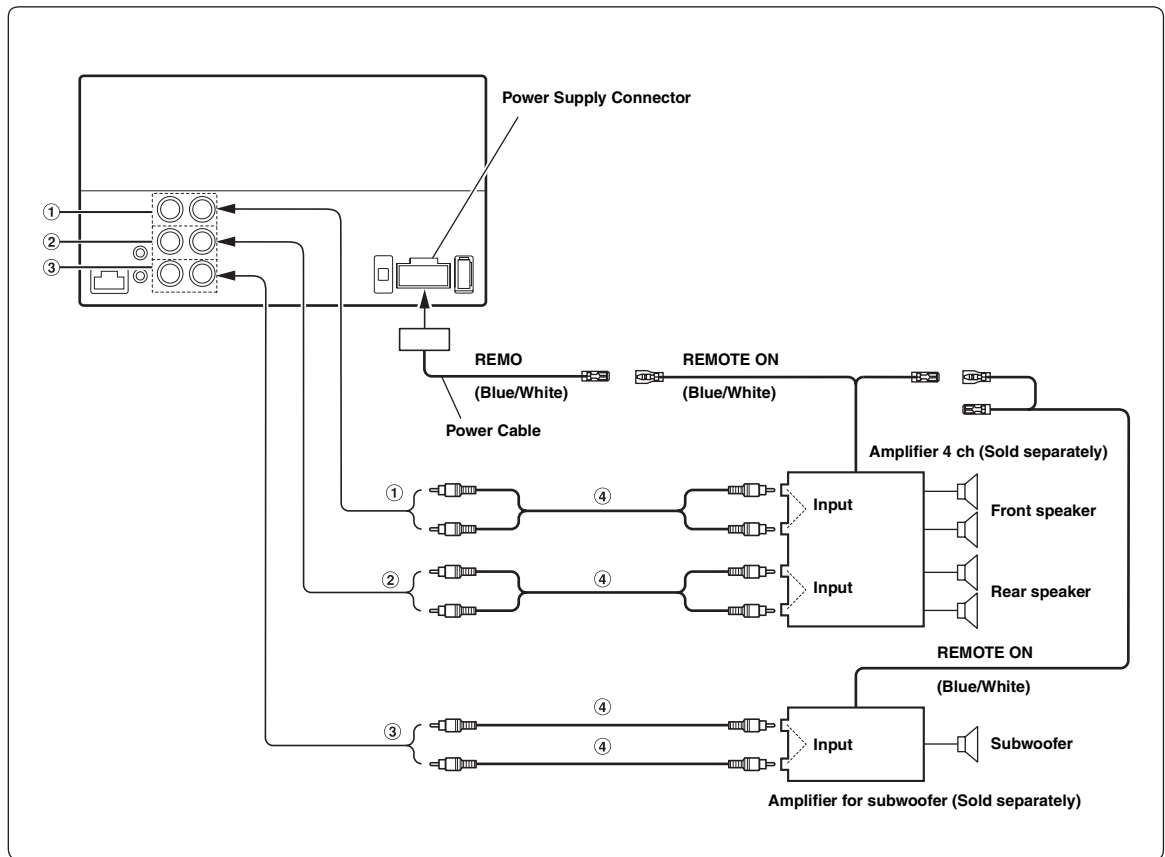
Wiring convention of this system is as follows:



- Configuration commercially available 4-pole mini AV plugs is not standardized.

③ RCA Extension Cable (Sold Separately)

Connection of an External Amplifier



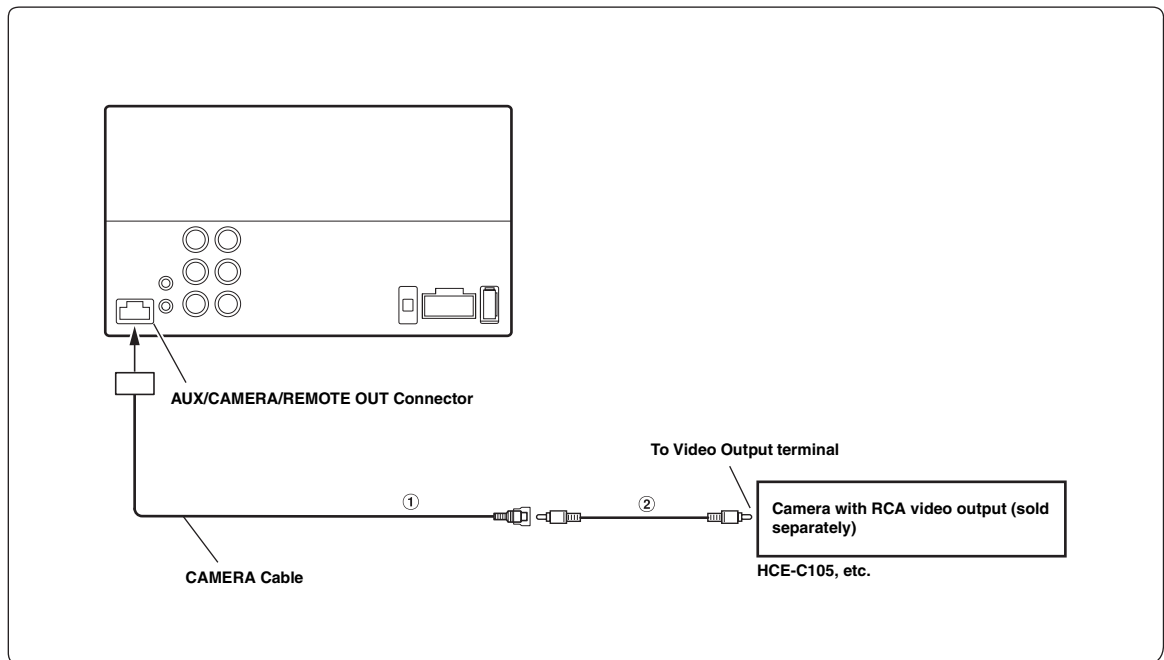
① **Front Output RCA Connectors**
RED is right and WHITE is left.

② **Rear Output RCA Connectors**
RED is right and WHITE is left.

③ **Subwoofer RCA Connector**

④ **RCA Extension Cable (Sold separately)**

Connection of camera

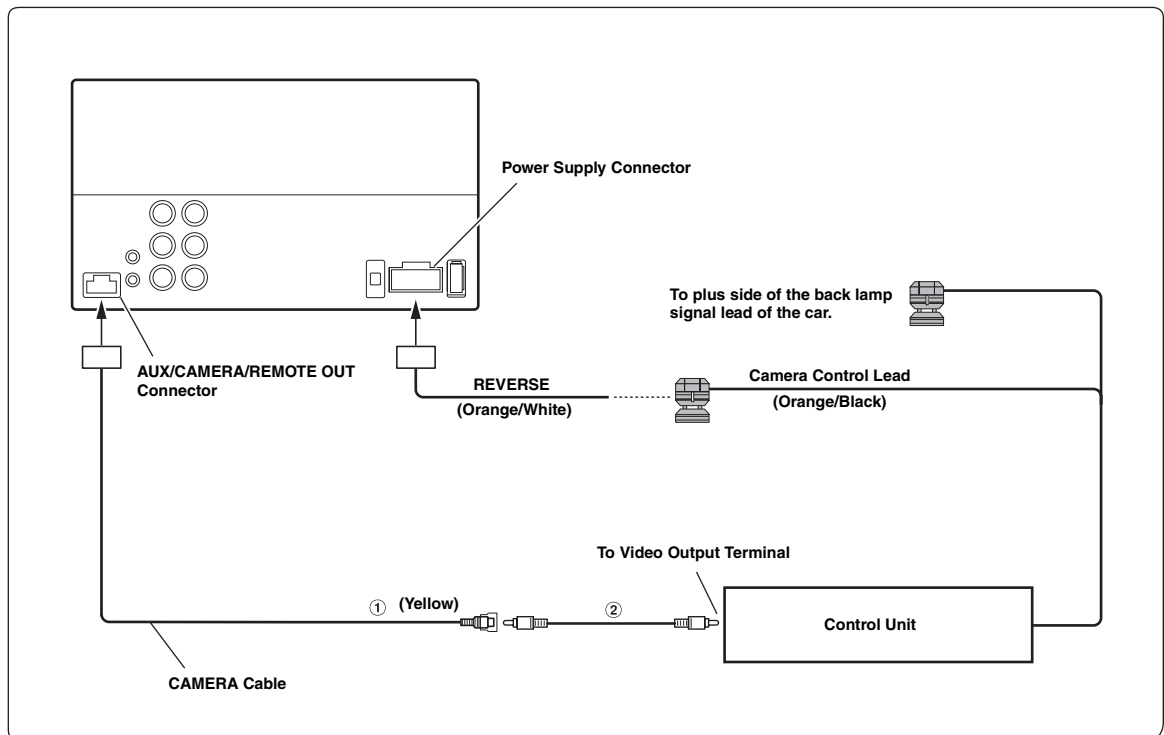


① CAMERA Input Connector

② RCA Extension Cable (sold separately)

- When a rear camera is used, make sure REVERSE cable is connected correctly.

Connection of HCE-C200F + HCE-C200R

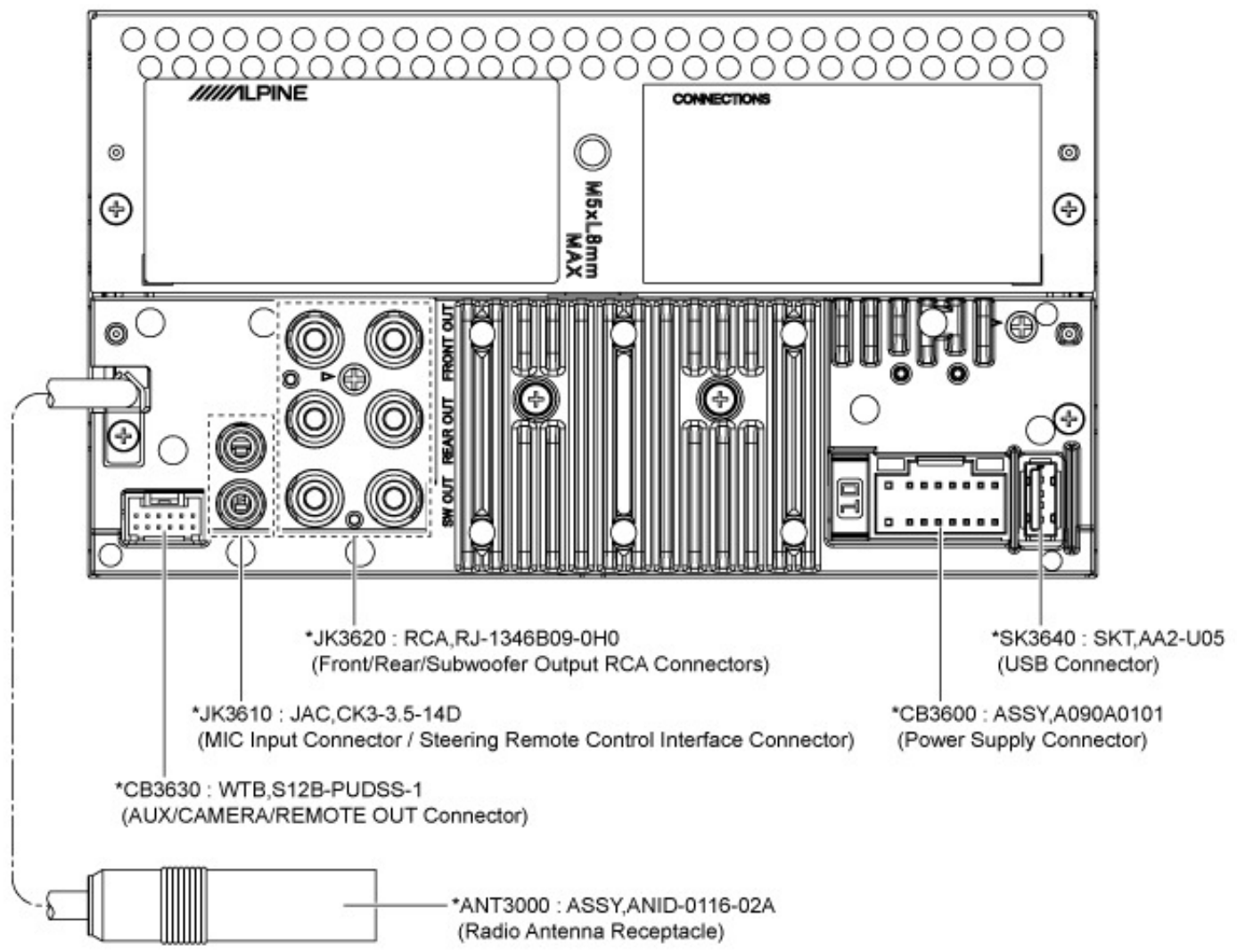


① CAMERA Input Connector

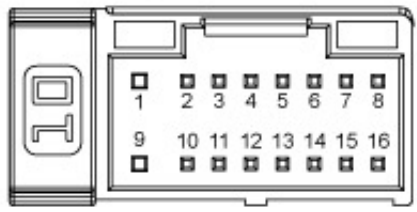
② RCA Extension Cable (HCE-C200R included)

- When a rear camera is used, make sure REVERSE cable is connected correctly.

Parts Identification

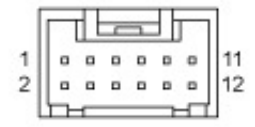


*CB3600 : ASSY,A090A0101

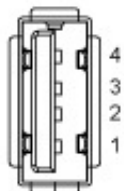


① BATT	⑨ GND
② RL-	⑩ FL-
③ RL+	⑪ FL+
④ RR-	⑫ FR-
⑤ RR+	⑬ FR+
⑥ PARKING	⑭ NC
⑦ O-REM	⑮ REVERSE
⑧ ANT+B	⑯ ACC_V

*CB3630 : WTB,S12B-PUDSS-1



① DBG_RX	⑦ AUX_L
② DBG_TX	⑧ REMOUT
③ CAMERA-V	⑨ AUX_R
④ CAMERA_VGND	⑩ NC (CAN GND)
⑤ AUX_IN_CVBS	⑪ NC (CAN_TX_OUT)
⑥ AUX_GND	⑫ NC (CAN_RX_IN)



①	VBUS
②	D-
③	D+
④	GND

A. Note for ELEP COAT removal operation

1. Mask the surrounding area to prevent HEXANE from flowing into those area (PC Card slot, the Flash, connector terminals, etc.)

Masking tape

Manufacturer : 3M

Product Name : 243 Masking Tape (20 x 18)

2. Warm the PWB using the heat chamber (or a dryer). The ELEP COAT removal process can be started when the ELEP COAT of the parts to be exchanged becomes soft.

< Condition >

1) Temperature setting : 60 °c

2) Heating Duration : 30 minutes

3. Carefully remove the ELEP COAT from all 4 sides using a brush.

Use a hard brush to remove the ELEP COAT from the terminal area.

Use a soft brush to remove the ELEP COAT from parts surrounding the exchange part.

Remove ELEP COAT using "Flux remover"

Note 1) Condensation may occur when using the Flux remover, so keep with in 3 seconds.

Note 2) When spraying the Flux remover, it has more effect if sprayed overall instead of in concentrated point.

FLUX REMOVER

Manufacture : HAKKO or equivalent

Product Name : 013A

B. Note for Application operation

1. Materials used.

Moisture proofing material : ELEPCOAT LSS-520 or equivalent

Diluting material : N-HEXANE or equivalent

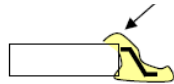
Brush : For Coating : Type No. 5 or 10

No. 5 General application

No. 10 Detailed application

2. Coated state

Moisture proofing material



The moisture proofing material must be coating so that moisture should not enter from the space in the terminal and the mold part.



3. Drying time

Room Temperature : About 5 minutes

Cold wind : Over 60 seconds


C. Moisture proofing material (ELEP COAT) storage and expiration

Storage and caution :

1. Seal well when not in use.
2. Do not store in area where temperature may reach 40°C and above for long periods of time.
3. No long term contact with the skin or exposure to fumes. (Ventilate well)
4. Do not mix with liquids or expose to flames.
5. Follow First-in / First-out rule. Use older products first.

Expiration : 6 months from production date

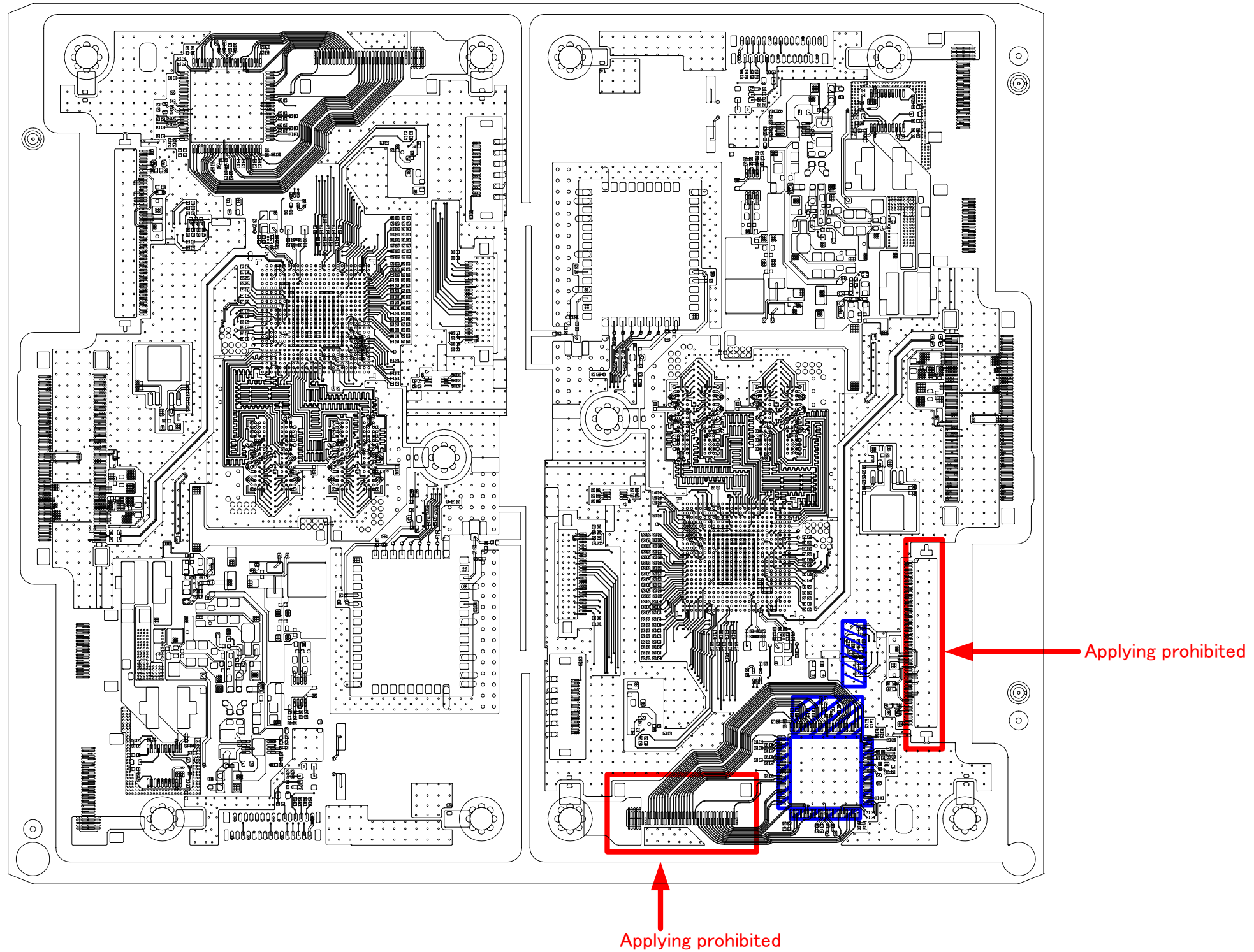
MAIN-P.W.Board (Component Side)

 is ELEP applying position

 is ELEP applying prohibited position

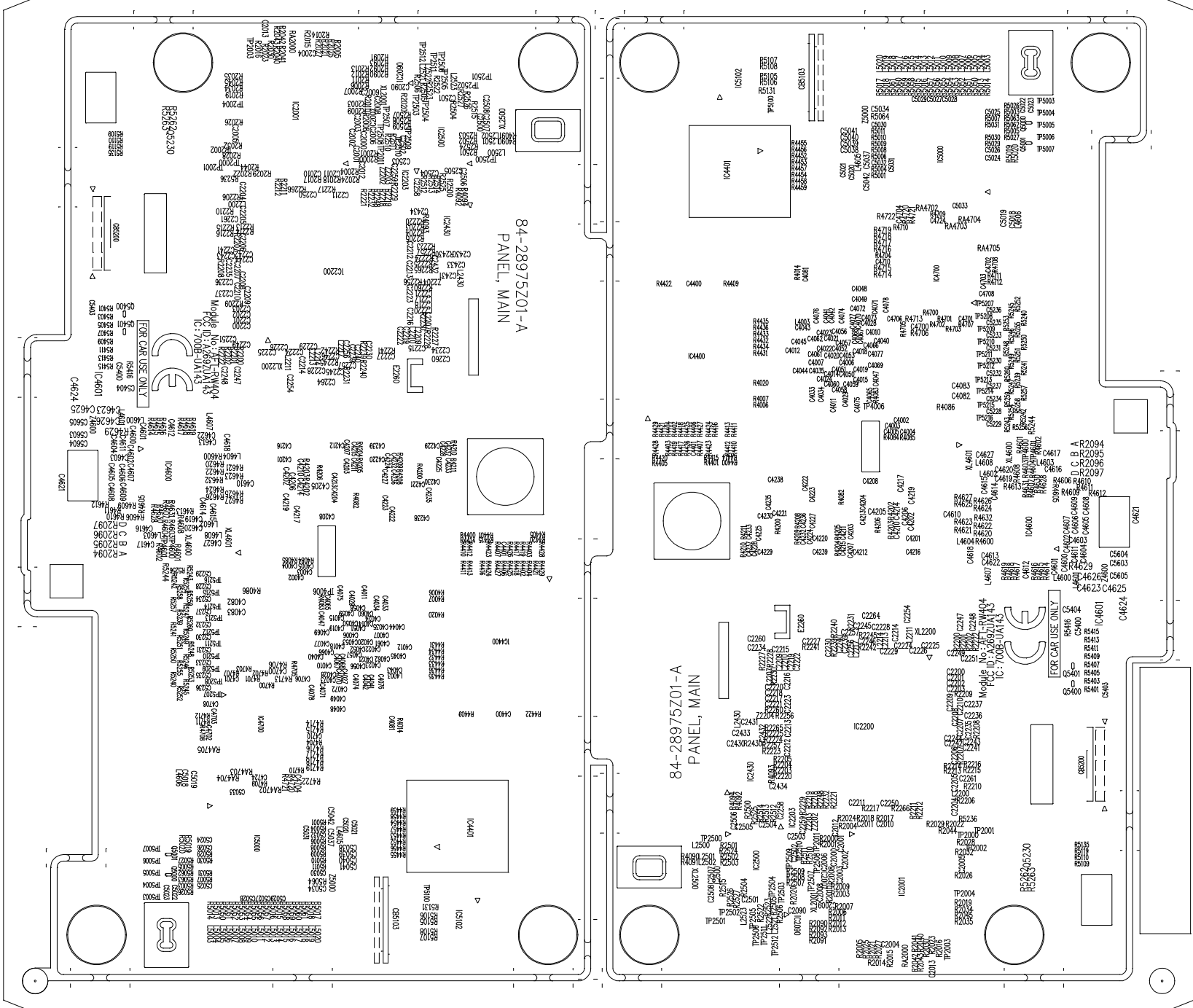
Applying Note Instruction :

1. No ELEP flowing into the hole of PWB
2. No applying to around parts
3. No applying to around electrical inspection land
4. Applying location of the IC be applied only terminal




No ELEPcoat spreading.

MAIN-P.W.Board (Foil Side)



84-28975201-A

DCDC-P.W.Board (Component Side)

 is ELEP applying position

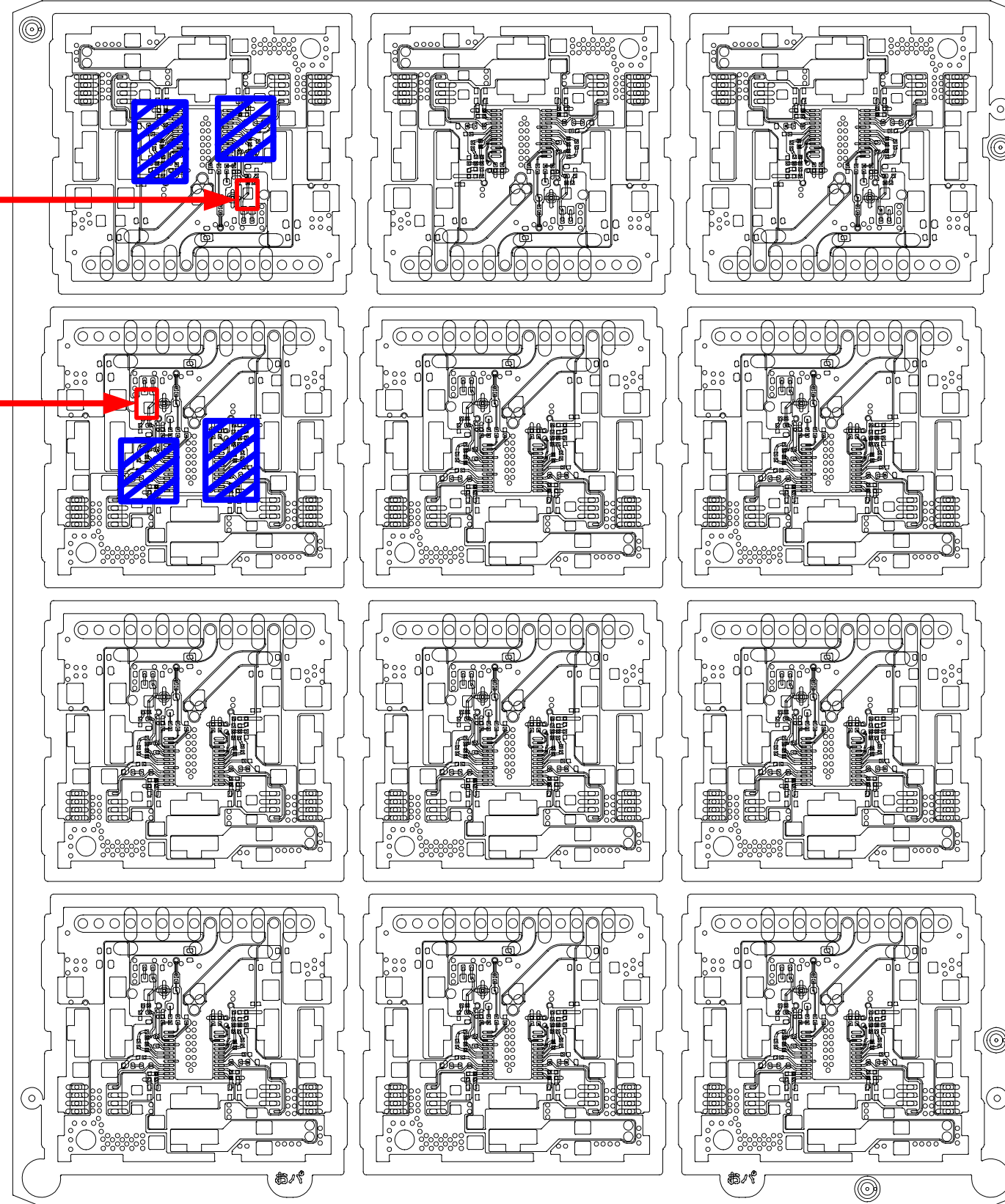
 is ELEP applying prohibited position

Applying Note Instruction :

1. No ELEP flowing into the hole of PWB
2. No applying to around parts
3. No applying to around electrical inspection land

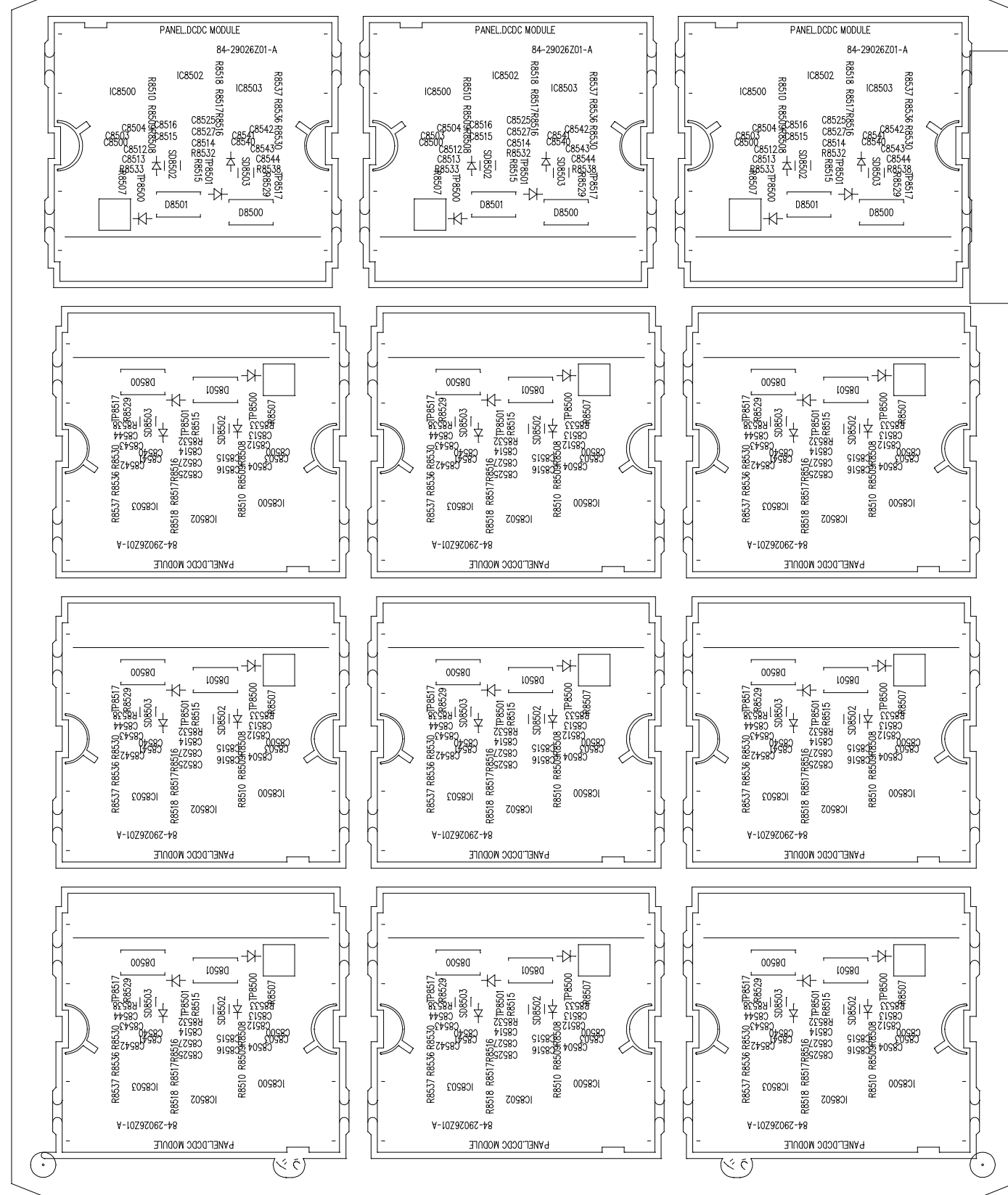
Applying prohibited 

Applying prohibited 



No ELEPcoat spreading.

DCDC-P.W.Board (Foil Side)



Block Diagram

