

Aladdin Temp-Rite® ...better by degrees.

250 East Main Street, Hendersonville, TN 37075
1-800-888-8018 or 615-537-3600
Fax 1-888-812-9956
www.aladintemprite.com

Plate Dispenser

(Unheated)

PD2WNH

PD3WNH



Copyright © 2012 Aladdin Temp-Rite®

Changes may be made to the information in this document without notification.

CONTENTS

I. INTRODUCTION	4
II. RECEIVING INSPECTIONS	5
III. SAFETY	6
III. INSTALLATION / OPERATION / CLEANING	6
INSTALLATION	6
OPERATION	6
CLEANING	7
IV. TROUBLESHOOTING	7
V. PARTS LIST	8
VI. WARRANTY & LIABILITY	10

I. INTRODUCTION

Aladdin Temp-Rite Plate Dispensers are available in two well and three well models. These units are designed specifically for use with a wide variety of 9" (22.9 cm) diameter plates. They are perfectly suited for use with the Heat On Demand *advantage* system, since plates do not need to be heated for this system to maintain proper hot food temperatures.

These dispensers can also be used with the Aladdin Convect-Rite III or Convect-Rite Prime cook chill rethermalization systems where plates are heated by the rethermalization process.

STANDARD FEATURES:

- Individual field adjustable, self - leveling stainless steel lifts, easily removable for cleaning
- Four 5" swivel casters, two with brake, for smooth and early maneuverability
- Convenient push/pull handle
- Lightweight with small foot print
- Side opening provide stack height visibility
- NSF listed
- Non marking plastic bumper

Model	PD2WNH	PD3WNH
# of wells	2	3
Length	36.8" (93.5 cm)	53.125" (134.9 cm)
Width	17.6" (44.7 cm)	17.6" (44.7 cm)
Height	39" (99 cm)	39" (99 cm)
Weight	112 lbs (50.8 kg)	168 lbs (76.2 kg)

II. RECEIVING INSPECTIONS

Your Aladdin Plate Dispenser is factory tested for performance and is free from defects when shipped. The utmost care has been taken in packaging this product to protect against damage in transit.

You should carefully inspect your Plate Dispenser to assure that no damage has occurred in transit. However, if damage is detected see the following damaged goods policy. Under no circumstances may a damaged unit be returned to Aladdin Temp-Rite without first obtaining written permission (return authorization). No credit will be issued for claims not reported to Aladdin within ten (10) business days from receipt of shipment.

ALADDIN DAMAGED GOODS POLICY

There are two types of damaged merchandise:

- Visual Damage
- Concealed Damage

Visual Damage – When the product being received is visibly damaged.

1. Receiver should not accept merchandise with visual damage.
2. Receiver must sign delivery receipt “refused merchandise due to damage” and specify damage.
3. Receiver should call Aladdin Customer Service immediately after refusal.
4. Carrier will notify Aladdin Traffic Department and a claim will be filed.
5. Carrier will send acknowledgement of claim within 7 days after receiving.

Concealed Damage – When damaged merchandise cannot be externally detected.

Any receiving operation should be looking for this type of damage. Sometimes, however, depending on the type of product, it is almost impossible to notice.

1. Merchandise must not be removed from point of delivery and all packaging must be kept intact.
2. Receiver must contact Aladdin Customer Service to report damage.
3. Aladdin traffic department will request inspection based on the dollar value of the cargo.
4. Aladdin traffic department will file a claim based on the findings of the inspection.

Failure to comply with these policies will result in the customer’s responsibility to file claims.

III. SAFETY

If you know how to correctly install, operate, clean, and service the Plate Dispenser your satisfaction with the equipment will be increased and safety will be enhanced. In accordance with generally accepted product safety labeling guidelines the following three signal words are used throughout this manual to alert you to potential hazards and to tell you how to avoid them.

The purchaser/user has the best knowledge and is in the best position to determine the operating conditions, appropriateness of the product for the operating environment, and safe use of the product. Aladdin Temp-Rite does not warrant, implied or expressly, that the product is fit for a particular use or operating environment.

WARNING: The word "Warning" identifies a potentially hazardous situation which, if not avoided COULD result in death or serious personal injury.

CAUTION: The word "Caution" identifies a potentially hazardous situation which, if not avoided MAY, result in minor or moderate injury. The word "Caution" may also be used to alert against unsafe practices and property damage only accidents.



"Important" is used to identify installation, operation, or maintenance information which is important but not hazard related.

III. INSTALLATION / OPERATION / CLEANING

Installation

Remove all packaging material from exterior.
Check for any damage. See section II Receiving Inspections.

Operation



Do NOT stack plates after the dispenser has bottomed out
Do NOT stack stainless steel pellet bases in this unit
Avoid bumping dispenser into doors or obstacles

Plate capacity					
Aladdin Sales codes	Aladdin Part Number	Description	Springs per Well	Total Capacity	
				2 well	3 well
J300	11635	9" Ivory Eaton	8	120	180
J361	10910	9" Mauve/Grey Eaton	8	120	180
J461	29405	9" Blue/Mauve Eaton	8	120	180
J561	29553	9" Teal/Teal Eaton	8	120	180
J700	98482	9" Bright white	8	120	180
J100	99772	9" Presentations	8	120	180

CLEANING

- Clean any debris from the casters or the lift mechanisms
- Use warm water with a mild detergent and a soft cloth, then dry
- Using a high pressure sprayer or cart wash machine for cleaning will void the warranty

CAUTION! - Harsh chemicals and insufficiently diluted sanitizer will damage stainless steel surfaces. Never use cleaning agents that contain phosphates or chlorides. These chemicals will cause permanent damage to stainless steel finishes and void equipment warranty.

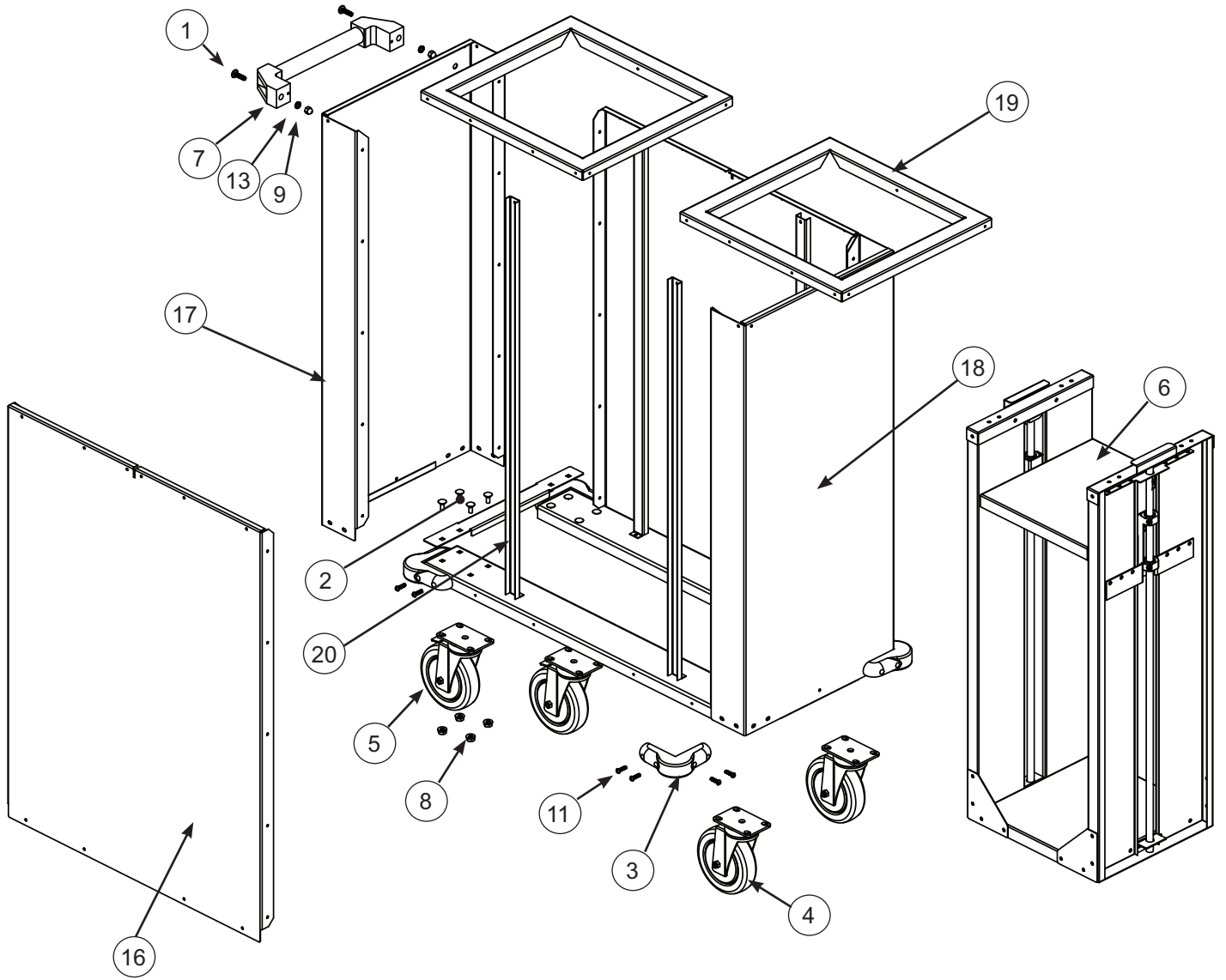
IV. TROUBLESHOOTING

Complaint	Problem	Solution
Unit does not roll easily	debris in caster	clean caster housing and caster
Plates don't descend properly	too many springs	detach one spring at a time on diagonal corners of the lift mechanism until unit works as desired
Plates are too low	not enough springs	attach one spring at a time on diagonal corners of the elevator until unit works as desired
	springs may be worn out	replace spring(s) see parts list

V. PARTS LIST

NOTE: 2 well and 3 well dispenser service parts are common

#	PN	Description	PD2WNH (2 well)	PD3WNH (3 well)
1	10238	bolt, 1/4-20 x 1" Phillips head truss SS	2	2
2	11710	bolt, carriage ,1/4"-20 x 0.625" SS	16	16
3	93052	bumper, corner	4	4
4	14519	caster, 5" swivel	2	2
5	14520	caster, 5" swivel with brake	2	2
6	92520	lift mechanism assy	2	3
7	11315	handle	1	1
8	99540	nut flange, 1/4-20, SS	16	16
9	39260	nut, acorn 1/4-20	2	2
10*	35188	rivet, SS 1/8" x 5/16"	-	-
11	98059	screw, 10-32 x 3/4" pan head SS	16	16
12*	12405	spring, 4", SS	-	-
13	28331	washer, lock 0.25" SS	2	2
14*	10816	lift mechanism bushing	-	-
15*	10638	lift mechanism rod	-	-
16a	12756	two well side panel	2	-
16b	12720	three well side panel	-	2
17	12722	panel end with handle	1	1
18	12721	panel end	1	1
19	11309	top panel	2	3
20	12723	plate guard bracket	4	6
* item not shown				



VI . WARRANTY & LIABILITY

ALADDIN TEMP-RITE®
EQUIPMENT
LIMITED WARRANTY

Effective August, 2012

Aladdin Temp-Rite® (“ATR”) warrants to the original purchaser that the equipment listed below shall be free from defects in material and workmanship under normal use for the applicable warranty term set forth below. ATR’s obligation under this warranty is limited to the repair or replacement, at the sole option of ATR, of any part which upon inspection and examination by ATR or its authorized agent is found to be defective. A written description detailing the nature of the claimed defect, together with the equipment claimed to be defective if required by ATR, must be delivered to ATR or its authorized agent within 30 days of discovery of the claimed defect (but in no event later than 30 days after the expiration of the applicable warranty term).

EQUIPMENT	WARRANTY TERM	
	PARTS	LABOR
PD2WNH	1 Year	90 Days
PD3WNH	1 Year	90 Days

*The warranty term commences 30 days after the date of ATR’s invoice for the equipment.

THE WARRANTIES AND REPRESENTATIONS OF ATR CONTAINED HEREIN ARE EXPRESSLY IN LIEU OF, AND THE BUYER WAIVES, ANY AND ALL OTHER WARRANTIES EXPRESS OR IMPLIED, INCLUDING THE WARRANTIES OF MERCHANTABILITY AND FITNESS FOR A PARTICULAR PURPOSE, AND ANY OTHER REMEDIES AGAINST ATR, WHETHER BASED UPON CONTRACT, NEGLIGENCE, STRICT LIABILITY OR OTHERWISE. ATR SHALL NOT BE LIABLE FOR ANY CONSEQUENTIAL OR INCIDENTAL DAMAGES OR ECONOMIC LOSS OF ANY NATURE (INCLUDING WITHOUT LIMITATION LOSS OF REVENUES AND/OR PROFITS) THAT MAY BE CLAIMED TO RESULT FROM ANY NEGLIGENCE OR BREACH OF WARRANTY OR CONTRACT BY ATR.

Exceptions and Exclusions

This warranty is issued only to the original purchaser, and is not transferable and applies only to the products installed within the United States of America, its territories and Canada. During the term of any labor warranty, ATR will pay all pre-approved shipping charges incurred in returning defective equipment to ATR and labor costs incurred in the removal and reinstallation of such equipment. Contact ATR before returning any defective equipment or otherwise performing any warranty repairs. ATR assumes no liability for any work or repair performed without its prior approval. After the expiration of any labor warranty, the original purchaser is responsible for all shipping charges incurred in returning defective equipment to ATR and labor for removing and reinstalling such equipment. ATR shall not be responsible for the replacement of expendable items like lamps and fuses or product failure resulting from normal wear and tear, improper installation, misuse, sabotage, abuse, neglect, accident, unauthorized alterations to repair, or other factors beyond the control of ATR. Neither this warranty, nor the liability of ATR may be modified or extended by action of any agent, distributor or other person or by custom or practice.

CALL ATR TOLL FREE AT 1-800-888-5426 IF YOU HAVE ANY QUESTIONS ABOUT THIS WARRANTY OR YOUR ATR PRODUCT.

Aladdin Temp-Rite[®]

250 East Main Street, Hendersonville, TN 37075

1-800-888-8018 • www.aladdintemprite.com • info@aladdin-atr.com

an Ali Group Company



The Spirit of Excellence