

# Horizontal Radiant Toaster

## HRT-4H

### Owner's Manual

Manufacturing Number  
9211040

## Table of Contents

<b>Overview</b> .....	2
Before Use .....	2
In Case of Damage .....	2
Website .....	2
<b>Service/Technical Assistance</b> .....	2
In Case of Damage .....	2
Equipment Information to Save.....	2
Authorized Service Agency .....	2
<b>Safety Information</b> .....	3
Installation .....	3
Maintenance.....	3
Service .....	3
<b>Specifications</b> .....	4
Dimensions .....	4
Electrical Specs & Plug Configuration.....	4
<b>Installation</b> .....	5
Unpacking .....	5
Location.....	5
Conveyor Motor Direction .....	5
<b>Operating Instructions</b> .....	6
Language Selection .....	6
Control Panel .....	6
Settings .....	6
Light/Dark Adjustment.....	7
Purging Product from Toaster .....	7
Factory Reset.....	7
<b>Maintenance</b> .....	7
Daily Cleaning .....	7
Removing/Installing Conveyor Belt Chain.....	8
<b>Troubleshooting</b> .....	9
<b>Wiring Diagram</b> .....	11
<b>Replacement Parts</b> .....	12
Parts List .....	12
Exploded Diagram 1.....	13
Exploded Diagram 2.....	14
<b>Notes</b> .....	15
<b>Limited Warranty</b> .....	16

## Overview

This unit is intended to be used for commercial applications, for example: in kitchens of restaurants, canteens, hospitals and in commercial enterprises such as bakeries, butcheries, etc., But not for continuous mass production of food.

### Before Use

This manual contains safety, installation, and operating procedures for the unit. Read and understand it completely before installing or operating the unit. Keep this document for reference. If the unit changes ownership, this manual must accompany it.

### In Case of Damage

If the unit arrives damaged, file a claim with the carrier immediately. Save all packing materials when filing a claim. Freight damage claims are the responsibility of the purchaser and are not covered under warranty.

### Website

[www.antunes.com](http://www.antunes.com)

## Service/Technical Assistance

### In Case of Damage

If any parts are missing or damaged, problems with the installation or operation of this product contact Antunes Customer Service immediately at +1-877-392-7856 (toll free).

Fill in the information in the next section and have it ready when calling for assistance. The serial number is on the specification sticker located on the system.

### Equipment Information to Save

Purchased from:

---

Date of purchase:

---

Model number:

---

Serial number:

---

Manufacturing number:

---

### Authorized Service Agency

Name:

---

Phone No:

---

Address:

---

## Safety Information

### Installation

- Read and understand all instructions before installing or using the unit.
- The unit **MUST** be installed by personnel qualified to work with electricity and plumbing.
- Install this unit to comply with the basic plumbing code of the Building Officials and Code Administrators, Inc. (BOCA) and the Food Service Sanitation Manual of the Food and Drug Administration (FDA).
- Install and locate the equipment only for its intended use as described in this manual.



### WARNING

**ELECTRICAL SHOCK HAZARD.**  
Failure to follow the instructions in this manual could result in serious injury or death.

Do not modify the power supply cord plug. If it does not fit the outlet, have a proper outlet installed by a qualified electrician.

Electrical ground is required on this appliance.

Check with a qualified electrician if you are unsure if the appliance is properly grounded.

Do **NOT** use an extension cord with this product.

The unit should be grounded according to local electrical codes to prevent the possibility of electrical shock. It requires a grounded receptacle with separate electrical lines, protected by fuses or circuit breaker of the proper rating.

**NEVER** unplug the power cord while the unit is running. Use the proper shutdown procedure before unplugging the power cord.



### WARNING

Bread may burn. Therefore toasters must not be used near or below curtains or other combustible walls and materials. Failure to maintain safe operating distances may cause discoloration or combustion.

## Operation

- The unit is furnished with a properly grounded cord connector. Do not attempt to defeat the grounded connector.
- Do not operate the unit if it has been damaged or dropped, if it has a damaged cord or plug, or if it is not working properly.
- Do not block or cover any openings on the equipment.
- Do not immerse the cord, unit, or plug in water.
- Keep the cord away from heated surfaces.
- Do not allow the cord to hang over the edge of a table or counter.
- Keep the area around the unit free and clear of all combustible materials. Failure to do so may result in fire or property damage.
- Bread may burn. Therefore toasters must not be used near or below curtains or other combustible walls and materials. Failure to maintain safe operating distances may cause discoloration or combustion.

**NOTE:** Turning off the power switch does **NOT** turn off all power to the unit. When the unit is plugged in and turned off, an **LED light flashes to indicate that the power cord is plugged in.**

## Maintenance

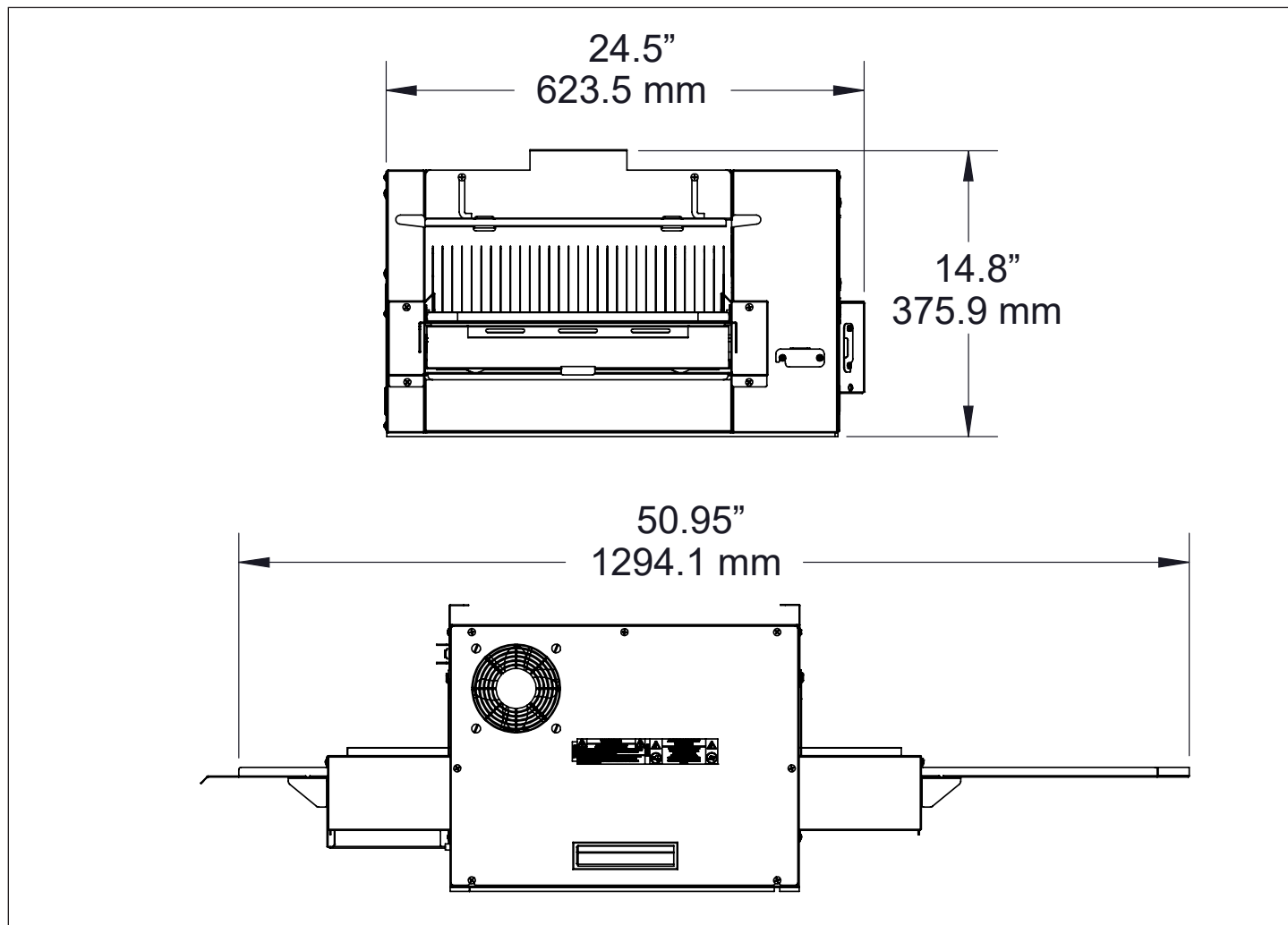
- Do not use abrasive materials; they can damage the unit's stainless steel finish.
- Do not use corrosive chemicals in this equipment.
- Chlorides or phosphates in cleaning agents (e.g., bleach, sanitizers, degreasers, and detergents) can permanently damage stainless steel equipment. The damage is usually in the form of discoloration, dulling of the metal surface finish, pits, voids, holes, or cracks. This damage is permanent and is not covered by warranty.
- Always use a soft, damp cloth for cleaning. Rinse with clear water and wipe dry. When required, always rub in the direction of metal polish lines.
- Routine cleaning should be performed daily with soap and water.
- Rub off finger marks and smears using soap and water.
- Do not clean unit or components in a dishwasher unless specifically specified in the cleaning instructions.
- Do not clean the unit with a water jet or steam cleaner.
- When using the citric acid cleaning solution as prescribed in this manual, follow the recommended manufacturer's safety precautions. Use gloves and eye protection when required.

## Service

- Inspection, testing, and repair of electrical equipment must be performed only by qualified service personnel.
- To avoid possible personal injury and/or damage to the unit, all inspections, tests, and repair of electrical equipment should be performed by qualified personnel **ONLY**. Contact Antunes Technical Service for adjustment or repair.
- Turn the power off, unplug the power cord, and allow unit to cool to room temperature before performing any service or maintenance.
- If the supply cord is damaged, it must be replaced by the manufacturer, its service agent, or a similarly qualified person in order to avoid an electrical hazard.
- Cleaning and user maintenance shall not be made by children without supervision.

# Specifications

## Dimensions



## Electrical Specifications & Plug Configuration

Model & Mfg. No	Volt	Watts	Hz.	Plug Description	Plug Configuration
HRT-4H 9211040	208	4200	60	NEMA L6-30P Plug 30 Amps, 250 VAC	

# Installation

## Unpacking

1. Open the large box. It contains:
  - HRT-4H toaster
  - Accessories box
2. Remove the accessories box from the large box.
3. With the help of another person, carefully remove the HRT-4H from the large box.
4. Remove all protective coverings from the unit.
5. Open the Accessories Box. It contains:
  - Owner's Manual
  - Feeder Trays

**NOTE:** Handle accessories with care. If an accessory becomes bent or damaged, it may not attach to the unit correctly, which may affect normal operation.

**NOTE:** If any parts are missing or damaged, contact Antunes Customer Service IMMEDIATELY at 1-877-392-7856 (toll free).

## Location

When placing the toaster into service, pay attention to the following guidelines:

- Make sure power is off and the toaster is at room temperature.
  - Do NOT block or cover any openings on the unit.
  - Do NOT immerse cord or plug in water.
  - Keep cord away from heated surfaces.
  - Do NOT allow cord to hang over edge of table or counter.
6. Place the toaster in the required position designated.
  7. Attach the Bun Feeder, Crumb Tray, and Feeder Trays (Figure 1).
  8. Plug the power cord into an appropriate power outlet. Refer to the specification plate for the proper voltage.

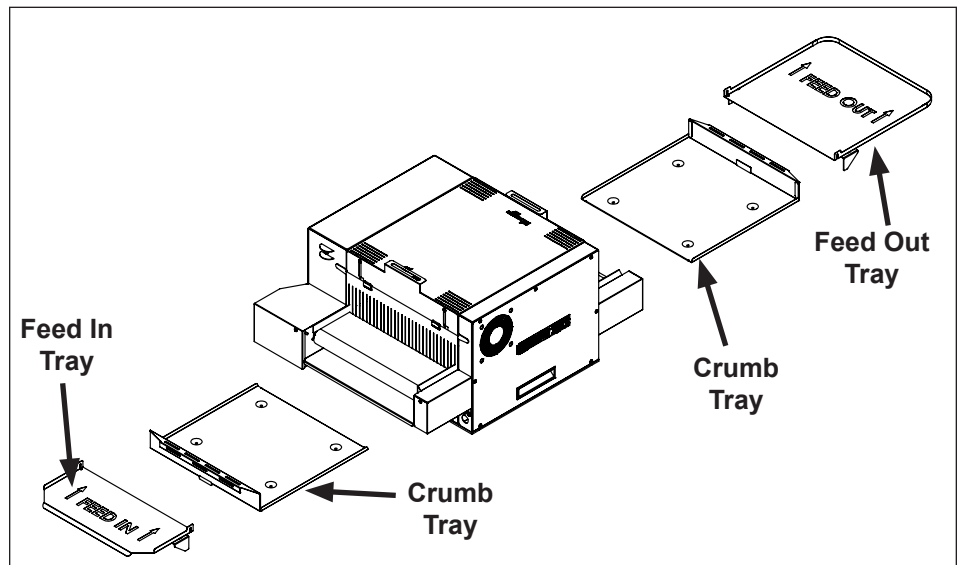


Figure 1. HRT-4H Components

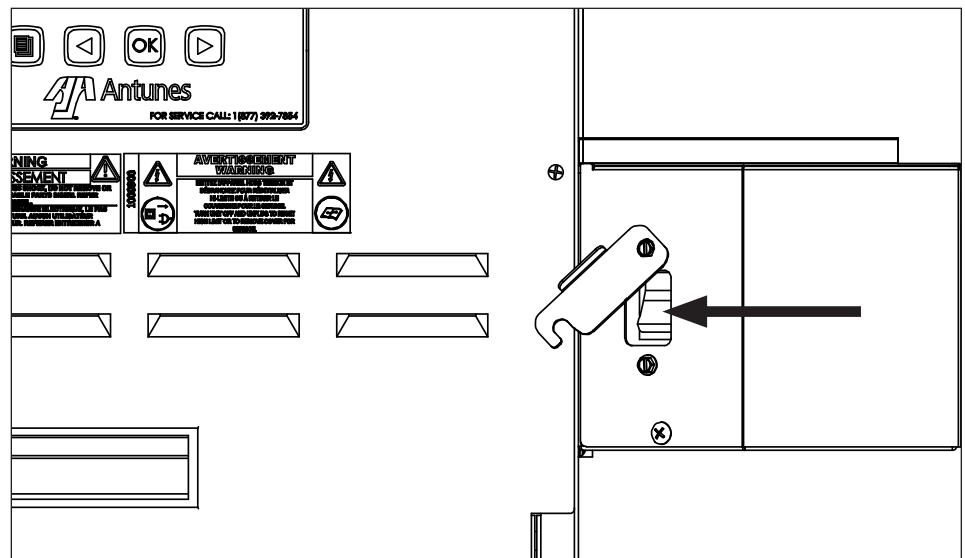


Figure 2. Motor Rocker Switch Location

## Conveyor Motor Direction

The HRT-4H features an internal rocker switch that allows the direction of the belt to change.

1. Disconnect the power from the unit.
2. Loosen the bottom screw and rotate (open) the switch cover to expose the rocker switch on the motor cover (Figure 2).
3. Press the rocker switch to the opposite position.

4. Close the front cover panel and re-install the screws.
5. Reconnect the power. The unit is ready to use.

**NOTE:** Reversing motor/conveyor direction requires swapping of the “feed in” and “feed out” trays.

# Operating Instructions

Follow these steps to start the toaster:

1. Plug in the power cord. Press and release the Power Button to turn on. Wait for warm-up to complete (approximately 20 minutes).
2. When the unit reaches operating temperature, the control panel displays "Ready".
3. Insert product into the designated area of the Feeder with the cut side facing UP. Toasted product drops into the Tray (Figure 2).

## Control Panel

Access the Control Panel by facing the front of the unit and moving to the left side of the unit. The LEDs on the control panel light to signify when each item is operating. The Service LED lights and the corresponding LED blinks when the unit requires service. A message also appears on the display.

## Settings

Follow the steps below to view and adjust the settings of the HRT-4H.

1. When the unit is plugged in, press and hold the **MENU** button (Figure 3) for five seconds. The control panel displays "Heater A" The display shows the setpoint, operating current, and SSR Duty cycle.

**NOTE:** The unit does not have to be turned on in order to access the settings menu.

2. Use the **LEFT** and **RIGHT** arrow buttons (Figure 4) to scroll through the settings, which appear in the following order:
  - Heater A
  - Heater B
  - Heater C
  - Toast Color
  - Units (°F/°C)
  - Buzzer (On/Off)
  - Languages
  - Service Messages
  - Control Temperatures
  - Motor (view only)
  - Conveyor (view only)
  - System Temperatures (view only)
3. To change a setting, press the **OK** button and then use the **LEFT** and **RIGHT** arrow buttons to adjust as needed. Press the **OK** button again to save the changes.

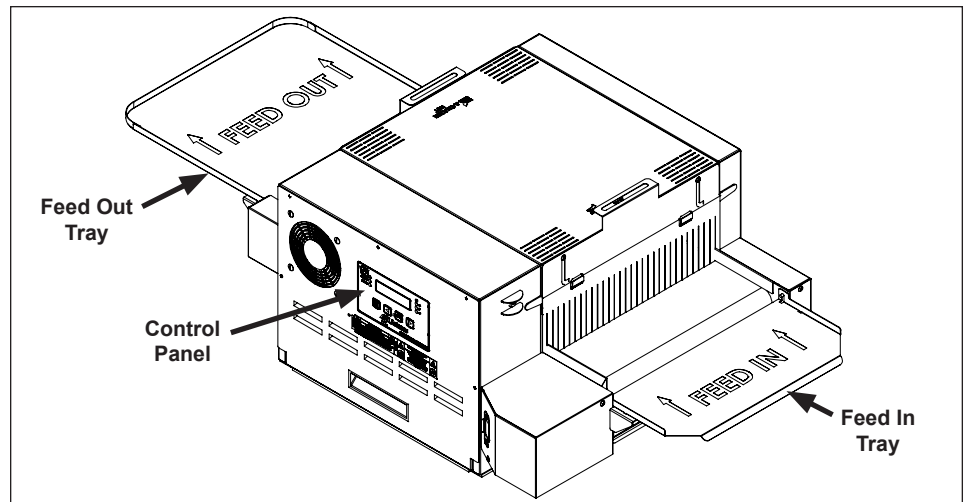


Figure 3. HRT-4H

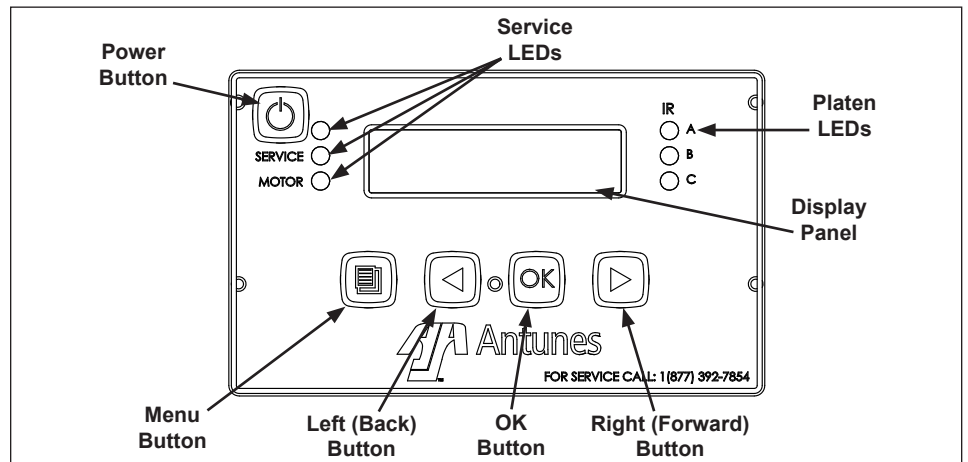


Figure 4. HRT-4H Control Panel

**NOTE:** System Temperatures, Controls Temperatures, and Conveyor cannot be adjusted.

## Light/Dark Adjustment

1. When the unit is turned on and ready, you can adjust the toast quality by pressing the **LEFT** and **RIGHT** arrow buttons on the control panel. After making an adjustment, test several products to verify they are toasting at the desired quality.

**NOTE:** This setting is maintained when the unit is powered off.

## Purging Product from Toaster

To purge product from the toaster, press and hold the **LEFT** and **RIGHT** arrow buttons. This speeds up the conveyors to force product out of the front of the toaster.

**NOTE:** If at any time the unit displays an error message or if it fails to operate properly, contact the factory immediately for service.

The table below describes the default settings for Heaters A, B, and C:

Value	Default Setting
Heater A & B	45%*
Heater C	40%*
Units	°F
Buzzer	ON
Toast Color	90*

**\*DO NOT ADJUST THESE SETTINGS.**

## Factory Reset

To reset the unit to the factory default settings:

1. Turn the unit off
2. Press and hold the LEFT and RIGHT arrow buttons and turn the unit on.
3. The toaster displays “Factory Settings Restored” on the display.

**NOTE:** For ALL Units, this sets the display temperature to °F (Fahrenheit). Refer to the “Settings” section of this manual to change the display temperature to °C (Celsius).

## Maintenance

### Daily Cleaning

1. Press and release the Power Button to turn the toaster off. The toaster enters a cool-down mode and automatically shuts down when complete.

**NOTE:** You do NOT need to wait for the cool down to complete.

**NOTE:** The Conveyor Belt Chain continues to turn during the cool-down period, allowing you to clean the entire Conveyor Belt Chain.

2. Put on neoprene gloves. Remove the Bun Feeder, Crumb Trays, and Feeder Trays (Figure 5).
3. Wash the Bun Feeder, Crumb Tray, and Feeder Trays at the three-compartment sink. Allow to air dry.
4. Clean the outside surfaces of the toaster with a paper towel sprayed with an approved multi-surface cleaner. Allow to air dry.

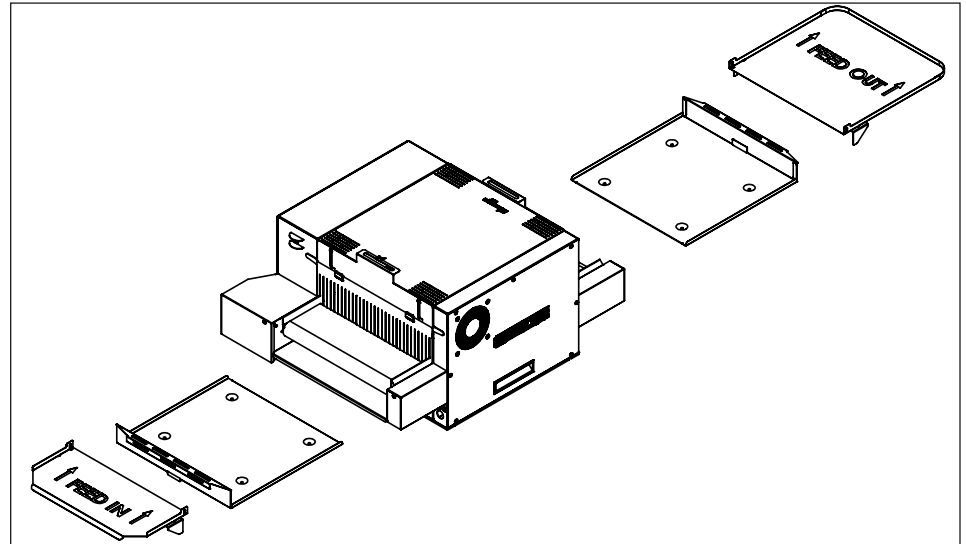


Figure 5. HRT-4H Cleaning Components

### Cleaning and Sanitizing the Belts (Daily)

1. From the rear of the unit (Figure 5), inspect the Conveyor Belt Chain for any damage. Replace if needed.
2. If the Conveyor Belt Chain is in good condition, spray a clean, sanitized towel with an approved multi-surface cleaner. Wipe the Conveyor Belt Chain for one revolution.

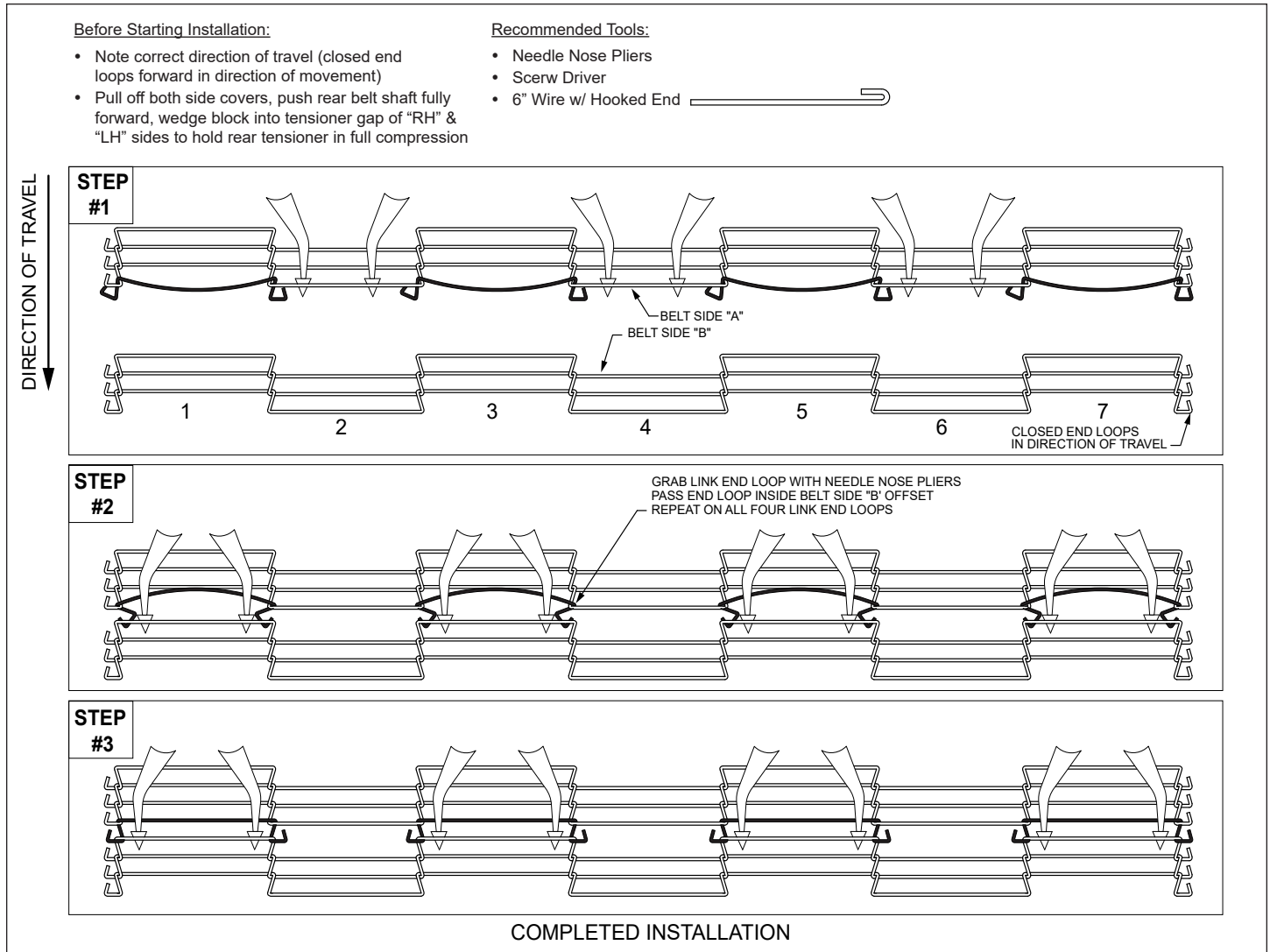
**NOTE:** You may need to wipe the Conveyor Belt Chain for more than one revolution.

3. Spray a clean, sanitized towel with an approved sanitizer. Wipe the Conveyor Belt Chain for one revolution.
4. Re-install the Bun Feeder, Crumb Tray, and Feeder Trays
5. Press and release the Power Button to turn the toaster on. Return to normal operation.

## Removing/Installing Conveyor Belt Chain

The Conveyor Belt Chain is considered a consumable item which can be easily adjusted or replaced.

The diagram below provides the procedure for removing and installing links to the Conveyor Belt Chain. This diagram also provides the procedure for removing and replacing the entire Conveyor Belt Chain.



## Troubleshooting

### **⚠ CAUTION**

To avoid possible personal injury and/or damage to the unit, inspection, test and repair of electrical equipment should be performed by qualified service personnel. The unit should be unplugged when servicing, except when electrical tests are required. If the troubleshooting steps listed do not solve your machine problem, contact an Authorized Service Agency for further assistance or service.

<b>Problem</b>	<b>Possible Cause(s)</b>	<b>Corrective Action</b>
Conveyor moving in wrong direction	Direction switch in the wrong position	Refer to Section "Conveyor Motor Direction" on page 5.
Display Reads "Hi-Limit Tripped"	Hi-Limit has tripped.	Remove black cap & firmly press the green button. Contact Antunes Technical Support at +1-877-392-7854 for assistance
Display Reads "Conveyor Stopped"	A Mechanical Obstruction has occurred which completely stalled the conveyor motor	Check the bottom wire conveyor belt & surrounding areas for any obstructions/jams. Call Antunes Technical Support at +1-877-392-7854 for assistance.
	Wire conveyor belt is too loose/sagging & getting jammed	If sagging is noticeable, proceed & remove necessary links to shorten up the belt. Call Antunes Technical Support at +1-877-392-7854 for assistance.
	Wire conveyor belt is broken/damaged & jammed.	Replace wire belt. Call Antunes Technical Support at +1-877-392-7854 for assistance.
Display Reads "Motor Running Slow"	A Mechanical Obstruction has occurred that is slowing down the conveyor motor	Check the bottom wire conveyor surrounding areas for any obstructions/jams. Call Antunes Technical Support at +1-877-392-7854 for assistance.
	Wire conveyor belt is too loose/sagging & getting jammed	If sagging is noticeable, proceed & remove necessary links to shorten up the belt. Call Antunes Technical Support at +1-877-392-7854 for assistance.
	Wire conveyor belt is broken/damaged & jammed.	Replace wire belt. Call Antunes Technical Support at +1-877-392-7854 for assistance.
Display Reads "Motor Slow"	A Mechanical Obstruction has occurred that is slowing down the conveyor motor	Check the bottom wire conveyor surrounding areas for any obstructions/jams. Call Antunes Technical Support at +1-877-392-7854 for assistance.
	Wire conveyor belt is too loose/sagging & getting jammed	If sagging is noticeable, proceed & remove necessary links to shorten up the belt. Call Antunes Technical Support at +1-877-392-7854 for assistance.
	Wire conveyor belt is broken/damaged & jammed.	Replace wire belt. Call Antunes Technical Support at +1-877-392-7854 for assistance.
Display Reads "Motor Load"	A Mechanical Obstruction has occurred that is slowing down the conveyor motor	Check the bottom wire conveyor surrounding areas for any obstructions/jams. Call Antunes Technical Support at +1-877-392-7854 for assistance.
	Wire conveyor belt is too loose/sagging & getting jammed	If sagging is noticeable, proceed & remove necessary links to shorten up the belt. Call Antunes Technical Support at +1-877-392-7854 for assistance.
	Wire conveyor belt is broken/damaged & jammed.	Replace wire belt. Call Antunes Technical Support at +1-877-392-7854 for assistance.
Display Reads "Control Temperature Fail"	Toaster Electrical compartment is overheating due to lack of airflow surrounding the toaster	Inspect the cooling fan on the side for operation & ensure it is clean. Call Antunes Technical Support at +1-877-392-7854 for assistance.
Display Reads "Motor Temperature Fail"	Toaster Electrical compartment is overheating due to Lack of airflow surrounding the toaster	Inspect the cooling fan on the side for operation & ensure it is clean. Call Antunes Technical Support at +1-877-392-7854 for assistance.
Display Reads "Internal Fault"	Control Board Malfunction	Cycle Power OFF/ON. If message persists, then Call Antunes Technical Support at +1-877-392-7854 for assistance.
Display Reads "Internal Error"	Control Board Malfunction	Cycle Power OFF/ON. If message persists, then Call Antunes Technical Support at +1-877-392-7854 for assistance.
Display Reads "System Fail A"	The solid state relay for Heater A has failed	Cycle Power OFF/ON. If message persists, then Call Antunes Technical Support at +1-877-392-7854 for assistance.
Display Reads "Sensor A Fail"	Thermocouple A has failed	Cycle Power OFF/ON. If message persists, then Call Antunes Technical Support at +1-877-392-7854 for assistance.

## Troubleshooting (continued)

Problem	Possible Cause(s)	Corrective Action
Display Reads "System Fail B"	The solid state relay for Heater B has failed	Cycle Power OFF/ON. If message persists, then Call Antunes Technical Support at +1-877-392-7854 for assistance.
Display Reads "Sensor B Fail"	Thermocouple B has failed	Cycle Power OFF/ON. If message persists, then Call Antunes Technical Support at +1-877-392-7854 for assistance.
Display Reads "System Fail C"	The solid state relay for Heater C has failed	Cycle Power OFF/ON. If message persists, then Call Antunes Technical Support at +1-877-392-7854 for assistance.
Display Reads "USB Power"	An unauthorized device has been plugged into the rear USB Port that is over loading the USB port.	Remove the device from the port. <b>NOTE:</b> Only approved devices for special toaster software loading should be used. Call Antunes Technical Support at +1-877-392-7854 for assistance.
No Display	Power Cord is not plugged into the outlet	Unplug the power cord then firmly plug back in
	No power at outlet	Contact your electrician
	Circuit Breaker is Tripped or OFF	Reset circuit breaker
	Equipment malfunction	Call Antunes Technical Support at +1-877-392-7854 for assistance.
Bread is toasting too light	Programmed settings have been inadvertently changed	Perform a factory reset as detailed in "Programming Section" of this owner's manual. Call Antunes Technical Support at +1-877-392-7854 for assistance.
	Light/Dark settings must be adjusted	Adjust the Light/Dark settings to achieve a darker product. Call Antunes Technical Support at +1-877-392-7854 for assistance.
	Using refrigerated product	Verify that only room temperature product is being used
	The front &/or rear curtain is damaged/missing several slits	Replace both curtains if damaged/missing. Call Antunes Technical Support at +1-877-392-7854 for assistance.
Bread is toasting too dark	Programmed settings have been inadvertently changed	Perform a factory reset as detailed in "Programming Section" of this owner's manual. Call Antunes Technical Support at +1-877-392-7854 for assistance.
	Wire conveyor belt is too loose/sagging causing it to skip/hesitate on sprockets	If sagging is noticeable, proceed & remove necessary links to shorten up the belt. Call Antunes Technical Support at +1-877-392-7854 for assistance.
	Light/Dark settings must be adjusted	Adjust the Light/Dark settings to achieve a lighter product. Call Antunes Technical Support at +1-877-392-7854 for assistance.
	The front &/or rear curtain is damaged/missing several slits	Replace both curtains if damaged/missing. Call Antunes Technical Support at +1-877-392-7854 for assistance.



# Replacement Parts

## Parts List

(See Exploded Views for more information)

### NOTICE

Use only genuine Antunes replacement parts in this unit. Use of parts other than those supplied by the manufacturer will void the warranty.

Item No.	Part #	Description	Qty.
1	7001031	Control Housing Probe Assembly (Incl. Items #29, 94, & 95)	1
2	0014743	Relay - Sink Bracket Assy (Incl. Items #36, 66, 70, 73, 85, 90, 91, 92, 93, 101, & 102)	1
3	0015844	Top Cover Assembly	1
4	0015960	Base Assembly (Incl. Items #5, 17, 18, 19, 27, 33, 47, 66, 70, 72, 74, 75, 76, 79, 96, 97, 98, & 103)	1
5	0015961	End Housing Assy (Incl. Items #66, 70, 96, 97, 103)	1
6	0015963	End Hsg Door Assy (Incl. Items #43, 50, 52, 54, 57, 77, 83, 108)	1
7	0015964	Cont Hsg Door Assy (Incl. Items #42, 50, 52, 55, 57, 66, 67, 77, 83, 99, 104, 108)	1
8	0015969	Heating Element Assy (Incl. Items #41, 74, 81, 89)	1
9	7001041	Motor Assembly (Incl. Items #	1
10	0015977	Motor Pcb Assembly (Incl. Items #	1
11	0021482	Bearing Bracket Clip Weldment	2
12	0022052	Weldment, Probe Bracket, Ctl Hsg (Incl. Items #34 & 56)"	1
13	0025139	Top Inside Cover Weldment	1
14	0025155	Wmnt, Tray	1
15	0025156	Wmnt, Crumb Tray	2
16	0025216	Wmnt, Tray	1
17	0209335	Hrt-4H Gasket 23.113"	2
18	0209336	Hrt-4H Gasket, 16.697"	2
19	0400329	Grommet, Rubber 2" Dia	1
20	0400701	Insulation, Control Hsg	1
21	0400702	Mica Insulation, End Hsg	1
22	0400708	Nomex Insulation, Control Housing	1
23	0406523	Insulation, Heater Top	1
24	0406526	Insulation, Heater Side	1
25	0500464	Bearing Retainer	1
26	0503376	Retainer, Bearing	1
27	0504083	Guard, Hi-Limit	1
28	0504304	Plate, Spacer	2
30	0506908	Bracket, Tensioner	2
31	0506929	Cover, Terminal	1
32	0506930	Guard, Terminal	2

Item No.	Part #	Description	Qty.
33	0507194	Cover, Usb	1
34	0508164	Bracket, Thermocouple, Ctl Hsg	1
35	0511773	Cover, Conv. Housing Drive Side	1
36	0512160	Ele Bracket	1
37	0512165	Plate, Motor Mounting	1
38	0513560	Bkt, Curtain	2
39	0514805	Cover, Conv. End Hsg	2
40	0514806	Cover, Conv. End Hsg	1
41	0514837	Heater Retainer Plat	2
42	0515549	Cover, Ctrl Housing	1
43	0515552	Cover, End Housing	1
44	0515893	Plate, Reflector	1
45	0600141	Spring, Compression	2
46	0808505	Grill, Heater	1
47	0808508	Rod, Support, 15.875" Lg	3
48	0808509	Belt Wire Flat - Flax	1
49	0900448	Curtain, Front (Incl. In 0015844)	2
50	1000900	Label, Service Warning	2
52	1001213	Label, Shock Hazard	2
54	1001718	Label, Wire Diagram	1
55	1002901	Label, Control	1
56	2000243	Tube, Probe	2
57	2100212	Handle, Pocket Pull, Snap-In	2
58	2100334	Thrust Strip, Teflon, 2.140 X 1	4
59	7001033	Bearing Assy., Hi-Temp 1 1/8 OD x 1/2 ID Kit	1
60	2150254	Roller (Incl. in kit 7001015)	4
61	7001015	Sprocket, Drive 17 Tooth	2
62	2150383	Bearing, 7/8" Od X 1/2" Id	1
64	2152151	Drive Shaft	1
65	2152152	Drive Shaft	1
66	3040105	Nut, Hex 'Keps' #4-40 Zinc	10
67	3040117	Hex Spacer, Male-Female 4-40 X 3/4Lg	5
68	3040234	Hhcs, #4-40 X 1/4 Lg, 18-8 Ss	2
69	3060101	Nut,Hex #6-32 St.Stl	4
70	3060130	Nut,Hex"Keps" #06-32 Steel; Zinc Plated	10
71	3060162	Washer Flat, # 6, 3/8 Od X 5/32 Id X .03	4
72	3080124	8-32 X .5 Lg Round Hd. One-Way	1
73	3080157	Screw, #8-32 X 3/8" Lg Phtrshd	47
74	3080199	Nut, 8-32 Keps 10-18 Sst	19
75	3080203	Screw #8-32 X 3/8 With Int. Tooth Washer	27
76	3080227	Screw Mach #8-32 X 3/8 Hxhd Sltd; Shoulder S/S	4
77	3100109	Scr,Mach #10-32 X 3/8	8
78	3100146	Nut, Hex "Keps" #10-32	31

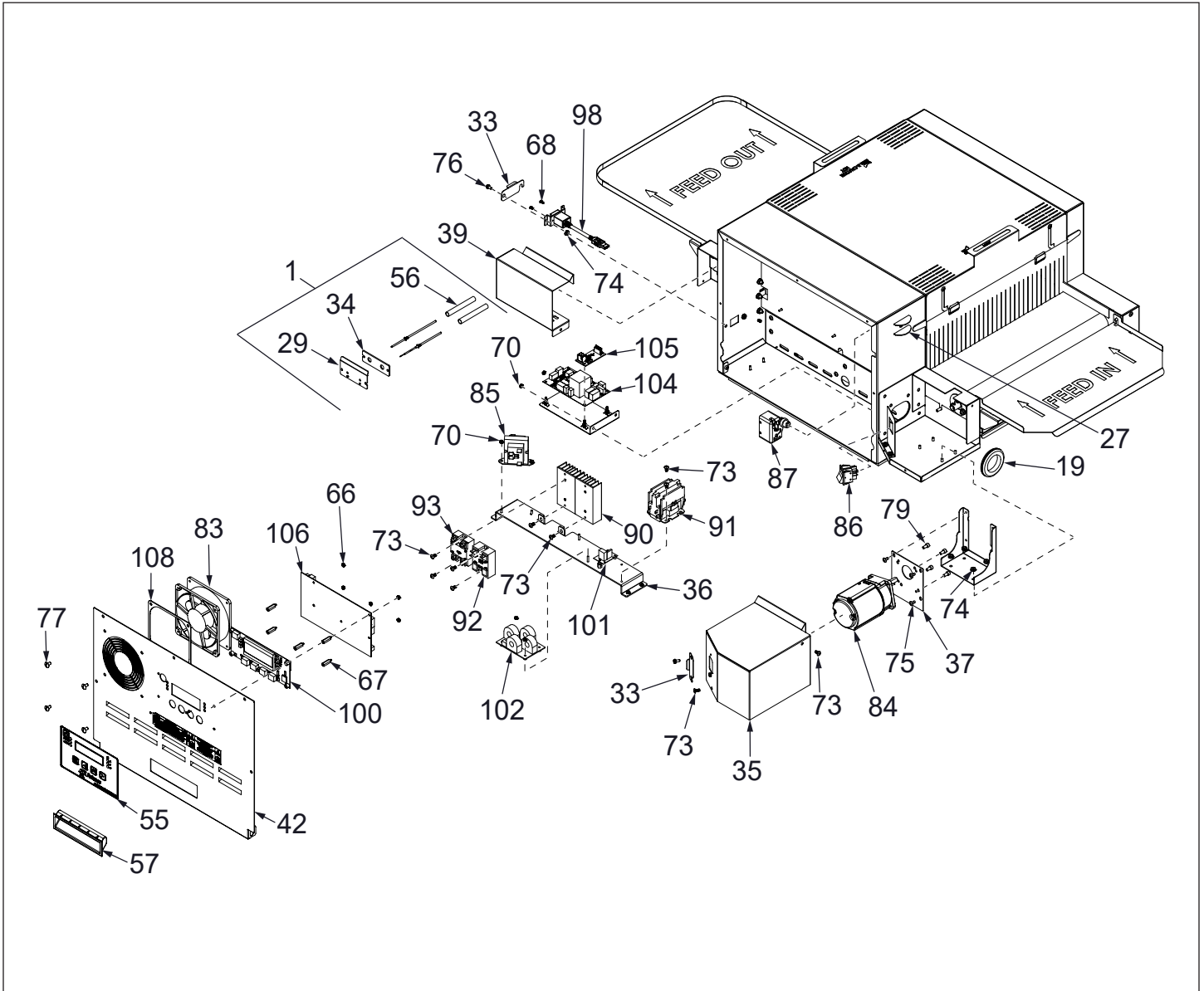
## Replacement Parts

### Continued

Item No.	Part #	Description	Qty.
79	3100199	Scr, #10-32 X 3/8 Lg Socket Hd Cap	15
80	3100204	Screw, Fhph, #10-32 X 1/4 Lg	2
81	3100215	Scr, Shldr #10-32 W/ 1/4" Shldr S.S.	2
82	3100224	Set Screw, Knurl Grip Cup Point, 10-32 Unf-2A X 1/4"	2
83	7001146	Fan, Blower	2
84	4000217	Motor, 230V	1
85	7001145	Transformer, 240 V/12Vac	1
86	4010335	Switch, Rocker 250V Dbl Pole, Chassis Mt	1
87	7001144	Thermostat, Hi-Limit 700F	1
88	4030596	Heating Element, 3.5 Kw / 208 Vac	1
89	4030597	Heater-Ir, Bottom	1
90	4050180	Heat Sink	2
91	4050236	Contactora, 2 Pole Normally Open	1
92	7001142	Relay, S.S. Dual Pole W/ Conn-Receptical	1
93	7001143	Relay, Random Phase, Solid State	1
96	4060374	Grounding Lug	1
97	7001609	Terminal Block, S-Series	1
98	4060451	Usb, A-F Pnl Mount/A-M Sheld	1
99	4060453	Idc Ribbon Cable With Female Connectors	1
100	7001043	Display Board Kit	1
101	7001471	Snubber Board Kit	1
102	7001138	Assembly, Pcb - Current Sense Board Kit	1
103	4070156	Varistor Board	1
104	7001040	Assy-Pcb, Mcd Horz Toast Motor Board Kit	1
105	4070465	Pcb, Motor Reverse	1
106	4070530	Main Pcb, Portillo'S	1
107	4030596	Coil	2
108	0515685	Bracket, Fan	1

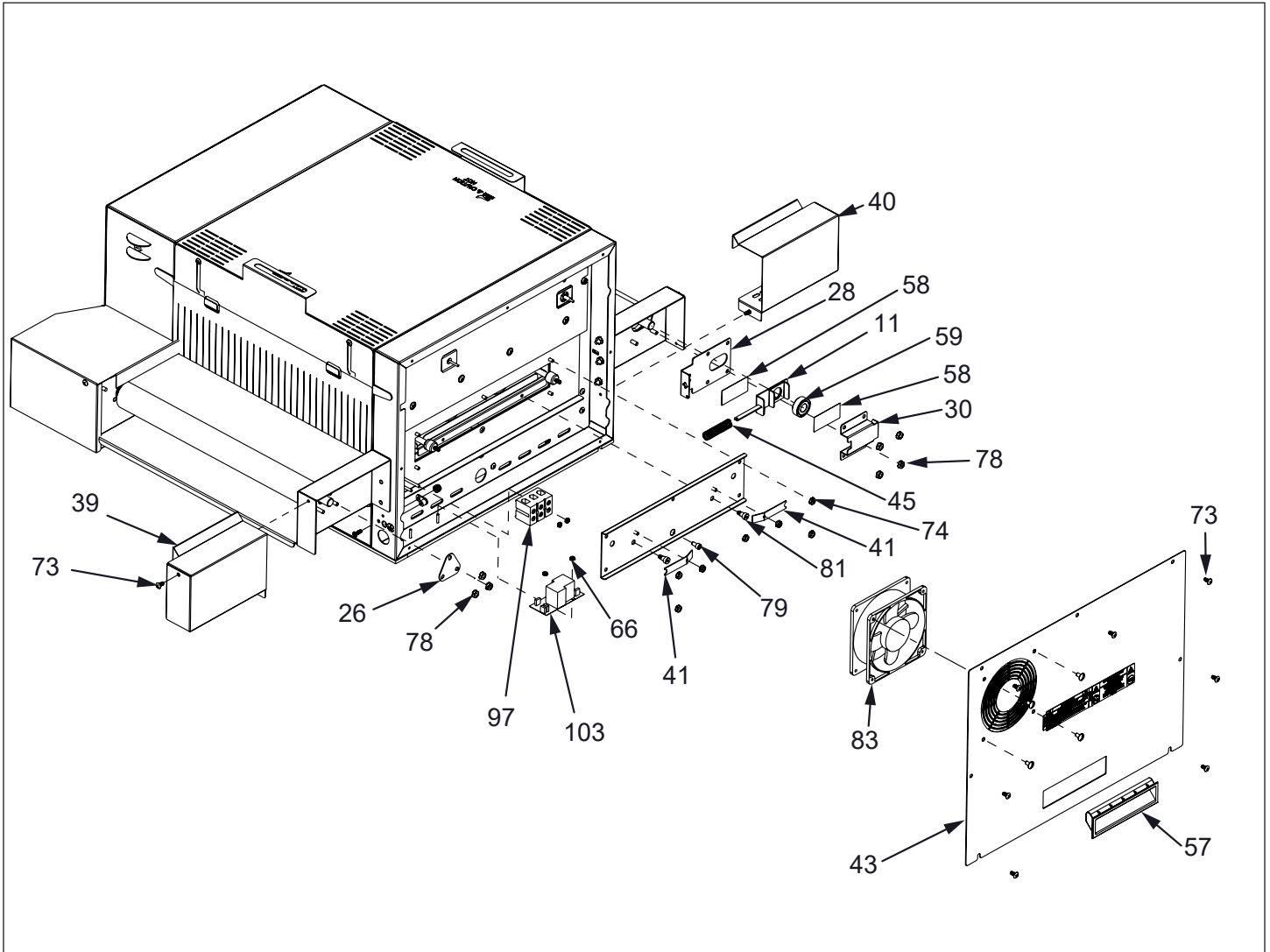
# Replacement Parts

## Exploded Diagram 1



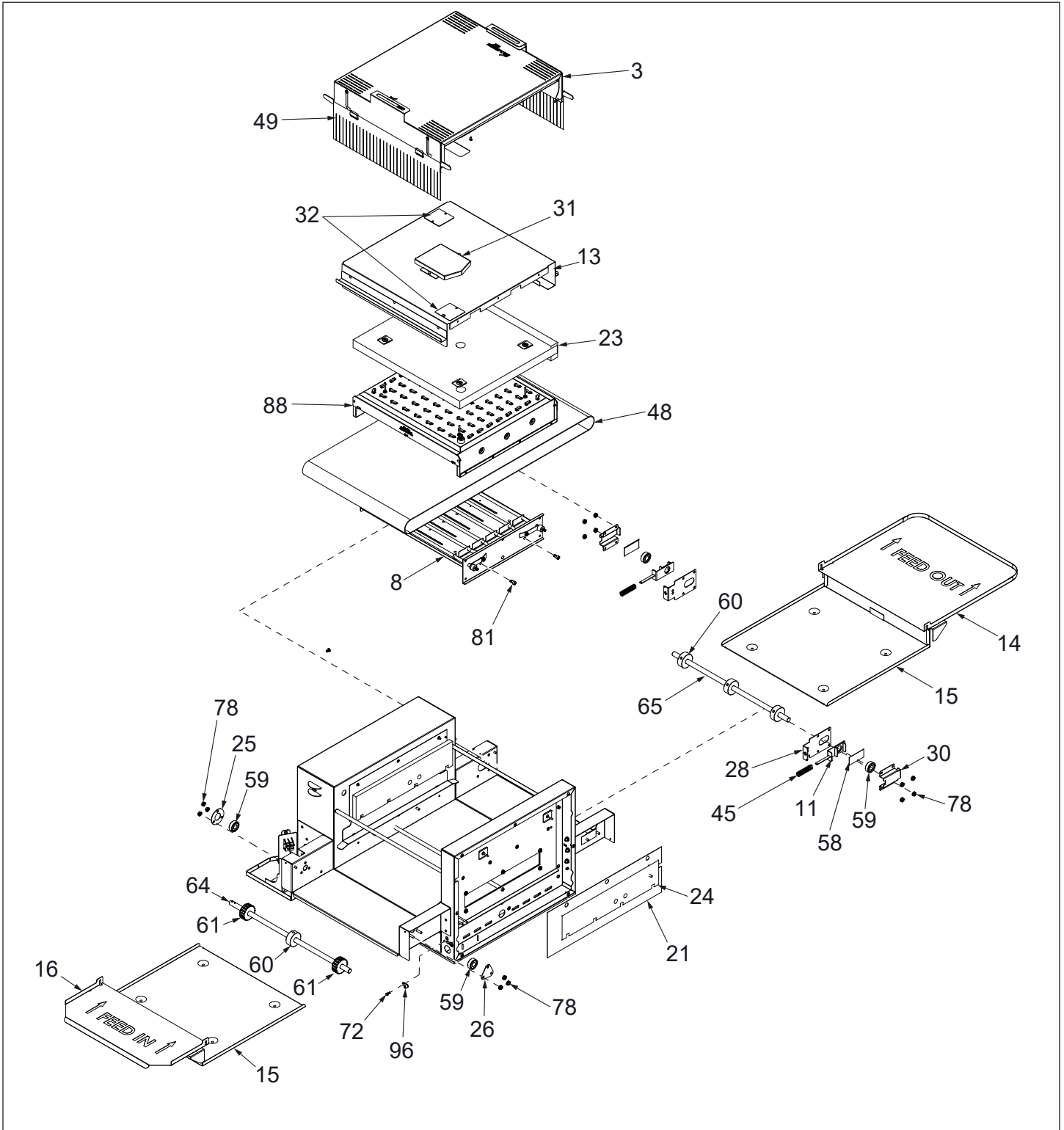
# Replacement Parts

## Exploded Diagram 2



# Replacement Parts

## Exploded Diagram 3





## Limited Warranty

Equipment manufactured by Antunes has been constructed of the finest materials available and manufactured to high quality standards. These units are warranted to be free from electrical and mechanical defects for a period of one (1) year from date of purchase under normal use and service, and when installed in accordance with manufacturer's recommendations. To insure continued operation of the units, follow the maintenance procedures outlined in the Owner's Manual. During the first 12 months, electromechanical parts, non-overtime labor, and travel expenses up to 2 hours (100 miles/160 km), round trip from the nearest Authorized Service Center are covered.

1. This warranty does not cover cost of installation, defects caused by improper storage or handling prior to placing of the Equipment. This warranty does not cover any damage to power cords, plugs and/or receptacles. This warranty does not cover overtime charges or work done by unauthorized service agencies or personnel. This warranty does not cover normal maintenance, calibration, or regular adjustments as specified in operating and maintenance instructions of this manual, and/or labor involved in moving adjacent objects to gain access to the equipment. This warranty does not cover consumable/wear items. This warranty does not cover water contamination problems such as foreign material in water lines or inside solenoid valves. It does not cover water pressure problems or failures resulting from improper/incorrect voltage supply. This warranty does not cover Travel Time & Mileage in excess of 2 hours (100 miles/160 km) round trip from the nearest authorized service agency.
2. Antunes reserves the right to make changes in design or add any improvements on any product. The right is always reserved to modify equipment because of factors beyond our control and government regulations. Changes to update equipment do not constitute a warranty charge.
3. If shipment is damaged in transit, the purchaser should make a claim directly upon the carrier. Careful inspection should be made of the shipment as soon as it arrives, and visible damage should be noted upon the carrier's receipt. Damage should be reported to the carrier. This damage is not covered under this warranty.
4. Warranty charges do not include freight or foreign, excise, municipal or other sales or use taxes. All such freight and taxes are the responsibility of the purchaser.
5. THIS WARRANTY IS EXCLUSIVE AND IS IN LIEU OF ALL OTHER WARRANTIES, EXPRESSED OR IMPLIED, INCLUDING ANY IMPLIED WARRANTY OR MERCHANTABILITY OR FITNESS FOR A PARTICULAR PURPOSE, EACH OF WHICH IS HEREBY EXPRESSLY DISCLAIMED. THE REMEDIES DESCRIBED ABOVE ARE EXCLUSIVE AND IN NO EVENT SHALL ANTUNES BE LIABLE FOR SPECIAL CONSEQUENTIAL OR INCIDENTAL DAMAGES FOR THE BREACH OR DELAY IN PERFORMANCE OF THIS WARRANTY.

The warranty does not extend to:

- Damages caused in shipment
- Installation of electrical service
- Installation, calibration, or adjustment
- Damage to Power Cord and/or plug
- Damage to Receptacles and or external water lines
- Normal maintenance outlined in this manual
- Consumable parts such as egg rings, gaskets, rubber feet, labels, O-rings, light bulbs, etc.
- Malfunction resulting from improper service or maintenance
- Damage caused by improper installation, improper use, abuse, or careless handling
- Damage to Water Pump and/or Water Pump Valves caused by leaving water in the reservoir overnight.
- Damage from moisture coming in contact with electrical components
- Damage from tampering with, removal of, or changing preset controls or safety devices
- Damage caused by parts or components not provided by Antunes
- Failure to meet water quality requirements



**Corporate Headquarters**  
Carol Stream, IL, USA  
Phone: +1.630.784.1000  
Toll Free: +1.800.253.2991  
Fax: + 1.(630).784-1650

**China Facility**  
Suzhou, China  
Phone: +84.512.6841.3637  
Fax: +86.512.6841.3907

**India Facility**  
Chennai, India  
Phone: +91.44.25532212  
Fax: +91.44.25532415