

Tall Bun Feeder Shown

Gold Standard Toaster

Model GST-3V

Owner's Manual

Manufacturing Numbers:
9210876 and 9210878



Table of Contents

Overview	2
Before Use	2
In Case of Damage	2
Website	2
Service/Technical Assistance	2
In Case of Damage	2
Equipment Information to Save.....	2
Authorized Service Agency	2
Safety Information	3
Installation	3
Maintenance.....	3
Service	3
Specifications	4
Shipping Weight.....	4
Installation	5
Operation	5
Light/Dark Adjustments	5
Bun Compression Setting	5
User Mode	6
Manager Mode	6
Safety Features	6
Hi-Limit Control	6
Purging Buns from Toaster.....	6
Fault Messages	7
Error Codes	7
Daily Cleaning	7
Clean the Toaster and Belt Wraps	7
Examples of Damaged Belts.....	7
Quarterly Cleaning	8
Remove Belt Wraps and Clean Rollers.....	8
Annual Cleaning	9
Clean Fans & Electrical Housings.....	9
Troubleshooting	10
Replacement Parts	12
Parts List	12
Exploded Diagram 1.....	14
Exploded Diagram 2.....	15
Exploded Diagram 3.....	16
Exploded Diagram 4.....	17
Exploded Diagram 5.....	18
Wiring Diagram	19
Limited Warranty	20

Overview

This unit is intended to be used for commercial applications, for example: in kitchens of restaurants, canteens, hospitals and in commercial enterprises such as bakeries, butcheries, etc., But not for continuous mass production of food.

Before Use

This manual contains safety, installation, and operating procedures for the unit. Read and understand it completely before installing or operating the unit. Keep this document for reference. If the unit changes ownership, this manual must accompany it.

In Case of Damage

If the unit arrives damaged, file a claim with the carrier immediately. Save all packing materials when filing a claim. Freight damage claims are the responsibility of the purchaser and are not covered under warranty.

Website

www.antunes.com

IMPORTANT

Antunes reserves the right to change specifications and product design without Note. Such revisions do not entitle the buyer to corresponding changes, improvements, additions or replacements for previously purchased equipment.

IMPORTANT

Keep these instructions for future reference. If the unit changes ownership, be sure this manual accompanies the equipment.

Service/Technical Assistance

In Case of Damage

If any parts are missing or damaged, problems with the installation or operation of this product contact Antunes Customer Service immediately at +1-877-392-7856 (toll free).

Fill in the information in the next section and have it ready when calling for assistance. The serial number is on the specification sticker located on the system.

Equipment Information to Save

Purchased from:

Date of purchase:

Model number:

Serial number:

Manufacturing number:

Authorized Service Agency

Name:

Phone No:

Address:

Safety Information

Installation

- Read and understand all instructions before installing or using the unit.
- Install this unit to comply with the basic plumbing code of the Building Officials and Code Administrators, Inc. (BOCA) and the Food Service Sanitation Manual of the Food and Drug Administration (FDA).
- Install and locate the equipment only for its intended use as described in this manual.



WARNING

ELECTRICAL SHOCK HAZARD.

Failure to follow the instructions in this manual could result in serious injury or death.

Do not modify the power supply cord plug. If it does not fit the outlet, have a proper outlet installed by a qualified electrician.

Electrical ground is required on this appliance.

Check with a qualified electrician if you are unsure if the appliance is properly grounded.

Do NOT use an extension cord with this product.

The unit should be grounded according to local electrical codes to prevent the possibility of electrical shock. It requires a grounded receptacle with separate electrical lines, protected by fuses or circuit breaker of the proper rating.

NEVER unplug the power cord while the unit is running. Use the proper shutdown procedure before unplugging the power cord.

Operation

- The unit is furnished with a properly grounded cord connector. Do not attempt to defeat the grounded connector.
- Do not operate the unit if it has been damaged or dropped, if it has a damaged cord or plug, or if it is not working properly.
- Do not block or cover any openings on the equipment.
- Do not immerse the cord, unit, or plug in water.
- Keep the cord away from heated surfaces.
- Do not allow the cord to hang over the edge of a table or counter. This appliance is not to be used by persons (including children) with reduced physical, sensory or mental capabilities, or lack of experience and knowledge unless they have been given supervision or instruction.
- Children being supervised are not to play with the appliance.
- Bread may burn. Therefore toasters must not be used near or below curtains or other combustible walls and materials. Failure to maintain safe operating distances may cause discoloration or combustion.

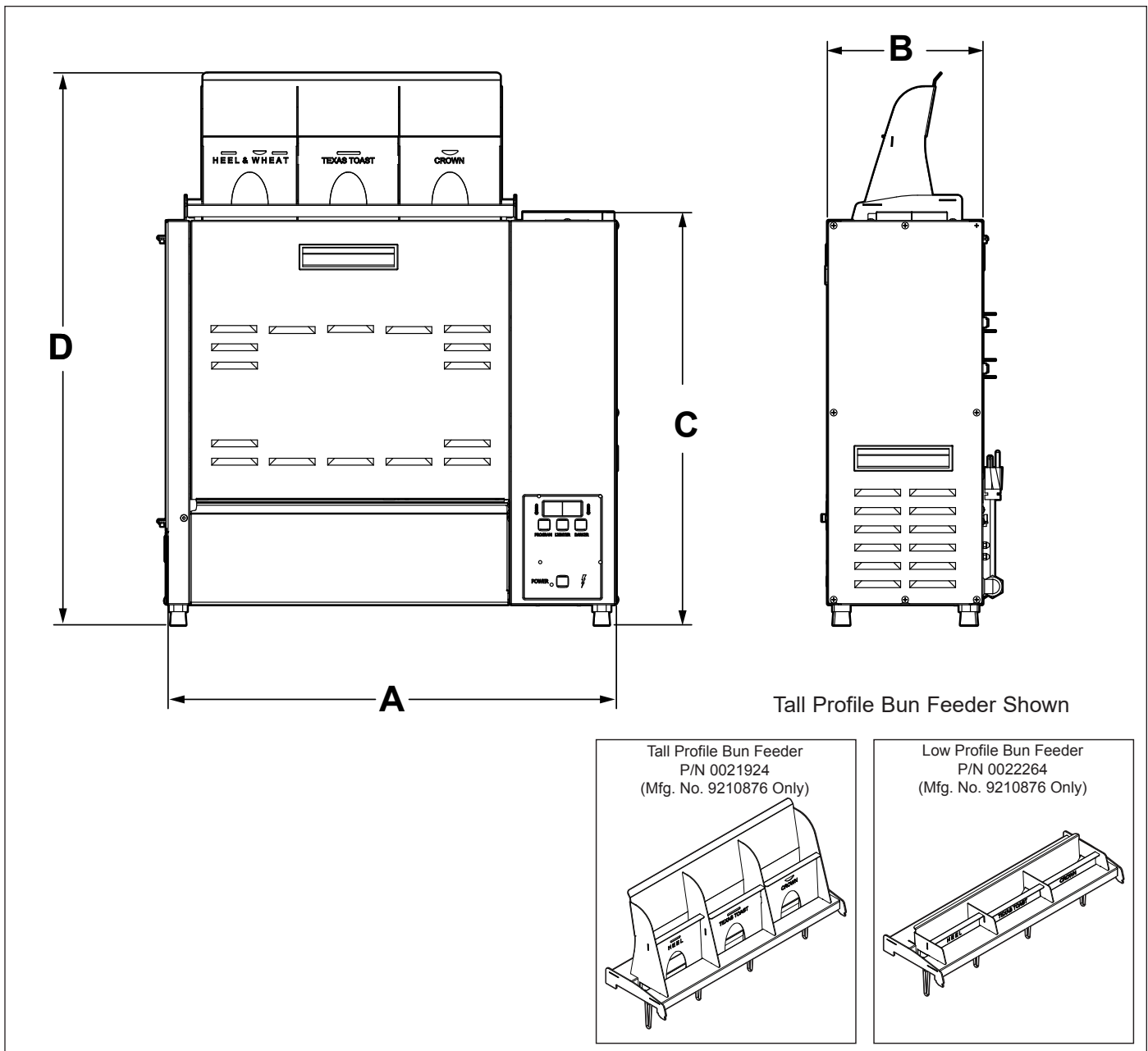
Maintenance

- Do not use abrasive materials; they can damage the unit's stainless steel finish.
- Do not use corrosive chemicals in this equipment.
- Chlorides or phosphates in cleaning agents (e.g., bleach, sanitizers, degreasers, and detergents) can permanently damage stainless steel equipment. The damage is usually in the form of discoloration, dulling of the metal surface finish, pits, voids, holes, or cracks. This damage is permanent and is not covered by warranty.
- Always use a soft, damp cloth for cleaning. Rinse with clear water and wipe dry. When required, always rub in the direction of metal polish lines.
- Routine cleaning should be performed daily with soap and water.
- Rub off finger marks and smears using soap and water.
- Do not clean the unit with a water jet or steam cleaner.

Service

- Inspection, testing, and repair of electrical equipment must be performed only by qualified service personnel.
- To avoid possible personal injury and/or damage to the unit, all inspections, tests, and repair of electrical equipment should be performed by qualified personnel ONLY. Contact Antunes Technical Service for adjustment or repair.
- Turn the power off, unplug the power cord, and allow unit to cool to room temperature before performing any service or maintenance.
- If the supply cord is damaged, it must be replaced by the manufacturer, its service agent, or a similarly qualified person in order to avoid an electrical hazard.
- Cleaning and user maintenance shall not be made by children without supervision.

Specifications



Model & Mfg. No.	Width (A)	Depth (B)	Height (C)	Height (D)	Volts	Watts	Hertz	Plug Description
GST-3V 9210876	25" (635 mm)	8.5" (216 mm)	22" (559 mm) (without Bun Feeder)	30" (762 mm) (with tall profile Bun Feeder)	208/240	3300-3840	50/60	NEMA 6-20P 20 Amp, 250 Volt Non-Locking
GST-3V 9210878	25" (635 mm)	8.5" (216 mm)	22" (559 mm) (without Bun Feeder)	24.5" (622 mm) (with low profile Bun Feeder)				

Shipping Weight

GST-3V Series 125 lbs (34 kg)

Installation

1. Remove unit and all packing materials from shipping carton. Included with the unit is:
 - Bun Feeder
 - Owner's Manual

NOTE: If any parts are missing or damaged, contact Antunes Customer Service IMMEDIATELY at +1-877-392-7856 (toll free).

2. Remove all packing materials and protective coverings from the unit.
3. Wipe the entire exterior of the toaster and the accessories mentioned above with a hot damp cloth. Allow to air dry.

NOTE: Do NOT use a dripping wet cloth. Wring out before use.

4. Attach the Bun Chute and Bun Feeder.
5. Place the unit on a sturdy, level table or other work surface.
6. Turn the power switch to off (if it is set to on).
7. Ensure the line voltage corresponds to the stated voltage on the specification label and power cord warning tag.
8. Plug the power cord into the appropriate power outlet. Refer to the specification plate for the proper voltage.

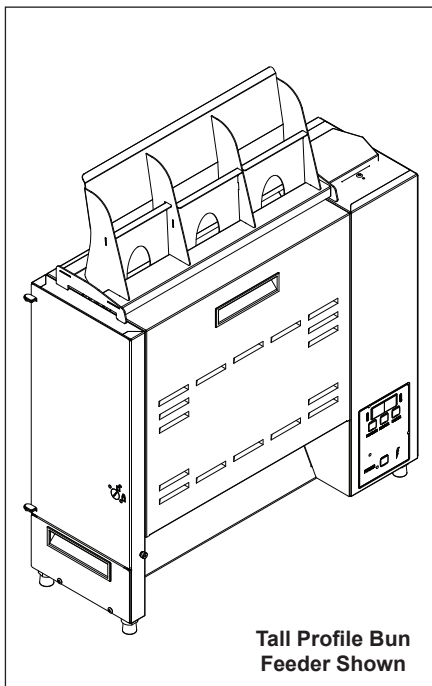


Figure 1. GST-3V

Operation

1. Turn the unit on and allow it to warm up until USE appears in the display.
2. Drop product into the appropriate lane on the Bun Feeder according to Bun Feeder labels. Insert buns with the cut side facing away from the front of the toaster.
3. Finished product drops into the bun landing zone.

Light/Dark Adjustments

The light/dark value can be adjusted when the unit is displaying "USE". To adjust the light/dark value, press the **LIGHTER** or **DARKER** button. The display will change to show the current light/dark value.

NOTE: The default light/dark value is d0.

Press the **LIGHTER** or **DARKER** buttons to change the light/dark value. The adjustment range is L1-L9 and d0-d9. L9 is the lightest, d0 is the middle, and d9 is the darkest setting.

To save the light/dark value, press the **PROGRAM** button or wait 5 seconds until the screen displays "USE".

NOTE: Adjusting the light/dark value does NOT change the temperature. It changes the speed of the conveyors. The light/dark value will reset to the default value of d0 when the unit is turned off.

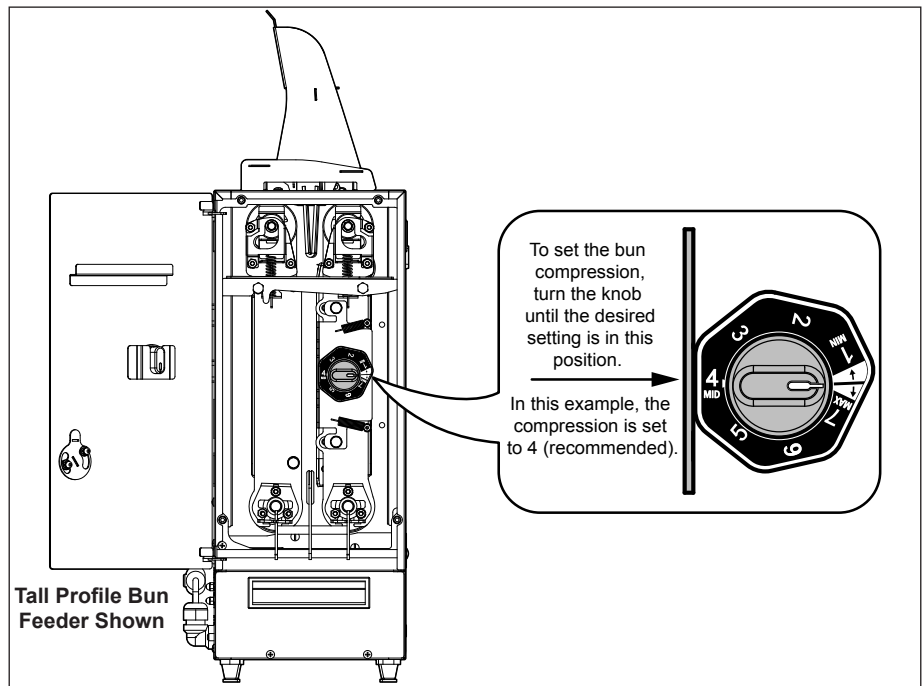


Figure 2. Compression Settings

Bun Compression Setting

To set the bun compression setting:

1. Unlock the non-control side panel and open the door.
2. Place the black knob on the cam as shown in Figure 2.
3. Turn the knob to the desired bun compression setting. The recommended setting is 4. See Figure 2.
4. Remove the black knob and place it back in the holder on the inside of the door.
5. Close and lock the side panel door.

User Mode

User Mode allows an operator to view the toaster settings but does not permit any adjustments.

1. Press and hold the **PROGRAM** button for 5 seconds.
2. After 5 seconds, the display will show the actual temperature of the Rear Platen. Press the **LIGHTER** button to toggle between the setpoint and actual temperature of the Rear Platen Heater.
3. Press the **PROGRAM** button to proceed to the Front Platen Heater menu. The display shows the actual temperature of the Front Platen. Press the **LIGHTER** button to toggle between the setpoint and actual temperature of the Front Platen.
4. Press the **PROGRAM** button to proceed to the Motor Menu. The display shows the actual speed of the motor. Press the **LIGHTER** button to toggle between the setpoint and actual speed of the Motor.
5. Press the **PROGRAM** button to view the most recent error. Pressing the **LIGHTER** button will allow you to scroll through the 10 most recent errors, starting with the most recent error.
6. Press the **PROGRAM** button to proceed to the currently selected voltage.
7. Press the **PROGRAM** button to proceed to the days in operation.
8. Press the **PROGRAM** button to proceed to the currently selected temperature scale.
9. Press the **PROGRAM** button to proceed to the ambient temperature.

NOTE: The unit will exit User Mode after 5 seconds of keypad inactivity.

Manager Mode

Manager Mode allows an operator to view and adjust the following settings:

- Rear Platen temperature
- Front Platen temperature
- Motor speed
- Most recent errors
- Current selection: 208 or 240 volts
- Days in operation (cannot be adjusted)
- Temperature units (Celsius or Fahrenheit)
- Ambient temperature (cannot be adjusted)

1. Turn the unit off.
2. Turn the power on while holding the **PROGRAM** button.
3. The unit will display the Rear Platen Setpoint Temperature. To adjust this value, press the **LIGHTER** or **DARKER** buttons to reach the desired temperature.

NOTE: The recommended temperature setting for the Rear Platen is 545 °F (285 °C).

4. Press the **PROGRAM** button to proceed to the Front Heater Setpoint Temperature. To adjust this value, press the **LIGHTER** or **DARKER** buttons to reach the desired temperature.

NOTE: The recommended temperature setting for the Front Platen is 545° F (285° C).

5. Press the **PROGRAM** button to proceed to the Motor Speed Setpoint Temperature. The recommended setpoint is 43. Adjust the Motor Speed Setpoint by pressing the **LIGHTER** or **DARKER** buttons to reach the desired speed.

NOTE: The Motor Speed is adjustable from 1-100. The recommended setting is 50.

6. Press the **PROGRAM** button to proceed to the Errors section. The unit will display the most recent error code.
7. Press the **PROGRAM** button to proceed to the Voltage setting. Use the **LIGHTER** or **DARKER** buttons set this value to the line voltage for the power outlet used by the unit. This will be either 208 or 240 volts.
8. Press the **PROGRAM** button to proceed to the days in operation. This value cannot be adjusted.

9. Press the **PROGRAM** button to proceed to the Temperature units. Press the **LIGHTER** or **DARKER** buttons to change the temperature units between Fahrenheit and Celsius.
10. Press the **PROGRAM** button to proceed to the Ambient Temperature of the Control Compartment.

NOTE: The Ambient Temperature value can be viewed but NOT adjusted. Temperatures under 150° F (66° C) are acceptable.

11. Press and hold the **PROGRAM** button to save any changes.

NOTE: The unit exits Manager Mode after 30 seconds of keypad inactivity.

Safety Features

Hi-Limit Control

A Hi-Limit Control turns off electrical power to the heaters and control circuits if the unit overheats. To reset the control:

1. Allow 10-15 minutes for the unit to cool.
2. Locate the two Hi-Limit Controls on the rear of the unit. Remove the two black protective caps.
3. Press and release both buttons. Reinstall the protective caps.

NOTE: If the Hi-Limit Controls require continuous resetting, contact your Antunes Technical Service.

Purging Buns from Toaster

If buns get stuck in the toaster, press and hold both the **UP** and **DOWN** arrow buttons to increase the belt speed until the buns are purged from the toaster.

Fault Messages

The unit displays fault messages when there is a problem with the unit.

“Hi” flashes if the Rear Platen Heater temperature is 30° F more than the setpoint or if the Rear Platen Thermocouple is disconnected or open.

“PO” flashes if the incoming power drops below 190 volts. The toaster shuts down.

“StoP” flashes when the motor has stopped for seven continuous seconds.

“SpEd” flashes when the motor speed drops 25% below the Setpoint for 30 continuous seconds.

Error Codes

If any of the following Error Codes appear, turn the power off, allow the unit to cool, and turn the power back on. If the error repeats, contact your Antunes Technical Service for assistance.

NOTE: ERR #1, 2, 3, 5, 6, 7, and 30 to 51: Internal Error. Cycle the power. If error persists, replace the board.

Error	Description
ERR 4	Invalid DIP Switch setting. The only approved setting is (left to right) up-down-up-up.
ERR 8	Motor running when it should be off.
ERR 9	High Internal Temperature. “ERR 9” flashes when the control compartment ambient temperature is more than 150° F (66° C). All heaters shut off. The unit will not restart until the control compartment ambient temperature falls below 140° F (60° C).
ERR 10	Shorted Rear Thermocouple.
ERR 11	Open Rear Thermocouple.
ERR 12	Shorted Front Thermocouple.
ERR 13	Open Front Thermocouple.

Daily Cleaning

Clean the Toaster and Belt Wraps

1. Turn the toaster’s power switch to the off position and it will enter a cool-down mode. The conveyors will continue to rotate during cool-down mode for ease of cleaning and the unit will automatically shut down after 45 minutes

2. Using heat resistance gloves, remove the bun feeder and front and rear conveyor covers.

NOTE: With proper maintenance Belt Wraps can last six months or longer depending upon product and usage.

3. Carefully inspect the front conveyor belt for tears or damaged snaps. (See example images for of damaged belts). Replace any damaged Belt Wraps as needed.
4. If the front belt is in good condition, spray a clean, damp towel with an approved degreaser. Wipe the front belt clean. Rinse the front belt with a separate clean, damp towel sprayed with an approved sanitizer solution. Allow to air dry.

NOTE: The belt rollers will continue turning while in cool-down mode. This allows you to clean the entire belt. Only clean the belt where it is in front of the Backing Plate to avoid causing damage to the belt. Repeat this step several times if there is heavy carbon buildup on the conveyor belt.

5. Carefully inspect the rear conveyor belt for tears or damaged snaps. (See example images of damaged belts). Replace any damaged Belt Wrap as needed.
6. If the rear belt is in good condition, spray a clean, damp sanitized towel with Sink Detergent solution. Wipe the rear belt clean. Rinse the rear belt with a separate clean, damp sanitized towel. Allow to air dry.

NOTE: The belt rollers will continue turning while in cool-down mode. This allows you to the entire belt.

NOTE: Only clean the belt where it is in front of the Backing Plate to avoid causing damage to the belt.

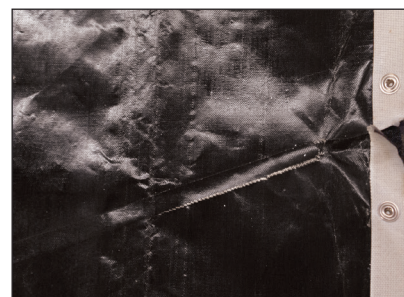
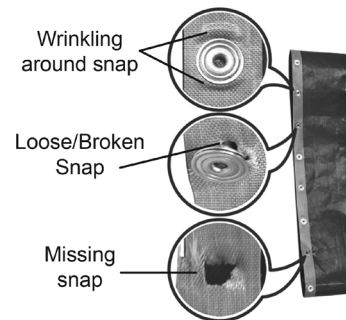
7. Wash, rinse, and sanitize the bun feeder and conveyor covers in a 3 compartment sink. Allow to air dry.
8. Reinstall the clean front and rear conveyor covers.
9. Clean the outside surfaces of the toaster with clean, damp sanitized towel sprayed with an approved stainless steel cleaner. Rinse with a clean, damp sanitized towel and allow to air dry.

Examples of Damaged Belts

If the belts are torn and folded, replace the belts.



If the belts are missing snaps and are damaged, replace the belts.



Quarterly Cleaning

Remove Belt Wraps & Clean Rollers

1. Turn the toaster's power switch to the off position. The toaster enters a cool-down mode and will automatically shut down when complete. Unplug the power cord.

NOTE: Wait for the cool-down period to complete before unplugging the power cord.

2. Remove the bun feeder using heat-resistant gloves.
3. Remove the front and rear conveyor covers by lifting up and away from the unit. Set the compression knob to 7.
4. Unlock the lock on the left side panel with a flathead screwdriver and open the panel. Set the bun compression knob to 7.
5. Push down on the front and rear belt rollers and move them away from the center of the toaster. Use both hands. This removes tension and locks the rollers in place.

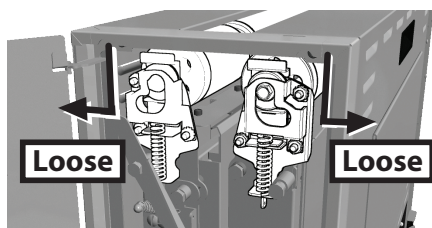


Figure 3. Loosening the conveyor rollers

6. Lift the upper belt frame lock. Then rotate down so it rests on the camshaft of the rear belt roller.
7. Pull down the lower belt frame lock. This provides access to the front and rear belt rollers and belts.
8. Carefully remove both of the belts from the toaster.
9. Wipe all four rollers and backing plates with a clean, damp sanitized towel. Make sure to remove all debris from the rollers and the backing plates so they are as clean as possible.
10. Use a dry cloth towel or nylon-bristled brush to remove all debris from both side compartments, inside of the toaster, and underneath the rollers.

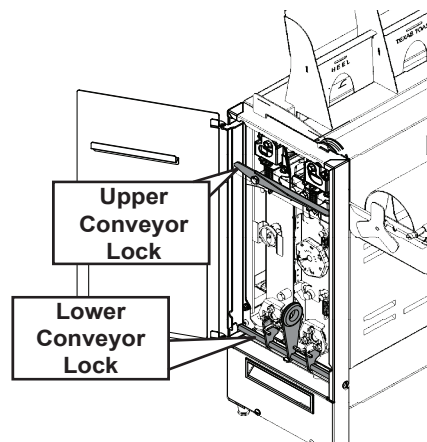


Figure 4. Conveyor locks

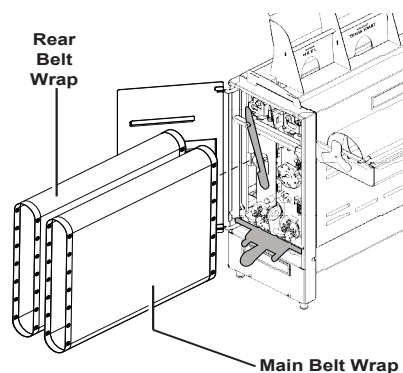


Figure 5. Belt Wraps

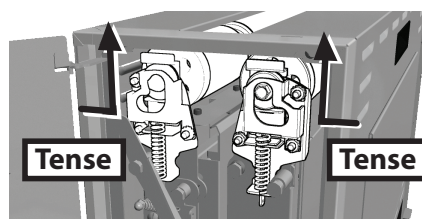


Figure 6. Conveyor rollers under tension

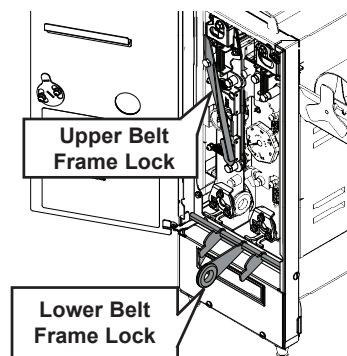


Figure 7. Belt frame locks

Install Belt Wraps

1. If you are installing the existing belt wraps, inspect the belts. Replace belt wraps if worn or damaged. If the belt wraps are in good condition put them back on the toaster.
2. For new or existing belts, wipe both sides of the belts with a clean, damp sanitized towel. Allow to air dry.
3. Slide the belts gently over the appropriate top and bottom roller. Make sure the belt lines up properly on the rollers. The snaps on the belts should face the inside of the roller.
4. Lift up the front and rear belt roller. Use both hands. This will add tension and lock them in place.

5. Lift the lower conveyor lock to lock the rollers into place.

NOTE: Lift up on the camshaft of the rear conveyor roller while lifting the conveyor lock.

6. Lift the upper belt frame lock and lock in place on the conveyor assembly. Set the compression knob to 4.
7. Close the side panel and lock the lock using a flathead screwdriver on the side panel.
8. Re-install the front and rear conveyor covers so they lock into place.
9. Re-install the bun feeder and bun stop onto the top of the unit.
10. Plug in the power cord and turn the unit on.

Annual Cleaning

Clean Fans & Electrical Housings

1. Turn the toaster's power switch to the off position. The toaster enters a cool-down mode and will automatically shut down when complete. Unplug the power cord.
2. Remove the bun feeder and set aside.
3. Remove the top two screws from the control housing cover and slowly lower the cover.

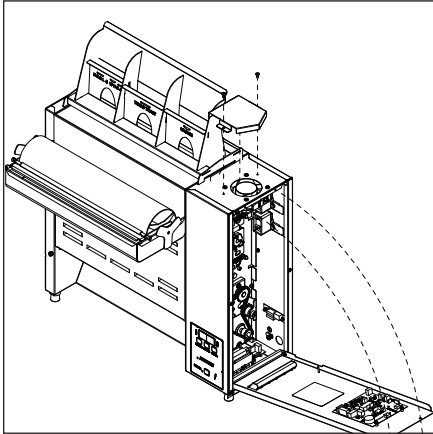


Figure 8. Accessing the top cooling fan

4. Remove any debris or dust from the cooling fan with a small brush. Wipe away any debris with a clean, dry towel. Inspect the electrical compartment for crumbs and debris. Clean out all crumbs and debris using a clean, dry towel or nylon bristled brush. Be careful not to disrupt any of the electrical wiring.
5. Slowly close the control housing cover. Reconnect with the screws.
6. Remove the screws from the bottom plate on the rear of the unit and slowly lower the cover.

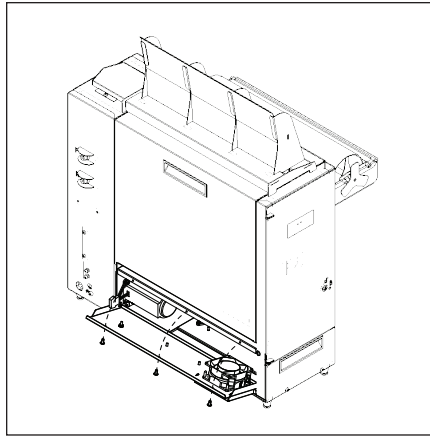


Figure 9. Accessing the rear cooling fan

7. Remove any debris or dust from the cooling fan with a small brush. Wipe away any debris with a clean, dry towel. Inspect the electrical compartment for crumbs and debris. Clean out the crumbs and debris using a clean, dry towel or nylon bristled brush. Be careful not to disrupt any of the electrical wiring.
8. Close the bottom plate and re-install the screws.
9. Reattach the bun feeder. Plug in the power cord, turn the power on, and test the unit before returning it to service.

Troubleshooting

Problem	Possible Cause	Corrective Action
Control Display flashes FPLt continuously. Buns not toasting properly.	Front Platen temperature is below 545 F (285 C).	Allow the unit to warm up for 30 minutes and then recheck. If the Control Display still flashes FPLt , contact your maintenance person or Antunes Technical Service for service.
	Failed front Platen Thermocouple.	Contact your maintenance person or Antunes Technical Service for service.
	Failed Control Board	
Control Display flashes rPLt continuously. Buns not toasting properly.	Rear Platen temperature is below 545° F (285° C).	Allow the unit to warm up for 30 minutes and then recheck. If the Control Display still reads rPLt , contact your maintenance person or Antunes Technical Service for service.
	Failed Rear Platen Thermocouple.	Contact your maintenance person or Antunes Technical Service for service.
	Failed Control Board.	
Control Display flashes Er 9 continuously.	Control Compartment ambient temperature is above 150° F (66° C)	Verify side vents on toaster are unblocked and not near other heating appliances. If problem persists, contact your maintenance person or Antunes Technical Service for service.
	Failed Cooling Fan.	
	Failed Control Board	
Control Display Flashes FSSr continuously. Buns Burn.	Failed Front Platen Solid State Relay.	Contact your maintenance person or Antunes Technical Service for service.
	Failed Control Board.	
	Failed Front Platen Thermocouple.	
Control Display flashes rSSr continuously. Buns Burn.	Failed Rear Platen Solid State Relay.	Contact your maintenance person or Antunes Technical Service for service.
	Failed Control Board.	
	Failed Rear Platen Thermocouple.	
Control Display flashes Er 13 continuously. Buns not toasting properly.	Loose Front Platen Thermocouple connection on Control Board or the Front Platen Thermocouple is open.	Re-secure the Front Platen Thermocouple to the Control Board. If the Control Display still reads Er 13 , check the front Thermocouple for continuity. Contact your maintenance person or Antunes Technical Service for service.
	Failed Control Board.	
Control Display flashes Er 11 continuously. Buns not toasting properly.	Loose Rear Platen Thermocouple connection on Control Board or the Rear Platen thermocouple is open.	Re-secure the Rear Platen Thermocouple connection to the Control Board. If the Control Display still reads Er 11 , check the Rear Thermocouple for continuity. Contact your maintenance person or Antunes Technical Service for service.
	Failed Control Board.	
Control Display flashes Er 12 continuously. Buns not toasting properly.	Shorted Front Platen Thermocouple to ground.	Disconnect and re-secure the Rear Platen Thermocouple connection to the Control Board. If the Control Display still reads Er 12 , check the Rear Thermocouple for continuity. Contact your maintenance person or Antunes Technical Service for service.
	Failed Control Board	
Control Display Flashes Er 10 continuously. Buns not toasting.	Shorted Rear Platen Thermocouple to ground.	Re-secure the Rear Platen Thermocouple connection to the Control Board. If the Control Display still reads Er 10 , check the Rear Thermocouple for continuity. Contact your maintenance person or Antunes Technical Service for service.
	Failed Control Board.	
Control Display flashes StoP .	Mechanical bind in one or both conveyors.	Enter "user mode" to check the motor speed. Check both conveyors for mechanical binds. Test the motor. Replace necessary parts. Contact your maintenance person or Antunes Technical Service for service.
	Worn or damaged Ball Bearings.	
	Drive chain or sprockets damaged.	
	Failed Motor.	
	Failed Control Board.	
Control Display flashes SpEd .	Mechanical bind in one or both conveyors.	Enter "user mode" to check motor speed. Check both conveyors for mechanical binds. Replace necessary parts. Contact your maintenance person or Antunes Technical Service for service.
	Worn or damaged Ball Bearings.	
	Conveyor chains loose or damaged.	
	Drive chain or sprockets damaged.	

Troubleshooting (Continued)

Problem	Possible Cause	Corrective Action
Crowns and/or Heels must be forced into the toaster. Buns sticking and burning.	Silicone Belts not cleaned properly.	Clean Silicone Belts as described in the Maintenance section of this manual.
	Silicone Belts are not tack/sticky to the touch (replace every 2-4 months).	Clean Silicone belts. If the Silicone Belts are too worn, replace them as described in the Maintenance section of this manual.
	Silicone Belts are dirty, worn, or damaged (replace every 2-4 months).	Clean or replace Silicone Belts as described in the Maintenance section of this manual.
	Buns do not meet specifications.	Contact your bun supplier.
Buns not toasting adequately.	Compression Setting is incorrect.	Use the recommended setting of 4.
	One of the Conveyor top shafts is stuck in the lower lock position.	Inspect positions of the shafts as described in the Maintenance section of this manual.
	Either both Upper/Lower Conveyor locks are not properly locked in place.	Inspect the proper position of the locks as described in the Maintenance section of this manual.
	Buns do not meet specifications.	Contact your bun supplier.
	Motor settings are incorrect.	Verify that the motor setting is set to 4000 as described in the Programming section of this Manual.
Compression side door will not close.	Either both Upper/Lower Conveyor Locks are not properly locked in place.	Inspect the proper position of the locks as described in the Maintenance section of this manual.
	The lock on the Compression Side Door is in the locked position when trying to close the door.	Turn the lock to the unlocked position before closing the door.
Fan is making an unusual sound.	Failed Cooling Fan.	Verify vents on toaster are unblocked and not near other heating appliances. Clean fans as described in the Maintenance section of this manual. If problem persists, contact your maintenance person or Antunes Technical Service for service.
	Cooling Fan is dirty and needs to be cleaned.	
Control Display flashes F-HL continuously. Buns are not toasting properly.	Front Hi-Limit Control is tripped.	Allow the unit to cool and reset the Front Hi-Limit Control. If it trips again, contact your maintenance person or Antunes Technical Service for service.
Control Display flashes r-HL continuously. Buns are not toasting properly.	Rear Hi-Limit Control is tripped.	Allow the unit to cool and reset the Rear Hi-Limit Control. If it trips again, contact your maintenance person or Antunes Technical Service for service.
Control Display is blank.	Power Cord is not plugged in.	Plug the Power Cord into the appropriate outlet. Turn the toaster on. If the Control Display is still blank, contact your maintenance person or Antunes Technical Service for service.
	Circuit Breakers turned off or tripped. Damaged electrical outlet, plug, or Power Cord. Power Switch damaged.	Reset Circuit Breakers. If they trip again, check the Power Cord, Plug, and outlet for damage. Contact your maintenance person, Antunes Technical Service, and Electrician for service.
	Faulty Transformer.	Replace Transformer.
Conveyors not turning.	Damaged or missing Roller Tensioner(s)	Adjust or replace the Roller Tensioner(s).
	Conveyor Belt is stretched. Chain is skipping on shaft.	Measure and adjust the Conveyor Belt Chain as described in the Maintenance section of this manual.
	Motor Drive Chain is detached from sprockets.	Reinstall the Drive Chain.
	Drive Chain needs lubrication.	Lubricate Drive Chain with Lubit-8 (P/N 2140152).
	Failed Drive Motor.	Contact your maintenance person or Antunes Technical Service for service.

Replacement Parts

Parts List

(See Exploded Views for more information)

Note	
Use only genuine Antunes replacement parts in this unit. Use of parts other than those supplied by the manufacturer will void the warranty.	

Item No.	Part #	Description	Qty.
1	0021815	Weldment, Back Plate Adj. Platen	1
2	0021837	Weldment Drive Roller Adj. Platen	1
3	0021838	Weldment Drive Roller Main Platen	1
4	0021839	Weldment, Idler Main Platen	1
5	0021840	Weldment, Idler Adjust. Platen	1
6	0021848	Back Conveyor Cover	1
7	0021852	Weldment, Crown Plate	1
8	0021853	Weldment, Fixed Platen Frame	1
9	0021855	Weldment Adj. Platen Frame	1
10	0021884	Weldment, End Housing Rod Support	1
11	0100277	Platen, Club 208V, 90W	1
12	0100281	Adj. Platen Assembly	1
13	0400290	Insulator, Electrical	2
14	0400418	Push In Grommet	1
15	0400427	Insulation, Main Platen	1
16	0503359	Bracket, Relay	1
17	0504320	Spacer 0.781 x 1.125 x 0.06"	10
18	0504321	Spacer 0.503 x 0.69 x 0.06"	2
19	0506144	Plate Tensioner RH	2
20	7001235	Bracket, Bearing LH	2
21	7000234	Bracket, Bearing RH	2
22	0506163	Bracket Tensioner	2
23	0506167	Bracket, Bearing	2
24	0506174	End Cover Bottom	1
25	0506198	Spacer, .625" OD x .218" ID x .075" Thick	2
26	0506291	Bracket, Tensioner End Housing Rear	1
27	0506292	Bracket Tensioner End Housing Front	1
28	0506475	Retainer Idler	1
29	0506477	Fan Bracket	1
30	0506498	Plate, Heel Platen	1
31	0506500	Cover, Adj. Platen	1
32	0506510	Support Bracket, LH	1
33	0506514	Cover Fixed Platen	1
34	0506518	Front Cover Door	1
35	0506524	Insulation Plate	1
36	0506525	Support Bracket, RH	1

Item No.	Part #	Description	Qty.
37	0506526	Housing Door	1
38	0506530	Plate Tensioner, LH	1
39	0506531	Plate Tensioner, RH	1
40	0506676	Motor Plate	1
41	0506691	Cam Bracket, RH	1
42	0506692	Cam Bracket, LH	1
43	0600143	Spring, Compression Setting	2
44	0600156	Spring, Camp Adjustment	2
45	0600157	Spring, Chain Tension	2
46	0600158	Spring, Roller Tensioner	4
47	1001502	Label, Cam LH	1
48	1001504	Label, Cam RH	1
49	1001505	Label, Control	1
50	2120213	Spacer, Frame & Platen, LH	2
51	2120214	Spacer, Adjustable Frame RH	2
52	2120216	Spacer Upper Locking Plate Front	1
53	2120217	Spacer, Upper Locking Plate RH	1
54	2120221	Spacer, 0.69 x 0.503 x 0.359	2
55	2120224	Sleeve Bearing .50" OD x 3.75" LG	2
56	2120233	Spacer .252 ID x .5 OD x .925 LG	4
57	2120236	Spacer .118 THK. .204 IT X .625 OD	2
58	2120237	Spacer .185 THK .204 ID X .625 OD	2
59	2150294	Chain, Drive	1
60	2150312	Sprocket, 25B14 .498" Bore	2
61	2150316	Sprocket, 25B12 3/8" Bore	1
62	2150340	Cam Shaft	1
63	2150347	Cam	2
64	3250160	Spacer .17ID x .43 OD x .03 THK	3
65	4051018	Thermocouple Type K Open end 80" LG	1
66	7000500	Motor, 230 V	1
68	7000777	Bearing, Single Groove SS	8
69	7000810	Thermocouple Type K Open end 80" LG	1
70	7000872	Flanged Bearing	2
71	7000928	1/3 Belt, Crown	-
72	7000929	Full Belt, Main Belt	-
73	7000930	2/3 Belt, Heel/Club	-
74	7001931	Kit, Belts	
75	7000965	Assy., PCB, GST-3V	1
76	7001017	Contact, 2 Pol N.O.	1
77	7001120	Bun Feeder - Low Profile (Mg. No. 9210878 Only)	1
78	7001143	Relay Random Phase Solid State -50A	2
79	7001144	Thermostat Hi-Limit 700° F	2
80	7001145	Transformer, 240 VAC / 12 VAC	1

Replacement Parts

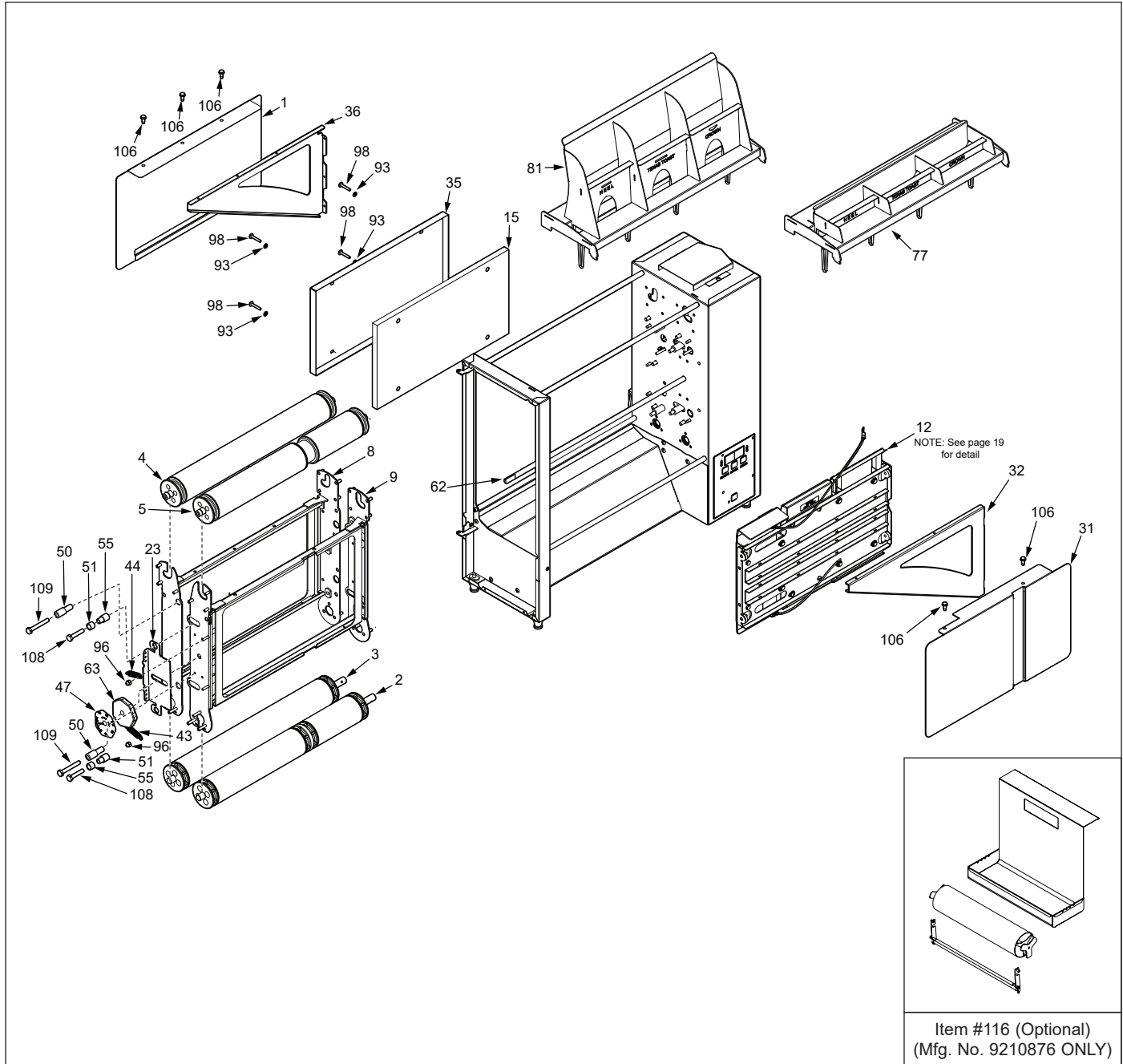
Parts List Continued

Item No.	Part #	Description	Qty.
81	7001289	Bun Feeder - Tall Profile (Mfg. No. 9210876 Only)	1
82	7001354	Front Door Cover Assy Kit	1
83	7001440	Fan, Axial - 203V	1
84	7001524	Bracket, Chain Tensioner	1
85	7001528	Varistor Board	1
86	7001609	Terminal Block	1
87	7001611	Handle, Pocket Pull Snap In	4
88	7001651	Sprocket, 215B18., 1/2" Bore	2
89	05P6083	Spacer .075 THK .203 ID x .312 OD	8
90	300P123*	Ring, Retaining External	1
91	304P105*	Nut, hex 'KEPS' #4-40	1
92	306P130*	Nut, hex 'KEPS' #6-32 Small Pattern	1
93	308P102*	Washer, Int. Tooth #8	1
94	308P115*	Screw, Mach. #8-32 x .318"	1
95	308P143*	Nut, hex 'KEPS' 8-32	1
96	308P145*	Nut Hex Acorn #08-32 Low Crown	1
97	308P157*	Screw, Tap 8-32 x 3/8" LG	1
98	308P164*	Scr. Mach #8-32 x 1" LG SL-TRSHT S/S	1
99	308P193*	Screw, Mach. #8-32 x 1/14" SLTFLTHD	1
100	310P110*	Screw, Mach #10-32 x 1/2"	1
101	310P146	Insulation, Fiber Glass, Club Platen	1
102	310P146*	Nut, Hex 'KEPS' #10-32	1
103	310P187*	Screw, Set #10-32 x 3/8 Hex Socket Cone	2
104	310P188*	Socket Head Cap Screw	1
105	310P213*	Screw, PHPNHD #10-16 x 3/14"	1
106	310P214*	Screw, Hex #10-32 x 1/2"	1
107	325P176*	Screw, Flange Hex Head Cap	1
108	325P193*	Screw, Hex Head, #1/4-20x1.375", SS	1
109	325P194*	Screw, Hex Head #1/4 - 20 x 2.00" SS	1
110	331P101*	Nut, Hex 5/16 - 18	1
111	331P103*	Shoulder Bolt 3/8 x 1"	1
112	331P106*	Lock Washer	1
113	310P140*	Washer Flat #10	10
114	310P123*	SCR,MACH #10-24 X 1/2	4
115	310P102*	Washer, Lock #10	8
116	7002465	Butter Tray Kit (Optional) (Mfg. No. 9210876 Only)	1
117	0508465	Fan Bracket	1

*Available in packages of ten (10).

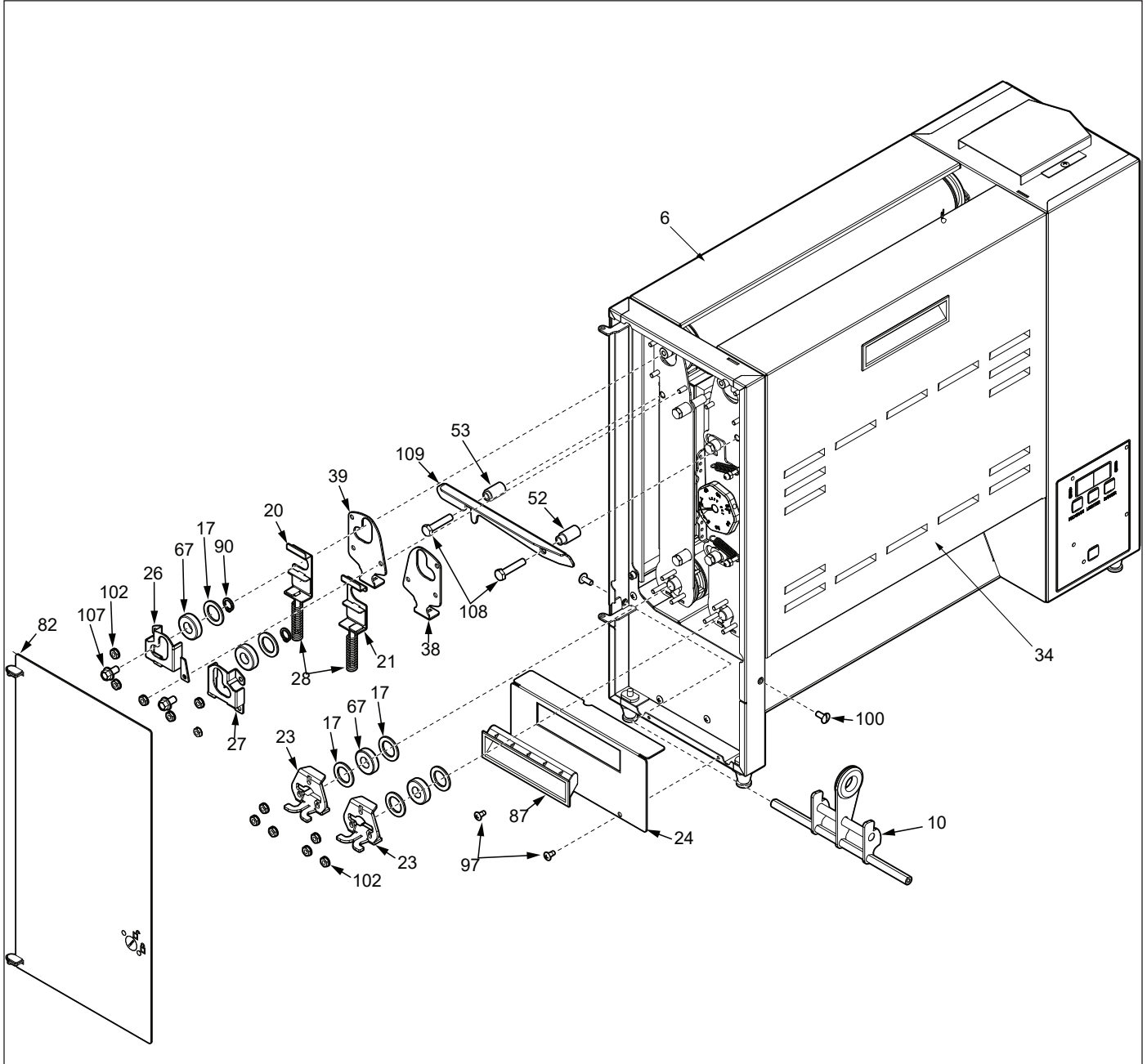
Replacement Parts

Exploded Diagram 1



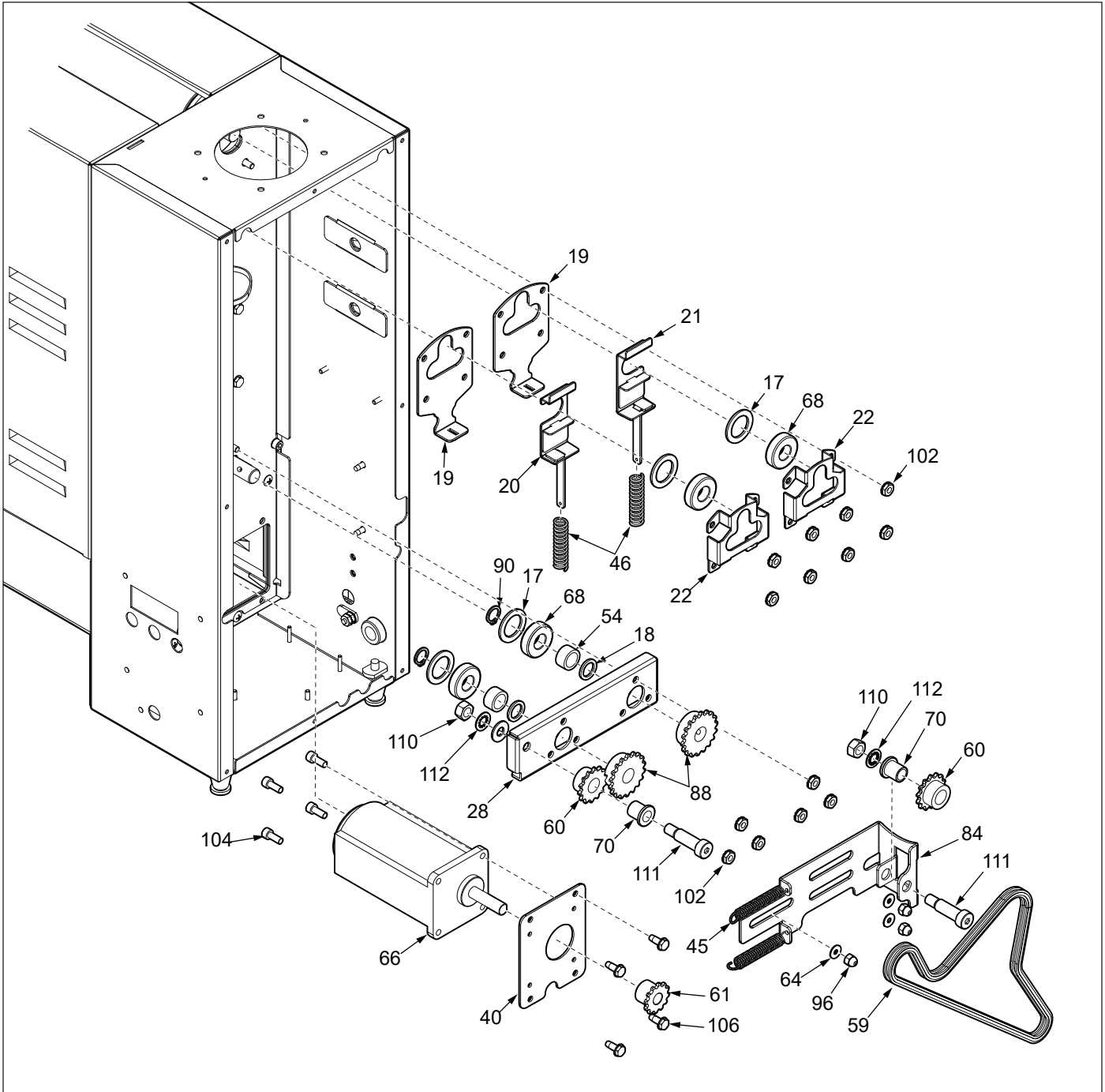
Replacement Parts

Exploded Diagram 2



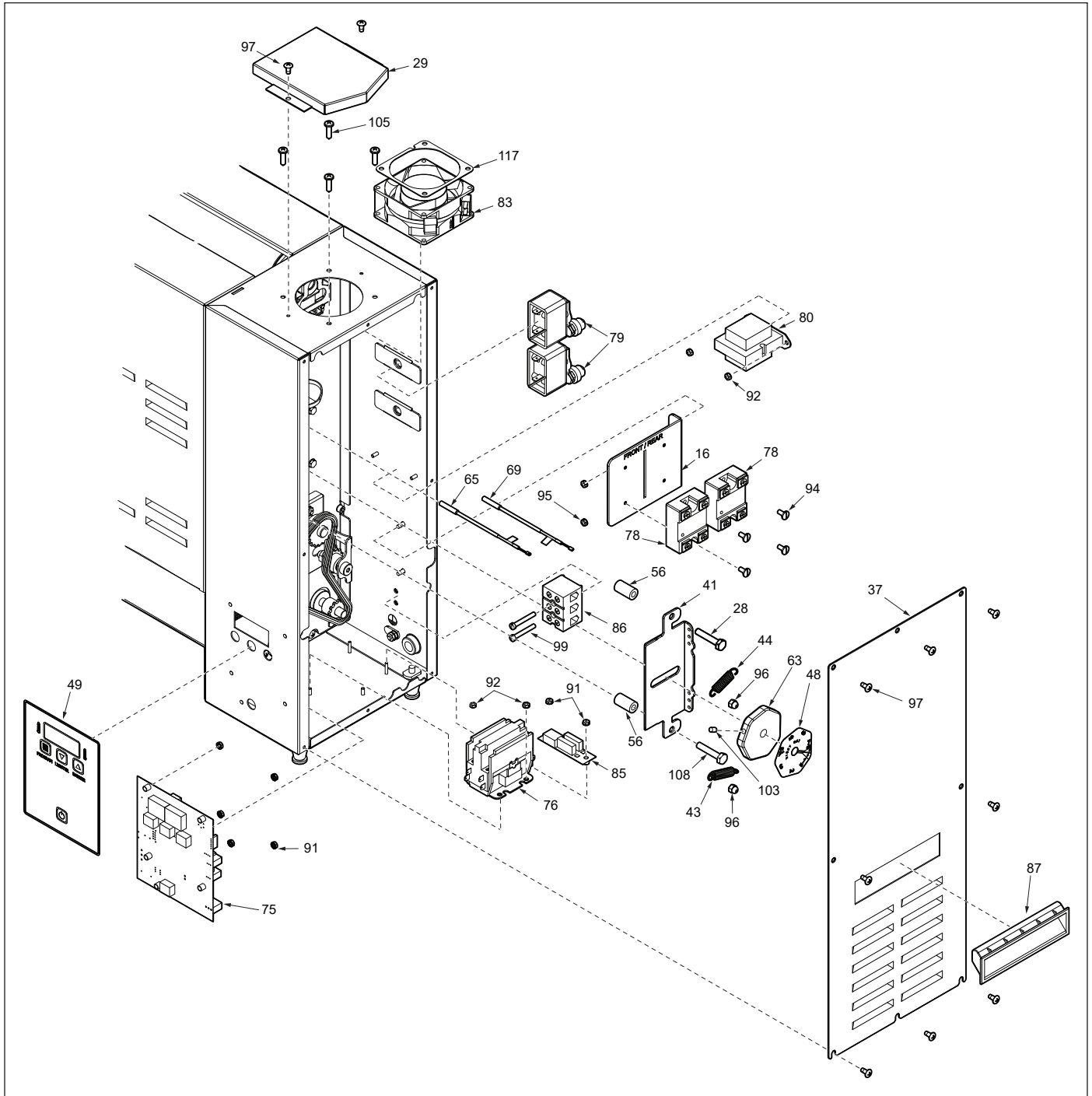
Replacement Parts

Exploded Diagram 3



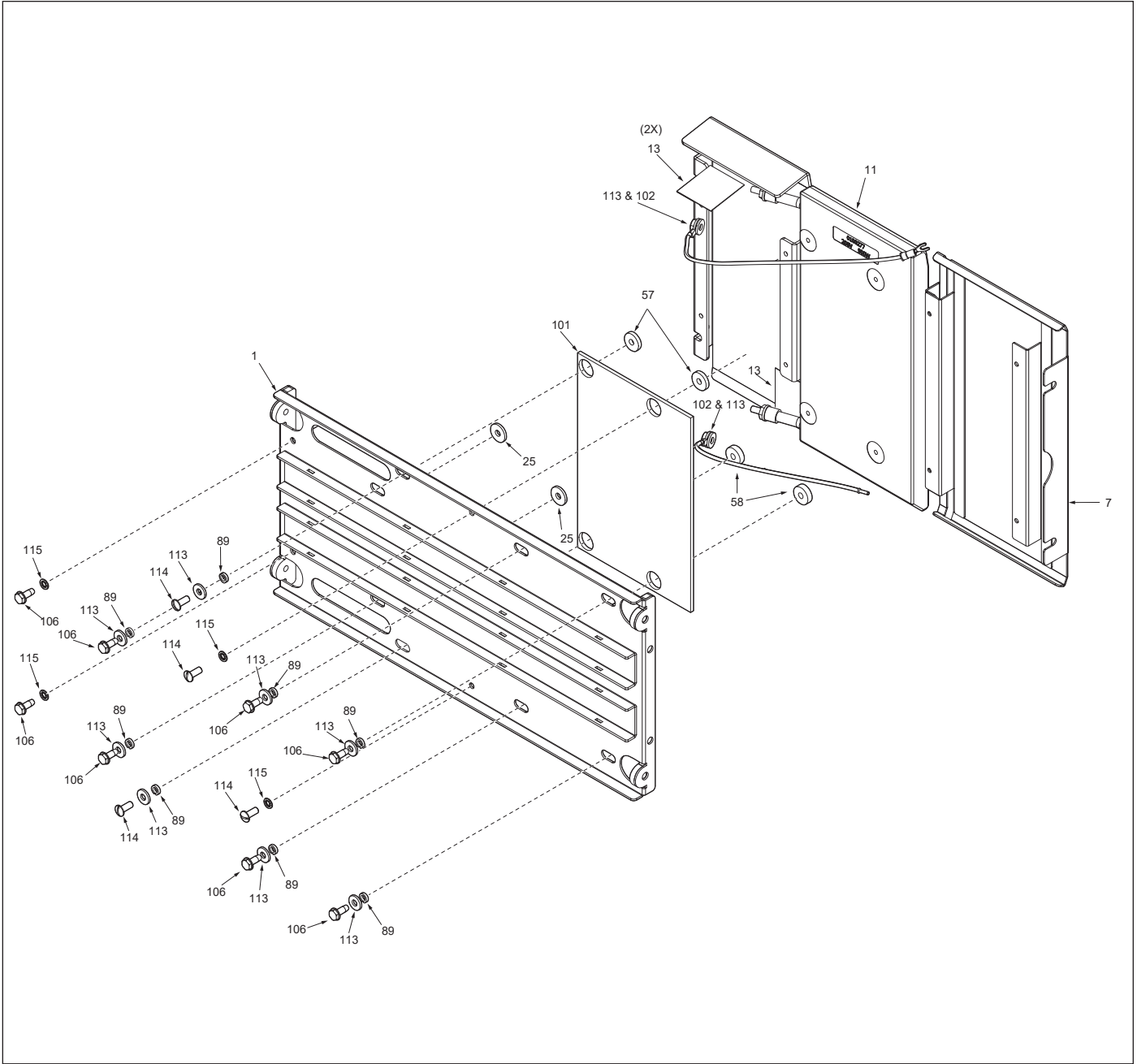
Replacement Parts

Exploded Diagram 4

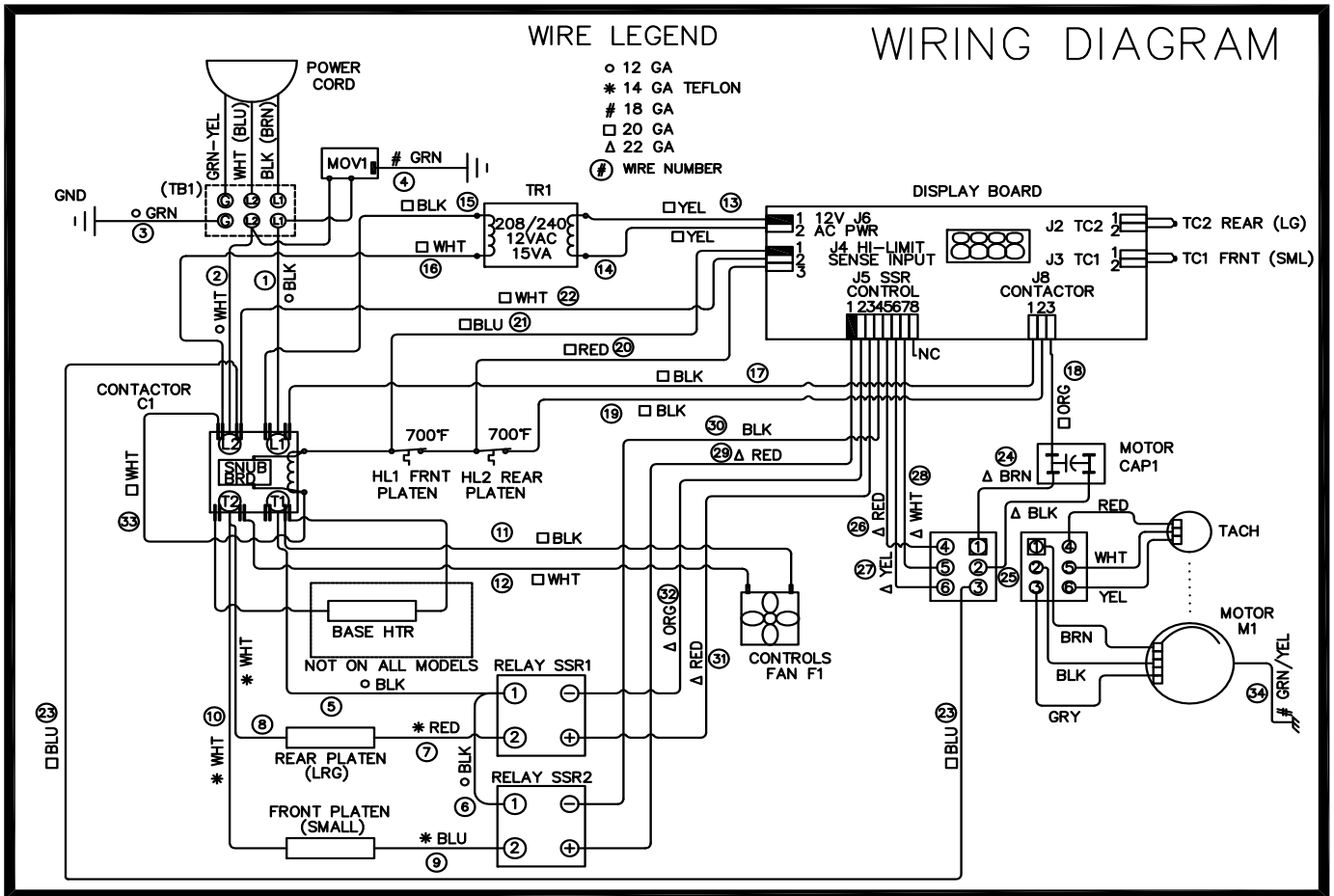


Replacement Parts

Exploded Diagram 5



Wiring Diagram



Limited Warranty

Equipment manufactured by Antunes has been constructed of the finest materials available and manufactured to high quality standards. These units are warranted to be free from electrical and mechanical defects for a period of one (1) year from date of purchase under normal use and service, and when installed in accordance with manufacturer's recommendations. To insure continued operation of the units, follow the maintenance procedures outlined in the Owner's Manual. During the first 12 months, electromechanical parts, non-overtime labor, and travel expenses up to 2 hours (100 miles/160 km), round trip from the nearest Authorized Service Center are covered.

1. This warranty does not cover cost of installation, defects caused by improper storage or handling prior to placing of the Equipment. This warranty does not cover overtime charges or work done by unauthorized service agencies or personnel. This warranty does not cover normal maintenance, calibration, or regular adjustments as specified in operating and maintenance instructions of this manual, and/or labor involved in moving adjacent objects to gain access to the equipment. This warranty does not cover consumable/wear items. This warranty does not cover damage to the Load Cell or Load Cell Assembly due to abuse, misuse, dropping of unit/shock loads or exceeding maximum weight capacity (4 lbs). This warranty does not cover water contamination problems such as foreign material in water lines or inside solenoid valves. It does not cover water pressure problems or failures resulting from improper/incorrect voltage supply. This warranty does not cover Travel Time & Mileage in excess of 2 hours (100 miles/160 km) round trip from the nearest Antunes Technical Service.
2. Antunes reserves the right to make changes in design or add any improvements on any product. The right is always reserved to modify equipment because of factors beyond our control and government regulations. Changes to update equipment do not constitute a warranty charge.
3. If shipment is damaged in transit, the purchaser should make a claim directly upon the carrier. Careful inspection should be made of the shipment as soon as it arrives and visible damage should be noted upon the carrier's receipt. Damage should be reported to the carrier. This damage is not covered under this warranty.
4. Warranty charges do not include freight or foreign, excise, municipal or other sales or use taxes. All such freight and taxes are the responsibility of the purchaser.
5. WARRANTY IS EXCLUSIVE AND IS IN LIEU OF ALL OTHER WARRANTIES, EXPRESSED OR IMPLIED, INCLUDING ANY IMPLIED WARRANTY OR MERCHANTABILITY OR FITNESS FOR A PARTICULAR PURPOSE, EACH OF WHICH IS HEREBY EXPRESSLY DISCLAIMED. THE REMEDIES DESCRIBED ABOVE ARE EXCLUSIVE AND IN NO EVENT SHALL ANTUNES BE LIABLE FOR SPECIAL CONSEQUENTIAL OR INCIDENTAL DAMAGES FOR THE BREACH OR DELAY IN PERFORMANCE OF THIS WARRANTY.

The warranty does not extend to:

- Damages caused in shipment or damage as result of improper use.
- Installation of electrical service.
- Installation, calibration, or adjustment.
- Normal maintenance outlined in this manual.
- Malfunction resulting from improper service or maintenance.
- Damage caused by improper installation, abuse, or careless handling.
- Damage from moisture getting into electrical components.
- Damage from tampering with, removal of, or changing any preset control or safety device.
- Damage caused by accessories unapproved by Antunes.



Corporate Headquarters
Carol Stream, IL, USA
Phone: +1.630.784.1000
Toll Free: +1.800.253.2991
Fax: + 1.(630).784-1650

China Facility
Suzhou, China
Phone: +84.512.6841.3637
Fax: +86.512.6841.3907

India Facility
Chennai, India
Phone: +91.44.25532212
Fax: +91.44.25532415