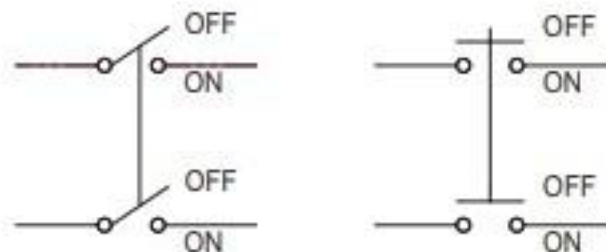


**WIRING SCHEMATIC**  
 — FACTORY WIRED  
 - - - FIELD WIRED

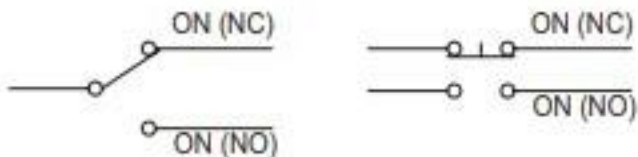
Single Pole

Double Pole

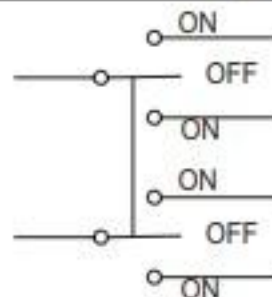
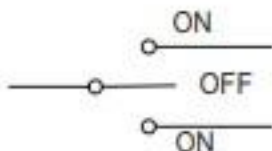
Single Throw



Double Throw



Double Throw Center Off



Series Circuit

Parallel Circuit

Normally Open Contacts



Off if both are not activated  
Off if either are not activated  
On if both are activated

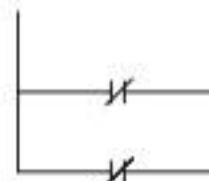


Off if both are not activated  
On if either is activated  
On if both are activated

Normally Closed Contacts



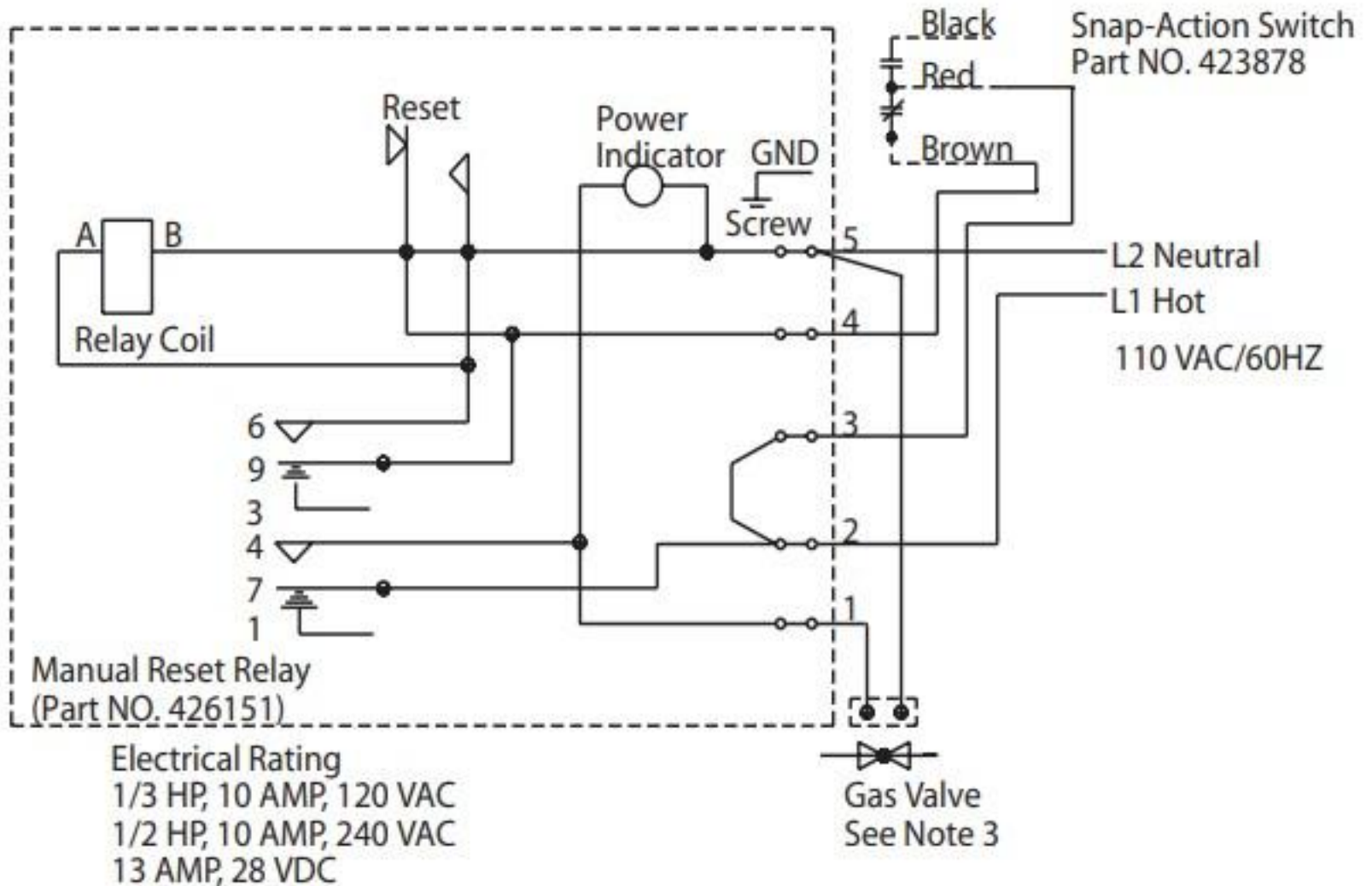
On if both are not activated  
Off if either are not activated  
Off if both are activated

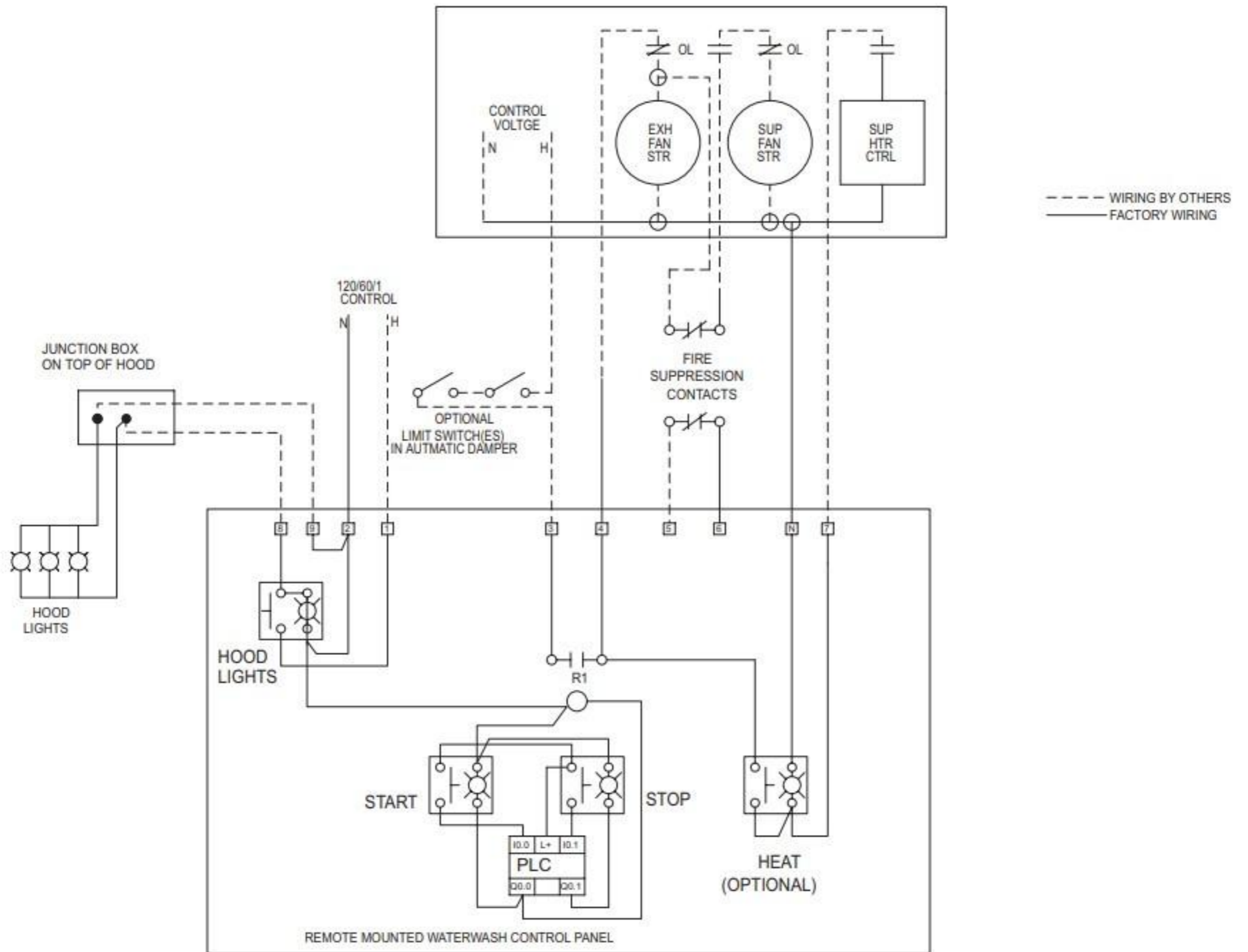


On if either is activated  
Off if either not activated  
Off if both are activated

Option B  
Relay Part NO. 426151

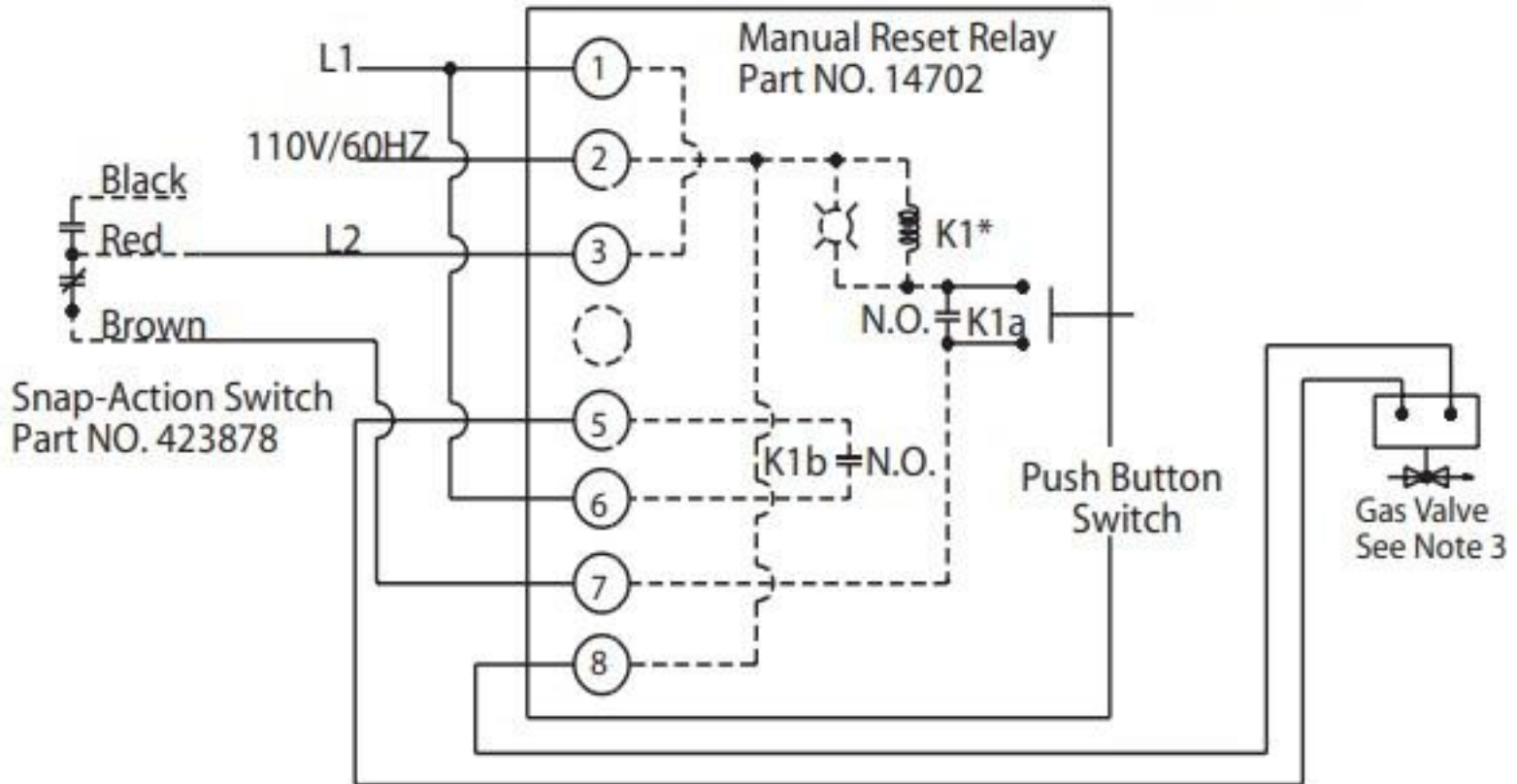
Ansul Snap-Action Switch  
(switch contacts shown with Ansul  
Automan in the cocked position)



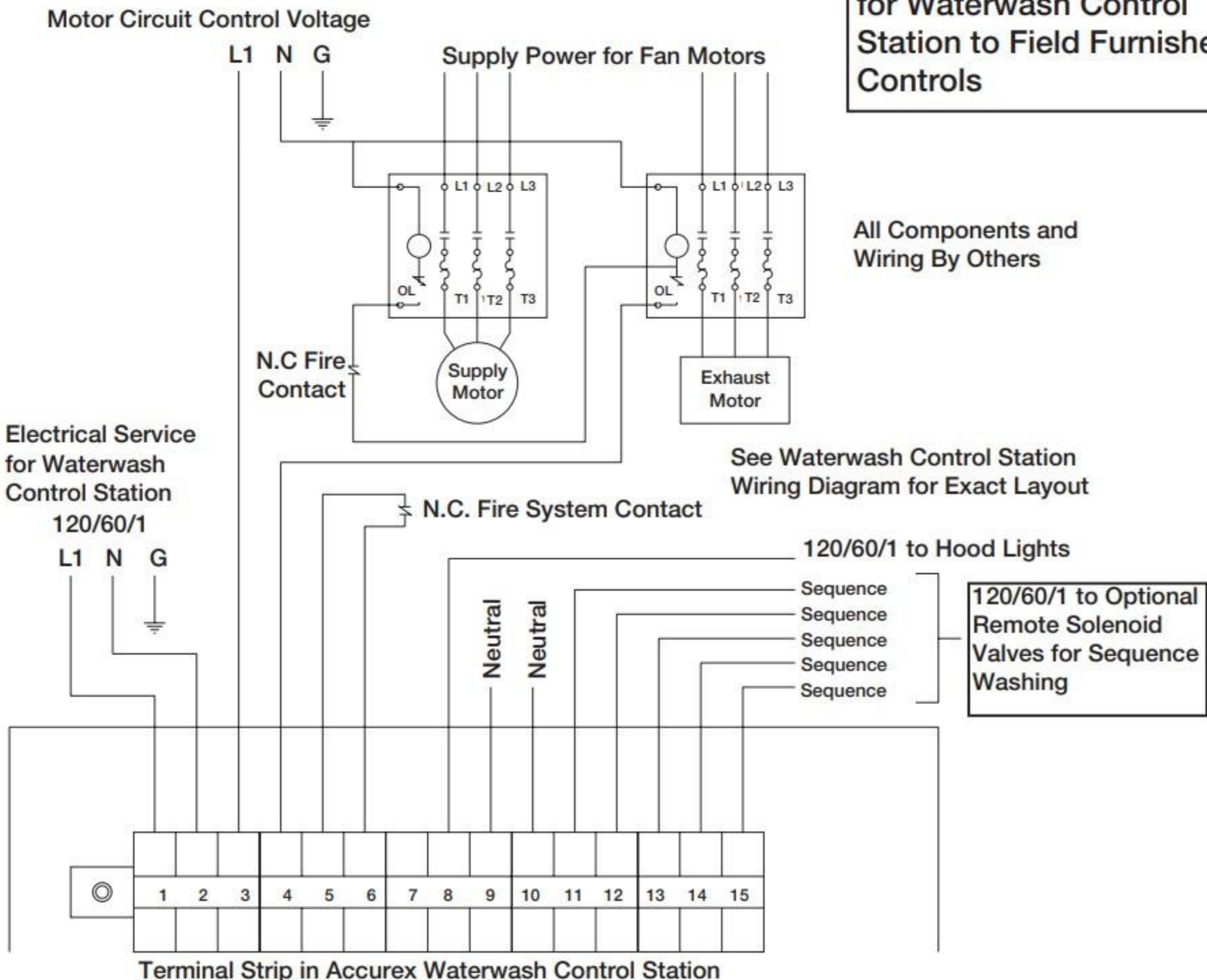


# Option A Relay Part NO. 14702

\* K1a and K1b are N.O. when K1 is de-energized



**Fig. 22 Typical Field Wiring for Waterwash Control Station to Field Furnished Fan Controls**



All Components and Wiring By Others

