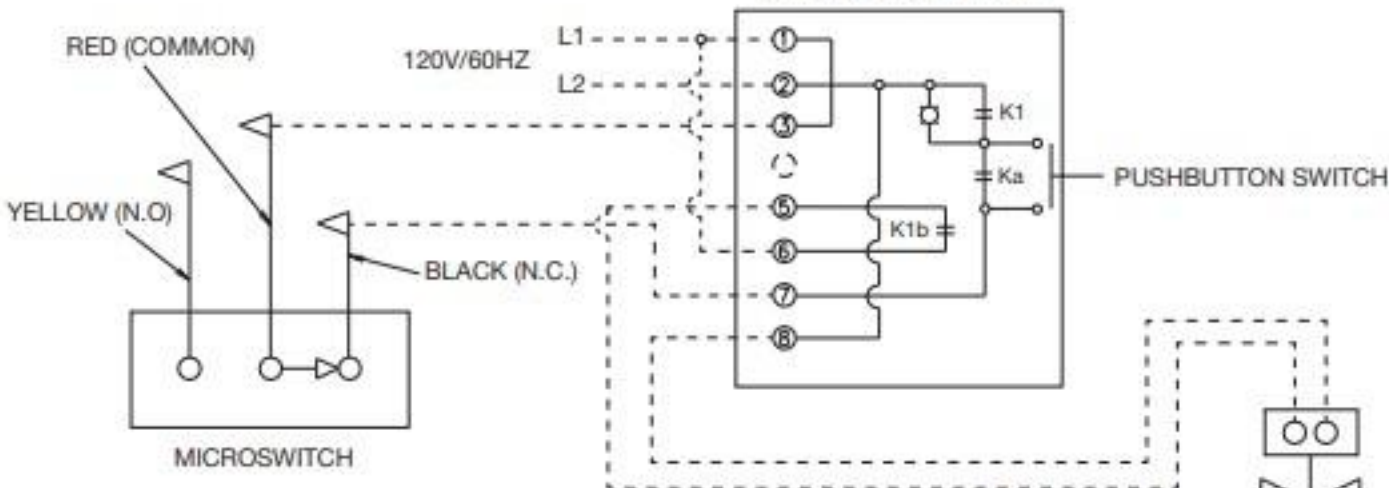


NOTE: DO NOT USE YELLOW WIRE ON MICROSWITCH IN NORMAL INSTALLATION. THE YELLOW WIRE IS TO BE USED ONLY FOR EXTINGUISHER ALARM, LIGHTS, CIRCUITS, ETC.

# MANUAL RESET RELAY



## NOTES:

1. - - - - DENOTES FIELD INSTALLATION
2. ——— DENOTES FACTORY INSTALLATION
3. GAS VALVE: UL LISTED ELECTRICALLY-OPERATED SAFETY VALVE FOR NATURAL OR LP GAS AS NEEDED OF APPROPRIATE PRESSURE AND TEMPERATURE RATING, 110V/60HZ OR AMEREX GAS VALVES, PN 12870, 12871, 12872, 12873, 12874, 12875 AND 12876.
4. K1a AND K1b ARE N.O. WHEN K1 IS DE-ENERGIZED.