



STEAM 'N' HOLD PARTS MANUAL S/N 29030 to 35389



MP4007-1105

TABLE OF CONTENTS

TABLE OF CONTENTS	1
DOCUMENT HISTORY	1
3 PAN BOM	2-4
6 PAN BOM	5-7
3 PAN VOLTAGE-WATTAGE-PHASE	8-9
6 PAN VOLTAGE-WATTAGE-PHASE	10-13
CONTROL PANEL	14-15
3 PAN COMMON COMPONENTS	16-17
6 PAN COMMON COMPONENTS	18-22
LEG CONFIGURATION	23
DOOR ASSEMBLY	24
OUTER DOOR ASSEMBLY	25
INNER DOOR ASSEMBLY	26-28
VALVE BRACKET ASSEMBLY	29
GAST VACUUM PUMP ASSEMBLY	30
COMPONENT BRACKET ASSEMBLY	31-32
HEAT SINK ASSEMBLY	33
PRESSURE SWITCH ASSEMBLY	34
HOSE ASSEMBLY	34
CAST HEATER REPLACEMENT KIT	35
STEAMER DRAIN KIT	36
PART PAGE REFERENCE LIST	37-40
CONTACT INFORMATION	41

DOCUMENT HISTORY

CURRENT REVISION	DATE	PRIOR REVISION	DATE
MP4007-1105	5/14/11	MP4007-0808	8/8/08

Changed cover page
Moved Parts Page Reference List to from page iii-v to page 37-39
Added 3 Pan BOM

AT1A-3471 MODULAR BOM FOR 3 PAN STEAMERS

To build up a complete 3 pan steamer assembly BOM, begin with the desired steamer model number, created from the Steamer Model String Number Configuration (AT11-2611), and follow steps 1 through 5.
Example: S32083D08030200

STEP 1. MODULE, VOLTAGE WATTAGE PHASE

Using model string digits 1 through 10, locate the generic model number in the chart and find the corresponding Module, Voltage Wattage Phase (Digits 2-10).

Example:
Generic Model No. = S32083D08030200
Voltage Wattage Phase Module No. = AT1A-3472-12

DIGITS 1-10 GENERIC MODEL NO.	MODULE, VOLTAGE WATTAGE PHASE	DATA TAG INFORMATION			
		MODEL NO. DIGITS 1-10	VOLTAGE	AMPS	KWATTS
S32081X060XXXX	AT1A-3472-1	S32081X060	208	29	6
S32083X060XXXX	AT1A-3472-11	S32403X080	208/240	17/19	6/8
S32403X080XXXX		S32403X110	208/240	22/26	8/11
S32083X090XXXX	AT1A-3472-12	S32403X120	208/240	25/29	9/12
S32403X120XXXX		S32083X100	208	28	10
S32083X100XXXX	AT1A-3472-5	S32083X160	208	33	12
S32083X120XXXX	AT1A-3472-6	S32301X070	230	32	7
S32301X070XXXX	AT1A-3472-7	S32401X060	240	25	6
S32401X060XXXX	AT1A-3472-8	S32403X060	240	15	6
S32403X060XXXX	AT1A-3472-9	S32401X080	240	33	8
S32401X080XXXX	AT1A-3472-10	S32403X130	240	32	13
S32403X130XXXX	AT1A-3472-18	S35145X080	380/400/415	10/11/11	7/7.4/8
S33805X070XXXX		S34155X110	380/400/415	14/14/15	9/10/11
S34005X070XXXX	AT1A-3472-15	S34155X120	380/400/415	15/16/17	10/11/12
S34155X080XXXX		S34155X130	380/400/415	17/18/19	11/12/13
S34155X090XXXX	AT1A-3472-20	S34155X060	415	8	6
S34155X100XXXX	AT1A-3472-16	S34803X080	440/480	9/10	7/8
S34155X120XXXX		S34803X110	440/480	12/13	9/11
S33805X10XXXX	AT1A-3472-19	S34803X140	440/480	16/17	12/14
S34005X120XXXX	AT1A-3472-21				
S34155X130XXXX	AT1A-3472-22				
S34155X060XXXX	AT1A-3472-23				
S34403X070XXXX					
S34803X080XXXX					
S34403X090XXXX					
S34803X10XXXX					
S34403X120XXXX					

STEP 2. MODULE, CONTROL PANEL

Add the Module, Control Panel derived from model string digits 11 & 12. See AT11-2611 for internal thermostat settings represented by digit 12.

Example:
(S32083D08030200)
30 = AT1A-3078-1

DIGITS 11 & 12	CONTROL PANEL MODULE
30	AT1A-3078-1
31	AT1A-3078-4
32	AT1A-3078-4
33	AT1A-3078-4
34	AT1A-3078-4
35	AT1A-3078-4
36	AT1A-3078-4
40	AT1A-3078-2
41	AT1A-3078-5
42	AT1A-3078-5
43	AT1A-3078-5
44	AT1A-3078-5
45	AT1A-3078-5
46	AT1A-3078-5
50	AT1A-3078-3
51	AT1A-3078-6
52	AT1A-3078-6
53	AT1A-3078-6
54	AT1A-3078-6
55	AT1A-3078-6
56	AT1A-3078-6

STEP 3. MODULE, COMMON COMPONENTS

Add the Module, Common Components derived from model string digit 13 and digit 15.

Example:
(S32083D08030200)
2,0 = AT1A-2650-3

DIGIT 13 & 15	COMMON COMPONENTS MODULE	MODULE DESCRIPTION
(2,4,6 OR 8), 0	AT1A-2650-3	RH CHAMBER
(3,5,7 OR 9), 0	AT1A-2650-4	LH CHAMBER

STEP 4. MODULE, DOOR CONFIGURATION

Add the Module, Door derived from the model string digit 13 and digit 15.

Example:
(S32083D08030200)
2,0 = AT1A-3501-1

DIGIT 13 & 15	MODULE, DOOR CONFIGURATION	MODULE DESCRIPTION
2,0	AT1A-3501-1	RIGHT HAND HINGE
3,0	AT1A-3501-2	LEFT HAND HINGE
4,0	AT1A-3501-3	RIGHT HAND HINGE + HOLD OPEN DOOR
5,0	AT1A-3501-4	LEFT HAND HINGE + HOLD OPEN DOOR
6,0	AT1A-3501-5	RIGHT HAND HINGE + CRACK
7,0	AT1A-3501-6	LEFT HAND HINGE + CRACK OPEN DOOR
8,0	AT1A-3501-7	RIGHT HAND HINGE + HOLD OPEN DOOR + CRACK OPEN DOOR
9,0	AT1A-3501-8	LEFT HAND HINGE + HOLD OPEN DOOR + CRACK OPEN DOOR

NOTES:

1. SHEETS 2 THROUGH 4 SHOW COMPONENT AND MODULE ASSEMBLY ORIENTATIONS.

STEP 5. MODULE, LEG CONFIGURATION

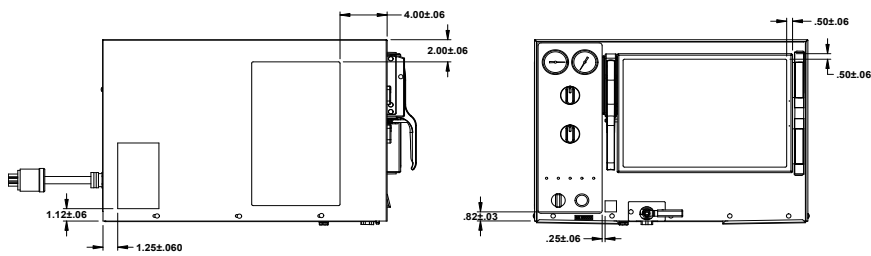
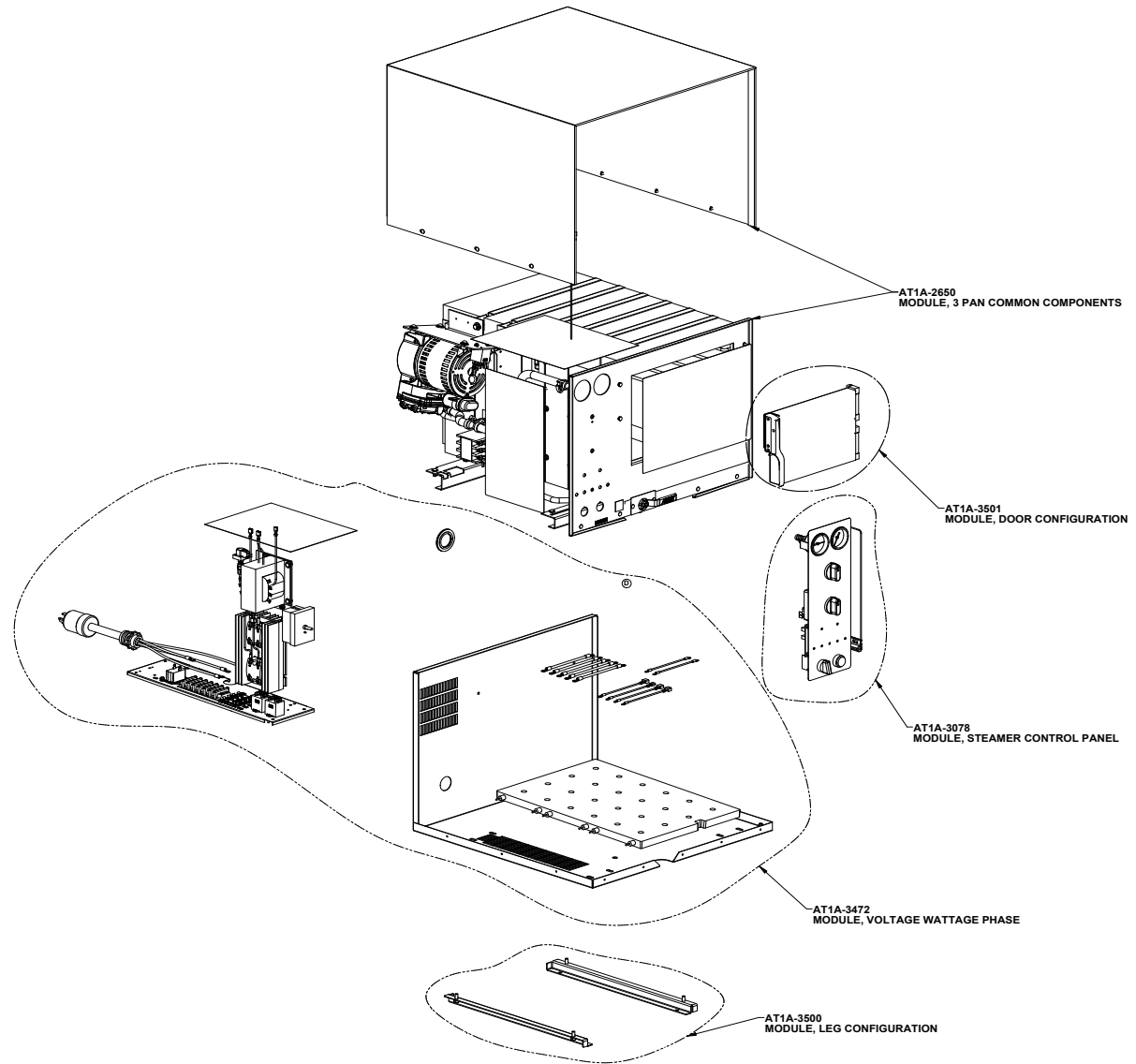
Add the Module, Leg Configuration derived from model string digit 14 and digit 15 for modification of a standard model steamer.

Example:
(S32083D08030200)
0,0 = AT1A-3500-1

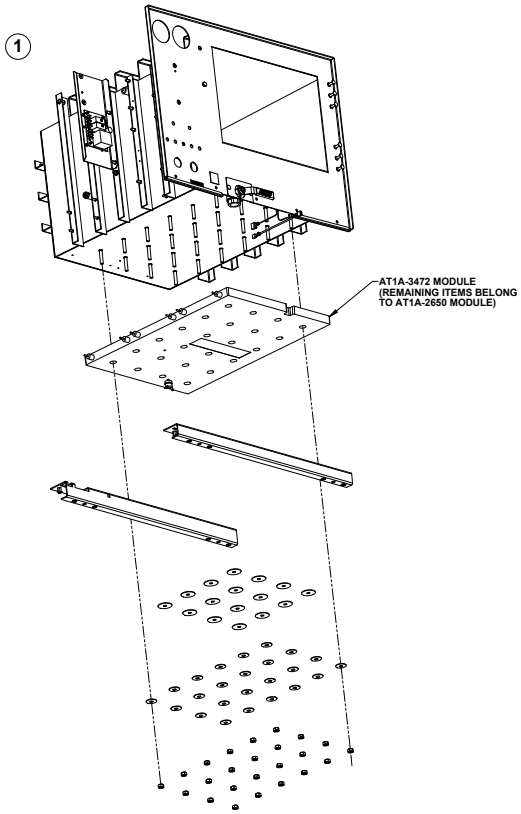
DIGIT 14,15	MODULE CONFIGURATION	MODULE DESCRIPTION
0,0	AT1A-3500-1	DRAIN PAN RAILS
2,0	AT1A-3500-3	4" LEGS + FLANGED FEET
5,0	AT1A-3500-5	4" LEGS + BULLET FEET

EXAMPLE RESULT:

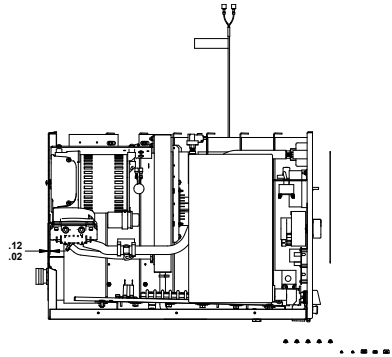
S32083D08030200 is made from parts and modules AT1A-3472-12 + AT1A-3078-1 + AT1A-2650-3 + AT1A-3501-1 + AT1A-3500-1



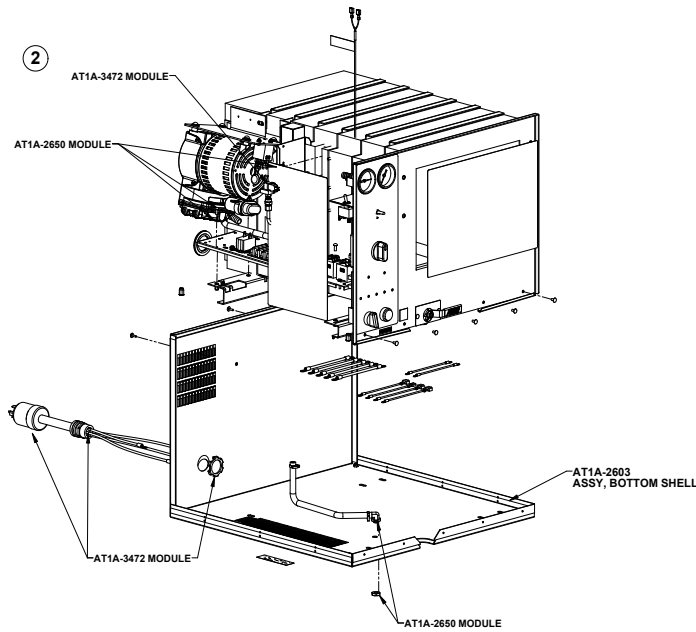
LOCATION FOR OVERLAYS[®]



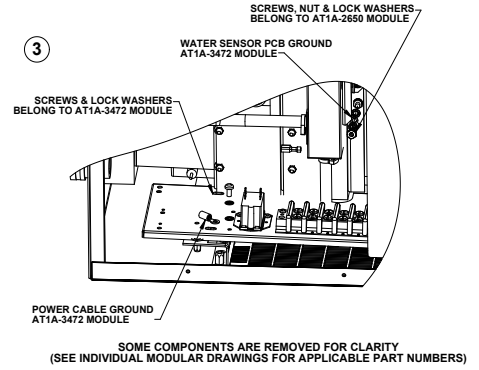
SOME COMPONENTS ARE REMOVED FOR CLARITY
(SEE INDIVIDUAL MODULAR DRAWINGS FOR APPLICABLE PART NUMBERS)



SOME COMPONENTS ARE REMOVED FOR CLARITY
VACUUM PUMP SHOULD BE INSTALLED AND ADJUSTED TO THE DIMENSION SHOWN
BETWEEN THE INSIDE OF THE BOTTOM SHELL AND THE VACUUM PUMP HEAD

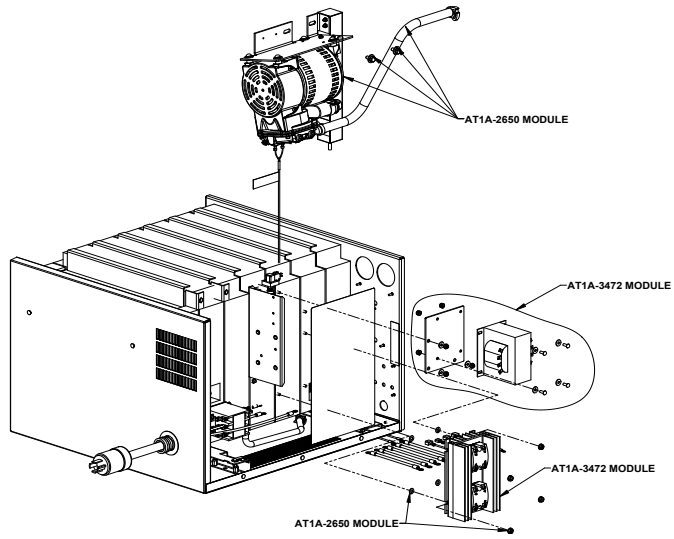


SOME COMPONENTS ARE REMOVED FOR CLARITY
(SEE INDIVIDUAL MODULAR DRAWINGS FOR APPLICABLE PART NUMBERS)



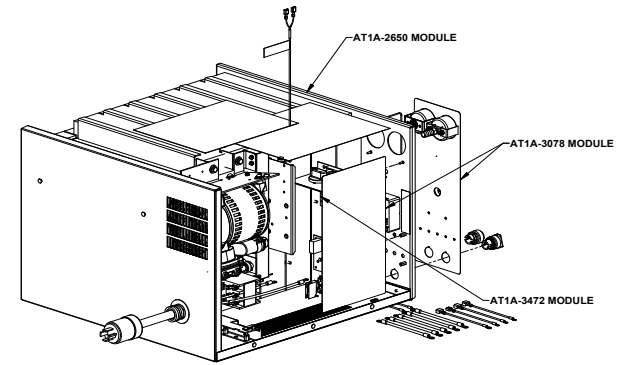
SOME COMPONENTS ARE REMOVED FOR CLARITY
(SEE INDIVIDUAL MODULAR DRAWINGS FOR APPLICABLE PART NUMBERS)

4



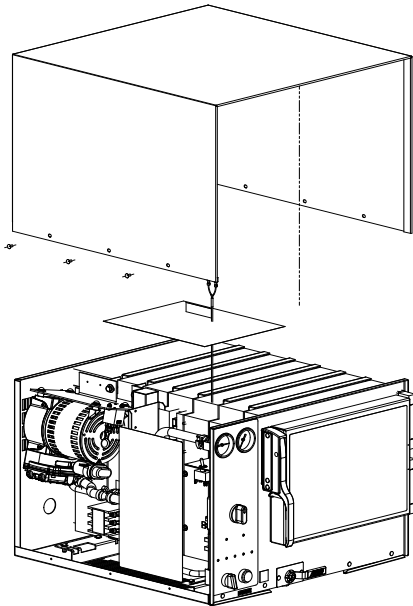
SOME COMPONENTS ARE REMOVED FOR CLARITY
(SEE INDIVIDUAL MODULAR DRAWINGS FOR APPLICABLE PART NUMBERS)

5



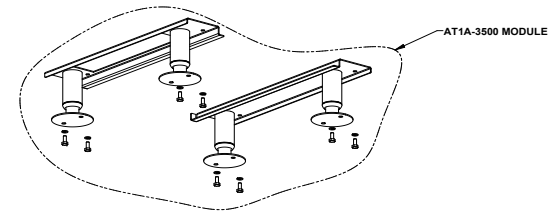
SOME COMPONENTS ARE REMOVED FOR CLARITY
(SEE INDIVIDUAL MODULAR DRAWINGS FOR APPLICABLE PART NUMBERS)

6



SOME COMPONENTS ARE REMOVED FOR CLARITY
(SEE INDIVIDUAL MODULAR DRAWINGS FOR APPLICABLE PART NUMBERS)

7



SOME COMPONENTS ARE REMOVED FOR CLARITY
(SEE INDIVIDUAL MODULAR DRAWINGS FOR APPLICABLE PART NUMBERS)

AT1A-3470 MODULAR BOM FOR 6 PAN STEAMERS

To build up a complete 6 pan steamer assembly BOM, begin with the desired steamer model number, created from the Steamer Model String Number Configuration (AT1T-261), and follow steps 1 through 4.

Example: S62083D08030200

STEP 1. MODULE, VOLTAGE WATTAGE PHASE

Using model string digits 1 through 10, locate the generic model number in the chart and find the corresponding Module, Voltage Wattage Phase.

Example:
Generic Model No. = S62083D080XXXX
Voltage Wattage Phase Module No. = AT1A-3472-37

DIGITS 1-10 GENERIC MODEL NO.	MODULE, VOLTAGE WATTAGE PHASE	DATA TAG INFORMATION			
		MODEL NO. DIGITS 1-10	VOLTAGE	AMPS	KWATTS
S62081X060XXXX	AT1A-3472-25	S62081X060	208	29	6
S62083X060XXXX	AT1A-3472-36	S62403X060	208/240	17/19	6/8
S62403X080XXXX		S62403X110	208/240	22/26	8/11
S62083X080XXXX	AT1A-3472-37	S62403X110	208/240	22/26	8/11
S62403X110XXXX		S62403X120	208/240	25/29	9/12
S62083X090XXXX	AT1A-3472-38	S62403X120	208/240	25/29	9/12
S62403X120XXXX		S62083X100	208	28	10
S62083X100XXXX	AT1A-3472-29	S62083X100	208	33	12
S62083X120XXXX		S62083X120	208	42	15
S62083X150XXXX	AT1A-3472-55	S62083X150	208	42	15
S62083X170XXXX		S62083X170	208	47	17
S62301X070XXXX	AT1A-3472-32	S62301X070	230	32	7
S62401X060XXXX		S62401X060	240	25	6
S62403X060XXXX	AT1A-3472-33	S62403X060	240	15	6
S62401X080XXXX		S62401X080	240	33	8
S62403X130XXXX	AT1A-3472-48	S62403X130	240	32	13
S63805X070XXXX		S65145X080	380/400/415	10/11/11	7/7.4/8
S64005X074XXXX	AT1A-3472-40	S65145X080	380/400/415	10/11/11	7/7.4/8
S64155X080XXXX		S64155X110	380/400/415	14/14/15	9/10/11
S63805X090XXXX	AT1A-3472-41	S64155X110	380/400/415	14/14/15	9/10/11
S64005X100XXXX		S64155X120	380/400/415	15/16/17	10/11/12
S64155X110XXXX	AT1A-3472-45	S64155X120	380/400/415	15/16/17	10/11/12
S64005X110XXXX		S64155X130	380/400/415	17/18/19	11/12/13
S64155X120XXXX	AT1A-3472-53	S64155X130	380/400/415	17/18/19	11/12/13
S64005X120XXXX		S63805X130	380	20	13
S64155X130XXXX	AT1A-3472-43	S63805X130	380	20	13
S63805X130XXXX		S64155X060	415	8	6
S64155X060XXXX	AT1A-3472-44	S64155X060	415	8	6
S64403X070XXXX		S64803X080	440/480	9/10	7/8
S64803X080XXXX	AT1A-3472-46	S64803X080	440/480	9/10	7/8
S64403X090XXXX		S64803X110	440/480	12/13	9/11
S64803X110XXXX	AT1A-3472-47	S64803X110	440/480	12/13	9/11
S64403X120XXXX		S64803X140	440/480	16/17	12/14
S64803X120XXXX	AT1A-3472-52	S64803X140	440/480	16/17	12/14
S64803X140XXXX					

STEP 2. MODULE, CONTROL PANEL

Add the Module, Control Panel derived from model string digits 11 & 12. See AT1T-2611 for internal thermostat settings represented by digit 12.

Example:
(S62083D08030200)
30 = AT1A-3078-7

DIGITS 11 & 12	CONTROL PANEL MODULE
30	AT1A-3078-7
31	AT1A-3078-10
32	AT1A-3078-10
33	AT1A-3078-10
34	AT1A-3078-10
35	AT1A-3078-10
36	AT1A-3078-10
40	AT1A-3078-8
41	AT1A-3078-11
42	AT1A-3078-11
43	AT1A-3078-11
44	AT1A-3078-11
45	AT1A-3078-11
46	AT1A-3078-11
50	AT1A-3078-9
51	AT1A-3078-12
52	AT1A-3078-12
53	AT1A-3078-12
54	AT1A-3078-12
55	AT1A-3078-12
56	AT1A-3078-12

STEP 3. MODULE, COMMON COMPONENTS

Add the Module, Common Components derived from the model string digit 13 and digit 15.

Examples:
(S62083D08030200)
2,0 = AT1A-3377-5

DIGIT 13 & 15	MODULE, COMMON COMPONENTS	MODULE DESCRIPTION
(2,4,6 OR 8),0	AT1A-3377-5	RH CHAMBER
(3,5,7 OR 9),0	AT1A-3377-6	LH CHAMBER
(2,4,6 OR 8),1	AT1A-3377-7	RH CHAMBER + TAMPER-PROOF
(3,5,7 OR 9),1	AT1A-3377-8	LH CHAMBER + TAMPER-PROOF

STEP 4. MODULE, DOOR CONFIGURATION

Add the Module, Door derived from the model string digit 13 and digit 15.

Examples:
(S62083D08030200)
2,0 = AT1A-3501-5

DIGIT 13 & 15	MODULE, DOOR CONFIGURATION	MODULE DESCRIPTION
2,0	AT1A-3501-9	RIGHT HAND HINGE
3,0	AT1A-3501-10	LEFT HAND HINGE
4,0	AT1A-3501-11	RIGHT HAND HINGE + HOLD OPEN DOOR
5,0	AT1A-3501-12	LEFT HAND HINGE + HOLD OPEN DOOR
6,0	AT1A-3501-13	RIGHT HAND HINGE + CRACK
7,0	AT1A-3501-14	LEFT HAND HINGE + CRACK OPEN DOOR
8,0	AT1A-3501-15	RIGHT HAND HINGE + HOLD OPEN DOOR + CRACK OPEN DOOR
9,0	AT1A-3501-16	LEFT HAND HINGE + HOLD OPEN DOOR + CRACK OPEN DOOR
2,1	AT1A-3501-17	RIGHT HAND HINGE TAMPER PROOF
3,1	AT1A-3501-18	LEFT HAND HINGE TAMPER PROOF

NOTES:

1. SHEETS 2 THROUGH SHEET 3 SHOW COMPONENT AND MODULE ASSEMBLY ORIENTATIONS.

STEP 5. MODULE, LEG CONFIGURATION

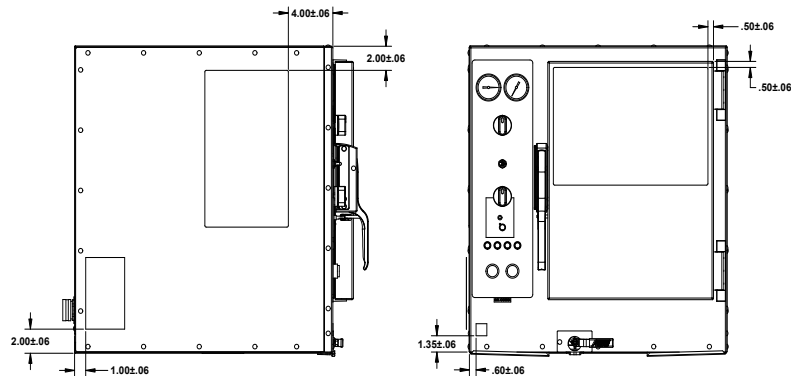
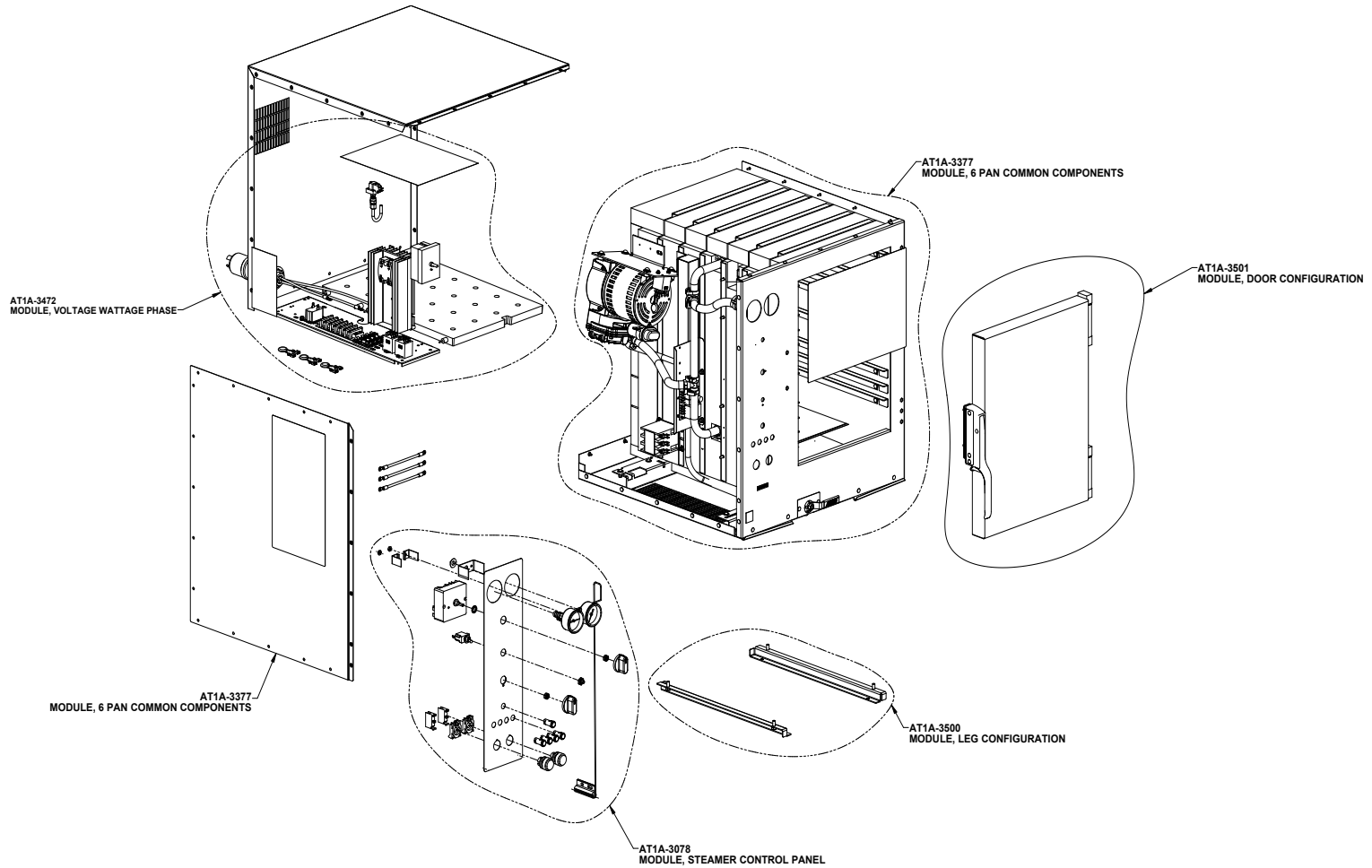
Add the Module, Leg Configuration derived from model string digit 14 and digit 15 for modification of a standard model steamer.

Example:
(S62083D08030200)
0,0 = AT1A-3500-1

DIGIT 14,15	MODULE, CONFIGURATION	MODULE, DESCRIPTION
0,0	AT1A-3500-1	DRAIN PAN RAILS
0,1	AT1A-3500-2	DRAIN PAN RAILS + TAMPER-PROOF SCREWS
2,0	AT1A-3500-3	4" LEGS + FLANGED FEET
2,1	AT1A-3500-4	4" LEGS + FLANGED FEET + TAMPER-PROOF SCREWS
5,0	AT1A-3500-5	4" LEGS + BULLET FEET
5,1	AT1A-3500-6	4" LEGS + BULLET FEET + TAMPER-PROOF SCREWS

EXAMPLE RESULT: ☉

S62083D08030200 is made from parts and modules AT1A-3472-37 + AT1A-3078-7 + AT1A-3377-5 + AT1A-3501-5 + AT1A-3500-1

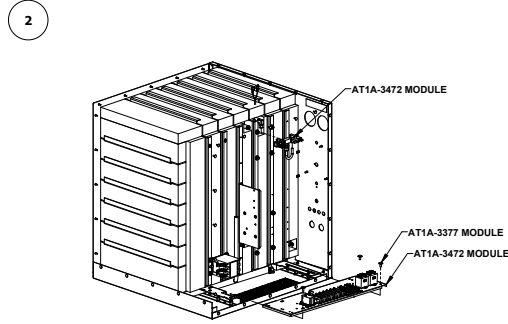
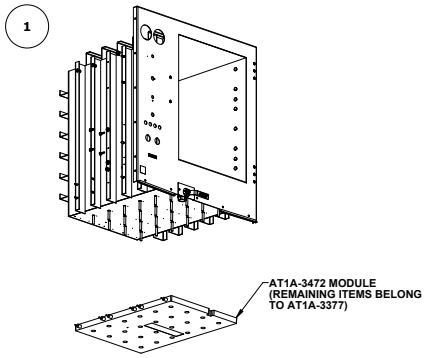


LOCATIO FOR OVERLAYS

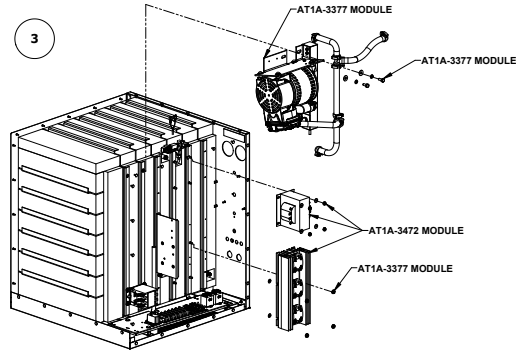


Accutemp Products, Inc.
8415 N. Clinton Park
Fort Wayne, IN 46825

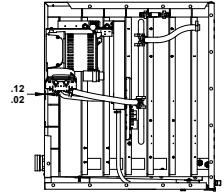
BOM,
6 PAN FINAL
Drawn by: AT1A-3470 Rev
E



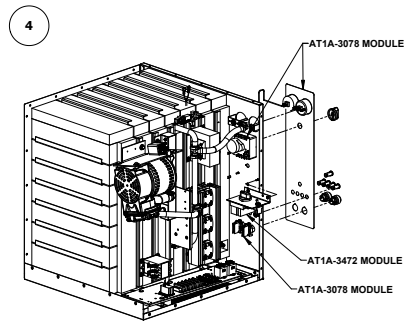
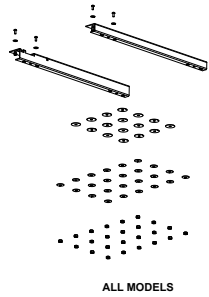
SOME COMPONENTS ARE REMOVED FOR CLARITY
(SEE INDIVIDUAL MODULAR DRAWINGS FOR APPLICABLE PART NUMBERS)



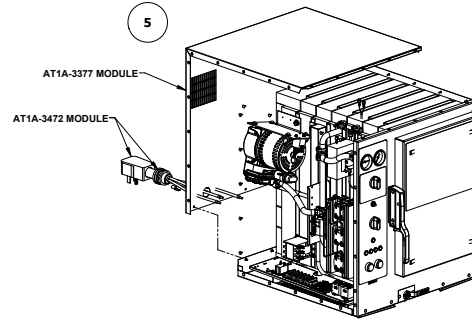
SOME COMPONENTS ARE REMOVED FOR CLARITY
(SEE INDIVIDUAL MODULAR DRAWINGS FOR APPLICABLE PART NUMBERS)



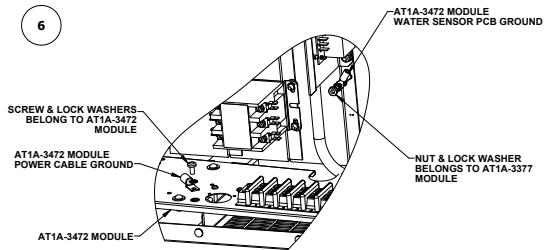
SOME COMPONENTS ARE REMOVED FOR CLARITY
VACUUM PUMP SHOULD BE INSTALLED AND
ADJUSTED TO THE DIMENSION SHOWN BETWEEN THE
INSIDE OF THE EXTERIOR SHELL AND THE VACUUM
PUMP HEAD



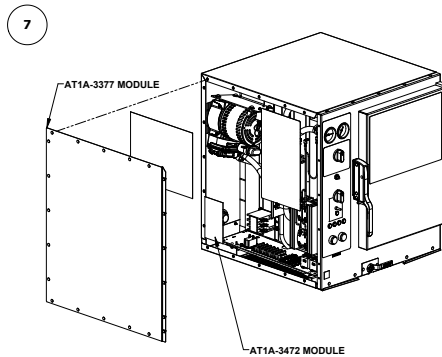
SOME COMPONENTS ARE REMOVED FOR CLARITY
(SEE INDIVIDUAL MODULAR DRAWINGS FOR APPLICABLE PART NUMBERS)



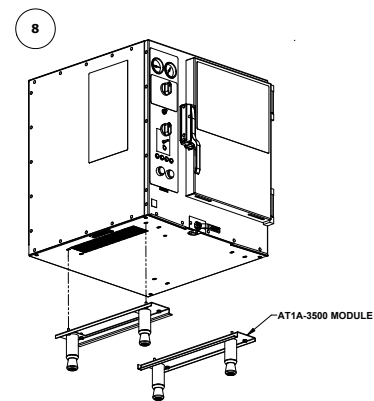
SOME COMPONENTS ARE REMOVED FOR CLARITY
(SEE INDIVIDUAL MODULAR DRAWINGS FOR APPLICABLE PART NUMBERS)



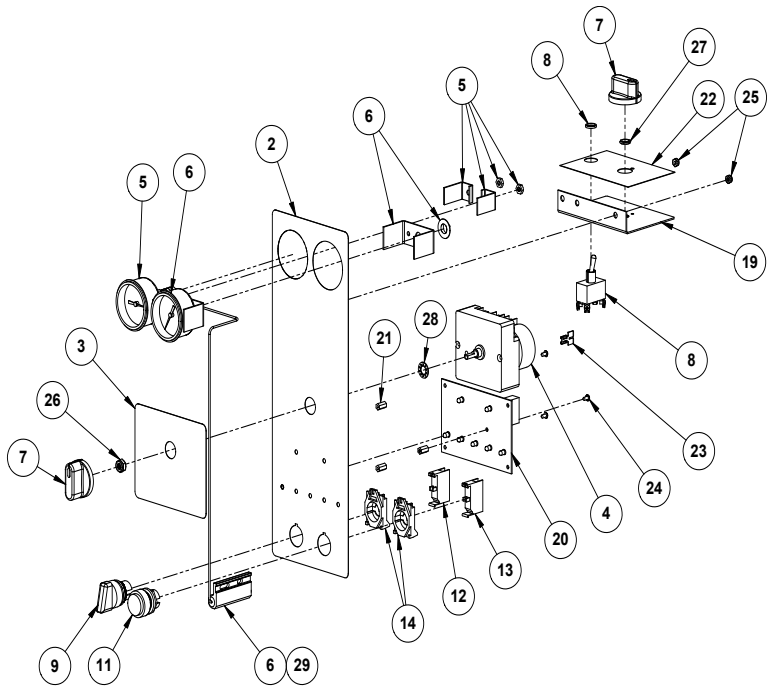
SOME COMPONENTS ARE REMOVED FOR CLARITY
(SEE INDIVIDUAL MODULAR DRAWINGS FOR APPLICABLE PART NUMBERS)



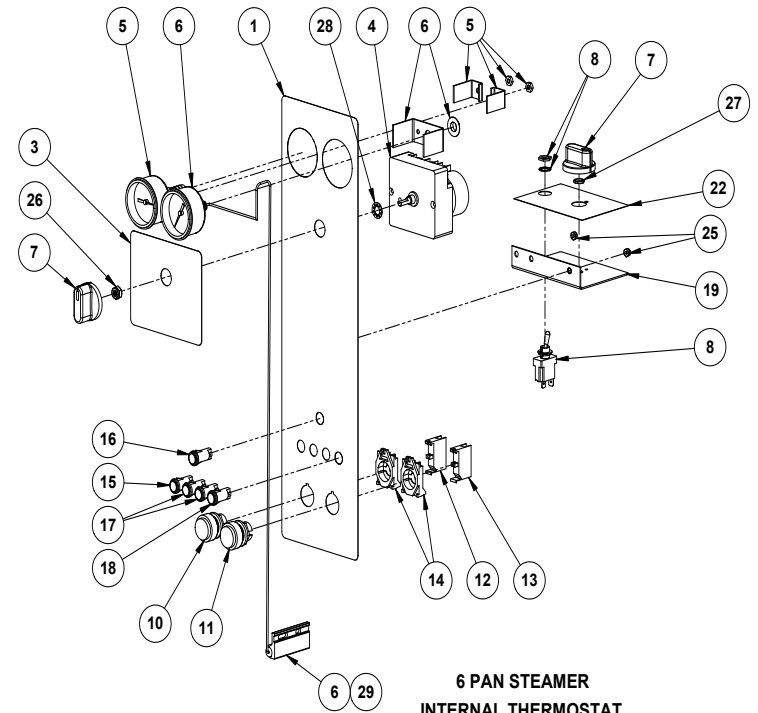
SOME COMPONENTS ARE REMOVED FOR CLARITY
(SEE INDIVIDUAL MODULAR DRAWINGS FOR APPLICABLE PART NUMBERS)



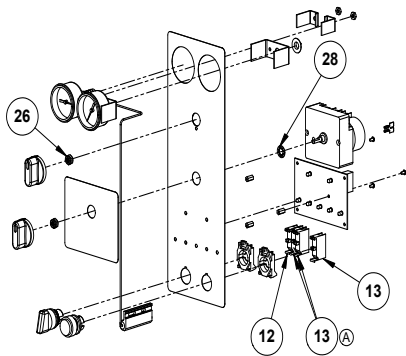
SOME COMPONENTS ARE REMOVED FOR CLARITY
(SEE INDIVIDUAL MODULAR DRAWINGS FOR APPLICABLE PART NUMBERS)



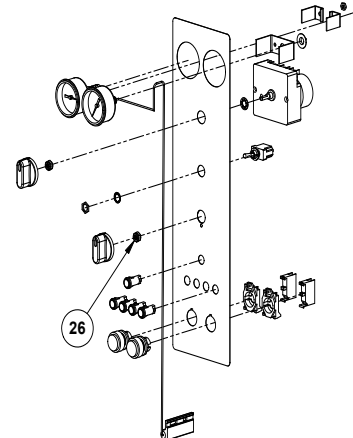
**3 PAN STEAMER
INTERNAL THERMOSTAT
GROUPS 4-6**



**6 PAN STEAMER
INTERNAL THERMOSTAT
GROUPS 10-12**



**3 PAN STEAMER
EXTERNAL THERMOSTAT
GROUPS 1-3
OTHERWISE SAME AS GROUPS 4-6**

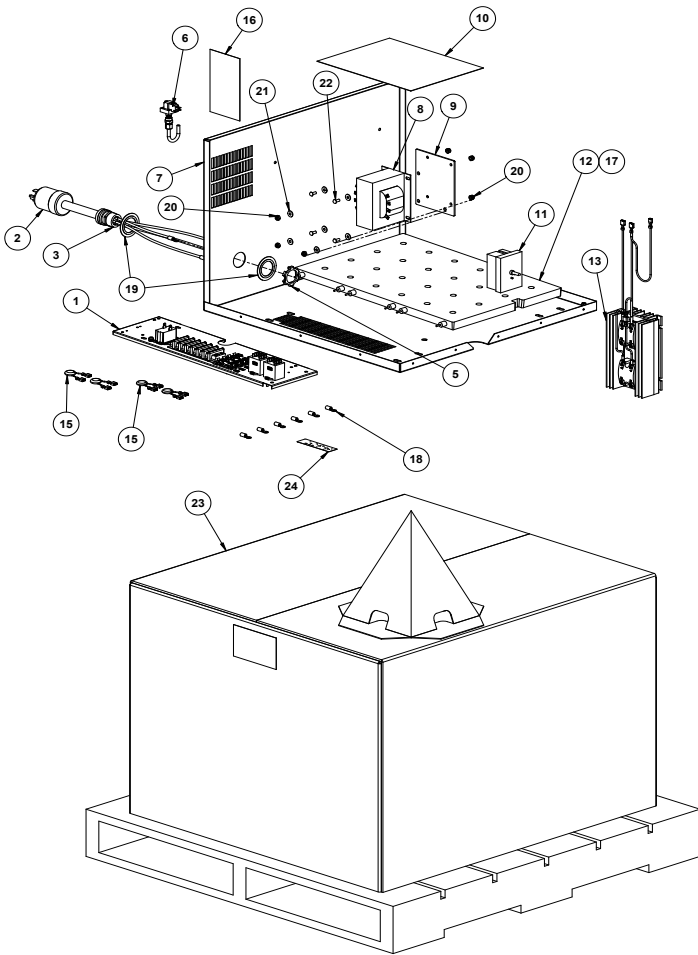
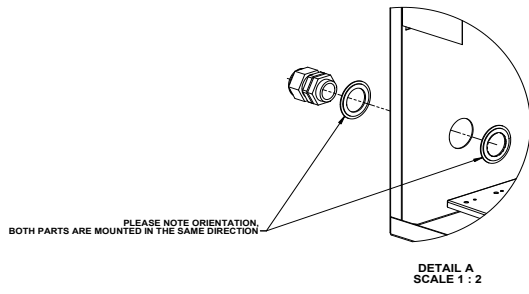


**6 PAN STEAMER
EXTERNAL THERMOSTAT
GROUPS 7-9
OTHERWISE SAME AS GROUPS 10-12**

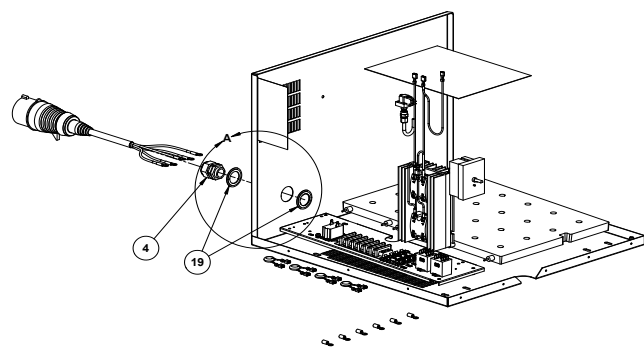
AccuTemp Products, Inc.
8415 N. Clinton Park
Fort Wayne, IN 46825

Title: **MODULE,
CONTROL PANEL**
Drawing No.: **AT1A-3078** Rev: **D**

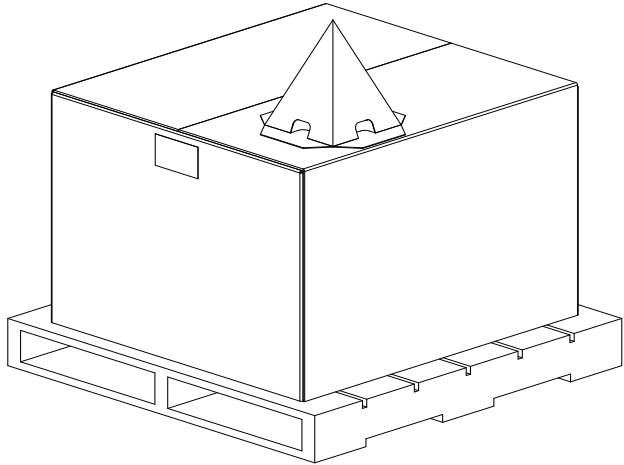
Sheet 2 of 2

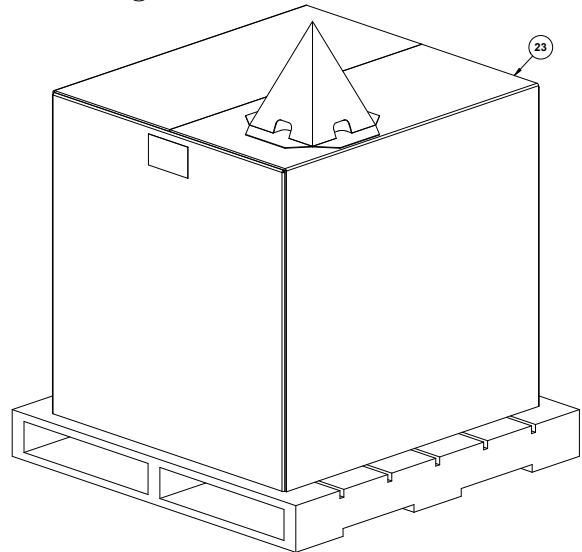
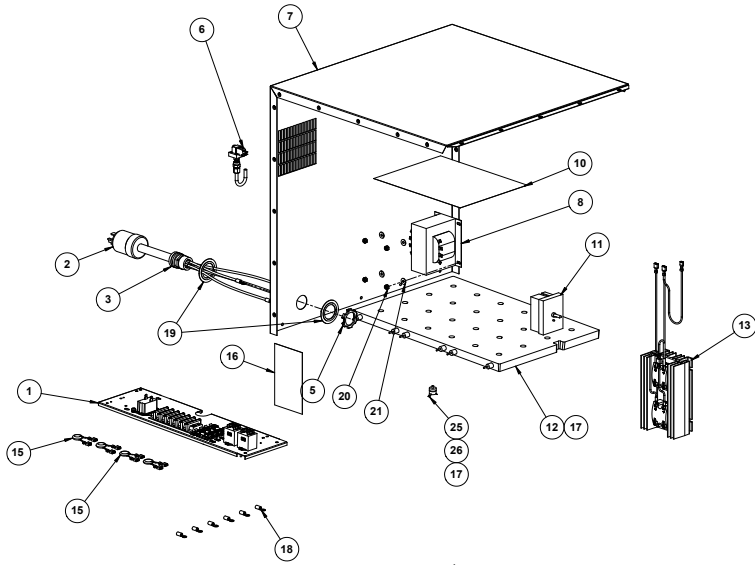
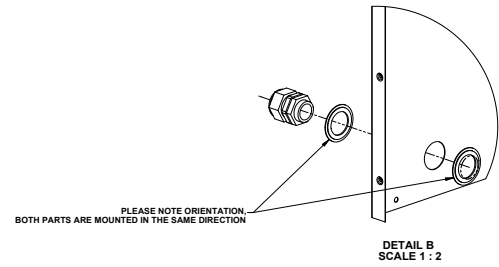


3 PAN STEAMER CONFIGURATION
GROUPS 1, 4-6, 8, 11, 13, 22

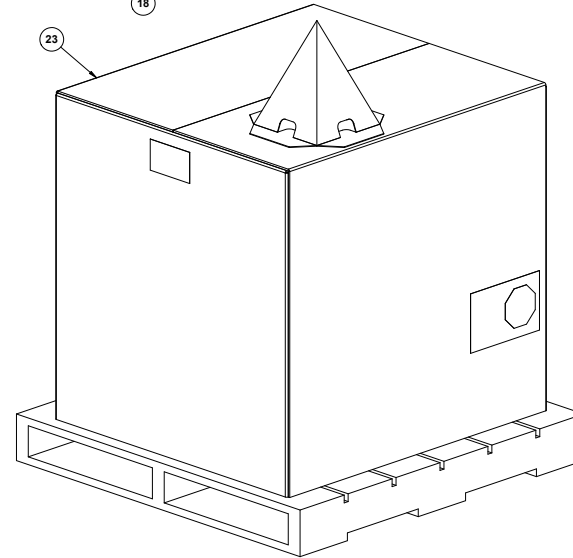
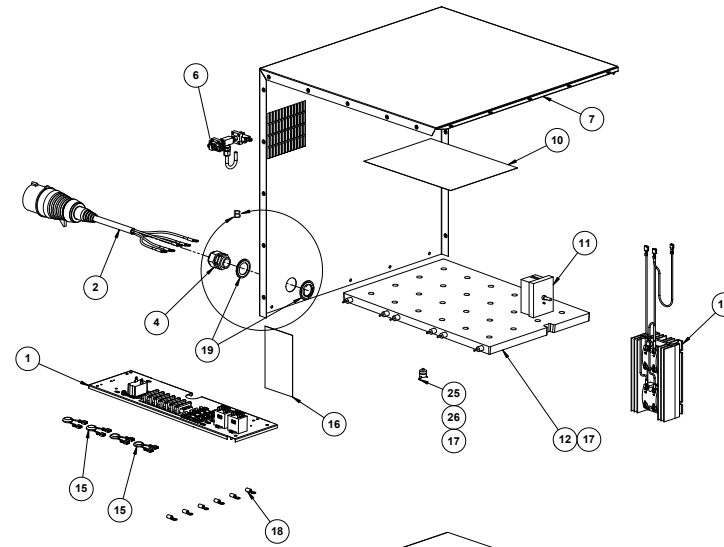


3 PAN STEAMER CONFIGURATION
GROUPS 7, 14, 15
OTHERWISE SAME AS GROUPS 1, 4-6, 8, 9, 11, 13, 22





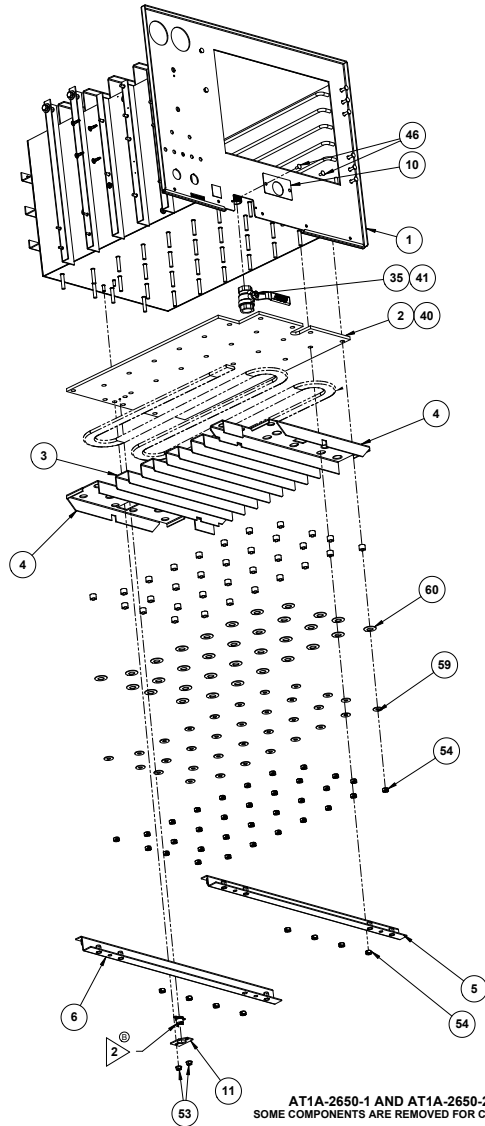
TYPICAL 6 PAN STEAMER CONFIGURATION[®]
AT1A-3472-47 SHOWN
GROUPS 25-31, 33-39, 46-52, 55



TYPICAL 6 PAN STEAMER CONFIGURATION
AT1A-3474-43 SHOWN
GROUPS 32, 40-45, 53

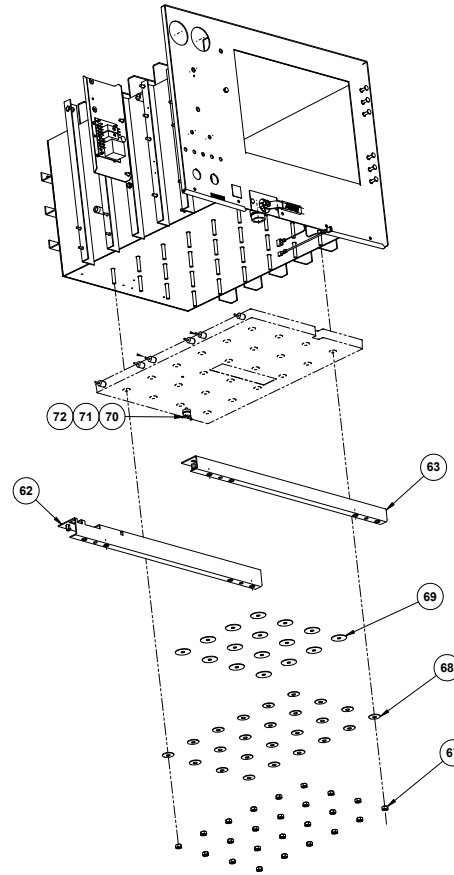
FIREBAR HEATING SYSTEM

S/N 29029 & BELOW EXCEPT FOR 17KW MODELS



CAST HEATER SYSTEM

S/N 29030 & ABOVE & ALL 17KW MODELS



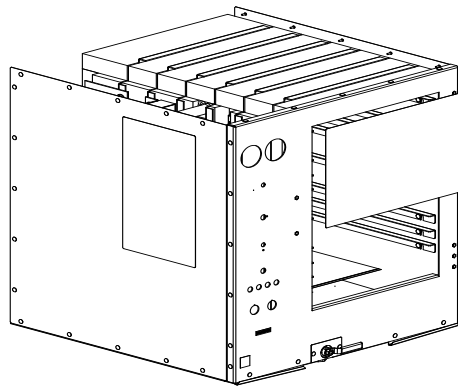
AT1A-2650-3 AND AT1A-2650-4
OTHERWISE SAME AS AT1A-2650-1
SOME COMPONENTS ARE REMOVED FOR CLARITY

1	1	1	1	AT0L-3682-1	81	DECAL, ENERGY STAR
1	1	1	1	AT1L-3658-3	80	OVERLAY, STEAMER OPERATING INSTRUCTIONS
1	1	1	1	AT1L-3658-4	79	OVERLAY, STEAMER OPERATING INSTRUCTIONS
4	4	4	4	AT0H-3407-1	78	C B SUPPORT, REVERSE MT'G.
1	1	-	-	AT0F-2778-41002	77	NUT, #10-24 UNC-2B HEX MACHINE SCREW
2	2	-	-	AT0F-2666-40000	76	WASHER, #10 INTERNAL TOOTH LOCK
1	1	1	1	AT0E-3230-1	75	PCB, DUAL PURPOSE WATER SENSOR
1	1	1	1	AT1M-3428-1	74	BRACKET, WATER SENSOR AUTO-FILL
1	1	1	1	AT1A-3099-1	73	ASSY, GAST VACUUM PUMP MUFFLER
AR	AR	-	-	AT0H-3065-2	72	THREAD LOCKER LIQUID 246
AR	AR	-	-	AT0H-3412-1	71	WAKEFIELD 120 THERMAL JOINT COMPOUND
1	1	-	-	AT1E-2653-3	70	OVERTEMP SWITCH
16	16	-	-	AT0F-3405-1	69	WASHER, ROUND FLAT
24	24	-	-	AT0F-2663-2	68	WASHER, Ø.937 OD BELLEVILLE
24	24	-	-	AT0F-3401-1	67	NUT, SPECIAL LOCKING 1/4-20UNC-2B
1	1	-	-	AT1I-2866-19	66	INSULATION, STEAMER
1	1	-	-	AT1I-2866-18	65	INSULATION, STEAMER
1	1	-	-	AT1I-2866-17	64	INSULATION, STEAMER
1	1	-	-	AT1A-3400-2	63	HEATER MOUNTING BRACKET ASSY
1	1	-	-	AT1A-3400-1	62	HEATER MOUNTING BRACKET ASSY
2	2	2	2	AT0F-1922-50002	61	WASHER, 1/4" HELICAL SPRING LOCK
-	-	32	32	AT0F-2663-1	60	WASHER, Ø1.00 OD BELLEVILLE
-	-	32	32	AT0F-1052-53000	59	WASHER 1/4 PLAIN CUSTOM
2	2	2	2	AT0F-1052-51002	58	WASHER 1/4 TYPE B PLAIN ZINC PLATED
-	-	-	-	-	57	-
4	4	4	4	AT0F-1052-41002	56	WASHER #10 TYPE B PLAIN
8	8	8	8	AT0F-2899-1	55	WASHER, FIBER
-	-	40	40	AT0F-2895-51002	54	NUT, CENTERLOCK LOCK
9	9	11	11	AT0F-1017-41002	53	NUT, #10-24UNC HEX SERRATED
5	4	5	4	AT0F-2691-21002	52	NUT, #6-32 NYLOC
2	2	2	2	AT0F-2937-1	51	U-NUT
2	2	2	2	AT0F-2875-31052	50	SCREW, 1/4-20UNC X 5/8 HEX HEAD MACHINE
8	8	8	8	AT0F-2061-41000	49	SCREW, #10-24 x 1" FLAT HD MACHINE
1	-	1	-	AT0F-2755-21100	48	SCREW, #6-32UNC X 1 1/4 PHILIPS ROUND HEAD MACHINE
4	4	4	4	AT0F-2755-41042	47	SCREW, #10-24UNC X 1/2 PHILIPS ROUND HEAD MACHINE
13	13	13	13	AT0F-1046-31030	46	SCREW, #8-32 x 3/8 PHLP TRUSS HEAD
2	2	2	2	AT0F-2777-31040	45	SCREW, #8 TYPE AB X 1/2 TRUSS HD
1	1	1	1	AT1A-3387-1	44	LOOSE PIECES, STEAMER
1	-	1	-	AT1H-3388-1	43	BUMPER RUBBER
1	1	1	1	AT0E-2699-2	42	OD TERMINAL FEMALE INSULATED 18-22 AWG .250 x .032 TAB
AR	AR	AR	AR	AT0H-3102-1	41	PIPE THREAD SEALANT
AR	AR	AR	AR	AT0H-3369-1	40	LUBRICANT, ANTI-SEIZE
AR	AR	AR	AR	AT0H-3065-3	39	THREAD LOCKER 248
1	1	1	1	AT1L-3369-1	38	LABEL, SERIAL NUMBER
1	1	1	1	AT1L-3357-1	37	LABEL, SERIAL NUMBER DATA
1	1	1	1	AT0S-3398-1	36	ENVELOPE, CLEAR
1	1	1	1	AT1P-2239-1	35	BALL VALVE
1	1	1	1	AT0E-1587-1	34	3 POLE CONTACTOR
2	2	2	2	AT1E-2652-1	33	PROBE, WATER SENSOR
1	1	1	1	AT0P-2096-3	32	ELBOW 90° 1/8 NPT TO 1/4 TUBE
3	3	3	3	AT0P-2714-2	31	HOSE CLAMP 1/2" ID
1	1	1	1	AT0P-2714-1	30	HOSE CLAMP 1/4" ID
1	1	1	1	AT0E-3661-1	29	J TYPE THERMOCOUPLE
-	-	-	-	-	28	-
1	1	1	1	AT1A-3066-7	27	HOSE ASSEMBLY
1	1	1	1	AT1A-3066-5	26	HOSE ASSEMBLY
1	1	1	1	AT1I-2866-14	25	INSULATION, STEAMER
2	2	2	2	AT1I-2866-13	24	INSULATION, STEAMER
1	1	1	1	AT1I-2866-12	23	INSULATION, STEAMER
-	-	1	1	AT1I-2866-10	22	INSULATION, STEAMER
-	-	1	1	AT1I-2866-9	21	INSULATION, STEAMER
-	-	10	10	AT1I-2866-7	20	INSULATION, STEAMER
1	1	1	1	AT1I-2866-20	19	INSULATION, STEAMER
2	2	2	2	AT1I-2866-4	18	INSULATION, STEAMER
8	8	8	8	AT1I-2866-3	17	INSULATION, STEAMER
1	1	1	1	AT1I-2866-2	16	INSULATION, STEAMER
9	9	9	9	AT1I-2866-1	15	INSULATION, STEAMER
-	-	-	-	-	14	-
1	1	1	1	AT1M-2573-2	13	DRIP EDGE
1	1	1	1	AT1M-2573-1	12	DRIP EDGE
-	-	1	1	AT1M-2651-2	11	OVERTEMP BRACKET
1	1	1	1	AT1M-3348-1	10	COVER, STEAMER DRAIN
1	1	1	1	AT1M-2516-1	9	TOP SHELL, 3 PAN
2	2	2	2	AT1A-2548-1	8	ASSY, PAN RACK
-	-	-	-	-	7	-
-	-	1	1	AT1A-2623-3	6	ASSY, REAR BOTTOM Z BRACKET
-	-	1	1	AT1A-2626-3	5	ASSY, FRONT BOTTOM Z BRACKET
-	-	2	2	AT1M-2862-6	4	HEATER MOUNT
-	-	4	4	AT1M-2863-3	3	CENTER HEATER MOUNT
-	-	1	1	AT1M-3068-1	2	HEAT SINK PLATE
1	-	-	-	AT1A-3365-4	1	CHAMBER WELDMENT ASSY, LH DR STEAMER
-	1	-	-	AT1A-3365-3	1	CHAMBER WELDMENT ASSY, RH DR STEAMER
-	-	1	-	AT1A-3365-2	1	CHAMBER WELDMENT ASSY, LH DR STEAMER
-	-	1	-	AT1A-3365-1	1	CHAMBER WELDMENT ASSY, RH DR STEAMER

QTY	PART NUMBER	ITEM	DESCRIPTION
QTY	AT1A-2650-4		
QTY	AT1A-2650-3		
QTY	AT1A-2650-2		
QTY	AT1A-2650-1		

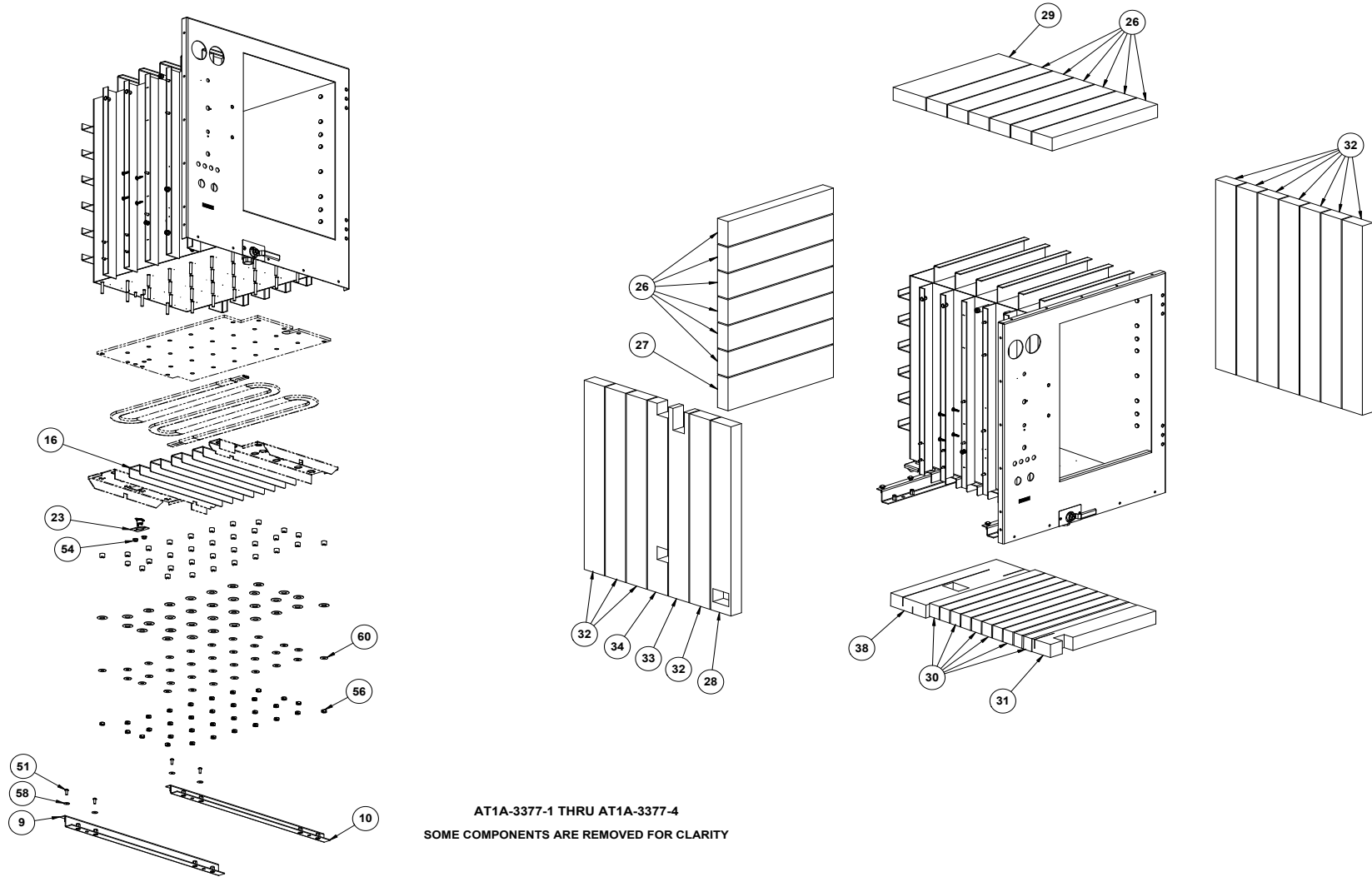
AccuTemp Products, Inc.
8416 N. Clinton Park
Fort Wayne, IN 46825

AccuTemp
MODULE, 3 PAN
COMMON COMPONENTS
Drawing No. AT1A-2650 Rev
Sheet 1 of 2



QTY	QTY	QTY	QTY	QTY	QTY	QTY	QTY	QTY	QTY	PART NUMBER	ITEM	DESCRIPTION
1	1	1	1	1	1	1	1	1	1	AT0L-3682-1	82	DECAL, ENERGY STAR
1	1	1	1	1	1	1	1	1	1	AT1L-3658-3	81	OVERLAY, STEAMER OPERATING INSTRUCTIONS
1	1	1	1	1	1	1	1	1	1	AT1L-3658-4	80	OVERLAY, STEAMER OPERATING INSTRUCTIONS
4	4	4	4	4	4	4	4	4	4	AT0H-3407-1	79	C B SUPPORT, REVERSE M'T'G.
1	1	1	1	1	1	1	1	1	1	AT0F-2778-41002	78	NUT, #10-24 UNC-2B HEX MACHINE SCREW
2	2	2	2	2	2	2	2	2	2	AT0F-2666-40000	77	WASHER, #10 INTERNAL TOOTH LOCK
1	1	1	1	1	1	1	1	1	1	AT0E-3230-1	76	PCB, DUAL PURPOSE WATER SENSOR
1	1	1	1	1	1	1	1	1	1	AT1M-3428-1	75	BRACKET, WATER SENSOR AUTO-FILL
1	1	1	1	1	1	1	1	1	1	AT1A-3099-1	74	ASSY, GAST VACUUM PUMP MUFFLER
1	1	1	1	1	1	1	1	1	1	AT1L-3357-1	73	LABEL, SERIAL NUMBER DATA
2	2	-	-	2	2	-	-	-	-	AT0F-3448-31036	72	SCREW, #8-32x3/8" DRL SPAN PAN HD MACH
-	-	2	2	-	-	2	2	-	-	AT0F-1046-31030	72	SCREW, #8-32 x 3/8 PHL P TRUSS HEAD
1	1	1	1	1	1	1	1	1	1	AT1L-2624-1	71	LABEL STEAMER LEGS
1	1	1	1	1	1	1	1	1	1	AT1P-2239-1	70	BALL VALVE
AR	AR	AR	AR	AR	AR	AR	AR	AR	AR	AT0H-3102-1	69	PIPE THREAD SEALANT
											68	
											67	
AR	AR	-	-	AR	AR	-	-	-	-	AT0H-3065-3	66	THREAD LOCKER 248
16	16	16	16	-	-	-	-	-	-	AT0F-3405-1	65	WASHER, ROUND FLAT
8	8	8	8	8	8	8	8	8	8	AT0F-2899-1	64	WASHER, FIBER
24	24	24	24	-	-	-	-	-	-	AT0F-2663-2	63	WASHER, Ø.937 OD BELLEVILLE
-	-	-	-	32	32	32	32	-	-	AT0F-2663-1	62	WASHER, Ø1.00 OD BELLEVILLE
2	2	2	2	2	2	2	2	2	2	AT0F-1922-50002	61	WASHER, 1/4" HELICAL SPRING LOCK
-	-	-	-	32	32	32	32	-	-	AT0F-1052-53000	60	WASHER 1/4 PLAIN CUSTOM
2	2	2	2	2	2	2	2	2	2	AT0F-1052-51002	59	WASHER 1/4 TYPE B PLAIN ZINC PLATED
4	4	4	4	4	4	4	4	4	4	AT0F-1052-41002	58	WASHER #10 TYPE B PLAIN
24	24	24	24	-	-	-	-	-	-	AT0H-3401-1	57	NUT, SPECIAL LOCKING 1/4-20UNC-2B
-	-	-	-	40	40	40	40	-	-	AT0F-2895-51002	56	NUT, CENTERLOCK LOCK
6	4	6	4	6	4	6	4	-	-	AT0F-2691-21002	55	NUT, #6-32 NYLOC
9	9	9	9	11	11	11	11	-	-	AT0F-1017-41002	54	NUT, #10-24UNC HEX SERRATED
2	-	-	-	2	-	-	-	-	-	AT0F-3448-21106	53	SCREW, #6-32x1 1/4" DRL SPAN PAN HD MACH
-	-	2	-	-	-	2	-	-	-	AT0F-2755-21100	53	SCREW, #6-32UNC X 1 1/4 PHILIPS ROUND HEAD MACHINE
57	57	-	-	57	57	-	-	-	-	AT0F-2451-32036	52	SCREW, #8 TYPE AB X 3/8 DRL SPAN PAN HD
-	-	57	57	-	-	57	57	-	-	AT0F-2777-31030	52	SCREW, #8 TYPE AB X 3/8 TRUSS HD
4	4	4	4	4	4	4	4	4	4	AT0F-2755-41042	51	SCREW, #10-24UNC X 1/2 PHILIPS ROUND HEAD MACHINE
8	8	-	-	8	8	-	-	-	-	AT0F-3460-41066	50	SCREW, #10-24 x 3/4" DRL SPAN FLT HD MACH
											49	
2	2	2	2	2	2	2	2	2	2	AT0F-2875-61052	49	SCREW, 1/4-20UNC X 5/8 HEX HEAD MACHINE
1	1	1	1	1	1	1	1	1	1	AT1A-3387-1	48	LOOSE PIECES, STEAMER
1	1	1	1	1	1	1	1	1	1	AT1L-3369-1	47	LABEL, SERIAL NUMBER
1	1	1	1	1	1	1	1	1	1	AT0P-2618-2	46	FITTING, 1/8" NPT TO 1/2" HOSE BARB
4	4	4	4	4	4	4	4	4	4	AT0P-2714-2	45	HOSE CLAMP 1/2" ID
1	1	1	1	1	1	1	1	1	1	AT0P-2714-1	44	HOSE CLAMP 1/4" ID
1	1	1	1	1	1	1	1	1	1	AT0P-2096-3	43	ELBOW 90° 1/8 NPT TO 1/4 TUBE
2	-	2	-	2	-	2	-	-	-	AT1H-3388-1	42	BUMPER RUBBER
1	1	1	1	1	1	1	1	1	1	AT0S-3398-1	41	ENVELOPE, CLEAR
1	1	1	1	1	1	1	1	1	1	AT0E-3661-1	40	J TYPE THERMOCOUPLE
2	2	2	2	2	2	2	2	2	2	AT1E-2652-1	39	PROBE, WATER SENSOR
-	-	-	-	1	1	1	1	1	1	AT11-2866-10	38	INSULATION, STEAMER
1	1	1	1	-	1	-	1	-	-	AT11-2866-19	37	INSULATION, STEAMER
1	1	1	1	-	1	-	1	-	-	AT11-2866-18	36	INSULATION, STEAMER
1	1	1	1	-	1	-	1	-	-	AT11-2866-17	35	INSULATION, STEAMER
1	1	1	1	1	1	1	1	1	1	AT11-2866-16	34	INSULATION, STEAMER
1	1	1	1	1	1	1	1	1	1	AT11-2866-15	33	INSULATION, STEAMER
11	11	11	11	11	11	11	11	11	11	AT11-2866-11	32	INSULATION, STEAMER
-	-	-	-	1	1	1	1	1	1	AT11-2866-9	31	INSULATION, STEAMER
-	-	-	-	10	10	10	10	10	10	AT11-2866-7	30	INSULATION, STEAMER
1	1	1	1	1	1	1	1	1	1	AT11-2866-6	29	INSULATION, STEAMER
1	1	1	1	1	1	1	1	1	1	AT11-2866-5	28	INSULATION, STEAMER
1	1	1	1	1	1	1	1	1	1	AT11-2866-2	27	INSULATION, STEAMER
12	12	12	12	12	12	12	12	12	12	AT11-2866-1	26	INSULATION, STEAMER
											25	
											24	
-	-	-	-	1	1	1	1	1	1	AT1M-2651-2	23	OVERTEMP BRACKET
1	1	1	1	1	1	1	1	1	1	AT0E-1587-1	22	3 POLE CONTACTOR
1	1	-	-	1	1	-	-	-	-	AT1M-2905-2	21	PAN RACK SOLID RIGHT HAND
1	1	-	-	1	1	-	-	-	-	AT1M-2905-1	20	PAN RACK SOLID LEFT HAND
-	-	8	8	-	-	8	8	-	-	AT1M-2590-2	19	RAIL, PAN SUPPORT RIGHT HAND
-	-	8	8	-	-	8	8	-	-	AT1M-2590-1	18	RAIL, PAN SUPPORT LEFT HAND
1	1	1	1	1	1	1	1	1	1	AT1M-3348-1	17	COVER, STEAMER DRAIN
-	-	-	-	4	4	4	4	4	4	AT1M-2863-3	16	CENTER HEATER MOUNT
1	1	1	1	1	1	1	1	1	1	AT1M-2573-2	15	DRIP EDGE
1	1	1	1	1	1	1	1	1	1	AT1M-2573-1	14	DRIP EDGE
1	1	1	1	1	1	1	1	1	1	AT1A-3066-6	13	HOSE ASSEMBLY
1	1	1	1	-	1	-	1	-	-	AT1A-3400-2	12	HEATER MOUNTING BRACKET ASSY
1	1	1	1	-	1	-	1	-	-	AT1A-3400-1	11	HEATER MOUNTING BRACKET ASSY
-	-	-	-	1	1	1	1	1	1	AT1A-2626-3	10	ASSY, FRONT BOTTOM Z BRACKET
-	-	-	-	1	1	1	1	1	1	AT1A-2623-3	9	ASSY, REAR BOTTOM Z BRACKET
1	1	1	1	1	1	1	1	1	1	AT1A-3066-4	8	HOSE ASSEMBLY
											7	
											6	
											5	
1	1	1	1	1	1	1	1	1	1	AT1M-2981-2	4	PANEL, LEFT SIDE
1	1	1	1	1	1	1	1	1	1	AT1M-2981-1	3	PANEL, RIGHT SIDE
1	1	1	1	1	1	1	1	1	1	AT1A-3409-2	2	BOTTOM SHELL (6 PAN)
1	-	-	-	-	-	-	-	-	-	AT1A-2968-8	1	CHAMBER WELD ASSEMBLY 6 PAN STEAMER - LH CAST TAMPER-PROOF
-	1	-	-	-	-	-	-	-	-	AT1A-2968-7	1	CHAMBER WELD ASSEMBLY 6 PAN STEAMER - RH CAST TAMPER-PROOF
-	1	-	-	-	-	-	-	-	-	AT1A-2968-6	1	CHAMBER WELD ASSEMBLY 6 PAN STEAMER - LH CAST
-	1	-	-	-	-	-	-	-	-	AT1A-2968-5	1	CHAMBER WELD ASSEMBLY 6 PAN STEAMER - RH CAST
-	1	-	-	1	-	-	-	-	-	AT1A-2968-4	1	CHAMBER WELD ASSY 6 PAN STEAMER - LH FIREBAR TAMPER-PROOF UNIT
-	1	-	-	-	-	1	-	-	-	AT1A-2968-3	1	CHAMBER WELD ASSEMBLY 6 PAN STEAMER
-	1	-	-	-	-	-	-	1	-	AT1A-2968-2	1	CHAMBER WELD ASSY 6 PAN STEAMER - LH FIREBAR
-	1	-	-	-	-	-	-	-	1	AT1A-2968-1	1	CHAMBER WELD ASSY 6 PAN STEAMER - RH FIREBAR

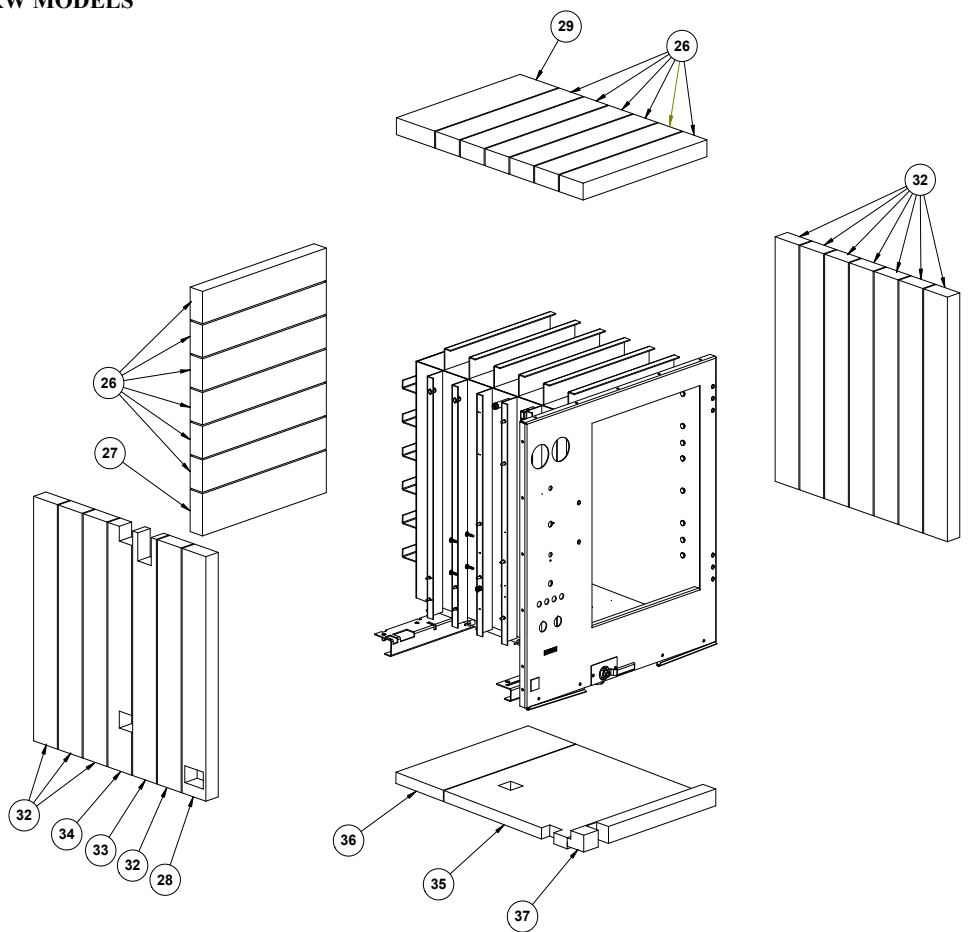
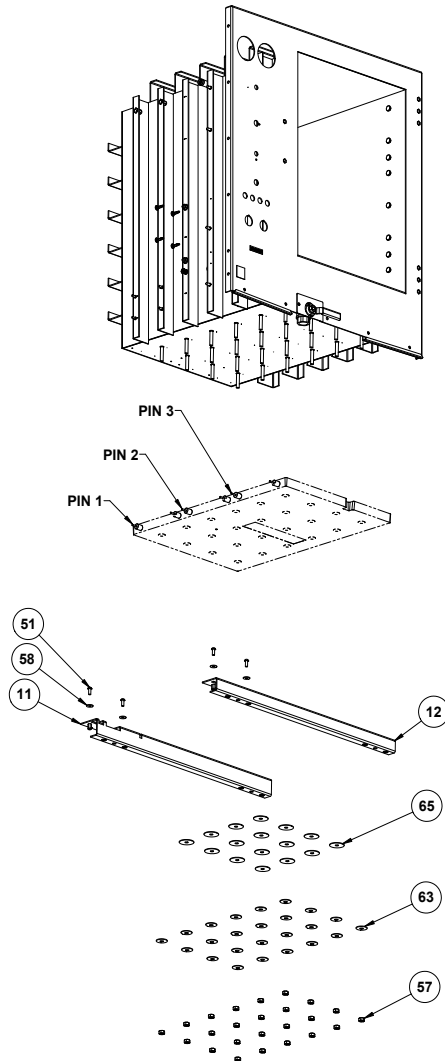
**WATLOW FIREBAR HEATING SYSTEM
S/N 29029 AND BELOW EXCEPT 17KW MODELS**



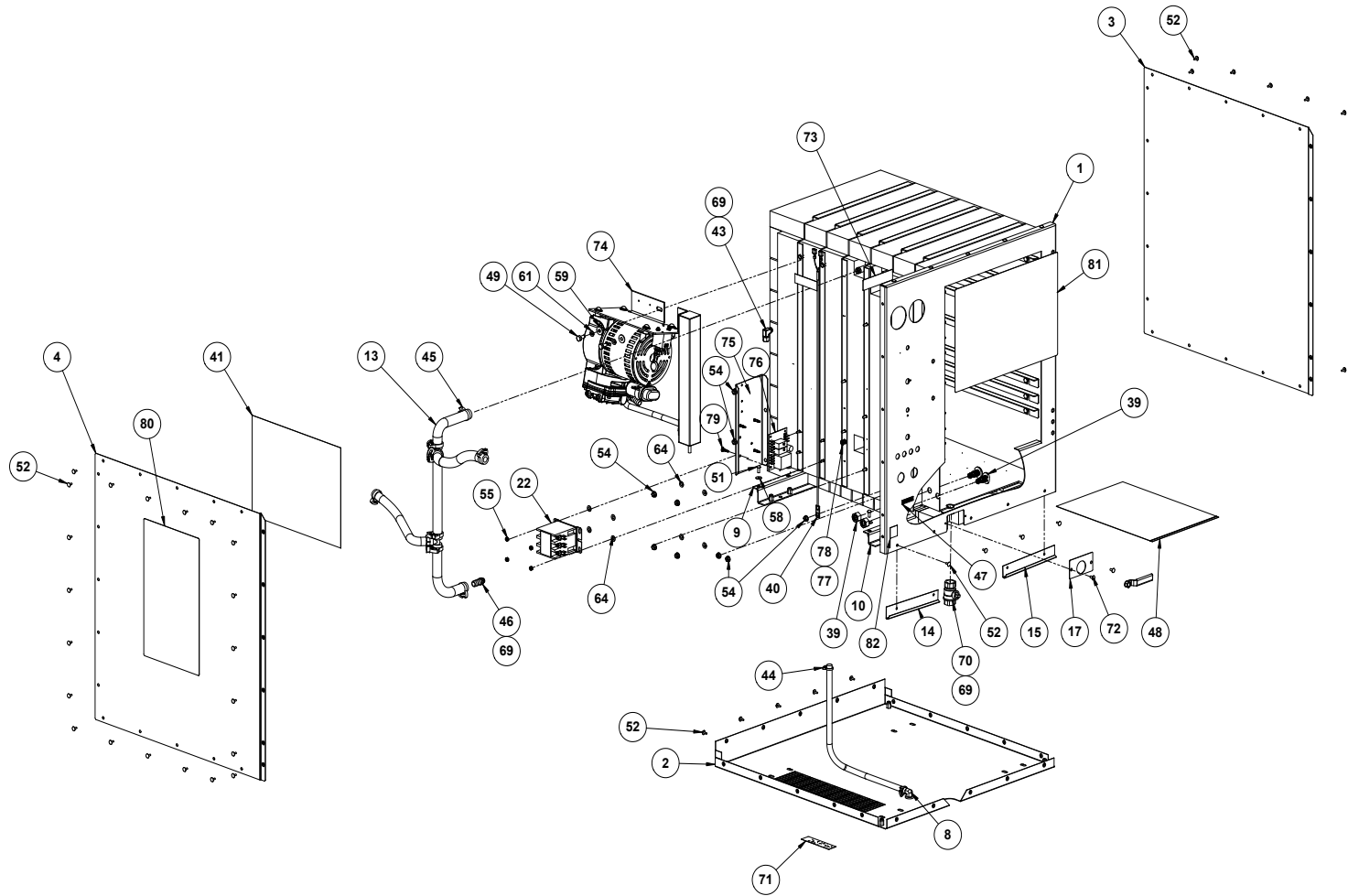
AT1A-3377-1 THRU AT1A-3377-4
SOME COMPONENTS ARE REMOVED FOR CLARITY

CAST HEATER SYSTEM

S/N 29030 & ABOVE & ALL 17KW MODELS

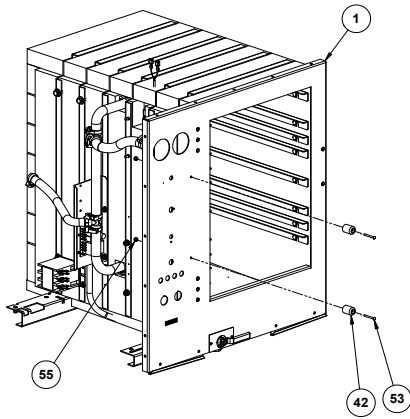


AT1A-3377-5 THRU AT1A-3377-8
OTHERWISE SAME AS AT1A-3377-1 THRU AT1A-3377-4
SOME COMPONENTS ARE REMOVED FOR CLARITY

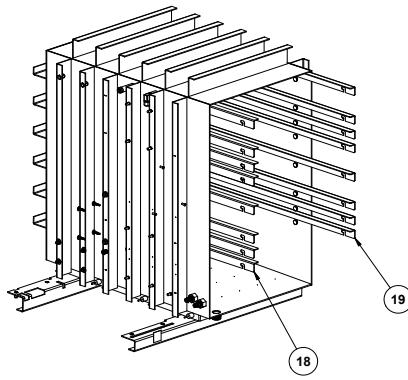


AT1A-3377-1 THRU AT1A-3377-8
 SOME COMPONENTS ARE REMOVED FOR CLARITY

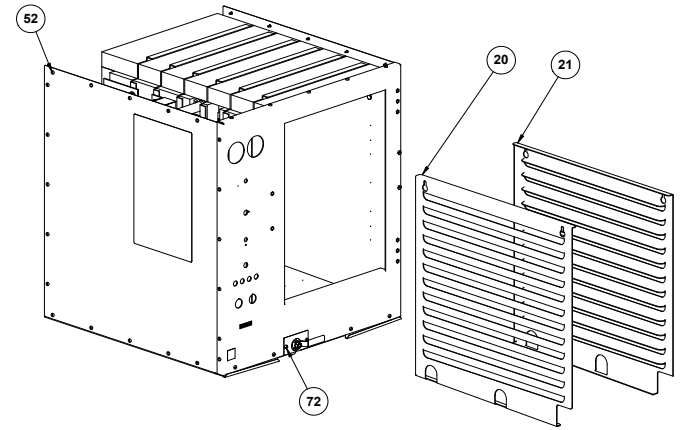
 AccuTemp Products, Inc.
 2615 N. Center Blvd.
 Fort Wayne, IN 46825
 Title: **MODULE 6 PAN**
COMMON COMPONENTS
 Drawing No. **AT1A-3377** Rev. **L**
 Sheet 4 of 5



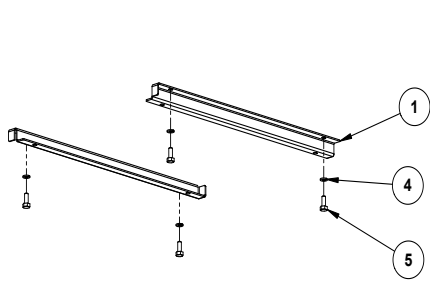
LEFT HAND DOOR
 AT1A-3377-2, -4, -6, & -8
 SOME COMPONENTS ARE REMOVED FOR CLARITY



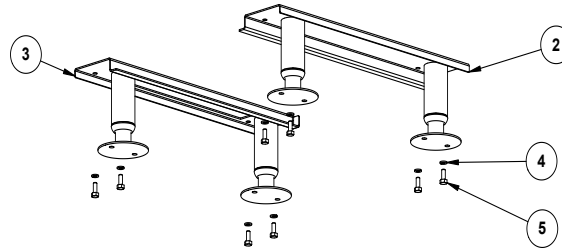
AT1A-3377-1, -2, -5 & -6
 SOME COMPONENTS ARE MODIFIED OR REMOVED FOR CLARITY



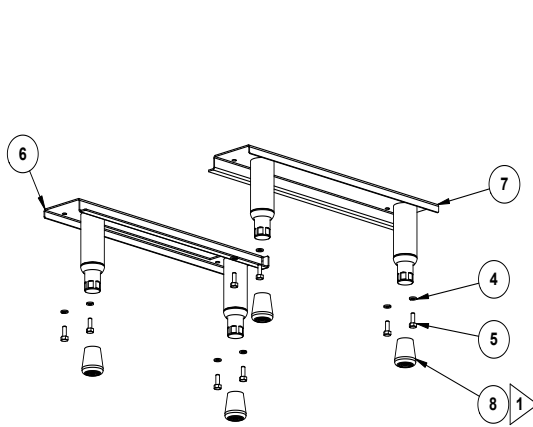
PRISON SPEC
 AT1A-3377-3, -4, -7, & -8
 SOME COMPONENTS ARE REMOVED FOR CLARITY



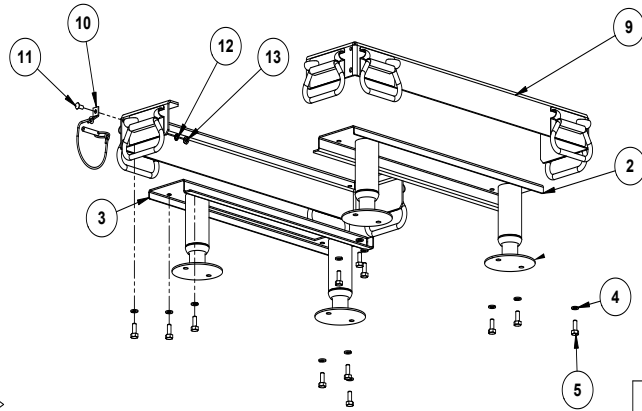
AT1A-3500-1
AT1A-3500-2



AT1A-3500-3
AT1A-3500-4



AT1A-3500-5
AT1A-3500-6



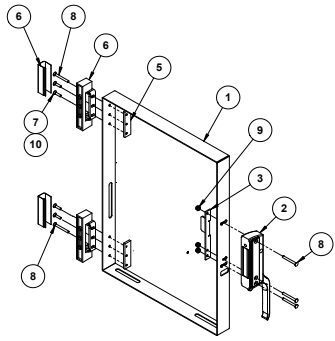
AT1A-3500-7

1	-	-	-	-	-	-	AT0F-2778-41001	13	NUT, #10-24UNC-2B SS HEX MACHINE SCREW
1	-	-	-	-	-	-	AT0F-2666-40000	12	WASHER, #10 INTERNAL TOOTH LOCK
1	-	-	-	-	-	-	AT0F-2755-41040	11	SCREW, #10-24UNC X 1/2 PHILIPS ROUND HEAD MACHINE
1	-	-	-	-	-	-	AT0H-3783-1	10	PIN, SAFETY LATCHING W/LANYARD
2	-	-	-	-	-	-	AT1A-3717-1	9	ASSEMBLY, LIFTING BRACKET
-	4	4	-	-	-	-	AT0H-3040-1	8	RUBBER BULLET FOOT TIP
-	1	1	-	-	-	-	AT1A-3038-1	7	LEG BASE RIGHT ASSEMBLY
-	1	1	-	-	-	-	AT1A-3038-2	6	LEG BASE LEFT ASSEMBLY
-	8	-	8	-	4	-	AT0F-3448-51066	5	SCREW, 1/4-20 x 3/4" DRL SPAN PAN HD MACH
12	-	8	-	8	-	4	AT0F-2875-51050	5	SCREW, 1/4-20UNC X 5/8 HEX HEAD MACHINE
12	8	8	8	8	4	4	AT0F-1922-50000	4	WASHER, 1/4" HELICAL SPRING LOCK
1	-	-	1	1	-	-	AT1A-3038-5	3	LEG BASE FLANGE LEFT ASSEMBLY
1	-	-	1	1	-	-	AT1A-3038-4	2	LEG BASE FLANGE RIGHT ASSEMBLY
-	-	-	-	-	2	2	AT1M-2872-1	1	DRAIN PAN BRACKET
QTY	QTY	QTY	QTY	QTY	QTY	QTY	PART NUMBER	ITEM	DESCRIPTION
AT1A-3500-7	AT1A-3500-6	AT1A-3500-5	AT1A-3500-4	AT1A-3500-3	AT1A-3500-2	AT1A-3500-1			

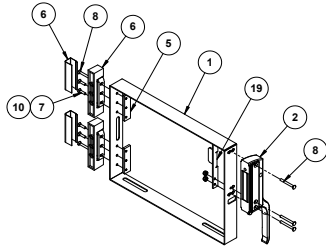


AccuTemp Products, Inc.
8415 N. Clinton Park
Fort Wayne, IN 46825

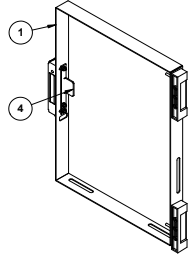
MODULE,
LEG CONFIGURATION
Drawing No. **AT1A-3500** Rev. **D**
Sheet 1 of 1



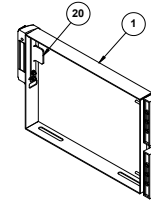
AT1A-2428-1 & AT1A-2428-5
OUTER DOOR ASSEMBLY 6 PAN RIGHT HAND



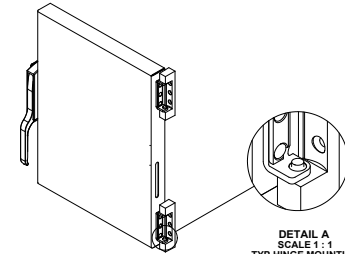
AT1A-2428-2
OUTER DOOR ASSEMBLY 3 PAN RIGHT HAND



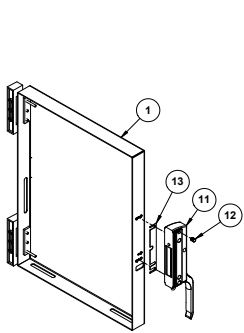
AT1A-2428-3 & AT1A-2428-6
OUTER DOOR ASSEMBLY 6 PAN LEFT HAND
(SAME AS -1, EXCEPT AS SHOWN)



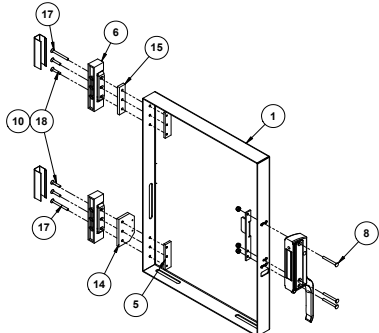
AT1A-2428-4
OUTER DOOR ASSEMBLY 3 PAN LEFT HAND
(SAME AS -2 EXCEPT AS SHOWN)



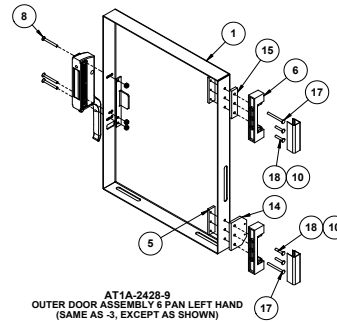
DETAIL A
SCALE 1 : 1
TYP HINGE MOUNTING
FOR AT1A-2428-1, -3, -5, -6, -7, -12 & -13



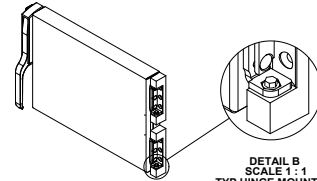
AT1A-2428-7
OUTER DOOR ASSEMBLY 6 PAN RIGHT HAND
(SAME AS -1, EXCEPT AS SHOWN)



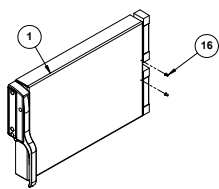
AT1A-2428-8
OUTER DOOR ASSEMBLY 6 PAN RIGHT HAND
(SAME AS -1, EXCEPT AS SHOWN)



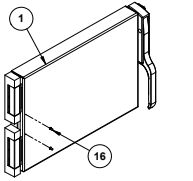
AT1A-2428-9
OUTER DOOR ASSEMBLY 6 PAN LEFT HAND
(SAME AS -3, EXCEPT AS SHOWN)



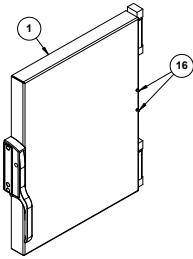
DETAIL B
SCALE 1 : 1
TYP HINGE MOUNTING
FOR AT1A-2428-2, -4, -6, -8, -10 & -11



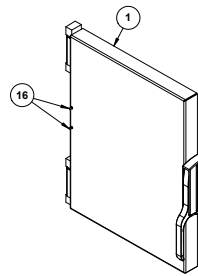
AT1A-2428-10
OUTER DOOR ASSEMBLY 3 PAN RIGHT HAND
(SAME AS -2, EXCEPT AS SHOWN)



AT1A-2428-11
OUTER DOOR ASSEMBLY 3 PAN LEFT HAND
(SAME AS -4, EXCEPT AS SHOWN)



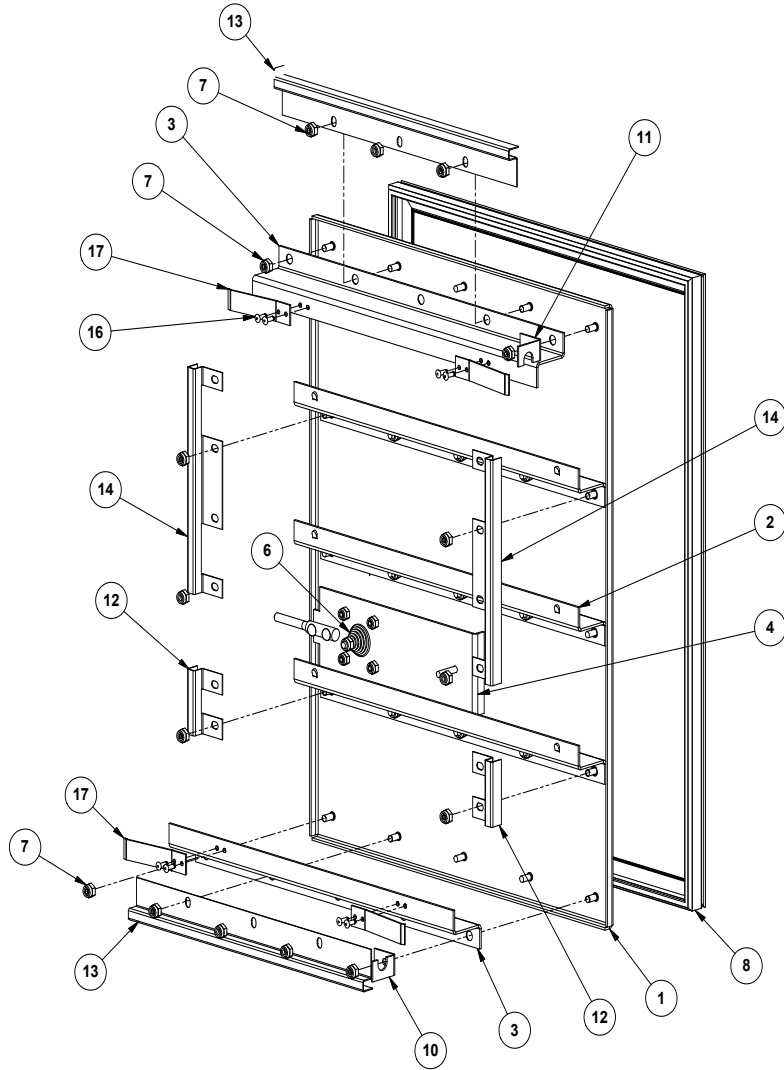
AT1A-2428-12
OUTER DOOR ASSEMBLY 6 PAN RIGHT HAND
(SAME AS -1, EXCEPT AS SHOWN)



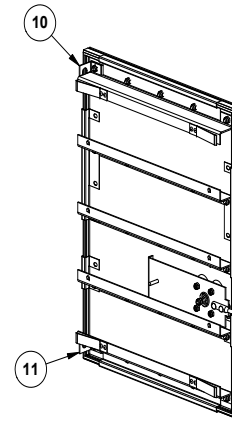
AT1A-2428-13
OUTER DOOR ASSEMBLY 6 PAN LEFT HAND
(SAME AS -3, EXCEPT AS SHOWN)

-	-	1	-	-	-	-	-	-	1	-	-	-	AT1M-3046-4	20	LATCH MOUNTING PLATE 3 PAN LEFT HAND
-	-	-	1	-	-	-	-	-	-	1	-	-	AT1M-3046-3	19	LATCH MOUNTING PLATE 3 PAN RIGHT HAND
-	-	-	-	4	4	-	-	-	-	-	-	-	ATOF-2061-41080	18	SCREW, #10-24 x 1" FLAT HD MACHINE
-	-	-	-	-	2	2	-	-	-	-	-	-	ATOF-2061-41160	17	SCREW, #10-24 x 2" FLAT HD MACHINE
-	-	-	-	-	-	-	-	-	-	-	-	-	ATOF-1016-21020	16	#6-32 x 1/4" FL STUD
2	2	2	2	-	-	-	-	-	-	-	-	-	AT1M-3655-2	15	SPACER HINGE
-	-	-	-	1	1	-	-	-	-	-	-	-	AT1M-3440-2	14	PLATE, MOUNTING HINGE HOLD OPEN
-	-	-	-	-	-	1	-	-	-	-	-	-	AT1M-3523-1	13	SPACER, LATCH
-	-	-	-	-	-	1	-	-	-	-	-	-	ATOF-3537-1	12	BARBED PUSH FASTENER
-	-	-	-	-	-	-	-	-	-	-	-	-	AT1A-3536-1	11	LATCH HANDLE ASSEMBLY, INTERIM
AR	AR	AR	AR	AR	AR	AR	AR	AR	AR	AR	AR	AR	ATOH-3065-3	10	THREAD LOCKER 248
3	3	3	3	3	3	3	3	3	3	3	3	3	ATOF-2691-41011	9	NUT, #10-24 WAXED NYLOC
5	5	5	5	3	3	5	-	-	5	5	5	5	ATOF-2061-41140	8	SCREW, #10-24 x 1 1/2" FLAT HD MACHINE
-	-	-	-	-	-	-	-	5	5	-	-	-	ATOF-3480-41166	8	SCREW, #10-24 x 2" DRL SPAN FLT HD MACH
-	-	-	-	-	-	-	-	4	4	-	-	-	ATOF-3480-41086	7	SCREW, #10-24 x 3/4" DRL SPAN FLT HD MACH
4	4	4	4	-	-	4	-	-	4	4	4	4	ATOF-2061-41080	7	SCREW, #10-24 x 1/2" FLAT HD MACHINE
2	2	2	2	2	2	2	2	2	2	2	2	2	AT1H-2058-3	6	HINGE, STEAMER DOOR
2	2	2	2	2	2	2	2	2	2	2	2	2	AT1M-2689-1	5	HINGE MOUNTING PLATE
1	-	-	-	1	-	1	-	1	-	1	-	1	AT1M-3046-2	4	LATCH MOUNTING PLATE 6 PAN LEFT HAND
-	1	-	-	-	1	1	-	1	-	-	1	-	AT1M-3046-1	3	LATCH MOUNTING PLATE 6 PAN RIGHT HAND
1	1	1	1	1	1	-	1	1	1	1	1	1	AT1A-3447-1	2	LATCH HANDLE ASSEMBLY
-	-	1	-	-	-	-	-	1	-	-	-	-	AT1M-2434-4	1	OUTER DOOR PANEL 3 PAN LEFT HAND
1	-	-	-	1	-	-	-	-	1	-	-	-	AT1M-2434-3	1	OUTER DOOR PANEL 3 PAN LEFT HAND
-	-	-	1	-	-	-	-	-	-	1	-	-	AT1M-2434-2	1	OUTER DOOR PANEL 3 PAN RIGHT HAND
-	1	-	-	-	1	1	-	1	-	-	1	-	AT1M-2434-1	1	OUTER DOOR PANEL 6 PAN RIGHT HAND
AT1A-2428-13													PART NUMBER	ITEM NO.	Description
AT1A-2428-12															
AT1A-2428-11															
AT1A-2428-10															
AT1A-2428-9															
AT1A-2428-8															
AT1A-2428-7															
AT1A-2428-6															
AT1A-2428-5															
AT1A-2428-4															
AT1A-2428-3															
AT1A-2428-2															
AT1A-2428-1															

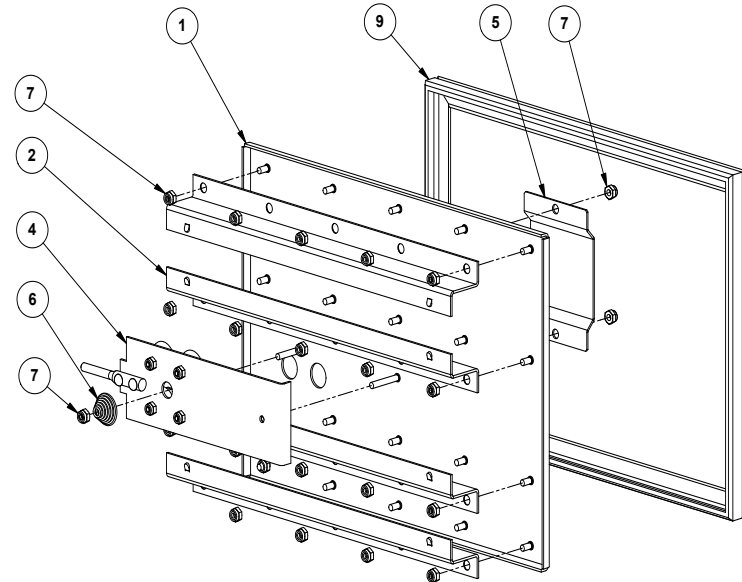
NOTE:
1. PUSH ITEMS 12, 13 AND 14 UP AGAINST THE DOOR
GASKET BEFORE TIGHTENING HOLD-DOWN NUTS.



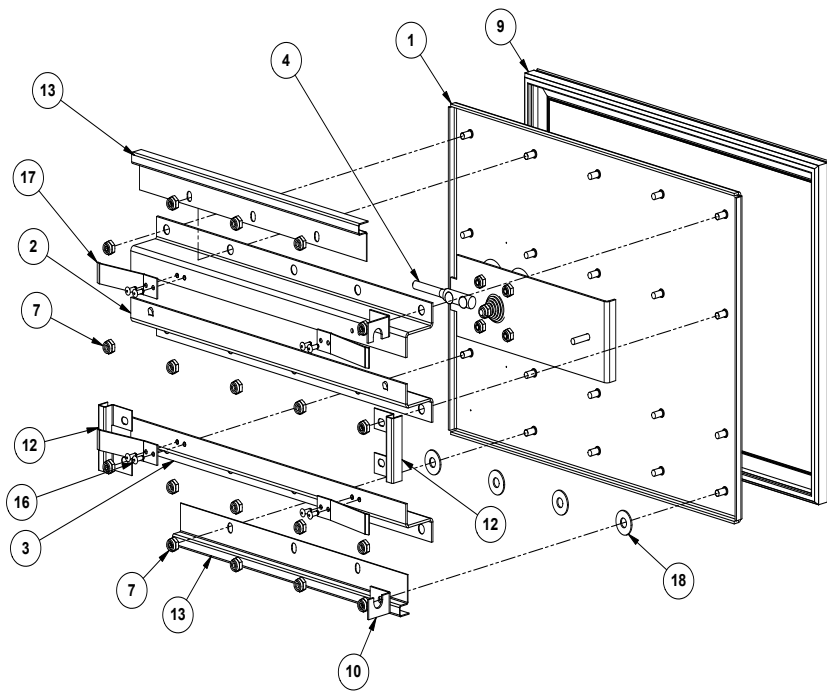
AT1A-2426-5
INNER DOOR ASSEMBLY 6 PAN RIGHT HAND
OTHERWISE SAME AS AT1A-2426-1



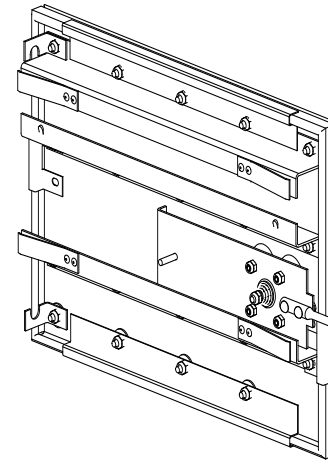
AT1A-2426-6
INNER DOOR ASSEMBLY 6 PAN LEFT HAND
OTHERWISE SAME AS AT1A-2426-5



AT1A-2426-2
INNER DOOR ASSEMBLY 3 PAN RIGHT HAND



AT1A-2426-7
INNER DOOR ASSEMBLY 3 PAN RIGHT HAND

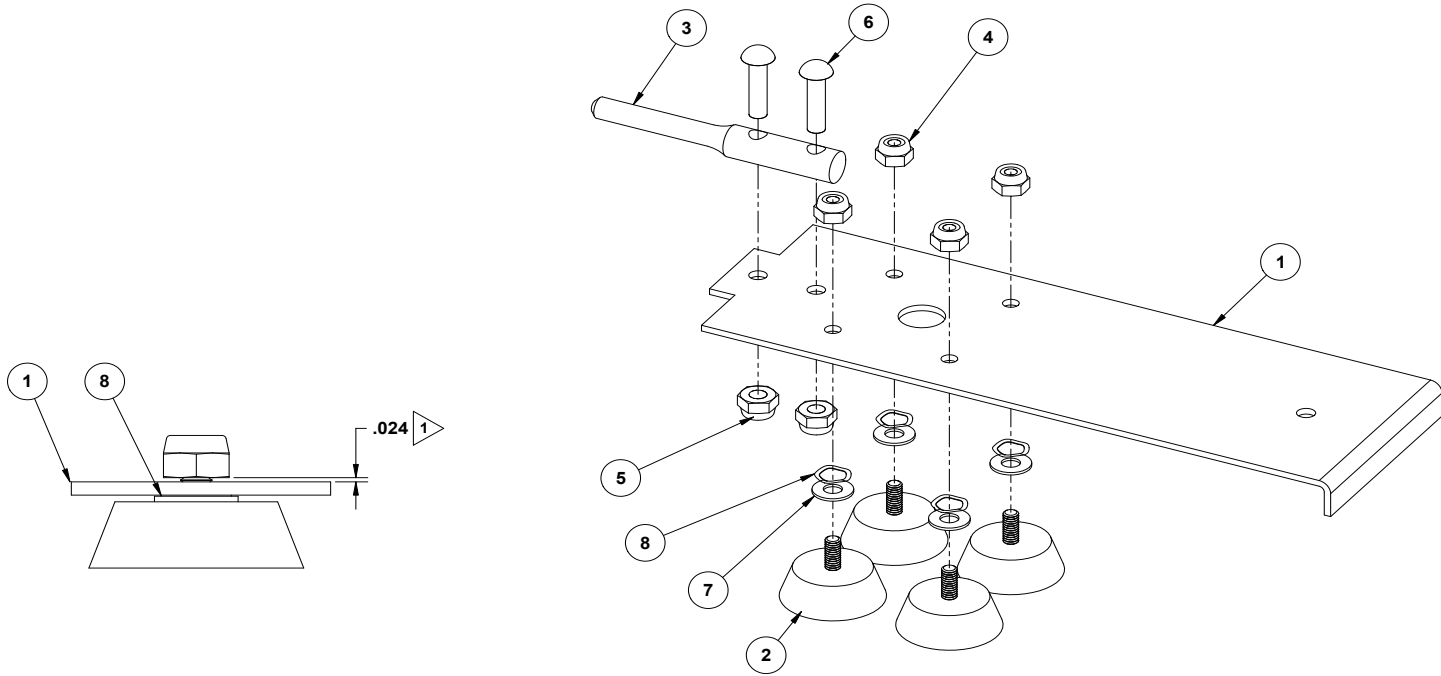


AT1A-2426-8
INNER DOOR ASSEMBLY 3 PAN LEFT HAND

 AccuTemp Products, Inc.
 3415 N. Clanton Park
 Fort Wayne, IN 46825
 Title: INNER DOOR ASSEMBLY
 QUICK RELEASE
 Drawing No.: AT1A-2426 Rev. F
 Sheet 3 of 3

NOTE:

1 WHEN ITEM #8 IS COMPRESSED, CLEARANCE UNDER ITEM #4 SHOULD BE .024"



AT1A-2427-1

4	AT0F-3668-1	8	WASHER, WAVE
4	AT0F-1052-43010	7	WASHER, #10 TYPE B CUSTOM
2	AT0F-2755-41060	6	SCREW, #10-24UNC X 3/4 PHILIPS ROUND HEAD MACHINE
2	AT0F-2691-41011	5	NUT, #10-24 WAXED NYLOC
4	AT0F-2691-31011	4	NUT, #8-32 WAXED NYLOC
1	AT1M-2734-1	3	DOOR PIN, QUICK RELEASE
4	AT1G-1830-1	2	SEAL, QUICK RELEASE DOOR
1	AT1M-2430-1	1	VALVE BRACKET, QUICK REL. DOOR
AT1A-2427-1/QTY.	PART NO.	ITEM	DESCRIPTION



AccuTemp Products, Inc.
8415 N. Clinton Park
Fort Wayne, IN 46825

VALVE BRACKET ASSY.

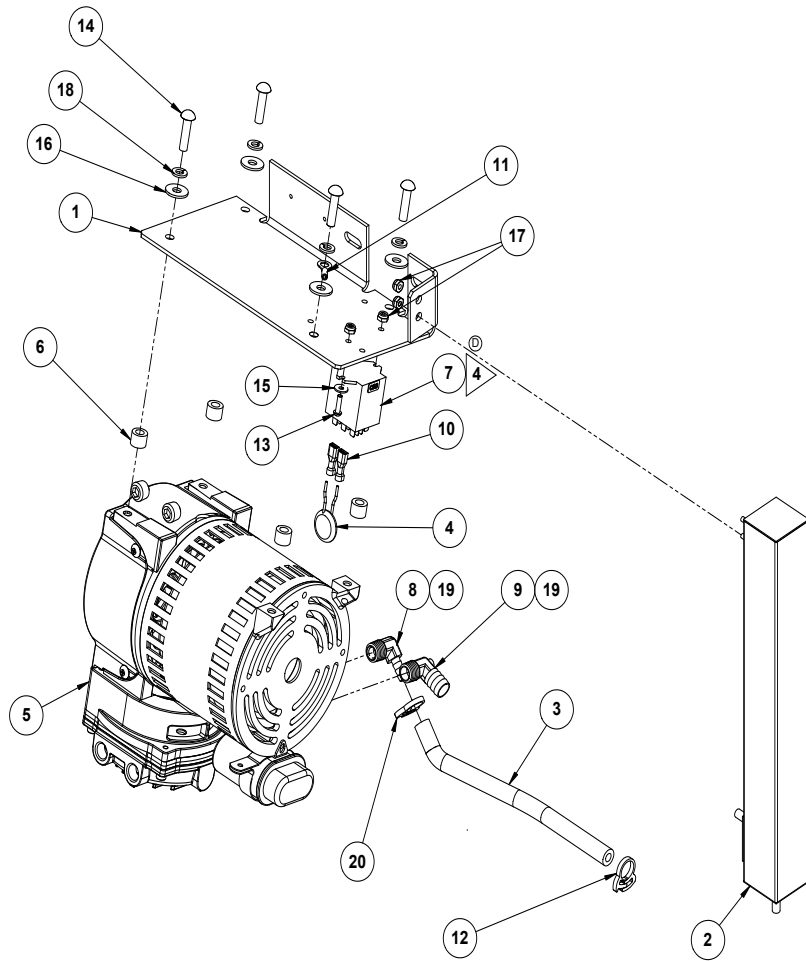
: Drawing No.:

AT1A-2427

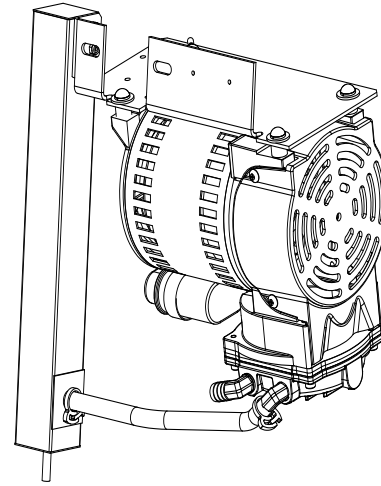
Rev.

D

Sheet 1 of 1



AT1A-3099-1 & AT1A-3099-2



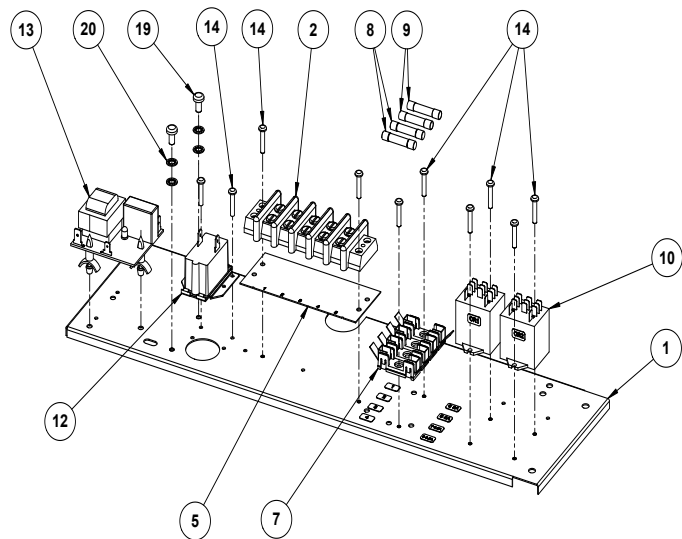
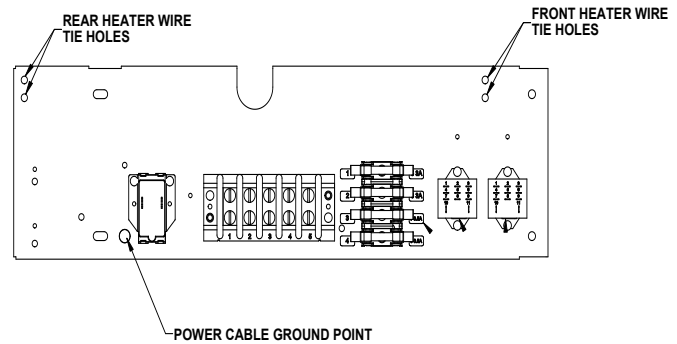
1	1	1	20	AT0P-2714-7	HOSE CLAMP .500+ O.D. HOSE
AR	AR	AR	19	AT0H-3102-1	PIPE THREAD SEALANT
4	4	18	AT0F-1922-50002	WASHER, 1/4" HELICAL SPRING LOCK	
4	4	17	AT0F-2691-21002	NUT, #6-32 NYLOC	
4	4	16	AT0F-1052-51002	WASHER 1/4 TYPE B PLAIN ZINC PLATED	
2	2	15	AT0F-1052-21002	WASHER #6 TYPE B PLAIN	
4	4	14	AT0F-2755-51082	SCREW, 1/4-20UNC X 1 PHILIPS ROUND HEAD MACHINE	
2	2	13	AT0F-2755-21042	SCREW, #6-32UNC x 1/2 PHILIPS ROUND HEAD MACHINE	
1	1	12	AT0P-2714-1	HOSE CLAMP 1/4" ID	
1	1	11	AT0E-2680-11	RING TERMINAL INSULATED 1/4 STUD 18-22 AWG	
2	2	10	AT0E-2699-4	QD TERMINAL FEMALE INSULATED 14-16 AWG .187 x .020 TAB	
1	1	9	AT0P-2628-2	ELBOW, 90° FITTING 1/4" NPTM TO 1/2" HOSE BARB	
1	1	8	AT0P-2628-1	ELBOW, 90° FITTING 1/4" NPTM TO 1/4" HOSE BARB	
-	-	7	AT0E-2825-2	GENERAL PURPOSE RELAY 240VAC	
1	1	7	AT0E-2825-4	GENERAL PURPOSE RELAY 208/240V	
4	4	6	AT1M-2664-1	SPACER, HEATER	
1	1	5	AT1E-2991-1	VACUUM PUMP, GAST	
1	1	4	AT0A-2736-1	MOV. TERMINALS ASSEMBLY	
1	1	3	AT1P-2555-32073	HOSE, SILICONE 1/4"ID X 7.75" LG	
1	1	2	AT1A-2984-1	SQUARE TUBE MUFFLER ASSEMBLY	
1	-	1	AT1M-2993-2	VACUUM PUMP BRKT, GAST	
-	1	1	AT1M-2993-1	VACUUM PUMP BRKT, GAST	
AT1A-3099-3					
AT1A-3099-2					
AT1A-3099-1					
		ITEM	PART NUMBER	DESCRIPTION	

OBsolete USE AT1A-3099-1

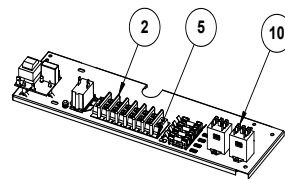

 AccuTemp Products, Inc.
 8415 N. Clinton Park
 Fort Wayne, IN 46825

Title: **ASSY, GAST VACUUM PUMP MUFFLER**
 Drawing No.: **AT1A-3099** Rev. **H**

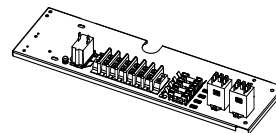
Sheet 1 of 1



AT1A-2992-1



AT1A-2992-4
OTHERWISE SAME AS AT1A-2992-1



AT1A-2992-5
OTHERWISE SAME AS AT1A-2992-4

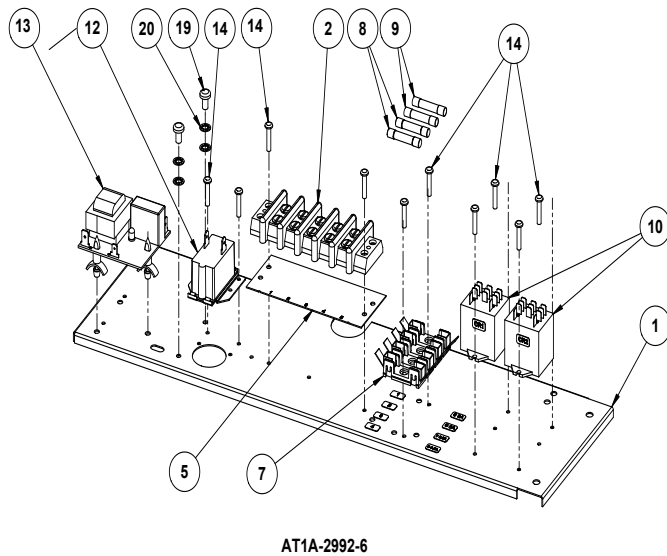
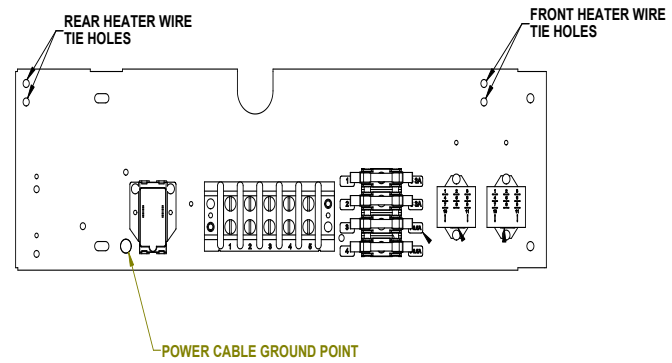
QTY	AT1A-2992-9	QTY	AT1A-2992-5	QTY	AT1A-2992-4	QTY	AT1A-2992-2	QTY	AT1A-2992-1	PART NUMBER	ITEM	DESCRIPTION
-	-	-	-	-	-	-	-	-	-	21		
2	4	1	2	-	-	-	-	-	-	ATOF-2666-40000	20	WASHER, #10 INTERNAL TOOTH LOCK
1	2	-	-	-	-	-	-	-	-	ATOF-3620-40032	19	SCREW, #10-32UNF X 3/8" SWAGEFORM PHILLIPS PAN HEAD
-	-	-	-	-	-	-	-	-	-		18	
-	-	-	-	-	-	-	-	-	-		17	
-	-	-	-	-	-	-	-	-	-		16	
-	-	-	-	-	-	-	-	-	-		15	
10	10	-	1	-	-	-	-	-	-	ATOF-3620-21052	14	SCREW, #6-32UNC X 5/8" SWAGEFORM PHILLIPS PAN HEAD
-	1	-	-	-	-	-	-	-	-	AT1E-2654-1	13	PCB, 208/240VAC WATER SENSOR
1	1	-	-	-	-	-	-	-	-	AT0E-2807-1	12	BUZZER
2	2	-	-	-	-	-	-	-	-	AT0E-2825-2	11	GENERAL PURPOSE RELAY 240VAC
2	2	-	-	-	-	-	-	-	-	AT0E-2825-4	10	GENERAL PURPOSE RELAY 208/240V
2	2	-	-	-	-	-	-	-	-	AT0E-2731-1	9	FUSE 3 AMP 250V
2	2	-	-	-	-	-	-	-	-	AT0E-3162-1	8	FUSE 1/2 AMP 250V FAST ACTING
1	1	-	-	-	-	-	-	-	-	AT0E-2708-2	7	3AG OMNI-BLOK FUSE BLOCK 4 POS
1	1	-	-	-	-	-	-	-	-	AT0E-3062-3	5	MARKER STRIP BARRIER BLOCK 6 POS
-	-	-	-	-	-	-	-	-	-	AT0E-3062-2	5	MARKER STRIP BARRIER BLOCK 5 POS
-	-	-	-	-	-	-	-	-	-		4	
1	1	-	-	-	-	-	-	-	-	AT0E-1134-6	2	6 POSITION TERMINAL BLOCK
-	-	-	-	-	-	-	-	-	-	AT0E-1134-5	2	5 POSITION TERMINAL BLOCK
1	1	1	1	1	1	1	1	1	1	AT1M-2990-1	1	COMPONENT PLATE

AccuTemp Products, Inc.
8415 N. Clinton Park
Fort Wayne, IN 46835

AccuTemp
THE COMPONENT BRACKET
ASSEMBLY STEAMER

Drawing No.: AT1A-2992 Rev. N

Sheet 1 of 2

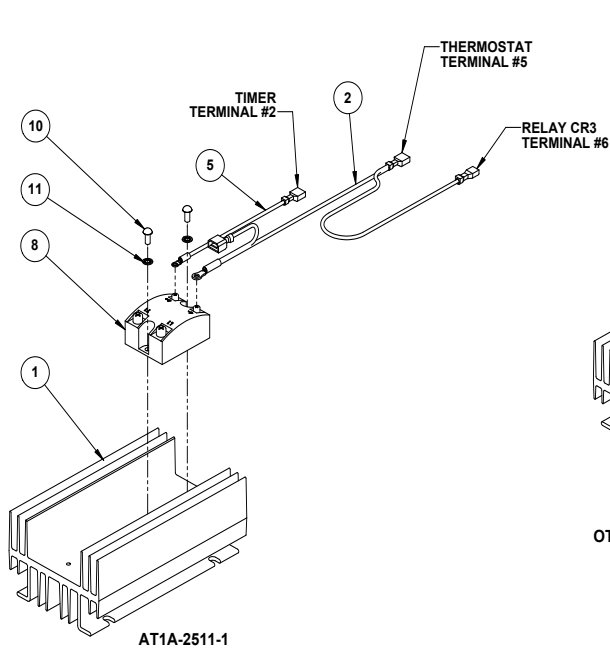


QTY	PART NUMBER	ITEM	DESCRIPTION
1	AT1M-2990-1	1	COMPONENT PLATE
2	AT0E-1134-5	2	5 POSITION TERMINAL BLOCK
3		3	
4		4	
5	AT0E-3062-2	5	MARKER STRIP BARRIER BLOCK 5 POS
6		6	
7	AT0E-2708-2	7	3AG OMNI-BLOK FUSE BLOCK 4 POS
8	AT0E-3162-1	8	FUSE 1/2 AMP 250V FAST ACTING
9	AT0E-2731-1	9	FUSE 3 AMP 250V
10	AT0E-2825-4	10	GENERAL PURPOSE RELAY 208/240V
11	AT0E-2825-2	11	GENERAL PURPOSE RELAY 240VAC
12	AT0E-2807-1	12	BUZZER
13	AT1E-2654-1	13	PCB, 208/240VAC WATER SENSOR
14	AT0F-3620-21052	14	SCREW, #6-32UNC X 5/8" SWAGEFORM PHILLIPS PAN HEAD
15		15	
16		16	
17		17	
18		18	
19	AT0F-3620-40032	19	SCREW, #10-32UNF X 3/8" SWAGEFORM PHILLIPS PAN HEAD
20	AT0F-2666-40000	20	WASHER, #10 INTERNAL TOOTH LOCK
21		21	

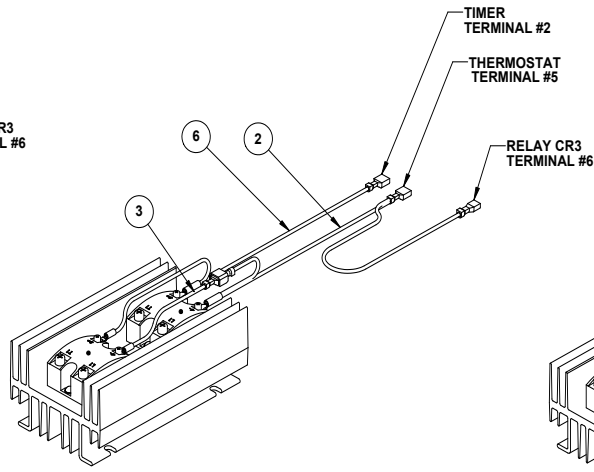
OBsolete - USE AT1A-2992-5
OBsolete - USE AT1A-2992-4
OBsolete - USE AT1A-2992-4

AccuTemp Products, Inc.
 8415 N. Clinton Park
 Fort Wayne, IN 46825

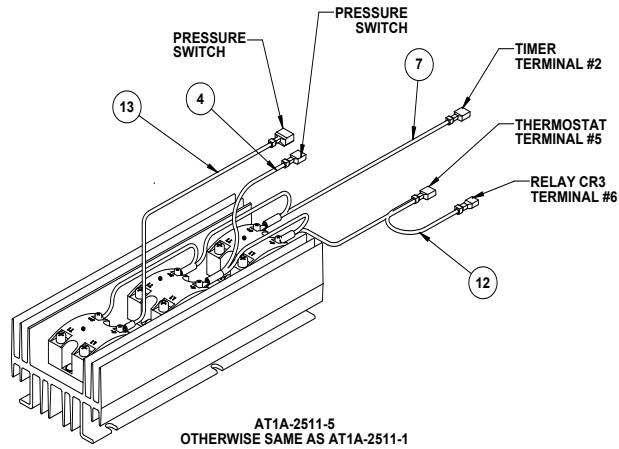
Title: COMPONENT BRACKET ASSEMBLY STEAMER
 Drawing No: AT1A-2992 Rev: N
 Sheet 2 of 2



AT1A-2511-2
OTHERWISE SAME AS AT1A-2511-1



AT1A-2511-3
OTHERWISE SAME AS AT1A-2511-1



AT1A-2511-5
OTHERWISE SAME AS AT1A-2511-1

NOTES:
① FOR SSR WITHOUT INTEGRAL HEAT SINK PAD, ADD AT0E-2996-1 PAD, SSR HEAT SINK OR HEAT SINK COMPOUND.

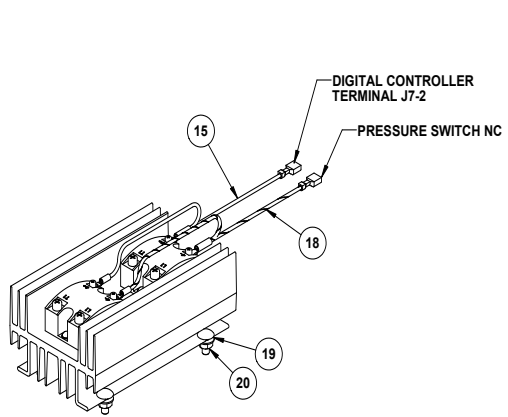
4	4	4	-	-	-	-	AT0F-1017-51002	20	NUT, 1/4-20UNC HEX SERRATED
4	4	4	-	-	-	-	AT0F-1921-51051	19	BOLT, 316SS 1/4-20 UNC 2A X 5/8" CARRIAGE
-	1	-	-	-	-	-	AT0A-1454-13	18	WIRE HARNESS ASSY, TRIPLE SSR WHT/BRN
-	-	1	-	-	-	-	AT0A-1454-12	17	WIRE HARNESS ASSY, SINGLE SSR WHT/BRN
1	-	-	-	-	-	-	AT0A-1454-11	16	WIRE HARNESS ASSY, TRIPLE SSR WHT/BRN
-	1	-	-	-	-	-	AT0A-1454-10	15	WIRE HARNESS ASSY, DOUBLE SSR ORANGE
-	-	1	-	-	-	-	AT0A-1454-9	14	WIRE HARNESS ASSY, SINGLE SSR ORN
-	-	-	1	-	-	-	AT0A-1454-8	13	WIRE HARNESS ASSY
-	-	-	1	-	-	-	AT0A-1454-7	12	WIRE HARNESS ASSY
6	4	2	6	6	4	2	AT0F-2666-30000	11	WASHER, #8 INTERNAL TOOTH LOCK
6	4	2	6	6	4	2	AT0F-2755-31030	10	SCREW, #8-32UNC X 3/8 PHILIPS ROUND HEAD MACHINE
								9	
3	2	1	3	3	2	1	AT0E-2059-3	8	RELAY, SOLID STATE
1	-	-	1	1	-	-	AT0A-1454-6	7	WIRE HARNESS ASSY, TRIPLE SSR ORANGE
-	-	-	-	-	1	-	AT0A-1454-5	6	WIRE HARNESS ASSY, DOUBLE SSR ORANGE
-	-	-	-	-	-	1	AT0A-1454-4	5	WIRE HARNESS ASSY, SINGLE SSR ORN
-	-	-	1	1	-	-	AT0A-1454-3	4	WIRE HARNESS ASSY, TRIPLE SSR WHT/BRN
-	-	-	-	-	1	-	AT0A-1454-2	3	WIRE HARNESS ASSY, DOUBLE SSR WHT/BRN
-	-	-	1	1	1	-	AT0A-1454-1	2	WIRE HARNESS ASSY, ALL SSR WHT/BRN
1	-	1	1	-	-	-	AT0E-2206-2	1	HEAT SINK, 10.50" LONG
-	1	1	-	-	1	1	AT0E-2206-1	1	HEAT SINK, 7.00" LONG
QTY AT1A-2511-8	QTY AT1A-2511-7	QTY AT1A-2511-6	QTY AT1A-2511-5	QTY AT1A-2511-3	QTY AT1A-2511-2	QTY AT1A-2511-1	PART NO.	ITEM	DESCRIPTION

AccuTemp Products, Inc.
8415 N. Clinton Park
Fort Wayne, IN 46825

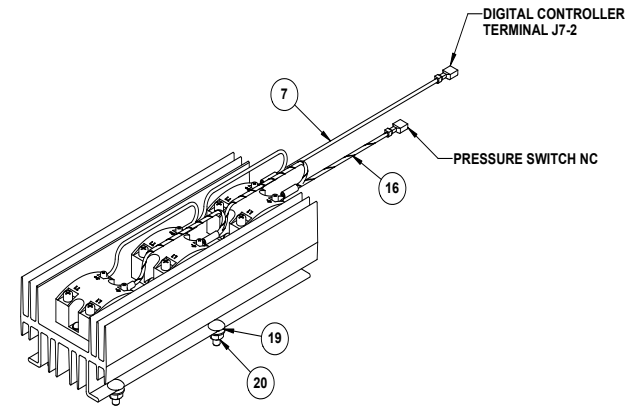
Title: HEAT SINK ASSY
Drawing No.:
Rev.:

AT1A-2511 F

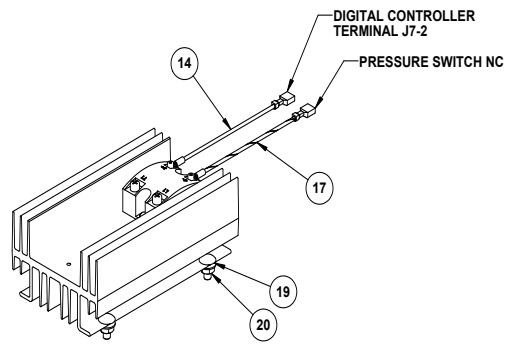
Sheet 1 of 2



AT1A-2511-7
OTHERWISE SAME AS AT1A-2511-2



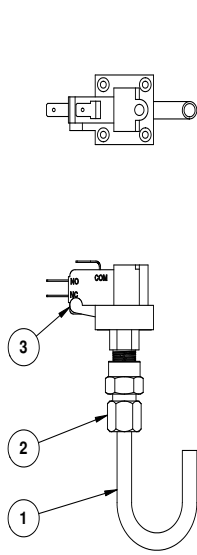
AT1A-2511-8
OTHERWISE SAME AS AT1A-2511-3



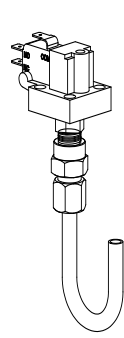
AT1A-2511-6
OTHERWISE SAME AS AT1A-2511-1



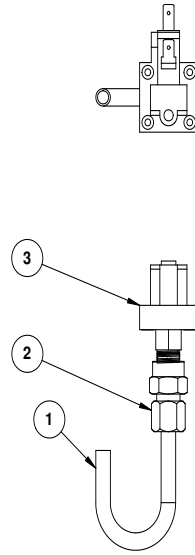
Title: HEAT SINK ASSY
Drawing No.: AT1A-2511
Rev: F
Sheet 2 of 2



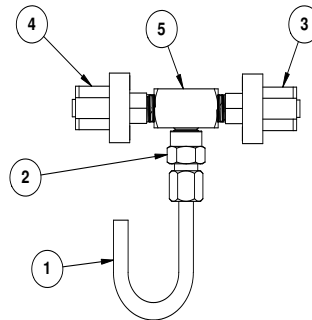
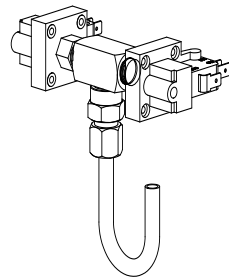
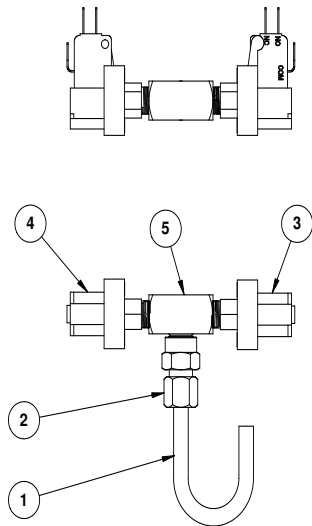
AT1A-3295-1



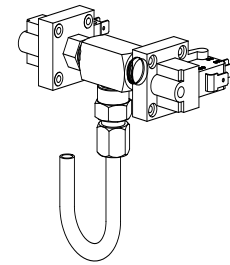
AT1A-3295-2




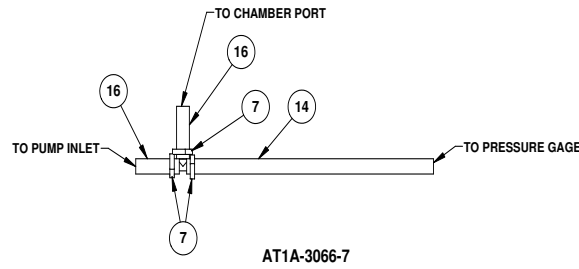
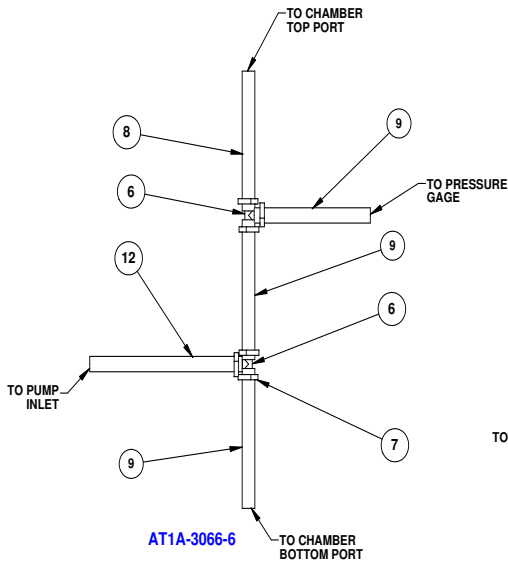
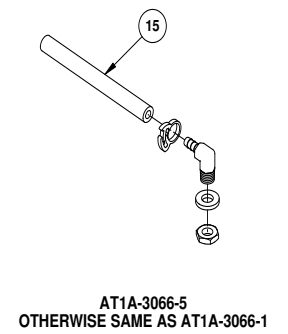
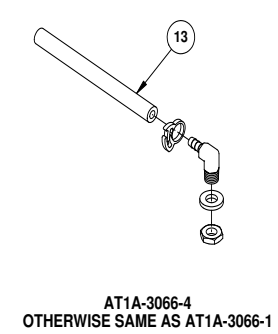
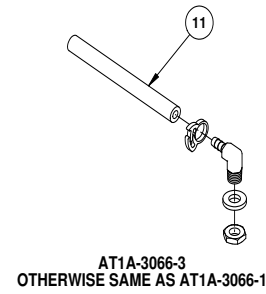
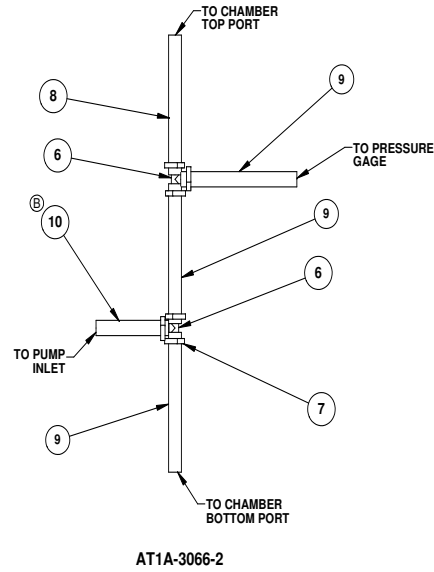
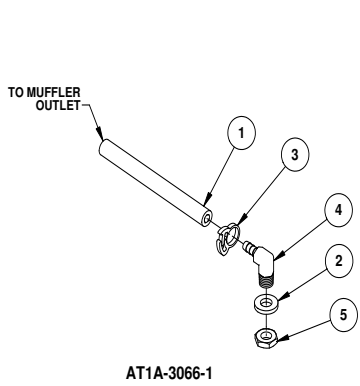
AT1A-3295-4



QTY	AR	AR	AR	AR	ATOP-3063-1	6	1/4" TEFLON TAPE
1	1	-	-	-	ATOP-2858-2	5	TEE MALE BRANCH
1	1	-	-	-	AT1E-2647-2	4	PRESSURE SWITCH, HIGH
1	1	1	1	1	AT1E-2647-1	3	PRESSURE SWITCH, LOW
1	1	1	1	1	ATOP-3293-1	2	COMPRESSION FITTING TO FEMALE NPT
1	1	1	1	1	AT1P-3297-1	1	TUBING, PRESSURE SWITCH
QTY	AR	AR	AR	AR	PART NUMBER	ITEM	DESCRIPTION
1	1	1	1	1	AT1A-3295-4		
1	1	1	1	1	AT1A-3295-3		
1	1	1	1	1	AT1A-3295-2		
1	1	1	1	1	AT1A-3295-1		




 AccuTemp Products, Inc.
 8415 N. Clinton Park
 Fort Wayne, IN 46825
 Title: **PRESSURE SWITCH ASSEMBLY**
 Size: Drawing No.:
AT1A-3295 Rev. -



**NOTE: ALL HOSES ARE ORDERD BY THE FOOT
USE THE FOLLOWING TO ORDER:
For 1/2" Dia - ATOP-3833-63000
For 1/4" Dia - AT1P-2555-32000**

									ATOP-3833-63030	16	SILICONE HOSE, 1/2"ID X 3" LG
		1							AT1P-2555-32122	15	HOSE, SILICONE 1/4"ID X 12.5" LG
1									ATOP-3833-63170	14	HOSE, SILICONE 1/2"ID X 17" LG
			1						AT1P-2555-32170	13	HOSE, SILICONE 1/4"ID X 17" LG
	1								ATOP-3833-63102	12	SILICONE HOSE, 1/2"ID X 10.5" LG
				1					AT1P-2555-32230	11	HOSE, SILICONE 1/4"ID X 23" LG
					1				ATOP-3833-63050	10	HOSE, SILICONE 1/2"ID X 5" LG
	3				3				ATOP-3833-63080	9	HOSE, SILICONE 1/2"ID X 8" LG
	1				1				ATOP-3833-63060	8	HOSE, SILICONE 1/2"ID X 6" LG
3	6				6				ATOP-2714-5	7	HOSE CLAMP 1/2" ID
1	2				2				ATOP-2987-2	6	BARBED TEE FITTING, 1/2 X 1/2 X 1/2
		1	1	1	1				ATOP-2868-1	5	PIPE LOCK NUT
		1	1	1		1			ATOP-2628-3	4	ELBOW, 90° FITTING 1/8" NPTM TO 1/4" HOSE BARB
		1	1	1			1		ATOP-2714-7	3	HOSE CLAMP .500+ O.D. HOSE
		1	1	1					ATOF-2869-1	2	FLAT WASHER
								1	AT1P-2555-32240	1	HOSE, SILICONE 1/4"ID X 24" LG
AT1A-3066-7	AT1A-3066-6	AT1A-3066-5	AT1A-3066-4	AT1A-3066-3	AT1A-3066-2	AT1A-3066-1	PART NUMBER	ITEM			DESCRIPTION

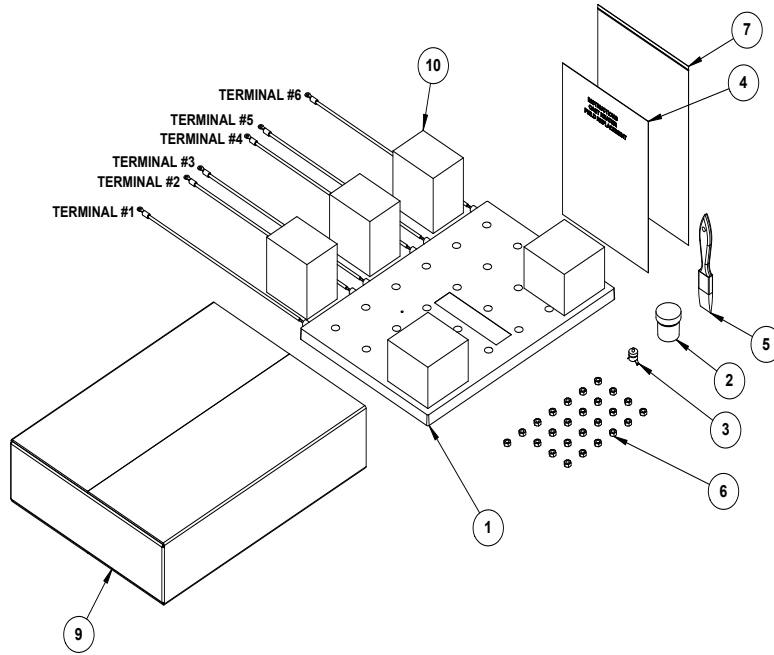


AccuTemp Products, Inc.
8415 N. Clinton Park
Fort Wayne, IN 46825

Title: HOSE ASSEMBLY
Size: Drawing No: AT1A-3066 Rev. J

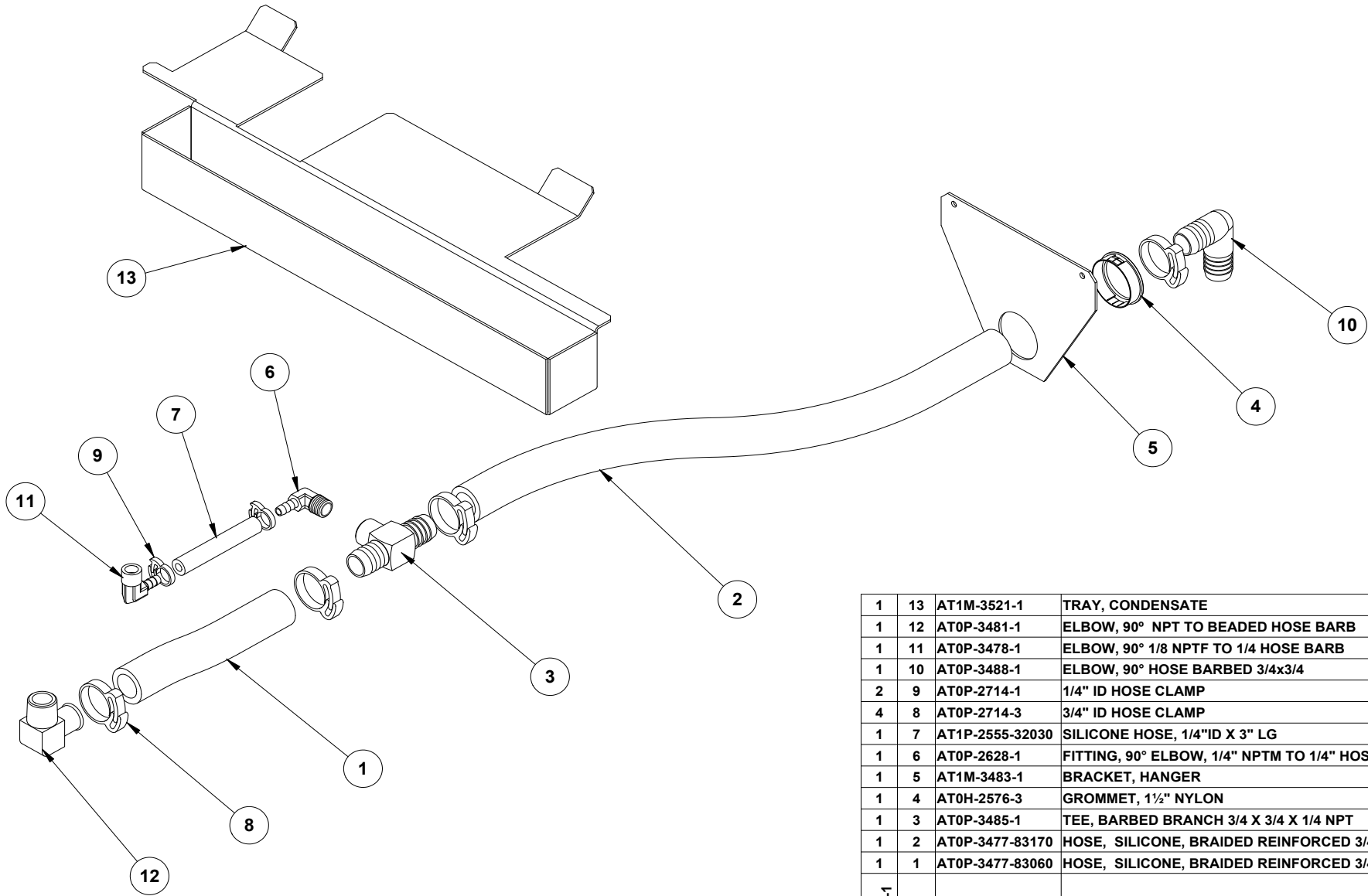
Sheet 1 of 1

PART NUMBER	RATED VOLTAGE / WATTAGE							
	208V 6.0KW	230V 7.3KW	240V 8.0KW	380V 6.7KW	400V 7.4KW	415V 8.0KW	440V 9.0KW	480V 10.7KW
AT1A-3530-1			240V 6.0KW					
AT1A-3530-2			240V 10.7KW	380V 9.0KW	400V 10.0KW	415V 10.7KW		480V 14.0KW
AT1A-3530-3	208V 8.0KW			380V 13.0KW				
AT1A-3530-4	208V 12.0KW		240V 16.0KW		400V 14.8KW	415V 16.0KW	440V 18.0KW	
AT1A-3530-5			240V 13.0KW [®]					
AT1A-3530-6	208V 10.0KW							
AT1A-3530-7	208V 17.0KW							
AT1A-3530-8	208V 15.0KW							



5	5	5	5	5	5	5	5	5	10	AT0S-3535-1	PLANK FOAM	
1	1	1	1	1	1	1	1	1	9	AT0S-3533-1	BOX, CARDBOARD	
AR	AR	AR	AR	AR	AR	AR	AR	AR	8	AT0S-2770-1	FOAM OR BUBBLE WRAP	
1	1	1	1	1	1	1	1	1	7	AT0H-2782-2	BAG, 9 X 12 RECLOSABLE	
25	25	25	25	25	25	25	25	25	6	AT0F-3401-1	NUT, SPECIAL LOCKING 1/4-20UNC-2B	
1	1	1	1	1	1	1	1	1	5	AT0H-3532-1	PAINT BRUSH	
1	1	1	1	1	1	1	1	1	4	AT1T-3534-1	INSTRUCTIONS, CAST HEATER FIELD REPLACEMENT	
1	1	-	1	-	-	-	-	-	3	AT1E-2653-4	OVERTEMP SWITCH	
-	-	1	-	1	1	1	1	1	3	AT1E-2653-3	OVERTEMP SWITCH	
1	1	1	1	1	1	1	1	1	2	AT0H-3412-2	WAKEFIELD 120 THERMAL JOINT COMPOUND	
1	-	-	-	-	-	-	-	-	1	AT1A-3531-8	CAST HEATER ASSEMBLY	
-	1	-	-	-	-	-	-	-	1	AT1A-3531-7	CAST HEATER ASSEMBLY	
-	-	1	-	-	-	-	-	-	1	AT1A-3531-6	CAST HEATER ASSEMBLY	
-	-	-	1	1	-	-	-	-	1	AT1A-3531-4	CAST HEATER ASSEMBLY	
-	-	-	-	-	1	-	-	-	1	AT1A-3531-3	CAST HEATER ASSEMBLY	
-	-	-	-	-	-	1	-	-	1	AT1A-3531-2	CAST HEATER ASSEMBLY	
-	-	-	-	-	-	-	1	-	1	AT1A-3531-1	CAST HEATER ASSEMBLY	
QTY	QTY	QTY	QTY	QTY	QTY	QTY	QTY	QTY	QTY	ITEM	PART NUMBER	DESCRIPTION
AT1A-3530-8	AT1A-3530-7	AT1A-3530-6	AT1A-3530-5	AT1A-3530-4	AT1A-3530-3	AT1A-3530-2	AT1A-3530-1					


 AccuTemp Products, Inc.
 9416 N. Clinton Park
 Fort Wayne, IN 46825
 Title: **CAST HEATER REPLACEMENT KIT**
 Drawing No.: **AT1A-3530**
 Rev. **B**
 Sheet 1 of 1



AT1A-3463-1

QTY.	ITEM	PART NUMBER	DESCRIPTION
1	13	AT1M-3521-1	TRAY, CONDENSATE
1	12	AT0P-3481-1	ELBOW, 90° NPT TO BEADED HOSE BARB
1	11	AT0P-3478-1	ELBOW, 90° 1/8 NPTF TO 1/4 HOSE BARB
1	10	AT0P-3488-1	ELBOW, 90° HOSE BARBED 3/4x3/4
2	9	AT0P-2714-1	1/4" ID HOSE CLAMP
4	8	AT0P-2714-3	3/4" ID HOSE CLAMP
1	7	AT1P-2555-32030	SILICONE HOSE, 1/4"ID X 3" LG
1	6	AT0P-2628-1	FITTING, 90° ELBOW, 1/4" NPTM TO 1/4" HOSE BARB
1	5	AT1M-3483-1	BRACKET, HANGER
1	4	AT0H-2576-3	GROMMET, 1/2" NYLON
1	3	AT0P-3485-1	TEE, BARBED BRANCH 3/4 X 3/4 X 1/4 NPT
1	2	AT0P-3477-83170	HOSE, SILICONE, BRAIDED REINFORCED 3/4" IDx17" LG
1	1	AT0P-3477-83060	HOSE, SILICONE, BRAIDED REINFORCED 3/4" IDx6" LG



KIT, STEAMER DRAIN

: Drawing No.: **AT1A-3463** Rev. **B**

Sheet 1 of 1

PART NUMBER	DESCRIPTION	MODEL	PAGE
Buzzers			
AT0E-2807-1	Buzzer, Timer/Low Water	S3 & S6	29-30
Door	Quick Release Door -Current Production		
AT1A-2912-1	S6 Door Replacement - Right Hinged	S6	22
AT1A-2912-2	S3 Door Relacement - Right Hinged	S3	22
AT1A-2912-3	S6 Door Replacement - Left Hinged	S6	22
AT1A-2912-4	S3 Door Relacement - Left Hinged	S3	22
AT1A-2912-7	S6 Door Replacement - Right Hinged Hold Open	S6	22
AT1A-2912-8	S6 Door Replacement - Left Hinged Hold Open	S6	22
AT1A-2912-9	S3 Door Replacement - Right Hinged Hold Open	S6	22
AT1A-2912-10	S3 Door Replacement - Left Hinged Hold Open	S6	22
AT1A-2426-5	S6 Floating Inner Door - Right Hinged	S6	24-26
AT1A-2426-6	S6 Floating Inner Door - Left Hinged	S6	24-26
AT1A-2426-7	S3 Floating Inner Door- Right Hinged	S3	24-26
AT1A-2426-8	S3 Floating Inner Door- Left Hinged	S3	24-26
AT1A-2427-1	Valve Bracket Assy- (w/cups & rod)	S3 & S6	24-26
AT1A-2644-2	Quick Release Door handle	S3 & S6	23
AT1G-1830-1	Seal, QRD Suction Cup	S3 & S6	29
AT1H-2046-1	QRD, Spring Compression	S3 & S6	24-26
AT1M-3045-1	QRD Valve Cover	S3 & S6	24-26
AT1M-3046-1	QRD Latch Backer Plate -RH	S3 & S6	23
AT1M-3046-2	QRD Latch Backer Plate -LH	S3 & S6	23
AT1H-2058-3	Door Hinge (Pair)	S3 & S6	23
AT0F-2691-41011	Nut, 10-24 Waxed Nyloc	S3 & S6	23
AT0F-2061-41160	Screw, 10-24x13/4" Flat Hd Machine	S3 & S6	23
AT0F-2061-41140	Screw, 10-24x3/4" Flat Hd Machine	S3 & S6	23
Door Gasket			
AT1G-2633-1	Gasket, Door S6 - Six Pan	S3 & S6	24-26
AT1G-2633-2	Gasket, Door S3 - 3 Pan	S3 & S6	24-26
RAT1K-1830	QRD Valve Plate Seal Kit	S3 & S7	Not Shown
Fittings/Screws			
AT0F-2691-41011	Nyloc Nut, Serrated hex #10-24	S3 & S6	24
AT0F-2875-51050	Screw 1/4-20UNC x 5/8 Hex Head Machine Screw	S3 & S6	21
AT0F-2875-51052	Screw 1/4-20UNC x 5/8 Hex Head Machine Screw	S3 & S6	14
AT0F-1922-5000	Washer, 1/4" Helical Coil (Drain Pan Bracket)	S3 & S6	21
AT0P-2987-2	Nylon Tee - Barbed 1/2x1/2x1/2	S3 & S6	34
AT0F-1046-31030	Truss Screws#8 x 3/8 SS	S3	14,15
AT0F-2777-31030	Screw, Self Tapping Truss Head 3/8"	S6	16,19
AT1P-2239-1	Ball Valve (drain)	S3 & S6	14,16,19

PART NUMBER	DESCRIPTION	MODEL	PAGE
Fuses			
AT0E-3162-1	Fuse, Slo-Blo 1/2 Amp	S3 & S6	29-30
AT0E-2731-1	Fuse, Slo-Blo 3 Amp	S3 & S6	29-30
Gauges			
AT1A-3303-1	2" Thermometer Assembly	S3 & S6	9-10
AT0H-2614-1	2 " Vacuum Gauge Assembly	S3 & S6	9-10
AT0H-3544-1	2" Lens Cover for Thermometer and Vacuum Gauge	S3 & S6	Not Shown
Heaters			
AT1A-3530-1	Cast Heater Kit; 208v 6kw, 230/7.3, 240/8, 380/6.7, 400/7.4, 415/8, 440/9, 480/10.7	S3 & S6	35
AT1A-3530-2	Cast Heater Kit; 240k/6kw	S3 & S6	35
AT1A-3530-3	Cast Heater Kit; 208v/8kw, 240/10.7, 380/9, 400/10, 415/10.7, 480/14	S3 & S6	35
AT1A-3530-4	Cast Heater Kit; 208v/12.0kw, 240/16, 380/13, 400/14.8, 415/16, 440/18	S3 & S6	35
AT1A-3530-6	Cast Heater Kit; 208v 10.0kw	S3 & S6	35
AT1A-3530-7	Cast Heater Kit; 208v 17.0kw	S3 & S6	35
Hoses			
AT0P-2714-1	Hose Clamp 1/4	S3 & S6	28,34
AT0P-2714-2	Hose Clamp 1/2	S3 & S6	34
AT1P-2555-32000	1/4" Silicone Hose - per ft'	S3 & S6	34
AT1P-2555-2	1/2" Silicone Hose - per ft'	S3 & S6	34
Lamps			
AT0E-1800-5	Pilot Lamp Unit, 208/240V (Red)	S6	9-10
AT0E-1800-4	Pilot Lamp Unit, 208/240V (Green)	S6	9-10
AT0E-1800-6	Pilot Lamp Unit, 208/240V (Amber)	S6	9-10
AT0E-1800-9	Pilot Lamp Unit, 208/240V (Clear)	S6	9-10
Legs			
AT0H-3040-1	Rubber Foot Tip (Cooker)	S3 & S6	21
Misc. Electronic			
AT0A-2736-1	MOV Terminal Assembly	S3 & S6	28
AT0A-2736-2	MOV Terminal Assembly	S3 & S7	11-13
AT0A-2736-4	MOV Terminal Assembly	S3 & S8	11-13
Misc. Hardware			
AT1M-2590-1	Bracket, Interior Tray Left	S6	16,20
AT1M-2590-1	Bracket, Interior Tray Right	S6	16,20
AT1A-2548-1	Assembly, Pan Rack	S3	14,15
AT1M-2872-1	Drain Pan Bracket	S3 & S6	21
Overlay			
AT1L-2804-1	Overlay, 90M Timer and External Thermostat	S6	9-10
AT1L-2804-2	Overlay, 90M Timer and Internal Thermostat	S6	9-10
AT1L-2804-3	Overlay, 180M Timer and External Thermostat	S6	9-10
AT1L-2804-5	Overlay, 180 Minute Timer	S6	9-10

PART NUMBER	DESCRIPTION	MODEL	PAGE
Overlays continued			
AT1L-2575-1	Overlay, 90 Minute Timer and External Thermostat	S3	9-10
AT1L-2575-2	Overlay, 90 Minute Timer and Internal Thermostat	S3	9-10
AT1L-2529-1	Overlay, Instructions	S3 & S6	9-10
Overtemp			
AT1E-2653-3	Overtemp - Cast Heater Only	S3 & S6	11,13,35
AT1E-2653-4	Overtemp - Cast Heater Only 14KW & Above	S3 & S6	11,13,35
PCB			
AT1E-2593-1	Light Control Board S/N 35389 & Below	S3	9-10
Power Cords			
AT0E-1051-2	Plug - NEMA 15-50P	S3 & S6	11-13
AT0E-1051-3	Plug - NEMA L6-30P		11-13
AT0E-1051-4	Plug - NEMA 15-30P		11-13
AT0E-1051-5	Plug - NEMA L16-20P		11-13
AT0E-1051-6	Plug - NEMA 6-50 P		11-13
AT0E-1051-7	Plug - NEMA L16-30P		11-13
Relays			
AT0E-2059-3	Solid State Relay, (D & A2450)	S3 & S6	31
AT0E-2996-1	Heat Pad - SSR	S3 & S6	31
AT0E-1587-1	Contact, 3 Pole 208/240	S3 & S6	14-16,19
AT0E-2825-4	Control Relay, 208V/240V 3PDT (Replaces -1,-2 & -3)	S3 & S6	29-30
Sheet Metal			
AT1M-2516-1	Top Shell	S3	14-15
AT1M-2603-1	Assy, Bottom Shell	S3	11-12
AT1M-2979-1	Exterior Shell, Steamer - 6 Pan - Internal Muffler	S6	11,13
AT1M-2979-2	Exterior Shell, Steamer - 6 Pan 14 KW and above - Internal Muffler	S6	11,13
AT1M-2891-1	Side Panel - 6 Pan, Right	S6	16,19
AT1A-3409-1	Bottom Shell, 6 Pan Steamer	S6	16,19
AT1M-2981-2	Side Panel - 6 Pan, Left	S6	16,19
Switches			
AT0E-2874-2	Toggle Switch - Fast Cook/Thermostat	S6	12-13
AT1E-2647-1	Pressure Switch - Single Pressure Switch	S3 & S6	33
AT1E-2647-2	Pressure Switch - Dual Pressure Switch -14 KW and above	S3 & S6	33
AT0E-3336-2	Operator, AB Rotary Switch	S3	9-10
AT0E-3337-1	On Pushbutton, Steamer	S6	9-10
AT0E-3337-2	Off Pushbutton, Steamer	S3 & S6	9-10
AT0E-3338-1	On Contact, Steamer	S3 & S6	9-10
AT0E-3338-2	Off Contact, Steamer	S3 & S6	9-10
AT0E-3339-1	Pushbutton Lock Ring	S3 & S6	9-10

PART NUMBER	DESCRIPTION	MODEL	PAGE
Timers			
AT0E-2297-1	Timer, 90 Minute	S3 & S6	9-10
AT0E-2297-2	Timer, 180 Minute	S3 & S6	9-10
AT0H-1455-2	Thermostat/Timer Repl. Knob-soft grip	S3 & S6	9-10
Thermocouples			
AT0E-3386-1	Thermocouple	S3 & S6	6,9,11-12
Thermostats			
AT0E-2559-2	AC Thermostat, Calibrated (100-200 F)	S3 & S6	9-10
Transformer			
AT0E-2662-1	Transformer - for 440/480V	S3 & S6	11-13
Vacuum Pump			
AT1E-27403-1	Thomas Vacuum Pump	S3 & S6	28
ATR-CAP	Capcitor-Thomas	S3&S6	Not Shown
ATR-THA2	Thomas Head	S3&S6	Not Shown
ATR-VP2RA	Thomas Rod & Diaphragm Assembly	S3&S6	Not Shown
ATR-VG	Vacuum Pump Leaf Valve	S3&S6	Not Shown
AT0H-2829-1	Thomas Pump EPDM Diaphragm	S3&S6	Not Shown
AT0H-3828-1	Thomas Pump Teflon Diaphragm Liner	S3&S6	Not Shown
AT0F-3827-30031	Thomas Retainer Screw-Dri-Loc	S3&S6	Not Shown
Water Sensor			
AT1E-2652	Probe Water Sensor	S3 & S6	14-15,16,19
AT1E-2654-1	PCB, Water Board Sensor S/N 34205 & Below	S3 & S6	14-15,16,19
AT1E-3230-1	PCB, Water Board Sensor S/N 34206 & Above & All Auto-Fill Models	S3 & S6	14-15,16,19



TECHNICAL SERVICES	
OFFICE	800.480.0415
FAX	260.469.3045
PARTS FAX	260.493.8914
EMAIL	service@accutemp.net
WEB SITE	www.accutemp.net