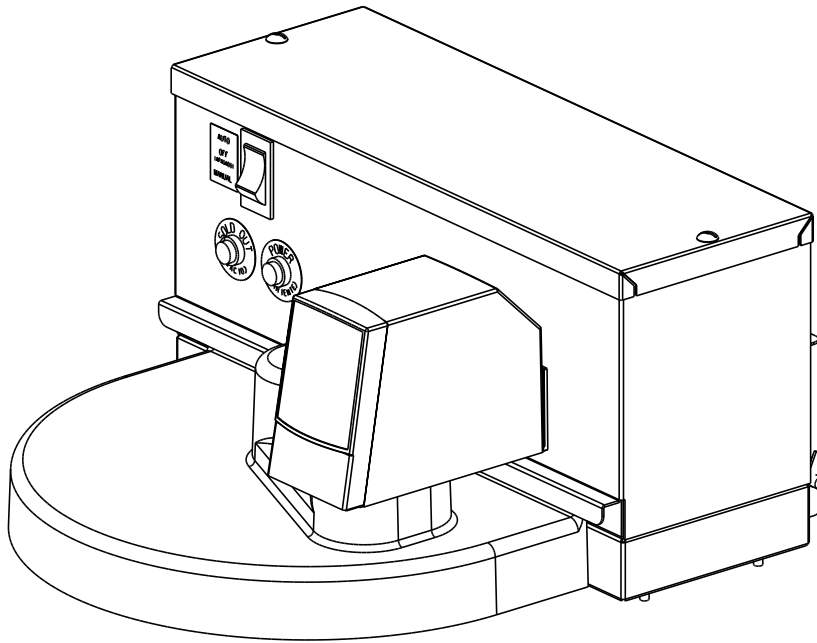


# INSTALLATION AND SERVICE MANUAL FOR LANCER *LEV*® FILL STATION (LFS) (PN 85-0087)



*Please refer to the Lancer web site ([www.lancercorp.com](http://www.lancercorp.com)) for information relating to Lancer Installation and Service Manuals, Instruction Sheets, Technical Bulletins, Service Bulletins, etc.*

## **NOTICE TO USERS:**

**THIS DISPENSER UNIT IS INTENDED FOR IN-DOOR USE ONLY.**

**THIS MANUAL IS AN INITIAL ISSUE.**

**LANCER**

6655 LANCER BLVD. • SAN ANTONIO, TEXAS 78219 USA • (210) 310-7000

### **FAX SALES**

USA-CANADA – 210-310-7250 • LATIN AMERICA – 210-310-7245 • ASIA – 210-310-7242  
EUROPE – 32-2-755-2399 • PACIFIC – 61-8-8268-1978

FAX ENGINEERING: • 210-310-7096

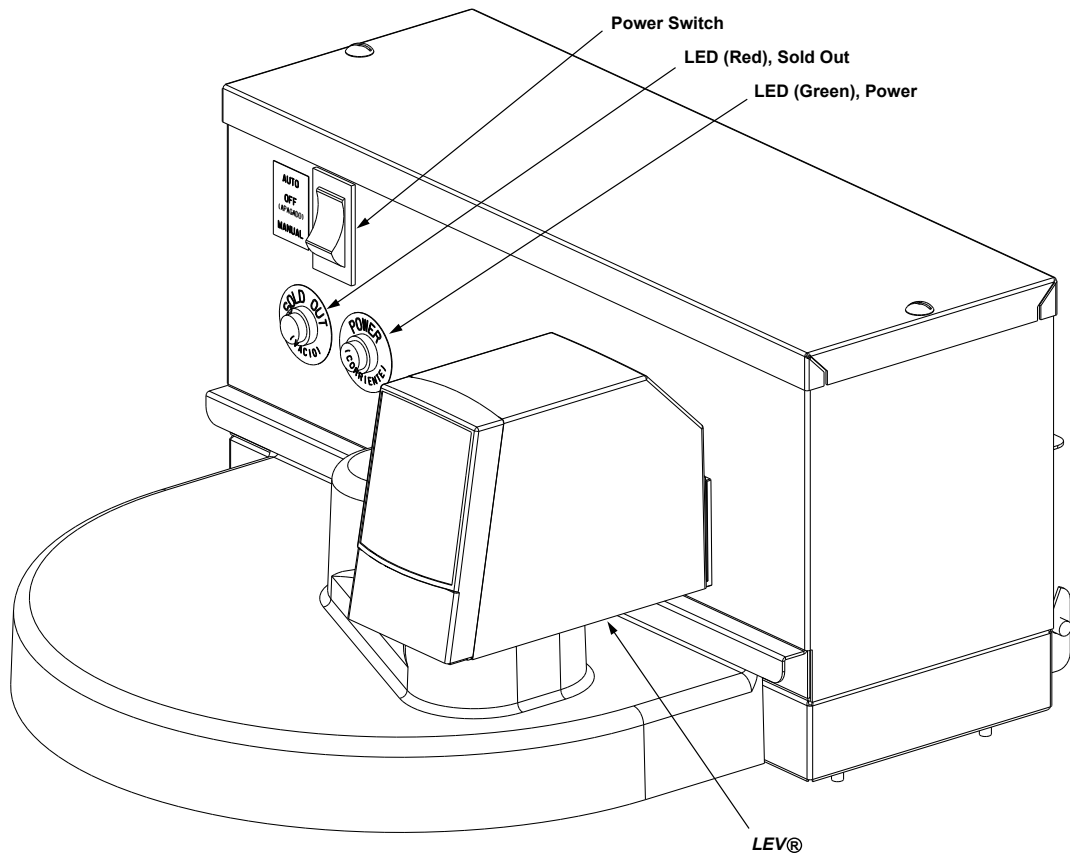
"Lancer" is the registered trademark of Lancer • Copyright — 2001 by Lancer, all rights reserved.

REV:	10/15/01
P.N.	28-0507

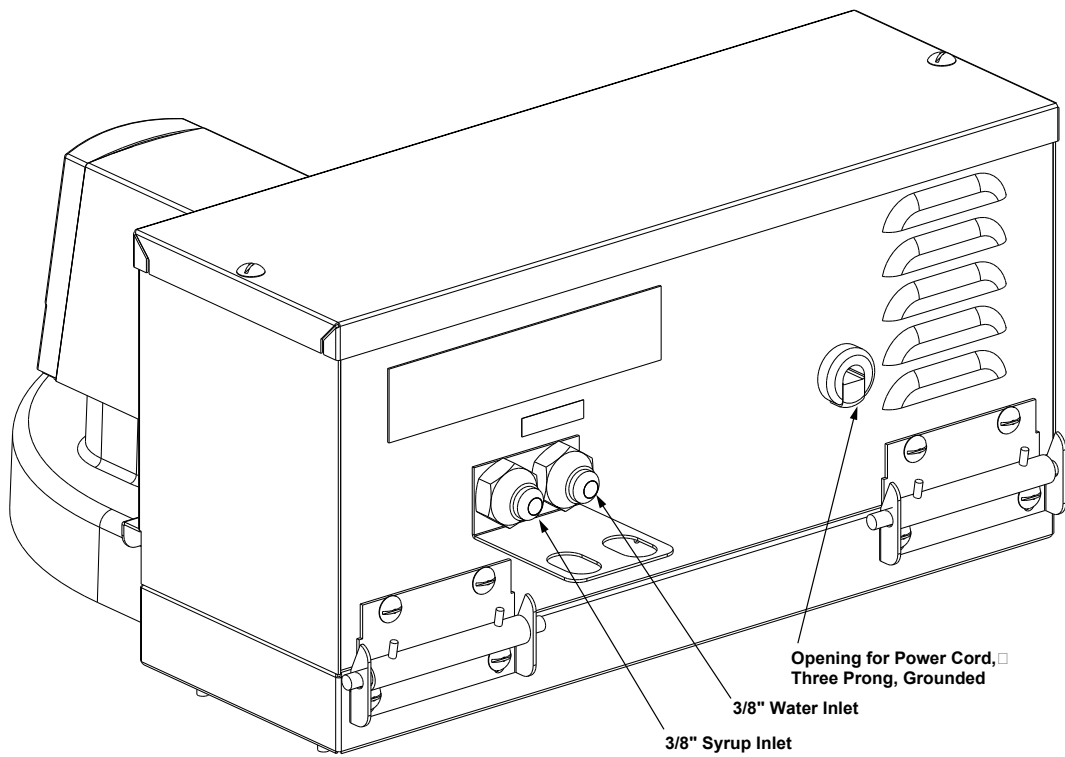
## TABLE OF CONTENTS

NOTICE TO USERS.....	COVER
TABLE OF CONTENTS .....	i
INTRODUCTION TO THE LANCER <i>LEV</i> ® FILL STATION (LFS), PN 85-0087 .....	ii
<b>1. SPECIFICATIONS .....</b>	<b>1</b>
<b>2. INSTALLATION .....</b>	<b>1</b>
2.1 RECEIVING.....	1
2.2 UNPACKING .....	1
2.3 INSTALLATION .....	1
2.4 CONNECTING TO ELECTRICAL POWER .....	2
2.5 CONNECTING SUPPLY LINES TO SOURCES .....	2
<b>3. SCHEDULED MAINTENANCE .....</b>	<b>2</b>
3.1 DAILY .....	2
3.2 BIWEEKLY SANITIZING .....	2
3.3 EVERY SIX MONTHS .....	2
<b>4. DISPENSER CLEANING AND SANITIZING .....</b>	<b>3</b>
4.1 AMBIENT PROCESS .....	3
<b>5. OPERATION OF THE LFS .....</b>	<b>4</b>
5.1 CONNECTIONS .....	4
5.2 INITIAL POWER UP.....	4
5.3 AUTO MODE.....	4
5.4 MANUAL MODE.....	4
5.5 SETTING THE DESIRED RATIO.....	4
5.6 CHANGING SYRUP PACKAGE PROCEDURE .....	5
5.7 CHANGING THE BOX OF SYRUP.....	5
5.8 FUNCTIONS AND ALARMS .....	5
<b>6. TROUBLESHOOTING.....</b>	<b>5</b>
6.1 GREEN POWER LIGHT DOES NOT COME ON .....	5
6.2 UNDER SOLD OUT CONDITION, SOLD OUT ALARM SOUNDS, BUT THE RED SOLD OUT LED DOES NOT FLASH.....	6
6.3 UNIT WILL NOT GO INTO AUTO MODE .....	6
6.4 SOLD OUT ALARM DOES NOT SHUT OFF.....	6
6.5 WATER NOT DISPENSING FROM VALVE .....	6
6.6 RED LIGHT ON CIRCUIT COMES ON OR GREEN LIGHT ON THE CIRCUIT BOARD DOES NOT COME ON .....	6
6.7 WATER LEAKAGE AROUND NOZZLE .....	6
6.8 LEAKAGE BETWEEN UPPER AND LOWER BODIES.....	6
6.9 MISCELLANEOUS LEAKAGE .....	6
6.10 INSUFFICIENT WATER FLOW.....	6
6.11 INSUFFICIENT SYRUP FLOW .....	6
6.12 ERRATIC RATIO °BRIX .....	7
6.13 NO PRODUCT DISPENSED .....	7
6.14 WATER ONLY DISPENSED, NO SYRUP, OR SYRUP ONLY DISPENSED, NO WATER .....	7
6.15 VALVE WILL NOT SHUT OFF .....	7
6.16 EXCESSIVE FOAMING .....	7
<b>7. ILLUSTRATIONS, PARTS LISTINGS, AND WIRING DIAGRAMS .....</b>	<b>8</b>
7.1 CONTROL BOX ASSEMBLY, FRONT VIEW .....	8
7.2 PLUMBING.....	9
7.3 WIRING HARNESS DIAGRAM.....	9
7.4 INTERNAL COMPONENTS.....	10
7.5 WIRING DIAGRAM .....	11

**Introduction to the Lancer LEV® Fill Station (LFS), PN 85-0087**



**Front View, LFS**



**Rear View, LFS**

## 1. SPECIFICATIONS

<b>SHIPPING WEIGHT</b>	Nine (9) pounds (4.1 kg)
<b>DIMENSIONS</b>	14.5" x 5.5" x 7.5" (36.83 cm x 13.97 cm x 19.05 cm)
<b>ELECTRICAL</b>	115V/60Hz/1.0A (Power Cord is provided with three prong grounded plug)
<b>INLET SYRUP CONNECTIONS</b>	3/8 inch Male Flare
<b>INLET WATER CONNECTIONS</b>	3/8 inch Male Flare
<b>FLOW</b>	4.5 ounces per second



ETL LISTED  
CONFORMS TO  
UL STD 471



ETL LISTED  
CERTIFIED TO  
CAN/CSA  
STD C22.2  
NO. 120 C



## 2. INSTALLATION

### 2.1 RECEIVING

Each unit is completely tested under operating conditions and thoroughly inspected before shipment. At the time of shipment, the carrier accepts the unit and any claim for damage must be made with the carrier. Upon receiving unit(s) from the delivering carrier, carefully inspect carton for visible indication of damage. If damage exists, have carrier note same on bill of lading and file a claim with the carrier.

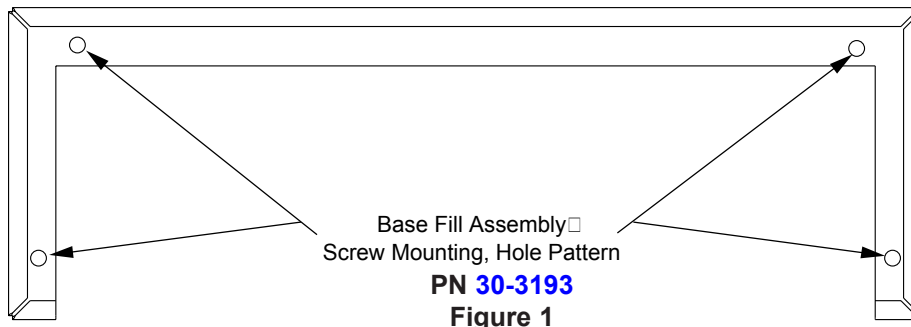
### 2.2 UNPACKING

- Carefully remove unit from shipping carton.
- Inspect unit for concealed damage. If damage exists, notify delivering carrier note and file a claim against the carrier.

### 2.3 INSTALLATION

#### **WARNING**

**DISCONNECT SLUSH MACHINE FROM POWER SOURCE BEFORE BEGINNING INSTALLATION OF THE LANCER LEV® FILL STATION (LFS) TO AVOID POSSIBLE FATAL ELECTRICAL SHOCK OR SERIOUS INJURY.**



#### **Mounting**

- The dispenser is **designed for in-door use ONLY** and to be mounted on unit, in a well lighted, visible area.

#### **CAUTION**

FAILURE TO MAINTAIN PROPER AIR CLEARANCE WILL CAUSE THE UNIT TO OVERHEAT AND WILL RESULT IN PREMATURE COMPONENT FAILURE.

- Locate slush machine with approximately five (5) inches clearance between a wall and the back of the LFS unit. Follow slush machine manufacturer's installation instructions for side and rear ventilation requirements.
- If required, locate and mark four (4) holes using base of fill station (see Figure 1).
- Cover hopper with lid before drilling holes.

#### **CAUTION**

ENSURE HOLES ARE CAREFULLY DRILLED TO AVOID DRILLING TOO DEEP AND THEREBY POSSIBLY DAMAGING REFRIGERATION LINES.

- Drill four (4) holes using a #19 drill bit (0.166) drill bit.

F. Using the ROLOC screws provided (PN 04-0558), attach the LFS to the slush machine.

## 2.4 CONNECTING TO ELECTRICAL POWER

### WARNING

**THIS UNIT MUST BE PROPERLY ELECTRICALLY GROUNDED TO AVOID POSSIBLE FATAL ELECTRICAL SHOCK OR SERIOUS INJURY TO THE OPERATOR. THE POWER CORD IS PROVIDED WITH A THREE PRONG GROUNDED PLUG. IF A THREE-HOLE GROUNDED ELECTRICAL OUTLET IS NOT AVAILABLE, USE AN APPROVED METHOD TO GROUND THE UNIT.**

**DO NOT USE EXTENSION CORDS WITH THIS UNIT. DO NOT "GANG" TOGETHER WITH OTHER ELECTRICAL DEVICES ON THE SAME OUTLET.**

- A. Check the dispenser serial number plate for unit's correct electrical requirements. Do not plug into electrical outlet unless unit electrical configuration, located on serial plate, agrees with local available power supply.
- B. Route the power supply cord to a grounded electrical outlet of the proper voltage and amperage rating, and plug in the unit.

## 2.5 CONNECTING SUPPLY LINES TO SOURCES

- A. Connect free end of plain water lines to water supply [must be 30-110 PSI (2.1 to 7.6 BAR)].
- B. Mark both ends of product and water lines and route to dispenser. Flush lines to be sure each is clean. *Failure to do so may result in clogging of valve(s), resulting in improper operation.* Connect lines to dispenser and secure using Oetiker clamps.
- C. Turn on water supply.
- D. Open all dispenser valves until air is bled from system.
- E. Actuate valve until a smooth flow of water is obtained by holding in Manual Mode.
- F. Check for leaks.
- G. Connect free ends of product lines to bag-in-box.
- H. Activate syrup pump until smooth flow of syrup is obtained by holding in Manual Mode.
- I. Check for syrup leaks.
- J. Adjust the water flow.
- K. Adjust water to syrup (ratio) brix (see Section 5.5).

## 3. SCHEDULED MAINTENANCE

***Drain host product unit hopper before starting the sanitization process to prevent overflowing. The LFS must be sanitized first.***

### 3.1 DAILY CLEANING

- A. Nozzle and diffuser must be cleaned daily.
  - 1. Remove nozzle by twisting counter clockwise and pulling down.
  - 2. Remove diffuser by pulling down.
  - 3. Wash nozzle and diffuser with warm water. **DO NOT use soap or detergent.** This will cause foaming and off taste in finished product.
  - 4. Reinstall diffuser and nozzle.
  - 5. With a clean cloth and warm water, wipe off all of the unit's exterior surfaces. **DO NOT USE ABRASIVE SOAPS OR STRONG DETERGENTS.**
  - 6. Taste each product for off tastes and/or brix changes.
  - 7. Check for leaks.

### 3.2 BI-WEEKLY SANITIZING

Nozzle and diffuser must be sanitized bi-weekly. Comply with the instructions of the dispenser manufacturer to properly sanitize the nozzle and diffuser, and ensure no off-taste is present.

### 3.3 EVERY SIX MONTHS

Clean and sanitize the LFS unit using the appropriate procedures outlined in Section 4 of this manual.

## 4. DISPENSER CLEANING AND SANITIZING

### 4.1 AMBIENT PROCESS

- A. The ambient process is the most common method for cleaning and sanitizing dispenser equipment. The detergent should be caustic-based and the sanitizer should be a low pH (less than 7.0) chloride solution.
- B. Disconnect syrup containers and remove product from tubing by purging with water.
- C. Rinse the lines and fittings with clean, room temperature water to remove all traces of residual product.
- D. Fill lines with a caustic-based (low-sudsing, non-perfumed, and easily rinsed) detergent solution. The solution should be prepared in accordance with the manufacturer's recommendations, but should be at least two (2) percent sodium hydroxide. Make sure the lines are completely filled and allow to stand for at least ten (10) minutes.
- E. Flush the detergent solution from the lines with clean water. Continue rinsing until testing with phenolphthalein shows that the rinse water is free of residual detergent.
- F. Fill the lines with a low pH (7.0) chlorine solution containing at least 100 parts per million (PPM) (100 mg/L) available chlorine. Make sure that lines are completely filled and allow to stand for ten (10) minutes.
- G. Nozzle/Diffuser Sanitizing

***Use the following procedure to sanitize the nozzle housing during dispenser sanitization.***

1. **Cleaning Solution** - Prepare a low sudsing, non-perfumed, and easily rinsed detergent solution and clean, potable water at a temperature of 90° to 110°F.
2. **Sanitizing Solution** - Prepare a chlorine solution (less than pH 7.0) containing 100 PPM available chlorine with clean, potable water at a temperature of 90° to 110°F. Any sanitizing solution may be used as long as it is prepared in accordance with the manufacturer's written recommendations and safety guidelines, and provides 100 PPM available chlorine.
3. **Cleaning Procedure**

#### **CAUTION**

BE CAREFUL NOT TO GET SANITIZING SOLUTION ON THE CIRCUIT BOARD.

- a. Disconnect power, so the valve will not be inadvertently activated while cleaning.
- b. Remove nozzle housing by twisting it counter-clockwise and pulling it down.
- c. Wash the nozzle housing with the cleaning solution.
- d. Immerse the nozzle housing in a bath of the sanitizing solution for 15 minutes.
- e. While the parts are in the sanitizing solution, visually inspect around the nozzle mounting area for syrup residue. Using a cloth or nozzle brush and sanitizing solution, clean this area and the bottom of the nozzle body.
- f. Wipe off the valve shroud assembly and any other areas that may have been splashed by syrup.
- g. Wearing sanitary gloves, remove, drain, and air dry the nozzle housing.
- h. Make certain the nozzle o-ring is in place around the nozzle mounting area on the valve. If necessary, slide a new nozzle o-ring (PN 02-0228) onto the nozzle mounting area. (Wear sanitary gloves while handling the o-ring.) If needed, apply 111 lubricant (or another FDA approved lubricant) to the o-ring.
- i. Wearing sanitary gloves, install the nozzle housing by inserting it into the nozzle body and twisting it clockwise to lock it in place.
- j. Connect power and replace cover.
- k. Reconnect syrup containers and ready Unit for operation.

#### **WARNING**

**REMOVE SANITIZING SOLUTION FROM DISPENSER AS INSTRUCTED. RESIDUAL SANITIZING SOLUTION LEFT IN SYSTEM COULD CREATE HEALTH HAZARD.**

- l. Draw drinks to refill lines and flush the chlorine solution from the dispenser.

#### **NOTE**

Please note that a fresh water rinse cannot follow sanitization of equipment. Purge only with the end use product. This is an NSF requirement.

m. Taste the beverage to verify that there is no off taste.

## 5. OPERATION OF THE LFS

### 5.1 CONNECTIONS

- A. Attach 3/8" syrup hoses between syrup (BIB), syrup pump, and the unit. Inlet syrup hose, 3/8", attaches to left side of unit.
- B. Attach CO<sub>2</sub> connection to syrup pump.

#### **NOTE:**

The unit recognizes the left side of the unit as syrup and right side as water.

#### **WARNING:**

**FAILURE TO RUN UNIT WITHOUT WATER LINES CONNECTED WILL RESULT IN OVERHEAT OF THE SOLENOID VALVES.**

- C. Attach water lines from water source or prechiller to the unit.

### 5.2 INITIAL POWER UP

- A. Insure the switches on the unit are set to the middle (OFF) position.
- B. Plug in the unit.

### 5.3 AUTO MODE

- A. Switch the unit into AUTO Mode. The Green power light will come on and the valve will start dispensing syrup and water out of the valve.

### 5.4 MANUAL MODE

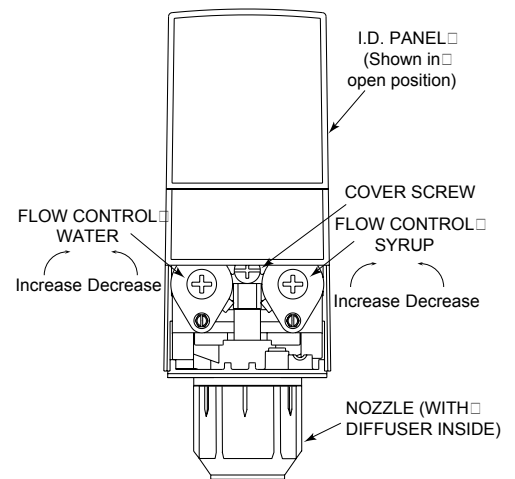
- A. Switch the unit in MANUAL Mode (this requires holding down the switch). The Green power light will come on and the valve will start dispensing syrup and water out of the valve.

### 5.5 SETTING THE DESIRED RATIO

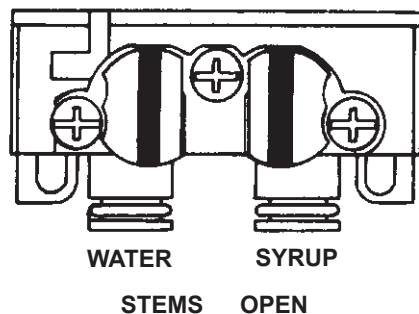
#### A. ADJUSTING WATER FLOW

The Model 145 **LEV**® water flow may be adjusted from 2.0 oz/sec (59.2 ml/sec) to 4.50 oz/sec (133.2 ml/sec). The restricted flow adjustment plug adjusts to a maximum flow of 3.3 oz/sec (97.7 ml/sec).

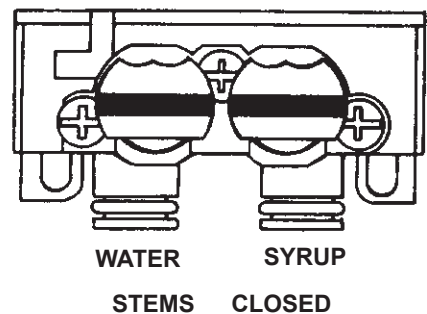
1. Slide I.D. panel UP until flow control adjustments are exposed (see Figure 2).
2. Remove nozzle by twisting counter clockwise and pulling down.
3. Remove diffuser by pulling down.
4. Install Lancer syrup separator (PN 54-0201, smoke, for Model 145 valves) in place of the nozzle.



**Valve Adjustment  
Figure 2**



**Mounting Block Stems in OPEN Position  
Figure 3**



**Mounting Block Stems in CLOSED Position  
Figure 4**

5. Activate valve to fill separator syrup tube.
6. Hold a Brix cup under syrup separator. Dispense water and syrup into cup for two (2) seconds. Divide number of ounces (ml) of water in cup by two (2) to determine water flow rate per second.
7. To obtain desired water flow rate, use a screwdriver to adjust water flow control (see Figure 2).

**B. ADJUSTING WATER TO SYRUP BRIX**

The Model 145 syrup flow may be adjusted from 0.50 oz/sec (14.8 ml/sec) to 0.90 oz/sec (26.6 ml/sec).

1. Hold the Brix cup under the syrup separator and activate valve. Check Brix.
2. To obtain desired Brix, use screwdriver to adjust syrup flow control (see Figure 2).
3. Remove syrup separator.
4. Install diffuser and nozzle.
5. Slide I.D. panel (Valve Cover) down.

**5.6 CHANGING SYRUP PACKAGE PROCEDURE**

When a package of syrup is empty and the unit is in AUTO mode or MANUAL mode, the SOLD OUT light will blink and the alarm will sound until a new package is replaced as described in the following section.

**5.7 CHANGING THE BOX OF SYRUP**

- A. If the ratio does not need to be changed:
  1. Put the switch in the AUTO position.
  2. The unit should be ready to fill in the AUTO mode again.
- B. If the ratio does need to be changed:
  1. Put the Switch in OFF mode and use MANUAL mode to dispense product as needed.
  2. Follow the procedure to change the ratio (see Section 5.5).
  3. Put the Switch in AUTO mode to go into AUTO fill mode. The unit should be ready to fill in the AUTO mode again.

**5.8 FUNCTIONS AND ALARMS**

- A. The probes monitor the level of product in the hopper. If the level of product flows below the Lo probes, then the valve comes on and begins filling the hopper. The valve will shut off once contact is made with the Hi probe. In the event the product flows above the Hi probe, the valve will shut off 17 seconds after making contact with the Lo probes. (Applies for AUTO and MANUAL modes.)
- B. Sold out Alarm monitors the amount of syrup in the bag in the box when the level is low the pressure switch activates and triggers an alarm and red led light which will blink. The alarm can be turned off by replacing the bag in the box, changing the CO<sub>2</sub> bottle or switching the unit in MANUAL.

**NOTE:**

By switching the unit in MANUAL and then back into AUTO, you turn the sound alarm only OFF. The red SOLD OUT switch continues to blink until one of the above is performed.

**6. TROUBLESHOOTING**

<b>TROUBLE</b>	<b>CAUSE</b>	<b>REMEDY</b>
<b>6.1</b> Green power light does not come on.	A. Unit not plugged in. B. Loose connection.  C. Polarity incorrect (wires crossed).  D. Failed transformer. E. Failed PCB.	A. Check to ensure unit is plugged in. B. Unscrew cover and ensure all connections are secure. C. Looking at terminals (LED away from you), ensure flat side of the rectangle (between the terminals) is at bottom and that the red positive wire is on the right terminal. D. Replace transformer. E. Replace PCB.

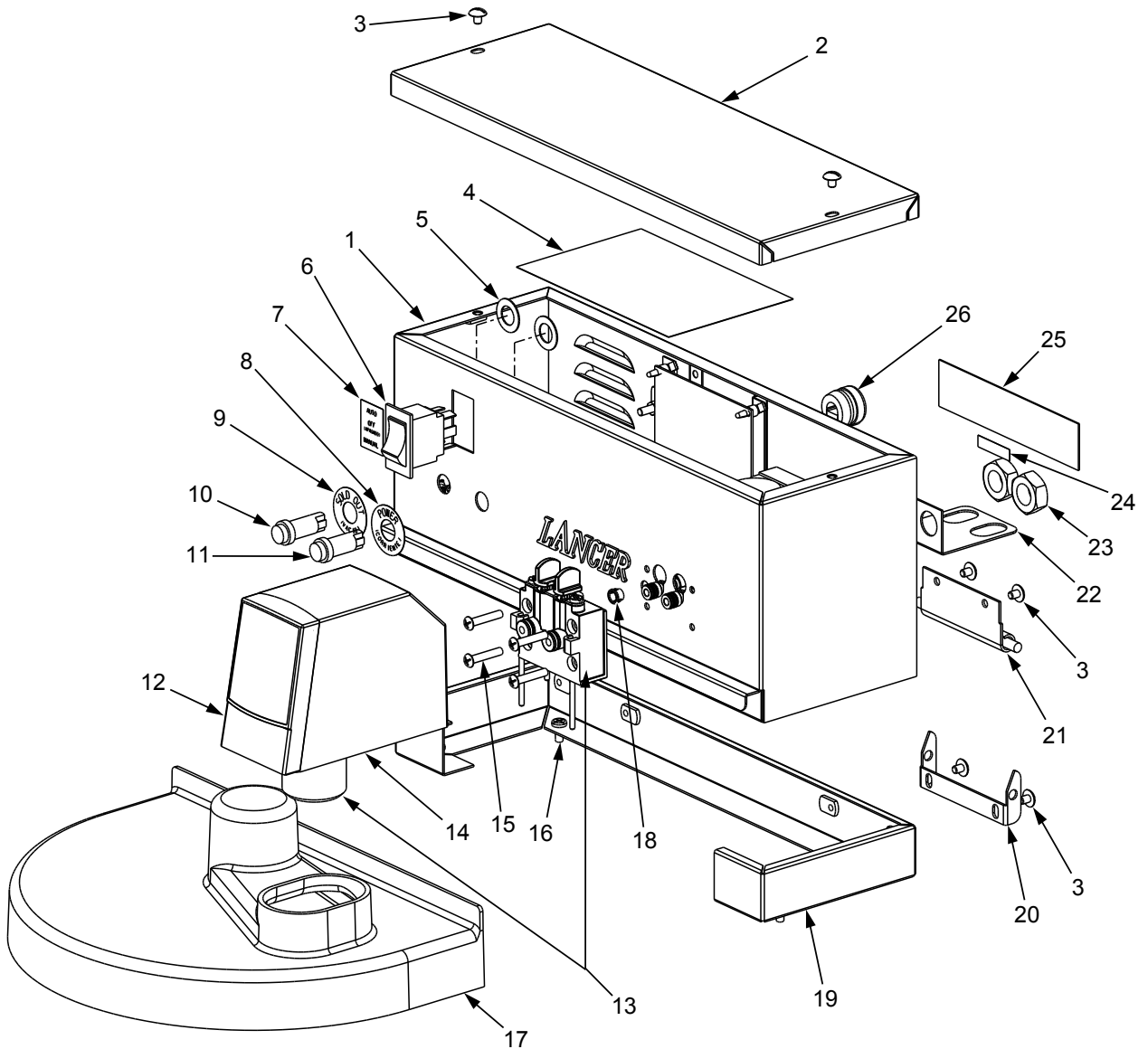
<b>TROUBLE</b>	<b>CAUSE</b>	<b>REMEDY</b>
<b>6.2</b> Under SOLD OUT condition, SOLD OUT alarm sounds, but the Red SOLD OUT LED does not flash.	A. Loose connection. B. Polarity incorrect (cables crossed).	A. Ensure cables are secure. B. Looking at terminals (LED away from you), ensure flat side of the rectangle (between the terminals) is at bottom and that the red positive wire is on the right terminal.
<b>6.3</b> Unit will not go into AUTO mode.	A. Loose connection. B. Switch is broken. C. Failed PCB.	A. Check to ensure cables plugged in correctly. B. Replace Switch. C. Replace PCB.
<b>6.4</b> SOLD OUT Alarm does not shut OFF.	A. Pressure Switch is ON.  B. Failed PCB.	A. 1. Check Syrup supply. 2. Check Syrup Bag Line Connections. 3. Check CO <sub>2</sub> supply. 4. Check for loose connection. 5. Replace pressure switch. B. Replace PCB.
<b>6.5</b> Water not dispensing from valve.	A. Water is not on. B. Chiller is clogged or shut OFF.	A. Check water supply. B. Ensure there are no leaks or clogs in the chiller and that chiller is ON.
<b>6.6</b> Red light on the circuit comes on or Green light on the circuit board does not come on.	A. Loose connection. B. Bad solder joint or failed PCB.	A. Check all connections. B. Replace PCB.
<b>6.7</b> Water leakage around nozzle.	A. O-ring is not properly installed above diffuser. B. O-ring is damaged or missing.	A. Install or replace o-ring correctly. B. Replace o-ring.
<b>6.8</b> Leakage between upper and lower bodies.	A. One or more retaining screws loose. B. Paddle arm assemblies are worn or damaged.	A. Tighten all six (6) retaining screws. B. Replace paddle arm assemblies.
<b>6.9</b> Miscellaneous leakage.	A. Gap between parts. B. Damaged, missing, or improperly installed o-rings.	A. Tighten appropriate retaining screws. B. Replace appropriate o-rings.
<b>6.10</b> Insufficient water flow.	A. Water flowing pressure is too low, or restricted.  B. Foreign debris in water flow controls.	A. 1. Check incoming water from carbonator to ensure minimum flowing pressure. See SPECIFICATIONS. 2. Check stems on mounting block to ensure it is in fully OPEN position. B. Remove water flow control from upper body and clean out any foreign materials to ensure smooth free piston movement.
<b>6.11</b> Insufficient syrup flow.	A. Syrup flowing pressure is too low, or restricted.  B. Foreign debris in syrup flow controls.	A. 1. Check incoming syrup to ensure minimum flowing pressure. See SPECIFICATIONS. 2. Check shutoff on mounting block to ensure it is in fully OPEN position. B. Remove syrup flow control from upper body and clean out any foreign materials to ensure smooth free piston movement.

<b>TROUBLE</b>	<b>CAUSE</b>	<b>REMEDY</b>
<b>6.12</b> Erratic Ratio °Brix.	<ul style="list-style-type: none"> <li>A. Incoming water and/or syrup supply not at sufficient flowing pressure.</li> <li>B. Foreign debris in water and/or syrup flow controls.</li> </ul>	<ul style="list-style-type: none"> <li>A. Check incoming water and syrup supply to ensure sufficient flowing pressure.</li> <li>B. Remove flow controls and clean out any foreign materials to ensure smooth free piston movement.</li> </ul>
<b>6.13</b> No product dispensed.	<ul style="list-style-type: none"> <li>A. Water and syrup shutoffs are not fully OPEN.</li> <li>B. Ensure cup lever arm, or I.D. Panel actuator is actuating switch.</li> <li>C. Electric current not reaching valve.</li> <li>D. Improper or inadequate water or syrup supply.</li> <li>E. BIB empty.</li> </ul>	<ul style="list-style-type: none"> <li>A. Check stems on mounting block to ensure they are in fully OPEN position.</li> <li>B. If not, repair or replace.</li> <li>C. Check electric current supplied to valve. See SPECIFICATIONS. If current is adequate, check solenoid coil and switch. Replace if necessary.</li> <li>D. Remove valve from mounting block and open stems slightly and check to ensure proper water and syrup supply. If no supply, check dispenser for freeze-up or other problems.</li> <li>E. Replace BIB.</li> </ul>
<b>6.14</b> Water only dispensed, no syrup; or syrup only dispensed, no water.	<ul style="list-style-type: none"> <li>A. Water or syrup stem on mounting block not fully OPEN.</li> <li>B. Improper or inadequate water or syrup supply.</li> </ul>	<ul style="list-style-type: none"> <li>A. Check stems on mounting block to ensure they are in full OPEN position.</li> <li>B. Remove valve from mounting block and open stem slightly to check for proper syrup and water supply. If no supply, check dispenser for freeze-up or other problems.</li> </ul>
<b>6.15</b> Valve will not shut OFF.	<ul style="list-style-type: none"> <li>A. Cup Lever may be sticking or binding.</li> <li>B. Switch not actuating properly.</li> <li>C. Solenoid armature not returning to bottom position.</li> <li>D. Debris or damage to Paddle arms.</li> </ul>	<ul style="list-style-type: none"> <li>A. Correct or replace lever.</li> <li>B. Check switch for free actuation.</li> <li>C. Replace defective solenoid armature or spring.</li> <li>D. Remove debris and/or replace damaged paddle arms.</li> </ul>
<b>6.16</b> Excessive foaming.	<ul style="list-style-type: none"> <li>A. Incoming water or syrup temperature too high.</li> <li>B. Water flow rate too high.</li> <li>C. Nozzle and diffuser not clean.</li> <li>D. Nozzle and diffuser not properly installed.</li> <li>E. CO<sub>2</sub> pressure too high.</li> </ul>	<ul style="list-style-type: none"> <li>A. Correct at dispenser.</li> <li>B. Readjust and reset °Brix. See Section 5.5.</li> <li>C. Remove and clean.</li> <li>D. Remove and install properly.</li> <li>E. Check for proper pressure setting.</li> </ul>

***NOTES:***

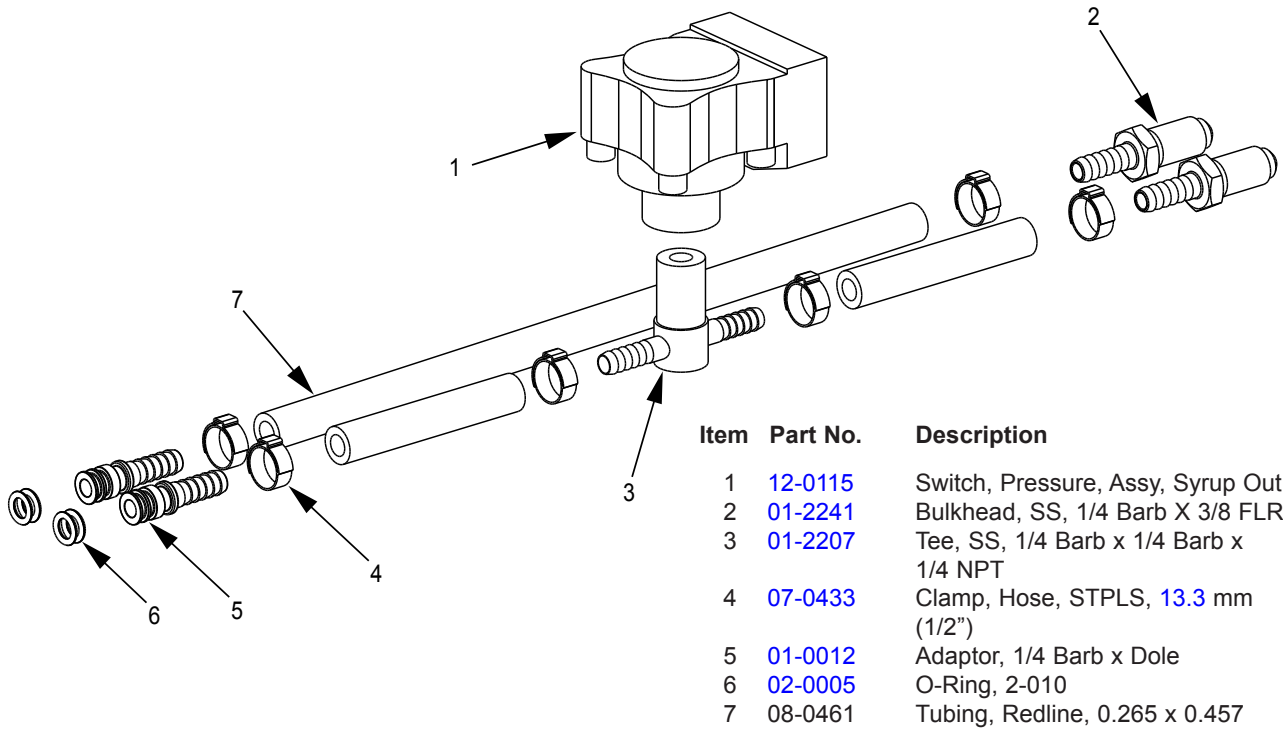
## 7. ILLUSTRATIONS, PARTS LISTINGS, AND WIRING DIAGRAMS

### 7.1 CONTROL BOX ASSEMBLY, FRONT VIEW

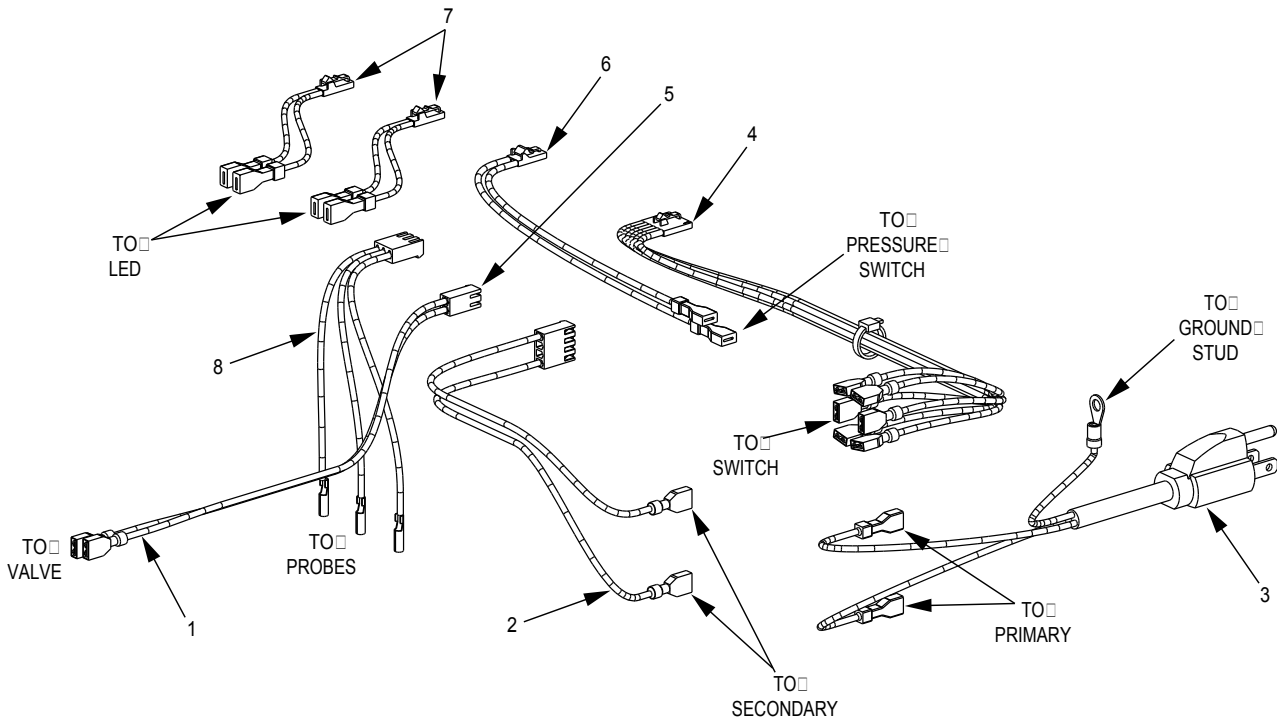


Item	Part No.	Description	Item	Part No.	Description
1	51-1421	Control Box Assy, DQ, LFS	14	54-0029/01	Cover, Subassy, <b>LEV</b> <sup>®</sup> , Lift-Off
2	30-3125	Cover, Control Box, LFS	15	04-1089	Screw, 10 - 32, RH, PFH/SL, 1.000
3	04-0148	Screw, 10 - 32 x 0.250, THD, SL, MS, SS	16	04-0558	Screw, 10 - 32 x 0.375, LG, PHP, ROLOC
4	06-2486/01	Decal, Wiring Diagram, LFS	17	05-2014	Lid, Hopper
5	04-1292	Washer, SS, 0.500 ID X 0.870 OD X 0.0300 THK	18	13-0005	Bushing, Strain Relief, 0.312 OD
6	12-0446	Switch, Rocker, Double Pole, Double Throw	19	30-3193	Base, DQ, LFS
7	06-2483	Label, Switch, LFS	20	30-3134	Hinge, Bottom, LFS
8	06-2484	Label, Power LED, LFS	21	07-0575	Hinge, SS, Concealed, Removable
9	06-2485	Label, Sold Out LED, LFS	22	30-3135	Support, Syrup and Water
10	12-0447	LED, Red, Snap Mount, 5 VDC	23	04-0684	Nut, Hex, Jam, 5/8 - 18, SS, Plain
11	12-0448	LED, Green, Snap Mount, 5 VDC	24	06-0112	Label, Water
12	05-0287/02	Panel, ID. <b>LEV</b> <sup>®</sup> , Basic, Lift-Off	25	06-0075-01	Nameplate, Vinyl, PN/SN/ELEC ONLY
13	19-0181/01	<b>LEV</b> <sup>®</sup> , 4.5, W/O C, L, S, WH (includes back block)	26	13-0028	Relief, Strain, 7/8 DIA

## 7.2 PLUMBING

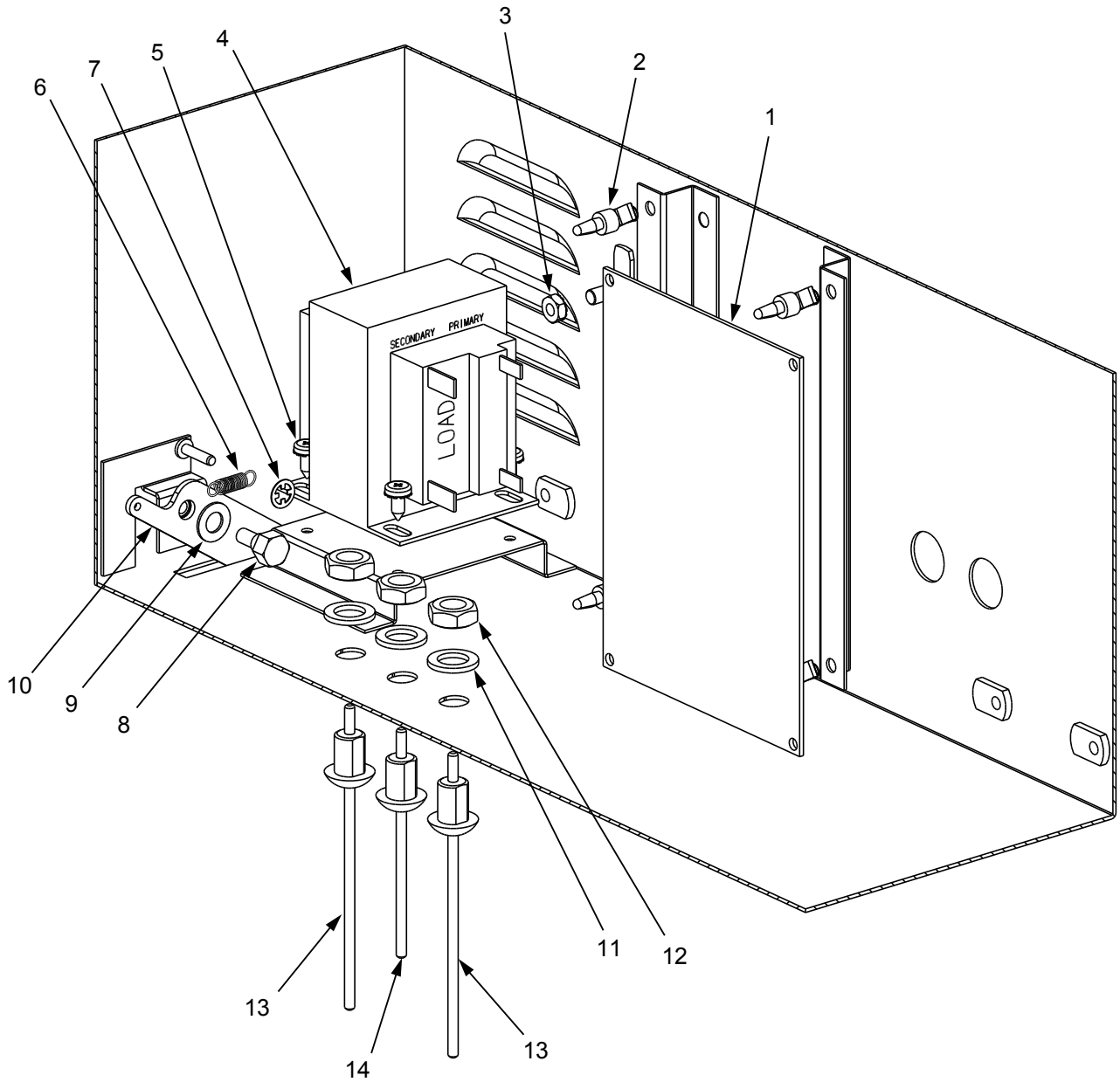


## 7.3 WIRING HARNESS DIAGRAM



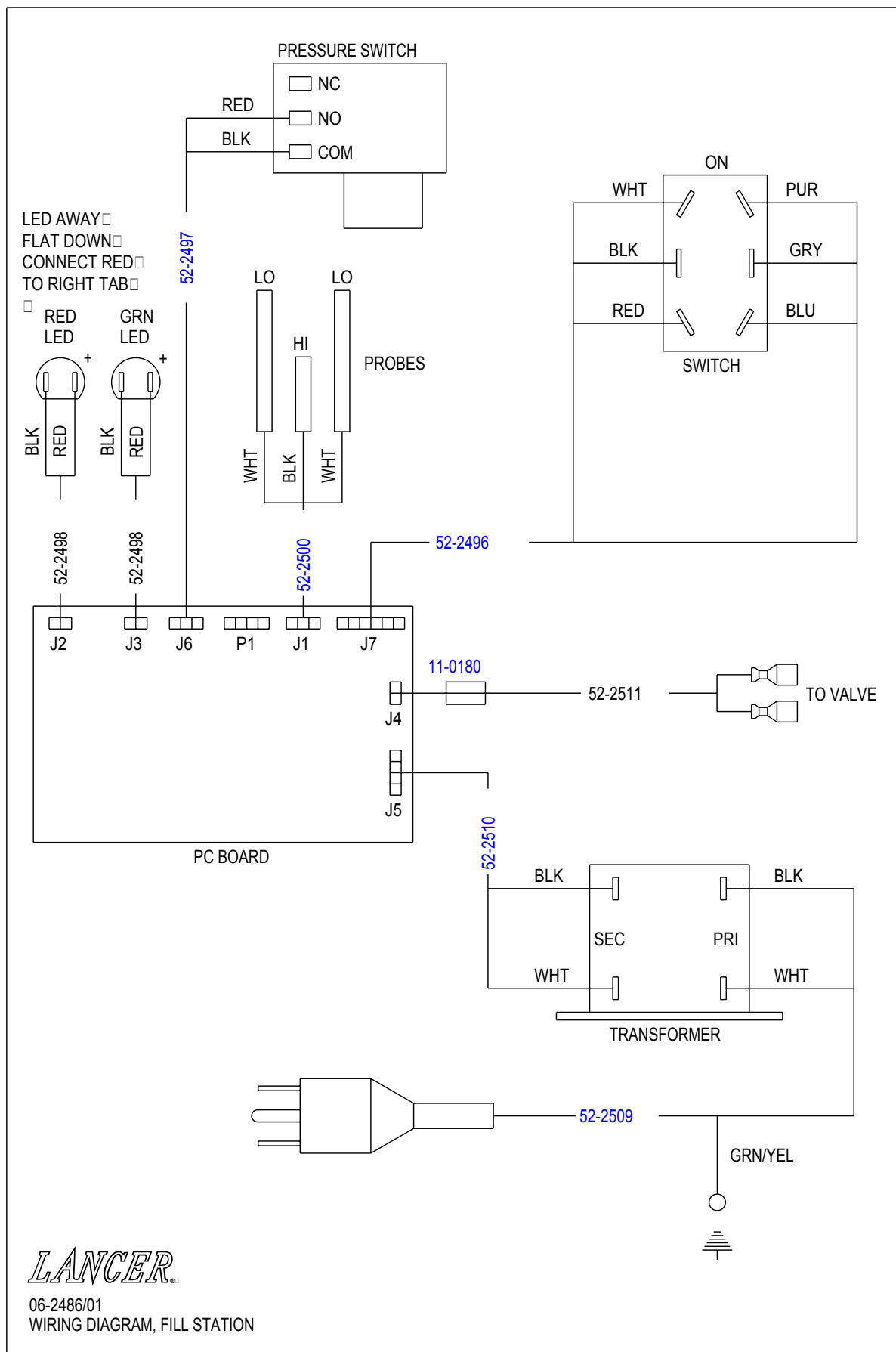
Item	Part No.	Description
1	52-2511	Harness, Valve to PCB, LFS
2	52-2510	Harness, Transformer to PCB, LFS
3	52-2509	Cord Assy, Power, 115V, LFS
4	52-2496	Harness, Switch, LFS
5	11-0180	Connector, Housing, Wire to Board
6	52-2497	Harness, Sold Out Valve, LFS
7	52-2498/01	Harness, LED, LFS
8	52-2500	Harness, Probe, LFS

## 7.4 INTERNAL COMPONENTS



Item	Part No.	Description	Item	Part No.	Description
1	<a href="#">52-2502</a>	PCB Assy, LFS	8	04-1053	Screw, Shoulder, 10 - 24, Draft
2	05-1535	Support, PCB, 0.156 x 0.187 x 0.250 H	9	04-1308	Washer, Flat, 0.032 x 0.265 ID x 0.500 OD, SS
3	04-0286	Nut, Hex, 10 - 24 x 5/16, SS	10	30-8617	Kick Stand, DQ, LFS
4	<a href="#">25-0039</a>	Transformer, 120V/50-60Hz, 24V, 50VA	11	04-1315	Washer, Flat, 3/8 x 5/8 x 1/16 Thick
5	04-0504	Screw, 8 - 18 x 0.375, PHD, W/ELW, PH, AB	12	04-1285	Nut, SS, 3/8 - 16
6	<a href="#">03-0095</a>	Spring, Outside, Yoke	13	<a href="#">52-2492</a>	Probe, LO Level, LFS
7	03-0342	Ring, Retaining, 1/8 Shaft, External, Self Locking	14	<a href="#">52-2493</a>	Probe, HI Level, LFS

### 7.5 WIRING DIAGRAM



**LANCER**

06-2486/01  
 WIRING DIAGRAM, FILL STATION

*(Continued from previous page)*

**EcuLancer S.A. - Ecuador**

Lancer Sales Company  
Contact: Luciano Lopez  
Sector Las Acacias  
Luis De Beethoven #958  
Y Capitan Rafael Ramos  
Quito, Ecuador  
Phone: 593-22-401-598, 400-937, 406-418  
FAX: 593-22-400-535  
e-mail: Llopez@ecnet.ec

**Lancer Authorized Distributors****Eximport & Barter Co. - Caribbean**

2101 S.W. 56th Terrace  
Hollywood, FL 33023 USA  
Phone: (954) 967-9999  
FAX: (954) 967-9900  
e-mail: edbrandao@aol.com

**PromoVen, S.A. - Argentina**

Contact: Rafael Mendoza  
Juncal 858 - Piso 3 Depto. "L"  
(1062) Buenos Aires  
Argentina  
Phone: (54.11)4394.7654  
FAX: (54.11)4394.1193  
e-mail: promoven@customw.com.ar

**Bras Sulamericana LTDA. - Brasil**

Contact: Fabio Queiroz  
Rua. Dr. Ladislau Rettii, 1400  
Parque Alexandre  
Cotia Sao Paulo - Brasil  
CEP: 06714-150  
Phone: 55-11-4612-1122  
FAX: 55-11-4612-2219  
e-mail: fabio.queiroz@bras.com.br

**Lancer Chile Ltda. - Chile**

Contact: Heriberto Concha  
Vicuna Mackenna 3019, San Joaquin  
Santiago, Chile  
Phone: 56-2-552-1657  
FAX: 56-2-552-1961  
e-mail: hconcha@lancer-intl.com

**Lancer Pacific****International Sales**

6655 Lancer Blvd.  
San Antonio, TX 78219  
Phone: (210) 310-7000  
FAX: (210) 310-7242  
1-800-729-1500  
e-mail: asia@lancercorp.com

**Australia**

Lancer Pacific Pty Ltd  
5 Toogood Avenue  
Beverley SA 5009  
Australia  
Phone: 61-8-8268-1388  
FAX: 61-8-8268-1978  
e-mail: ian-lunniss@lancer-pacific.com.au  
steve-sotiriou@lancer-pacific.com.au

Lancer Pacific Pty Ltd  
7 Slough Avenue  
Silverwater, NSW, 2128  
Sydney, Australia  
Phone: 61-2-9648-6840  
FAX: 61-2-9648-6850  
e-mail: richard-abraham@lancer-pacific.com.au  
fiore-alvaro@lancer-pacific.com.au  
(for Beer)  
rob-burdock@lancer-pacific.com.au  
(Senior Director - Asia)

Lancer Pacific Pty Ltd  
55 Keele Street  
Collingwood  
Melbourne Victoria 3066  
Australia  
Phone: 03 8415 1920  
FAX: 03 8415 1929  
e-mail: glenn-blakiston@lancer-pacific.com.au

Lancer Pacific Pty Ltd  
Unit 31, 284 Musgrave Drive  
Coopers Plains 4108  
Queensland  
Australia  
Phone: 61-7-3274-5700  
FAX: 61-7-3875-1805  
e-mail: brett-thomson@lancer-pacific.com.au

**New Zealand**

Lancer Pacific Ltd  
9 O'Rorke Street  
Onehunga, Auckland  
New Zealand  
Phone: 64-9-634-3612  
FAX: 64-9-634-1472  
e-mail: phil-mason@lancer-pacific.com.au

**Hong Kong**

Patrick Co - Area Manager - Asia  
Phone: 852-29670900  
FAX: 852-30105882  
e-mail: patrickco@lancer-asia.com

**Lancer Authorized Distributors****Shanghai Freser International Co Ltd. - China**

1856, Hu Tai Road  
Shanghai, 200436, China  
Phone: 86-21-5650-3555  
FAX: 86-21-5650-2666  
e-mail: daniel@freser.com.cn

**Freser (HK) Company Ltd - Hong Kong**

Flat A, 24/F., Houston Industrial Bldg.  
32-40 Wang Lung Street  
Tsuen Wan, N. T., Hong Kong  
Phone: 852-2408-2595  
FAX: 852-2408-2605  
e-mail: freserhk@netvigator.com

**P.T. Ciptapratama Sentosamakmur - Indonesia**

Jl. Angrek Nelly Murni, Blok A - 39, Slipi  
Jakarta 11480, Indonesia  
Phone: 62-21-532-3737  
FAX: 62-21-532-3666  
e-mail: ciptasm@indosat.net.id

**Hayakawa Sanki - Japan**

Hayakawa Sanki, Inc.  
1-13-13, Kayaba-cho  
Nihonbashi, Chuo-ku  
Tokyo, 103-0025  
Japan  
Phone: 03-5651-1481  
FAX: 03-5651-1445  
e-mail: SANKI10217@aol.com

**Tahoe Corporation - Korea**

Tahoe Corporation  
2FL, 835-66 Yocksam-dong  
Kangnam-Ku  
Seoul, Korea  
Phone: 82-2-557-5612, -5614  
FAX: 82-2-557-5615  
e-mail: tahoe@netgo.com

**Freser (MALAYSIA) SDN. BHD. - Malaysia**

No. 31, Jalan TPP 5/13, Taman  
Perindustrian Puchong, Seksyen 5,  
47100 Puchong, Selangor, Malaysia  
Phone: 60-3-8061-6666  
FAX: 60-3-8062-1007  
e-mail: freser@tm.net.my

**R.B.P. Industrial Sales Inc - Philippines**

Unit 20, Facilities Centre Bldg.  
548 Shaw Blvd  
Mandaluyong City, Philippines  
Phone: 632-531-1215/1221/1289  
FAX: 632-531-1271  
e-mail: rbpsales@info.com.ph

**Freser (S) Pte Ltd - Singapore**

Blk 998 Toa Payoh North  
#04-12/14  
Singapore 318993  
Phone: 65-6352-0943  
FAX: 65-6352-8594  
e-mail: fresersin@pacific.net.sg

**Freser International Corporation - Taiwan**

No. 76, Gui-Sui Street  
Taipei 103, Taiwan R.O.C.  
Phone: 886-2-2553-1555  
FAX: 886-2-2553-2742  
e-mail: allen@intl.freser.com.tw

**Freser (Thailand) Co Ltd - Thailand**

3/15 Moo 3, Soi Ruammitr  
Tivanont Road, Banmai  
Pakkred, Nonthaburi, 11120  
Thailand  
Phone: 662-961-9543  
FAX: 662-961-9550  
e-mail: prachat@asianet.co.th

**Lancer - Indian Sub-Continent****India**

Shabbir Shafiqui - Area Manager  
India and Sub-Continent  
B-7, Pannalal Silk Mill Compounds  
78, LBS Marg, Bhandup (W)  
Mumbai 400-078, India  
Phone: 91-22-2561-6665  
Cel No.: 91-98-2029-5252  
FAX: 91-22-5637-4018  
e-mail: shafiquis@vsnl.com

**Lancer Authorized Distributors****Western Refrigeration Ltd - India**

B-7, Pannalal Silk Mill Compounds  
78 L.B.S. Marg, Bhandup (W)  
Mumbai 400-078, India  
Phone: 91-22-2561-6665  
FAX: 91-22-2562-2257  
e-mail: western@bom5.vsnl.net.in

**Bengal Marketing Company - Bangladesh**

Skylark Point (6th Floor)  
Room #G-2  
24/A Bijoy Nagar,  
Dhaka-1000, Bangladesh  
Phone: 880-2-934-2987  
FAX: 880-2-935-0127  
e-mail: bmc@dhaka.agni.com

**Dynamic Equipment - Pakistan**

Dynamic Equipment and Controls (Pvt.) Ltd.  
F-1/23, Canal Cottages, Block-D.  
New Muslim Town.  
Lahore, Pakistan.  
Phone: 0092-42-583-6737  
0092-42-583-6787  
FAX: 0092-42-586-7924  
e-mail: info@dynamic-eqpt.com.pk



**Directory of USA - Canada Offices,  
International Offices, and Authorized Distributors**

**Corporate Office**

**6655 Lancer Blvd. • San Antonio, Texas 78219 • 210-310-7000 • 1-800-729-1500 • FAX 210-310-7250**

**Lancer USA**

**Manufacturing Locations**

**Foster Road Facilities**

6655 Lancer Blvd  
San Antonio, TX 78219  
Phone: (210) 310-7000  
MFG FAX: (210) 310-7088  
ENG FAX: (210) 310-7096  
ACCT FAX: (210) 310-7091  
PURCH FAX: (210) 310-7094

**Lancer FBD**

5620 Business Park  
San Antonio, TX 78218  
Phone: (210) 666-0544  
FAX: (210) 666-2044

**Lancer Ice Link**

6655 Lancer Blvd  
San Antonio, TX 78219  
Phone: (210) 310-7174  
FAX: (210) 310-7245

**Remanufacturing**

6655 Lancer Blvd  
San Antonio, TX 78219  
Phone: (210) 310-7356  
FAX: (210) 310-7261  
1-800-729-1550

**Lancer North America**

**USA - Canada Sales**

6655 Lancer Blvd.  
San Antonio, TX 78219  
Phone: (210) 310-7000  
SALES FAX: (210) 310-7245  
CUSTOMER SERVICE FAX: (210) 310-7250  
1-800-729-1500

**Georgia Office**

1125 Northmeadow Parkway, Suite 116  
Roswell, GA 30076  
Phone: (770) 343-8828  
FAX: (770) 475-8646  
1-800-729-1750

**Lancer Authorized Distributors**

**Advanced Beverage Solutions (ABS)**

1425 South Wright Blvd.  
Schaumburg, IL 60193  
Phone: (847) 524-1707  
(877) 814-2271  
FAX: (847) 524-1710  
www.absone.com

**Bevco**

6900 Camille Avenue  
Oklahoma City, OK 73149  
Phone: (405) 672-7770  
FAX: (405) 672-7443  
e-mail: info@bevcoinc.com

**Joe Kirwan Company**

119 White Oak Lane  
Old Bridge, NJ 08857  
Phone: (732) 679-1900  
FAX: (732) 679-9236  
e-mail: rog@jikirwan.com

**L & M Beverage Equipment Co. Inc.**

12510 Santa Fe Trail Drive  
Lenexa, KS 66215  
Phone: (913) 888-8988  
FAX: (913) 888-9137  
e-mail: L7mco@aol.com

**(Update #42 - as of February 18, 2003)**

**Ernest F. Mariani Company**

614 West 600 South  
Salt Lake City, UT 84104  
Phone: (801) 359-3744  
FAX: (801) 531-9615  
e-mail: stephanie@efmco.com, or  
clay@efmco.com

**Mark Powers & Company, Inc.**

P.O. Box 72  
1821 Henry Street  
Guntersville, AL 35976  
Phone: (256) 582-6620  
FAX: (256) 582-8533  
e-mail: sales@markpowers-and-company.com

**Maurer Supply, Inc.**

843 Rainier Avenue South  
Seattle, WA 98144  
Phone: (206) 323-8640  
FAX: (206) 323-9286  
e-mail: maurersupply@qwest.net

**Simgo Ltd.**

5122 Timberlea Blvd.  
Mississauga, Ontario L4W 2S5  
Canada  
Phone: 905-602-5800  
FAX: 905-602-5804  
e-mail: simgo@simgo.com

**Simgo (B.C.) Ltd.**

16-8125 - 130th Street  
Surrey, B.C. V3W 7X4  
Canada  
Phone: 604-590-4022  
FAX: 604-590-1601

**Lancer Europe**

**Belgium - European Central Office**

Lancer Europe, S.A.  
Mechelsesteenweg 592  
B-1930 Zaventem  
Belgium  
Phone: 32-2-755-2390  
FAX: 32-2-755-2399  
e-mail: lancer.europe@glo.be

**England**

17 Bembridge Gardens  
Ruislip, Middlesex  
HA4 7ER, England  
Phone: 44-1895672667  
FAX: 44-1895637537  
e-mail: court4lancer@msn.com

**Hungary**

H-2100 Gödöllő  
Isaszegi út 67  
Hungary  
Phone: 36-28-417-179  
FAX: 36-28416-881  
e-mail: bodolai@compuserve.com

**Lancer Authorized Distributors**

**Complete Beverage Services, Ltd.**

**Republic of Ireland and Northern Ireland**  
Gortrush Industrial Estate  
Omagh County Tyrone  
Northern Ireland  
Office: 44-1662 250 008  
FAX: 44-1662-252-991

**Intercom - Spain**

Intercom  
Avda. Concha Espina 8  
28036 Madrid Spain  
Phone: 34-91-564 6900  
FAX: 34-91-564 3065  
e-mail: jmorales@bevserve.com

**Lancer Russia**

**Lancer Sales Company**

Vyatskaya Street 27  
Building 15, 4th Floor  
125015 Moscow, Russia  
Phone: 7-095-745-7108  
FAX: 7-095-745-7109  
Mobile Phone: 7-095-746-0455  
e-mail: lancer@online.ru

**Lancer Middle East / Africa**

Elsayed Moniem - Technical Manager  
Lancer Middle East/Africa  
7 Mubarak Street  
East Ain Shams 11311  
Cairo, Egypt  
Phone/FAX: 2-02-49-35-395  
Mobile Phone (GSM): 2-010-500-4007  
e-mail: elsayed\_lancer@msn.com

**Lancer Authorized Distributor**

**DispenseTech - South Africa**

P.O. Box 17495  
Sunward Park, 1470  
South Africa  
Phone: 27-11-397-7455  
FAX: 27-11-397-7648  
e-mail: david@dispensetech.co.za

**Lancer Latin America**

**Latin America Sales**

6655 Lancer Blvd.  
San Antonio, TX 78219  
Phone: (210) 310-7000  
FAX: (210) 310-7245  
1-800-729-1500  
e-mail: latinamerica@lancercorp.com

**Lancer de México, S.A. de C.V.**

Contact: Francisco Lozano  
Calle Lerdo De Tejada #544 PTE.  
Col. Las Villas  
San Nicolas De Los Garza, N.L.  
Monterrey, N. L., México C.P. 66422  
Phone: (52)-81-83-52-85-32  
Phone: (52)-81-83-52-85-34  
Phone: (52)-81-83-52-53-60  
FAX: (52)-81-83-32-54-10  
e-mail: direccion@lancer.com.mx

**Lancer de México, S.A. de C.V.**

**Branch Office, Mexico City**

Contact: Carlos Lopez  
Lancer de Mexico S.A. de C.V.  
Sucursal Mexico D.F.  
Calle: Centeotl No. 112  
Colonia: La Preciosa  
Delegacion: Azcapotzalco  
Mexico D.F. C.P. 02460  
Phone: (52)-55-53-53-89-28  
Phone: (52)-55-53-53-89-26  
Phone: (52)-55-53-53-88-60  
Phone: (52)-55-53-53-88-21  
FAX: (52)-55-53-52-46-30  
e-mail: lancer@prodigy.net.mx

**Lancer de México, Branch Office, Cd.**

**Juarez**

Contact: Yolanda Puga  
Lancer de Mexico  
Camino de la Lomas # 4380  
Col. Partido Iglesias  
Cd. Juarez, CHIH, C.P. 32617  
México  
Phone and FAX: 521-605-00-86  
Phone: 521-605-00-87  
e-mail: cdjuarez@lancer.com.mx

**(Continued on reverse)**