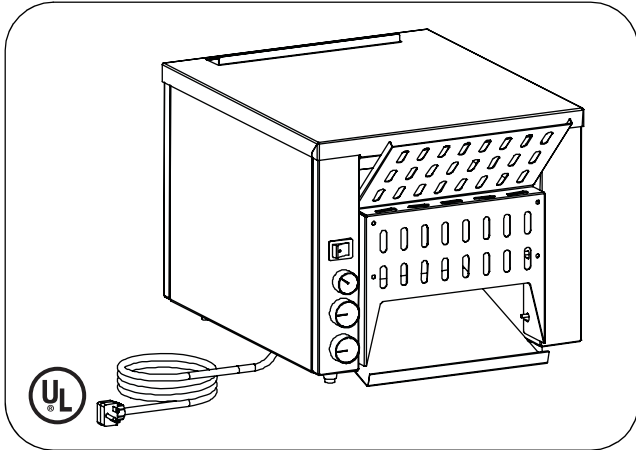


Operating Instructions

Model No. 428-QL Series
Conveyor Toaster



Prince Castle's line of Radiant Conveyor Toasters feature compact designs with easy to use controls. All models feature reliable metal sheathed radiant elements for durability, removable crumb tray, and loading chute.

Electrical

| Model | Volts | Watts | Amps | Hz | Plug |
|---------------------------|-------|-------|------|----|----------|
| Two Slice Models | | | | | |
| 428-EQLGB | 230 | 2970 | 13.0 | 50 | BS-1363A |
| 428-EQLGBC | 230 | 2970 | 13.0 | 50 | BS-1363A |
| Three Slice Models | | | | | |
| 428-3EQLPCE | 240 | 3650 | 15.2 | 50 | CEE-17 |

TABLE OF CONTENTS

| | |
|------------------------------|---|
| Installation | 2 |
| Operation | 2 |
| Preventive Maintenance | 3 |
| Cleaning | 3 |
| Exploded View..... | 4 |
| Parts List | 5 |
| Troubleshooting Guide..... | 6 |
| Wiring Diagram | 6 |

LIMITED WARRANTY

This product is warranted to be free from defects in material and/or workmanship for a period of two (2) years from date of original installation, not to exceed 30 months from date of shipment from our factory (18 months for heater burnout). **On-location service for failure within 1 year of installation, proof of purchase will be required.**

Any component which proves to be faulty in material and/or workmanship will be replaced or repaired (at the option of Prince Castle, Inc.) without cost to the customer for parts and labor.

This warranty is subject to the following exceptions/conditions:

- Use of any non-genuine Prince Castle parts voids this warranty.
- This equipment is portable; charges for on-location service (e.g., trip charges, mileage) are not included in the provisions of this warranty.
- All labor shall be performed during regular work hours. Overtime premium will be charged to the buyer.
- All problems due to operation at voltages other than specified on equipment nameplates do not apply to warranty. Conversion to correct voltage must be the customer's responsibility.
- Damage caused by carelessness, neglect, and/or abuse (e.g., dropping, tampering or altering parts), equipment damaged in shipment, by fire, flood or an act of God is not covered under this warranty.
- Motors that fail due to lack of monthly lubrication will not necessarily be covered under warranty.
- This toaster must be serviced by a Prince Castle Authorized Service Center or a Prince Castle Service Technician. Failure to do so can void this warranty.

PRINCE CASTLE INC. 
WORLDWIDE

355 East Kehoe Blvd. • Carol Stream, IL 60188 USA
Telephone: 630-462-8800 • Fax : 630-462-1460
Toll Free: 1-800-PCASTLE
www.princecastle.com

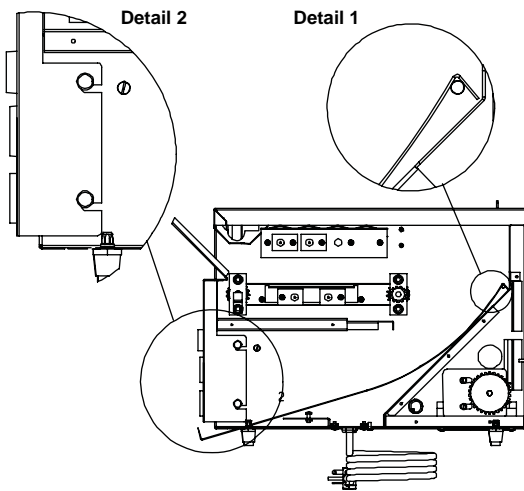
INTENDED USE

This toaster is designed to toast breads, bagels or English muffins. Do not attempt to toast croissants. Their butter content will cause them to stick to the conveyor. Do not attempt to toast products that have been buttered or spread with jam or other coating. Do not attempt to bake in the toaster.

INSTALLATION

1. After you have removed the toaster from the carton, inspect the unit for signs of damage. If there is damage to the unit:
 - Notify carrier within 24 hours after delivery.
 - Save carton and packing materials for inspection purposes.
 - Contact your local dealer or, if purchased directly, the Prince Castle Customer Sales Department at 1-630-462-8800 to arrange for a replacement to be sent.
2. Verify that all parts have been received. Remove the vinyl protective coating from toaster parts.
3. Remove packaging from bun slide and install bun slide in toaster by hooking it into the two pins in the rear of the chamber. (See Detail 1)

figure 1



4. Attach heat shield by hooking its top tabs onto the two mounting pins just under the crumb tray then allow the shield to swing down so it touches the two lower mounting pins. Lift shield slightly to hook onto the lower pins.
 5. The toaster fan located on the bottom of the toaster in the rear draws in cool room air and circulates it through the toaster sides and tops. To insure adequate heat dissipation do not position the toaster where the fan would draw in hot discharge from another appliance.
-

OPERATION

1. Plug unit into the proper voltage receptacle.
2. Set Power switch to "I" for On.

figure 2



3. Turn upper and lower heater controls to maximum.

figure 3



4. Allow 20 minutes for toaster to warm up.
5. Lay bread, bagel, or muffin cut side up on the inlet ramp and push into toaster until it slides on to the conveyor chain. To control toast color, vary the conveyor speed or the heater settings.

PREVENTIVE MAINTENANCE

1. The toaster is cooled using air flowing through the electrical areas. DO NOT operate the toaster without either side cover or the rear cover.
2. The conveyor chain should not touch the top surface of the crumb tray holder. If the chain does touch, retension it by unplugging the unit, remove both side covers, loosen the front bearing mounting screws and pivot the bearing until the chain no longer touches. Re-tighten bearing screws and replace side covers.
3. The toaster has an internal high temperature switch. If internal temperature becomes too hot, the switch will shut off power to the top heaters. The switch will reset automatically once the toaster has cooled.

CLEANING

1. Set the POWER switch to OFF. Allow toaster to cool for 30 minutes.
2. Unplug toaster.
3. Remove crumb tray and clean toaster and parts by wiping with damp cloth.

NOTE: Some units come with a Teflon coated return chute. Do Not use an abrasive cleaning agent or scrub brush on the Teflon.



CAUTION

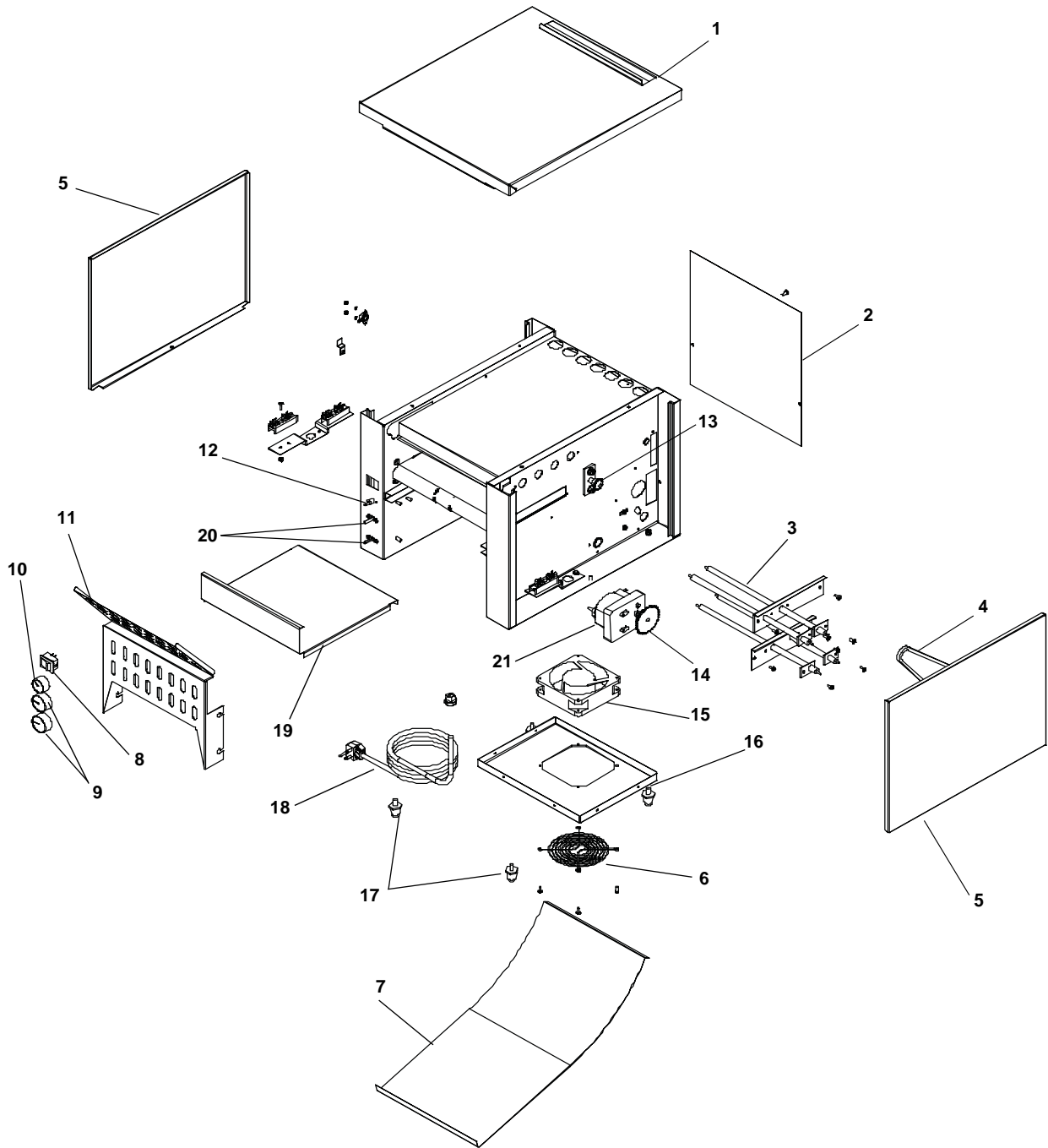
Turn off power switch, unplug toaster from wall outlet, and let toaster cool down before doing any repairs. All repairs should be done by a qualified service technician.



CAUTION

This toaster is not watertight. Do not clean with water jet/jet spray. Do not immerse the toaster in water.

EXPLODED VIEW



PARTS LIST

| Item | Part Number | Description |
|------|-------------|-------------------------------------|
| 1 | 428-122 | Top Cover |
| 2 | 428-108 | Rear Cover |
| 3 | 428-291S | Heater Assy (2-Slice) |
| | 428-257S | Heater Assy (3-Slice) |
| 4 | 428-144S | Chain Assy |
| 5 | 428-126 | Side Cover |
| 6 | 86-271 | Fan Guard |
| 7 | 428-127 | Bun Chute |
| 8 | 78-184S | Power Switch |
| 9 | 70-042 | Heat Control Knobs |
| 10 | 70-043 | Speed Control Knob |
| 11 | 428-112 | Lead-In Ramp |
| 12 | 421-134S | Speed Control Switch (208-240 Volt) |
| 13 | 421-072S | Idler Sprocket |
| 14 | 86-256S | Sprocket |
| 15 | 428-142S | Fan |
| 16 | 428-107 | Bottom Ramp |
| 17 | 86-255S | Legs (Pkg of 4) |
| 18 | 72-305S | Line Cord |
| 19 | 428-223 | Crumb Tray |
| 20 | 78-173S | Heat Control Switch |
| 21 | 87-020S | Motor |
| * | 421-087 | Drive Shaft |
| * | 421-088 | Idler Shaft |
| * | 428-056S | Conveyor Chain |
| * | 421-319S | Teflon Bearing |
| * | 78-222S | High Limit Switch |
| * | 421-071S | Sprocket |
| * | 65-048-10S | Relay |
| * | 85-115S | Transformer |
| * | 428-143S | Link, Spring Clip |
| | 421-208S | PCB Cap and Filter Assy |

* Part Not Shown.

TROUBLESHOOTING GUIDE

| PROBLEM | CAUSE | SOLUTION |
|---|---|---|
| No power. | Circuit breaker tripped. Power switch inoperable. Broken wire in power cord. | Reset circuit breaker. Replace power switch. Replace power cord. |
| Toaster conveyor not turning. | Conveyor motor inoperable. Conveyor switch inoperable. Motor chain is loose. Conveyor bearings worn. | Lubricate and/or replace motor. Replace speed switch. Retension motor chain. Replace bearings. |
| Conveyor chain binds up in operation. | Sprockets worn. Excessive slack in conveyor chain. | Replace sprockets. Remove a chain link. |
| Toaster overheating. | Airflow blockage. Airflow fan inoperable. | Clean any debris from fan guard. Replace fan motor. |
| Upper and lower heat tubes not heating. | Heater switch inoperable. Heater tube inoperable. | Replace heater switch. Replace heater tube. |
| Bread product burning. | Conveyor speed too low. | Adjust to proper settings. |
| Bread product too light. | Conveyor speed too fast. | Adjust to proper settings. |

⚠ CAUTION

Turn off power switch, unplug toaster from wall outlet, and let toaster cool down before doing any repairs. All repairs should be done by a qualified service technician.

WIRING DIAGRAM (428-EQLGB)

