



Installation

Operation

Maintenance

36S - SH Salamander

TABLE OF CONTENTS

INSTALLATION	1
RECEIVING THE APPLIANCE	1
ELECTRICAL CONNECTION	1
VENTILATION AND CLEARANCES	1
PLACEMENT ON RANGE	2
<i>NON - PREDRILLED RANGES</i>	2
<i>PREDRILLED RANGES</i>	2
OPERATION	3
INITIAL PREHEAT	3
PARTS LIST	3
WIRING DIAGRAMS	4
208/240 VOLT	4
480 VOLT	5
WARRANTY	6

INSTALLATION

RECEIVING THE APPLIANCE

Upon receipt of the appliance, check for freight damage both visible and concealed. Visible damage should be noted on the freight bill at the time of delivery and signed by the carrier's agent. Concealed loss or damage means loss or damage which does not become apparent until the merchandise has been unpacked. If concealed loss or damage is discovered, make a written request for inspection by the carrier's agent within 15 days of delivery. All packing material should be kept for inspection. **Do not return damaged merchandise to Lang Manufacturing Company.** File your claim with the carrier.

Uncrate the appliance as near its intended location as practical. The crating will help protect the unit from the physical damage normally associated with moving it through hallways and doorways.

ELECTRICAL CONNECTION

The electrical connection must be made in accordance with local codes or in the absence of local codes with NFPA No. 70 latest edition (in Canada use: CAS STD. C22.1).

Supply wire size must be large enough to carry the amperage load for the number of appliances being installed. Wire size information can be found on the data plate and on the chart below.

ELECTRICAL DATA															
MODEL NUMBER	THREE PHASE LOADING			TOTAL K.W.	NONFALAMPS PER LINE										
	K.W. PER PHASE				THREE PHASE									SINGLE PHASE	
	L1 - L2	L2 - L3	L3 - L1		208 VOLT			240 VOLT			480 VOLT			208 V.	240 V.
					L1	L2	L3	L1	L2	L3	L1	L2	L3	L1	L2
36S-SH	6.0	6.0	0.0	6.0	28.8	28.8	0.0	25.0	25.0	0.0	12.5	12.5	0.0	28.8	25.0

VENTILATION AND CLEARANCES

Standard minimum clearance from **combustible** construction is as follows:

- 3 inches from sides
- 3 inches from back

Keep the appliance area free and clear of combustible material and do not obstruct the flow of combustion or ventilation air.

The installation of any components such as a vent hood, grease extractors, and/or fire extinguisher systems, must conform to the their applicable nationally recognized installation standards.

PLACEMENT ON RANGE

NON - PREDRILLED RANGES

If the range that the Salamander is to be installed on has been predrilled by the factory, proceed to the next section - Predrilled Ranges. If the range has not been predrilled, continue with this section.

Place the Salamander on top of the range so that the back of the range is flush with the back of the Salamander.

Mark the five holes in through the flange in the Salamander onto the top of the range.

Mark the three holes through the side of the Salamander onto the side of the range.

Remove the Salamander from the range.

Drill all eleven holes using a # 27 drill bit.

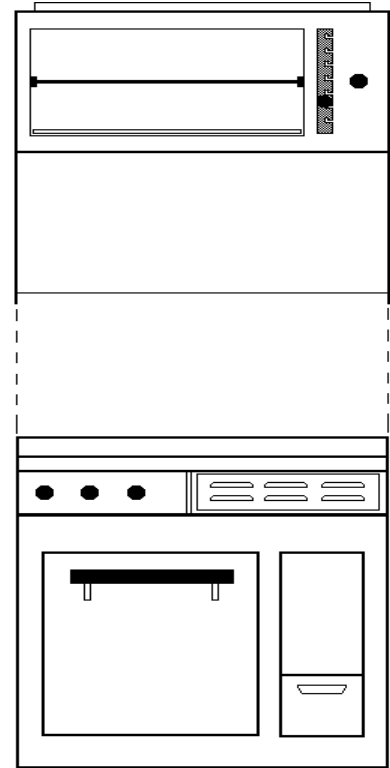
Tap the five holes in the top of the range with a 10-24 tap.

PREDRILLED RANGES

Place the Salamander on top of the range so that the holes in the salamander line up with the holes in the range and the backs are flush.

Install five 10-24 x 1/2 Truss Head Machine Screws through the holes in the back flange of the Salamander into the top of the range.

Install three 10 x 1/2 Sheet Metal Screws through each side of the Salamander into the side of the range.



OPERATION

INITIAL PREHEAT

Rotate the temperature dial until **Hi** is at the top.

Raise the broiler rack to the top most position and allow the rack to heat.

Lower the rack and place the product on it.

Raise the rack to the desired cooking position.

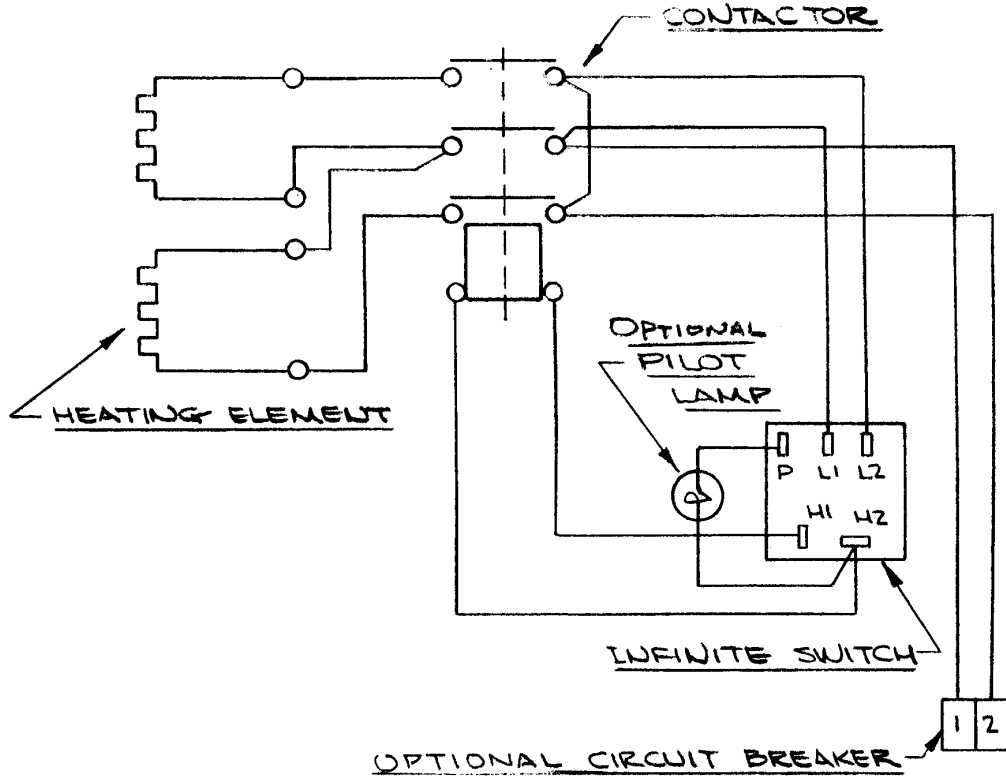
Set the temperature dial to the desired position.

PARTS LIST

Description	Part No.
Contactator, 3 Pole	30700-03
Control, Infinite	30305-01
Element 208 Volt	11100-01
Element 240 Volt	11100-02
Element 480 Volt	11100-05
Frame, Element	50305-04
Knob, Infinite Control	70701-04
Pan, Draw	50305-05
Pan, Drip	50305-06
Transformer, 480 Volt units only	31400-04

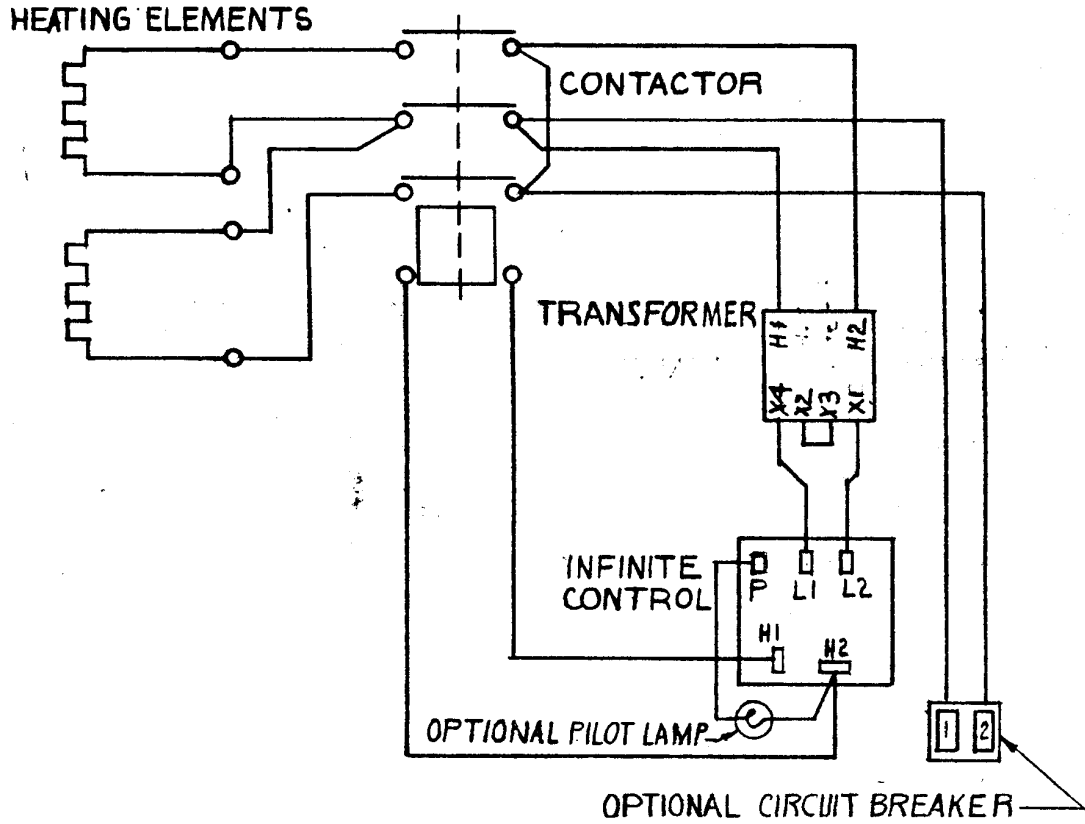
WIRING DIAGRAMS

208/240 VOLT



<u>SERVICE CONNECTION</u>		
SINGLE PHASE	L1 =	1
	L2 =	2
THREE PHASE	L1 =	1
	L2 =	-
	L3 =	2
KW PER PHASE	$\phi A =$	6
	$\phi B =$	0
	$\phi C =$	0

480 VOLT



SERVICE CONNECTION		
SINGLE PHASE	L1	1
	L2	2
THREE PHASE	L1	1
	L2	2
	L3	—
K.W. PER PHASE	Ø A	6
	Ø B	0
	Ø C	0

WARRANTY

Lang Manufacturing Limited Warranty to Commercial Purchasers* (Domestic U.S., Hawaii, & Canadian Sales only.)

Lang Manufacturing Equipment (“Lang Equipment”) has been skillfully manufactured, carefully inspected and packaged to meet rigid standards of excellence. Lang warrants its Equipment to be free from defects in material and workmanship for (12) twelve consecutive months, with the following conditions and subject to the following limitations.

I. This parts and labor warranty is limited to Lang Equipment sold to the original commercial purchaser/users (but not original equipment manufacturers), at its original place of installation, in the continental United States, Hawaii and Canada.

Quartz elements are warranted for ninety(90) days from the date of installation.

II. Damage during shipment is to be reported to the carrier, is not covered under this warranty, and is the sole responsibility of purchaser/user.

III. Lang, or an authorized service representative, will repair or replace, at Lang’s sole election, and Lang Equipment, including but not limited to, safety valves, gas and electric components, found to be defective during the warranty period. As to warranty service in the territory described above, Lang will absorb labor and portal to portal transportation costs (time & mileage) for the first (12) twelve months from the date of installation or eighteen (18) months from date of shipment from Lang Manufacturing, which ever comes first.

IV. This warranty does not cover routine general maintenance, periodic adjustments, as specified in operating instructions or manuals, and consumable parts such as quartz elements, or labor costs incurred for removal of adjacent equipment or objects to gain access to Lang Equipment. This warranty does not cover defects caused by improper installation, abuse, careless operation, or improper maintenance of equipment.

V. THIS WARRANTY IS EXCLUSIVE AND IS IN LIEU OF ALL OTHER WARRANTIES, EXPRESSED OR IMPLIED, INCLUDING ANY IMPLIED WARRANTY OF MERCHANTABILITY OR FITNESS FOR A PARTICULAR PURPOSE, EACH OF WHICH IS HEREBY EXPRESSLY DISCLAIMED. THE REMEDIES DESCRIBED ABOVE ARE EXCLUSIVE AND IN NO EVENT SHALL LANG BE LIABLE FOR SPECIAL, CONSEQUENTIAL OR INCIDENTAL DAMAGES FOR THE BREACH OR DELAY IN PERFORMANCE OF THIS WARRANTY.

VI. Lang Equipment is for commercial use only. If sold as a component of another(OEM) manufacturer’s equipment, or if used as a consumer product, such Equipment is sold AS IS and without any warranty.